



REASONS TO SEAL CONCRETE PAVERS & NATURAL STONE HARDSCAPES

PROTECTION OF INVESTMENT

It is easy to spend a lot of money on outdoor home upgrades, such as pool decks, driveways, outdoor kitchens, etc. Installing a sealer to these expensive surfaces is a way of protecting your investment while maintaining their natural beauty.

COLOR RETENTION

Part of what makes concrete pavers and natural stone surfaces so appealing and attractive is the natural colors of these particular substrates. Sealing will help maintain those natural colors and can even enhance the colors if desired.

RESISTANCE FROM THE ELEMENTS

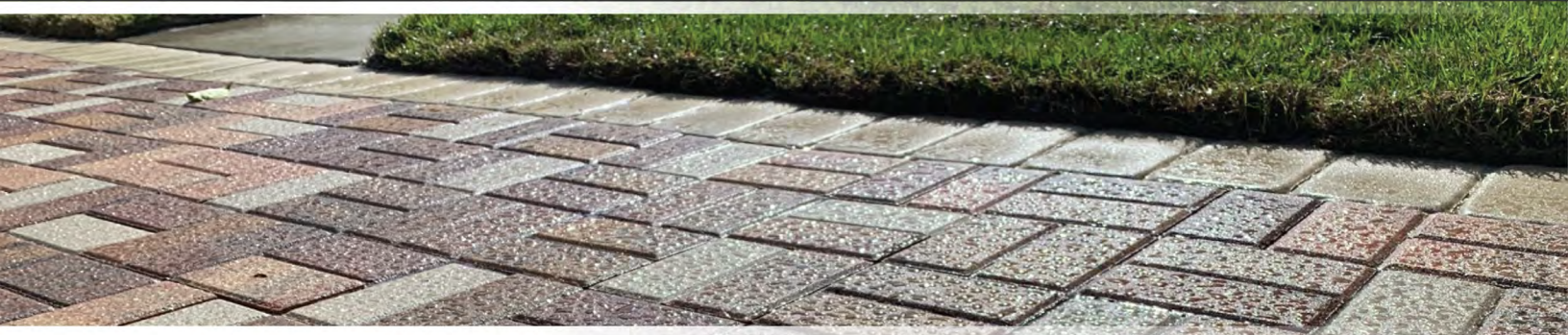
Mother Nature is the most destructive force when it comes to concrete pavers and hardscapes. Sealing will protect from damage over time caused by weather exposure. Sealing will also protect from damage caused by salt in salt generator pools and salted icy surfaces.

INHIBIT MOLD & ALGAE GROWTH

Sealing is the best way to prevent mold and algae growth. Most sealers will create a hydrophobic barrier to disallow for moisture to be absorbed by the surface. Some sealers are even breathable, which allows moisture to escape and not stay trapped underneath. These characteristics will greatly reduce risk of mold and algae growth.

EASIER CLEANING & MAINTENANCE

Routine cleaning and maintenance is much easier when a sealer is regularly used. Unsightly stains from dirt, biomatter, and any other sources can typically be treated without expensive and difficult to use equipment if the sealer is properly maintained.



INTERLOCKING CONCRETE PAVERS



SEALER



URE-SEAL H₂O*
AVAILABLE IN GLOSS (150), MID-GLOSS (151)
& NATURAL (152) FINISHES

WET!
PAVER SEALER

Coverage Rate	200-300 sq. ft. per gal.	Coverage Rate	250-350 sq. ft. per gal.
Est. Coverage per 5 gal.	800-1200 sq. ft.	Est. Coverage per 5 gal.	700-900 sq. ft.
Avg. Cost per sq. ft.	\$0.25-\$0.35	Avg. Cost per sq. ft.	\$0.25-\$0.35
Packaging	1 Gal./2.5 Gal./5 Gal.	Packaging	1 Gallon & 5 Gallons
Item Code	150-KIT/150-KIT2.5/150-KIT5	Item Code	157-1G (1 Gal.) 157-5G (5 Gal.)

*ABOVE IS BASED ON DILUTION RATIO OF 1 TO 1 AND 2 COATS. REFER TO TDS FOR FURTHER DILUTION APPLICATION ON OUR WEBSITE:
WWW.INNOVATIVECONCRETE.COM/PRODUCTS



SURFACE PREP



TOTAL PREP
NEW & EXISTING
EFFLORESCENCE & RUST STAIN REMOVER

TOTAL KLEAN
EXISTING
DEGREASER

Dilution Rate	4:1	Dilution Rate	5:1
Coverage Rate	150-200 sq. ft. per ready-to-use gal.	Coverage Rate	150-200 sq. ft. per ready-to-use gal.
Item Code	720-1G (1 Gallon)	Item Code	700-1G (1 Gallon)

ALWAYS APPLY A TEST AREA FOR BEST RESULTS. ABOVE ESTIMATED COVERAGE RATES BASED ON RECOMMENDED DILUTION RATIOS.
PLEASE CALL ICT DIRECTLY AT (888) 296-5236 FOR ANY ADDITIONAL QUESTIONS.



INNOVATIVE CONCRETE TECHNOLOGY™



NATURAL STONES

TRAVERTINE | FLAGSTONE | BLUESTONE
SANDSTONE | SLATE | & OTHER NATURAL SURFACES



SEALER



STONE SHOW H₂O ENHANCER ALSO AVAILABLE IN NANO ENHANCER (172) EVERYWHERE EXCEPT CA

STONE SHOW H₂O INVISIBLE

Coverage Rate	60-350 sq. ft. per gal.	Coverage Rate	60-350 sq. ft. per gal.
Packaging	1 Gallon & 2.5 Gallons	Packaging	1 Gallon & 2.5 Gallons
Item Code	170-1G (1 Gal.) 170-2.5G (2.5 Gal.)	Item Code	171-1G (1 Gal.) 171-2.5G (2.5 Gal.)

COVERAGE RATES WILL VARY DEPENDING ON POROSITY OF SUBSTRATE.



SURFACE PREP



TOTAL ETCH & CLEAN
SURFACE ETCHER & MILD DEGREASER

TOTAL PREP
EFFLORESCENCE & RUST STAIN REMOVER

Dilution Rate	2:1	Dilution Rate	4:1
Coverage Rate	150-200 sq. ft. per ready-to-use gal.	Coverage Rate	150-200 sq. ft. per ready-to-use gal.
Item Code	740-1G (1 Gallon)	Item Code	720-1G (1 Gallon)

REFER TO TDS FOR SPECS AND ADDITIONAL PRODUCT INFO ON OUR WEBSITE: WWW.INNOVATIVECONCRETE.COM/PRODUCTS
ALWAYS APPLY A TEST AREA FOR BEST RESULTS. PLEASE CALL ICT DIRECTLY AT (888) 296-5236 FOR ANY ADDITIONAL QUESTIONS.



CLAY & CONCRETE SURFACES

CLAY PAVERS | RECLAIMED PAVERS | SALTED CONCRETE
SEEDED CONCRETE | BROOM FINISH CONCRETE | BARREL ROOF TILES



SEALER



WATER SHIELD H₂O 160 (w/ STAIN GUARD) & 161

STONE SHOW H₂O ENHANCER & INVISIBLE

Coverage Rate	60-250 sq. ft. per gal.	Coverage Rate	60-350 sq. ft. per gal.
Packaging	1 Gallon & 5 Gallons	Packaging	1 Gallon & 2.5 Gallons
Item Codes	Stain Guard: 160-1G (1 Gal.) 160-5G (5 Gal.) Standard: 161-1G (1 Gal.) 161-5G (5 Gal.)	Item Codes	Enhancer: 170-1G (1 Gal.) 170-2.5G (2.5 Gal.) Invisible: 171-1G (1 Gal.) 171-2.5G (2.5 Gal.)

COVERAGE RATES WILL VARY DEPENDING ON POROSITY OF SUBSTRATE

ALSO AVAILABLE IN NANO ENHANCER (172) EVERYWHERE EXCEPT CA



SURFACE PREP



TOTAL PREP
NEW & EXISTING
EFFLORESCENCE & RUST STAIN REMOVER

TOTAL KLEAN
EXISTING
DEGREASER

Dilution Rate	4:1	Dilution Rate	5:1
Coverage Rate	150-200 sq. ft. per ready-to-use gal.	Coverage Rate	150-200 sq. ft. per ready-to-use gal.
Item Code	720-1G (1 Gallon)	Item Code	700-1G (1 Gallon)

REFER TO TDS FOR SPECS AND ADDITIONAL PRODUCT INFO ON OUR WEBSITE: WWW.INNOVATIVECONCRETE.COM/PRODUCTS
ALWAYS APPLY A TEST AREA FOR BEST RESULTS. PLEASE CALL ICT DIRECTLY AT (888) 296-5236 FOR ANY ADDITIONAL QUESTIONS.