



 **SAMURAI**

CORE RANGE 2.0

PUSH FORWARD



ABOUT US

Courage, dedication, integrity and purity: the core values that define us.

For 25 years we have crafted unique designs, developing premium products and fabrics that made us a leading global teamwear brand.

Today, we live on the intersection between sport and lifestyle, creating contemporary high-performance apparel and athleisure.

We celebrate individuals, teams and communities who share our values. No matter who you are, your physical form, the size of your arena or the colours you wear.

ELITE PERFORMANCE

COLLECTION

0100 +





ELITE PERFORMANCE

EP: 0102 - REVOLUTION TRACK TOP 2.0

Fitted in style, built for training and made in our durable woven fabric with a soft feel mesh lining and full zip. Ideal for pitch-side and leisure. A new take on our Revolution Track Top.

FABRIC	MICROLIGHT RIPSTOP
FIT	UNISEX - FASHION FIT
SIZES	YOUTH: XS - S - M - L SENIOR: XXS - XS - S - M - L - XL - 2XL - 3XL - 4XL - 5XL
COLOURS	ONYX BLACK & OXFORD NAVY



ONYX BLACK



OXFORD NAVY





ELITE PERFORMANCE

EP: 0101 - WINDBREAKER

Made from our durable Smooth Polyester fabric, this Wind Breaker is hard-wearing and water resistant, protecting you from the elements. An updated look at our Narita Smock Top.

- FABRIC: SMOOTH POLYESTER
- FIT: UNISEX - FASHION FIT
- SIZES: YOUTH: XS - S - M - L SENIOR: XXS - XS - S - M - L - XL - 2XL - 3XL - 4XL - 5XL
- COLOURS: ONYX BLACK & OXFORD NAVY



ONYX BLACK



OXFORD NAVY

ELITE PERFORMANCE

EP: 0107 - SHIELD TRAINING TOP

Made from our Bonded soft shell, this is a hard-wearing and water resistant, protecting you from the elements.

- FABRIC: BONDED SOFT SHELL
- FIT: UNISEX - FASHION FIT
- SIZES: YOUTH: XS - S - M - L SENIOR: XXS - XS - S - M - L - XL - 2XL - 3XL - 4XL - 5XL
- COLOURS: ONYX BLACK & OXFORD NAVY



ONYX BLACK



OXFORD NAVY

ELITE PERFORMANCE

EP: 0112 - LIGHTWEIGHT JACKET

Built with our exclusive PU Laminated Woven Polyester shower proof fabric, our Shell Jacket offers both function and comfort whilst protecting you from the elements. Mesh lined with zipped pockets and a reflective tape feature.

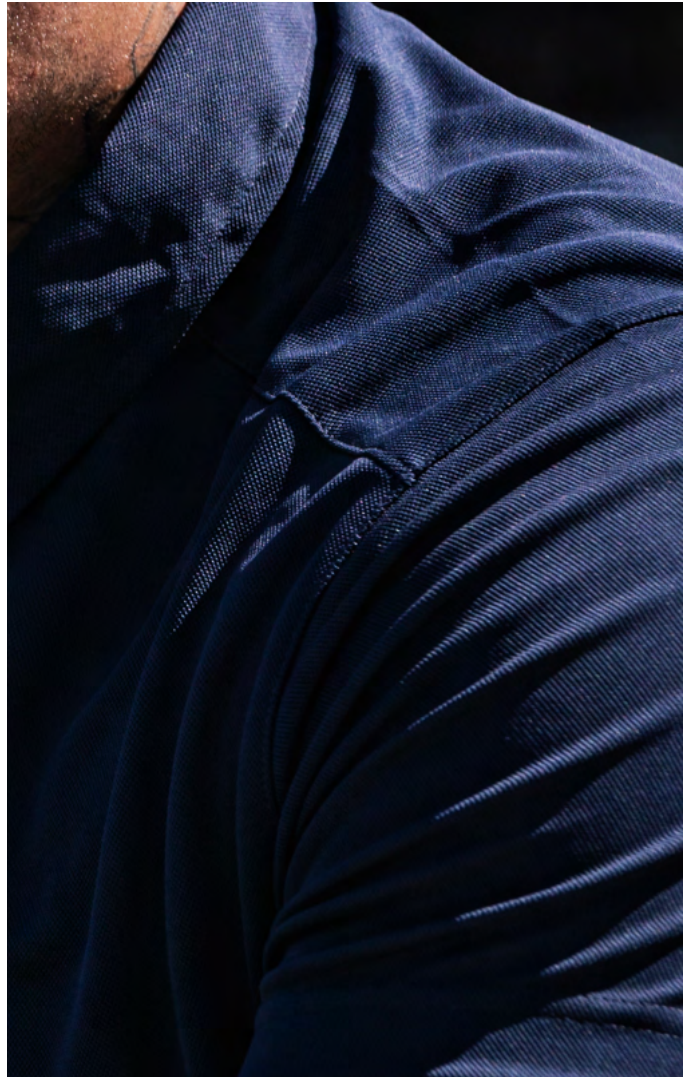
- FABRIC: WOVEN POLYESTER
- FIT: UNISEX - FASHION FIT
- SIZES: YOUTH: XS - S - M - L SENIOR: XXS - XS - S - M - L - XL - 2XL - 3XL - 4XL - 5XL
- COLOURS: ONYX BLACK & OXFORD NAVY



ONYX BLACK



OXFORD NAVY



ELITE PERFORMANCE

EP: 0111 PERFORMANCE POLO 2.0

Built with a moisture management system, this Polo wicks sweat away from the skin keeping you cool and dry. Lightweight and anti-bacterial resistant and designed in a slim fit block. An enhanced version of our Performance Polo.

- FABRIC: DIAMOND POLYESTER
- FIT: UNISEX - FASHION FIT
- SIZES: YOUTH: XS - S - M - L SENIOR: XXS - XS - S - M - L - XL - 2XL - 3XL - 4XL - 5XL
- COLOURS: ONYX BLACK & OXFORD NAVY



ONYX BLACK



OXFORD NAVY



EP: 0105 - CLASSIC VEST

ONYX BLACK, PURE WHITE, BLAZE RED & OXFORD NAVY





ELITE PERFORMANCE

EP: 0105 - CLASSIC VEST

Breathable and lightweight in design, our Tech Vest is built with functionality in mind. Featuring our iconic Performex™ moisture management system. A new take on our Classic Vest.

- FABRIC DIAMOND POLYESTER
- FIT UNISEX - FASHION FIT
- SIZES YOUTH: XS - S - M - L SENIOR: XXS - XS - S - M - L - XL - 2XL - 3XL - 4XL - 5XL
- COLOURS ONYX BLACK , PURE WHITE , BLAZE RED & OXFORD NAVY



ONYX BLACK



PURE WHITE



BLAZE RED



OXFORD NAVY





ELITE PERFORMANCE

EP: 0110 PERFORMANCE TEE 2.0

With maximum wicking functionality and designed to be breathable, our EP Tee is built for optimum movement. Keeping you at your peak performance level. A modernised Performance Tee.

- FABRIC: SMOOTH INTERLOCK
- FIT: UNISEX - FASHION FIT
- SIZES: YOUTH: XS - S - M - L SENIOR: XXS - XS - S - M - L - XL - 2XL - 3XL - 4XL - 5XL
- COLOURS: ONYX BLACK, PURE WHITE & OXFORD NAVY



ONYX BLACK



PURE WHITE



OXFORD NAVY

ELITE PERFORMANCE

EP: 0110 - COTTON TOUCH TEE

With maximum wicking functionality and designed to be breathable, our EP Tee is built for optimum movement. Keeping you at your peak performance level.

- FABRIC:** COTTON TOUCH KNIT JERSEY
- FIT:** UNISEX - FASHION FIT
- SIZES:** YOUTH: XS - S - M - L SENIOR: XXS - XS - S - M - L - XL - 2XL - 3XL - 4XL - 5XL
- COLOURS:** ONYX BLACK, PURE WHITE, GREY MELANGE & OXFORD NAVY



PURE WHITE



ONYX BLACK



GREY MELANGE



OXFORD NAVY

ELITE PERFORMANCE

EP: 0109 - RUGBY TRAINING JERSEY

A durable and robust rugby shirt built in our Ikoma textured-knit fabric with Ikoma Smooth panelling to enable full wicking capabilities.

- FABRIC:** COTTON TOUCH KNIT JERSEY
- FIT:** UNISEX - FASHION FIT
- SIZES:** YOUTH: XS - S - M - L SENIOR: XXS - XS - S - M - L - XL - 2XL - 3XL - 4XL - 5XL
- COLOURS:** ONYX BLACK, PURE WHITE & OXFORD NAVY



ONYX BLACK



OXFORD NAVY



PURE WHITE



ELITE PERFORMANCE

EP: 0119 - PREMIER SHORT 2.0

Developed to bring the best rugby shorts on the market and built from our high tensile strength Polyester Drill fabric for guaranteed durability. Featuring an added stretch side and gusset panels for maximum movement.

- FABRIC:** POLYESTER DRILL WITH KUSARO PRO PANELS
- FIT:** UNISEX
- SIZES:** YOUTH: XS - S - M - L SENIOR: XXS - XS - S - M - L - XL - 2XL - 3XL - 4XL - 5XL
- COLOURS:** ONYX BLACK, PURE WHITE & OXFORD NAVY



ONYX BLACK



PURE WHITE



OXFORD NAVY



ELITE PERFORMANCE

EP: 0100 - CLIPPER 2.0

Built with our high tensile stretch Woven Polyester fabric with Waffle-Knit panels and inserts for ease and freedom of movement. 5" Inside leg as standard with slider pockets.

FABRIC	WOVEN POLYESTER WITH WAFFLE-KNIT PANELS
FIT	UNISEX
SIZES	YOUTH: XS - S - M - L SENIOR: XXS - XS - S - M - L - XL - 2XL - 3XL - 4XL - 5XL
COLOURS	ONYX BLACK , PURE WHITE & OXFORD NAVY



ONYX BLACK



PURE WHITE



OXFORD NAVY



ELITE PERFORMANCE

EP: 0113 - SKORT

Anti-bacterial and with full wicking functionality, our Skorts are built to keep you feeling supported and comfortable.

- FABRIC: DIAMOND POLYESTER
- FIT: WOMEN
- SIZES: YOUTH: XS - S - M - L SENIOR: XXS - XS - S - M - L - XL - 2XL - 3XL - 4XL - 5XL
- COLOURS: ONYX BLACK & OXFORD NAVY



ONYX BLACK



OXFORD NAVY

ELITE PERFORMANCE

EP: 0117 - LEGGINGS

Built for elite performance, these high power stretch leggings offer a full contoured fit and security. Featuring side pockets and contoured flat seaming.

- FABRIC: POLYESTER ELASTANE
- FIT: WOMEN
- SIZES: SENIOR: XXS - XS - S - M - L - XL - 2XL - 3XL - 4XL - 5XL
- COLOURS: ONYX BLACK & OXFORD NAVY



ONYX BLACK



OXFORD NAVY





ELITE PERFORMANCE

EP: 0103 - REVOLUTION TRACK PANT 2.0

Offering the best in outdoor training comfort and featuring a 14" side zip and side pockets. An updated remodel of our Revolution Track Pant.

- FABRIC: MICROLIGHT RIPSTOP
- FIT: UNISEX
- SIZES: YOUTH: XS - S - M - L SENIOR: XXS - XS - S - M - L - XL - 2XL - 3XL - 4XL - 5XL
- COLOURS: ONYX BLACK & OXFORD NAVY



ONYX BLACK



PURE WHITE



ELITE PERFORMANCE

EP: 0104 - SOUTHLAND TRACK PANT 2.0

Fully lined with cotton jersey, built for added comfort. Our Tech Pant features full-length side zips to mid thigh, for quick access and easier removal, and side pockets.

FABRIC	TASLON POLYESTER
FIT	UNISEX
SIZES	SENIOR: XXS - XS - S - M - L - XL - 2XL - 3XL - 4XL - 5XL
COLOURS	ONYX BLACK & OXFORD NAVY



ONYX BLACK



OXFORD NAVY

UTILITY COLLECTION

0200 +





UTILITY

U: 0202 - CLASSIC HOODIE 2.0

Timeless in design, built for a relaxed look. Featuring our cotton-rich fleece with a kangaroo pouch pocket and ribbed cuffs. An enhanced version of our Classic Hoodie.

- FABRIC BRUSHED FLEECE
- FIT UNISEX
- SIZES YOUTH: XS - S - M - L SENIOR: XXS - XS - S - M - L - XL - 2XL - 3XL - 4XL - 5XL
- COLOURS ONYX BLACK & OXFORD NAVY



OXFORD NAVY



ONYX BLACK





U: 0202 - CLASSIC HOODIE 2.0

ONYX BLACK & OXFORD NAVY





UTILITY

U: 0201 - TECH ZIP HOODIE

Built in our Matt Poly Fleece fabric, our Tech Zip Hoodie offers optimum comfort. Minimal in design, giving this full zip hoodie an effortless and professional look. With concealed side zip pockets.

FABRIC: MATT POLY FLEECE

FIT: UNISEX

SIZES: YOUTH: XS - S - M - L SENIOR: XXS - XS - S - M - L - XL - 2XL - 3XL - 4XL - 5XL

COLOURS: ONYX BLACK , GREY MELANGE & OXFORD NAVY



ONYX BLACK



GREY MELANGE



OXFORD NAVY



U: 0209 - QUARTER ZIP PULLOVER

ONYX BLACK & OXFORD NAVY





UTILITY

U: 0209 - QUARTER ZIP PULLOVER

The ideal mid-layer, remastered from our popular Quarter Zip Pullover. Our Quarter Zip Top is built using Performex fabric properties designed to be breathable.

- FABRIC MATT POLY FLEECE
- FIT UNISEX
- SIZES YOUTH: XS - S - M - L SENIOR: XXS - XS - S - M - L - XL - 2XL - 3XL - 4XL - 5XL
- COLOURS ONYX BLACK & OXFORD NAVY



ONYX BLACK



OXFORD NAVY



UTILITY

U: 0204 - GILET

Built for warmth and protection, without compromising on movement. Featuring a chevron stitching detail in a lightweight shower proof nylon with cruelty-free synthetic down-effect wadding.

FABRIC: NYLON / SYNTHETIC WADDING

FIT: UNISEX

SIZES: YOUTH: XS - S - M - L SENIOR: XXS - XS - S - M - L - XL - 2XL - 3XL - 4XL - 5XL

COLOURS: ONYX BLACK & OXFORD NAVY



OXFORD BLACK



OXFORD NAVY

UTILITY

U: 0207 - MICROLITE PUFFER

Using only sustainably sourced synthetic down, our Puffer features lightweight padding that is cruelty-free and vegan-friendly. Built to protect from the elements.

FABRIC: NYLON / SYNTHETIC WADDING

FIT: UNISEX

SIZES: YOUTH: XS - S - M - L SENIOR: XXS - XS - S - M - L - XL - 2XL - 3XL - 4XL - 5XL

COLOURS: ONYX BLACK & OXFORD NAVY



ONYX BLACK



OXFORD NAVY

UTILITY

U: 0206 - LONGLINE PUFFER

Built with Nylon shower proof outer deep wadding and featuring chevron stitching detail for superior warmth and insulation. This calf length puffer also offers storm cuffs and hood.

FABRIC: NYLON / SYNTHETIC WADDING

FIT: UNISEX - FASHION FIT

SIZES: YOUTH: XS - S - M - L SENIOR: XXS - XS - S - M - L - XL - 2XL - 3XL - 4XL - 5XL

COLOURS: ONYX BLACK & OXFORD NAVY



ONYX BLACK



OXFORD NAVY

UTILITY

U: 0219 - NAVIGATOR JACKET

A full coverage jacket to keep you cosy, warm and dry. Manufactured in our water repellent Smooth Nylon fabric with 6oz wadding and featuring a full hood and a drop tail hem.

FABRIC: NYLON

FIT: UNISEX

SIZES: YOUTH: XS - S - M - L SENIOR: XXS - XS - S - M - L - XL - 2XL - 3XL - 4XL - 5XL

COLOURS: ONYX BLACK & OXFORD NAVY



ONYX BLACK



OXFORD NAVY



UTILITY

U: 0220 - PITCHSIDE PARKA

Designed as the ultimate side-line coat with a deep pile fleece lining to ensure players are warm and match ready. Featuring deep side pockets, vented back hem and a chunky, quick release zip.

FABRIC: SMOOTH INTERLOCK

FIT: UNISEX

SIZES: S = (YOUTH: S - M - L) M = (SENIOR: XS - S - M) L = (SENIOR: L - XL - 2XL)

COLOURS: ONYX BLACK, BLAZE RED & OXFORD NAVY



ONYX BLACK



BLAZE RED



OXFORD NAVY

UTILITY

U: 0205 - PIQUE POLO

Slim fitting and featuring a ribbed collar and cuff detail. An updated take on our Lifestyle Polo.

FABRIC: PIQUE KNIT COTTON

FIT: UNISEX - FASHION FIT

SIZES: YOUTH: XS - S - M - L SENIOR: XXS - XS - S - M - L - XL - 2XL - 3XL - 4XL - 5XL

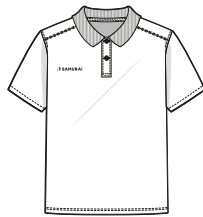
COLOURS: ONYX BLACK, OXFORD NAVY & PURE WHITE



ONYX BLACK



OXFORD NAVY



PURE WHITE

UTILITY

U: 0208 - POLO

A traditional polo design with a fitted waist for a more feminine fit. Featuring a ribbed collar and cuff detail. A modernised Lifestyle Polo.

FABRIC: PIQUE KNIT COTTON

FIT: WOMEN

SIZES: YOUTH: XS - S - M - L SENIOR: XXS - XS - S - M - L - XL - 2XL - 3XL - 4XL - 5XL

COLOURS: ONYX BLACK, PURE WHITE & OXFORD NAVY



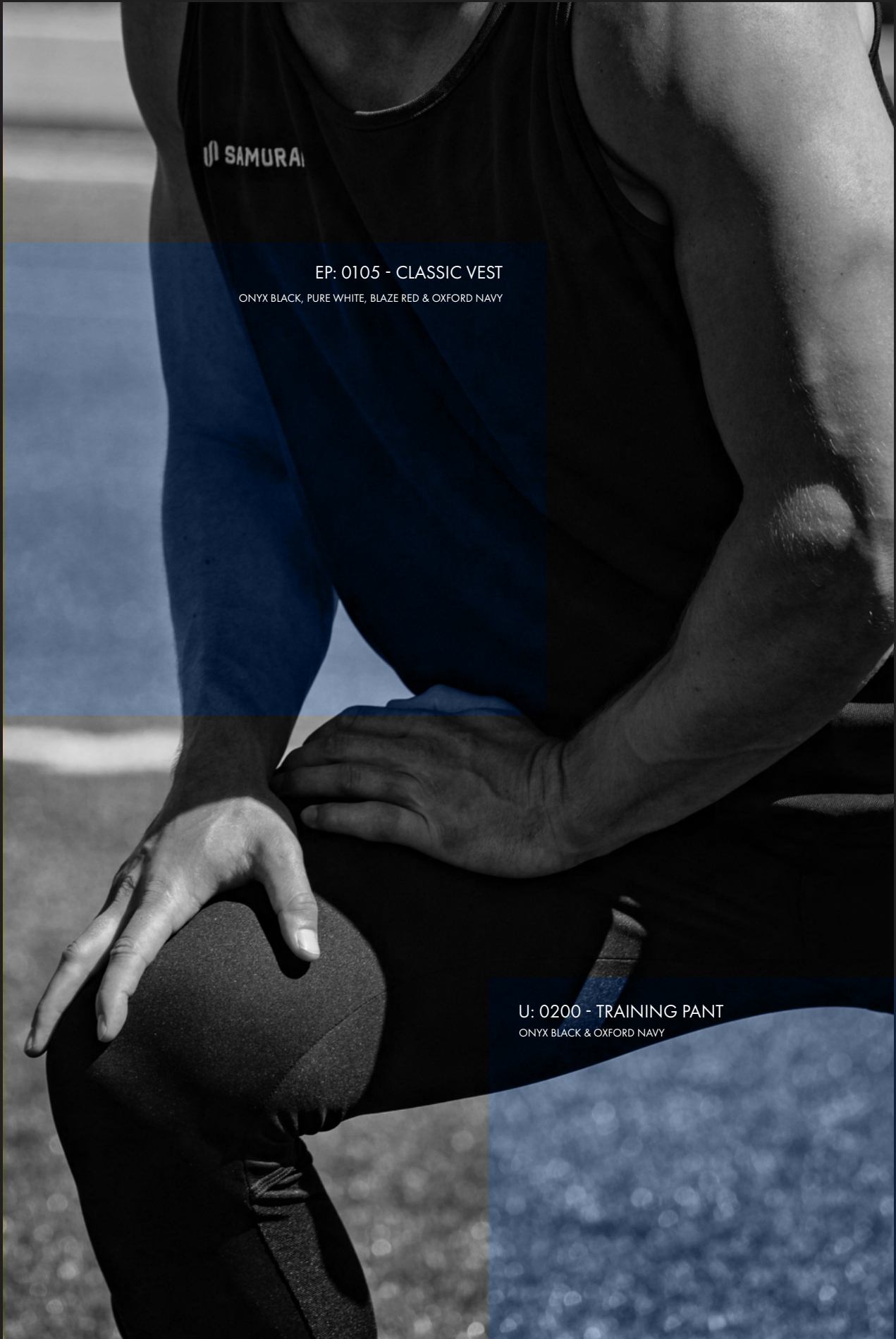
ONYX BLACK



OXFORD NAVY



PURE WHITE



SAMURAI

EP: 0105 - CLASSIC VEST

ONYX BLACK, PURE WHITE, BLAZE RED & OXFORD NAVY

U: 0200 - TRAINING PANT

ONYX BLACK & OXFORD NAVY



UTILITY

U: 0200 - TRAINING PANT 2.0

Built with a modern tapered fit, designed for everyday leisure or training. Perfectly fitted for comfort and a full range of movement with a soft ribbed back calf panel and side pockets. An updated take on our Tapered Training Pant.

FABRIC: LIGHTWEIGHT MATT POLY FLEECE

FIT: UNISEX

SIZES: YOUTH: XS - S - M - L SENIOR: XXS - XS - S - M - L - XL - 2XL - 3XL - 4XL - 5XL

COLOURS: ONYX BLACK & OXFORD NAVY



ONYX BLACK



OXFORD NAVY

ELITE PERFORMANCE

EP: 0203 - WOMEN'S TRAINING PANT 2.0

Built for women, this training pant has a slightly slimmer fit than our unisex equivalent, with a moderately higher waistband and a neater rise around the hips for a more flattering fit. Featuring a tapered leg with soft ribbed back calf panels and side pockets.

FABRIC: LIGHTWEIGHT MATT POLY FLEECE

FIT: WOMEN

SIZES: YOUTH: XS - S - M - L SENIOR: XXS - XS - S - M - L - XL - 2XL - 3XL - 4XL - 5XL

COLOURS: ONYX BLACK & OXFORD NAVY



ONYX BLACK



OXFORD NAVY

ACCESSORIES

2022





ELITE PERFORMANCE

EP: 0126 - PRO TRAINING VEST

A professional reversible training vest, created with soft feel binding to ensure maximum comfort whilst training.

FABRIC	HEAVYWEIGHT EYELET POLYESTER
FIT	UNISEX
SIZES	YOUTH: XS - S - M - L SENIOR: XXS - XS - S - M - L - XL - 2XL - 3XL - 4XL - 5XL
COLOURS	ROYAL/RED & YELLOW/GREEN



ROYAL/RED



YELLOW/GREEN

UTILITY

U: 0211 - BEANIE

Our soft knitted beanie features a fold up cuff and a full fleece lining. Built for training and off-field wear. A remastered Winter Bronx hat.

- FABRIC: ACRYLIC KNIT
- FIT: UNISEX
- SIZE: ONE SIZE
- COLOURS: ONYX BLACK & OXFORD NAVY



ONYX BLACK



OXFORD NAVY

UTILITY

U: 0212 - BOBBLE HAT

Our soft knitted bobble hat features a fold up cuff and a full fleece lining. Built for training and off-field wear.

- FABRIC: ACRYLIC KNIT
- FIT: UNISEX
- SIZE: ONE SIZE
- COLOURS: ONYX BLACK & OXFORD NAVY



ONYX BLACK



OXFORD NAVY

ELITE PERFORMANCE

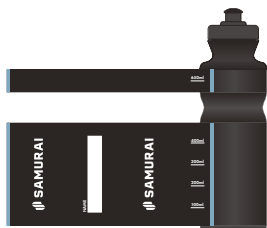
EP: 0118 - WATER BOTTLE

Built with Nylon shower proof outer deep wadding and featuring chevron stitching detail for superior warmth and insulation. This calf length puffer also offers storm cuffs and hood.

- MATERIAL: PLASTIC
- SIZE: 800 ML
- COLOUR: ONYX BLACK



ONYX BLACK



HERITAGE COLLECTION

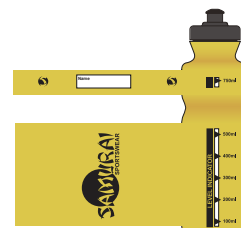
HC: 9642 - ECO WATER BOTTLE

A full coverage jacket to keep you cosy, warm and dry. Manufactured in our water repellent Smooth Nylon fabric with 6oz wadding and featuring a full hood and a drop tail hem.

- MATERIAL: BIO-POLYMER
- SIZE: 800 ML
- COLOUR: PROCESS YELLOW C



PROCESS YELLOW C



HERITAGE COLLECTION

HC: 9643 - FLURO WATER BOTTLE

This Fluro Water Bottle is made to be seen, it's fluorescent yellow colour is highly visible, helping to keep you hydrated during matches, training or throughout the day.

MATERIAL: PLASTIC
SIZE: 1L
COLOUR: FLURO YELLOW



FLURO YELLOW

UTILITY

U: 0210 - ANKLE SOCKS

Suitable for any occasion, comfortable and durable - from the most intense gym session to everyday life. Cotton Comfort Foot - a soft padded sole which provides you with enhanced comfort and control.

FABRIC: ORGANIC COTTON
FIT: UNISEX
SIZE: M: 3-6/ L: 7-11/ XL: 12-14
COLOUR: PURE WHITE



PURE WHITE

ELITE PERFORMANCE

EP: 0124 - EURO PREMIER SOCK

A traditional rugby sock; these pair with any kit. Built with our Cotton Comfort Foot - a soft padded sole providing enhanced comfort and control. With an extra strength ribbed elasticated turnover at the knee.

FABRIC: TRADITIONAL 75% NYLON / 25% COTTON FABRIC
FIT: UNISEX
SIZES: M: 3-6/ L: 7-11/ XL: 12-14
COLOURS: ROYAL/RED/BOTTLE/SKY/NAVY/BLACK & MAROON



NAVY



BLACK



SKY



ROYAL



BOTTLE GREEN



RED



MAROON



ELITE PERFORMANCE

EP: 0121 - TRAINER BALL

This All Element Trainer Ball is the ideal basic training ball for all ages and abilities. Made from combination rubber hi-grip outer 3 ply combo lamination and rigorously tested to ensure high quality performance and durability during all conditions. With an Enkay latex bladder and stitched with polyester thread, this ball is perfect to help you get match ready.

MATERIAL: SYNTHETIC RUBBER AND LEATHER COMPOUND

SIZES: SIZE 3, 4 & 5

COLOUR: PURPLE / BLUE



PURPLE / BLUE

ELITE PERFORMANCE

EP: 0120 - NEXT GEN ELITEX BALL

Raise your game this season by taking to the field with the Next Gen Elitex Match Ball. Reshaped, using special rubber compound technology, our world-class, high grade ball comes with four lining and specially modified air retention bladders and fully conforms to IRB regulations.

MATERIAL: SPECIFICALLY ENGINEERED POLY/COTTON

SIZE: SIZE 5

COLOUR: GREEN/BLUE



GREEN / BLUE

ELITE PERFORMANCE

EP: 0122 - CLUB MATCH BALL

This superior Club Match Ball is an ideal choice for amateur and professional players alike. With A-Grade natural high-grip outer finish and excellent shape guarantee, this ball is rigorously tested to guarantee our true flight technology. Complies with England Rugby Regulation 15 On Ball Sizes: Size 3 (Under 7, 8 & 9); Size 4 (Under 10, 11, 12, 13 & 14); Size 5 (Under 15 & above).

MATERIAL: SYNTHETIC RUBBER AND LEATHER COMPOUND

SIZES: SIZE 3, 4 & 5

COLOUR: YELLOW / RED



YELLOW / RED

ELITE PERFORMANCE

EP: 0123 - QUEST PROMO RUGBY BALL

Our SAMURAI Quest Promo Mini Rugby Ball is excellent for promotional use, perfect for gifts or give-aways at events or club presentations.

MATERIAL: SYNTHETIC RUBBER AND LEATHER COMPOUND

SIZE: SIZE 6"

COLOUR: GREEN / ORANGE



GREEN / ORANGE

UTILITY

U: 0213 - BACKPACK

An all-purpose backpack for everyday use. With a functional heavy duty handle and airflow vent section on the back. Featuring internal and external pockets for additional storage.

FABRIC: HEAVYWEIGHT 1680D POLYESTER

SIZE: 48 X 34 X 20CM

COLOURS: ONYX BLACK & OXFORD NAVY



ONYX BLACK



OXFORD NAVY

UTILITY

U: 0216 - TOURIST BAG

Made with multiple pockets and sections to keep your items separate, safe and secure. Ideal for travel with a retractable pull handle on one end and two wheels. With a removable wet compartment, external zip pockets and zip support buckles.

FABRIC: HEAVYWEIGHT 1680D POLYESTER

SIZE: 70 X 37 X 36CM

COLOUR: ONYX BLACK



ONYX BLACK

UTILITY

U: 0215 - MATCH DAY BAG

An elite heavyweight bag - the ideal size for a personal kit bag. With four external zipped pockets, an internal trinket pocket, padded handle and optional shoulder strap

FABRIC: HEAVYWEIGHT 1680D POLYESTER

SIZES: 66 X 36 X 30CM

COLOUR: ONYX BLACK & OXFORD NAVY



ONYX BLACK



OXFORD NAVY

UTILITY

U: 0218 - GYM BAG

A classic lightweight multi-purpose shoulder bag - optimal for gym or leisure use. With drawstring straps, a sleek side zip compartment and internal pocket.

FABRIC: 420D POLYESTER

SIZE: 36.5 X 50CM

COLOUR: ONYX BLACK



ONYX BLACK

UTILITY

U: 0217 - WEEKEND BAG

Ideal for cabin luggage with a retractable handle, side carry handle and wheels for easier transport and travel.

FABRIC: 600D + 420D POLYESTER

SIZES: 53 X 20 X 33.5CM

COLOUR: ONYX BLACK



ONYX BLACK

UTILITY

U: 0214 - BOOT BAG

Engineered with a wipe clean interior and outer. Including breathable mesh inserts to ensure good air flow and to keep your kit stay fresh for longer. With external zip pockets and an easily accessible top flap.

FABRIC: HEAVYWEIGHT 1680D POLYESTER

SIZES: 36 X 17 X 21CM

COLOUR: ONYX BLACK



ONYX BLACK



SIZE GUIDELINES

As part of our rebranding, we have re-energised and standardised our sizing guidelines with the goal of being gender inclusive.

As of APRIL 2022, SAMURAI sizing for all Stock and Bespoke Products will be as follows:

UNISEX (VAT Applicable)	XXS	XS	S	M	L	XL	2XL	3XL	4XL	5XL
To fit chest (inches)	36"	38"	40"	42"	44"	46"	48"	50"	52"	54"
To fit waist (inches)	29"	30"	32"	34"	36"	38"	40"	42"	44"	46"
To fit chest (cms)	87	92	102	107	112	117	122	127	132	137
To fit waist (cms)	74	76	82	87	92	97	102	107	112	117

WOMEN (VAT Applicable)	XXS	XS	S	M	L	XL	2XL	3XL	4XL
To fit chest (inches)	30"	32"	34"	36"	38"	40"	42"	44"	46"
To fit waist (inches)	24"	25"	26"	28"	30"	32"	34"	36"	38"
To fit chest (cms)	76	82	87	92	97	102	107	112	117
To fit waist (cms)	61	64	66	71	76	82	87	92	97

CHILDREN	JUNIOR				YOUTH			
	XS	S	M	L	XS	S	M	L
To fit chest (inches)	19"	21"	23"	25"	27"	29"	31"	33"
To fit waist (inches)	18"	20"	22"	23"	24"	25"	27"	28"
To fit chest (cms)	49	54	59	64	69	74	79	84
To fit waist (cms)	46	51	56	59	61	64	69	71

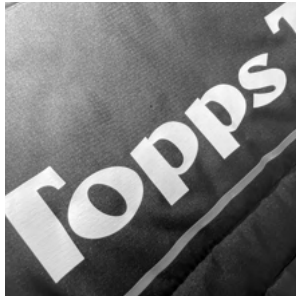
Please note: Larger sizes are available, subject to a minimum order of 10pcs.

DECORATION

We offer 4 forms of decoration. All you need to do is supply us with your club logo, crest & sponsor details in the correct format.



EMBROIDERY



HEAT TRANSFER



SUBLIMATION
(BESPOKE PRODUCTS ONLY)



WOVEN BADGE

ARTWORK

Logos should be supplied in one of the following formats:



Non Vectorised Example



Vectorised Example

VECTORISED FILE

(.ai or .eps. The Artwork must have been created in Adobe Illustrator)

HIGH RESOLUTION PDF

.pdf. This format is fine for all decoration as long as the original file was produced in Adobe Illustrator.

FONTS

Provide font names where applicable, or outline the font if providing an .ai or .eps file.

COLOURS

PMS, Pantone or Madera code numbers must be provided if you require an exact match, otherwise standard SAMURAI colours will be used.

STANDARD NAME & NUMBER

SAMURAI can offer you a wide range of font options. Names can be a maximum of 12 letters up to 25cm wide. We have a selection of fonts available including our New for 2022 SAMURAI exclusive font PRIMO.

MICROLIGHT RIPSTOP

A fashionable multi-use lightweight fabric popular for leisurewear use, which is both durable, hard-wearing.

BONDED MATT POLY FLEECE

A smooth knit face with a cosy brushed fleece backing, perfectly provides thermal warmth and comfort. Our iconic Matt Poly Fleece offers great durability with comfort and warmth.

BONDED SOFT SHELL

The unique 3-layer structure gives this fabric a smooth face with a water repellent and breathable membrane.

DIAMOND POLY KNIT

The ideal choice for training & leisurewear usage. This fabric has a textured sports finish, with moisture management system & a box fresh antibacterial finish.

COTTON-TOUCH KNIT

High quality cotton yarn mix with spandex and additional wicking function for training or leisure.

PIQUE KNIT COTTON

A traditional cotton rich textured fabric for leisure or multi-sport use.

POLYESTER DRILL

This durable, lightweight fabric is used for our Premier Match Rugby Shorts. Functional for match play uses. Soft lightweight and comfortable.

IKOMA

A medium-weight eyelet textured knit in a durable polyester yarn, treated with our moisture management system.

TASLAN POLYESTER

A modern, high-tech, woven fabric. Strong and durable; ideal for multisport use.

ACRYLIC KNIT

Used for our hats, this acrylic yarn is resilient but surprisingly soft & lofty.

COTTON-TOUCH FLEECE

A medium weight cotton rich fleece, with super soft backing and smoothest face for a cleaner finish.

POLYESTER ELASTANE KNIT

Used for our leggings, this fabric is dense yet has a soft finish, with high stretch for a contoured secure fit.

LIGHTWEIGHT MATT POLY FLEECE

Our iconic Matt Poly Fleece remastered; creating a lightweight version ideal for training and leisure.

HIGH DENSITY NYLON – WADDING FILLED

Fine showerproof woven fabric with a semi-dull face, used in conjunction with fibre or wadding for our jackets.

NEW WOVEN POLYESTER & PU LAMINATE

Used for our outerwear products, this two-layer construction offers a waterproof and breathable function, with a subtle weave to face.



 **SAMURAI**

SAMURAI-SPORTS.COM