



SAMURAI

SAMURAI-SPORTS.COM

RUGBY // TEAMWEAR // 2024-25



For more than 28 years, SAMURAI has set the gold standard in custom rugby apparel - forging a legacy of unrivalled product performance and quality by curating on-field and off-field products that are built to perform at the highest level in Rugby.

Today, SAMURAI sits on the intersection where sport converges with lifestyle, meticulously creating high-performance apparel built with the modern athlete in mind. Every product designed aligns with our core brand values and design principles, ensuring anything we put our name to is built for purpose.

Irrespective of your club's identity, SAMURAI stands as the epitome of product distinction and design. By embracing the colours and heritage of all teams, we uniquely position ourselves as the marginal gain for your club's success, both on and off the field.

Experience the same feeling as our elite athletes when you wear your SAMURAI kit. As a brand, we extend the same level of product quality to our grassroots teams as we do to our elite global partners, ensuring that no matter the level at which you compete, your team will proudly wear the finest kit available in the market.

ICONIX SHIRT

MODEL SIZE: M

 SAMURAI


CORNISH
PIRATES

PENWITH
COLLEGE

MATCHPLAY

SHIRTS

SHORTS

SOCKS

WARM UP & TRAINING

04

RUGBY // MATCH PLAY // SHIRTS



ICONIX SHIRT

The elite choice, unmatched and unrivalled. Constructed with our exclusive Kohino 4DX fabric to produce revolutionary enhanced performance capabilities. Acting as a second skin, this shirt is the superior option preferred by our professional teams.

*This shirt is designed to be skin-tight. If a looser fit is required, please consider sizing up.

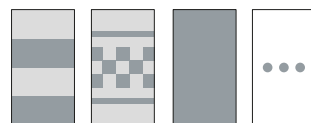
FIT	COMPETITION
FABRIC	KOHINO 4DX SUBLIMATED
SIZES*	MENS: XXS - XS - S - M - L - XL - 2XL - 3XL - 4XL - 5XL - 6XL WOMENS: XXS - XS - S - M - L - XL - 2XL - 3XL - 4XL - 5XL

NECKLINE



V-NECK ROUND

STYLE OPTIONS



HOOPS PATTERNS SOLID OTHER



NEW FOR 2024/25

ARTEMIS SHIRT

New for 2024: Built from nature for the modern athlete - Artemis empowered hunters and athletes alike. In the same spirit, the Artemis jersey is designed to empower the modern rugby player, offering not just high performance but a meaningful connection to the environment. This jersey is a statement — a commitment to embracing natural resource and talent.

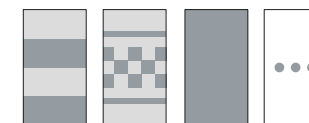
FIT	ATHLETIC
FABRIC	RECYCLED IKOMA (WITH KOHINO PANELS) SUBLIMATED
SIZES	MENS: XXS - XS - S - M - L - XL - 2XL - 3XL - 4XL - 5XL JNR BOYS: JM - JL - YXS - YS - YM - YL WOMENS: XXS - XS - S - M - L - XL - 2XL - 3XL - 4XL JNR GIRLS: JM - JL - YXS - YS - YM - YL

NECKLINE



STANDARD SAMOAN OPTIMAX

STYLE OPTIONS



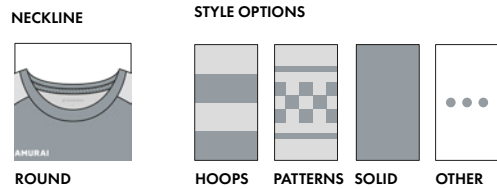
HOOPS PATTERNS SOLID OTHER



ECOMAX SHIRT

Specifically developed using durable, match-ready fabrics and available with a round collar to provide a high quality entry level shirt, ideal for grassroots - from beginner to experienced game-play.

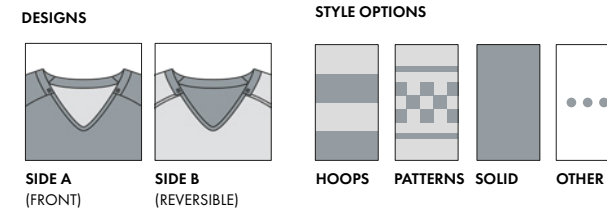
FIT	ATHLETIC
FABRIC	200GM IKOMA SUBLIMATED
SIZES	MENS: XXS - XS - S - M - L - XL - 2XL - 3XL - 4XL - 5XL JNR BOYS: JM - JL - YXS - YS - YM - YL WOMENS: XXS - XS - S - M - L - XL - 2XL - 3XL - 4XL JNR GIRLS: JM - JL - YXS - YS - YM - YL



DUOMAX SHIRT

A fully reversible rugby jersey with an optimax collar, designed to offer two completely different unique designs in one convenient shirt.

FIT	REGULAR
FABRIC	KOHINO 4DX SUBLIMATED
SIZES	MENS: XXS - XS - S - M - L - XL - 2XL - 3XL - 4XL - 5XL JNR BOYS: JM - JL - YXS - YS - YM - YL WOMENS: XXS - XS - S - M - L - XL - 2XL - 3XL - 4XL JNR GIRLS: JM - JL - YXS - YS - YM - YL



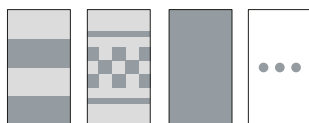


PREMIER SHORT

The specialist short option. Designed with an integral gum shield pocket and developed with expert flex-fit panelling for unrestricted movement and optimum support.

FIT	REGULAR
FABRIC	POLYESTER DRILL WITH STRETCH PANEL CUT & SEW OR SUBLIMATED
SIZES*	<p>MENS: XXS - XS - S - M - L - XL - 2XL - 3XL - 4XL - 5XL</p> <p>JNR BOYS: JM - JL - YXS - YS - YM - YL</p> <p>WOMENS: XXS - XS - S - M - L - XL - 2XL - 3XL - 4XL</p> <p>JNR GIRLS: JM - JL - YXS - YS - YM - YL</p>

STYLE OPTIONS



HOOPS **PATTERNS** **SOLID** **OTHER**

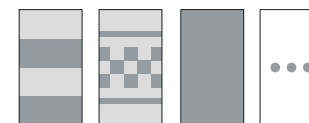


ECOMAX SHORT

Created to maintain peak performance levels, these match-quality shorts are ideal for both professional and amateur game-play.

FIT	REGULAR
FABRIC	IKOMA SUBLIMATED
SIZES	<p>MENS: XXS - XS - S - M - L - XL - 2XL - 3XL - 4XL - 5XL</p> <p>JNR BOYS: JM - JL - YXS - YS - YM - YL</p> <p>WOMENS: XXS - XS - S - M - L - XL - 2XL - 3XL - 4XL</p> <p>JNR GIRLS: JM - JL - YXS - YS - YM - YL</p>

STYLE OPTIONS



HOOPS **PATTERNS** **SOLID** **OTHER**



'Working with SAMURAI is an incredible opportunity for Leicester Tigers to create a true club-wide mentality amongst players, staff, supports and our wider community. They are a proven and popular brand, used by professional and local community teams, both in the region and world-wide. We're excited about the quality of their products and the level of visual customisation that SAMURAI and the team are able to offer.'

Director of Rugby, Leicester Tigers

ICONIX SHIRT

PAGE 04

WATCH NOW



LEICESTER TIGERS



PREMIER SOCK

The professional choice, with advanced design and intarsia knit options and built with our Cotton Comfort Foot - a soft padded sole to provide enhanced comfort and control with every step.

FOOT	COMFORT FOOT	
FABRIC	NYLON + ELASTANE	
SIZES	XXS	(UK SHOE SIZE C6 - 8)
	XS	(UK SHOE SIZE C9 - 12)
	S	(UK SHOE SIZE 12 - 2)
	M	(UK SHOE SIZE 3 - 6.5)
	L	(UK SHOE SIZE 7 - 11)
	XL	(UK SHOE SIZE 12 - 14)

DESIGN OPTIONS



SOLID COLOUR **HOOPS** **TEXT** **INTARSIA**
(LIMITATIONS APPLY)



CLUB SOCK

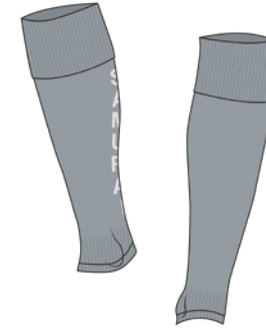
Comfortable, durable and fit for performance. With a horizontal knit and constructed with a self-fabric padded sole to offer a more traditional sporting sock.

FOOT	STANDARD FOOT	
FABRIC	NYLON + ELASTANE	
SIZES	XXS	(UK SHOE SIZE C6 - 8)
	XS	(UK SHOE SIZE C9 - 12)
	S	(UK SHOE SIZE 12 - 2)
	M	(UK SHOE SIZE 3 - 6.5)
	L	(UK SHOE SIZE 7 - 11)
	XL	(UK SHOE SIZE 12 - 14)

DESIGN OPTIONS



SOLID COLOUR **TEXT**



FOOTLESS SOCK

Extend your pitch essentials with our footless sock - with ventilation for added comfort and a secure fit to keep shin pads in place. *Sizes are based on the average foot to calf ratio and are guidelines only.

FOOT	N/A	
FABRIC	NYLON + ELASTANE	
SIZES	XXS	(UK SHOE SIZE C6 - 8)
	XS	(UK SHOE SIZE C9 - 12)
	S	(UK SHOE SIZE 12 - 2)
	M	(UK SHOE SIZE 3 - 6.5)
	L	(UK SHOE SIZE 7 - 11)
	XL	(UK SHOE SIZE 12 - 14)

DESIGN OPTIONS



SOLID COLOUR **HOOPS** **TEXT** **INTARSIA**
(LIMITATIONS APPLY)

09

ICONIX SHIRT

PAGE 04



'I have always had a great relationship with the team at SAMURAI which has made my role in sorting kit for the Staff and Players so much easier and much more constructive which as you know is a huge help when it comes to that time of year each season to sort for the next season.'

Tony Walker, Team Manager, Exeter Chiefs



WINDBREAKER

Created for additional weather protection with hard-wearing, water resistant and lightweight fabric to protect from the elements during a pre-match warm-up. Made for non-contact training.

FIT	REGULAR
FABRIC	PU COATED SMOOTH WOVEN & MESH LINED
SIZES	<p>MENS: XXS - XS - S - M - L - XL - 2XL - 3XL - 4XL - 5XL</p> <p>JNR BOYS: JM - JL - YXS - YS - YM - YL</p> <p>WOMENS: XXS - XS - S - M - L - XL - 2XL - 3XL - 4XL</p> <p>JNR GIRLS: JM - JL - YXS - YS - YM - YL</p>

AVAILABLE COLOURS



● ● - AVAILABLE FROM STOCK SEE PAGE 39



SHIELD TRAINING TOP

An ideal accompaniment for wet or cold outdoor training, this top is constructed with a fleece lining for additional warmth and comfort. Full contact top.

FIT	REGULAR
FABRIC	BONDED SOFT SHELL WITH PU MEMBRANE
SIZES	<p>MENS: XXS - XS - S - M - L - XL - 2XL - 3XL - 4XL - 5XL</p> <p>JNR BOYS: JM - JL - YXS - YS - YM - YL</p> <p>WOMENS: XXS - XS - S - M - L - XL - 2XL - 3XL - 4XL</p> <p>JNR GIRLS: JM - JL - YXS - YS - YM - YL</p>

AVAILABLE COLOURS



● ● - AVAILABLE FROM STOCK SEE PAGE 39



SUB COAT

Designed as the ultimate side-line coat with a grey deep pile fleece lining to ensure players are warm and match ready. Featuring deep side pockets, vented back hem and a chunky, quick release zip.

FIT	OVERSIZED						
FABRIC	PU COATED TASLAN NYLON WITH DEEP - PILE FLEECE LINING						
SIZES	<p>UNISEX:</p> <table border="0"> <tr> <td>S</td> <td>M</td> <td>L</td> </tr> <tr> <td>(SB - MB - LB / 8 - 10 - 12)</td> <td>(XS - S - M / 14 - 16 - 18)</td> <td>(L - XL - 2XL / 20 - 22)</td> </tr> </table>	S	M	L	(SB - MB - LB / 8 - 10 - 12)	(XS - S - M / 14 - 16 - 18)	(L - XL - 2XL / 20 - 22)
S	M	L					
(SB - MB - LB / 8 - 10 - 12)	(XS - S - M / 14 - 16 - 18)	(L - XL - 2XL / 20 - 22)					

AVAILABLE COLOURS



● ● ● - AVAILABLE FROM STOCK SEE PAGE 41



RUGBY BALLS

Raise your game this season by taking to the field with the Bespoke rugby ball. Using one of our three ball types, add your colours and logos and create a unique design. Each of our ball types come with a specific design that you can recolour, or you can have a completely bespoke design created at request.

FABRIC SPECIFICALLY ENGINEERED SYNTHETIC RUBBER

SIZES
NEXT GEN - SIZE 5
TRAINER BALL - SIZE 3, 4 & 5
CLUB MATCH - SIZE 3, 4 & 5

BALL OPTIONS*



NEXT GEN ELITEX BALL



TRAINER BALL



CLUB MATCH BALL

*More information on these balls can be found page 35



CUSTOM RUGBY BALL

CLUB MATCH BALL

RUGBY // ACCESSORIES



HARLIQUINNS



MINIMAL



HORIZON



STOIC



TRI-BAND



TRADITIONAL

RUGBY ORIGINALS GRAPHICS PACK



QUANTUM MUSE



COSMIC CASCADE



SUPERNOVA



ECHO



STREAK



ECLIPSE DUSK



GALACTIC



AUROA BLAZE



NEBULA FUSION



LUNAR RADIANCE

CELESTIAL GRAPHICS PACK

In the expansive cosmic arena of sport apparel, SAMURAI presents its graphic lineup for the 24/25 season : the Celestial Graphics Pack. Each unique design in this pack pays homage to the formidable power, unity, and captivating beauty reminiscent of celestial wonders that grace rugby fields across the globe - creating a fusion of your club's identity and history with the forces elevated design.

STREAK

CGP-2425-01

QUANTUM MUSE

CGP-2425-02

GALACTIC

CGP-2425-03

COSMIC CASCADE

CGP-2425-04

ECLIPSE DUSK

CGP-2425-05

SUPERNOVA

CGP-2425-06

AUROA BLAZE

CGP-2425-07

NEBULA FUSION

CGP-2425-08

LUNAR RADIANCE

CGP-2425-09

CUSTOM KIT BUILDER

IMMERSE YOURSELF & BRING YOUR CLUB'S IDENTITY TO LIFE AT [SAMURAI-SPORTS.COM](https://samurai-sports.com)

SAMURAI offers a diverse range of solutions to bring your team's identity to life.

Choose from an extensive collection of design options tailored to meet your clubs needs. Our designers can assist with bespoke kit that is curated to your unique identity. Alternatively, our core stock options are available in a matter of weeks should you be in need of quick delivery.



ENDO PULLOVER

PAGE 21

 SAMURAI



LEISUREWEAR

2024/25 THEMES

CORE +

OUTERWEAR

ADDITIONAL

Choosing one of our premium leisurewear ranges is just the beginning. Each theme can be expanded upon to create a truly unique design. Choose between our cut & sew, part-sublimated and fully sublimated options for a leisurewear range that is perfectly suited to you.



CUT AND SEW

Constructed from separate panels sewn together, the cut and sew option allows you to create a leisurewear range perfectly suited to your needs; offering multiple piping, taping and stitching details and the chance to combine different fabrics to create a contrast of textures.

KEY FEATURES

Stock fabrics
Contrasting panels



ONYX BLACK BLAZE RED PURE WHITE



PART SUBLIMATED

The best of both, part-sublimated items combine our exclusive leisurewear themes with endless colour and pattern possibilities. With the ability to contrast different textured fabrics, this option takes our leisurewear ranges one step further.

KEY FEATURES

Your colours
Your pattern
Contrasting fabrics



ONYX BLACK PURE WHITE SUBLIMATED



FULLY SUBLIMATED

The premium option that offers complete creative freedom - fully sublimated items have infinite design possibilities. Created through the sublimation process of printing directly onto a fabric; this technique gives you an unlimited amount of colour and pattern options to create a truly unique design. Your imagination is the limit.

KEY FEATURES

Your colours
Your pattern
Full body sublimated pattern
Unlimited Logo and Sponsors



SUBLIMATED



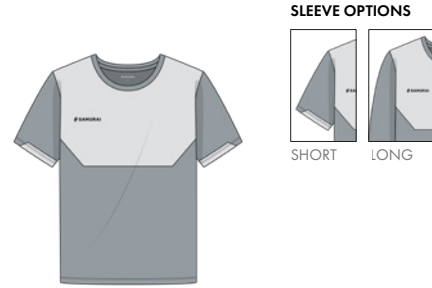
NEW FOR 2024/25

VALOR

Unleash the power of distinction and a manifestation of precision and style. Elevate your presence on the field with contrasting panels and angular finishes that deliver a dynamic aesthetic. Valor is a bold statement of excellence inspired by the spirit of rugby.

SIZE RANGE

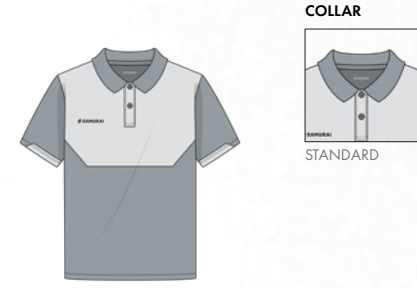
MENS: XXS - XS - S - M - L - XL - 2XL - 3XL - 4XL - 5XL
 JNR BOYS: JM - JL - YXS - YS - YM - YL
 WOMENS: XXS - XS - S - M - L - XL - 2XL - 3XL - 4XL
 JNR GIRLS: JM - JL - YXS - YS - YM - YL



T-SHIRT

A versatile essential designed for optimum movement, style and comfort; whatever the activity.

FIT ATHLETIC
FABRIC SMOOTH INTERLOCK - **CUT & SEW** OR **SUBLIMATED**
 COTTON 185GM - **CUT & SEW**



POLO SHIRT

Creating a complete team image, lightweight and classic in style - a traditional addition to any leisure range.

FIT ATHLETIC
FABRIC DIAMOND POLY - **CUT & SEW** OR **SUBLIMATED**
 COTTON 220GM - **CUT & SEW**



VEST

Designed to maintain comfort and breathability whilst performing, allowing you to move freely during every exercise.

FIT ATHLETIC
FABRIC DIAMOND POLY - **CUT & SEW** OR **SUBLIMATED**
 SMOOTH INTERLOCK - **CUT & SEW** OR **SUBLIMATED**

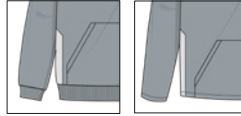
MULTISPORT SHORT

Providing support and freedom of movement during every exercise whilst maintaining performance levels.

FIT 5" INSEAM
FABRIC DIAMOND POLY - **CUT & SEW** OR **SUBLIMATED**
 SMOOTH INTERLOCK - **CUT & SEW** OR **SUBLIMATED**
 TASLON POLY - **CUT & SEW**
 BRUSHED FLEECE - **CUT & SEW**



HEM



RIBBED
(STANDARD FOR
BRUSHED FLEECE)

TURNUED UP
(STANDARD FOR
MATT POLY FLEECE)

HOODIE

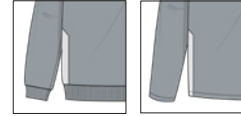
Built for a relaxed look, with supreme softness and optimum comfort - perfect for leisure and casual wear.

FIT / FABRIC **REGULAR / BRUSHED FLEECE - CUT & SEW**
ATHLETIC / MATT POLY FLEECE - CUT & SEW OR SUBLIMATED

POCKETS **POUCH OR SIDE SEAM**



HEM



TURNUED UP
(STANDARD FOR
MATT POLY FLEECE)

RIBBED
(STANDARD FOR
BRUSHED FLEECE)

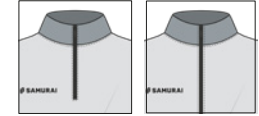
SWEATER

Designed with leisure in mind, this sweater combines a laid-back look with premium fleece fabric for maximum comfort and style.

FIT / FABRIC **REGULAR / BRUSHED FLEECE - CUT & SEW**
ATHLETIC / MATT POLY FLEECE - CUT & SEW OR SUBLIMATED



ZIP OPTIONS



1 / 4 ZIP

FULL ZIP

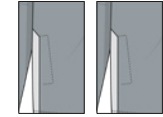
PULLOVER

A favourite among teams, ensuring players are warm and match ready - the ideal mid-layer.

FIT **ATHLETIC**

FABRIC **MATT POLY FLEECE - CUT & SEW OR SUBLIMATED**

POCKET

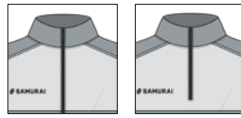


TURNUED
OPEN

SIDE SEAM
ZIPPED



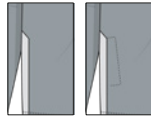
COLLAR



FULL ZIP

1 / 4 ZIP

POCKETS



NONE

ZIPPED

TRACKTOP

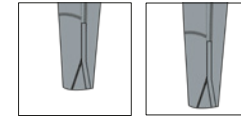
Ideal for both pitch-side and leisure, the ultimate combination of performance and leisure. Pair with the leisure Track Pant for a complete tracksuit.

FIT **ATHLETIC**

FABRIC **SMOOTH NYLON - CUT & SEW OR PART SUBLIMATED**
TASLON POLY - CUT & SEW OR PART SUBLIMATED
MICROLIGHT RIPSTOP - CUT & SEW OR PART SUBLIMATED



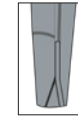
LEG LENGTH



REGULAR

LONG

SIDE LEG ZIP



12"

TAPERED TRACK PANT

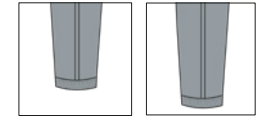
Designed and constructed with a modern style tapered fit, ideal for everyday leisure or training.

FIT **TAPERED**

FABRIC **MATT POLY FLEECE - CUT & SEW OR PART SUBLIMATED**
LIGHTWEIGHT MATT POLY FLEECE - CUT & SEW OR PART SUBLIMATED



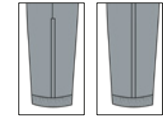
LEG LENGTH



REGULAR

LONG

SIDE LEG ZIP



12"

23"

TRACK PANT

Allowing enhanced movement and agility without compromising on comfort. For the ultimate tracksuit, couple with the leisure Track Top.

FIT **ATHLETIC**

FABRIC **SMOOTH NYLON - CUT & SEW OR PART SUBLIMATED**
TASLON POLY - CUT & SEW OR PART SUBLIMATED
MICROLIGHT RIPSTOP - CUT & SEW OR PART SUBLIMATED
BRUSHED FLEECE - CUT & SEW



T-SHIRT



POLO



VEST



SWEATER



HOODIE



MULTISPORT SHORT



PULLOVER



TRACKTOP



TAPERED TRACK PANT



TRACK PANT



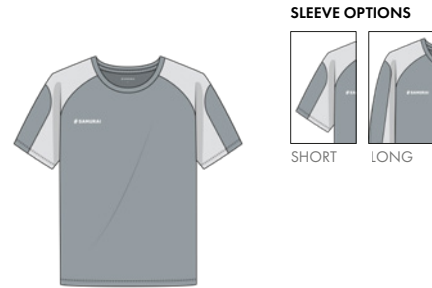


ENDO

Endo introduces a contemporary vision to leisurewear, blending boldness with modern aesthetics. Discover the allure of block panels that seamlessly come together, creating a striking contrast that defines this collection.

SIZE RANGE

MENS: XXS - XS - S - M - L - XL - 2XL - 3XL - 4XL - 5XL
 JNR BOYS: JM - JL - YXS - YS - YM - YL
 WOMENS: XXS - XS - S - M - L - XL - 2XL - 3XL - 4XL
 JNR GIRLS: JM - JL - YXS - YS - YM - YL



T-SHIRT

A versatile essential designed for optimum movement, style and comfort; whatever the activity.

FIT ATHLETIC
FABRIC SMOOTH INTERLOCK - **CUT & SEW OR SUBLIMATED**
 COTTON 185GM - **CUT & SEW**



POLO SHIRT

Creating a complete team image, lightweight and classic in style - a traditional addition to any leisure range.

FIT ATHLETIC
FABRIC DIAMOND POLY - **CUT & SEW OR SUBLIMATED**
 COTTON 220GM - **CUT & SEW**



VEST

Designed to maintain comfort and breathability whilst performing, allowing you to move freely during every exercise.

FIT ATHLETIC
FABRIC DIAMOND POLY - **CUT & SEW OR SUBLIMATED**
 SMOOTH INTERLOCK - **CUT & SEW OR SUBLIMATED**

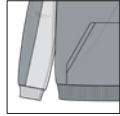
MULTISPORT SHORT

Providing support and freedom of movement during every exercise whilst maintaining performance levels.

FIT 5" INSEAM
FABRIC DIAMOND POLY - **CUT & SEW OR SUBLIMATED**
 SMOOTH INTERLOCK - **CUT & SEW OR SUBLIMATED**
 TASLON POLY - **CUT & SEW**
 BRUSHED FLEECE - **CUT & SEW**



HEM



RIBBED
(STANDARD FOR
BRUSHED FLEECE)



TURNED UP
(STANDARD FOR
MATT POLY FLEECE)

HOODIE

Built for a relaxed look, with supreme softness and optimum comfort - perfect for leisure and casual wear.

FIT / FABRIC **REGULAR** / BRUSHED FLEECE - **CUT & SEW**
ATHLETIC / MATT POLY FLEECE - **CUT & SEW** OR **SUBLIMATED**

POCKETS **POUCH** OR **SIDE SEAM**



HEM



TURNED UP
(STANDARD FOR
MATT POLY FLEECE)



RIBBED
(STANDARD FOR
BRUSHED FLEECE)

SWEATER

Designed with leisure in mind, this sweater combines a laid-back look with premium fleece fabric for maximum comfort and style.

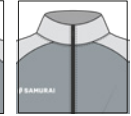
FIT / FABRIC **REGULAR** / BRUSHED FLEECE - **CUT & SEW**
ATHLETIC / MATT POLY FLEECE - **CUT & SEW** OR **SUBLIMATED**



ZIP OPTIONS



1/4 ZIP



FULL ZIP

PULLOVER

A favourite among teams, ensuring players are warm and match ready - the ideal mid-layer.

FIT **ATHLETIC**

FABRIC **MATT POLY FLEECE - CUT & SEW** OR **SUBLIMATED**

POCKETS



TURNED
OPEN



SIDE SEAM
ZIPPED



COLLAR



FULL ZIP



1/4 ZIP

POCKETS



NONE



ZIPPED

TRACKTOP

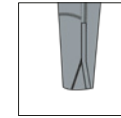
Ideal for both pitch-side and leisure, the ultimate combination of performance and leisure. Pair with the leisure Track Pant for a complete tracksuit.

FIT **ATHLETIC**

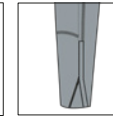
FABRIC **SMOOTH NYLON - CUT & SEW** OR **PART SUBLIMATED**
TASLON POLY - CUT & SEW OR **PART SUBLIMATED**
MICROLIGHT RIPSTOP - CUT & SEW OR **PART SUBLIMATED**



LEG LENGTH

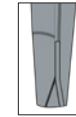


REGULAR



LONG

SIDE LEG ZIP



12"

TAPERED TRACK PANT

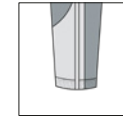
Designed and constructed with a modern style tapered fit, ideal for everyday leisure or training.

FIT **TAPERED**

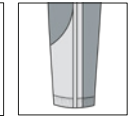
FABRIC **MATT POLY FLEECE - CUT & SEW** OR **PART SUBLIMATED**
LIGHTWEIGHT MATT POLY FLEECE - CUT & SEW OR **PART SUBLIMATED**



LEG LENGTH

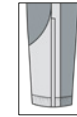


REGULAR

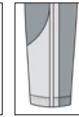


LONG

SIDE LEG ZIP



12"



23"

TRACK PANT

Allowing enhanced movement and agility without compromising on comfort. For the ultimate tracksuit, couple with the leisure Track Top.

FIT **ATHLETIC**

FABRIC **SMOOTH NYLON - CUT & SEW** OR **PART SUBLIMATED**
TASLON POLY - CUT & SEW OR **PART SUBLIMATED**
MICROLIGHT RIPSTOP - CUT & SEW OR **PART SUBLIMATED**
BRUSHED FLEECE - CUT & SEW

23



T-SHIRT



POLO



VEST



SWEATER



HOODIE



MULTISPORT SHORT



PULLOVER



TRACKTOP

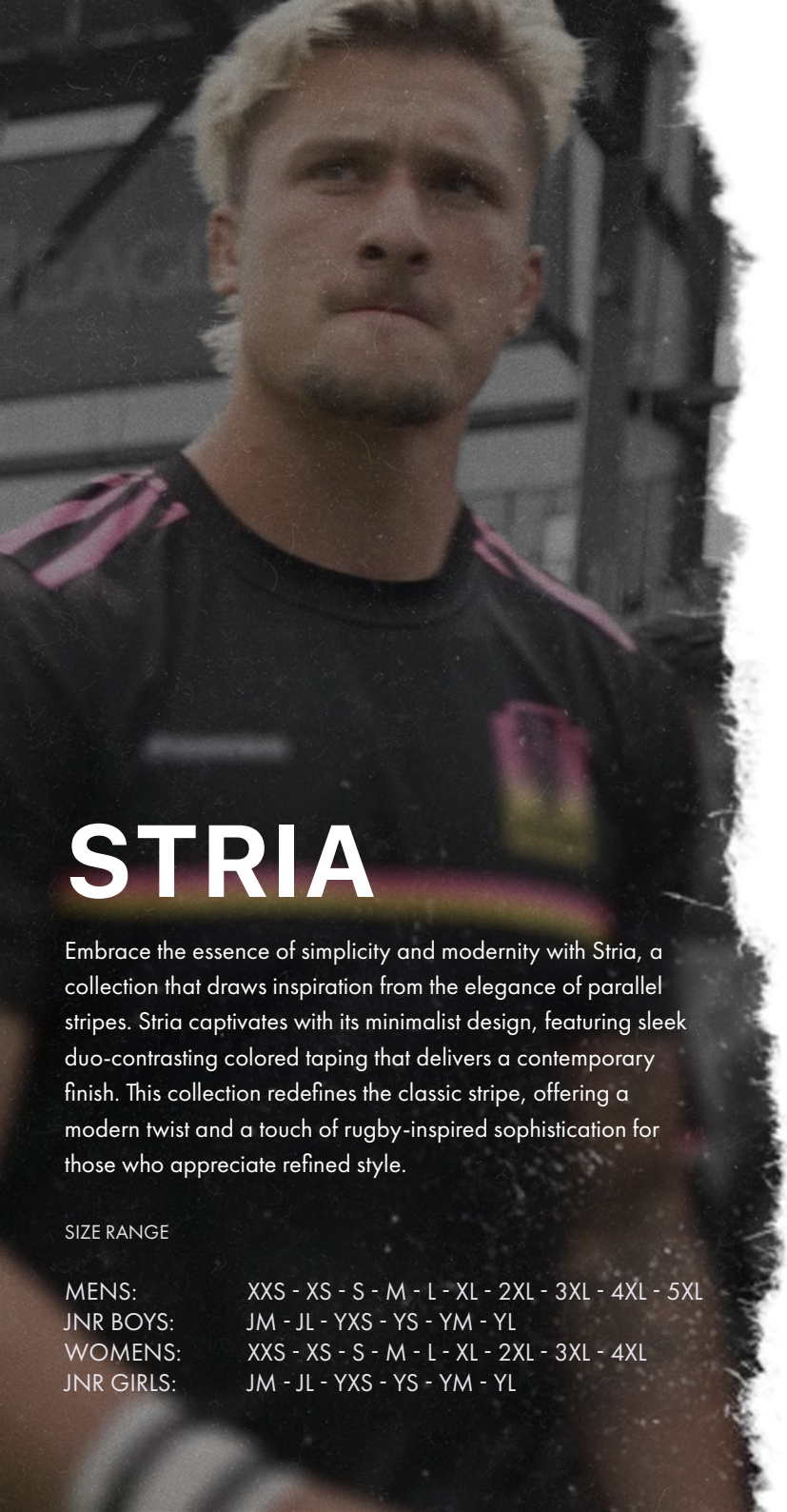


TAPERED TRACK PANT



TRACK PANT



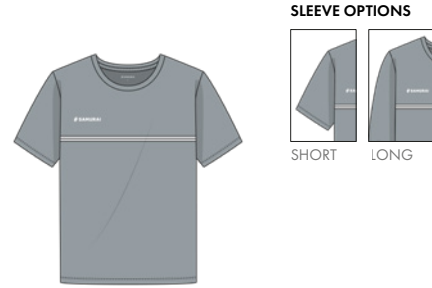


STRIA

Embrace the essence of simplicity and modernity with Stria, a collection that draws inspiration from the elegance of parallel stripes. Stria captivates with its minimalist design, featuring sleek duo-contrasting colored taping that delivers a contemporary finish. This collection redefines the classic stripe, offering a modern twist and a touch of rugby-inspired sophistication for those who appreciate refined style.

SIZE RANGE

MENS: XXS - XS - S - M - L - XL - 2XL - 3XL - 4XL - 5XL
 JNR BOYS: JM - JL - YXS - YS - YM - YL
 WOMENS: XXS - XS - S - M - L - XL - 2XL - 3XL - 4XL
 JNR GIRLS: JM - JL - YXS - YS - YM - YL



T-SHIRT

A versatile essential designed for optimum movement, style and comfort; whatever the activity.

FIT ATHLETIC
FABRIC SMOOTH INTERLOCK - **CUT & SEW** OR **SUBLIMATED**
 COTTON 185GM - **CUT & SEW**



POLO SHIRT

Creating a complete team image, lightweight and classic in style - a traditional addition to any leisure range.

FIT ATHLETIC
FABRIC DIAMOND POLY - **CUT & SEW** OR **SUBLIMATED**
 COTTON 220GM - **CUT & SEW**



VEST

Designed to maintain comfort and breathability whilst performing, allowing you to move freely during every exercise.

FIT ATHLETIC
FABRIC DIAMOND POLY - **CUT & SEW** OR **SUBLIMATED**
 SMOOTH INTERLOCK - **CUT & SEW** OR **SUBLIMATED**

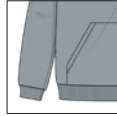
MULTISPORT SHORT

Providing support and freedom of movement during every exercise whilst maintaining performance levels.

FIT 5" INSEAM
FABRIC DIAMOND POLY - **CUT & SEW** OR **SUBLIMATED**
 SMOOTH INTERLOCK - **CUT & SEW** OR **SUBLIMATED**
 TASLON POLY - **CUT & SEW**
 BRUSHED FLEECE - **CUT & SEW**



HEM



RIBBED
(STANDARD FOR
BRUSHED FLEECE)



TURNUED UP
(STANDARD FOR
MATT POLY FLEECE)

HOODIE

Built for a relaxed look, with supreme softness and optimum comfort - perfect for leisure and casual wear.

FIT / FABRIC **REGULAR** / BRUSHED FLEECE - **CUT & SEW**
ATHLETIC / MATT POLY FLEECE - **CUT & SEW** OR **SUBLIMATED**

POCKETS **POUCH** OR **SIDE SEAM**



HEM



TURNUED UP
(STANDARD FOR
MATT POLY FLEECE)



RIBBED
(STANDARD FOR
BRUSHED FLEECE)

SWEATER

Designed with leisure in mind, this sweater combines a laid-back look with premium fleece fabric for maximum comfort and style.

FIT / FABRIC **REGULAR** / BRUSHED FLEECE - **CUT & SEW**
ATHLETIC / MATT POLY FLEECE - **CUT & SEW** OR **SUBLIMATED**



ZIP OPTIONS



1/4 ZIP



FULL ZIP

PULLOVER

A favourite among teams, ensuring players are warm and match ready - the ideal mid-layer.

FIT **ATHLETIC**

FABRIC **MATT POLY FLEECE - CUT & SEW** OR **SUBLIMATED**

POCKETS



TURNUED
OPEN



SIDE SEAM
ZIPPED



COLLAR



FULL ZIP



1/4 ZIP

POCKETS



NONE



ZIPPED

TRACKTOP

Ideal for both pitch-side and leisure, the ultimate combination of performance and leisure. Pair with the leisure Track Pant for a complete tracksuit.

FIT **ATHLETIC**

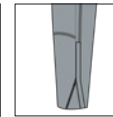
FABRIC **SMOOTH NYLON - CUT & SEW** OR **PART SUBLIMATED**
TASLON POLY - CUT & SEW OR **PART SUBLIMATED**
MICROLIGHT RIPSTOP - CUT & SEW OR **PART SUBLIMATED**



LEG LENGTH

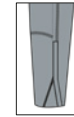


REGULAR



LONG

SIDE LEG ZIP



12"

TAPERED TRACK PANT

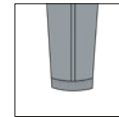
Designed and constructed with a modern style tapered fit, ideal for everyday leisure or training.

FIT **TAPERED**

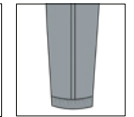
FABRIC **MATT POLY FLEECE - CUT & SEW** OR **PART SUBLIMATED**
LIGHTWEIGHT MATT POLY FLEECE - CUT & SEW OR **PART SUBLIMATED**



LEG LENGTH

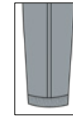


REGULAR

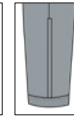


LONG

SIDE LEG ZIP



12"



23"

TRACK PANT

Allowing enhanced movement and agility without compromising on comfort. For the ultimate tracksuit, couple with the leisure Track Top.

FIT **ATHLETIC**

FABRIC **SMOOTH NYLON - CUT & SEW** OR **PART SUBLIMATED**
TASLON POLY - CUT & SEW OR **PART SUBLIMATED**
MICROLIGHT RIPSTOP - CUT & SEW OR **PART SUBLIMATED**
BRUSHED FLEECE - CUT & SEW



T-SHIRT



POLO



VEST



SWEATER



HOODIE



MULTISPORT SHORT



PULLOVER



TRACKTOP



TAPERED TRACK PANT



TRACK PANT



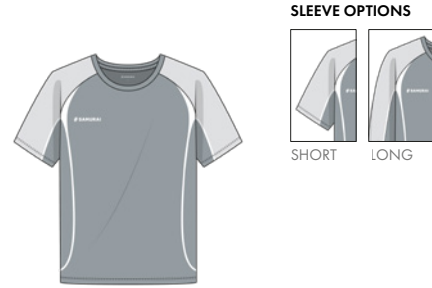


EUROPA

Embark on a nostalgic journey with Europa, a true SAMURAI classic that draws inspiration from the vibrant spirit of the 90s. This timeless collection artfully combines contrasting panels and accent piping, resulting in a harmonious fusion of curves and fluid design.

SIZE RANGE

MENS: XXS - XS - S - M - L - XL - 2XL - 3XL - 4XL - 5XL
 JNR BOYS: JM - JL - YXS - YS - YM - YL
 WOMENS: XXS - XS - S - M - L - XL - 2XL - 3XL - 4XL
 JNR GIRLS: JM - JL - YXS - YS - YM - YL



T-SHIRT

A versatile essential designed for optimum movement, style and comfort; whatever the activity.

FIT ATHLETIC
FABRIC SMOOTH INTERLOCK - **CUT & SEW OR SUBLIMATED**
 COTTON 185GM - **CUT & SEW**



POLO SHIRT

Creating a complete team image, lightweight and classic in style - a traditional addition to any leisure range.

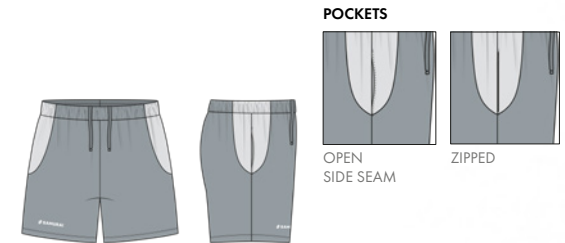
FIT ATHLETIC
FABRIC DIAMOND POLY - **CUT & SEW OR SUBLIMATED**
 COTTON 220GM - **CUT & SEW**



VEST

Designed to maintain comfort and breathability whilst performing, allowing you to move freely during every exercise.

FIT ATHLETIC
FABRIC DIAMOND POLY - **CUT & SEW OR SUBLIMATED**
 SMOOTH INTERLOCK - **CUT & SEW OR SUBLIMATED**



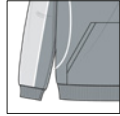
MULTISPORT SHORT

Providing support and freedom of movement during every exercise whilst maintaining performance levels.

FIT 5" INSEAM
FABRIC DIAMOND POLY - **CUT & SEW OR SUBLIMATED**
 SMOOTH INTERLOCK - **CUT & SEW OR SUBLIMATED**
 TASLON POLY - **CUT & SEW**
 BRUSHED FLEECE - **CUT & SEW**



HEM



RIBBED
(STANDARD FOR
BRUSHED FLEECE)



TURNED UP
(STANDARD FOR
MATT POLY FLEECE)

HOODIE

Built for a relaxed look, with supreme softness and optimum comfort - perfect for leisure and casual wear.

FIT / FABRIC **REGULAR / BRUSHED FLEECE - CUT & SEW**
ATHLETIC / MATT POLY FLEECE - CUT & SEW OR SUBLIMATED

POCKETS **POUCH OR SIDE SEAM**



HEM



TURNED UP
(STANDARD FOR
MATT POLY FLEECE)



RIBBED
(STANDARD FOR
BRUSHED FLEECE)

SWEATER

Designed with leisure in mind, this sweater combines a laid-back look with premium fleece fabric for maximum comfort and style.

FIT / FABRIC **REGULAR / BRUSHED FLEECE - CUT & SEW**
ATHLETIC / MATT POLY FLEECE - CUT & SEW OR SUBLIMATED



ZIP OPTIONS



1/4 ZIP



FULL ZIP

PULLOVER

A favourite among teams, ensuring players are warm and match ready - the ideal mid-layer.

FIT **ATHLETIC**

FABRIC **MATT POLY FLEECE - CUT & SEW OR SUBLIMATED**

POCKETS



TURNED
OPEN



SIDE SEAM
ZIPPED



COLLAR



FULL ZIP



1/4 ZIP

POCKETS



NONE



ZIPPED

TRACKTOP

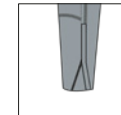
Ideal for both pitch-side and leisure, the ultimate combination of performance and leisure. Pair with the leisure Track Pant for a complete tracksuit.

FIT **ATHLETIC**

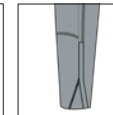
FABRIC **SMOOTH NYLON - CUT & SEW OR PART SUBLIMATED**
TASLON POLY - CUT & SEW OR PART SUBLIMATED
MICROLIGHT RIPSTOP - CUT & SEW OR PART SUBLIMATED



LEG LENGTH

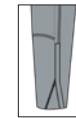


REGULAR



LONG

SIDE LEG ZIP



12"

TAPERED TRACK PANT

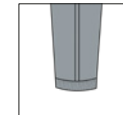
Designed and constructed with a modern style tapered fit, ideal for everyday leisure or training.

FIT **TAPERED**

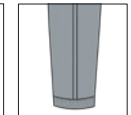
FABRIC **MATT POLY FLEECE - CUT & SEW OR PART SUBLIMATED**
LIGHTWEIGHT MATT POLY FLEECE - CUT & SEW OR PART SUBLIMATED



LEG LENGTH

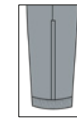


REGULAR

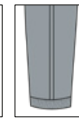


LONG

SIDE LEG ZIP



12"



23"

TRACK PANT

Allowing enhanced movement and agility without compromising on comfort. For the ultimate tracksuit, couple with the leisure Track Top.

FIT **ATHLETIC**

FABRIC **SMOOTH NYLON - CUT & SEW OR PART SUBLIMATED**
TASLON POLY - CUT & SEW OR PART SUBLIMATED
MICROLIGHT RIPSTOP - CUT & SEW OR PART SUBLIMATED
BRUSHED FLEECE - CUT & SEW



T-SHIRT



POLO



VEST



SWEATER



HOODIE



MULTISPORT SHORT



PULLOVER



TRACKTOP

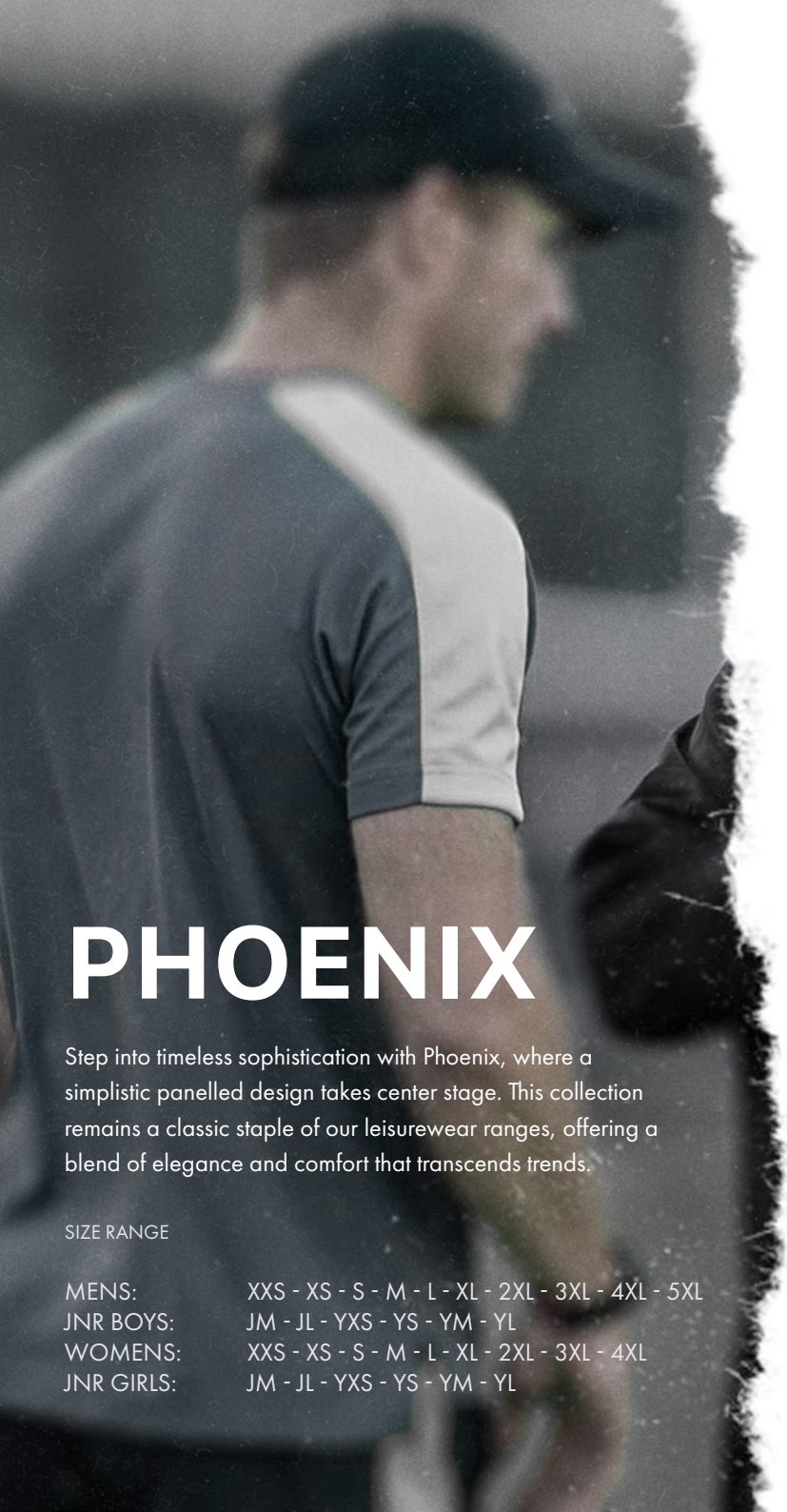


TAPERED TRACK PANT



TRACK PANT



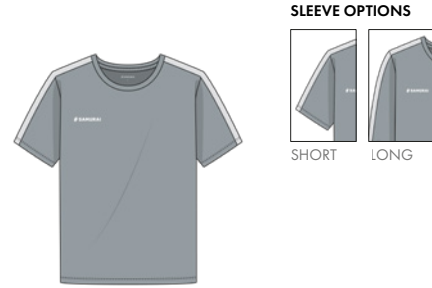


PHOENIX

Step into timeless sophistication with Phoenix, where a simplistic panelled design takes center stage. This collection remains a classic staple of our leisurewear ranges, offering a blend of elegance and comfort that transcends trends.

SIZE RANGE

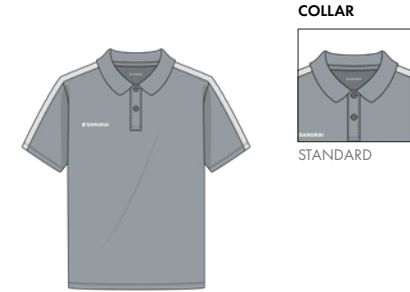
MENS: XXS - XS - S - M - L - XL - 2XL - 3XL - 4XL - 5XL
 JNR BOYS: JM - JL - YXS - YS - YM - YL
 WOMENS: XXS - XS - S - M - L - XL - 2XL - 3XL - 4XL
 JNR GIRLS: JM - JL - YXS - YS - YM - YL



T-SHIRT

A versatile essential designed for optimum movement, style and comfort; whatever the activity.

FIT ATHLETIC
FABRIC SMOOTH INTERLOCK - **CUT & SEW OR SUBLIMATED**
 COTTON 185GM - **CUT & SEW**



POLO SHIRT

Creating a complete team image, lightweight and classic in style - a traditional addition to any leisure range.

FIT ATHLETIC
FABRIC DIAMOND POLY - **CUT & SEW OR SUBLIMATED**
 COTTON 220GM - **CUT & SEW**



VEST

Designed to maintain comfort and breathability whilst performing, allowing you to move freely during every exercise.

FIT ATHLETIC
FABRIC DIAMOND POLY - **CUT & SEW OR SUBLIMATED**
 SMOOTH INTERLOCK - **CUT & SEW OR SUBLIMATED**

MULTISPORT SHORT

Providing support and freedom of movement during every exercise whilst maintaining performance levels.

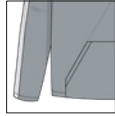
FIT 5" INSEAM
FABRIC DIAMOND POLY - **CUT & SEW OR SUBLIMATED**
 SMOOTH INTERLOCK - **CUT & SEW OR SUBLIMATED**
 TASLON POLY - **CUT & SEW**
 BRUSHED FLEECE - **CUT & SEW**



HEM



RIBBED
(STANDARD FOR
BRUSHED FLEECE)



TURNED UP
(STANDARD FOR
MATT POLY FLEECE)

HOODIE

Built for a relaxed look, with supreme softness and optimum comfort - perfect for leisure and casual wear.

FIT / FABRIC **REGULAR** / BRUSHED FLEECE - **CUT & SEW**
ATHLETIC / MATT POLY FLEECE - **CUT & SEW** OR **SUBLIMATED**

POCKETS **POUCH** OR **SIDE SEAM**



HEM



TURNED UP
(STANDARD FOR
MATT POLY FLEECE)



RIBBED
(STANDARD FOR
BRUSHED FLEECE)

SWEATER

Designed with leisure in mind, this sweater combines a laid-back look with premium fleece fabric for maximum comfort and style.

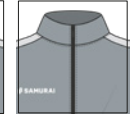
FIT / FABRIC **REGULAR** / BRUSHED FLEECE - **CUT & SEW**
ATHLETIC / MATT POLY FLEECE - **CUT & SEW** OR **SUBLIMATED**



ZIP OPTIONS



1/4 ZIP



FULL ZIP

PULLOVER

A favourite among teams, ensuring players are warm and match ready - the ideal mid-layer.

FIT **ATHLETIC**

FABRIC **MATT POLY FLEECE - CUT & SEW** OR **SUBLIMATED**

POCKETS



TURNED
OPEN



SIDE SEAM
ZIPPED



COLLAR

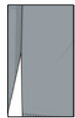


FULL ZIP



1/4 ZIP

POCKETS



NONE



ZIPPED

TRACKTOP

Ideal for both pitch-side and leisure, the ultimate combination of performance and leisure. Pair with the leisure Track Pant for a complete tracksuit.

FIT **ATHLETIC**

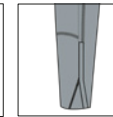
FABRIC **SMOOTH NYLON - CUT & SEW** OR **PART SUBLIMATED**
TASLON POLY - CUT & SEW OR **PART SUBLIMATED**
MICROLIGHT RIPSTOP - CUT & SEW OR **PART SUBLIMATED**



LEG LENGTH

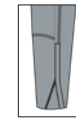


REGULAR



LONG

SIDE LEG ZIP



12"

TAPERED TRACK PANT

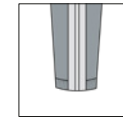
Designed and constructed with a modern style tapered fit, ideal for everyday leisure or training.

FIT **TAPERED**

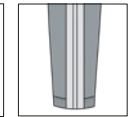
FABRIC **MATT POLY FLEECE - CUT & SEW** OR **PART SUBLIMATED**
LIGHTWEIGHT MATT POLY FLEECE - CUT & SEW OR **PART SUBLIMATED**



LEG LENGTH

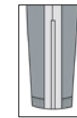


REGULAR

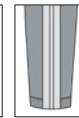


LONG

SIDE LEG ZIP



12"



23"

TRACK PANT

Allowing enhanced movement and agility without compromising on comfort. For the ultimate tracksuit, couple with the leisure Track Top.

FIT **ATHLETIC**

FABRIC **SMOOTH NYLON - CUT & SEW** OR **PART SUBLIMATED**
TASLON POLY - CUT & SEW OR **PART SUBLIMATED**
MICROLIGHT RIPSTOP - CUT & SEW OR **PART SUBLIMATED**
BRUSHED FLEECE - CUT & SEW



T-SHIRT



POLO



VEST



SWEATER



HOODIE



MULTISPORT SHORT



PULLOVER



TRACKTOP

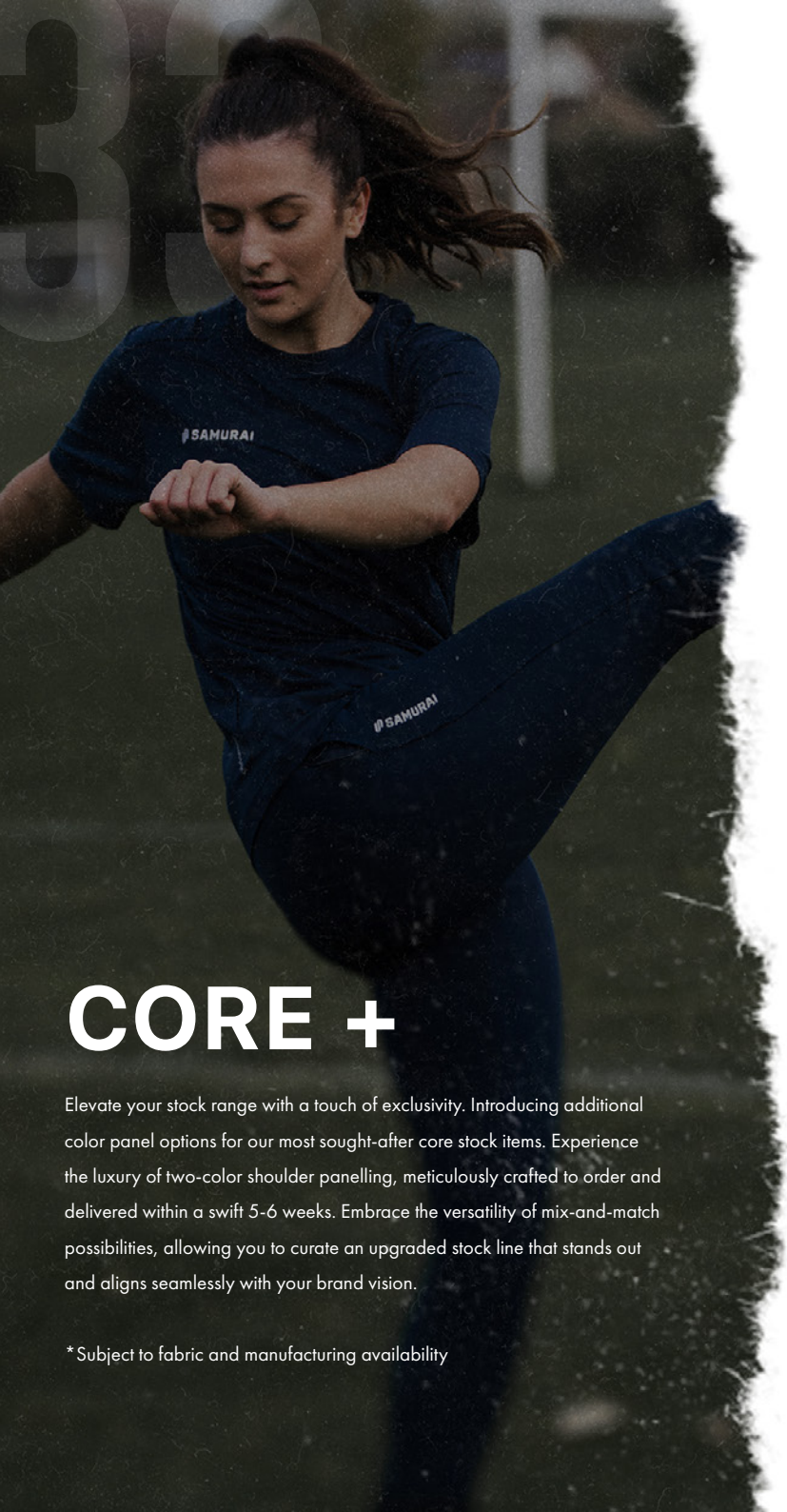


TAPERED TRACK PANT



TRACK PANT





CORE +

Elevate your stock range with a touch of exclusivity. Introducing additional color panel options for our most sought-after core stock items. Experience the luxury of two-color shoulder panelling, meticulously crafted to order and delivered within a swift 5-6 weeks. Embrace the versatility of mix-and-match possibilities, allowing you to curate an upgraded stock line that stands out and aligns seamlessly with your brand vision.

*Subject to fabric and manufacturing availability

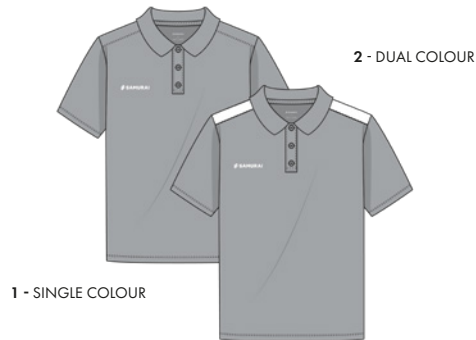


PERFORMANCE TEE

With maximum wicking functionality and designed to be breathable, our EP Tee is built for optimum movement. Keeping you at your peak performance level.

FABRIC	SMOOTH INTERLOCK
FIT	UNISEX - ATHLETIC FIT
STYLE	SINGLE OR DUAL COLOUR
SIZES	YOUTH: XS - S - M - L SENIOR: XXS - XS - S - M - L - XL - 2XL - 3XL

COLOUR AVAILABILITY (BASE & PANELS)



PERFORMANCE POLO

Built with a moisture management system, this polo wicks sweat away from the Skin keeping you cool and dry. Lightweight and anti-bacterial resistant and designed in an athletic fit block.

FABRIC	SMOOTH INTERLOCK
FIT	UNISEX - ATHLETIC FIT
STYLE	SINGLE OR DUAL COLOUR
SIZES	YOUTH: XS - S - M - L SENIOR: XXS - XS - S - M - L - XL - 2XL - 3XL

COLOUR AVAILABILITY (BASE & PANELS)





1 - SINGLE COLOUR

2 - DUAL COLOUR

CLASSIC VEST

Breathable and lightweight in design, our Tech Vest is built with functionality in mind. Featuring our iconic Performex™ moisture management system.

FABRIC	DIAMOND POLYESTER
FIT	UNISEX - ATHLETIC FIT
STYLE	SINGLE OR DUAL COLOUR
SIZES	YOUTH: XS - S - M - L SENIOR: XXS - XS - S - M - L - XL - 2XL - 3XL

COLOUR AVAILABILITY (BASE & PANELS)



1 - SINGLE COLOUR



2 - DUAL COLOUR

CLASSIC HOODIE

Timeless in design, built for a relaxed look. Featuring our cotton-rich fleece with a kangaroo pouch pocket and ribbed cuffs.

FABRIC	BRUSHED FLEECE
FIT	UNISEX - REGULAR FIT
STYLE	SINGLE OR DUAL COLOUR
SIZES	YOUTH: XS - S - M - L SENIOR: XXS - XS - S - M - L - XL - 2XL - 3XL

COLOUR AVAILABILITY (BASE & PANELS)



1 - SINGLE COLOUR



2 - DUAL COLOUR

QUARTER ZIP PULLOVER

The ideal mid-layer, remastered from our popular Quarter Zip Pullover. Built and designed to be breathable using our exclusive Performex fabric properties.

FABRIC	LIGHTWEIGHT MATT POLY FLEECE
FIT	UNISEX - ATHLETIC FIT
STYLE	SINGLE OR DUAL COLOUR
SIZES	YOUTH: XS - S - M - L SENIOR: XXS - XS - S - M - L - XL - 2XL - 3XL

COLOUR AVAILABILITY - BASE



COLOUR AVAILABILITY - PANELLING



1 - SINGLE COLOUR



2 - DUAL COLOUR

MULTISPORT SHORT

Built with our high tensile strength Woven Polyester fabric with Waffle-Knit panels and inserts for ease and freedom of movement. 5" inseam as standard with slider pockets.

FABRIC	WOVEN POLYESTER WITH WAFFLE-KNIT PANELS
FIT	UNISEX - REGULAR FIT
STYLE	SINGLE OR DUAL COLOUR
SIZES	YOUTH: XS - S - M - L SENIOR: XXS - XS - S - M - L - XL - 2XL - 3XL - 4XL

COLOUR AVAILABILITY - BASE



COLOUR AVAILABILITY - PANELLING



NAVIGATOR JACKET

CORNISH PIRATES



AZURA JACKET

A complete water repellent jacket - designed to protect from the elements. Created with a drop tail hem for extra coverage and breathable underarm panelling offering both function and comfort when needed most.

FIT	ATHLETIC
TYPE	CUT & SEW
FABRIC	TASLAN NYLON OR SMOOTH WOVEN



Additional colours available for trim and piping



SOFTSHELL JACKET

Manufactured in our water-repellent and windproof fabric providing both function and comfort - the ideal jacket to protect from the elements all year round.

FIT	REGULAR
TYPE	CUT & SEW
FABRIC	PU COATED BONDED SOFT SHELL



Additional colours available for trim and piping



NAVIGATOR JACKET

Manufactured in our water repellent Smooth Nylon fabric with 6oz wadding to provide full coverage. Featuring a full hood and a drop tail hem.

FIT	REGULAR
TYPE	CUT & SEW
FABRIC	SMOOTH WOVEN



BLIZZARD JACKET

Designed in a throw-back retro look offering multiple colour combinations adapting to fit your style. Constructed with light wadding for additional warmth and comfort.

FIT	ATHLETIC
TYPE	CUT & SEW
FABRIC	PU COATED TASLAN NYLON



Additional colours available for trim and piping

SIZE RANGE

MENS: XXS - XS - S - M - L - XL - 2XL - 3XL - 4XL - 5XL
 JNR BOYS: JM - JL - YXS - YS - YM - YL
 WOMENS: XXS - XS - S - M - L - XL - 2XL - 3XL - 4XL
 JNR GIRLS: JM - JL - YXS - YS - YM - YL

BESPOKE BOBBLE HAT

CORNISH PIRATES



BOBBLE HATS, CAPS AND OTHER HATS

We can offer you a huge variety of hats from caps, bucket hats and many more. Along with our huge choice of head wear comes an unmatched range of customisable features from colours, to logo application methods and additional accessories.

FIT	UNISEX
FABRIC	DEPENDANT ON INDIVIDUAL PRODUCT
SIZES	ONE SIZE



FIXED STRIPE



STRIPES



SOLID COLOUR



HARLEQUIN

TRADITIONAL JERSEYS

Wear your colours with pride with a vintage style rugby shirt. Inspired by traditional styles, these shirts are engineered in our heavy-weight cotton blend jersey and designed to bring a contemporary take on the unforgettable styles from an iconic era of rugby.

FIT	UNISEX - REGULAR FIT
FABRIC	IKEDA
COLLARS	STANDARD OR ROUND
SIZES	YOUTH: XS - S - M - L SENIOR: XXS - XS - S - M - L - XL - 2XL - 3XL - 4XL

UNIFORMS



LEISUREWEAR // ADDITIONAL

SAMURAI Core brings you two exclusive ranges, Elite Performance and Utility, comprising brand new premium products and updates of some of our old favourites - all designed and manufactured in our exclusive fabrics to keep you at your peak performance level.

SAMURAI-SPORTS.COM

 SAMURAI

SAMURAI

 **SAM**

CORE STOCK

TEES & SHORTS

TOPS

BOTTOMS

JACKETS

WOMENS

BAGS

ACCESSORIES

RUGBY BALLS



PERFORMANCE TEE

With maximum wicking functionality and designed to be breathable, our Elite Performance Tee is built for optimum movement. Keeping you at your peak performance level.

FABRIC	SMOOTH INTERLOCK
FIT	MENS - ATHLETIC FIT
SIZES	YOUTH: XS - S - M - L SENIOR: XXS - XS - S - M - L - XL - 2XL - 3XL
COLOURS	ONYX BLACK , PURE WHITE & OXFORD NAVY



PERFORMANCE POLO

Built with a moisture management system, this polo wicks sweat away from the skin keeping you cool and dry. Lightweight and anti-bacterial resistant and designed in an athletic fit block.

FABRIC	DIAMOND POLYESTER
FIT	UNISEX - ATHLETIC FIT
SIZES	YOUTH: XS - S - M - L SENIOR: XXS - XS - S - M - L - XL - 2XL - 3XL
COLOURS	ONYX BLACK & OXFORD NAVY



PIQUE POLO

Athletic fitting and featuring a ribbed collar and cuff detail. A

FABRIC	PIQUE KNIT COTTON
FIT	MENS - ATHLETIC FIT
SIZES	YOUTH: XS - S - M - L SENIOR: XXS - XS - S - M - L - XL - 2XL - 3XL
COLOURS	ONYX BLACK, OXFORD NAVY & PURE WHITE



RUGBY SHORT

Developed to bring the best rugby shorts on the market and built from our high tensile strength Polyester Drill fabric for guaranteed durability. Featuring an added stretch side and gusset panels for maximum movement.

FABRIC	POLYESTER DRILL WITH KUSARO PRO PANELS
FIT	UNISEX - REGULAR FIT
SIZES	YOUTH: XS - S - M - L SENIOR: XXS - XS - S - M - L - XL - 2XL - 3XL - 4XL
COLOURS	ONYX BLACK, PURE WHITE, OXFORD NAVY



CLIPPER SHORT

Built with our high tensile strength Woven Polyester fabric with Waffle-Knit panels and inserts for ease and freedom of movement. 5" inseam as standard with slider pockets.

FABRIC	WOVEN POLYESTER WITH WAFFLE-KNIT PANELS
FIT	MENS - REGULAR FIT
SIZES	YOUTH: XS - S - M - L SENIOR: XXS - XS - S - M - L - XL - 2XL - 3XL - 4XL
COLOURS	ONYX BLACK & OXFORD NAVY



WINDBREAKER

Built from our durable PU fabric, this Wind Breaker is hard-wearing and water resistant, protecting you from the elements. With a mesh lining and stretch underarm panels for maximum mobility. An updated look at our Narita Smock Top.

FABRIC	SMOOTH POLYESTER
FIT	UNISEX - REGULAR FIT
SIZES	YOUTH: XS - S - M - L SENIOR: XXS - XS - S - M - L - XL - 2XL - 3XL
COLOURS	ONYX BLACK & OXFORD NAVY



SHIELD TRAINING TOP

An ideal accompaniment for wet or cold outdoor training, this top is constructed with a fleece lining for additional warmth and comfort. Full contact top.

FABRIC	BONDED SOFT SHELL
FIT	UNISEX - ATHLETIC FIT
SIZES	YOUTH: XS - S - M - L SENIOR: XXS - XS - S - M - L - XL - 2XL - 3XL
COLOURS	ONYX BLACK & OXFORD NAVY



CLASSIC HOODIE

Timeless in design, built for a relaxed look. Featuring our cotton-rich fleece with a kangaroo pouch pocket and ribbed cuffs.

FABRIC	BRUSHED FLEECE
FIT	UNISEX - REGULAR FIT
SIZES	YOUTH: XS - S - M - L SENIOR: XXS - XS - S - M - L - XL - 2XL - 3XL
COLOURS	ONYX BLACK & OXFORD NAVY



TECH ZIP HOODIE

Built in our Matt Poly Fleece fabric, our Tech Zip Hoodie offers optimum comfort. Minimal in design, giving this full zip hoodie an effortless and professional look. With concealed side zip pockets.

FABRIC	LIGHT WEIGHT MATT POLY FLEECE
FIT	UNISEX - ATHLETIC FIT
SIZES	YOUTH: XS - S - M - L SENIOR: XXS - XS - S - M - L - XL - 2XL - 3XL
COLOURS	ONYX BLACK & OXFORD NAVY



QUARTER ZIP PULLOVER

The ideal mid-layer, remastered from our popular Quarter Zip Pullover. Built and designed to be breathable using our exclusive Performex fabric properties.

FABRIC	LIGHTWEIGHT MATT POLY FLEECE
FIT	UNISEX - ATHLETIC FIT (BLOCK 2.0)
SIZES	YOUTH: XS - S - M - L SENIOR: XXS - XS - S - M - L - XL - 2XL - 3XL
COLOURS	ONYX BLACK & OXFORD NAVY



ACTIVE PANT

Combining aspects from our two most popular products to create pants built for comfort and outdoor training. With an inner comfort waistband, soft-feel mesh lining and a fully elasticated hem for a secure fit around the ankle.

- FABRIC** MICROLIGHT RIPSTOP
- FIT** UNISEX - ATHLETIC FIT
- SIZES** YOUTH: XS - S - M - L SENIOR: XXS - XS - S - M - L - XL - 2XL - 3XL
- COLOURS** ONYX BLACK & OXFORD NAVY



TAPERED TRAINING PANT

Built with a modern tapered fit, designed for everyday leisure or training. Perfectly fitted for comfort and a full range of movement with a soft ribbed back calf panel.

- FABRIC** LIGHTWEIGHT MATT POLY FLEECE
- FIT** UNISEX - ATHLETIC FIT
- SIZES** YOUTH: XS - S - M - L SENIOR: XXS - XS - S - M - L - XL - 2XL - 3XL
- COLOURS** ONYX BLACK & OXFORD NAVY



QUARTER ZIP PULLOVER

PAGE 39

TAPERED TRAINING PANT

ONYX BLACK

CORE STOCK // BOTTOMS



GILET

Built for warmth and protection, without compromising on movement. Featuring a chevron stitching detail in a lightweight showerproof nylon with cruelty-free synthetic down-effect wadding.

FABRIC	NYLON / SYNTHETIC WADDING
FIT	UNISEX - ATHLETIC FIT
SIZES	YOUTH: XS - S - M - L SENIOR: XXS - XS - S - M - L - XL - 2XL - 3XL
COLOURS	ONYX BLACK & OXFORD NAVY



LIGHTWEIGHT JACKET

Built with our exclusive PU Laminated Woven Polyester showerproof fabric, our Shell Jacket offers both function and comfort whilst protecting you from the elements. Mesh lined with zippered pockets and a reflective tape feature.

FABRIC	WOVEN POLYESTER
FIT	UNISEX - ATHLETIC FIT
SIZES	YOUTH: XS - S - M - L SENIOR: XXS - XS - S - M - L - XL - 2XL - 3XL
COLOURS	ONYX BLACK & OXFORD NAVY



NAVIGATOR JACKET

Manufactured in our water repellent Smooth Woven fabric with 6oz wadding to provide full coverage. Featuring a full hood and a drop tail hem.

FABRIC	SMOOTH WOVEN
FIT	UNISEX - REGULAR FIT
SIZES	YOUTH: XS - S - M - L SENIOR: XXS - XS - S - M - L - XL - 2XL - 3XL
COLOURS	ONYX BLACK & OXFORD NAVY



LONGLINE PUFFER

Built with Polyester showerproof outer deep wadding and featuring chevron stitching detail for superior warmth and insulation. This calf length puffer also offers storm cuffs and hood.

FABRIC	SMOOTH WOVEN / SYNTHETIC WADDING
FIT	UNISEX - ATHLETIC FIT
SIZES	YOUTH: XS - S - M - L SENIOR: XXS - XS - S - M - L - XL - 2XL - 3XL
COLOURS	ONYX BLACK & OXFORD NAVY



SUB COAT

Designed as the ultimate side-line coat with a deep pile fleece lining to ensure players are warm and match ready. Featuring deep side pockets, vented back hem and a chunky, quick release zip.

FABRIC	PU COATED TASLAN NYLON WITH DEEP - PILE FLEECE LINING
FIT	UNISEX - OVERSIZED FIT
SIZES	S = (YOUTH: S - M - L) M = (SENIOR: XS - S - M) L = (SENIOR: L - XL - 2XL)
COLOURS	ONYX BLACK, BLAZE RED & OXFORD NAVY



NEW FOR 2024/25

WOMENS VEST

With maximum wicking functionality and designed to be breathable, our Women's vest is built for optimum movement. Keeping you at your peak performance level. A modernised Performance Vest.

FABRIC	DIAMOND POLYESTER
FIT	WOMENS FIT
SIZES	YOUTH: XS - S - M - L SENIOR: XXS - XS - S - M - L - XL - 2XL - 3XL
COLOURS	ONYX BLACK & OXFORD NAVY



NEW FOR 2024/25

WOMENS RUGBY SHORT

The specialist womens short option, designed with an integral gum shield pocket and developed with expert flex-fit panelling for unrestricted movement and optimum support.

FABRIC	POLYESTER DRILL WITH STRETCH PANEL
FIT	WOMENS FIT
SIZES	YOUTH: XS - S - M - L SENIOR: XXS - XS - S - M - L - XL - 2XL - 3XL
COLOURS	ONYX BLACK & OXFORD NAVY



NEW FOR 2024/25

WOMENS TEE

With maximum wicking functionality and designed to be breathable, our Women's Tee is built for optimum movement. Keeping you at your peak performance level. A modernised Performance Tee.

FABRIC	SMOOTH INTERLOCK
FIT	WOMENS FIT
SIZES	YOUTH: XS - S - M - L SENIOR: XXS - XS - S - M - L - XL - 2XL - 3XL
COLOURS	ONYX BLACK & OXFORD NAVY



WOMENS TAPERED TRACK PANT

Built for women, these training pants have a slightly slimmer fit than our unisex equivalent, with a moderately higher waistband and a neater rise around the hips for a more flattering fit. Featuring a tapered leg with soft ribbed back calf panels.

FABRIC	LIGHTWEIGHT MATT POLY FLEECE
FIT	WOMENS FIT
SIZES	YOUTH: XS - S - M - L SENIOR: XXS - XS - S - M - L - XL - 2XL - 3XL
COLOURS	ONYX BLACK & OXFORD NAVY



WOMENS PIQUE POLO

A traditional polo design with a fitted waist for a more feminine fit. Featuring a ribbed collar and cuff detail. A modernised Lifestyle Polo.

FABRIC	PIQUE KNIT COTTON
FIT	WOMENS FIT
SIZES	YOUTH: XS - S - M - L SENIOR: XXS - XS - S - M - L - XL - 2XL - 3XL
COLOURS	ONYX BLACK, PURE WHITE & OXFORD NAVY



LEGGINGS

Built for elite performance, these high power stretch leggings offer a full contoured fit and security. Featuring side pockets and contoured flat seaming.

FABRIC	POLYESTER ELASTANE
FIT	WOMENS FIT
SIZES	YOUTH: XS - S - M - L SENIOR: XXS - XS - S - M - L - XL - 2XL - 3XL
COLOURS	ONYX BLACK & OXFORD NAVY



ADD YOUR LOGO

BACKPACK

An all-purpose backpack for everyday use. With a functional heavy duty handle and airflow vent section on the back. Featuring internal and external pockets for additional storage.

FABRIC: HEAVYWEIGHT POLYESTER
SIZE: 48 X 34 X 20CM
COLOURS: ONYX BLACK & OXFORD NAVY



GYM BAG

A classic lightweight multi-purpose shoulder bag - optimal for gym or leisure use. With drawstring straps, a sleek side zip compartment and internal pocket.

FABRIC: POLYESTER
SIZE: 36.5 X 50CM
COLOURS: ONYX BLACK



BOOT BAG

Engineered with a wipe clean interior and outer. Including breathable mesh inserts to ensure good air flow and to keep your kit stay fresh for longer. With external zip pockets and an easily accessible top flap.

FABRIC: HEAVYWEIGHT POLYESTER
SIZES: 36 X 17 X 21CM
COLOUR: ONYX BLACK



MATCHDAY BAG

An elite heavyweight bag - the ideal size for a personal kit bag. With four external zipped pockets, an internal trinket pocket, padded handle and optional shoulder strap.

FABRIC: HEAVYWEIGHT POLYESTER
SIZES: 66 X 36 X 30CM
COLOUR: ONYX BLACK & OXFORD NAVY



TOURIST BAG

Made with multiple pockets and sections to keep your items separate, safe and secure. Ideal for travel with a retractable pull handle on one end and two wheels. With a removable wet compartment, external zip pockets and zip support buckles.

FABRIC: HEAVYWEIGHT POLYESTER
SIZE: 70 X 37 X 36CM
COLOUR: ONYX BLACK



WEEKEND BAG

Ideal for cabin luggage with a retractable handle, side carry handle and wheels for easier transport and travel.

FABRIC: POLYESTER
SIZE: 53 X 20 X 33.5CM
COLOUR: ONYX BLACK



BEANIE

Our soft knitted beanie features a fold up cuff and a full fleece lining. Built for training and off-field wear. A remastered Winter Bronx hat.

FABRIC	ACRYLIC KNIT
FIT	UNISEX
SIZES	ONE SIZE
COLOURS	ONYX BLACK & OXFORD NAVY



BOBBLE HAT

Our soft knitted beanie features a fold up cuff and a full fleece lining. Built for training and off-field wear. A remastered Winter Bronx hat.

FABRIC	ACRYLIC KNIT
FIT	UNISEX
SIZES	ONE SIZE
COLOURS	ONYX BLACK & OXFORD NAVY



WATER BOTTLE

Featuring a durable rubber stop cap and a liquid capacity of up to 800ml.

MATERIAL:	PLASTIC
SIZE:	800 ML
COLOUR:	ONYX BLACK



ANKLE SOCK

Suitable for any occasion, comfortable and durable - from the most intense gym session to everyday life. Cotton Comfort Foot - a soft padded sole which provides you with enhanced comfort and control.

FABRIC:	ORGANIC COTTON
FIT:	UNISEX
SIZE:	M: 3-6 / L: 7-11 / XL: 12-14
COLOUR:	PURE WHITE



EURO PREMIER SOCK

A traditional rugby sock; these pair with any kit. Built with our Cotton Comfort Foot - a soft padded sole providing enhanced comfort and control. With an extra strength ribbed elasticated turnover at the knee.

FABRIC:	TRADITIONAL 75% NYLON / 25% COTTON FABRIC
FIT:	UNISEX
SIZES:	M: 3-6 / L: 7-11 / XL: 12-14
COLOURS:	ROYAL/RED/BOTTLE/SKY/NAVY/BLACK & MAROON



REVERSIBLE TRAINING BIB

A professional reversible training vest, created with soft feel binding to ensure maximum comfort whilst training.

FABRIC	HEAVYWEIGHT EYELET POLYESTER
FIT	UNISEX - REGULAR FIT
SIZES	S - M - L
COLOURS	ROYAL/RED & YELLOW/GREEN



NEXT GEN ELITEX BALL

Raise your game this season by taking to the field with the Next Gen Elitex Match Ball. Reshaped, using special rubber compound technology, our world-class, high grade ball comes with four lining and specially modified air retention bladders and fully conforms to IRB regulations.

- MATERIAL:** SPECIFICALLY ENGINEERED POLY/COTTON
- SIZE:** SIZE 5
- COLOUR:** GREEN/BLUE



CLUB MATCH BALL

This superior Club Match Ball is an ideal choice for amateur and professional players alike. With A-Grade natural high-grip outer finish and excellent shape guarantee, this ball is rigorously tested to guarantee our true flight technology. Complies with England Rugby Regulation 15 On Ball Sizes: Size 3 (Under 7, 8 & 9); Size 4 (Under 10, 11, 12, 13 & 14); Size 5 (Under 15 & above).

- MATERIAL:** SYNTHETIC RUBBER AND LEATHER COMPOUND
- SIZE:** SIZE 3, 4 & 5
- COLOUR:** YELLOW / RED



TRAINER BALL

This All Element Trainer Ball is the ideal basic training ball for all ages and abilities. Made from combination rubber hi-grip outer 3 ply combo lamination and rigorously tested to ensure high quality performance and durability during all conditions. With an Enkay latex bladder and stitched with polyester thread, this ball is perfect to help you get match ready.

- MATERIAL:** SYNTHETIC RUBBER AND LEATHER COMPOUND
- SIZE:** SIZE 3, 4 & 5
- COLOUR:** PURPLE / BLUE

LIGHTWEIGHT JACKET

PAGE 40

 SAMURAI

RUGBY SHORT

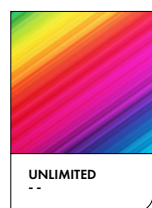
PAGE 37



CUT & SEW COLOUR STOCK OPTIONS

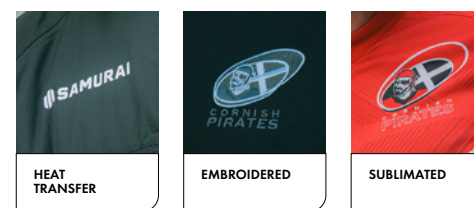
With an extensive collection of fabrics that boast superior performance functionalities, our cut & sew fabrics are available in a wide selection of colours* to help you find the right fit for you.

*Fabric and colour options subject to availability.



SUBLIMATED COLOUR OPTIONS

Unlimited colours* to create infinite designs - sublimated colours are matched to Pantone Solid Coated; giving a wider range than the standard CMYK options to offer more creative freedom.



EMBELLISHMENTS

It's not a complete kit without your club crest. We offer a range of different options to best display your team's logos - from striking heat transfers to premium complex embroideries - find a finish that works best for you.

COMPETITION FIT

A full body contouring jersey with curved droptail hem & sculpted sleeves. This Jersey is skin tight and used by Leicester Tigers, Exeter Chiefs and other Elite teams.

ATHLETIC FIT

A more streamlined fitting silhouette. Designed to be tighter fitting for a more athletic physique.

REGULAR FIT

A more relaxed, looser fitting silhouette. Not tailored to a specific body shape.

UNISEX (VAT Applicable)

	XXS	XS	S	M	L	XL	2XL	3XL	4XL	5XL
To fit chest (inches)	36"	38"	40"	42"	44"	46"	48"	50"	52"	54"
To fit waist (inches)	29"	30"	32"	34"	36"	38"	40"	42"	44"	46"
To fit chest (cms)	87	92	102	107	112	117	122	127	132	137
To fit waist (cms)	74	76	82	87	92	97	102	107	112	117

WOMEN (VAT Applicable)

	XXS	XS	S	M	L	XL	2XL	3XL	4XL
To fit chest (inches)	30"	32"	34"	36"	38"	40"	42"	44"	46"
To fit waist (inches)	24"	25"	26"	28"	30"	32"	34"	36"	38"
To fit chest (cms)	76	82	87	92	97	102	107	112	117
To fit waist (cms)	61	64	66	71	76	82	87	92	97

CHILDREN

	JUNIOR				YOUTH			
	XS	S	M	L	XS	S	M	L
To fit chest (inches)	19"	21"	23"	25"	27"	29"	31"	33"
To fit waist (inches)	18"	20"	22"	23"	24"	25"	27"	28"
To fit chest (cms)	49	54	59	64	69	74	79	84
To fit waist (cms)	46	51	56	59	61	64	69	71



E: INFO@SAMURAI-SPORTS.COM

T: 01508 531010

W: SAMURAI-SPORTS.COM

NORFOLK HQ:

GF2 ROXBURGH HOUSE
ROSEBERY BUSINESS PARK
NORWICH
NR14 7XP

LONDON HQ:

UNIT 203 CREMER BUSINESS CENTRE
37 CREMER STREET
LONDON,
E2 8HD