



# SAMURAI

 SAMURAI

Choosing one of our premium leisurewear ranges is just the beginning. Each theme can be expanded upon to create a truly unique design. Choose between our cut & sew, part-sublimated and fully sublimated options for a leisurewear range that is perfectly suited to you.



CUT AND SEW

Constructed from separate panels sewn together, the cut and sew option allows you to create a leisurewear range perfectly suited to your needs; offering multiple piping, taping and stitching details and the chance to combine different fabrics to create a contrast of textures.

KEY FEATURES

Stock fabrics  
Contrasting panels



ONYX BLACK    BLAZE RED    PURE WHITE



PART SUBLIMATED

The best of both, part-sublimated items combine our exclusive leisurewear themes with endless colour and pattern possibilities. With the ability to contrast different textured fabrics, this option takes our leisurewear ranges one step further.

KEY FEATURES

Your colours  
Your pattern  
Contrasting fabrics



ONYX BLACK    PURE WHITE    SUBLIMATED



FULLY SUBLIMATED

The premium option that offers complete creative freedom - fully sublimated items have infinite design possibilities. Created through the sublimation process of printing directly onto a fabric; this technique gives you an unlimited amount of colour and pattern options to create a truly unique design. Your imagination is the limit.

KEY FEATURES

Your colours  
Your pattern  
Full body sublimated pattern  
Unlimited Logo and Sponsors



SUBLIMATED



NEW FOR 2024/25

# VALOR

Unleash the power of distinction and a manifestation of precision and style. Elevate your presence on the field with contrasting panels and angular finishes that deliver a dynamic aesthetic. Valor is a bold statement of excellence inspired by the spirit of rugby.

SIZE RANGE

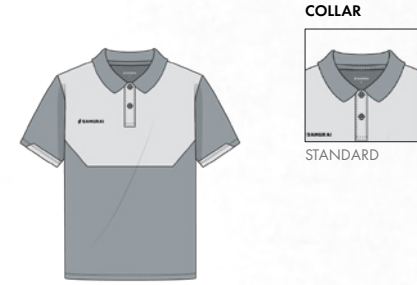
MENS:           XXS - XS - S - M - L - XL - 2XL - 3XL - 4XL - 5XL  
 JNR BOYS:    JM - JL - YXS - YS - YM - YL  
 WOMENS:     XXS - XS - S - M - L - XL - 2XL - 3XL - 4XL  
 JNR GIRLS:   JM - JL - YXS - YS - YM - YL



## T-SHIRT

A versatile essential designed for optimum movement, style and comfort; whatever the activity.

**FIT**                ATHLETIC  
**FABRIC**         SMOOTH INTERLOCK - **CUT & SEW OR SUBLIMATED**  
                           COTTON 185GM - **CUT & SEW**



## POLO SHIRT

Creating a complete team image, lightweight and classic in style - a traditional addition to any leisure range.

**FIT**                ATHLETIC  
**FABRIC**         DIAMOND POLY - **CUT & SEW OR SUBLIMATED**  
                           COTTON 220GM - **CUT & SEW**



## VEST

Designed to maintain comfort and breathability whilst performing, allowing you to move freely during every exercise.

**FIT**                ATHLETIC  
**FABRIC**         DIAMOND POLY - **CUT & SEW OR SUBLIMATED**  
                           SMOOTH INTERLOCK - **CUT & SEW OR SUBLIMATED**

## MULTISPORT SHORT

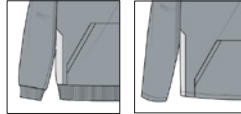
Providing support and freedom of movement during every exercise whilst maintaining performance levels.

**FIT**                5" INSEAM  
**FABRIC**         DIAMOND POLY - **CUT & SEW OR SUBLIMATED**  
                           SMOOTH INTERLOCK - **CUT & SEW OR SUBLIMATED**  
                           TASLON POLY - **CUT & SEW**  
                           BRUSHED FLEECE - **CUT & SEW**





**HEM**



RIBBED (STANDARD FOR BRUSHED FLEECE)    TURNED UP (STANDARD FOR MATT POLY FLEECE)

**HOODIE**

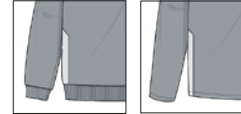
Built for a relaxed look, with supreme softness and optimum comfort - perfect for leisure and casual wear.

**FIT / FABRIC**    **REGULAR / BRUSHED FLEECE - CUT & SEW**  
**ATHLETIC / MATT POLY FLEECE - CUT & SEW OR SUBLIMATED**

**POCKETS**    **POUCH OR SIDE SEAM**



**HEM**



TURNED UP (STANDARD FOR MATT POLY FLEECE)    RIBBED (STANDARD FOR BRUSHED FLEECE)

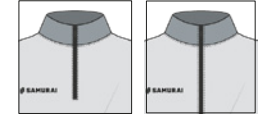
**SWEATER**

Designed with leisure in mind, this sweater combines a laid-back look with premium fleece fabric for maximum comfort and style.

**FIT / FABRIC**    **REGULAR / BRUSHED FLEECE - CUT & SEW**  
**ATHLETIC / MATT POLY FLEECE - CUT & SEW OR SUBLIMATED**

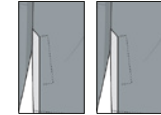


**ZIP OPTIONS**



1/4 ZIP    FULL ZIP

**POCKET**



TURNED OPEN    SIDE SEAM ZIPPED

**PULLOVER**

A favourite among teams, ensuring players are warm and match ready - the ideal mid-layer.

**FIT**    **ATHLETIC**

**FABRIC**    **MATT POLY FLEECE - CUT & SEW OR SUBLIMATED**

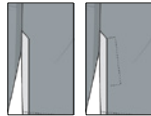


**COLLAR**



FULL ZIP    1/4 ZIP

**POCKETS**



NONE    ZIPPED

**TRACKTOP**

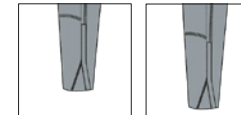
Ideal for both pitch-side and leisure, the ultimate combination of performance and leisure. Pair with the leisure Track Pant for a complete tracksuit.

**FIT**    **ATHLETIC**

**FABRIC**    **SMOOTH NYLON - CUT & SEW OR PART SUBLIMATED**  
**TASLON POLY - CUT & SEW OR PART SUBLIMATED**  
**MICROLIGHT RIPSTOP - CUT & SEW OR PART SUBLIMATED**

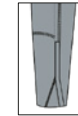


**LEG LENGTH**



REGULAR    LONG

**SIDE LEG ZIP**



12"    23"

**TAPERED TRACK PANT**

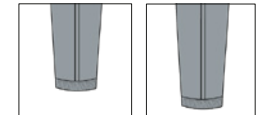
Designed and constructed with a modern style tapered fit, ideal for everyday leisure or training.

**FIT**    **TAPERED**

**FABRIC**    **MATT POLY FLEECE - CUT & SEW OR PART SUBLIMATED**  
**LIGHTWEIGHT MATT POLY FLEECE - CUT & SEW OR PART SUBLIMATED**

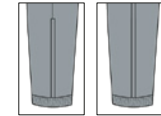


**LEG LENGTH**



REGULAR    LONG

**SIDE LEG ZIP**



12"    23"

**TRACK PANT**

Allowing enhanced movement and agility without compromising on comfort. For the ultimate tracksuit, couple with the leisure Track Top.

**FIT**    **ATHLETIC**

**FABRIC**    **SMOOTH NYLON - CUT & SEW OR PART SUBLIMATED**  
**TASLON POLY - CUT & SEW OR PART SUBLIMATED**  
**MICROLIGHT RIPSTOP - CUT & SEW OR PART SUBLIMATED**  
**BRUSHED FLEECE - CUT & SEW**





T-SHIRT



POLO



VEST



SWEATER



HOODIE



MULTISPORT SHORT



PULLOVER



TRACKTOP



TAPERED TRACK PANT



TRACK PANT



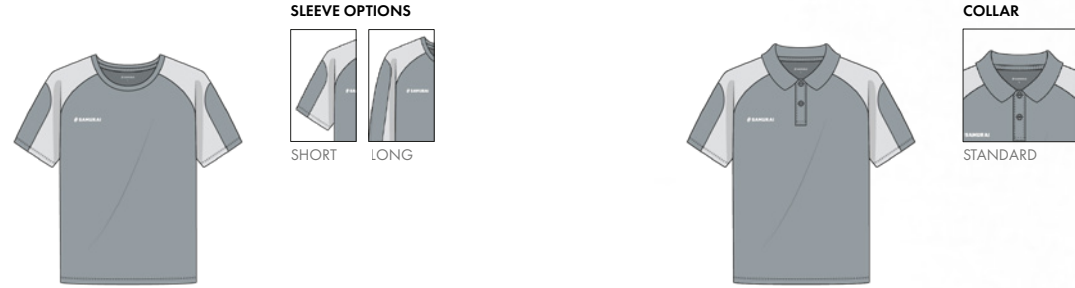


# ENDO

Endo introduces a contemporary vision to leisurewear, blending boldness with modern aesthetics. Discover the allure of block panels that seamlessly come together, creating a striking contrast that defines this collection.

**SIZE RANGE**

MENS:           XXS - XS - S - M - L - XL - 2XL - 3XL - 4XL - 5XL  
 JNR BOYS:    JM - JL - YXS - YS - YM - YL  
 WOMENS:     XXS - XS - S - M - L - XL - 2XL - 3XL - 4XL  
 JNR GIRLS:   JM - JL - YXS - YS - YM - YL



## T-SHIRT

A versatile essential designed for optimum movement, style and comfort; whatever the activity.

**FIT**            ATHLETIC  
**FABRIC**       SMOOTH INTERLOCK - **CUT & SEW OR SUBLIMATED**  
                     COTTON 185GM - **CUT & SEW**

## POLO SHIRT

Creating a complete team image, lightweight and classic in style - a traditional addition to any leisure range.

**FIT**            ATHLETIC  
**FABRIC**       DIAMOND POLY - **CUT & SEW OR SUBLIMATED**  
                     COTTON 220GM - **CUT & SEW**



## VEST

Designed to maintain comfort and breathability whilst performing, allowing you to move freely during every exercise.

**FIT**            ATHLETIC  
**FABRIC**       DIAMOND POLY - **CUT & SEW OR SUBLIMATED**  
                     SMOOTH INTERLOCK - **CUT & SEW OR SUBLIMATED**

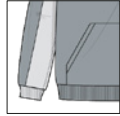
## MULTISPORT SHORT

Providing support and freedom of movement during every exercise whilst maintaining performance levels.

**FIT**            5" INSEAM  
**FABRIC**       DIAMOND POLY - **CUT & SEW OR SUBLIMATED**  
                     SMOOTH INTERLOCK - **CUT & SEW OR SUBLIMATED**  
                     TASLON POLY - **CUT & SEW**  
                     BRUSHED FLEECE - **CUT & SEW**



**HEM**



RIBBED  
(STANDARD FOR  
BRUSHED FLEECE)



TURNED UP  
(STANDARD FOR  
MATT POLY FLEECE)

**HOODIE**

Built for a relaxed look, with supreme softness and optimum comfort - perfect for leisure and casual wear.

**FIT / FABRIC**    **REGULAR** / BRUSHED FLEECE - **CUT & SEW**  
**ATHLETIC** / MATT POLY FLEECE - **CUT & SEW** OR **SUBLIMATED**

**POCKETS**        **POUCH** OR **SIDE SEAM**



**HEM**



TURNED UP  
(STANDARD FOR  
MATT POLY FLEECE)



RIBBED  
(STANDARD FOR  
BRUSHED FLEECE)

**SWEATER**

Designed with leisure in mind, this sweater combines a laid-back look with premium fleece fabric for maximum comfort and style.

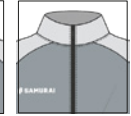
**FIT / FABRIC**    **REGULAR** / BRUSHED FLEECE - **CUT & SEW**  
**ATHLETIC** / MATT POLY FLEECE - **CUT & SEW** OR **SUBLIMATED**



**ZIP OPTIONS**



1/4 ZIP



FULL ZIP

**PULLOVER**

A favourite among teams, ensuring players are warm and match ready - the ideal mid-layer.

**FIT**                **ATHLETIC**

**FABRIC**         **MATT POLY FLEECE - CUT & SEW** OR **SUBLIMATED**

**POCKETS**



TURNED  
OPEN



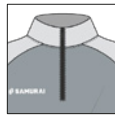
SIDE SEAM  
ZIPPED



**COLLAR**



FULL ZIP



1/4 ZIP

**POCKETS**



NONE



ZIPPED

**TRACKTOP**

Ideal for both pitch-side and leisure, the ultimate combination of performance and leisure. Pair with the leisure Track Pant for a complete tracksuit.

**FIT**                **ATHLETIC**

**FABRIC**         **SMOOTH NYLON - CUT & SEW** OR **PART SUBLIMATED**  
**TASLON POLY - CUT & SEW** OR **PART SUBLIMATED**  
**MICROLIGHT RIPSTOP - CUT & SEW** OR **PART SUBLIMATED**



**LEG LENGTH**

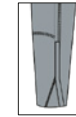


REGULAR



LONG

**SIDE LEG ZIP**



12"

**TAPERED TRACK PANT**

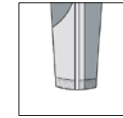
Designed and constructed with a modern style tapered fit, ideal for everyday leisure or training.

**FIT**                **TAPERED**

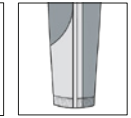
**FABRIC**         **MATT POLY FLEECE - CUT & SEW** OR **PART SUBLIMATED**  
**LIGHTWEIGHT MATT POLY FLEECE - CUT & SEW** OR **PART SUBLIMATED**



**LEG LENGTH**



REGULAR

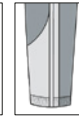


LONG

**SIDE LEG ZIP**



12"



23"

**TRACK PANT**

Allowing enhanced movement and agility without compromising on comfort. For the ultimate tracksuit, couple with the leisure Track Top.

**FIT**                **ATHLETIC**

**FABRIC**         **SMOOTH NYLON - CUT & SEW** OR **PART SUBLIMATED**  
**TASLON POLY - CUT & SEW** OR **PART SUBLIMATED**  
**MICROLIGHT RIPSTOP - CUT & SEW** OR **PART SUBLIMATED**  
**BRUSHED FLEECE - CUT & SEW**





T-SHIRT



POLO



VEST



SWEATER



HOODIE



MULTISPORT SHORT



PULLOVER



TRACKTOP

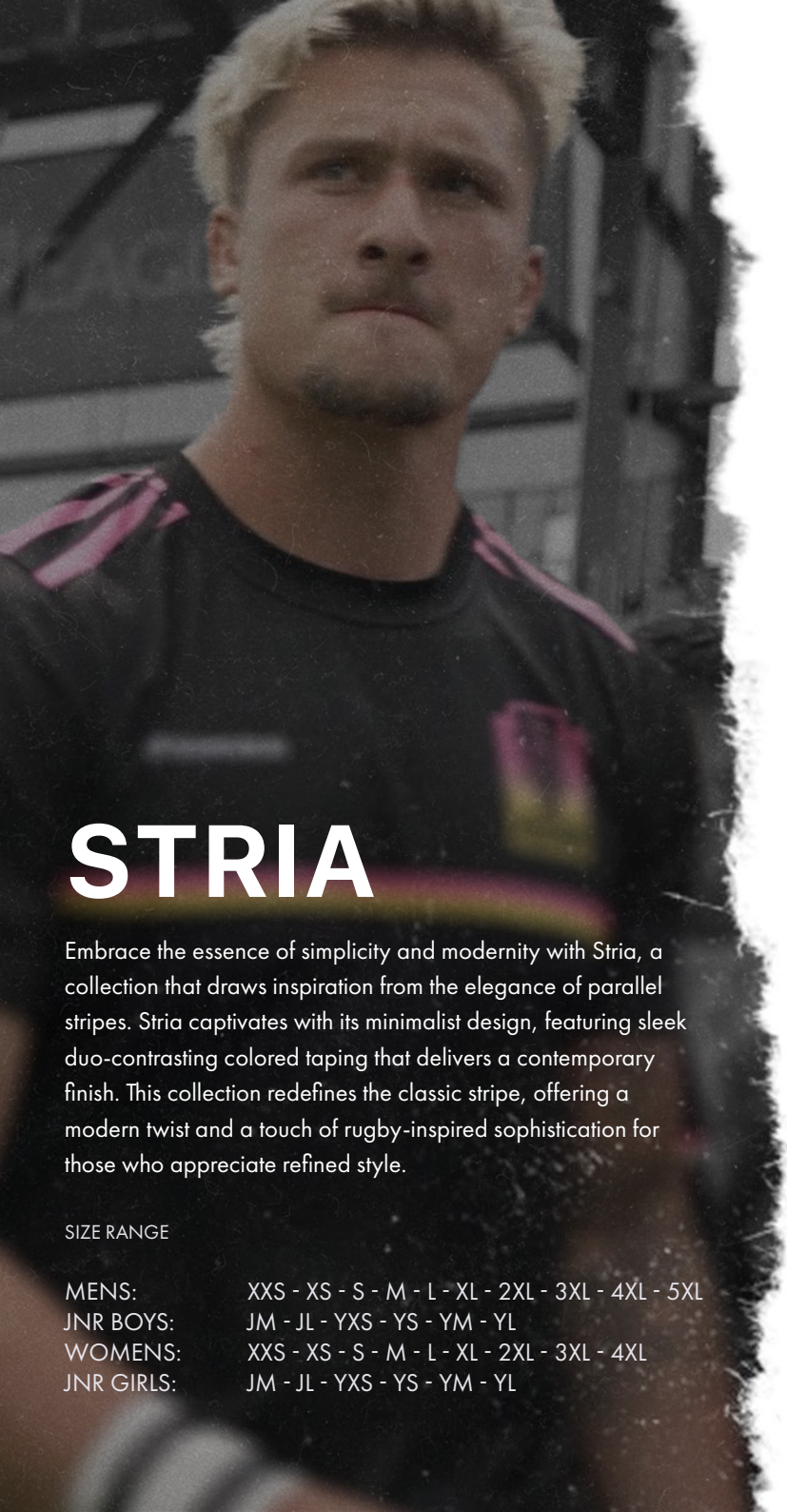


TAPERED TRACK PANT



TRACK PANT



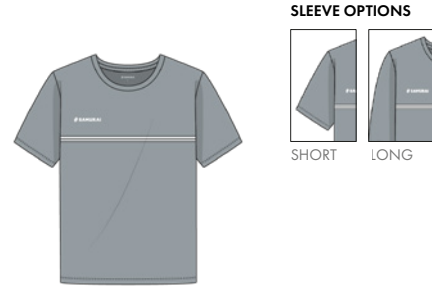


# STRIA

Embrace the essence of simplicity and modernity with Stria, a collection that draws inspiration from the elegance of parallel stripes. Stria captivates with its minimalist design, featuring sleek duo-contrasting colored taping that delivers a contemporary finish. This collection redefines the classic stripe, offering a modern twist and a touch of rugby-inspired sophistication for those who appreciate refined style.

**SIZE RANGE**

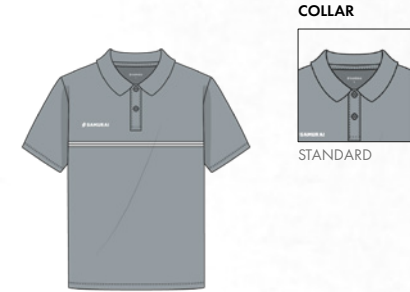
MENS:           XXS - XS - S - M - L - XL - 2XL - 3XL - 4XL - 5XL  
 JNR BOYS:     JM - JL - YXS - YS - YM - YL  
 WOMENS:      XXS - XS - S - M - L - XL - 2XL - 3XL - 4XL  
 JNR GIRLS:    JM - JL - YXS - YS - YM - YL



## T-SHIRT

A versatile essential designed for optimum movement, style and comfort; whatever the activity.

**FIT**            ATHLETIC  
**FABRIC**       SMOOTH INTERLOCK - **CUT & SEW** OR **SUBLIMATED**  
                     COTTON 185GM - **CUT & SEW**



## POLO SHIRT

Creating a complete team image, lightweight and classic in style - a traditional addition to any leisure range.

**FIT**            ATHLETIC  
**FABRIC**       DIAMOND POLY - **CUT & SEW** OR **SUBLIMATED**  
                     COTTON 220GM - **CUT & SEW**



## VEST

Designed to maintain comfort and breathability whilst performing, allowing you to move freely during every exercise.

**FIT**            ATHLETIC  
**FABRIC**       DIAMOND POLY - **CUT & SEW** OR **SUBLIMATED**  
                     SMOOTH INTERLOCK - **CUT & SEW** OR **SUBLIMATED**

## MULTISPORT SHORT

Providing support and freedom of movement during every exercise whilst maintaining performance levels.

**FIT**            5" INSEAM  
**FABRIC**       DIAMOND POLY - **CUT & SEW** OR **SUBLIMATED**  
                     SMOOTH INTERLOCK - **CUT & SEW** OR **SUBLIMATED**  
                     TASLON POLY - **CUT & SEW**  
                     BRUSHED FLEECE - **CUT & SEW**



**HEM**



RIBBED  
(STANDARD FOR  
BRUSHED FLEECE)



TURNED UP  
(STANDARD FOR  
MATT POLY FLEECE)

**HOODIE**

Built for a relaxed look, with supreme softness and optimum comfort - perfect for leisure and casual wear.

**FIT / FABRIC**    **REGULAR / BRUSHED FLEECE - CUT & SEW**  
**ATHLETIC / MATT POLY FLEECE - CUT & SEW OR SUBLIMATED**

**POCKETS**        **POUCH OR SIDE SEAM**



**HEM**



TURNED UP  
(STANDARD FOR  
MATT POLY FLEECE)



RIBBED  
(STANDARD FOR  
BRUSHED FLEECE)

**SWEATER**

Designed with leisure in mind, this sweater combines a laid-back look with premium fleece fabric for maximum comfort and style.

**FIT / FABRIC**    **REGULAR / BRUSHED FLEECE - CUT & SEW**  
**ATHLETIC / MATT POLY FLEECE - CUT & SEW OR SUBLIMATED**



**ZIP OPTIONS**



1/4 ZIP



FULL ZIP

**PULLOVER**

A favourite among teams, ensuring players are warm and match ready - the ideal mid-layer.

**FIT**                **ATHLETIC**

**FABRIC**         **MATT POLY FLEECE - CUT & SEW OR SUBLIMATED**

**POCKETS**



TURNED  
OPEN



SIDE SEAM  
ZIPPED



**COLLAR**



FULL ZIP



1/4 ZIP

**POCKETS**



NONE



ZIPPED

**TRACKTOP**

Ideal for both pitch-side and leisure, the ultimate combination of performance and leisure. Pair with the leisure Track Pant for a complete tracksuit.

**FIT**                **ATHLETIC**

**FABRIC**         **SMOOTH NYLON - CUT & SEW OR PART SUBLIMATED**  
**TASLON POLY - CUT & SEW OR PART SUBLIMATED**  
**MICROLIGHT RIPSTOP - CUT & SEW OR PART SUBLIMATED**



**LEG LENGTH**

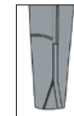


REGULAR



LONG

**SIDE LEG ZIP**



12"

**TAPERED TRACK PANT**

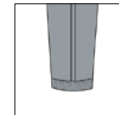
Designed and constructed with a modern style tapered fit, ideal for everyday leisure or training.

**FIT**                **TAPERED**

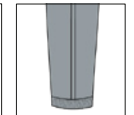
**FABRIC**         **MATT POLY FLEECE - CUT & SEW OR PART SUBLIMATED**  
**LIGHTWEIGHT MATT POLY FLEECE - CUT & SEW OR PART SUBLIMATED**



**LEG LENGTH**



REGULAR

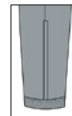


LONG

**SIDE LEG ZIP**



12"



23"

**TRACK PANT**

Allowing enhanced movement and agility without compromising on comfort. For the ultimate tracksuit, couple with the leisure Track Top.

**FIT**                **ATHLETIC**

**FABRIC**         **SMOOTH NYLON - CUT & SEW OR PART SUBLIMATED**  
**TASLON POLY - CUT & SEW OR PART SUBLIMATED**  
**MICROLIGHT RIPSTOP - CUT & SEW OR PART SUBLIMATED**  
**BRUSHED FLEECE - CUT & SEW**





T-SHIRT



POLO



VEST



SWEATER



HOODIE



MULTISPORT SHORT



PULLOVER



TRACKTOP



TAPERED TRACK PANT



TRACK PANT





# EUROPA

Embark on a nostalgic journey with Europa, a true SAMURAI classic that draws inspiration from the vibrant spirit of the 90s. This timeless collection artfully combines contrasting panels and accent piping, resulting in a harmonious fusion of curves and fluid design.

**SIZE RANGE**

MENS:           XXS - XS - S - M - L - XL - 2XL - 3XL - 4XL - 5XL  
 JNR BOYS:   JM - JL - YXS - YS - YM - YL  
 WOMENS:    XXS - XS - S - M - L - XL - 2XL - 3XL - 4XL  
 JNR GIRLS:   JM - JL - YXS - YS - YM - YL



## T-SHIRT

A versatile essential designed for optimum movement, style and comfort; whatever the activity.

**FIT**               ATHLETIC  
**FABRIC**       SMOOTH INTERLOCK - **CUT & SEW** OR **SUBLIMATED**  
                       COTTON 185GM - **CUT & SEW**



## POLO SHIRT

Creating a complete team image, lightweight and classic in style - a traditional addition to any leisure range.

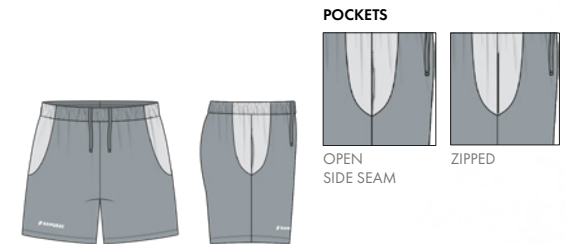
**FIT**               ATHLETIC  
**FABRIC**       DIAMOND POLY - **CUT & SEW** OR **SUBLIMATED**  
                       COTTON 220GM - **CUT & SEW**



## VEST

Designed to maintain comfort and breathability whilst performing, allowing you to move freely during every exercise.

**FIT**               ATHLETIC  
**FABRIC**       DIAMOND POLY - **CUT & SEW** OR **SUBLIMATED**  
                       SMOOTH INTERLOCK - **CUT & SEW** OR **SUBLIMATED**



## MULTISPORT SHORT

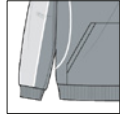
Providing support and freedom of movement during every exercise whilst maintaining performance levels.

**FIT**               5" INSEAM  
**FABRIC**       DIAMOND POLY - **CUT & SEW** OR **SUBLIMATED**  
                       SMOOTH INTERLOCK - **CUT & SEW** OR **SUBLIMATED**  
                       TASLON POLY - **CUT & SEW**  
                       BRUSHED FLEECE - **CUT & SEW**





**HEM**



RIBBED  
(STANDARD FOR  
BRUSHED FLEECE)



TURNED UP  
(STANDARD FOR  
MATT POLY FLEECE)

**HOODIE**

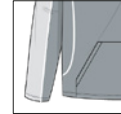
Built for a relaxed look, with supreme softness and optimum comfort - perfect for leisure and casual wear.

**FIT / FABRIC**    **REGULAR / BRUSHED FLEECE - CUT & SEW**  
**ATHLETIC / MATT POLY FLEECE - CUT & SEW OR SUBLIMATED**

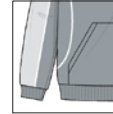
**POCKETS**        **POUCH OR SIDE SEAM**



**HEM**



TURNED UP  
(STANDARD FOR  
MATT POLY FLEECE)



RIBBED  
(STANDARD FOR  
BRUSHED FLEECE)

**SWEATER**

Designed with leisure in mind, this sweater combines a laid-back look with premium fleece fabric for maximum comfort and style.

**FIT / FABRIC**    **REGULAR / BRUSHED FLEECE - CUT & SEW**  
**ATHLETIC / MATT POLY FLEECE - CUT & SEW OR SUBLIMATED**



**ZIP OPTIONS**



1/4 ZIP



FULL ZIP

**PULLOVER**

A favourite among teams, ensuring players are warm and match ready - the ideal mid-layer.

**FIT**                **ATHLETIC**

**FABRIC**         **MATT POLY FLEECE - CUT & SEW OR SUBLIMATED**

**POCKETS**



TURNED  
OPEN



SIDE SEAM  
ZIPPED



**COLLAR**



FULL ZIP



1/4 ZIP

**POCKETS**



NONE



ZIPPED

**TRACKTOP**

Ideal for both pitch-side and leisure, the ultimate combination of performance and leisure. Pair with the leisure Track Pant for a complete tracksuit.

**FIT**                **ATHLETIC**

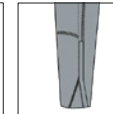
**FABRIC**         **SMOOTH NYLON - CUT & SEW OR PART SUBLIMATED**  
**TASLON POLY - CUT & SEW OR PART SUBLIMATED**  
**MICROLIGHT RIPSTOP - CUT & SEW OR PART SUBLIMATED**



**LEG LENGTH**

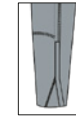


REGULAR



LONG

**SIDE LEG ZIP**



12"

**TAPERED TRACK PANT**

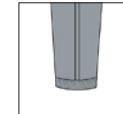
Designed and constructed with a modern style tapered fit, ideal for everyday leisure or training.

**FIT**                **TAPERED**

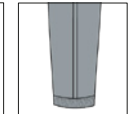
**FABRIC**         **MATT POLY FLEECE - CUT & SEW OR PART SUBLIMATED**  
**LIGHTWEIGHT MATT POLY FLEECE - CUT & SEW OR PART SUBLIMATED**



**LEG LENGTH**

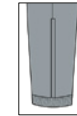


REGULAR

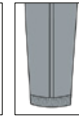


LONG

**SIDE LEG ZIP**



12"



23"

**TRACK PANT**

Allowing enhanced movement and agility without compromising on comfort. For the ultimate tracksuit, couple with the leisure Track Top.

**FIT**                **ATHLETIC**

**FABRIC**         **SMOOTH NYLON - CUT & SEW OR PART SUBLIMATED**  
**TASLON POLY - CUT & SEW OR PART SUBLIMATED**  
**MICROLIGHT RIPSTOP - CUT & SEW OR PART SUBLIMATED**  
**BRUSHED FLEECE - CUT & SEW**





T-SHIRT



POLO



VEST



SWEATER



HOODIE



MULTISPORT SHORT



PULLOVER



TRACKTOP

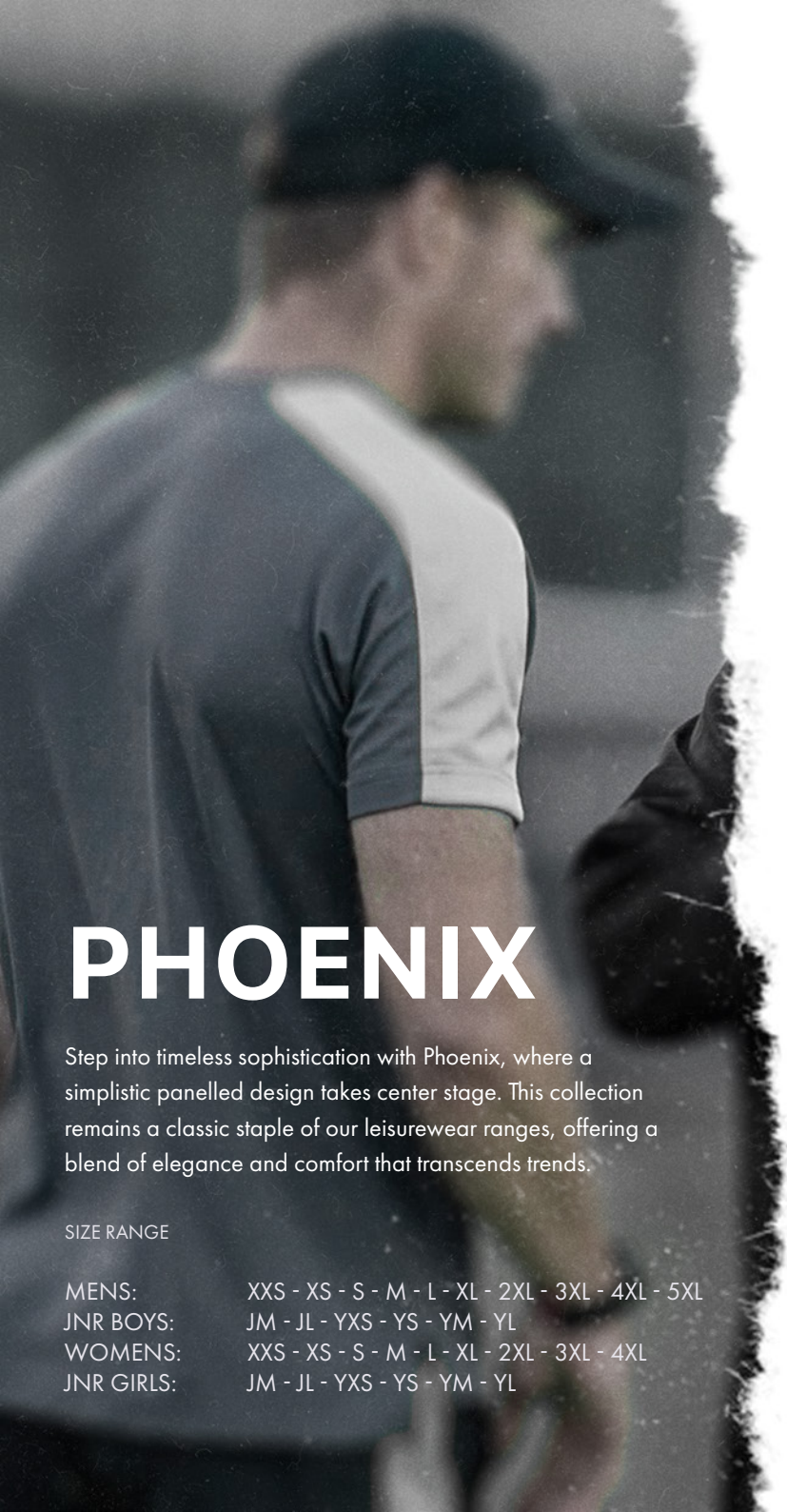


TAPERED TRACK PANT



TRACK PANT



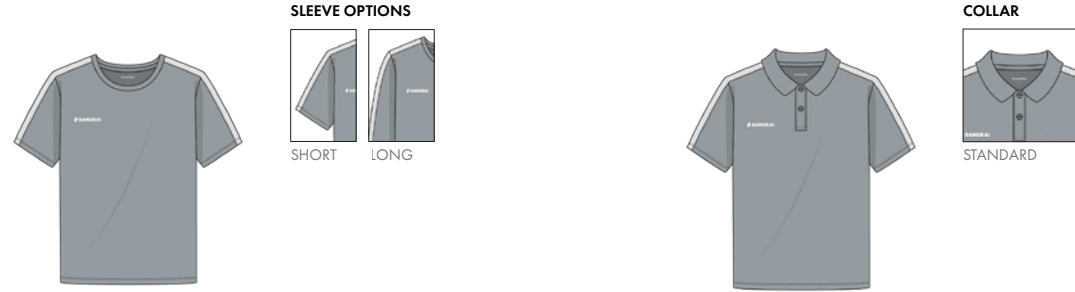


# PHOENIX

Step into timeless sophistication with Phoenix, where a simplistic panelled design takes center stage. This collection remains a classic staple of our leisurewear ranges, offering a blend of elegance and comfort that transcends trends.

**SIZE RANGE**

MENS:           XXS - XS - S - M - L - XL - 2XL - 3XL - 4XL - 5XL  
 JNR BOYS:    JM - JL - YXS - YS - YM - YL  
 WOMENS:     XXS - XS - S - M - L - XL - 2XL - 3XL - 4XL  
 JNR GIRLS:   JM - JL - YXS - YS - YM - YL



## T-SHIRT

A versatile essential designed for optimum movement, style and comfort; whatever the activity.

**FIT**            **ATHLETIC**  
**FABRIC**      **SMOOTH INTERLOCK - CUT & SEW OR SUBLIMATED**  
                     **COTTON 185GM - CUT & SEW**

## POLO SHIRT

Creating a complete team image, lightweight and classic in style - a traditional addition to any leisure range.

**FIT**            **ATHLETIC**  
**FABRIC**      **DIAMOND POLY - CUT & SEW OR SUBLIMATED**  
                     **COTTON 220GM - CUT & SEW**



## VEST

Designed to maintain comfort and breathability whilst performing, allowing you to move freely during every exercise.

**FIT**            **ATHLETIC**  
**FABRIC**      **DIAMOND POLY - CUT & SEW OR SUBLIMATED**  
                     **SMOOTH INTERLOCK - CUT & SEW OR SUBLIMATED**

## MULTISPORT SHORT

Providing support and freedom of movement during every exercise whilst maintaining performance levels.

**FIT**            **5" INSEAM**  
**FABRIC**      **DIAMOND POLY - CUT & SEW OR SUBLIMATED**  
                     **SMOOTH INTERLOCK - CUT & SEW OR SUBLIMATED**  
                     **TASLON POLY - CUT & SEW**  
                     **BRUSHED FLEECE - CUT & SEW**



**HEM**



RIBBED  
(STANDARD FOR  
BRUSHED FLEECE)



TURNED UP  
(STANDARD FOR  
MATT POLY FLEECE)

**HOODIE**

Built for a relaxed look, with supreme softness and optimum comfort - perfect for leisure and casual wear.

**FIT / FABRIC**    **REGULAR** / BRUSHED FLEECE - **CUT & SEW**  
**ATHLETIC** / MATT POLY FLEECE - **CUT & SEW** OR **SUBLIMATED**

**POCKETS**        **POUCH** OR **SIDE SEAM**



**HEM**



TURNED UP  
(STANDARD FOR  
MATT POLY FLEECE)



RIBBED  
(STANDARD FOR  
BRUSHED FLEECE)

**SWEATER**

Designed with leisure in mind, this sweater combines a laid-back look with premium fleece fabric for maximum comfort and style.

**FIT / FABRIC**    **REGULAR** / BRUSHED FLEECE - **CUT & SEW**  
**ATHLETIC** / MATT POLY FLEECE - **CUT & SEW** OR **SUBLIMATED**



**ZIP OPTIONS**



1/4 ZIP



FULL ZIP

**PULLOVER**

A favourite among teams, ensuring players are warm and match ready - the ideal mid-layer.

**FIT**                **ATHLETIC**

**FABRIC**         **MATT POLY FLEECE - CUT & SEW** OR **SUBLIMATED**

**POCKETS**



TURNED  
OPEN



SIDE SEAM  
ZIPPED



**COLLAR**



FULL ZIP



1/4 ZIP

**POCKETS**



NONE



ZIPPED

**TRACKTOP**

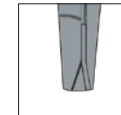
Ideal for both pitch-side and leisure, the ultimate combination of performance and leisure. Pair with the leisure Track Pant for a complete tracksuit.

**FIT**                **ATHLETIC**

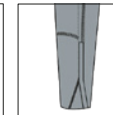
**FABRIC**         **SMOOTH NYLON - CUT & SEW** OR **PART SUBLIMATED**  
**TASLON POLY - CUT & SEW** OR **PART SUBLIMATED**  
**MICROLIGHT RIPSTOP - CUT & SEW** OR **PART SUBLIMATED**



**LEG LENGTH**

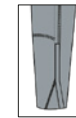


REGULAR



LONG

**SIDE LEG ZIP**



12"

**TAPERED TRACK PANT**

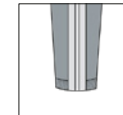
Designed and constructed with a modern style tapered fit, ideal for everyday leisure or training.

**FIT**                **TAPERED**

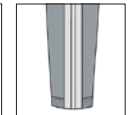
**FABRIC**         **MATT POLY FLEECE - CUT & SEW** OR **PART SUBLIMATED**  
**LIGHTWEIGHT MATT POLY FLEECE - CUT & SEW** OR **PART SUBLIMATED**



**LEG LENGTH**

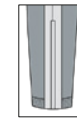


REGULAR



LONG

**SIDE LEG ZIP**



12"



23"

**TRACK PANT**

Allowing enhanced movement and agility without compromising on comfort. For the ultimate tracksuit, couple with the leisure Track Top.

**FIT**                **ATHLETIC**

**FABRIC**         **SMOOTH NYLON - CUT & SEW** OR **PART SUBLIMATED**  
**TASLON POLY - CUT & SEW** OR **PART SUBLIMATED**  
**MICROLIGHT RIPSTOP - CUT & SEW** OR **PART SUBLIMATED**  
**BRUSHED FLEECE - CUT & SEW**





T-SHIRT



POLO



VEST



SWEATER



HOODIE



MULTISPORT SHORT



PULLOVER



TRACKTOP



TAPERED TRACK PANT



TRACK PANT



NAVIGATOR JACKET

CORNISH PIRATES



**AZURA JACKET**

A complete water repellent jacket - designed to protect from the elements. Created with a drop tail hem for extra coverage and breathable underarm panelling offering both function and comfort when needed most.

|               |                              |
|---------------|------------------------------|
| <b>FIT</b>    | ATHLETIC                     |
| <b>TYPE</b>   | CUT & SEW                    |
| <b>FABRIC</b> | TASLAN NYLON OR SMOOTH WOVEN |



Additional colours available for trim and piping



**SOFTSHELL JACKET**

Manufactured in our water-repellent and windproof fabric providing both function and comfort - the ideal jacket to protect from the elements all year round.

|               |                             |
|---------------|-----------------------------|
| <b>FIT</b>    | REGULAR                     |
| <b>TYPE</b>   | CUT & SEW                   |
| <b>FABRIC</b> | PU COATED BONDED SOFT SHELL |



Additional colours available for trim and piping



**NAVIGATOR JACKET**

Manufactured in our water repellent Smooth Nylon fabric with 6oz wadding to provide full coverage. Featuring a full hood and a drop tail hem.

|               |              |
|---------------|--------------|
| <b>FIT</b>    | REGULAR      |
| <b>TYPE</b>   | CUT & SEW    |
| <b>FABRIC</b> | SMOOTH WOVEN |



**BLIZZARD JACKET**

Designed in a throw-back retro look offering multiple colour combinations adapting to fit your style. Constructed with light wadding for additional warmth and comfort.

|               |                        |
|---------------|------------------------|
| <b>FIT</b>    | ATHLETIC               |
| <b>TYPE</b>   | CUT & SEW              |
| <b>FABRIC</b> | PU COATED TASLAN NYLON |



Additional colours available for trim and piping

SIZE RANGE

MENS:           XXS - XS - S - M - L - XL - 2XL - 3XL - 4XL - 5XL  
 JNR BOYS:    JM - JL - YXS - YS - YM - YL  
 WOMENS:     XXS - XS - S - M - L - XL - 2XL - 3XL - 4XL  
 JNR GIRLS:   JM - JL - YXS - YS - YM - YL



### BESPOKE BOBBLE HAT

CORNISH PIKES



## BOBBLE HATS, CAPS AND OTHER HATS

We can offer you a huge variety of hats from caps, bucket hats and many more. Along with our huge choice of head wear comes an unmatched range of customisable features from colours, to logo application methods and additional accessories.

|               |                                 |
|---------------|---------------------------------|
| <b>FIT</b>    | UNISEX                          |
| <b>FABRIC</b> | DEPENDANT ON INDIVIDUAL PRODUCT |
| <b>SIZES</b>  | ONE SIZE                        |



FIXED STRIPE



STRIPES



SOLID COLOUR



HARLEQUIN

## TRADITIONAL JERSEYS

Wear your colours with pride with a vintage style rugby shirt. Inspired by traditional styles, these shirts are engineered in our heavy-weight cotton blend jersey and designed to bring a contemporary take on the unforgettable styles from an iconic era of rugby.

|                |   |
|----------------|---|
| <b>FIT</b>     | UNISEX - REGULAR FIT  |
| <b>FABRIC</b>  | IKEDA   |
| <b>COLLARS</b> | STANDARD OR ROUND   |
| <b>SIZES</b>   | YOUTH: XS - S - M - L SENIOR: XXS - XS - S - M - L - XL - 2XL - 3XL - 4XL |

### TRADITIONAL JERSEYS



LEISUREWEAR // ADDITIONAL

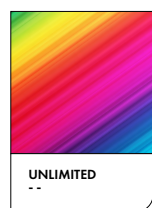




## CUT & SEW COLOUR STOCK OPTIONS

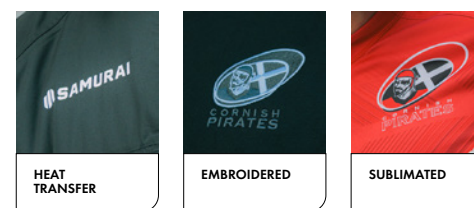
With an extensive collection of fabrics that boast superior performance functionalities, our cut & sew fabrics are available in a wide selection of colours\* to help you find the right fit for you.

\*Fabric and colour options subject to availability.



## SUBLIMATED COLOUR OPTIONS

Unlimited colours\* to create infinite designs - sublimated colours are matched to Pantone Solid Coated; giving a wider range than the standard CMYK options to offer more creative freedom.



## EMBELLISHMENTS

It's not a complete kit without your club crest. We offer a range of different options to best display your team's logos - from striking heat transfers to premium complex embroideries - find a finish that works best for you.

## ATHLETIC FIT

A more streamlined fitting silhouette. Designed to be tighter fitting for a more athletic physique.

## REGULAR FIT

A more relaxed, looser fitting silhouette. Not tailored to a specific body shape.

### UNISEX (VAT Applicable)

|                       | XXS | XS  | S   | M   | L   | XL  | 2XL | 3XL | 4XL | 5XL |
|-----------------------|-----|-----|-----|-----|-----|-----|-----|-----|-----|-----|
| To fit chest (inches) | 36" | 38" | 40" | 42" | 44" | 46" | 48" | 50" | 52" | 54" |
| To fit waist (inches) | 29" | 30" | 32" | 34" | 36" | 38" | 40" | 42" | 44" | 46" |
| To fit chest (cms)    | 87  | 92  | 102 | 107 | 112 | 117 | 122 | 127 | 132 | 137 |
| To fit waist (cms)    | 74  | 76  | 82  | 87  | 92  | 97  | 102 | 107 | 112 | 117 |

### WOMEN (VAT Applicable)

|                       | XXS | XS  | S   | M   | L   | XL  | 2XL | 3XL | 4XL |
|-----------------------|-----|-----|-----|-----|-----|-----|-----|-----|-----|
| To fit chest (inches) | 30" | 32" | 34" | 36" | 38" | 40" | 42" | 44" | 46" |
| To fit waist (inches) | 24" | 25" | 26" | 28" | 30" | 32" | 34" | 36" | 38" |
| To fit chest (cms)    | 76  | 82  | 87  | 92  | 97  | 102 | 107 | 112 | 117 |
| To fit waist (cms)    | 61  | 64  | 66  | 71  | 76  | 82  | 87  | 92  | 97  |

### CHILDREN

|                       | JUNIOR |     |     |     | YOUTH |     |     |     |
|-----------------------|--------|-----|-----|-----|-------|-----|-----|-----|
|                       | XS     | S   | M   | L   | XS    | S   | M   | L   |
| To fit chest (inches) | 19"    | 21" | 23" | 25" | 27"   | 29" | 31" | 33" |
| To fit waist (inches) | 18"    | 20" | 22" | 23" | 24"   | 25" | 27" | 28" |
| To fit chest (cms)    | 49     | 54  | 59  | 64  | 69    | 74  | 79  | 84  |
| To fit waist (cms)    | 46     | 51  | 56  | 59  | 61    | 64  | 69  | 71  |



**E:** [INFO@SAMURAI-SPORTS.COM](mailto:INFO@SAMURAI-SPORTS.COM)

**T:** 01508 531010

**W:** [SAMURAI-SPORTS.COM](http://SAMURAI-SPORTS.COM)

**NORFOLK HQ:**

GF2 ROXBURGH HOUSE  
ROSEBERY BUSINESS PARK  
NORWICH  
NR14 7XP

**LONDON HQ:**

UNIT 203 CREMER BUSINESS CENTRE  
37 CREMER STREET  
LONDON,  
E2 8HD