

WARNING: Bikes or rack falling in road can cause serious accidents resulting in bodily injury-do not use rack on any vehicle on which it can not be properly mounted as described in this instruction sheet.

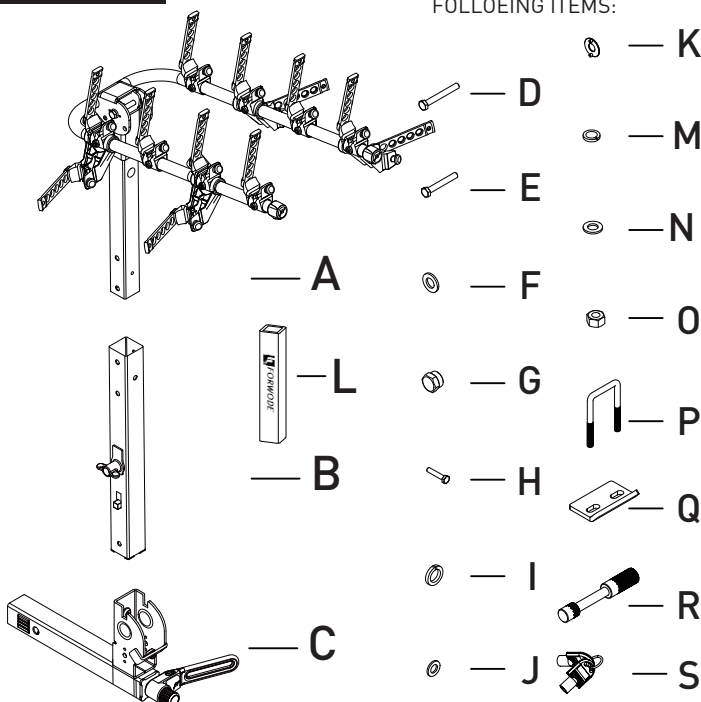
- Rack should only be used on vehicles with 2" receiver hitches.
- **NEVER** use on trailers or front of vehicles.
- Bikes must be tied to rack using tie-downs, or additional straps if necessary.
- Check periodically during use that all bolts and pins are tight, and that rack and bicycles are secure.
- Never carry more than **4 bikes (max capacity 140 LB)** - no tandems, mopeds, or recumbent. Car tail lights must remain visible.
- Drive conservatively, especially over bumps. Never use off-road.
- Do not use if any part of the rack is damaged, worn, or missing. Contact **FORWODE** for replacement parts.
- The presence of the cushion in the upper assembly of the functional model vertical tube requires it to be squeezed deformation, the holes can be aligned.

CAUTION: Use Forwode only in accordance with local motor vehicle and traffic regulations.

- Install rack and load bicycles only at a safe distance away from moving traffic.
- Make sure that all of rack and bicycles are kept at a safe distance from road and hot exhaust.
- Only operate vehicle with rack in an upright, locked position.
- Bicycles should never extend beyond sides of vehicle.
- Remove rack from car, or fold carry arms down when not in use.

A. PARTES:

BOX SHOULD CONTAIN THE FOLLOEING ITEMS:

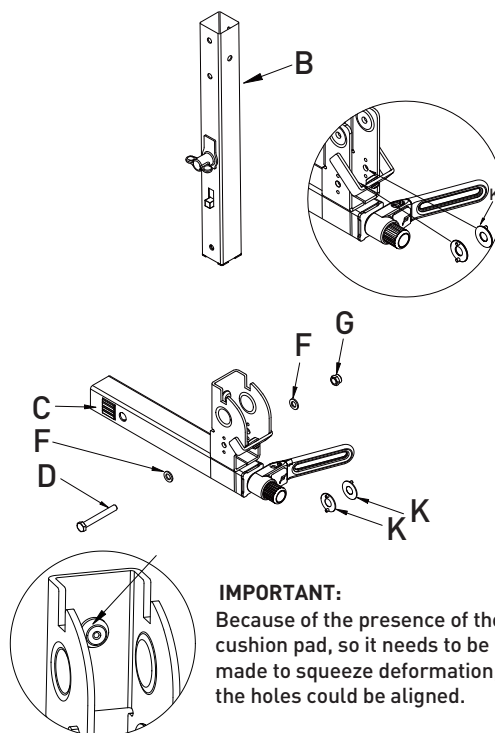


ITEM NO.	DESCRIPTION	QTY.	ITEM NO.	DESCRIPTION	QTY.
A	Base Assembly	1	J	Flat pad Ø8	1
B	Vertical Tube	1	K	Round shims with positioning	2
C	Vertical tube upper assembly	1	L	Anti-collision cotton cover	1
D	External hexagon bolts M10*80	1	M	Heavy Duty Bullet Pads Ø10	2
E	External hexagon bolts M10*65	2	N	Big Flat pad Ø10	2
F	Flat pad Ø10	6	O	Hexagonal nuts M10	2
G	Self-locking nuts	3	P	U-connector	1
H	External hexagon bolts M8*20	1	Q	Fixed plate	1
I	Bouncing Pad Ø8	1	R	Trailer lock	1
			S	Trailer Lock Key	2

B. ASSEMBLING RACK:

STEP 1

- Put two pieces of **K** into the interior of **C** in advance. (The two cylinders of K are inserted into the two small holes).
- Insert **B** into the inside of **C**, then connect them in order with **D-F-F-G** fasteners.

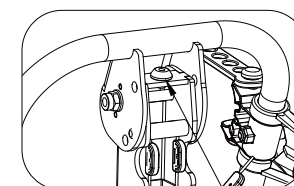


IMPORTANT:
Because of the presence of the cushion pad, so it needs to be made to squeeze deformation, the holes could be aligned.

STEP 2

TOOLS REQUIRED: 2--5/8" WRENCH & 2--11/16" WRENCH;
OR 2--ADJUSTALE WRENCHES

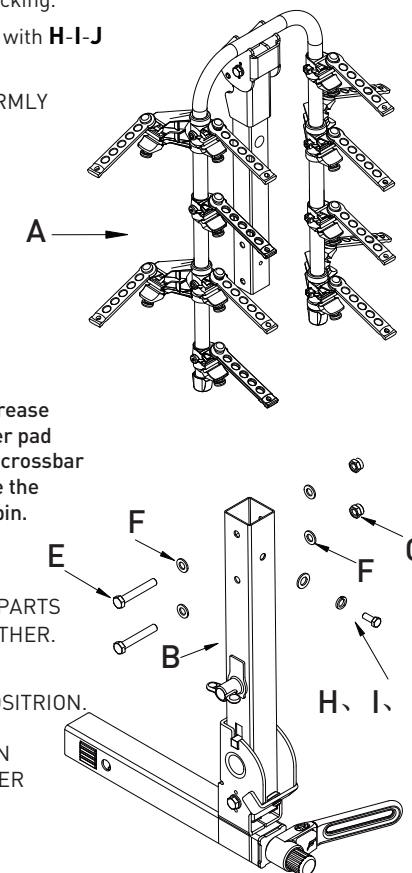
- Plug **A** and **B** together, and connect the two holes on the side with two sets of standard parts **E-F-F-G** locking.
- Connect one hole on the front side with **H-I-J** locking.
- **TIGHTEN NUT AND BOLT FIRRRRRMLY USING TRWO WRENCHES.**



CAUTION:
In order to protect the product, increase durability and reduce noise, a buffer pad is added here. When the U-shaped crossbar is folded, it is necessary to squeeze the buffer pad hard, and then pull the pin.

NOTE: UPON COMPLETION, BOTH PARTS SHOULD BE FIRMLY JOINED TOGETHER.

IMPORTANT:
WHEN RACK IS IN AN UPRIGHT POSITRION, WIRE RETAINER ON CLIP SHOULD ALWAYS BE IN A CLOSED POSITION TO KEEP RACK FROM FALLING OVER DURING USE.



C. BIKE RACK FASTENING DEVICE:

• HOLD **⑥** WITH YOUR LEFT HAND AND PULL IT OUTWARD SLIGHTLY.

• SQUEEZE **③** TIGHTLY WITH THE RIGHT HAND AND TIGHTEN.

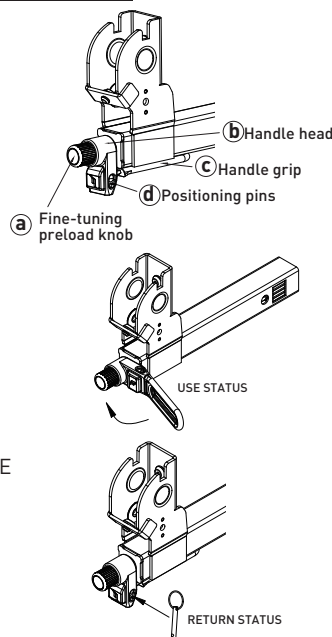
• LOOSEN **⑥**.

• PULL OUT **④** AND ROTATE **③** TO 90°.

• INSERT **④** AND ROTATE THE HANDLE CLOCKWISE UNTIL TIGHTENED.

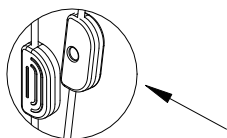
• PULL OUT **⑥** WITH FORCE AND ROTATE BACK TO THE INITIAL STATE TO TIGHTEN AGAIN.

• DISASSEMBLY STEPS REFER TO TIGHTENING STEPS



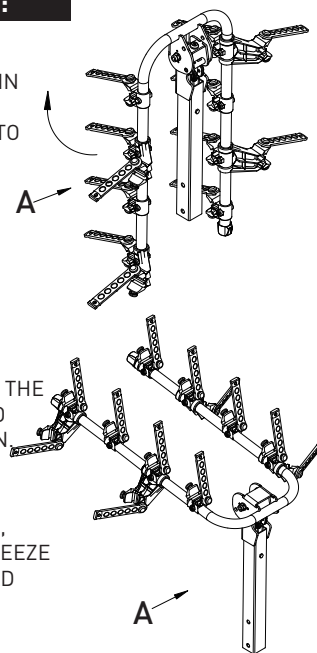
D. FOLDING UP CARRY ARMS:

• FOLD THE U-SHAPED TUBE OF **A** IN THE DIRECTION SHOWN BY THE ARROW, AND FORCE THE HOLES TO ALIGN, AND THE POP PIN INSIDE THE TUBE AUTOMATICALLY MAKES IT FIXED.



• PINCH THE ELASTIC PART INSIDE THE TUBE OF A WITH TWO FINGERS TO REALIZE THE FLIPPING FUNCTION.

• **IMPORTANT:** BECAUSE OF THE PRESENCE OF THE CUSHION PAD, SO IT NEEDS TO BE MADE TO SQUEEZE DEFORMATION, THE HOLES COULD BE ALIGNED.



E. LOADING BICYCLES ON RACK:

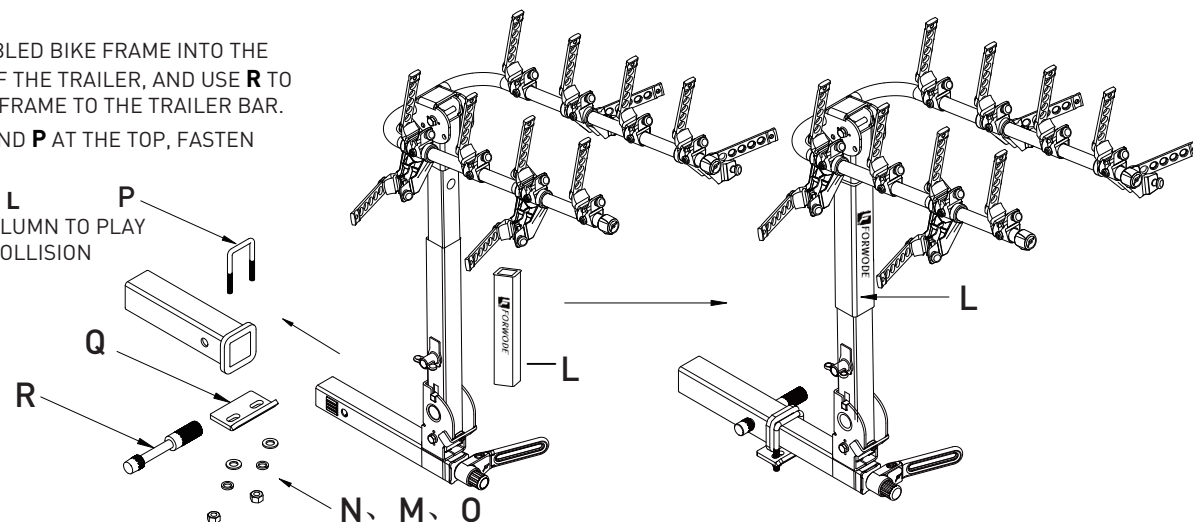
1. REMOVE ALL LOSE ITEMS FROM BICYCLES (PUMPS, BAGS, ETC.), AND CHECK THAT ALL QUICK RELEASE HUBS ARE TIGHT.
2. LOAD FIRST BICYCLE WITH ITS CHAIN AND GEARS FACING AWAY FROM RACK, MAKE SURE THAT BICYCLES DO NOT COME IN CONTACT WITH VEHICLE.
3. LOAD SUBSEQUENT BICYCLES IN ALTERNATING DIRECTIONS FOR BEST WEIGHT DISTRIBUTION. LOAD HEAVIEST BICYCLES FIRST, WITH LIGHTER BICYCLES ON THE OUTSIDE, ADD PADDING BETWEEN BICYCLE CONTACT POINTS, IF NECESSARY.
4. AFTER BICYCLES ARE LOADED, CHECK THAT ENTIRE RACK IS SECURE AND THAT NO-WOBBLE BOLTS IS TIGHT, AND THAT THE RACK IS STILL FIRMLY IN PLACE. VISION OUT OF REAR WINDOW MAY BE RESTRICTED-USE SIDE MIRRORS ACCORDINGLY WHEN BACKING UP.

SPECIAL NOTE ON INSTALLING WOMEN'S STYLE FRAMES:

PLACE ONE CARRY ARM UNDER FRONT TOP TUBE. WITH THE OTHER CARRY ARM, ROTATE TIE-DOWN CRADLE, AND PLACE CARRY IN SPACE REAR DOWN-STAY. FORWODE IS ALSO RECOMMENDED FOR THIS APPLICATION.

F. SECURE INSTALLATION BIKE RACK:

1. INSERT THE ASSEMBLED BIKE FRAME INTO THE SQUARE OPENING OF THE TRAILER, AND USE **R** TO CONNECT THE BIKE FRAME TO THE TRAILER BAR.
2. **Q** AT THE BOTTOM AND **P** AT THE TOP, FASTEN WITH **N-M-O**.
3. ALL FASTENED, THE **L** WRAPPED IN THE COLUMN TO PLAY THE ROLE OF ANTI-COLLISION CUSHIONING.



FORWODE LIFETIME WARRANTY:

IF AN FORWODE BIKE RACK IS FOUND TO HAVE A DEFECT IN WORKMANSHIP OR MATERIAL OVER THE LIFETIME OF THE ORIGINAL PURCHASE, FORWODE WILL REPAIR OR REPLACE THE RACK FREE OF CHARGE. THE WARRANTY DOES NOT COVER DAMAGE OR WEAR WHICH OCCURS AS A RESULT OF DAY TO DAY USE OR GENERAL WEAR AND TEAR.



SERVICE@FORWODEBIKE.COM



Forwode Bike



Forwode Bike



FORWODEBIKE