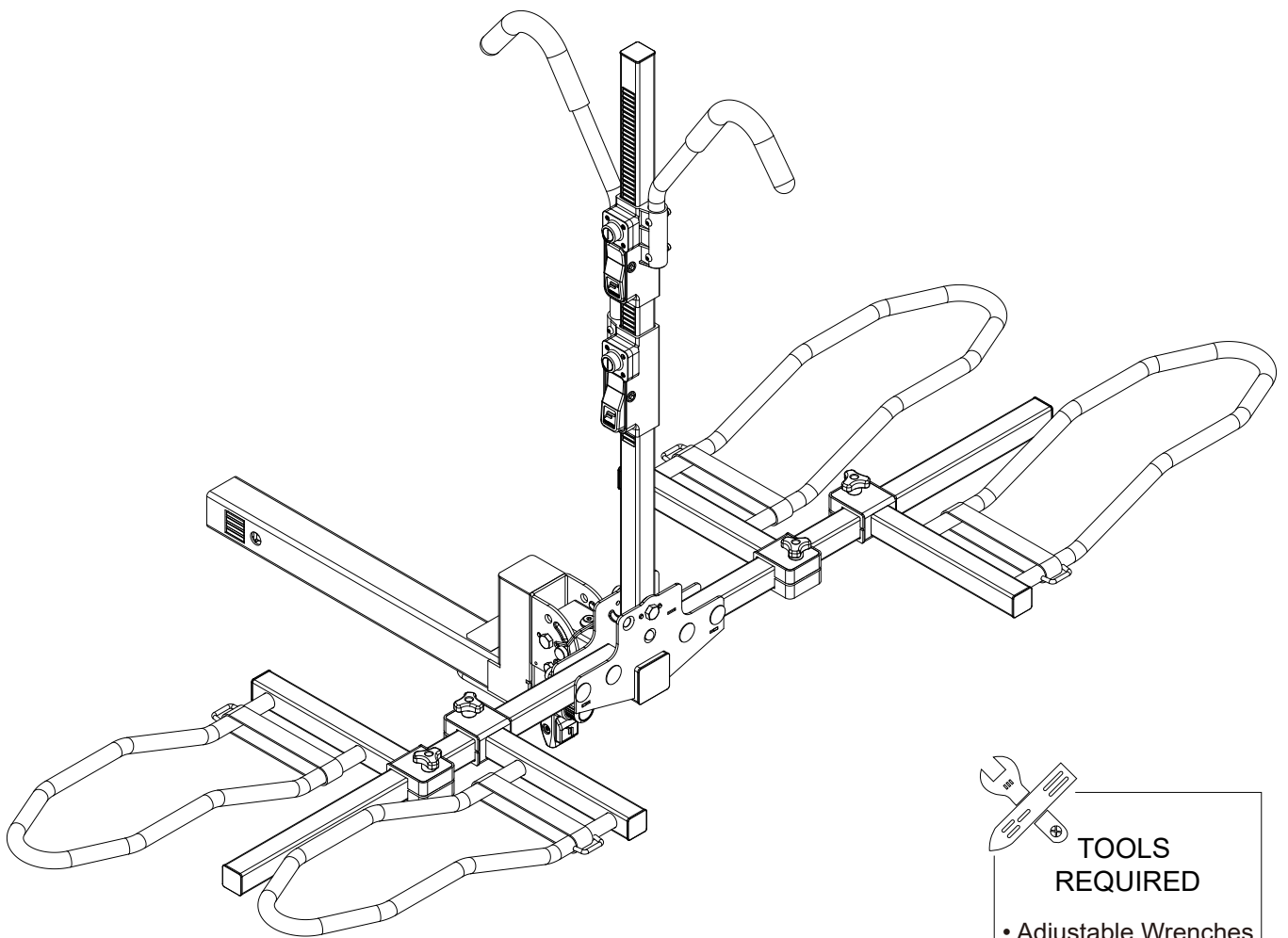


2-BIKE HITCH-TIGHTENING SYSTEM TILT-FOLD BICYCLE RACK

Model:DB-HBS32

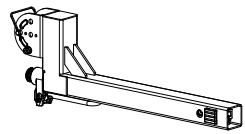
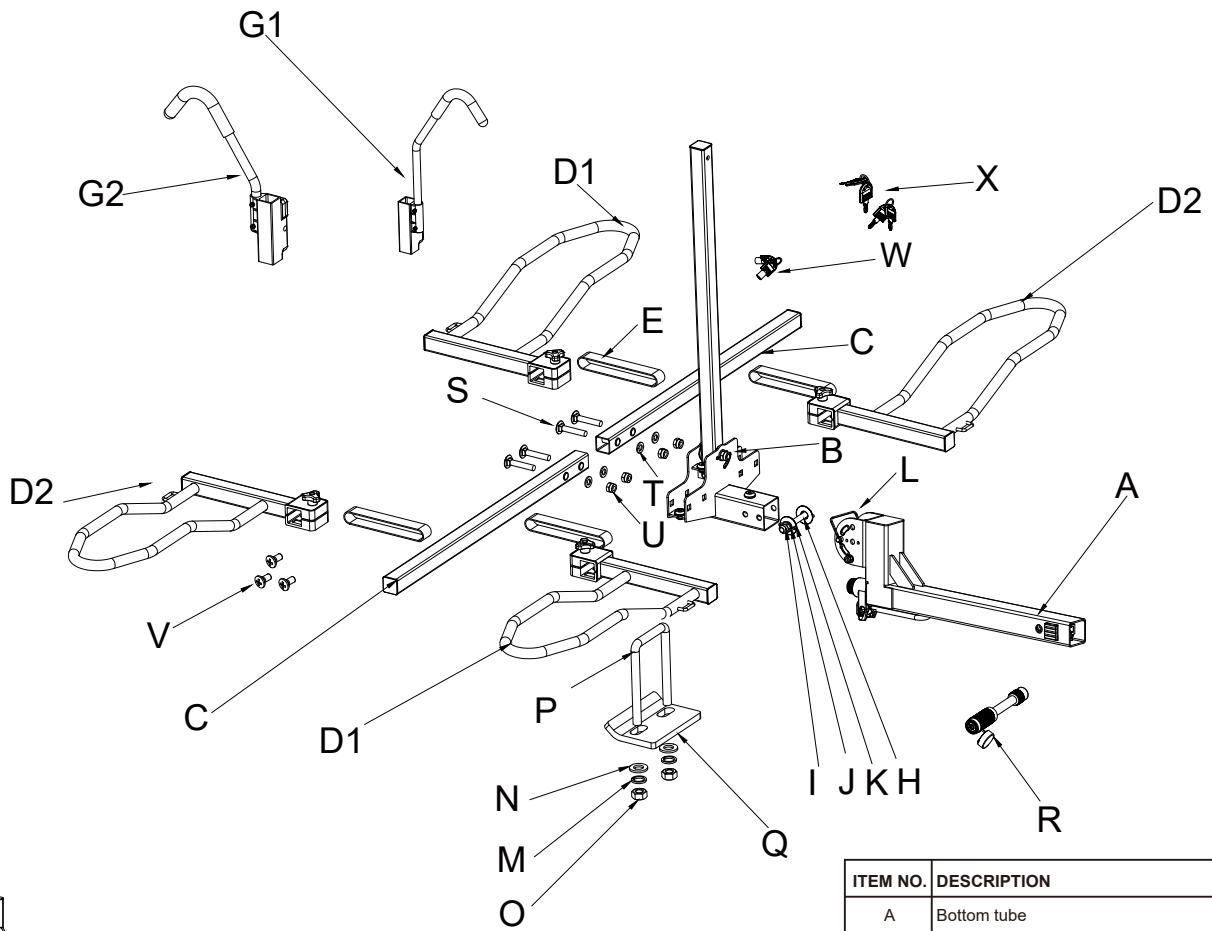


**TOOLS
REQUIRED**

- Adjustable Wrenches
Or 11/16" & 3/4"
Wrenches
- Phillips Screwdriver

INSTRUCTION

PRODUCT PARTS CATALOG



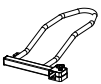
A



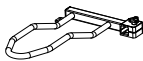
B



C



D1



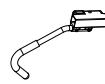
D2



E



G1



G2



H



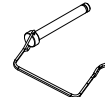
I



J



K



L



M



N



O



T



U



P



Q



R



S



V



W

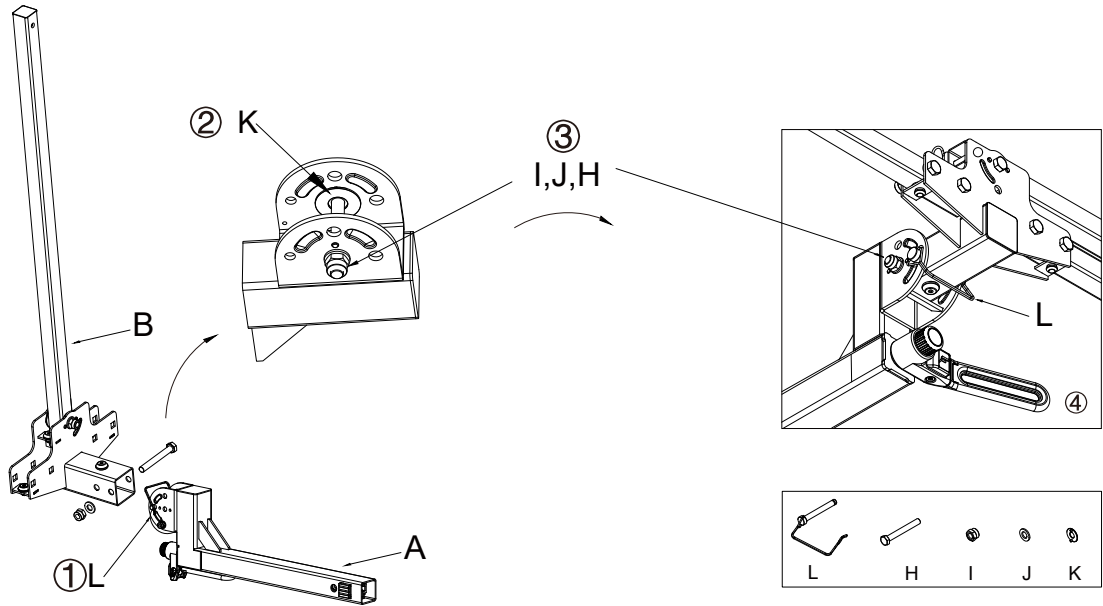


X

ITEM NO.	DESCRIPTION	QTY.
A	Bottom tube	1
B	Vertical tube	1
C	Cross tube assembly	2
D1	Fixed bend tube assembly 1	2
D2	Fixed bend tube assembly 2	2
E	Wheel fixing straps	4
G1	Fixed hook 1 assembly	1
G2	Fixed hook 2 assembly	1
H	Half tooth carriage bolt M12	1
I	Self-collar nut M12	1
J	Flat spacer Φ12	1
K	Round with positioning spacer	2
L	Square pin	1
M	Heavy duty spring pad Φ10	2
N	Large flat pad Φ10	2
O	Hexagonal nut M10	2
P	U-connector	1
Q	Fixing plate	1
R	Trailer lock	1
S	Half tooth carriage bolt M10*55	4
T	Flat pad Φ10	4
U	Self-locking nut M10	4
V	Phillips bolt M5*8	3
W	Trailer lock Key	2
X	Cross-rail fixed assembly Key	4

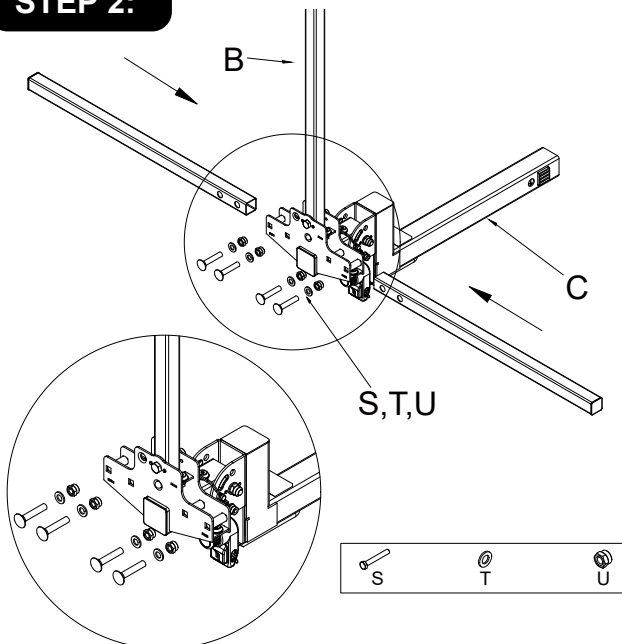
INSTALLATION STEPS

STEP 1:



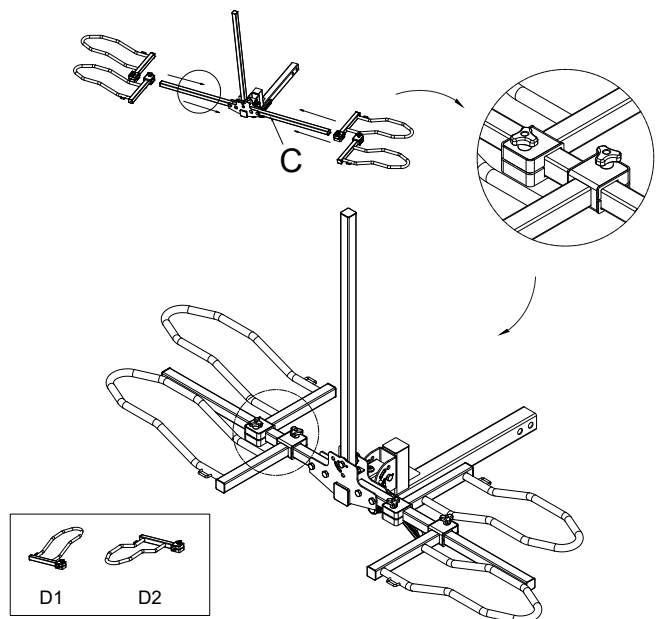
- ① Remove **L** from **A**.
- ② Two pieces of **K** are loaded into the inside of **A** in advance. (The two cylinders of **K** are inserted into the two small holes).
- ③ Insert **B** into the interior of **A** and then connect in order with **I-J-H** fasteners.
- ④ Insert **L** from **A** into **B** and fasten.

STEP 2:



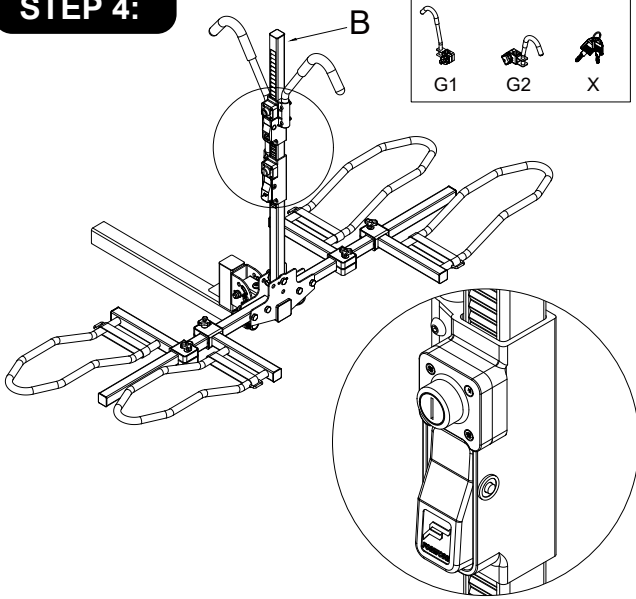
Insert **C** into figure **B**, the 4 holes on the side are connected with 4 sets of standard parts **S-T-U** locking respectively (**Install the two inner holes first and then the outermost hole**) .

STEP 3:



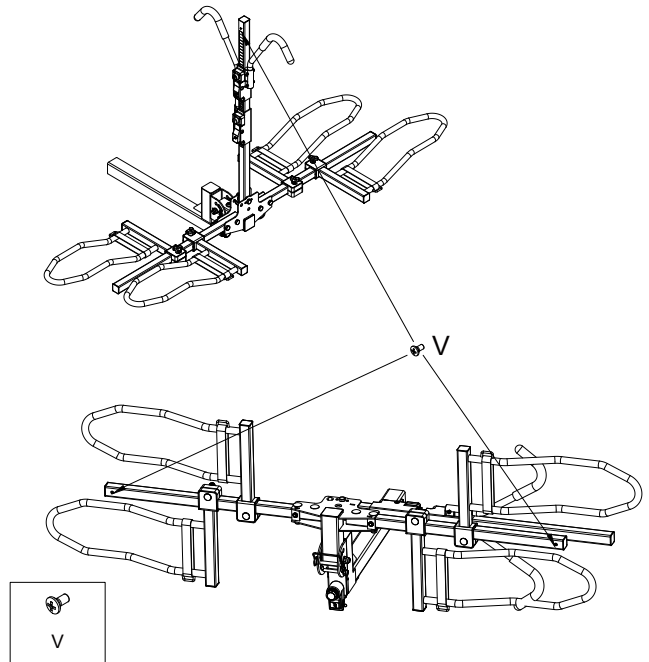
Insert **D1** and **D2** into figure **C**, respectively, and lock the connection with their own hand screw nuts.

STEP 4:



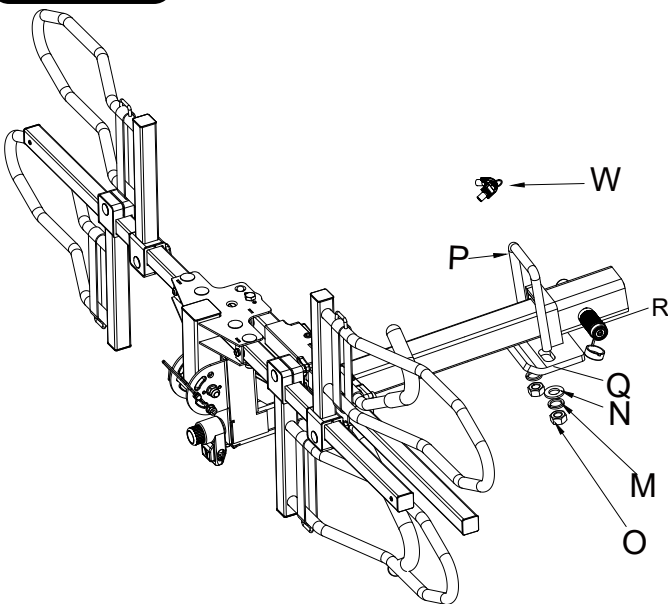
Insert the **G1** and **G2** components into the upper square opening of the assembled bike frame **B**, Use the key **X** to position the sliding position, adjust to suitable position, lock **G1 G2** with key **X**.

STEP 5:



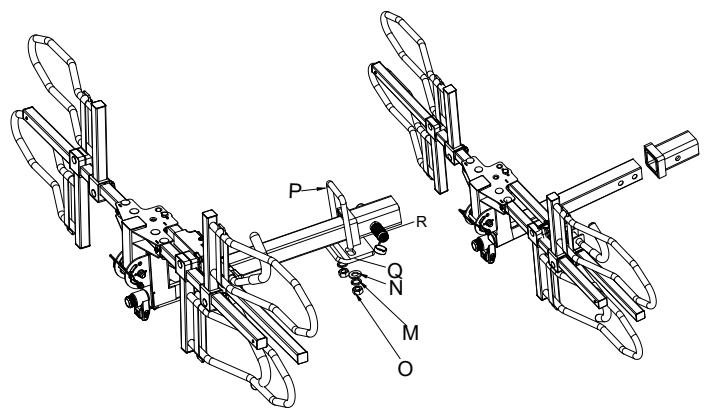
Insert the **V** at the place marked by the arrow above, and tighten it with a screwdriver.

STEP 6:



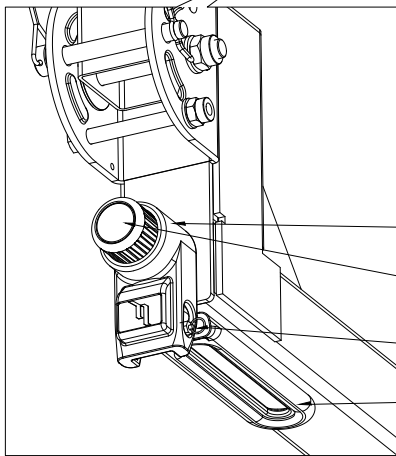
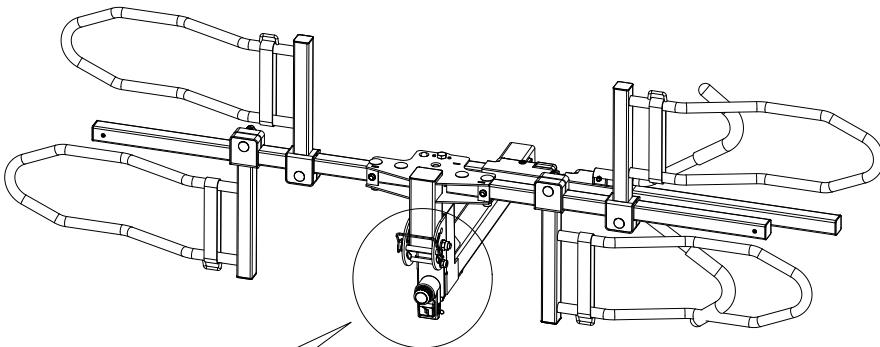
- ① Insert **R** into the trailer bar.
- ② Lock the trailer lock (R) with the key (W) and keep the key
- ③ Pass **P,Q** through **O,M,N** and lock them with

DISASSEMBLY STEPS



- ① Disassemble the **R** remove **O-M-N** with the handle and remove **P-Q** and put it away.
- ② Disassemble the **R**.
- ③ Pull out from the trailer bar.

TIGHTEN THE HANDLE

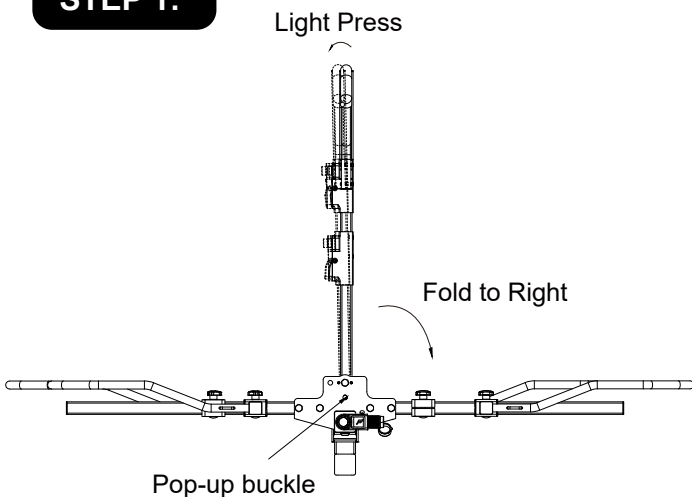


- **b** Handle head
- **a** Fine-tuning preload knob
- **d** Positioning pins
- **c** Handle grip

- Hold **b** with your left hand and pull it outward slightly.
- Squeeze **a** tightly with the right hand and tighten.
- Loosen **b**.
- Pull out **d** and rotate **c** to 90°.
- Insert **d** and rotate the handle clockwise until tightened.
- Pull out **b** **c** with force and rotate back to the initial state to tighten again.
- Disassembly steps refer to tightening steps.

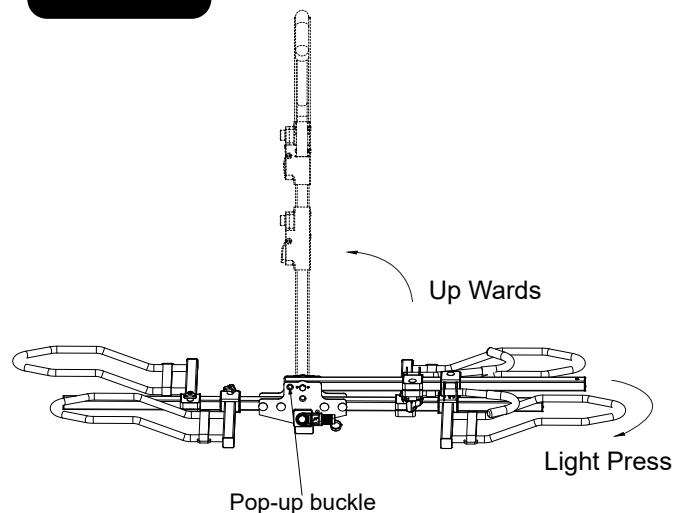
RACK FOLDING STEPS

STEP 1:



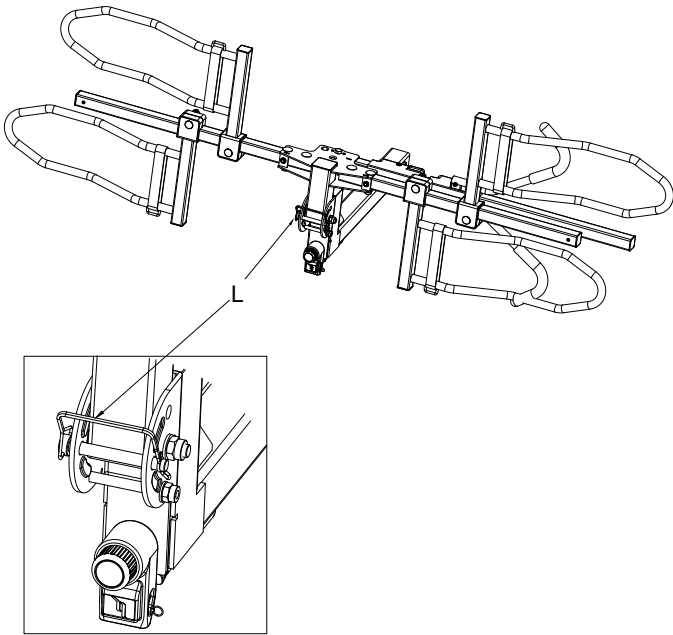
Press the column slightly to the left, while pressing the pop-up buckle as shown, and fold the column to the right.

STEP 2:



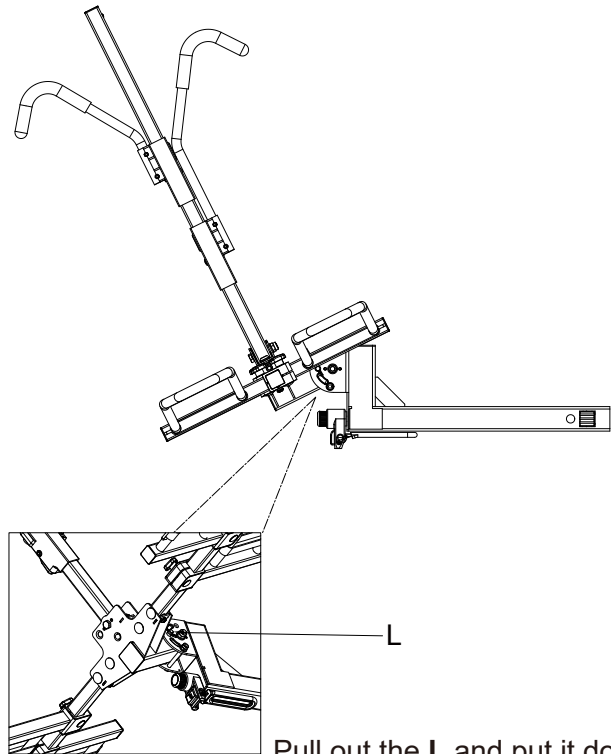
Press the downed column slightly downward, while pressing the pop-up buckle as shown in the picture, and lift the column to the left.

STEP 3:



Pull out the L-square pin and rotate the frame by 90 degrees, then insert the L to fold and collect.

RACK TILT STEPS



Pull out the L and put it down.

GENERAL CONSIDERATIONS

1. Every month new designs and bodies are introduced to the market.
2. While the FORWODE bike carrier design team strives to make most products universal to the cars on the market. It is impossible for a single bike carrier to fit all models of cars on the market.
3. Before you purchase a rack, please check if the rack fits your vehicle with an authorized FORWODE Bike Rack dealer or distributor.
4. Before installation, please read the instructions and then follow the attached instructions.
5. Before installation, please make sure all parts are preset and in working condition. For any missing or damaged parts, please contact your authorized FORWODE Bike Rack dealer or distributor.
6. Please always keep this manual for future reference.

WARNING WHEN INSTALLING THE FRAME

1. When the vehicle is equipped with an electric rear fender, the power must be turned off when installing the rear carrier. If this option is not available, do not use the rear bike carrier.
2. Clean the receiver connector thoroughly before installing.
3. When the vehicle is equipped with a spoiler or similar item, it is necessary to change the mounting method of the bike carrier. If this happens, please contact an authorized FORWODE bike carrier verifying dealer or distributor.
4. When using the bike carrier, please observe local traffic laws.
5. When not in use, please remove the rack before washing your bike.

WARNING WHEN MOUNTING THE BICYCLE

1. When you ride your bicycle, make sure that it does not touch the vehicle, especially the pedals. Using protective foam pads may be helpful.
2. Remove all loose items before mounting the bike. For example, water bottles.
3. Bicycle tires must be kept away from vehicle exhaust fumes.
4. Always observe the weight of each bicycle (60 lbs. maximum per bicycle) and the capacity of the bicycle, according to the manufacturer's recommendations.
5. Bike mounts/bikes are mounted with different road behavior for vehicles. Use extreme caution when driving in high winds, sharp turns and on rough roads. Drive slowly over speed bumps (10 km/h)
6. Vehicles with bike racks installed have extra width and length. Also, make sure that the bicycle is mounted in the middle to avoid excessive protrusion.
7. When the vehicle is equipped with a bicycle rack, check the installation of the rack and the installation of the bicycle every 100 km while driving. It is the driver's responsibility to ensure the safety of passengers and others!

WARRANTY AND LIABILITY

1. FORWODE does not bother to assume any liability for any damages (to the vehicle, damage caused by incorrect installation and use of this product or its accessories, goods and/or persons in connection with the purchase, use or handling of this product).
2. If you have further questions about our limited lifetime warranty or need any support, you can start a conversation with us at service@forwodebike.com.



SERVICE@FORWODEBIKE.COM



Forwode Bike



Forwode Bike



FORWODEBIKE