

HELIOSA® HI DESIGN - HELIOSA 44

Stylish and efficient infrared heating from Italy

Heliosa 44: 44MOB
2000 watt heater
White Part No: # 690062
Grey Part No: # 690068



Effective - Short wavelength light warms the person, not the room
Efficient - Ideal for open spaces where conventional heating is wasted on heating air that rises to the ceiling
Aesthetic - amber light illuminates with a gentle glow
Stylish - curved lamp housing is adaptable to any modern décor
Versatile - for indoor or outdoor use
Long life - lamps run up to 7,000 hours

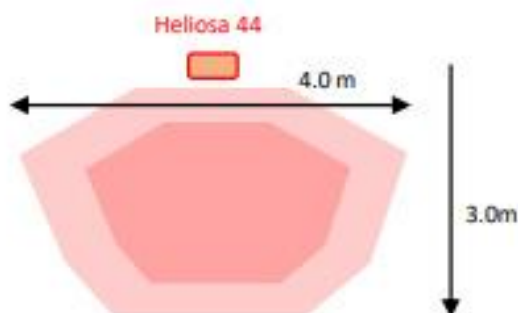
Heliosa 44 Specification:



2000 watt amber heater
Housing: 46 x 14 x 16 cm, 1.6 kg, IPX5
Working height: 2.2 - 2.4 m
For warming area: up to 15 m²
Includes SS grille, 3.0 m cable
Short bracket for wall mount

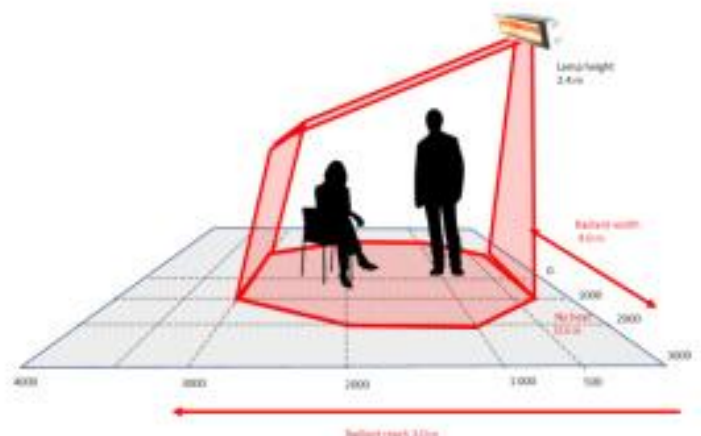
Heliosa 44 Radiant Range:

Typical radiant area for an outdoor area.



For an open outdoor area with no roof, radiant output is reduced.

Heliosa radiant output is like a flood light.



Radiant output has a strong centre that tapers off at the edges. There is no heat directly below the heater.

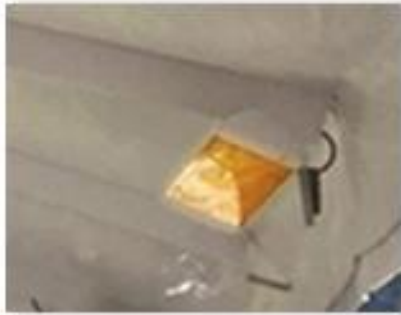
Heater Mounting Options:

Wall mount 30-45 °



Heater bracket installed between upper and lower tabs.

Ceiling mount 30-45 °



Heater bracket installed outside upper tab.

Ceiling mount overhead



Heater can be mounted horizontal but undercover if outdoors.

Adjusting tilt and swivel angles:

Tilt range 0 - 45°



Tighten heater bolt to lock heater at desired angle.

Swivel range - 30° to + 30°



Tighten bracket bolt to fix swivel angle.

Standard Mounting brackets:

Heliosa 44 is usually installed with the short wall bracket:



Short wall bracket is included in the box .



Optional long bracket can be mounted in the upper position with two screws (not supplied).



For sites requiring more clearance from the roof then bracket can be installed in the lower position.



Long bracket:
White # 690401
Grey # 690402

Installing the heater bracket:

The heater bracket is installed with the supplied long M8 bolt (Use 13 mm spanners).



Heater bracket is bolted to the mounting bracket with the supplied short M8 bolt (use 13 mm spanners).



Heliosa 44 on the Scala Stand

Heliosa 44 can be installed on the Scala stand:

Carrara White # 690302
Cast Iron Grey # 690303

When outdoors and subject to wind gusts, use sand bags for stabilising base.

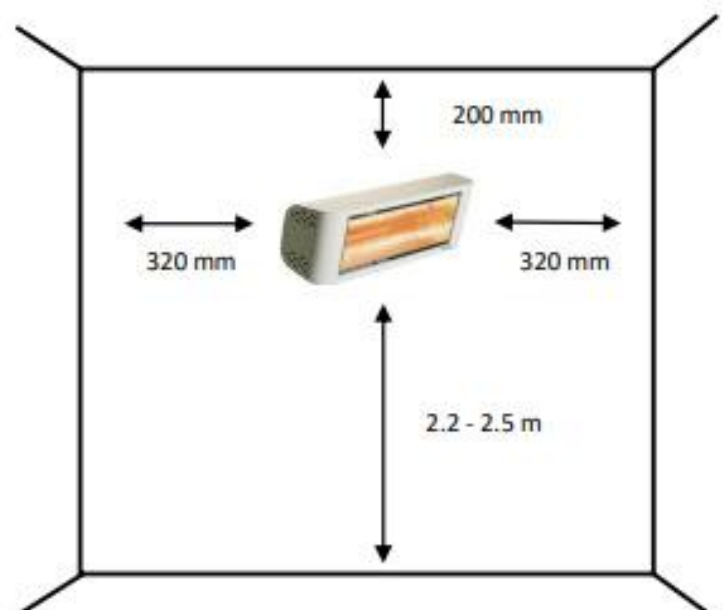


Replacement Lamp

Heliosa 44/66 Infracalor 2000 watt lamp:
Amber # 690257



Heliosa 44 Clearances



Unpacking carton

Open box and lay sideways so thick foam section is on the bottom.



Grasp heater and gently pull out the heater and packaging.



Installing the grill:

Check grille prongs align with holes along reflector edges.



Grasp grille and squeeze to bend grill prongs inwards.



Insert lower prongs into lower edge then – squeezing grille – insert upper prongs into upper edge.



Centre the grille in reflector.



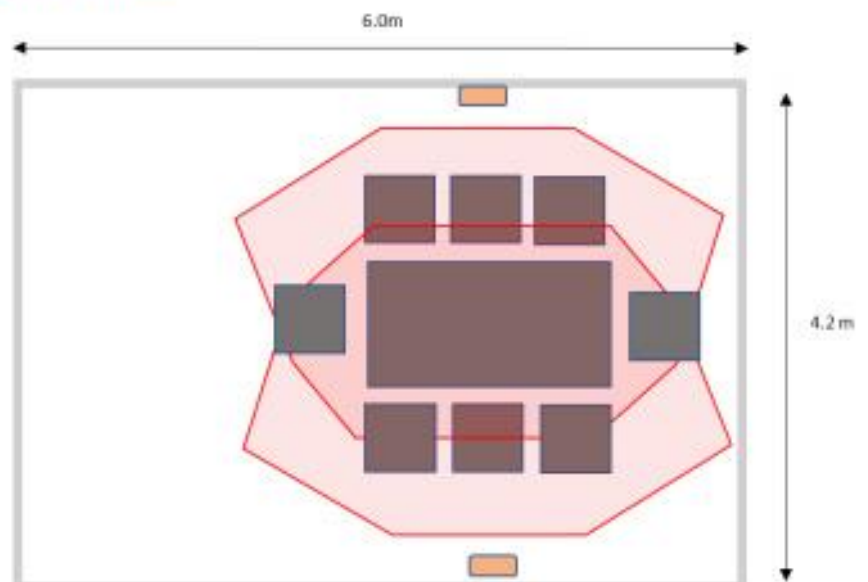
Locating the heaters for optimum effect:

Draw floor plan to scale including the targeted "zones" of dining table and / or lounge suite.

Overlay floor plan with heater radiant range to ensure the target zone will be serviced.

Typical radiant range shown (3.0 m reach and 4.0 m width) is for an outdoor area with a roof and closed in on 3 sides.

For an outdoor area with no roof and open on all sides, radiant range is reduced.



Electrical Requirements:

Power Supply:

Each Heliosa 2000 watt heater has a running current of 8.33 amps.
Halogen lamps have an in-rush current on start up,
allow an additional 20% capacity on circuit breaker.
For a single heater, supply power from a 16 amp circuit.
For two heaters, use individual circuits or supply both via a 20 amp circuit.

Power Connection:

We recommend heater cable be plugged into a socket to allow easy removal for cleaning or maintenance.



Power outlet to be offset from heater.

Regulations require the power outlet to be offset 200 mm away from the heater.

Heater cable should be cut to length as bundling is not permitted.



Do not bundle heater cables.

Electrical Accessories:

Timer [0-30 min]

Infresco soft start electronic timer (4 kW) :
690501



Power controllers [recommended when heaters are used indoors or enclosed outdoor areas].

Infresco Power Controller IP65 (4 kW)
Wall mount with control buttons
690505



Infresco Power Controller IP65 (6 kW)
Wall mount with control buttons
690506



Optional Remote Control [suits Infresco Power controller 4kW 690505 only]



Star Progetti Star 6 Power Controller IP65 (6 kW)
Wall mount with foggle button and remote
690351A



Star Progetti Star 7 Power Controller with Bluetooth IP65 (4.4 kW) Wall mount with remote and phone control
690356

