



PART NUMBER	RATED POWER	DIMENSIONS	WEIGHT
M-VULCAN- 6L	6000W	129 x 25.5 x 11cm	8.7kg
M-VULCAN-6S	6000W	52.5 x 42 x 11cm	7kg
M-VULCAN-12L	12000W	129 x 39 x 11cm	11.5kg
M-VULCAN-12S	12000W	87.5 x 52.5 x 11cm	12.1kg

380 – 415V 50/60Hz. Do not exceed specified voltage. Type C MCB protection required. Must be wired in Delta (i.e. phase to phase) configuration.

FEATURES AND BENEFITS

The Herschel Vulcan is designed to heat large, hard to heat spaces like workshops and warehouses. They offer considerable advantages to operators seeking alternatives to gas or convection-based heating systems:

- Vulcan provides heat exactly where and when you want it. Used to heat specific zones within a large space;
- No air movement;
- Pollution free – Vulcan does not emit any fumes and does not require additional ventilation;
- Powerful – designed for industrial use;
- Covers large areas from high installation heights.

The Vulcan provides for higher installation heights, better heat production in colder / higher altitude locations and a larger heated area. Vulcan delivers a powerful heating solution for industrial applications with a choice of ceiling or wall mounting. Available in 2 wattages, 6kW and 12kW, and both rectangular and square designs, Vulcan can be:

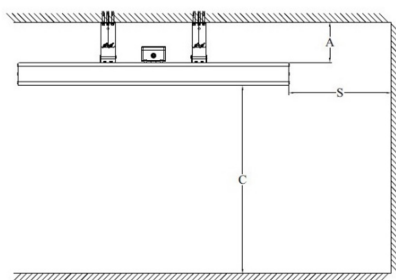
- mounted direct to the ceiling (brackets supplied) or
- ceiling suspended via wire suspension kits (an optional wire suspension kit can be purchased from a recommended supplier. Please contact Herschel for further information) or
- wall mounted (brackets supplied).

For switching the heaters on, use a 3-phase thyristor with zero cross. Herschel also offers specialised PLC controls where multiple heaters are installed (please contact Herschel for details).

Always refer to the installation instructions before installing.

Wiring suspension and ceiling fittings must be capable of holding 4x the heater weight.

DIAGRAM



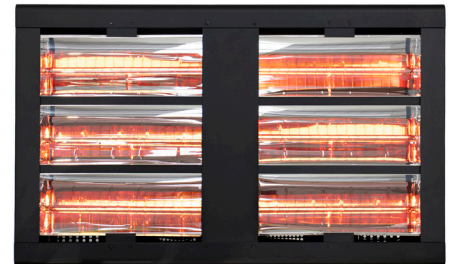
Model	Distance "A"	Distance "S"	Distance "C"
Vulcan 6L	19 cm	2m	3.5m
Vulcan 6S	19 cm	2m	3.5m
Vulcan 12L	19cm	4m	4.5m
Vulcan 12S	19cm	4m	6m

IMPORTANT

Installation must be performed by a commercial electrician. The Vulcan is not suitable for household or similar use. Contact Herschel for more information and an accurate assessment of your heating requirements.

The Herschel Vulcan is guaranteed against failure due to faulty materials or workmanship for two years. The warranty excludes lamps. In the unlikely event of failure of the unit within this time, the unit must be returned to the supplier for repair or replacement. Refer to the warranty policy on Herschel-infrared.com for more detail including exclusions. The guarantee is invalid if the correct installation instructions have not been adhered to.

Always refer to the installation instructions before installing.



Heating Element: Low glare, gold coated tungsten halogen lamps

Body: Aluminium

Useful Wavelength Range: 1µ

IP Rating: IP65

Cable Length: 2m



WALL MOUNTING DIAGRAM

