

ROTARY THREAD®

ALL-IN-ONE METRIC COIL KIT

Complete Repair and Restore Kit

This 131+1- Piece Thread Repair Tool Kit

Includes bits, taps, and inserts in the 5 most needed Metric sizes: M5, M6, M8, M10, and M12

Includes Bonus Tool!

Our RT1 & RTC1(collet)
Rotary Thread File Restore Tool



Operation Guide

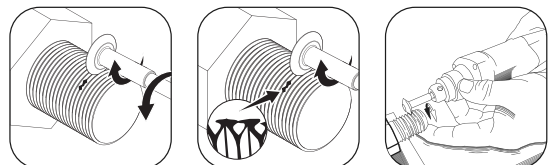
1. REMOVE: Drill out the damaged thread using the correctly sized twist drill bit provided.
2. TAPPING: Tap drilled hole using screw tap provided
3. INSTALL THE INSERT: Load thread insert into installation tool.
4. SCREW IN: Screw insert into threaded hole.
5. TANG REMOVAL: Remove the tang from the insert using the breaking pin tool.
6. DONE: Thread is repaired and ready to use.

How To Install RT1

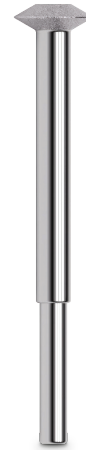
1. Center the bit in your drill jaws.
2. Snug your drill chuck down tight.
3. Start restoring your threads.

How To Use RT1

1. Using light pressure, start in a good thread.
2. Move into damaged thread.
3. Repeat as needed.



RT1



Specifications

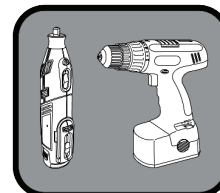
Model Number	RT1
Thread Types	Inch, Metric, Pipe, SAE, National
Threads	Male (Bolt), Female (Nut)
Works With	Dremel, Drill
Shank Size	1/8 inch (3.2 mm)
Head Diameter	3/8 inch (9 mm)
Overall Length	2 inch (50 mm)
Minimum Working ID	7/16 inch (11.1 mm)
Maximum Working OD	No Limit
Minimum Pitch	28 TPI (0.8 metric)
Thread Angle	60 degrees
RPM	Recommended 12,000 (Max 15,000)
Lube Recommend	Dry, Light Oil, or Mineral Spirits
PPE	Safety Glasses, Goggles, or Shield
Accessories	RTC1

ID = Inner Diameter • OD = Outer Diameter • RPM = Revolutions Per Minute • Metric measurements are the most actual sizes, inch measurements shown are rounded with the exception of arbor diameter • Lube will help flush area and prolong tool life • Non-flammable lubes are recommended. • PPE = Personal Protective Equipment

For safety, usage instructions, tips, videos, demos, and warranty details see additional resources online.

WARNING: This product may including Lead and/or Nickel, which are classed as P65 Warning for the state of California.
For more information: www.P65WARNINGS.ca.gov

www.rotarythread.com
PAT. US 10,183,372,B2



DREMEL / DRILL



WEAR SAFETY GOGGLES
USAR LENTES DE SEGURIDAD
PORTER DES LUNETTES DE SÉCURITÉ

ROTARYTHREAD[®]

Accessory

RTC1

Collet:

1/8 inch to 1/4 inch collet
5/8 inch length



For safety, usage instructions, tips, videos, demos, and warranty details see additional resources online.

WARNING: This product may including Lead and/or Nickel, which are classed as P65 Warning for the state of California.
For more information: www.P65WARNINGS.ca.gov

www.rotarythread.com

PAT. US 10,183,372,B2



**WEAR SAFETY
GOGGLES**

**USAR LENTES
DE SEGURIDAD**

**PORTER DES
LUNETTES DE
SÉCURITÉ**