

PRO TOOLS

RTK-STAND

# ROTARY THREAD<sup>®</sup>

## STANDARD RESTORE KIT



# The 8-Piece Standard Thread Restoration Kit

Restore ALL of your standard threads with 60-degree profiles!



- ① RT2L
- ② RTC1
- ③ RT5
- ④ RT1
- ⑤ RT4
- ⑥ RTM5
- ⑦ RT2
- ⑧ RTM5





# RT1



## Specifications

<b>Model Number</b> .....	RT1
<b>Thread Types</b> .....	Inch, Metric, Pipe, SAE, National
<b>Threads</b> .....	Male (Bolt), Female (Nut)
<b>Works With</b> .....	Dremel, Drill, Die Grinder (when used with RTC1)
<b>Shank Size</b> .....	1/8 inch (3.2 mm)
<b>Head Diameter</b> .....	3/8 inch (9 mm)
<b>Overall Length</b> .....	2 inch (50 mm)
<b>Minimum Working ID</b> .....	7/16 inch (11.1 mm)
<b>Maximum Working OD</b> .....	No Limit
<b>Minimum Pitch</b> .....	28 TPI (0.8 metric)
<b>Thread Angle</b> .....	60 degrees
<b>RPM</b> .....	Recommended 12,000 (Max 15,000)
<b>Lube Recommend</b> .....	Dry, Light Oil, or Mineral Spirits
<b>PPE</b> .....	Safety Glasses, Goggles, or Shield
<b>Accessories</b> .....	RTC1

ID = Inner Diameter • OD = Outer Diameter • RPM = Revolutions Per Minute • Metric measurements are the most actual sizes, inch measurements shown are rounded with the exception of arbor diameter • Lube will help flush area and prolong tool life • Non-flammable lubes are recommended. • PPE = Personal Protective Equipment

For safety, usage instructions, tips, videos, demos, and warranty details see additional resources online.

WARNING: This product may including Lead and/or Nickel, which are classed as P65 Warning for the state of California.  
For more information: [www.P65WARNINGS.ca.gov](http://www.P65WARNINGS.ca.gov)

[www.rotarythread.com](http://www.rotarythread.com)  
PAT. US 10,183,372,B2



DREMEL / DRILL



**WEAR SAFETY GOGGLES**  
**USAR LENTES DE SEGURIDAD**  
**PORTER DES LUNETTES DE SÉCURITÉ**



# RT2



## Specifications

<b>Model Number</b> .....	RT2
<b>Thread Types</b> .....	Inch, Metric, Pipe, SAE, National
<b>Threads</b> .....	Male (Bolt), Female (Nut)
<b>Works With</b> .....	Drill, Die Grinder
<b>Shank Size</b> .....	1/4 inch (6.4 mm)
<b>Head Diameter</b> .....	3/4 inch (19 mm)
<b>Overall Length</b> .....	2 inch (50 mm)
<b>Minimum Working ID</b> .....	5/8 inch (15.9 mm)
<b>Maximum Working OD</b> .....	No Limit
<b>Minimum Pitch</b> .....	28 TPI (0.8 metric)
<b>Thread Angle</b> .....	60 degrees
<b>RPM</b> .....	Recommended 12,000 (Max 15,000)
<b>Lube Recommend</b> .....	Dry, Light Oil, or Mineral Spirits
<b>PPE</b> .....	Safety Glasses, Goggles, or Shield

ID = Inner Diameter • OD = Outer Diameter • RPM = Revolutions Per Minute • Metric measurements are the most actual sizes, inch measurements shown are rounded with the exception of arbor diameter • Lube will help flush area and prolong tool life • Non-flammable lubes are recommended. • PPE = Personal Protective Equipment

For safety, usage instructions, tips, videos, demos, and warranty details see additional resources online.

WARNING: This product may including Lead and/or Nickel, which are classed as P65 Warning for the state of California.  
For more information: [www.P65WARNINGS.ca.gov](http://www.P65WARNINGS.ca.gov)

[www.rotarythread.com](http://www.rotarythread.com)  
PAT. US 10,183,372,B2



GRINDER / DRILL



**WEAR SAFETY GOGGLES**  
**USAR LENTES DE SEGURIDAD**  
**PORTER DES LUNETTES DE SECURITE**





# RT2L



## Specifications

<b>Model Number</b> .....	RT2L
<b>Thread Types</b> .....	Inch, Metric, Pipe, SAE, National
<b>Threads</b> .....	Male (Bolt), Female (Nut)
<b>Works With</b> .....	Drill, Die Grinder
<b>Shank Size</b> .....	1/4 inch (6.4 mm)
<b>Head Diameter</b> .....	3/4 inch (19 mm)
<b>Overall Length</b> .....	4 inch (100 mm)
<b>Minimum Working ID</b> .....	5/8 inch (15.9 mm)
<b>Maximum Working OD</b> .....	No Limit
<b>Minimum Pitch</b> .....	28 TPI (0.8 metric)
<b>Thread Angle</b> .....	60 degrees
<b>RPM</b> .....	Recommended 12,000 (Max 15,000)
<b>Lube Recommend</b> .....	Dry, Light Oil, or Mineral Spirits
<b>PPE</b> .....	Safety Glasses, Goggles, or Shield

ID = Inner Diameter • OD = Outer Diameter • RPM = Revolutions Per Minute • Metric measurements are the most actual sizes, inch measurements shown are rounded with the exception of arbor diameter • Lube will help flush area and prolong tool life • Non-flammable lubes are recommended. • PPE = Personal Protective Equipment

For safety, usage instructions, tips, videos, demos, and warranty details see additional resources online.

WARNING: This product may including Lead and/or Nickel, which are classed as P65 Warning for the state of California.  
For more information: [www.P65WARNINGS.ca.gov](http://www.P65WARNINGS.ca.gov)

[www.rotarythread.com](http://www.rotarythread.com)  
PAT. US 10,183,372,B2



GRINDER / DRILL



**WEAR SAFETY GOGGLES**  
**USAR LENTES DE SEGURIDAD**  
**PORTER DES LUNETTES DE SÉCURITÉ**



# RT4



## Specifications

<b>Model Number</b> .....	RT4
<b>Thread Types</b> .....	Inch, Metric, Pipe, SAE, National
<b>Threads</b> .....	Male (Bolt), Female (Nut)
<b>Works With</b> .....	Drill, Die Grinder
<b>Shank Size</b> .....	1/4 inch (6.4 mm)
<b>Head Diameter</b> .....	1-5/8 inch (40 mm)
<b>Mandrel Used</b> .....	RTM5
<b>Thickness</b> .....	0.118 inch (3 mm)
<b>Minimum Working ID</b> .....	1-3/4 inch (42 mm)
<b>Maximum Working OD</b> .....	No Limit
<b>Minimum Pitch</b> .....	28 TPI (0.8 metric)
<b>Thread Angle</b> .....	60 degrees
<b>RPM</b> .....	Recommended 12,000 (Max 15,000)
<b>Lube Recommend</b> .....	Dry, Light Oil, or Mineral Spirits
<b>PPE</b> .....	Safety Glasses, Goggles, or Shield
<b>Accessories</b> .....	RTC1

ID = Inner Diameter • OD = Outer Diameter • RPM = Revolutions Per Minute • Metric measurements are the most actual sizes, inch measurements shown are rounded with the exception of arbor diameter • Lube will help flush area and prolong tool life • Non-flammable lubes are recommended. • PPE = Personal Protective Equipment

For safety, usage instructions, tips, videos, demos, and warranty details see additional resources online.

WARNING: This product may including Lead and/or Nickel, which are classed as P65 Warning for the state of California.  
For more information: [www.P65WARNINGS.ca.gov](http://www.P65WARNINGS.ca.gov)

[www.rotarythread.com](http://www.rotarythread.com)  
PAT. US 10,183,372,B2



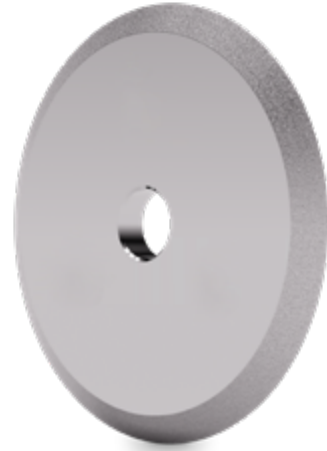
GRINDER / DRILL



**WEAR SAFETY GOGGLES**  
**USAR LENTES DE SEGURIDAD**  
**PORTER DES LUNETTES DE SÉCURITÉ**



# RT5



## Specifications

<b>Model Number</b> .....	RT5
<b>Thread Types</b> .....	Inch, Metric, Pipe, SAE, National
<b>Threads</b> .....	Male (Bolt), Female (Nut)
<b>Works With</b> .....	Drill, Die Grinder
<b>Shank Size</b> .....	1/4 inch (6.4 mm)
<b>Head Diameter</b> .....	2 inch (50 mm)
<b>Mandrel Used</b> .....	RTM5
<b>Thickness</b> .....	0.315 inch (4 mm)
<b>Minimum Working ID</b> .....	2-1/8 inch (54 mm)
<b>Maximum Working OD</b> .....	No Limit
<b>Minimum Pitch</b> .....	20 TPI (0.8 metric)
<b>Thread Angle</b> .....	60 degrees
<b>RPM</b> .....	Recommended 12,000 (Max 15,000)
<b>Lube Recommend</b> .....	Dry, Light Oil, or Mineral Spirits
<b>PPE</b> .....	Safety Glasses, Goggles, or Shield

ID = Inner Diameter • OD = Outer Diameter • RPM = Revolutions Per Minute • Metric measurements are the most actual sizes, inch measurements shown are rounded with the exception of arbor diameter • Lube will help flush area and prolong tool life • Non-flammable lubes are recommended. • PPE = Personal Protective Equipment

For safety, usage instructions, tips, videos, demos, and warranty details see additional resources online.

WARNING: This product may including Lead and/or Nickel, which are classed as P65 Warning for the state of California.  
For more information: [www.P65WARNINGS.ca.gov](http://www.P65WARNINGS.ca.gov)

[www.rotarythread.com](http://www.rotarythread.com)  
PAT. US 10,183,372,B2



GRINDER / DRILL



**WEAR SAFETY GOGGLES**  
**USAR LENTES DE SEGURIDAD**  
**PORTER DES LUNETTES DE SECURITE**

# ROTARYTHREAD®

## Accessory

# RTC1

### Collet:

---

1/8 inch to 1/4 inch collet  
5/8 inch length



For safety, usage instructions, tips, videos, demos, and warranty details see additional resources online.

WARNING: This product may including Lead and/or Nickel, which are classed as P65 Warning for the state of California.  
For more information: [www.P65WARNINGS.ca.gov](http://www.P65WARNINGS.ca.gov)

[www.rotarythread.com](http://www.rotarythread.com)  
PAT. US 10,183,372,B2



**WEAR SAFETY  
GOGGLES**  
**USAR LENTES  
DE SEGURIDAD**  
**PORTER DES  
LUNETTES DE  
SÉCURITÉ**



# ROTARYTHREAD®

## Accessory

# RTM5

### Mandrel:

---

0.472 inch (12 mm) Body Diameter x 2 inches (51 mm) Long  
1/4 inch (6.35 mm) Arbor Diameter



For safety, usage instructions, tips, videos, demos, and warranty details see additional resources online.

WARNING: This product may including Lead and/or Nickel, which are classed as P65 Warning for the state of California.  
For more information: [www.P65WARNINGS.ca.gov](http://www.P65WARNINGS.ca.gov)

[www.rotarythread.com](http://www.rotarythread.com)  
PAT. US 10,183,372,B2



**WEAR SAFETY  
GOGGLES**  
**USAR LENTES  
DE SEGURIDAD**  
**PORTER DES  
LUNETTES DE  
SÉCURITÉ**

## Connect with us today!



[support@rotarythread.com](mailto:support@rotarythread.com)



<https://rotarythread.com>



[@rotarythreadfile](https://www.instagram.com/rotarythreadfile)



[@rotarythread](https://www.facebook.com/rotarythread)