

Coast Spas Hot Tubs

PRE-DELIVERY GUIDE



COAST SPAS GLOBAL FAMILY

Welcome to Coast Spas! We've been creating innovative and customer-pleasing hot tubs and swim spas for almost 30 years. Our Canadian based company is located in Langley, British Columbia, and we craft high-quality hot tubs and swim spas in our state-of-the-art manufacturing facility. As one of the leading manufacturers globally, we're proud to export our products to over 50 countries worldwide. We've earned numerous awards, including the prestigious Consumers Digest Best Buy award, thanks to our focus on innovation and design.

We understand that each of our customers has unique needs and desires, which is why we've designed our hot tubs and swim spas to meet a variety of needs, from relaxation and stress relief to therapy and rehabilitation. Our products can improve circulation, skin health, and immune systems while promoting weight loss, flexibility, and better sleep. Our hot tubs and swim spas are perfect for year-round use, personal retreats, socializing, and entertaining.

Our hot tubs and swim spas are built with cutting-edge technology and unparalleled quality, which has earned us the reputation of being the "World's Best Built Spas". Our mission is to provide the ultimate hot tub and swim spa experience worldwide.

We're also committed to contributing to a sustainable environment. Our products are not only elegant and functional, but they're also energy efficient. We use energy-efficient manufacturing processes and materials to reduce energy consumption and minimize our carbon footprint.

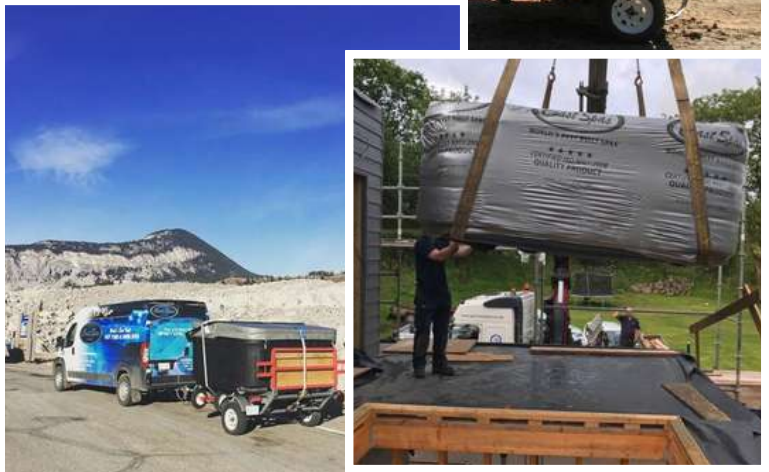
Thank you for choosing Coast Spas.



COAST SPAS EASY DELIVERY!



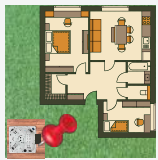
Our Coast Spas Hot Tub delivery is described by our owners as easy, quick, and completely stress-free!



4 STEPS TO RELAXATION



Site preparation for a Coast Spas hot tub is essential for reasons such as establishing a stable foundation, facilitating proper electrical wiring connection, and ensuring a safe and accessible pathway for placing the Coast Spas hot tub in the desired location or area. Each of these factors contributes to the overall functionality, safety, and longevity of the Coast Spas hot tub installation.



Deciding on Where to Place your new Hot Tub

Site preparation for a hot tub is essential for reasons such as establishing a stable foundation, facilitating proper electrical wiring connection, and ensuring a safe and accessible pathway for placing the hot tub in the desired location or area. Each of these factors contributes to the overall functionality, safety, and longevity of the hot tub installation.



Laying Foundation

Selecting the ideal foundation, whether it's a reinforced patio, sturdy deck, or solid ground in the backyard, is essential for ensuring stability and longevity when installing a hot tub.



Electrical Requirements

It is mandatory to enlist the services of an electrician when installing a hot tub to ensure compliance with specific electrical requirements, including safe and proper wiring, dedicated circuits, and adherence to local electrical codes.



Planning Delivery Route

Careful planning of the delivery route is essential for installing a hot tub, considering factors such as access points and pathway dimensions. Adequate access is imperative for the smooth and efficient transportation of the hot tub to its designated installation area.

LAYING FOUNDATION



Establishing a flat and stable foundation for your hot tub is imperative to ensure longevity and optimal performance. This foundational support prevents structural strain, promotes even weight distribution, and enhances the overall safety and comfort of the hot tub experience, offering lasting enjoyment for users.

Consider one of these straightforward methods to ready the ground for your hot tub:



Concrete Pad



Wood Decking

Your new portable Coast Spas hot tub must be placed on a firm, flat, and level surface, so that the weight is supported uniformly. We recommend no less than a 3" (93 mm) thick concrete slab. Wood decking or balconies must be constructed to support 150 pounds per square foot (730 kg/m²).

NOTE: Damage caused by alternate decking methods may void the spa warranty. Contact Coast Spas if you have any questions regarding spa location and placement.

ELECTRICAL REQUIREMENTS

All self-contained spas use 120VAC or 240VAC electrical spa packs. These instructions describe the only acceptable electrical wiring procedures. Spas wired in any other way will void your warranty and may result in serious injury. All installations should be completed by a certified electrician. Failure to comply with state and local codes may result in fire or personal injury and will be the sole responsibility of the spa owner.



Electrical conduit access (oversize) is from the bottom right of the tub by the equipment closure. Make sure to plan electric setup according to where you would place the hot tub.



120VAC

This requires an isolated 15 Amp circuit breaker. This needs to be an isolated circuit with no other appliances or lights on this circuit at any time. Extension cords are not to be used in conjunction with the operations of the spa. Low voltage damage could result, and this is not covered by warranty.

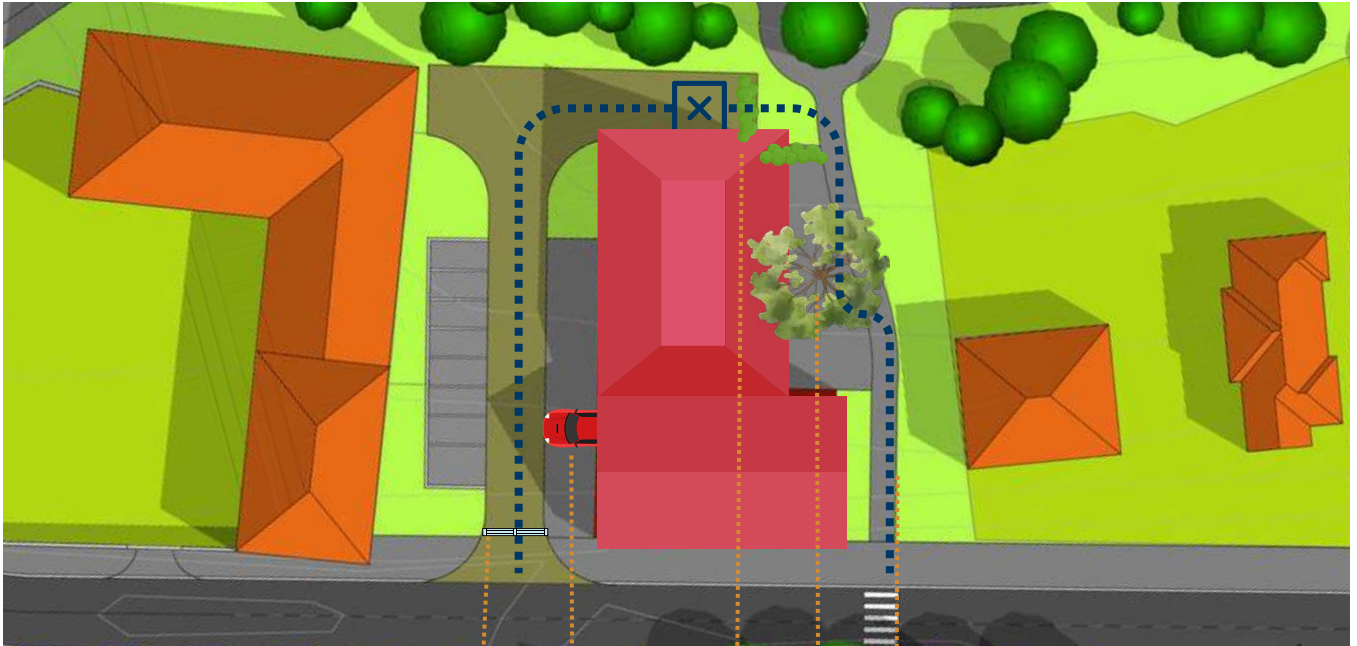
240VAC

Depending on the model of spa, it will require either a 40 Amp, 50 Amp, or 60 Amp dedicated circuit breaker, GFCI, with the proper wire size based on the length of the run. The electrical circuit must be installed by a certified electrician and approved by a local building or electrical inspector.

Warning: Do not attempt service of this control system. Contact your dealer or service organization for assistance. Follow all owner's manual power connection instructions. Installation must be performed by a licensed electrician and all grounding connections must be properly installed. Disconnect the electric power before servicing. Keep the access door closed.

PLANNING DELIVERY ROUTE

Take a moment to create a brief map for the delivery team bringing your Coast Spas hot tub. Such a map is invaluable not only for planning the delivery route but also for ensuring that your instructions are followed upon arrival. In cases where the recipient may not be present during delivery, a map becomes crucial in guiding our delivery team to the correct location and actions.



Gate Measurement for clearance

Recreational Vehicles and cars in driveway

Ensure sidewalks are free of objects and clutter

Measure to see if shrubs or trees are an obstacle

Check for uneven ground or slippery slopes

EMPLOY THIS STRAIGHTFORWARD CHECKLIST TO ORGANIZE YOUR ROUTE EFFECTIVELY!

- | | |
|--|--|
| <input type="checkbox"/> automobiles / recreational vehicles | <input type="checkbox"/> trees / foliage / shrubs |
| <input type="checkbox"/> gutter / fascia / soffit overhang | <input type="checkbox"/> patio furniture / deck chairs |
| <input type="checkbox"/> electrical / gas meter equipment | <input type="checkbox"/> fences or narrow gates/ retaining Walls |
| <input type="checkbox"/> doghouse / playhouse | <input type="checkbox"/> gravel, rocks or wood piles |
| <input type="checkbox"/> stairs / steps / railings | <input type="checkbox"/> adequate access to wood decks |
| <input type="checkbox"/> uneven ground | <input type="checkbox"/> door openings / Overhead clearance |
| <input type="checkbox"/> slippery slope or path | <input type="checkbox"/> sheds or built-in structures |

PROVIDE SPECIAL MEASUREMENTS: Gate width: _____ Stair width: _____

Note: If there isn't sufficient space for a dolly, alternative options such as a crane or, in exceptional cases, a helicopter may be necessary for transportation.

HOT TUB DIMENSIONS

MODEL	SEATING CAPACITY	DIMENSIONS (cm/in)	WATER CAPACITY (L/gal)	FILLED WEIGHT (kg/lbs)	DRY WEIGHT (kg/lbs)
Omega Bench	4-5 (4 Active Seats + 1 Cooling Seat)	168 x 212 x 92 cm / 66" x 83.5" x 36"	930 L / 246 gal	1224 kg / 2698 lbs	294 kg / 647 lbs
Omega Bench ULP - Patio	4-5 (4 Active Seats + 1 Cooling Seat)	168 x 212 x 77 cm / 66" x 83.5" x 30"	880 L / 232 gal	1160 kg / 2560 lbs	280 kg / 617 lbs
Omega Bench HP - Classic	4-5 (4 Active Seats + 1 Cooling Seat)	168 x 212 x 101 cm / 66" x 83.5" x 40"	996 L / 263 gal	1290 kg / 2844 lbs	294 kg / 647 lbs
Omega Bench Curve	4-5 (4 Active Seats + 1 Cooling Seat)	168 x 212 x 101 (119.5 back) cm / 66" x 83.5" x 40" (47" back)	996 L / 263 gal	1303 kg / 2904 lbs	307 kg / 677 lbs
Omega Lounge	3 (2 Active Seats + Reversible Lounger)	168 x 212 x 92 cm / 66" x 83.5" x 36"	890 L / 235 gal	1184 kg / 2610 lbs	294 kg / 647 lbs
Omega Lounge ULP - Patio	3 (2 Active Seats + Reversible Lounger)	167.5 x 212 x 77 cm / 66" x 83.5" x 30"	845 L / 224 gal	1125 kg / 2480 lbs	280 kg / 617 lbs
Omega Lounge HP - Classic	3 (2 Active Seats + Reversible Lounger)	167.5 x 212 x 101.5 cm / 66" x 83.5" x 40"	946 L / 250 gal	1240 kg / 2734 lbs	294 kg / 647 lbs
Omega Lounge Curve	3 (2 Active Seats + Reversible Lounger)	168 x 212 x 101 (119.5 back) cm / 66" x 83.5" x 40" (47" back)	946 L / 250 gal	1240 kg / 2734 lbs	294 kg / 647 lbs
Element Bench	6 (6 Active Seats + 2 Cooling Seats)	212 x 212 x 92 cm / 83.5" x 83.5" x 36"	1268 L / 335 gal	1688 kg / 3721 lbs	420 kg / 925 lbs
Element Bench HP - Classic	6 (6 Active Seats + 2 Cooling Seats)	212 x 212 x 101.5 cm / 83.5" x 83.5" x 40"	1268 L / 335 gal	1688 kg / 3721 lbs	420 kg / 925 lbs
Element Bench Curve	6 (6 Active Seats + 2 Cooling Seats)	212 x 212 x 101.5 (119.5 back) cm / 83.5" x 83.5" x 40" (47" back)	1268 L / 335 gal	1688 kg / 3721 lbs	420 kg / 925 lbs
Element Lounge	5 (4 Active Seats + 1 Lounger and a cooling seat)	212 x 212 x 92 cm / 83.5" x 83.5" x 36"	1210 L / 320 gal	1630 kg / 3594 lbs	420 kg / 925 lbs
Element Lounge HP - Classic	5 (4 Active Seats + 1 Lounger and a cooling seat)	212 x 212 x 101.5 cm / 83.5" x 83.5" x 40"	1210 L / 320 gal	1630 kg / 3594 lbs	420 kg / 925 lbs
Element Lounge Curve	5 (4 Active Seats + 1 Lounger and a cooling seat)	212 x 212 x 101.5 (119.5 back) cm / 83.5" x 83.5" x 40" (47" back)	1210 L / 320 gal	1630 kg / 3594 lbs	420 kg / 925 lbs
Apex Bench	7 (7 Active Seats + 1 Cooling Seat)	234 x 234 x 92 cm / 92" x 92" x 36"	1552 L / 410 gal	2224 kg / 4903 lbs	672 kg / 1482 lbs
Apex Bench HP - Classic	7 (7 Active Seats + 1 Cooling Seat)	234 x 234 x 101.5 cm / 92" x 92" x 40"	1552 L / 410 gal	2224 kg / 4903 lbs	672 kg / 1482 lbs
Apex Bench Curve	7 (7 Active Seats + 1 Cooling Seat)	234 x 234 x 101.5 (119.5 back) cm / 92" x 92" x 40" (47" back)	1552 L / 410 gal	2224 kg / 4903 lbs	672 kg / 1482 lbs
Apex Lounge	6 (5 Active Seats + 1 Lounger and a cooling seat)	234 x 234 x 92 cm / 92" x 92" x 36"	1496 L / 395 gal	2168 kg / 4780 lbs	672 kg / 1482 lbs
Apex Lounge HP - Classic	6 (5 Active Seats + 1 Lounger and a cooling seat)	234 x 234 x 101.5 cm / 92" x 92" x 40"	1496 L / 395 gal	2168 kg / 4780 lbs	672 kg / 1482 lbs
Apex Lounge Curve	6 (5 Active Seats + 1 Lounger and a cooling seat)	234 x 234 x 101.5 (119.5 back) cm / 92" x 92" x 40" (47" back)	1496 L / 395 gal	2168 kg / 4780 lbs	672 kg / 1482 lbs
Freedom Bench	7 (7 Active Seats + 1 Cooling Seat)	234 x 234 x 101.5 cm / 92" x 92" x 40"	1666 L / 440 gal	2251 kg / 4963 lbs	585 kg / 1291 lbs
Mirage	8 (7 Active Seats + 1 Lounger)	335 x 234 x 101.5 cm / 132" x 92" x 40"	2234 L / 590 gal	3322 kg / 7324 lbs	748 kg / 1649 lbs
Mirage Curve	8 (7 Active Seats + 1 Lounger)	335 x 234 x 101.5 (119.5 back) cm / 132" x 92" x 40" (47" back)	2234 L / 590 gal	3322 kg / 7324 lbs	748 kg / 1649 lbs
Cascade II	6 (5 Active Seats + 1 Lounger and a cooling seat)	233.7 x 256.7 x 79 (119.5 back) cm / 92" x 101" x 31" (47" back)	1817 L / 480 gal	2487 kg / 5483 lbs	670 kg / 1477 lbs
Purfikt	8 Active Seats	292 x 234 x 112 (124.5 back) cm / 115" x 92" x 44" (47" back)	1995 L / 527 gal	2610 kg / 5754 lbs	592 kg / 1305 lbs
2Purfikt Traditional	3 (2 Active Seats + 1 Lounger)	212 x 151 x 101.5 cm / 83.5" x 59.5" x 40"	880 L / 232 gal	1220 kg / 2690 lbs	340 kg / 750 lbs
2Purfikt Infinity	3 (2 Active Seats + 1 Lounger)	212 x 181.5 x 101.5 cm / 83.5" x 71.5" x 40"	1155 L / 305 gal	1541 kg / 3340 lbs	386 kg / 850 lbs

HOT TUBS AMP CHART

Series	Model	Pumps	Voltage	Frequency	Amp Draw	Breaker Size	Wiring
Patio	Omega L/B	1x1.5HP	120V	60 Hz	12	15	GFCI Breaker & Cord Included
Patio	Element L/B	1x1.5HP	120V	60 Hz	12	15	GFCI Breaker & Cord Included
Patio	Omega L/B	1x1.5HP	240V	60 Hz	20	25	3 Wire GFCI Required
Patio	Element L/B	1x1.5HP	240V	60 Hz	20	25	3 Wire GFCI Required
Oasis	Omega L/B	1x1.5HP	120V	60 Hz	12	15	GFCI Breaker & Cord Included
Oasis	Omega L/B	1x1.5HP	240V	60 Hz	20	25	3 Wire GFCI Required
Oasis	Element L/B	1 x 3HP & 1 1.5HP	240V	60 Hz	32	40	3 Wire GFCI Required
Oasis	Freedom	1 x 3HP & 1 x 1.5HP	240V	60 Hz	32	40	3 Wire GFCI Required
Oasis	Apex L/B	1 x 3HP & 1 x 1.5HP	240V	60 Hz	32	40	3 Wire GFCI Required
Oasis	Mirage L	1 x 3HP & 1 x 1.5HP	240V	60 Hz	32	40	3 Wire GFCI Required
Coast Freshe	Cold Plunge/Hot Soak	Chiller	120V	60 Hz	12	15	GFCI Breaker & Cord Included
Classic	Omega L/B	1 x 3HP	240V	60 Hz	32	40	3 Wire GFCI Required
Classic	Element L/B	2 x 3HP	240V	60 Hz	40	50	3 Wire GFCI Required
Classic	Apex L/B	2 x 3HP	240V	60 Hz	40	50	3 Wire GFCI Required
Classic	Mirage L	2 x 3HP	240V	60 Hz	40	50	3 Wire GFCI Required
Elite	Element L/B	2 x 4 HP	240V	60 Hz	40	50	3 Wire GFCI Required
Elite	Apex L/B	2 x 4 HP	240V	60 Hz	40	50	3 Wire GFCI Required
Elite	Omega L/B	2 x 4 HP	240V	60 Hz	40	50	3 Wire GFCI Required
Elite	Mirage L	2 x 4 HP	240V	60 Hz	40	50	3 Wire GFCI Required
Luxury	Element L/B	1 x 5 HP & 2 x 4 HP	240V	60 Hz	48	60	3 Wire GFCI Required
Luxury	Apex L/B	1 x 5 HP & 2 x 4 HP	240V	60 Hz	48	60	3 Wire GFCI Required
Luxury	Mirage L	1 x 5 HP & 2 x 4 HP	240V	60 Hz	48	60	3 Wire GFCI Required
Opulence	Element L/B	1 x 5 HP & 2 x 4 HP	240V	60 Hz	48	60	3 Wire GFCI Required
Opulence	Apex L/B	1 x 5 HP & 2 x 4 HP	240V	60 Hz	48	60	3 Wire GFCI Required
Infinity	Purfikt	1 x 5 HP & 1 x 4 HP	240V	60 Hz	40	50	3 Wire GFCI Required
Infinity	2 Purfikt	2 x 4 HP	240V	60 Hz	40	50	3 Wire GFCI Required
Traditional	2 Purfikt	2 x 4 HP	240V	60 Hz	40	50	3 Wire GFCI Required
Infinity	Cascade 2	1 x 5 HP & 2 x 4 HP	240V	60 Hz	48	60	3 Wire GFCI Required
Auxiliary Heater	*	*	240V	60 Hz	23	30	3 Wire GFCI Required

Knowing the amp and voltage information of a hot tub prior to installation is critical for ensuring electrical safety, proper installation, compliance with regulations, avoiding circuit overloads, preserving equipment longevity, and making informed decisions about energy efficiency. It contributes to a safe and trouble-free experience with your hot tub.

POST-DELIVERY CHECKLIST

Warranty registration for your Coast Spas hot tub is crucial as it ensures prompt and efficient support in case of any issues, safeguarding your investment. Additionally, it enables the manufacturer to provide you with important product updates, maintenance tips, and ensures you receive the full benefits of the warranty coverage.



A comprehensive start-up guide for your Coast Spas hot tub is essential for a seamless and enjoyable experience. It provides step-by-step instructions on initial setup, water chemistry, and equipment operation, ensuring that you maximize the benefits of your hot tub while maintaining optimal performance. Following the start-up guide meticulously not only facilitates a smooth introduction to your spa but also plays a crucial role in extending the lifespan of the equipment and enhancing overall user satisfaction.

Start-Up Guides

[Patio Series](#)

[Oasis Series](#)

[Classic Series](#)

[Elite Series](#)

[Luxury Series](#)

Owner's Manuals

Owner's manuals serve as indispensable tools for new spa owners, offering crucial information on installation, operation, and maintenance. They provide step-by-step guidance on setting up the spa, ensuring correct electrical connections, and understanding water chemistry. With comprehensive details on equipment operation, safety guidelines, and troubleshooting tips, owner's manuals empower users to make informed decisions, address issues efficiently, and optimize the spa's performance. These manuals not only enhance the overall user experience but also contribute significantly to the longevity of the spa, helping owners enjoy their investment for years while ensuring safety and adherence to proper maintenance practices.

[Owners Manuals](#)

CHEMICALS & ACCESSORIES



Coast Spas makes great hot tubs and swim spas, and we also offer chemicals that do three things: clean the water, balance the water, and keep it clear. These chemicals are important to take care of your hot tub and swim spas and make them last longer. They are specially made to work with Coast Spas hot tubs and swim spas, so you can trust that they'll do the job right. By using Coast Spas Chemical program, you can ensure the water stays crystal clear, keeping your hot tub and swim spa in great shape for longer. Coast Spas chemicals are made with high quality ingredients and not using Coast Spas chemicals may impact your Coast Spas warranty.

Introducing

All-Weather Woodgrain Steps

Charcoal Diftwood Walnut



Experience the convenience of Coast Spas' Effortless Cover Lifters, designed for easy and seamless hot tub cover handling.



Manual Lifter



Hydraulic Lifter

Important Note: Please do not leave the spa dry without a cover or exposed to prolonged direct sunlight. Use the straps and clip tie downs to secure the cover when not in use. This will help to discourage unsupervised children from entering the Spa and keep the Spa cover secure in high-wind conditions. All covers are constructed with tie-down straps and fasteners that are triple reinforced. All covers meet or exceeds all safety requirements and carries the ASTM Certification of Product Compliance.

FOLLOW US!



Coastspas



Coast_spas



Coast spas



Coastspas



Coastspas



©Coast Spas Manufacturing Inc. All rights reserved. Coast Spas®, World's Best Built Spas®, Built to Last®, Where Stress is Water Soluble®, Water Diversion Blade®, AT THE END of the day®, Crystal Clear Purification Chamber®, EcoClean®, Cyclonic Filtration System®, SOUNDWAVES™, Extreme®, Wellness Spa®, Coast Connect® are the registered trademarks of Coast Spas® Manufacturing Inc. All other brands, product names, company names, trademarks, trade names and service marks used are the property of their respective owners. Due to our continuous improvement programs, Coast Spas may make product modifications and enhancements. Specifications may change without notice. International products may be configured differently to meet local electrical requirements. Dimensions are approximate. The Product pictured may include options beyond standard equipment. Check with your local dealer for the most current product specifications.