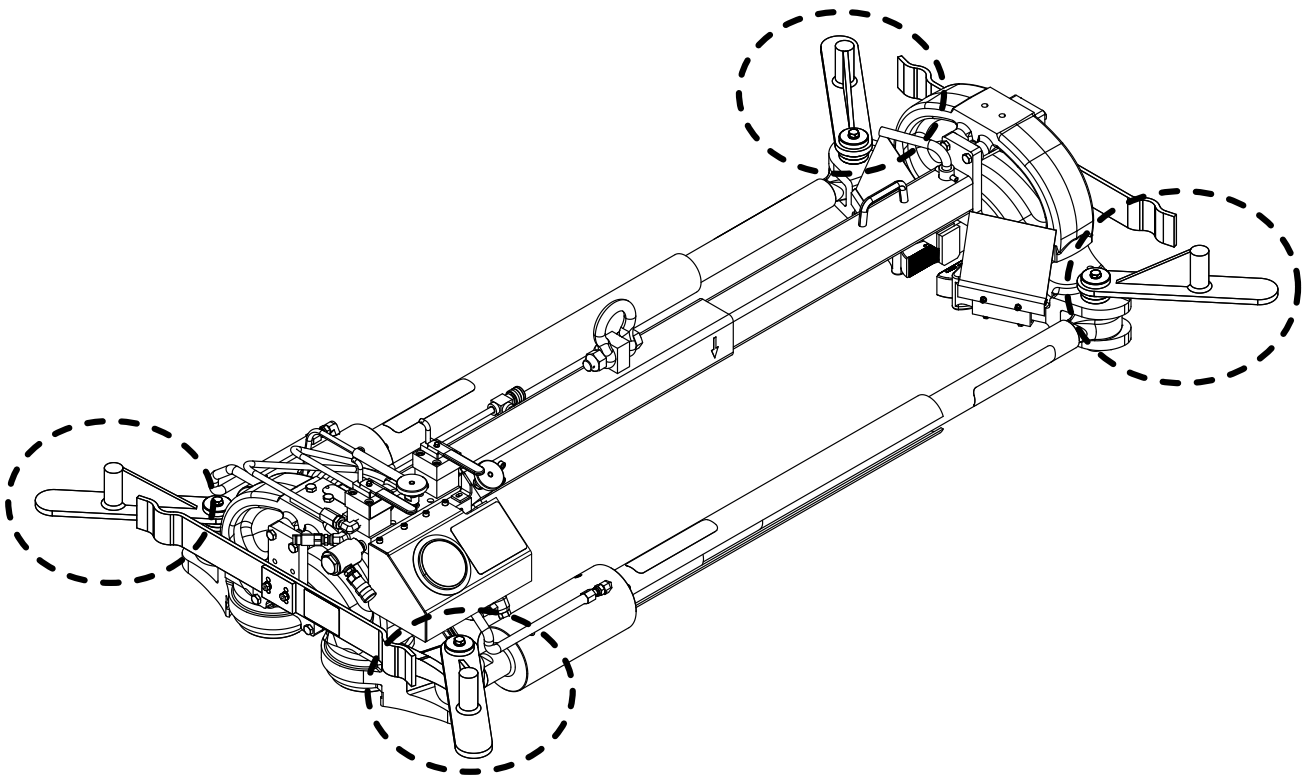
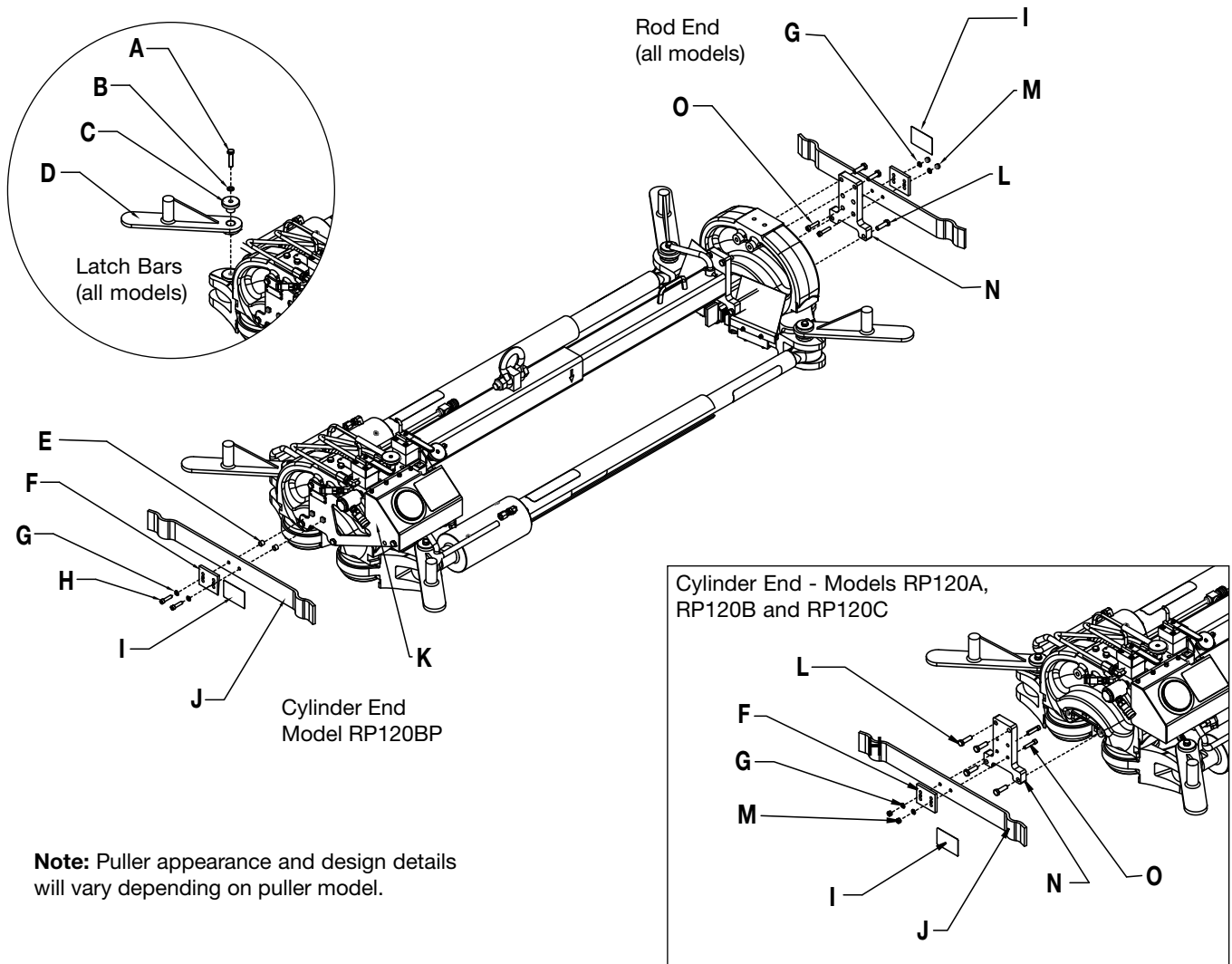


L4023 Rev. A 06/12

**IMPORTANT:** These service instructions are intended for use by qualified personnel at Enerpac Authorized Service Centers. Product users should refer to the rail puller instruction sheet for complete installation, operation and maintenance information. Enerpac instruction sheets are available online at [www.enerpac.com](http://www.enerpac.com).



**Figure 1, Rail Puller Brake Components**



**Note:** Puller appearance and design details will vary depending on puller model.

**Parts List - Rail Puller Brake Components (Refer to Figure 1)**

ITEM	DESCRIPTION	PART NUMBER	QUANTITY USED		ITEM	DESCRIPTION	PART NUMBER	QUANTITY USED	
			RP120BP	RP120A RP120B RP120C				RP120BP	RP120A RP120B RP120C
A	★ Bolt, Hex Head, 1/2-13 x 2.25"	46174	4	4	I	★ Decal, Safety Warning	46316	2	2
B	★ Lockwasher, 1/2"	93946	4	4	J	★ Safety Spring	46005	2	2
C	★ Latch Bar Spacer	46006	4	4	K	▲ Mounting Bracket, Style I	DS1975111	1	0
D	★ Latch Bar	46004	4	4	L	▲ Bolt	44630	4	8
E	★ Spacer, Safety Spring	DS2068186	2	0	M	★ Hex Nut, 3/8"	93874P	2	4
F	★ Spring Plate	46177	2	2	N	▲ Mounting Bracket, Style II	44579	1	2
G	★ Lockwasher	C432108	4	4	O	★ Capscrew, Socket Head, 3/8-16 x 1-3/4"	84692E	2	4
H	★ Capscrew, Socket Head, 3/8-16 x 1-1/2"	B1073028X	2	0					

★ Item included in Rail Puller Brake Kit 18904.

Kit is usable for all puller models - includes highest quantity shown for each kit item listed above.

▲ Order item separately if needed (not included in kit).

## 1.0 REQUIRED TOOLS AND EQUIPMENT

- ✓ Safety glasses
- ✓ 5/16 inch Allen wrench
- ✓ 9/16 inch open-end wrench
- ✓ 3/4 inch open-end wrench
- ✓ Anti-seize compound
- ✓ Work gloves
- ✓ Rail Puller Brake Kit, Enerpac part number 18904

## 2.0 INSTALLATION INSTRUCTIONS

**IMPORTANT:** Be sure that swing arms are in the open position and off the rail. This will provide work room for brake kit installation.



**WARNING:** Disconnect hydraulic supply lines and relieve any trapped pressure before beginning the following procedures. Be sure that pressure gauge indicates zero (0) psi/bar.

### 2.1 Latch Bar installation (all models)

Repeat the following steps to install each of the four latch bars. See Figure 1.

1. Place spacer (C) into hole on latch bar (D).
2. Place lockwasher (B) on bolt (A).
3. Position latch bar (D) on top of swing arm clevis pin. Align bolt holes.
4. Using a 3/4 inch open-end wrench, tighten bolt (A) to 250 in-lbs [28,2 Nm].

**Note:** It may be necessary to hold the swing arm clevis pin with a pipe wrench (or other self-gripping wrench) to achieve the specified torque in step 4.

### 2.2 Safety Spring Installation - Cylinder End (Model RP120BP Only)

Install safety spring components on cylinder end of puller model RP120BP as described in the following steps Refer to Figure 1 for exploded view.

1. Place lockwashers (G) on capscrews (H).
2. Insert ends of capscrews (H) through the **middle** pair of bolt holes in the spring washer plate (F). See Figure 3.
3. Slide capscrews (H) through holes in safety spring (J).

**IMPORTANT:** Safety spring (J) must be oriented so that the “U” shaped grooves face inward (**toward** the puller) when parts are assembled.

4. Place a spacer (E) on each capscrew (H).
5. While holding all parts together as an assembly, position the safety spring (J) in front of the mounting bracket (K).
6. Thread ends of capscrews (H) into welded nuts on mounting bracket (K).
7. Using a 5/16 inch Allen wrench, torque each capscrew (H) to 180 in-lbs [20,3 Nm].
8. Affix safety warning decal (I) to safety spring (J).

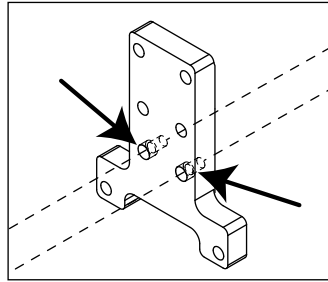


Figure 2, Bottom Mounting Holes (item N)

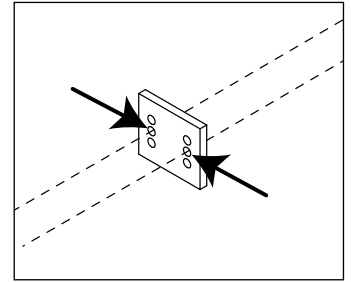


Figure 3, Middle Bolt Holes (item F)

### 2.3 Safety Spring Installation - Cylinder End (Models RP120A, RP120B and RP120C)

Install safety spring components on cylinder end of puller model RP120A, RP120B or RP120C as described in the following steps. Refer to Figure 1 for exploded view.

1. Using a 3/4 inch wrench, remove the four bolts (L) securing the mounting bracket (N) to the puller.
2. Slide the two capscrews (O) through the **bottom** pair of mounting holes in mounting bracket (N). See Figure 2.

**IMPORTANT:** To ensure adequate screw length, be sure that capscrews (O) are inserted on the counterbored side of mounting bracket (N).

3. Slide the two capscrews (O) through the bolt holes in the safety spring (J) and the **middle** pair of bolt holes in the spring washer plate (F). See Figure 3.

**IMPORTANT:** Safety spring (J) must be oriented so that the “U” shaped grooves face inward (**toward** the puller) when parts are assembled.

4. Install a lockwasher (G) and nut (M) on each capscrew (O). Using a 9/16 inch open-end wrench and 5/16 inch Allen wrench, torque each nut (M) and capscrew (O) to 180 in-lbs [20,3 Nm].
5. Using a 3/4 inch open-end wrench, secure the mounting bracket (N) to the puller by reinstalling the four bolts (L). Torque to 350 in-lbs [39,5 Nm].
6. Affix safety warning decal (I) to safety spring (J).

### 2.4 Safety Spring Installation - Rod End (all models)

On the rod end of the puller, the safety spring installation procedure is the same for all puller models.

To install rod end safety spring components, perform the procedure in Section 2.3, but on the *rod end* of the puller. Refer to Figure 1 for exploded view.

**SEE NEXT PAGE FOR FIELD OPERATING PROCEDURE**

### 3.0 FIELD OPERATING PROCEDURE

The latch bars are designed to be engaged when the rail puller is lightly clamped onto the rail prior to pulling.

**IMPORTANT:** Always observe precautions shown on safety warning decal. See Figure 4.

1. Engage the four latch bars into the safety spring grooves. See Figure 5.
2. Complete the pull and weld process.
3. Disengage all four latch bars before releasing puller from rail.

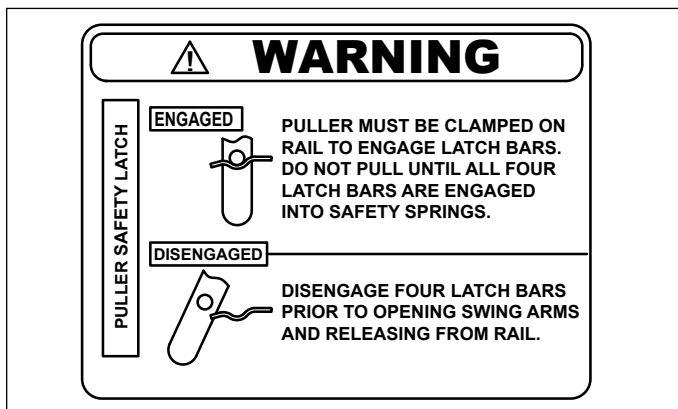


Figure 4, Puller Brake Safety Warning Decal

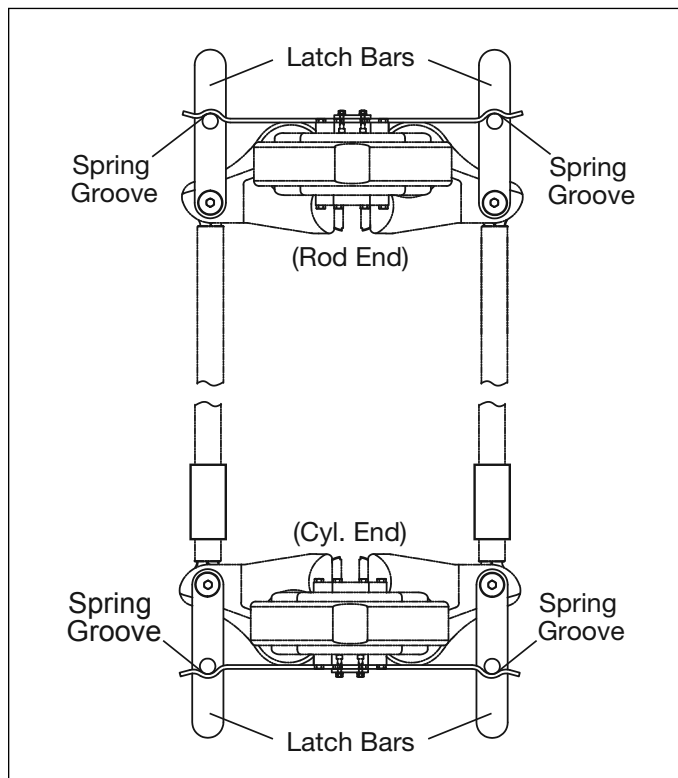


Figure 5, Latch Bars Engaged