

# PRODUCT CATALOGUE WITH ACCESSORIES

Machinery & Tools



INDUSTRY-RAILWAY  
SUPPLIERS, Inc.

INDUSTRY-RAILWAY SUPPLIERS

(630) 766-5708

sales@industryrailway.com

577 W Lamont Rd,  
Elmhurst, IL 60126

SHOP ONLINE  
industryrailway.com

EXCLUSIVE DISTRIBUTOR FOR  
**ROBEL**® NORTH AMERICA



**ROBEL**®  
NORTH AMERICA

www.robel.us

# MACHINERY & TOOLS. VERSATILE. PRACTICAL. SMART.



Since 1901 ROBEL has developed, manufactured and supplied track construction machines with a claim for safety and economic efficiency. This is the incentive for around 570 employees at the ROBEL premises in Freilassing, Germany, to create powerful machines and systems and deliver good service. For the construction and maintenance of railway infrastructure systems all over the world.

## **Strong client cooperation.**

Only those who listen will find out about the requirements of worksite operations. With an international network of representations and service partners ROBEL is at the heart of local markets. As a result, we develop safe, high-quality and user-friendly products.

## **Powerful machines.**

Knowledge paves the way to innovation. ROBEL utilizes its experience and ingenuity to convert new technologies – also from other areas – into needs-oriented solutions for track construction. Tested on the in-house track, certified in the area of use.

## **Good service.**

Professional customer service keeps machines operational where results are key. The client decides how close the cooperation with ROBEL is. ROBEL delivers reliably and on time. From the spare part supply through to all-round service.

**ROBEL. Great on Track.**

## **Machinery & Tools at a Glance**

Whatever the challenge in track construction, ROBEL has the solution. The ROBEL catalogue for Machines & Equipment provides you with a swift overview of the product portfolio of our hand guided machines.

## **Certified performance**

- Certified acc. To ISO 9001:2015 quality management system
- Certified acc. To ISO 14001 environmental management system
- Silver Level EcoVadis CSR-Rating
- Welding of Railway Vehicles and Components acc. To EN 15085-2
- Adhesive bonding on rail vehicles and parts acc. To DIN 6701
- Q1 Supplier of Deutsche Bahn AG
- TransQ Qualification (Scandinavia)
- RISQS Qualification UK

## **Great on Track. Great on the web.**

The ROBEL North America website [www.robels.us](http://www.robels.us) informs constantly about new developments in our product range and provides a digital version of this catalogue available for download.

<b>BATTERY TECHNOLOGY</b>	<b>6-10</b>
<b>DRILLING</b>	<b>11-15</b>
<b>CUTTING</b>	<b>16-19</b>
<b>GRINDING</b>	<b>20-31</b>
<b>STRESSING/PULLING/BENDING</b>	<b>32-43</b>
<b>WRENCHING/CLIPPING</b>	<b>44-58</b>
<b>LIFTING/LOADING/TRANSPORTING</b>	<b>59-73</b>
<b>TAMPING</b>	<b>74-76</b>
<b>ENERGY/LIGHTING</b>	<b>77-81</b>
<b>SECURING/MEASURING</b>	<b>82-91</b>
<b>EQUIPMENT/TOOLS</b>	<b>92-95</b>
<b>SERVICE</b>	<b>96</b>
<b>ROBEL NETWORK WORLDWIDE</b>	<b>98-101</b>



# TABLE OF CONTENTS

## BATTERY TECHNOLOGY

RODRILL B Light Battery powered Rail Drilling Machine 10.20	08
ROSAW B Battery powered Rail Band Saw 12.20 MSB	08
ROMPACT B Battery powered Portable Impact Wrench 30.20	09
ROTAMP B Light Battery powered Vertical Tamper 62.20L	09
ROXTRACT B Spike Battery Powered Spike Puller 33.20	10

## DRILLING

RODRILL Rail Drilling Machine 10.40	12
ROBORE Portable Sleeper Drilling Machine 11.12	14
ROBORE Sleeper Drilling Machine 11.64	15

## CUTTING

ROSAW Rail Band Saw 12.72 MSB	17
ROCUT Rail Cutter 13.70	19

## GRINDING

ROGRIND Rail Web Grinding Machine 13.03	21
ROGRIND Rail Head Grinding Machine 13.45 SKS	22
ROGRIND Welding Joint Grinding Machine 13.45 WBF	24
ROGRIND HF HEAD Hybrid Rail Head Profile Grinding Machine 13.49	26
ROGRIND Switch Grinding and Deburring Machine 13.61	28
ROGRIND Rail and Switch Grinding Machine 13.62	29
ROTRIM Hydraulic Weld Trimmer 14.10	31

## STRESSING/PULLING/BENDING

ROBEND PLANT Roller-type Rail Bending Machine 00.25	33
ROBEND Hydraulic Switch Blade Lining Device 22.28	34
ROBEND Hydraulic Rail Bender 22.38	35
ROGAUGE Gauge Bar 24.06	36
ROSHOE Rail Pulling Shoe 24.08	36
ROPULL Hydraulic Rail Pulling and Pushing Device 24.12	37
ROSTRESS Hydraulic Modular Rail Stressor 24.70	38
ROCARRY Rail Carrying Roller 25.16	40
ROLAX Rail De-Stressing Machine 26.01	41
ROHEAT Rail Heater 66.01	42

## WRENCHING/CLIPPING

ROMPACT Portable Impact Wrench 30.09	45
ROMPACT Portable Impact Wrench 30.10	45
ROWRENCH Precision Power Wrench 30.73 PSM	46
ROWRENCH Universal Power Wrench 30.82 RKS	48
ROWRENCH Universal Power Wrench 30.82 HKS	50
ROWRENCH Combined Power Wrench and Drilling Machine 30.83	52
ROBOLT Fish Bolt Spanner 31.82	53
ROTORQUE Torque Meter 86.12	53
ROTORQUE+ Torque Meter 86.12+	53
ROCLIP Clipping Machine 34.01	54
ROCLIP Clipping Device 34.90	55
ROTOOL Fish Bolt Spanner 35.01	56
ROTOOL Fish Bolt Spanner 35.02	56
ROTOOL Socket Wrench 36.01/02/03/04	57
ROTOOL Support Lever 38.01	57
Railroad Impact Sockets	58

## LIFTING/LOADING/TRANSPORTING

ROLIFT Rail Lifting Device 40.05	60
ROCARRY Rail Carrying Tongs 42.02	60
ROCARRY Rail Carrying Roller Tongs with Locking Bolt 42.10	61
ROCARRY Rail Carrying Tongs with Safety Latch 42.11	61
ROCARRY Rail Carrying Tongs with Suspension Eye (crane hook securing) and Locking Device 42.22	61
ROMOVE Rail Mover 43.02	62
ROMOVE Rail Mover 43.03	62
ROTHREAD Rail Threader 43.32	64
ROTOOL Wooden Sleeper Carrying Tongs 44.17	65
ROTOOL Concrete Sleeper Carrying Tongs 44.20	66
ROJACK Ratchet Track Jack with Safety Crank Handle 46.43/45/47/50	66
ROJACK Mechanical Track Jack 47.14	67
ROJACK Hydraulic Track Jack 47.17	67

ROALIGN Hydraulic Track Lifting Machine with Slewing Device 47.230	68
ROLLY Light Track Trolley 51.12	79
ROLLY Transporting Device 52.16	70
ROTOW Towing Device 52.18	71
ROLLY Track Trolley 52.30	72
ROCOUPLE Tow Bars 58.03/58.62	72
ROMOVER Wagon Mover 59.08	72
ROSTOP Drag Shoe 59.10	73
ROREAIL Rerailing Frog 59.12	73
ROTOOL Rail Tilting Device 68.03	73
ROLIFT Sleeper Lifting Device 69.20	73

## TAMPING

ROTAMP Vertical Tamper Series 62.05	75
-------------------------------------	----

## ENERGY/LIGHTING

ROPOWER HB Hybrid Drive Unit 70.02	78
ROPOWER 110/230/400 Power Supply 70.03	78
ROPOWER HD Hydraulic Power Unit 76.01	79
ROPOWER P4 DUAL HD High Pressure Power Pack 76.02	79
ROPOWER B DUAL High Pressure Power Pack 76.20	80
ROLIGHT	81

## SECURING/MEASURING

ROCLAMP Rail Clamp 68.05	83
ROFENCE Worksite Fencing System 69.30	84
ROMEAS Versine Measuring Device 82.05	85
ROMEAS Versine Measuring Device 82.06	85
ROMEAS Level Sighting and Levelling Unit 82.07	85
ROMEAS Track Square 82.11	86
ROMEAS SGauge Switch Gauge and Superelevation Measuring Device 83.07	86
ROMEAS SGauge Compact Switch Gauge and Superelevation Measuring Device 83.07	87
ROMEAS Point Fixed Point Measuring Device 83.15	88
ROMEAS Gap Joint Gap Measuring Device 83.18	88
ROMEAS Wear Stock Rail and Switch Blade Gauge 83.20	88
ROMEAS TGauge+ Track Gauge and Superelevation Measuring Device 83.37	88
ROMEAS TGauge+ Track Gauge and Superelevation Measuring Device Compact 83.37	89
ROMEAS Digi SGauge Digital Switch Gauge and Superelevation Measuring Device 83.50	89
ROMEAS Plat Platform Clearance Gauge 83.87	90
ROMEAS Head Rail Head Wear Measuring Instrument 85.01	90
ROMEAS Frog Measuring Gauge 85.02	90
ROMEAS Wheel Rail Measuring Roller 85.05	91
ROMEAS Structure Track Spacing Instrument 85.07	91
ROMEAS Temp Rail Thermometer 85.20	91

## EQUIPMENT/TOOLS

ROTOOL Punch Drift Punch 69.01	93
ROTOOL Crow Crow Bar 69.02	93
ROTOOL Hammer Hammer 69.03	93
ROTOOL Ram Track Ram 69.04	93
ROTOOL Pick Tamping Pick 69.05	93
ROTOOL Sleeper Sleeper Hammer 69.06	93
ROTOOL Fork Ballast Fork 69.07	94
ROTOOL Lever Points Lever 69.08	94
ROTOOL Shovel Shovel made of Steel Sheet 69.09	94
ROTOOL Broom Switch Broom 69.10	94
ROTOOL Adze Adze 69.11	94
ROTOOL Chisel Cold Chisel 69.12	94
ROHORN Single Single-Tone Signal Horn 69.13	95
ROSIGN Stop Disc 69.14	95
ROHORN Multi Multi-Tone Signal Horn 69.15	95
ROTOOL Eject Clip Bolt Ejecting Device 69.16	95
ROTOOL Extract Extraction Socket 69.18	95
Torque Wrench	95

## SERVICE

	97
<b>ROBEL NETWORK WORLDWIDE</b>	<b>98</b>

# BATTERY TECHNOLOGY



Battery series



**Powerful battery technology meets reliable mechanics.  
Clean, quiet and effective working.**

#### ITS BENEFITS. YOUR BENEFITS.

##### Compact. Practical. Ergonomic.

- Battery packs, charger and machines can be combined
- Clearly visible charge indicator

##### Quiet. Zero emissions. Clean.

- Low noise emissions in line with noise protection regulations for urban areas
- No exhaust gases, unpleasant smells or pollution

##### Maintenance-free & cost-efficient

- Maintenance-free battery and charger
- Machine is ready to use straight away



Accessories: ROCHARGER

TECHNICAL SPECIFICATIONS	ROBATTERY 71.01	ROCHARGER 71.11
	BATTERY	CHARGER
Output		250 W
Charging period		approx. 3 – 4 hours
Voltage	43 V	primary 110 – 240 V secondary 36 – 49.8 V
Battery capacity	12.9 Ah	
Energy content	700 Wh	
Dimensions (L x W x H)	~13" x 5.5" x 6"	~13.5" x 8" x 5.5"
Weight	~14 lbs	~8 lbs

**Easy and efficient drilling of rails.**

**ITS BENEFITS. YOUR BENEFITS.**

**Short drilling time, reliable result**

- Drilling time about 30-60 seconds, depending on execution
- LED display shows the engine load

**Simple and flexible use**

- One-man operation
- Manual feed
- Universal operation due to different rail profile patterns
- Low vibration operation
- LED display for illumination of the work area

**Coolant**

- Economical consumption due to spring-loaded valve
- Flows through drill spindle and drill bit
- Reservoir with pressure pump

**Option:** With rail clamping device and multi-hole drilling templates



**TECHNICAL SPECIFICATIONS RODRILL B Light**

Output	1600 W
Number of drillings	75 at 5/8" /60 at 1-3/8"
Max. drill spindle speed	300 U/min
Max. drill diameter for rail web tensile strength 900 N/mm <sup>2</sup>	~1.5"
Rail spacing	~ 13.8"
Dimensions (L x W x H)	~22" x 8" x 15"
Total weight with battery	~48 lbs
Weight Battery	~14 lbs

**Accessories see RODRILL 10.40**

**Precise rail cutting. ROBEL patented 4-roller technology.**

**ITS BENEFITS. YOUR BENEFITS.**

**Precise cutting of the rail, with:**

- Cold saw cut
- Quick and vibration-free operation
- No sparks
- Maximum durability
- Easy band replacement
- LED display for illumination of the work area

**Long band service life up to 25 cuts at unhardened rails, up to 8 cuts at hardened rails or of tough steel.**

**TECHNICAL SPECIFICATIONS ROSAW B**

Output	1600 W
Battery power	~15 – 25 cuts
Cutting speed	72 m/min
Cutting time	~2 min
Dimensions (L x W x H)	~31" x 23" x 22"
Weight Band Saw	~99 lbs
Weight Clamping bock	~42 lbs
Weight Battery	~14 lbs

**Accessories see ROSAW 12.72 MSB**



## ROMPACT B Battery powered Portable Impact Wrench

30.20

Powerful and flexible wrenching.

### ITS BENEFITS. YOUR BENEFITS.

#### Compact in construction, flexible in use

- For tightening and loosening nuts and sleeper bolts
- 90° adjustable handle, particularly for wrenching brackets

#### Ergonomic application

- Height adjustable handle
- Low vibration operation

### TECHNICAL SPEC. ROWRENCH B

Output	adjustable 50/75/100%
Number of tightening cycles	~600 (per 4 seconds)
Max. Torque	1800 Nm
Dimensions (L x W x H)	~31" x 20" x 9"
Total weight with battery	~42 lbs
Weight Battery	~14 lbs
Weight Socket	~3.5 lbs

Accessories see ROMPACT 30.10



## ROTAMP B Light Battery powered Vertical Tamper

62.20L

Lasting correction of track geometry level errors.

### ITS BENEFITS. YOUR BENEFITS.

#### Permanently stable track geometry, ergonomic tamping

- Optimum compaction of ballast under the sleeper due to ROBEL vertical tamping principle
- High bearing load of the track because of the interlocked ballast
- Minimum hand-arm vibration thanks to patented 2-level vibration decoupling
- Easy operation due to low weight of the machine

### TECHNICAL SPEC. ROTAMP B Light

Output	2000 W
Dimensions (L x W x H)	~42" x 20" x 16"
Total weight with battery	~55 lbs
Weight Battery	~14 lbs

Accessories see ROTAMP 62.05





## ROTRACT B Spike

## Battery Powered Spike Puller

33.20

Portable battery powered Spike Puller for pulling spikes out of sleepers.

### ITS BENEFITS. YOUR BENEFITS.

#### Easy use

- High traction power up to 7,5 tons
- Suitable for Battery powered Impact Wrench M18 Fuel™. US Version (not included in delivery)
- Conversion to other spike forms (Hairspike – Dogspike) possible due to easy change of tongs

#### Emission-free and safe

- Without exhaust emissions
- Large area of application (tunnel and urban area)
- Maximum safety due to closed design



### TECHNICAL SPECIFICATIONS

### ROTRACT B Spike

Weight

~28 lbs without Impact Wrench

~35 lbs with Impact Wrench

Traction power

max. 7,5 tons

### ACCESSORIES

5334220002 Hairspike tongs  
9002003168 Reflector stripes  
8998900100 Shoulder strap

9002501695 Spanner  
9002501765 Comb. Ring tong

#### Toolkit for tong change

9002501146 Roll-up case

#### Tong suitable for

5334220001 Spike Type "Dogspike"  
5334220002 Spike Type "Hairspike"

## ROPOWER B DUAL

## High Pressure Power Pack

76.20

#### To power:

- ROSTRESS Hydraulic Rail Stressor 24.70
- ROTRIM Hydraulic Weld Trimmer 14.10

### ITS BENEFITS. YOUR BENEFITS.

- Low space requirement for transport and storage, due to compact construction
- Protection of the components from damage
- Clean due to emission-free working and reduced noise emissions
- Large area of application (tunnel, urban area, surface mining)
- ROBEL Batteries 71.01 useable (550 Wh, 700 Wh)



### TECHNICAL SPECIFICATIONS

Drive	Akku
Battery output	700 Wh
Dimensions (L x B x H)	~24" x 20" x 17"
Weight	~99 lbs (incl. battery)
Weight battery	~14 lbs

# DRILLING



**RODRILL**

**Battery Powered Rail Drilling Machine**

**Efficient drilling of rail profiles in the signal technology and railway construction.**

**ITS BENEFITS. YOUR BENEFITS.**

**Efficiency and mobility**

- Drilling time about 12 – 60 seconds, depending on rail thickness and execution
- Coolant reservoir with pressure pump
- Coolant flows through drill spindle and drill bit

**Easy handling**

- One-man operation
- Manual feed



**TECHNICAL SPECIFICATIONS**

**RODRILL P4 light**

**RODRILL B Light**

	AIR-COOLED 4-STROKE PETROL ENGINE	10.20 RECHARGEABLE BATTERY
Type	HONDA-GX35	
Output	1 kW at 7000 rpm	1600 W; Number of drillings: 75 at Ø 5/8" / 60 at Ø 1-3/8"
Max. drill spindle speed	300 rpm	300 rpm
Max. drill diameter for rail web		
Tensile strength 900 N/mm <sup>2</sup>	~1.5"	~1.5"
Rail spacing	~14"	~14"
Dimensions (L x W x H)	~20" x 12" x 20.5"	~20" x 12" x 20.5"
Weight	~42 lbs	with battery ~50 lbs; weight battery ~14 lbs

[More information: Battery Technology](#)

**ANNULAR RAIL CUTTERS – Broach Cutters for Railing Drilling Applications**

**ROBEL Annular Rail Cutters – 7/8" Depth**

- HEN-MR902-005 → 3/4" x 7/8"
- HEN-MR902-078 → 7/8" x 7/8"
- HEN-MR902-009 → 1" x 7/8"
- HEN-MR902-011 → 1-1/8" x 7/8"
- HEN-MR902-012 → 1-1/4" x 7/8"
- HEN-MR902-013 → 1-5/16" x 7/8"
- HEN-MR902-014 → 1-3/8" x 7/8"
- HEN-MR902-015 → 1-7/16" x 7/8"
- HEN-MR902-016 → 1-1/2" x 7/8"

**ROBEL Annular Rail Cutters – 2" Depth**

- JAN-SC562 → 9/16" x 2"
- JAN-SC750 → 3/4" x 2"
- JAN-SC875 → 7/8" x 2"
- JAN-SC100 → 1" x 2"
- JAN-SC112 → 1-1/8" x 2"
- JAN-SC119 → 1-3/16" x 2"
- JAN-SC125 → 1-1/4" x 2"
- JAN-SC137 → 1-3/8" x 2"
- JAN-SC150 → 1-1/2" x 2"

**ROBEL Annular Rail Cutters – 3" Depth**

- HEN-SC750-3 → 3/4" x 3"
- JAN-SC1000S → 1" x 3"
- JAN-SC9750S → 7/8" x 3"
- JAN-SC9395S → 15/16" x 3"

Other sizes available upon request.



## ACCESSORIES

### ROBEL Pilot Pins

- M880-201 → Pilot Bit for 7/8" Depth Annular Cutters  
TST50P → Pilot Bit for Third Rail Drilling

Other sizes available upon request.

### ROBEL Spiral Drilling Bits & Accessories

#### Twister Bits for Signaling Drilling Applications

- N-RPE130 → 13 mm Spiral Drill Bit  
N-RPE130L → 13 mm Extra Long Spiral Drill Bit  
N-RPE190 → 19 mm Spiral Drill Bit for Aluminum Rail  
N-RPV95C → 3/8" Spiral Drill Bit

Adaptors for Twister Bits available upon request.

Other sizes available upon request.

### ROBEL Coolant Fluid

- ROBEL-RL2 → Biodegradable Vegetable Cutting Fluid - 1 Gallon

### Flip-Flop ROBEL Rail Shoes

- 7814050170 → Flip Flop Rail Drill Shoe 115/119lbRE/136/132lbRE  
7814050180 → Flip Flop Rail Drill Shoe 133lbRE/132/136lbRE  
7814050190 → Flip Flop Rail Drill Shoe 140lbRE/141lbAB

Other sizes available upon request.

### Additional RODRILL Accessories

- 9801040004 Aluminium transport and storage box for holding and safely transporting the machine, coolant reservoir, collecting tray, drill bits and coolant. Fitted with lockable lid and carrying handles.  
9801040005 Aluminium coolant and swarf collecting tray

Other RODRILL accessories available upon request.



Drill bit, adapter and coolant ejector pin



Adapter and 13 mm spiral drill bit



Transport case

For drilling holes in wooden sleepers

**ITS BENEFITS. YOUR BENEFITS.**

**Compact and powerful**

- Light construction and easy to handle
- Engine speed controlled by hand throttle lever

**Safe and ergonomical**

- Highest possible safety due to centrifugal clutch
- Userfriendly application due to machine hight
- Replaceable chuck for drill bits up to 16 mm shank diameter
- Drilling depth with depth stop and drill sleeve
- Optional: combined depth stop with fixed drill sleeve



**TECHNICAL SPECIFICATIONS**

**ROBORE P4**

Drive	air-cooled 4-cycle petrol engine
Type	Dolmar MS 4300
Output	1.5 kW at 7500 rpm
max. drill spindle speed	950 rpm
max. drill diameter	~1"
adjustable drilling depth	~4" – 7"
Dimensions without fixed drill sleeve (L x B x H)	~16.5" x 20" x 31.5"
Dimensions with fixed drill sleeve (L x B x H)	~16.5" x 20" x 42"
Total weight	~29 lbs

**ACCESSORIES**

**Tie Drilling Bits – Universal Auger Bits for Tie Drilling Applications.**

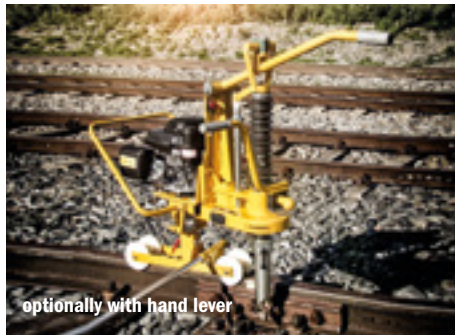
- N-RPV-140 → 9/16"
- N-RPV-160 → 5/8"
- N-RPV-180 → 11/16"
- N-RPV-190 → 3/4"
- N-RPV-210 → 13/16"
- N-RPV-220 → 7/8"
- N-RPV1-2 → 1/2" x 18"
- N-RPV7-8 → 7/8" x 18"
- N-RPV3-4 → 3/4" x 18"
- N-RPV11-16 → 11/16" x 18"
- N-RPV13-16 → 13/16" x 18"
- N-RPV15-16 → 15/16" x 18"



Other sizes available upon request.  
Other ROBORE accessories available upon request.

**For drilling holes in wooden sleepers**

- Powerful & accurate guidance of drill bit
- Drive via a heavy-duty narrow V-belt with self-tensioning device
- Simple operation
- Drill feed via wrench point and return spring
- Continuously adjustable drilling depth
- Drill spindle adjustable for angled holes (max. 6°)
- Quick-release chuck for drill bits with cylindrical shank up to 16 mm
- With drill sleeve
- Hub flange and replaceable drill guide for centred drilling through baseplate holes
- Rail running gear with insulated flanged wheels
- Plug-in outrigger with insulated castor

**TECHNICAL SPECIFICATIONS****ROBORE P4**

Drive	air-cooled 4-stroke petrol engine
Type	ROBEL 190
Output	4.9 kW at 4000 rpm
Max. drill spindle speed	1200 rpm
Max. drill diameter	~6/7
Max. drilling depth	~7"
Max. distance of drill spindle from rail centre	~15"
Max. capacity of chuck	5/8"
Normal design suitable for:	
Rail height from/to	~3.5"/7"
Head width up to	3"
Gauge	~56.5"; Other gauges on request.
Dimensions (L x W x H)	~39.5" x 16" x 34.5"
Total weight	~139 lbs

**ACCESSORIES****9" Tie Drilling Bits – For The ROBEL 11.64**

NS-RPV-140	→ 9/16"
NS-RPV-160	→ 5/8"
NS-RPV-180	→ 11/16"
NS-RPV-190	→ 3/4"
NS-RPV-210	→ 13/16"
NS-RPV-220	→ 7/8"

Other sizes ROBORE accessories available upon request.

**Additional ROBORE Accessories**

8818930004 Manual Hand-Lever Activation



# CUTTING



**ROCUT**

**Rail Cutter**



The innovation for all sawing requirements in new construction and maintenance.

**ITS BENEFITS. YOUR BENEFITS.**

**Patented 4-roller technology**

- Precise and fast cutting of the rail, due to stable machine frame
- long life cycle thanks to reduced band twist

**Efficient and ergonomic operation**

- Easy and quick band replacement
- Petrol, electric and battery version

**Flexible use**

- Silent and low vibration operating
- Work with all types of rail, irrespective of degree of wear

**Protection for man and machine**

- Non-sparking work for operator safety
- Cold saw cut for stress free rail cutting, to preserve track quality

Long band service life up to 25 cuts at unhardened rails, up to 8 cuts at hardened rails or of tough steel.

TECHNICAL SPECIFICATIONS	ROSAW P4
Drive	4-STROKE PETROL ENGINE
Type	Honda GX35
Output	1.0 kW
Cutting speed	72 m/min
Cutting time	~2 min
Spindle feed	manual
Dimensions (L x W x H)	~32" x 23" x 21.5"
Weight Band saw	~93 lbs
Weight Clamping block	~42 lbs

TECHNICAL SPECIFICATIONS	ROSAW B
BATTERY	
Cutting speed	72 m/min
Cutting time	~2 min
Battery power	~20 Cuts
Weight (without battery)	~87 lbs
Weight Battery	~14 lbs
Weight Band saw	~99 lbs
Weight Clamping block	~42 lbs

More information: Battery Technology





## ACCESSORIES

### Saw Bands

- 9801272008 → Saw blade for 12.72, 86.4" x 6/8" x 1/32" – Standard  
9810272009 → Saw blade for 12.72, 86.4" x 6/8" x 1/32" – Premium (edodur)

### Cutting Fluid

- ROBEL-RL2 → Biodegradable Vegetable Cutting Fluid – 1 Gallon

### Additional Accessories

- 9801040005 → Aluminium coolant and swarf collecting tray  
9800127006 → 5-litre pressure tank with bayonet coupler

### Needed Accessories only for Battery ROSAW 12.20

- 7806800001 → Battery (700 Wh)  
7806850001 → Charger (700 Wh)

Other ROSAW accessories available upon request.

**For fast and economical cutting of maximum strength rails**

- Short cutting times, e.g. 1 min. possible for rail profile 49E1
- The cutter can be clamped in such a way that sparks consistently fly downwards and cutting discs are used in an optimum manner.
- Sturdy, light-weight aluminium guide frame with articulated arm
- Quick clamping device for S49 (49E1), S54 (54E3, UIC60 (60E1) and R160 (60R1). Other rail profiles available upon request.
- With kerf indicator for precise determination of the cutting point.
- The cutting method from above and at an angle downwards leads to direct weight relief for the operator.
- Easy starting of the motors with Smart-Start decompression equipment.
- Optimum filter effect due to air injection technology, fine filter and impregnated pre-filter
- Centrifugal clutch as integrated safety feature
- Spark protection for cutting discs – pre-tensioned and continuously adjustable
- Adapter for cutting discs with 1 inch hole
- Accessibility – V-belt tension without disassembly of casing
- Electronic ignition, sealed against dust and humidity



<b>TECHNICAL SPEC.</b>	<b>ROCUT P2 350</b>	<b>ROCUT P2 400</b>	<b>ROCUT P2 350 (without safety shutdown)</b>
Drive	air-cooled 2-stroke petrol engine	air-cooled 2-stroke petrol engine	air-cooled 2-stroke petrol engine
Type	Husqvarna K1270	Husqvarna K1270 Rail	Husqvarna K1270
Output	5.8 kW at 8400 rpm	5.8 kW at 8400 rpm	5.8 kW at 8400 rpm
Max. Engine speed	9300 rpm	9300 rpm	9300 rpm
Cutting disc diameter	~14"	~16"	~14"
Max. cutting disc speed	5100 rpm	4700 rpm	4700 rpm
Max. permissible circumferential speed	100 m/s	90 m/s	90 m/s
Cutting rate about	~1 min/cut	~1 min/cut	~1 min/cut
49E1	up to 8 cuts/disc	up to 10 cuts/disc	up to 8 cuts/disc
60E1		up to 8 cuts/disc	up to 6 cuts/disc
Guide frame	~20 lbs	~12 lbs	~12 lbs
Motor cutter	~40 lbs	~34.5 lbs	~33 lbs
Cutting disc	~2 lbs	~3 lbs	~2 lbs
Total weight	~61 lbs	~49.5 lbs	~47 lbs
Dimensions (L x W x H)	~35" x 17" x 16"	~35.5 x 10" x 19"	~29" x 9.5" x 17"

**ACCESSORIES**

**Norton Saint Gobain Cut-Off Discs – ROBEL Private Label**

**14" Cutting Discs**

- 66253260462 → 14" x 1/8" x 1" Cutting Disk (A30X)
- 66253337716 → 14" x 1/8" x 1" Cutting Disk (RailCutX)
- 66253363694 → 14" x 1/8" x 1" Cutting Disk (Norzon III)

**16" Cutting Discs**

- 66253259935 → 16" x 1/8" x 1" Cutting Disc (A30X)
- 66253335024 → 16" x 1/8" x 1" Cutting Disc (RailCutX)
- 66253464415 → 16" x 1/8" x 1" Cutting Disc (Norzon III)

**Other ROCUT Accessories**

- 8001381001 Safety Blocking Device (ROBEL 13.81)  
For cutting rails under compressive stress, incl. 1 pair of wedges
- 8001381002 Spare wedges, 1 pair (ROBEL 13.81)
- 8709900001 Steel transport and storage box, with lockable lid and two carrying handles, with holder for 10 cutting discs, dimensions ~35.5" x 18" x 18" (L x W x H)

Other ROCUT accessories available upon request.

# GRINDING



**ROGRIND**

**Rail Head Grinding Machine**



**For derusting the rail web for a continuous current flow of the flash welder or to prepare an insulated joint**

- Grinding angle can be set precisely depending on the rail

- Profile grinding wheel with rotatable protective hood
- Transverse travelling gear for easy movement and positioning of the machine
- Rollers made of insulated material

**TECHNICAL SPECIFICATIONS**

**ROGRIND P4 Web**

Drive	4-stroke petrol engine
Type	HONDA GX 270
Output	6.3 kW at 3600 rpm
Grinding disc speed	4500 rpm
Profile grinding wheel, for rails from S49	
Outside diameter	~5"
Inside diameter (holder)	25.4 mm (1")
Height	~3.5"
Dimensions (L x W x H)	
Machine	~71" x 23.5" x 43"
Transverse travelling gear	~73" x 21" x 8"
Weight, transverse travelling gear	~55 lbs
Weight, machine	~209 lbs

**ACCESSORIES**

**Profile grinding wheels**

9898081080 5.3" x 2.2" x 3.5" x 2 x 1"

9002000556 5.3" x 2.2" x 2.8" x .78 x 1"

8988980001 Conversion kit for wire brush

8329910001 Ballast box (for transverse travelling gear)



Conversion kit for wire brush



Profile grinding wheel

# ACCURATE AND PRECISE GRINDING WELD JOINTS.



Right-hand guide handle  
Standard guide system 5159900004

The grinding machine for reprofiling the rail head.

## ITS BENEFITS. YOUR BENEFITS.

### Powerful machine. Universal application.

- Can be used for all common types of rail due to adjustable spacing of guide discs on various rail head widths
- Durable stainless steel tank on ROGRIND P4 2.0
- Powerful electric motors
- Optional: LED lighting for ROGRIND P4 2.0 for optimum illumination of work area

### Simple operation.

#### Controlled and precise grinding.

- Machine specially adapted to the operator
- Adjustment of spindle resistance without tools
- Easy change of cup wheel due to Quicklock
- Digital operating hour meter/rev counter

TECHNICAL SPECIFICATIONS	ROGRIND P4 2.0	ROGRIND P2 2.0	ROGRIND E 2.0	ROGRIND D 2.0
Drive	Single-cylinder 4-stroke engine	Single-cylinder 2-stroke engine	Electric motor, 3-phase	Air-cooled single-cylinder diesel engine
Type	ROBEL 190	Minsel M165	400 V, 50 Hz	Yanmar L48AE-S
Output	~5 kW at 4200 rpm	4.9 kW at 4500 rpm	2.7 kW at 2850 rpm	3.5 kW at 3600 rpm
Total weight	from ~142 lbs	from ~141 lbs	from ~138 lbs	from ~165.5 lbs
Roller spacing	~39.5"	~39.5"	~39.5"	~39.5"

## ACCESSORIES

### Guide systems

- 5150220050 V Standard guide system
- 5150200001 V Universal guide system
- 5158931002 Multiroller carrier (2 required)

### Cup Wheels and Grinding Wheels

#### Norton Saint Gobain – ROBEL Private Label

Sizes available upon request.

#### Flexovit Abrasives – ROBEL Private Label

Sizes available upon request.

#### ROBEL Cup Wheels

Sizes available upon request.

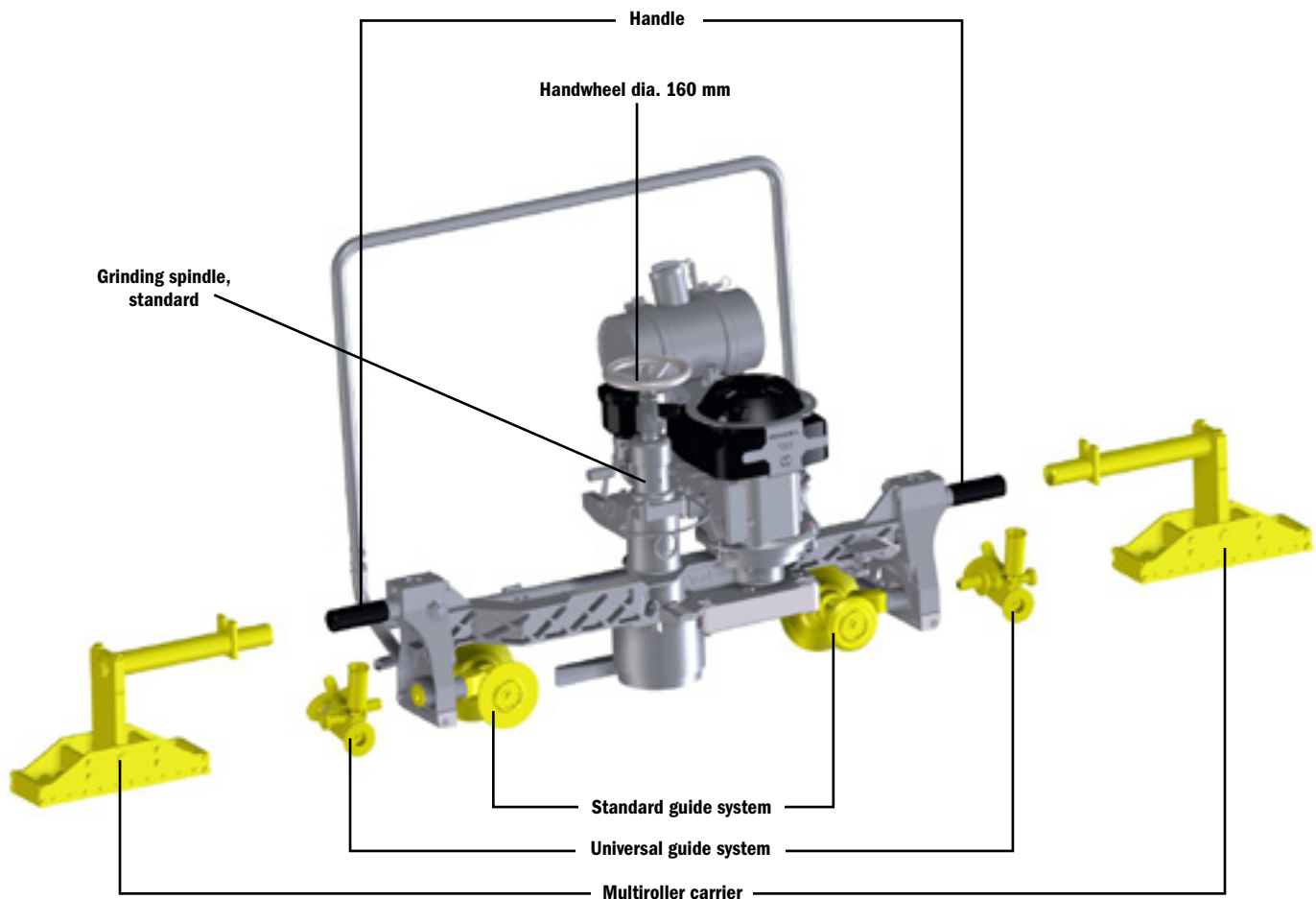


Illustration 13.45 SKS: Left-hand guide handle

Do you require a different design?  
Please get in touch with your ROBEL contact.

**LIGHT-WEIGHT.  
COMPACT.  
POWERFUL.**



Left-hand guide handle. Universal guide system, with extension arm, 5159900074

**For the precise grinding of welding joints and reprofiling of the complete rail head. Can also be used at switches and for grinding grooved rails.**

**ITS BENEFITS. YOUR BENEFITS.**

**Convenient to use. Individual format.**

- Easy change of cup wheel due to Quicklock
- Non-projecting handles for easy transport
- Optional: LED lighting for ROGRIND P4 3.0 for optimum illumination of work area
- Side stand for safe parking of machine for the version with left-hand guide handle

**Powerful machine. Powerful grinding.**

- Adjustment of rotational resistance on spindle handwheel as required without tools
- Durable stainless steel tank on ROGRIND P4 3.0
- Powerful drives
- Height-adjustable spark shield
- Stable universal guidance system

<b>TECHN. SPEC.</b>	<b>ROGRIND P4 3.0</b>	<b>ROGRIND P2 3.0</b>	<b>ROGRIND E 3.0</b>	<b>ROGRIND D 3.0</b>
Drive	Single-cylinder 4-stroke engine	Single-cylinder 2-stroke engine	Electric motor, 3-phase	Diesel engine Yanmar
Type	ROBEL 190	Minsel 165	400 V, 50 Hz	3,5 kW at 3600 rpm
Output	~5 kW at 4200 rpm	4,9 kW at 4500 rpm	2,7 kW at 2850 rpm	
Total weight	from ~139 lbs	from ~138 lbs	from ~134.5 lbs	from ~161 lbs
Roller spacing	~33.5"	~33.5"	~33.5"	~33.5"

## ACCESSORIES

### Accessories specific to ROGRIND P4 3.0

5158930008 Tank handle

### Guide systems

5150220050V Standard guide system

5150200001V Universal guide system

5158930001 Multiroller carrier (2 required)

5158931002 Extension arm for frog noses

### Handles

5158930005 Handle, inside

5158930009 Handle, outside

### Handwheel

5158930003 Handwheel dia. ~4"

5158930010 Handwheel dia. ~4"

### Grinding spindle

by customer: grinding spindle, standard

by customer: grinding spindle, raised

### Cup Wheels And Grinding Wheels

Norton Saint Gobain – ROBEL Private Label

Sizes available upon request.

### Flexovit Abrasives – ROBEL Private Label

Sizes available upon request.

### ROBEL Cup Wheels

Sizes available upon request.

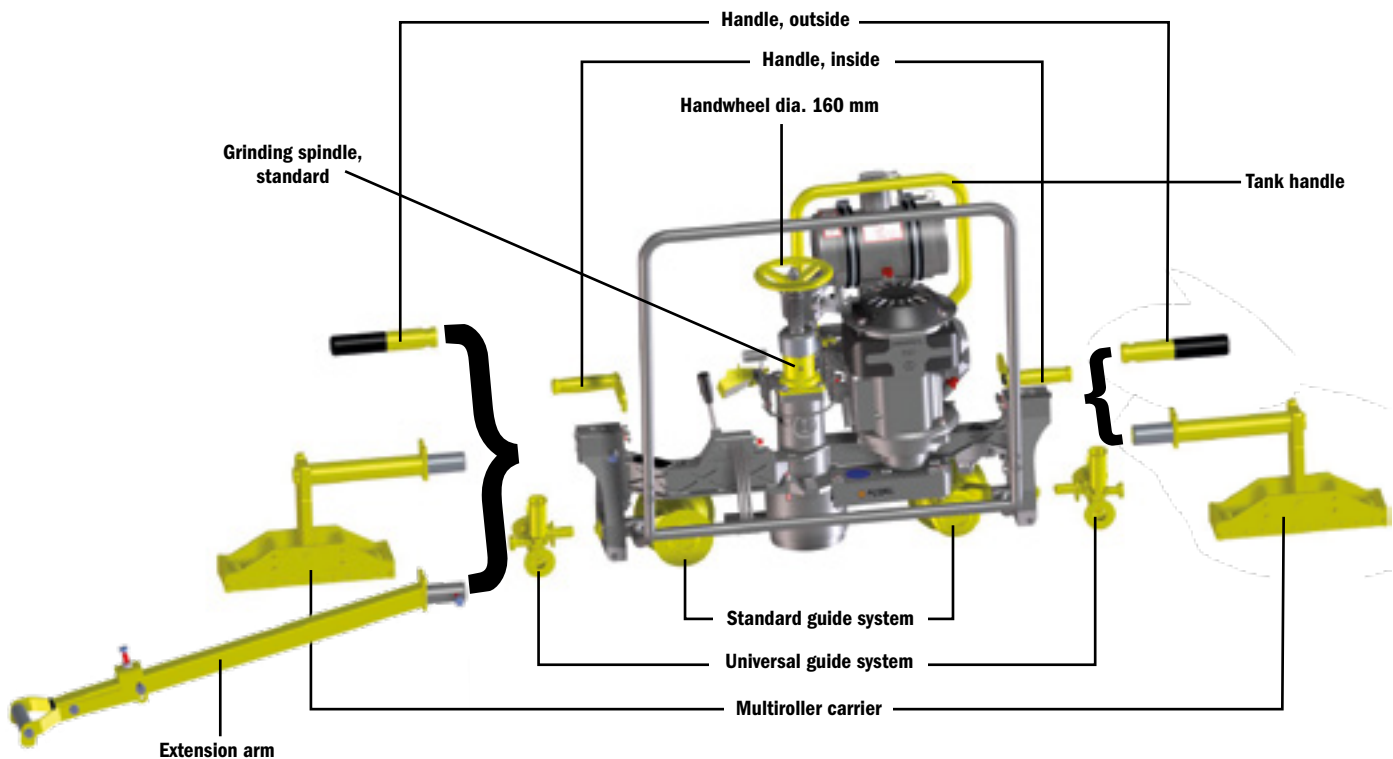


Illustration 13.45 WBF: Right-hand guide handle

**Do you require a different design?  
Please get in touch with your ROBEL contact.**



# ONE MACHINE. TWO MODULES.

Simply ergonomic high-frequency grinding.



## ITS BENEFITS. YOUR BENEFITS.

### For a better surface pattern of the rail

- Less working time thanks to consistently high grinding performance
- High grinding quality and unobstructed view of the grinding area due to compact and low vibration e-motor
- Finishing achieved with a fine-grinding method patented by ROBEL

### Intelligent use of energy

- Energy conversion without a loss from e-motor onto grinding shaft/grinding wheel
- ROBEL Supercap in the Power pack: Excessive energy is collected and stored via the generator directly in compact electrolytic capacitors (Supercaps) and released during peak loads

### Smart positioning, smooth grinding

- The grinding unit and the Power pack are two separate units. Transport is therefore easy and ergonomic.
- Effortless operation thanks to split up machine, weight of less than 60 kg each unit
- Comfortable handling of the machine due to O-handles with telescopic function and individual settings

### More work safety, more efficiency

- Low hand/arm vibrations
- Optimum view onto the display in an ergonomic angle
- Integrated air guide carries dust and sparks down and outward
- Operator is exposed to significantly less exhaust gas, heat and noise

➔ [More info on ROBEL.com](http://More info on ROBEL.com)

## TECHNICAL SPECIFICATIONS

## ROGRIND HF Head

Drive	Electric motor
Type	Brushless DC motor
Continuous output	3 kW
Peak output	7 kW
Circumferential speed	~164 ft/s
Cup wheel	~6"
Grinding disc speed	~5000 rpm
Power Supply	230 V
Grinding base/roller spacing	~39"
Depth adjustment of grinding spindle	electrical
Dimensions (L x W x H)	~77" x 18" x 33"
Without telescopic handles (L x B x H)	~69" x 16" x 33"
Weight	~125 lbs
Weight, outrigger	~19 lbs
Weight, connection cable	~11 lbs



More information: [Energy/Lighting](#)

**For grinding of built-up welds on switch blades, crossing frogs, stock rails and check rails as well as for deburring rail heads and switches. Optionally also for grooved rails for trams.**

Adjustment of grinding disc via ergonomically adjustable hand lever and hand wheels for precise guiding:

- Can be moved by 32 degrees to either side
- Height adjustment

**Option for grinding grooved rails:** ROGRIND P4/E Switch 1.0 (grooved)



**ITS BENEFITS. YOUR BENEFITS.**

**High work quality & profitability**

- Precise settings
- Particularly large work area
- Check rail guidance to bridge the clearance in the frog point area to ensure linear grinding.
- Greater stability due to double holder of the 4 insulated flange rollers (divided)

**User-friendly**

- Ergonomic guidance and operation of the machine
- Good view of the grinding area
- Frame can be divided for easier transport

**Easy to maintain**

- Power transferred via ribbed V-belt

**TECHNICAL SPECIFICATIONS**

**ROGRIND P4 Switch 1.0**

**ROGRIND E Switch 1.0**

Drive	4-stroke petrol engine	electric motor, 3-phase
Type	HONDA GX 200	
Output	4.3 kW at 3600 rpm	Grinding disc
Outside diameter	~10"	
Bore x thickness	~5" x 1"	
Max. swivel range	32° in both directions	
Grinding disc speed	3500 rpm	
Dimensions (L x W x H)	93" x 47" x 36.5"	
Machine	~192.5 lbs	
Outrigger	~25.5 lbs	
Grinding disc	~6 lbs	
Total weight	~222.5 lbs	

**ACCESSORIES**

**Grinding discs**

- 9002000701 dia. 10" x 1", holder dia. 4.7", circumferential speed max. 50 m/s, fabric reinforced for flat bottom rails
- 9002000463 dia. 10" x 1.6" x dia. 3
- 9002000439 dia. 10" x 1.25" x dia. 1"

**Grinding disc holders**

- 8890500001 dia. 10" x 1.6" x dia3"

**Flange extension**

- 9801361111 Set from 56 ½" to 63"
- 9801361112 Set from 56 ½" to 60"
- 9801361113 Set from 56 ½" to 66"
- 9801361106 Guide frame with guide rollers for gauge reduction from 56 ½" to 35"
- 8898980001 Spark safety set for rollers
- 9000100195 Tarpaulin

8899910001 Machine centring in switch area

**Additional equipment for grinding grooved rails**

- 8894150004 Conversion kit for grinding disc dia. 10" x 0.60"
- 8890110005 Roller set ( 4 off) with flange (when retrofitting)

**Grinding disc**

- 9002000654 dia. 10" x 0.60", holder dia. 4.7", circumferential speed max. 50 m/s, fabric reinforced for grooved rails



**Grinding disc**

# UNIVERSAL GRINDING FROM RAIL TO SWITCH.



## ITS BENEFITS. YOUR BENEFITS.

### Wide range of applications

- Can be used for almost of the grinding- and reprofiling works, especially in the area of switches
- Option: use for grooved rails

### High grinding and working quality

- Precise surface pattern due to stable machine operation and central adjustment of the grinding wheel
- Exact setting of the grinding wheel angle by adjustment and great scale
- Constant grinding on the side of the rail due to additional guide rollers
- Twist-resistant due to strong, closed frame

### Practical use

- Intuitive operation due to ergonomical levers and hand gears
- reducible transport size of the frame
- Continuously adjustment of track gauge due to telescopic frame without tools

### Optional

- Dead man's brake
- Toolbox for storage



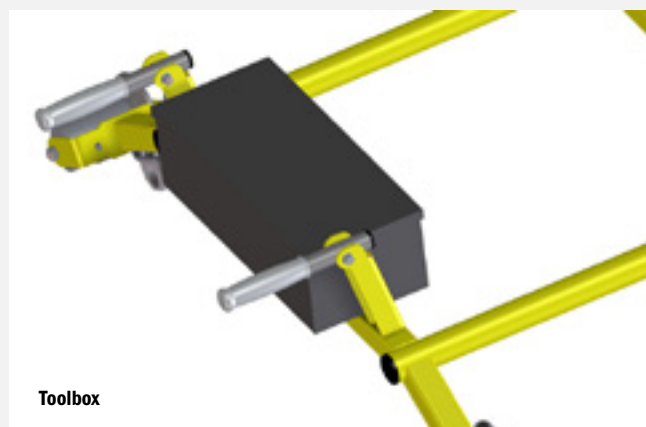
TECHNICAL SPECIFICATIONS	ROGRIND P2 Switch 2.0	ROGRIND P4 190 Switch 2.0
Drive	2-stroke petrol engine	4-stroke petrol engine
Type	Minsel 165	ROBEL 190
Output approx.	4.9 kW at 4500 rpm	approx. 5.0 kW at 4000 rpm
Cup wheel outside diameter	5"	5"
Inclination adjustment range	Inside 80°, outside 20°	Inside 80°, outside 20°
Grinding disc speed	~4500 rpm	~4200 rpm
Dimensions working settings (L x W x H)	~82" x 46" x 46"	82" x 46" x 41" mm
Dimensions transport settings (L x W x H)	~65" x 46" x 31"	
Total weight	~278 lbs	~278 lbs
Track gauge	39" – 66"	39" – 66"

TECHNICAL SPECIFICATIONS	ROGRIND P4 390 Switch 2.0	ROGRIND E Switch 2.0
Drive	4-stroke petrol engine	electric motor, 3-phase
Type	Honda GXV 390	400V 50Hz
Output approx.	7,6 kW at 3600 rpm	2,7 kW
Cup wheel	6"	5"
Inclination adjustment range	-30/+30	-80/+20
Grinding disc speed	3600 rpm	2850 rpm
Dimensions working settings (L x W x H)	82" x 51" x 46"	82" x 46" x 46"
Dimensions transport settings (L x W x H)	65" x 51" x 46"	65" x 46" x 46"
Total weight	320 lbs	273 lbs
Track gauge	35" – 66"	35" – 66"

## ACCESSOIRES

### Cup wheels

- 9002000687 dia. 5" Central nut holder M20, max. circumferential speed 50 m/s, 5" x 2.5", grit size A12
- 9002000688 dia. 5" Screw attachment 4xM8, max. circumferential speed 50 m/s 5" x 65, pitch circle dia. 3.5", grit size A12
- 9002000690 dia. 6", Central nut holder M20, max. circumferential speed 50 m/s, 6" x 2.5", grit size A14
- 9002000689 dia. 6" mm Screw attachment 4xM8, max. circumferential speed 50 m/s, 6" x 2.5", pitch circle dia. 115, grit size A14
- 9878081000 Cup wheel dia. 3.5" conical, for frog noses and switches, central nut holder M20 (also suitable for the running surface of grooved rails), circumferential speed max. 50 m/s, 3.5" x 2.5", grit size A14
- 9002000330 dia. 3.5" mm cylindrical for built-up welds, central nut holder M20
- 5128930001 Toolbox
- 5129910004 Retrofit kit deburring R190
- 5129910005 Retrofit kit deburring M165
- 9002000687 Cut wheel 5"x M20
- 9002000690 Cut wheel 6" x M20
- 5131280001 Dead man's brake
- 5129910004 Conversion kit for extendable swivel range to 90°
- 5129900008 Adapter plate with extendable swivel range



Used in the production of thermit welding of rail joints.

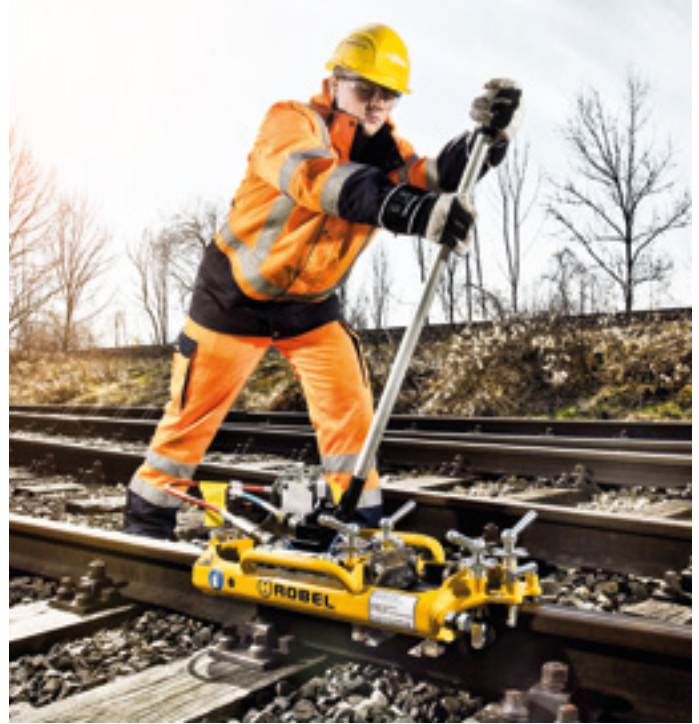
**ITS BENEFITS. YOUR BENEFITS.**

**Reliable and ergonomic use**

- Durability thanks to robust construction with fine grained steel
- Easy handling due to ergonomic handles
- Reduced grinding of sheared weld, due to individual adjustment of shearing height
- Reduced wear of shear blades, thanks to adjustable stop screws
- Precise working result due to 4-fold downholder and double longitudinal guiding

**Easy and quick removal of welding beads**

- Individual adapted shear blades are pressed together by double-acting hydraulic cylinders
- No hot cracks on the weld, due to coincident shear blade attack from both sides



**TECHNICAL SPECIFICATIONS**

**ROTRIM**

Dimensions (L x W x H)	
with hand pump	~33" x 16" 13"
without hand pump	~33" x 14" x 8" (prepared for a hydraulic power pack)
Weight	
with hand pump	~101 lbs
without hand pump	~87 lbs (prepared for a hydraulic power pack)
Shear blades	~7 lbs
Shear force at max. operating pressure	
with hand pump	500 bar/200 kN
with hydraulic power pack	550 bar/220 kN
Max. travel	~6"
Filling capacity hydraulic oil	
with hand pump	Renolin MR 310/1.1 l
without hand pump	Renolin MR 310/0.6 l

Drive options: Energy/Lighting



**ACCESSORIES**

Shear blade sets available upon request.

# STRESSING PULLING BENDING



**ROPULL**

**Hydraulic Rail Pulling and Pushing Device**



**4 Roller-type Rail Bending Machine with hydraulic (roll) feed for bending grooved rails and vignol rails.**

**ITS BENEFITS. YOUR BENEFITS.**

**Robust machine. Correct rail bending.**

- Stable, stationary bending machine
- Easy insert of rails due to horizontal arranged bending roller
- Correct bending, also of longrails due to bearing shafts fitted on both sides
- Rollers equipped with wear resistant bearings

**Flexible and user-friendly.**

- Best visibility on bending roller for precise working
- Digital control display of the hydraulically controlled roll feed
- Double sided bending in a through-feed method possible
- Replaceable bending rollers for different rail type
- Moveable control box with digital control display

**TECHNICAL SPECIFICATIONS**

**ROBEND PLANT**

Dimensions (L x W x H)	~86.5" x 98.5" x 61.5"
Weight	~5511.5 lbs
Output	5 – 7,5 kW
Drive	Three-phase motor 400 V / 50 Hz
Motor protection class	IP54 ISO class F
Throughput speed	3 or 6 m /min
Smallest bending radius	8 m
Min. surplus rails	straight ~23.5"
Bending length	arbitrary
Bending roller	4

**ACCESSORIES**

- 8174661039 Bending rollers for vignol rails S54, S49, S41
- 8174661040 Bending rollers for grooved rails RI60, RI59, RI59N
- Other bending rollers on request.
- 8178250040 undercarriage with wheels





**For the bending of switch blades at switches**

A close fit of the switch blade on the stock rail is a precondition for a train travelling through the switch at the permitted speed, highest level of safety and as smoothly as possible. The railway switch regulations determine the permissible amount of lining.

- For switch maintenance
- After accidents to enable immediate trafficability until the switch blades are replaced.
- To increase or decrease the radius of the switch gauge in the area of the switch blade.
- For all commonly used flat bottom rails.
- Application for lining and removal possible by one person.
- The unit can be moved easily on the rail.
- The high bending force of 250 kN allows all types of bending work on the switch blade.
- Quick-release coupling to connect hand pump or hydraulic power pack



**TECHNICAL SPECIFICATIONS**

**ROBEND M Switch**

Drive	Hand pump, two-stage
Operating pressure	max. 700 bar
Compressive force	max. 250 kN
Travel	max. ~6"
Hydraulic oil synthetic	HLP 46 1.3 l
Dimensions (L x W x H)	~37" x 5" x 20"
Weight	~163 lbs

**ACCESSORIES**

Profile jaw sizes available upon request

- 8002228003 Pressure gauge mounting
- 8002228004 Wooden transport and storage box, with lockable lid and carrying handles

Other ROBEND accessories available upon request.



Profile jaws for rail section S49/S54



Pressure gauge mounting

**For bending and lining flat bottom rails up to approx. 60 kg/m (in y-axis), and also optionally for grooved rails (see additional equipment)**

- Alloy frame
- Replaceable rail claws
- Return of piston through spring load
- Easy operation in all work positions
- Optionally also available with pressure gauge
- Delivered in a wooden case



**TECHNICAL SPECIFICATIONS**

**ROBEND Rail**

Compressive force	550 kN
Piston travel	~4"
Dimensions (L x W x H)	~35" x 30" x 9"
Weight	~163 lbs

**ACCESSORIES**

8002238015 Claws for third rail with steel pressure piece

Other ROBEND accessories available upon request.



Claw and pressure piece for grooved rail



Grooved rail profile block

**For correcting a narrowed or widened gauge**

**ROGAUGE Iso 150**

- Can be fitted easily to the foot of the rail
- Adjustment via threaded spindle when in place
- Insulated from rail to rail
- For rails with a base width of (e.g. S49/54 and UIC 60) ~5" to 6"
- Gauge ~56.5"



**ROGAUGE Iso 05**

- 8249900017
- Suitable for fixed track (Distance concrete - rail 35 mm) and gravelled track
- Lightweight: ~33 lbs
- Isolated
- Gauge ~56.5"



**ROGAUGE**

- Not insulated from rail to rail
- Mounted by wrenching to the two grooved plates
- Adjustment when installed by means of a threaded spindle.
- Gauge ~56.5"



**TECHNICAL SPECIFICATIONS**

**ROGAUGE Iso 105**

**ROGAUGE Iso 05**

Dimensions

~73"

~68"

Weight

~55 lbs

~33 lbs

**For pulling rails in the ballast**

- For rails S49, S54, UIC60 up to a rail length of 180 m, depending on the composition of the permanent way.
- Can be used for drilled and undrilled rails
- Does not cause impressions or deformations of the rail
- ROSHOE S49, ROESHOE S54, ROESHOE UIC60

Other rail pulling shoes available upon request.



**TECHNICAL SPECIFICATIONS**

**ROSHOE**

Dimensions (L x W x H)

~14" x 7.5" x 11"

Weight

~84 lbs

**For pulling together or pushing apart 2 flat bottom rails in longitudinal direction**

**Standard design:**

- 1 hydraulic cylinder, double-acting, with carrying handle
- 2 clamping heads

Drive: hydraulic power pack or hand pump, see 24.70



**TECHNICAL SPECIFICATIONS**

**ROPULL HD**

Max. tensile/compressive force	60 kN/80 kN
Piston travel	~16"
Max. pressure in hydraulic system	100 bar
Dimensions (L x W x H)	
Clamping head S49	~7.5" x 10.5" x 22"
Distance jaws	~7" x 1.5" x 2.5"
Hydraulic cylinder	~37" x 4.5" x 7"
Weight	
Basic unit	~170 lbs
Hand pump see 8002412010	~17 lbs
Power pack see 8127500001	~64 lbs



**ACCESSORIES**

**Distance jaws**

Each device equipped with 2 x 2 pieces = 1 set

- 8002412011 set form B for S49/S54/35.7/35 kg/Np46/As41
- 8002412017 set for 115lb
- 8002412018 set for 136lb/132lb

Other distance jaws on request.  
Profile jaw sizes available upon request.

- 8002412008 Extension or pulling for gaps of over and up to ~46" 37" 79"
- 8002412016 Extension ~31.5"

- 8002412010 Hydraulic hand pump including hose set
  - with high-pressure hoses, ~79" long
  - max. pressure 100 bar (preset)
  - hydr. tank volume 1.3 l
  - precision drain valve

Other accessories available on request.

- 8127500001 Hydraulic system
  - Driven by Briggs & Stratton 4-stroke engine, output 2.6 kW at 3000 rpm
  - Robust double pump, with automatic changeover from low pressure to high pressure stage
  - 4-way valve with pressure relief valve, fully mounted on unit
  - 2 connecting hoses with quick-release couplings
  - Hydraulic tank volume 5 l
  - Delivery rate 1.8/0.9 l
  - Max. pressure 100 bar (preset)
  - Low noise level (73 dBA)
- 8002228003 Pressure Gauge mounting
- 8002228004 Wooden transport and storage box, with lockable lid and carrying handles

Other accessories available on request.



Distance jaw set for UIC60



**ITS BENEFITS. YOUR BENEFITS.**

**Flexibility due to selectable modular system**

- Standard cylinder aluminum
- Standard cylinder steel
- Hollow piston cylinder
- Standard versions for optionally draw bar and/or threaded bar system
- 3<sup>rd</sup> rail modules for execution at conductor rails

**Fast and structure gauge free installation and dismantling**

- Safe and easy handling
- Low weight of individual parts
- Simple assembly, no hoist required
- Drive on rail when fitted is possible, depending on the situation

**Hydraulic energy supply**

- Dependent on order
- Two-stage pump with automatic changeover from low-pressure (fast feed) to high-pressure range
- Hydraulic power pack
- Pressure changing unit

**USP Hollow piston cylinder**

- High traveling way ~8"
- Maximum safety due to forced guidance of the thread rods

**More information: Energy/Lighting**

TECHNICAL SPEC.	ROSTRESS HD Combi	ROSTRESS HD	ROSTRESS HD Combi	ROSTRESS HD
	STANDARD	HOLLOW PISTON CYLINDER	3 <sup>rd</sup> RAIL	RAIL REPLACEMENT
Tensile force	700 kN	700 kN	700 kN	700 kN
Compressive force	400 kN	/	400 kN	400 kN
Travel	~8"/15"	~8"	~15"	~15"
Dimensions (L x W x H)				
installed condition	~104" x 44" x 15"	~98" x 40" x 15"	~121" x 37" x 15"	~681" x 47" x 15"
Drawbar				
Type	Standard	Thread rods	Standard/Horseshoe	Thread rods
Length	~5 ft	Pieces of ~8 ft or 13 ft		~98"/158" components
Thread rods optionally combineable				
Weight				
Heaviest individual component	~73 lbs			
Hydraulic hand pump	~121 lbs			
Hydraulic power pack	~148 lbs			
Pressure changing unit	~33 lbs			
Obstructionless installation possible	yes	yes	no	yes

## ACCESSORIES

- 8749910001 Piston rod guard (for standard-cylinder aluminum)
- 9802470050 Transport box
- 8748980001 Hand trolley for Hydraulic power pack
- 8748980002 toolbox for Hydraulic power pack

### Power Units

- 8749910002 Hydraulic hand pump, for use with one unit  
Two stage pump with automatic changeover from low-pressure (fast feed) to high-pressure (work cycle); incl. hose set ~121 lbs
- 8743010004 Hydraulic motor unit, with hand pump for one or two units  
Two stage pump with automatic changeover from low-pressure (fast feed) to high-pressure (work cycle); ~141 lbs; ~30" x 21" x 21";  
Hose set for one unit: 87478920004  
Hose set for two units: 87478920004
- 8743051005V Pressure changing unit, for one unit if separate hydraulic hand pump (such as on 2 rail vehicle) is existing. 33 lbs; ~27" x 9" x 11";  
Hose set for one unit: 8747910004

### Hose sets

- 8747910004 From connecting hose to cylinders (if hoses for hydraulic power pack presently)
- 8747920004 connecting hoses to hydraulic power pack  
From connecting hose to cylinders

Supports (for obstructionless use at different rail profiles)  
Suitable for following rail types:

- 8747900004 90RE, 136RE, 140RE,
- 8747900005 115RE, 119RE, 132RE



Trolley for hydraulic unit



Toolbox



Hydraulic hand pump



Transport box upon request



Rail supports for obstructionless use



Piston rod guard for standard cylinder aluminum



Drawbar 1,52 m for standard versions

**For moving long-welded rails**

Robust steel design with maintenance-free ball bearings

## Other types

- For rails with max. base width of 170 mm or 230 mm
- with 50 mm bent side and base body inner dimension 170 mm or 220 mm

**TECHNICAL SPECIFICATIONS****ROCARRY**

Max. load	~1543 lbs
Inside roller dimension	~7"
Dimensions (L x W x H)	~10" x 5" x 4.5"
Weight	~16 lbs



**To remove stresses from the rail by striking the rail head sides. The vibrations generated in this way de-stress the rail.**

After removing the fasteners and fishplates, the rails should take up the length which corresponds to the current rail temperature. The machine works on both rails of the track simultaneously with two hammers. This removes stresses existing in the rail. At the same time, non-rail elements, such as rail pads, are loosened.



**ITS BENEFITS. YOUR BENEFITS.**

**Precise & powerful due to**

- Height-adjustable hammers which make it possible to set the contact point precisely
- Number of impacts continuously adjustable via gas activation: 45-60 impacts/min

**User-friendly due to**

- LED lighting on both sides which perfectly illuminates the work area
- Can be operated in both directions

**Safe due to**

- Easily lockable guard over hammer unit
- Engine can be started only if the guard is in place
- Dead man's brake on both sides
- Emergency stop push-button

**Low maintenance requirement due to**

- Centrifugal clutch

**TECHNICAL SPECIFICATIONS**

**ROLAX P4**

Air-cooled 4-cycle engine	HONDA GX200
Output	at 3600 rpm 4.1 kW
Dimensions (L x W x H)	~105" x 49" x 38"
Track gauge	~56.5"
Weight	~551 lbs
Number of impacts	continuously adjustable via gas activation, 45 – 60 impacts per rail at an engine speed of 3000 – 3600 rpm





**To heat up the rail to the required rail temperature, during the course of the rail neutralization prior to welding the ends of the rail.**

**ITS BENEFITS. YOUR BENEFITS.**

**Powerful and precise**

- High heat output due to liquid gas removal system
- Precise positioning thanks to stepwise adjustment of the burner height

**Safety for man and machine**

- Integrated hose rupture protection system
- Metered gas supply during the ignition of the gas, achieved by valve at the heating unit
- Heat protection of the superstructure of the track, thanks to the possibility to adjust the height of the burner
- Ergonomics with height-adjustable and foldable handles
- Safety precaution through integrated fire extinguisher

**Flexibility**

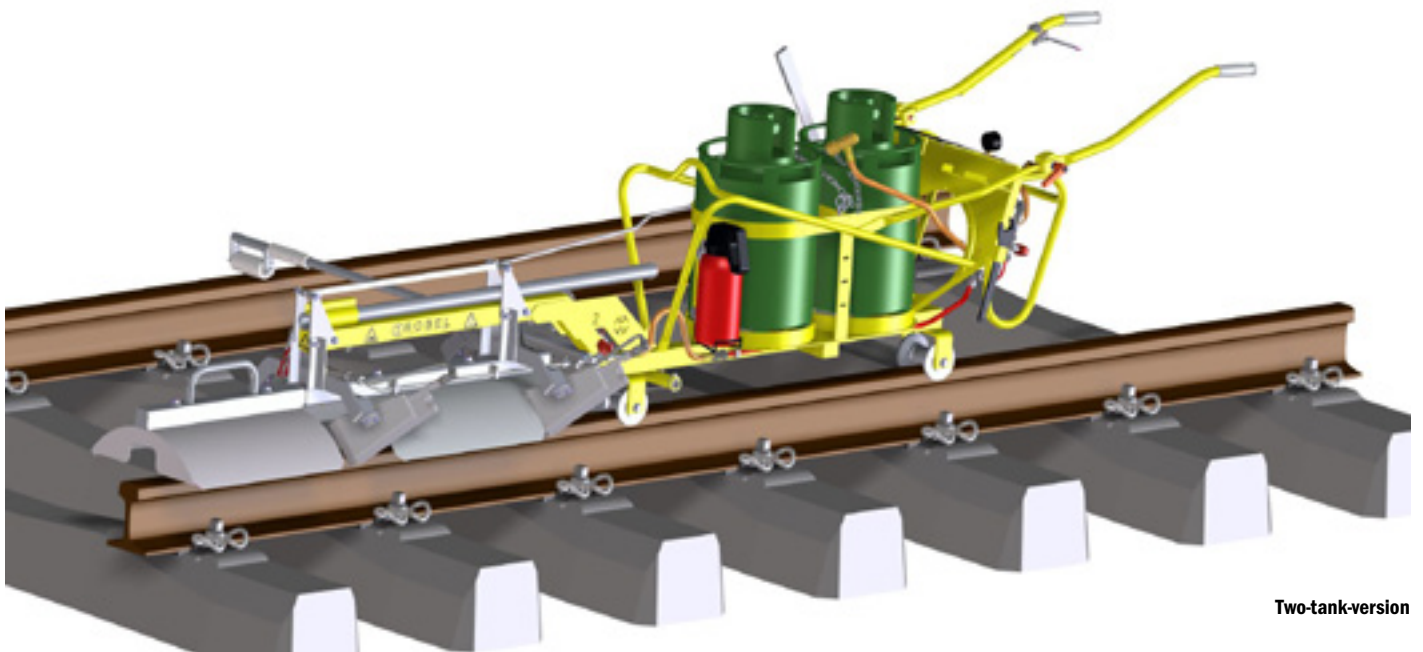
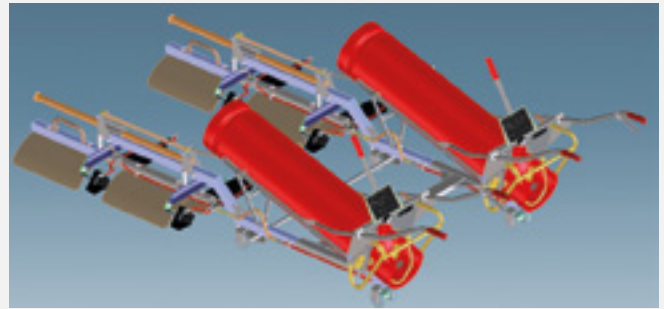
- Optional fail safe brake
- Optional Connecting beam for parallel use of two rail heaters

<b>TECHNICAL SPECIFICATIONS</b>	<b>ROHEAT</b>	<b>ROHEAT</b>
	<b>STANDARD-VERSION</b>	<b>TWO-TANK-VERSION</b>
Dimensions	~134" x 28" x 33"	~134" x 28" x 33"
Dimensions for transport	~91" x 23" x 35"	~91" x 23" x 35"
Weight without gas bottle	~183 lbs	~190 lbs

## ACCESSORIES

### Connecting beam for parallel use of two rail heaters

8668980003 Connection beam gauge ~39"/56.5"



Two-tank-version

# WRENCHING CLIPPING



**Wrenching-family**

**For tightening and loosening nuts and sleeper bolts.**

- With 2-stroke engine which drives the impact wrench mechanism via a centrifugal clutch, a reduction and reversing gearbox.
- Stable, robust design
- Easy operation in all work positions
- No transfer of wrenching moment to operator
- 1 inch square drive to accept the corresponding sockets
- Rotates left/right
- Vibration-damped handles

**TECHNICAL SPECIFICATIONS ROMPACKT P2 Portable**

Drive	air-cooled 2-cycle petrol engine
Type	Dolmar PS 7310
Power	3.5 kW (4.8 hp)
Torque	up to 2000 Nm, depending on joint hardness
Dimensions (L x W x H)	~26.5" x 18" x 12"
Weight	~51 lbs
Weight of a socket	~3.5 lbs

Available sockets can be found on page 58.



**For tightening and loosening nuts and sleeper bolts**

**ITS BENEFITS. YOUR BENEFITS.**

**Compact and robust**

- Centrifugal clutch and change gear
- 1 inch square drive to accept the corresponding sockets
- Battery version 30.20 with 90° adjustable handle, particularly for wrenching brackets
- Immediate usage

**Ergonomic and flexible**

- Height adjustable handle with battery version 30.20
- Low vibration operation



**TECHNICAL SPECIFICATIONS ROMPACKT P2 ROMPACKT P2 Lowvibe ROMPACKT B**

	STANDARD AIR-COOLED 2 cycle PETROL ENGINE	LOW VIBRATION AIR-COOLED 2 cycle PETROL ENGINE	BATTERY DC ELECTRICAL MOTOR
Type	without damping	with damping	without damping
Output	1.7 kW at 7120 rpm	1,7 kW at 7120 rpm	1600 W
Max. Torque	1700 Nm, depending on joint hardness	1700 Nm, depending on joint hardness	1800 Nm
			Number of tightening cycles: 500 (per 4 seconds)
Dimensions (L x W x H)	~27" x 15.5" x 14"	~27.5" x 15.5" x14"	~31" x 20" x 9.5"
Weight	~43 lbs	~47 lbs	~42 lbs (with battery)
Weight socket	~3.5 lbs	~3.5 lbs	~3.5 lbs (13.5 lbs)

Available sockets can be found on page 58.

**More information: Battery Technology**

# MAXIMUM PERFORMANCE. ACCURATE DOCUMENTATION.



## ITS BENEFITS. YOUR BENEFITS.

### Time savings, highly increased quality

- Patented: measurement with integrated torque spanner
- Automatic – precise– controlled
- No final tightening with torque spanner
- Torque is measured directly at the wrenching motor, it is not calculated via the hydraulic pressure.

### Intelligent electrical control

- Learning control with nominal/actual adjustment
- Consistently high wrenching precision
- No manual recalibration on the worksite
- Annual check in own workshop

### Reduces labour cost to minimum, makes wrenching easy

- Faster wrenching at 205 rpm
- High tightening/loosening torque for rusty rail fastenings and for dismantling screws without stalling the engine
- Wrenching mode selection at the push of a button

### Work result fully documented

- Recording of each wrenching process
- Captures wrenching frequency, kilometre marking and wrenching modes
- Recognises defective screws and damaged threads
- Output of coded results (log) via USB
- Auditable performance protects against future claims

### Carefully packaged

- Electrical lines and sensors protected in frame and handles
- Aluminium covers
- Increased operational safety - fewer downtimes
- Fewer spare parts and repairs
- No capital tied up in replacement machines

### Added value with the option of

- GPS link for precise information of working position in order to optimise reporting

## PRECISION WRENCHING.

### The next generation.

The fully hydraulic Precision Power Wrench ROBEL 30.73 PSM tightens and loosens every screw connection precisely to the specified torque. The combination of high spindle speed and high loosening torque accelerates the wrenching process, makes work easier and reduces costs. The 30.73 PSM consistently documents accurate measuring results which are captured exactly where they are taken. No longer required to undertake follow up checks.

## FOCUS ON OPERATOR

### Symbiotic relationship of ergonomics and efficiency

Ergonomic design safeguards the long-term retention of the workforce. Employees benefit from better health, companies benefit from greater efficiency.

### The ROBEL 30.73 PSM provides

- Maximum operator safety and comfort
- Increase in work quality

### due to:

- Operator posture minimising discomfort
- Weight of under ~220 lbs
- Optimum machine balance
- Adjustable handles
- Safe 2-hand control



TECHNICAL SPECIFICATIONS		ROWRENCH P4 Rec
Drive		Air-cooled 4 cycle petrol engine
Type		HONDA GX200
Output		4.3 kW at 3,600 rpm
Wrenching parameters		Speed (tightening and loosening) adjusts automatically (max. 205 rpm)
Loosening torque		max. 900 Nm
Tightening torque depending on the machine version		max. 500 Nm
Dimensions (L x W x H)		
Transport position		~60" x 19" x 26"
Working position		~82" x 19" x 38"
Weight		~218 lbs machine
		~13 lbs travelling gear
		~8 lbs outrigger

## ACCESSORIES

Available sockets can be found on page 58.

- 7739910001 Travelling gear
- 7730800001 Outrigger track gauge ~56.5"
- or
- 7730750001 Four-wheel travelling gear
- 7738950140 Extension ~3.9" with quick-chuck
- 7738930110 Penholder for marker
- 7738930120 Bottle holder
- 8328980100 Box for traversing gear
- 7738950110 Torque wrench adapter
- 9002501350 Torque wrench constant
- Oil change kit USB-stick (Only original is allowed to be used)



For tightening or loosening sleeper, hook and fishplate bolts.

### ITS BENEFITS. YOUR BENEFITS.

#### Optimum results

- High torque
- Electronic control for precise observance of set values
- Precise torque settings via potentiometer on control panel and visual check by operator
- 2-speed gearbox with helical gears for high efficiency
- Wrenching step carried out with push-button. Wrenching stopped automatically, thus highest accuracy and overload protection.
- Electric disc clutch for maximum durability

#### User-friendly

- Optimum illumination of working area with LED illumination of socket integrated into the gear case
- Quick-change chuck
- Protective engine frame with carrying handles and holder for 2 sockets
- It is possible to work without outrigger due to the extremely low centre of gravity.

#### Low maintenance requirement

- Due to no-maintenance electronic disc clutch
- Hardly any wear due to articulated sockets and non-friction roll behaviour for angled fasteners

#### Applications

Can be used for all wrenching operations for various types of track construction and gauges



**TECHNICAL SPECIFICATIONS****ROWRENCH P4 RKS**

Drive	air-cooled 4 cycle petrol engine
Type	HONDA GX 200
Output	4.3 kW at 3600 rpm Spindle speed
No-load speed	200 rpm
Load speed	70 rpm
Tightening torque indicator	max. 999 Nm
Adjustment range for screwing in	150 Nm to 350 Nm/420 Nm to 999 Nm
Loosening/tightening torque	max. 1000 Nm
Dimensions (L x W x H)	~80" x 24" x 30"
Weight without outrigger (outrigger ~9 lbs)	~203 lbs

**ACCESSORIES****Transverse travelling gear**

- 8050750001 RKS, four-wheel, instead of two-wheel monorail trolley with outrigger, gauge ~56 ½", incl. extension ~3.9" square output drive
- 8003082015 Four-wheel, gauge 1435 mm
- 8338950150 Extension, ~4", square output drive  
Extension needed only if transverse travelling gear is ordered and supplied at a later time. When ordering a transverse travelling gear with the power wrench, the extension is already included in the price.
- 8329900037 Parking brake for transverse travelling gear
- 9000100065 Protective hood (tarpaulin), bright yellow, made of Trevira fabric, PVC coated, hemmed. With nickel-plated eyelets on both long sides.  
Dimensions: ~75" x 24" x 24"

**Fish bolt spanner**

- 8003182001 31.82 one-sided design; without socket
- 8003062052 Socket, hex A/F 39 SRAUG one-sided design; without socket

Other sockets (also articulated for straight output drive) can be found on page 58.



Fish bolt spanner 31.82



Hood-shaped cover



Socket, hex. A/F 39 Sraug



**WITH PROVEN TECHNOLOGY  
WEAR RESISTANT WRENCHING**



**ITS BENEFITS. YOUR BENEFITS.**

**Reliable wrenching method, precise results**

- Uniform repeat wrenching due to precisely adjustable torque
- Checking of torque on pressure gauge display
- Selection between two gears depending on stiffness of screw
- Fast changeover to maximum torque without changing the torque setting

**Robust construction, minimised maintenance costs**

- Long service life due to ROBEL high-performance clutch
- Low maintenance costs due to permanent oil lubrication of clutch in oil bath

**Ergonomic design**

- Low weight and compact size with folding guide handles
- Large field of view due to LED illumination of surrounding area
- Height-adjustable guide handles

**Flexible use**

- Working possible without outrigger due to low centre of gravity
- Wrenching of all screwed connections on any type of track as length of spindle can be adapted
- Quick-change chuck for fast changing of sockets

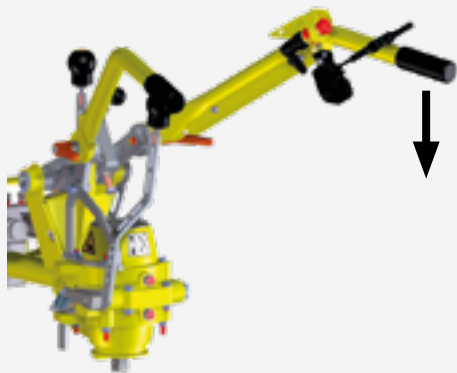
<b>TECHNICAL SPEC.</b>	<b>ROWRENCH P4 200 2.0</b>	<b>ROWRENCH P4 270 2.0</b>	<b>ROWRENCH E 2.0</b>	<b>ROWRENCH D 2.0</b>
Drive	Air-cooled 4 cycle petrol engine	Air-cooled 3 cylce petrol engine		Air-cooled 4 cycle diesel engine
Type	Honda GX200	Honda GX200		Hatz 1B20
Output	4.3 kW at 3600 rpm	6.3 kW at 3600 rpm		4.9 kW at 3800 rpm
Spindle speed				
No-load speed, max.	200 rpm	190 rpm		200 rpm
load speed	71 rpm	67 rpm		71 rpm
Adjustable tightening torque	from 140 to 300 Nm	from 140 to 300 Nm		from 140 to 300 Nm
Momentary loosening torque	up to 1000 Nm	up to 1000 Nm		up to 1000 Nm
Travelling gear	2-rail transverse travelling gear, available for all gauges 1-rail travelling gear with outrigger, available for all gauges			
Dimensions (L x W x H)	~75" x 24" x 24-31"	~75" x 24" x 24-31"	~75" x 24" x 24-31"	~75" x 24" x 24-31"
Transport position (L x W x H)	~59" x 24" x 23"	~61" x 23" x 23"	~59" x 19" x 23"	~59" x 24" x 23"
Weight	~205 lbs	~232 lbs	~256 lbs	~232 lbs

## CONFIGURATIONS

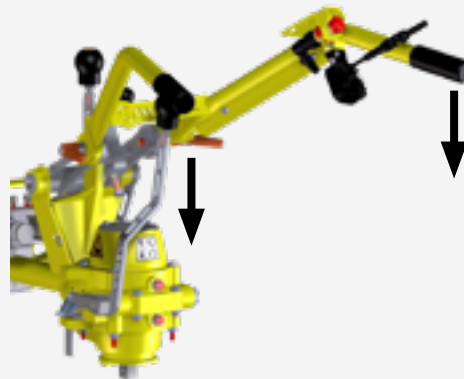
### 1. CHOICE OF DRIVES (see Technical Specifications)

### 2. CHOICE OF HEIGHT-ADJUSTABLE GUIDE HANDLES

a. for depressing on right-hand side only



b. for depressing on both sides



### 3. CHOICE OF TRAVELLING GEAR AND GAUGE

a. monorail travelling gear with outrigger



b. transverse travelling gear, four wheels



c. transverse travelling gear with cant



### 4. CHOICE OF SOCKETS

a. one piece/standard impact socket



b. articulated/flexible two piece socket



## ACCESSORIES

Available sockets can be found on page 58.

### Other ROWRENCH Accessories

#### Fish bolt spanner

8003182001 31.82 one-sided design; without socket

#### Travelling gear with rubber wheels

8320820001 for working in areas without rails

#### Socket holder

8328900004 to fit sockets near spindle

#### Toolbox

8329910001 Toolbox combined with transverse travelling gear

#### Tarpaulin

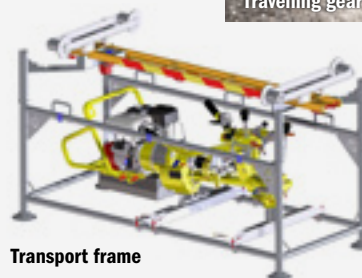
9000100065 for best protection from the weather with eyelets (yellow)

#### Torque meter

8869900006 Torque meter 86.12 to calibrate the machine

7738960001 Transport frame

8321570120V Handles





**For all drilling and wrenching tasks that arise in track construction. Especially suitable for dowel renovation.**

- Ideal for all fast wrenching tasks on rails, switches and other locations
- Powerful, robust design
- Easy operation in all work positions
- No transfer of wrenching moment to operator
- Rotates left/right
- Mechanical emergency activation of servo hydraulics
- LED work light
- With engine stop

**TECHNICAL SPECIFICATIONS ROWRENCH P4 Drill**

Drive	air-cooled 4 cycle petrol engine
Type	Honda GX 270
Output	6.3 kW at 3600 rpm
Spindle speed	
No-load speed	175 rpm
Load speed	67 rpm
Max. drill bit diameter	~1.5"
Max. drilling depth	~7"
Dimensions (L x W x H)	~83" x 24" x 30"
Weight incl. outrigger	~271 lbs

**ACCESSORIES**

Available sockets can be found on page 58.

Drilling bit sizes available upon request.

**Other ROWRENCH Accessories.**

- 8329900037 Parking brake
- 8329910001 Ballast box (for transverse travelling gear)
- 8003182001 Fish Bolt Spanner 31.82, one-sided design; without socket

## ROBOLT Fish Bolt Spanner

31.82

- For ROBEL 30.82 and 30.82 RKS Universal Power Wrenches, 30.83 and 30.71 Wrenching Machines
- Single-sided design
- Weight ~19 lbs



## ROTORQUE Torque Meter

86.12

### To set and check the torque of power wrenches

- Quick fitting to the quick-change chuck of ROBEL power wrenches
- Drive socket square 3/4 inch
- Reference mark for torque 150/200/250 Nm
- Weight ~11 lbs

### ACCESSORIES

- 8869900002 Wrenching tool A/F 36
- 8008612003 Wrenching tool A/F 39
- 9002500143 Wrenching tool A/F 41
- 8008612004 Wrenching tool rect. 21X28



## ROTORQUE + Torque Meter

86.12+

### To set and check the torque of power wrenches

By layering the disc springs different wrenching torques (joints) can be simulated. E.g. permanent way old/new, W permanent way rail clip 14 old/new, etc.

- Fastening on track with clamping screw
- Obstructionless
- Measuring range 150 to 450 Nm
- ~28" x 12" x 10"
- Weight ~55 lbs





**PATENTED TOOLS.**  
Powerful clipping of FE/FC (FCx).

**ROCLIP FC and FE**

**ITS BENEFITS. YOUR BENEFITS.**

**Wide range of application, high performance**

- Installing and removing of FC and FE (FCx) type Fastclips
- Quick and easy to change from installing to removing operation using patented tool
- Load relief to operator due to rollers on the clipping module to optimize center of weight of machine in version FE/FCx

**Strong machine, easy clipping**

- Clipping is triggered by a push-button on the handle
- Hassle free operation without time-consuming adjustments
- Works on heavily corroded clips due to strong high-performance components

**Flexible and practical use**

- Handles can be individually adjusted in height to the operator preference
- Optimal view of the work area, also at night thanks to LEDs mounted on the handles

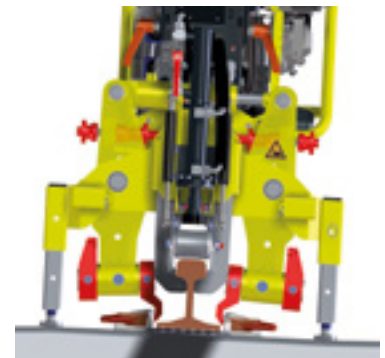
**Optional Sleeper lifting unit**

- Slight and fast lifting of low-lying sleepers



**ROCLIP P4 FC**

**Sleeperlifting device  
Example FE Clip**



<b>TECHNICAL SPECIFICATIONS</b>	<b>ROCLIP P4 FC</b>	<b>ROCLIP D FC</b>	<b>ROCLIP P4 FC/FE (FCx)</b>
Drive	4 cycle petrol engine	diesel engine	4 cycle petrol engine
Type	HONDA GX 200	Hatz 1B30	HONDA GX 200
Output	4.3 kW at 3600 rpm	5.0 kW at 3600 rpm	4.1 kW at 3800 rpm
Weight machine			
Without sleeper lifting device	~295 lbs	~467 lbs	~359 lbs
Weight machine			
With sleeper lifting device	~342 lbs	~514 lbs	~375 lbs
Outrigger gear	~101 lbs	~101 lbs	~101 lbs
Dimensions (L x W x H)	~77" x 24" x 38"	~77" x 24" x 38"	~77" x 25.5" x 38"
Outrigger gear for ~56.5" gauge (other gauges are available on request)			

## ACCESSORIES

### Available Fastclip tools

#### VERSION 1 WITHOUT SLEEPERLIFTING DEVICE

##### Clip application

- 8254220001 Clip 125
- 8254220002 Clip 135
- 8254220007 Wide Clip 125
- 8254220008 Wide Clip 135

##### Clip removal

- 8254220019 Standard
- 8254220013 Without stop
- 8254220009 Simple design, smooth
- 8254220004 With nose
- 8254220003 Removal disc, general
- 8254220010 Removal disc, wide, general

#### VERSION 3 WITH SLEEPERLIFTING DEVICE

##### Clip application

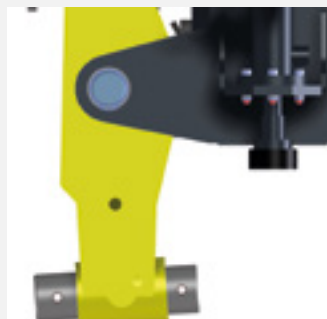
- 8254220011 Clip 135
- 8254220012 Clip 125

##### Clip removal

- 8254220019 Standard
  - 8254220013 Without stop
  - 8254220009 Smooth
  - 8259900008 Transverse travelling gear. Please request info for gauges other than ~56.5"
  - 8259910005 Parking brake for transverse travelling gear
  - 9000100065 Hood-shaped cover
- Converter for clips of different length (from ~4.9" to 5.3" and vice versa)

##### Insertion tool for all types of application

- 8254220180 125 clip with lifting point for sleeper lifting
- 8254220170 135 clip with lifting point for sleeper lifting
- 8254220100 125 clip without sleeper lifting
- 8254220120 135 clip without sleeper lifting



## ROCLIP Clipping Device

34.90

### SLEEPER LIFTING UNIT

To manually lift sleepers

#### TECHNICAL SPECIFICATIONS

#### ROCLIP M Lift

Length	~39"
Weight	~18 lbs



### INSERTION TOOL

To manually insert Pandrol Fastclips

#### TECHNICAL SPECIFICATIONS

#### ROCLIP M Extract

Length	~39"
Weight	~18 lbs



### INSERTION TOOL

To manually insert Pandrol Fastclips

#### TECHNICAL SPECIFICATIONS

#### ROCLIP M Insert

Length	~43"
Weight	~22 lbs



**Ratchet spanner for clockwise and counter-clockwise rotation of flat fish-plates, for hexagon nuts, A/F 39, with 2 lever arms.**

- Without inserts, for flat fish-plates; hexagon nut A/F 39 mm
- With inserts for angle fish-plates and flat fish-plates; hexagon nuts A/F 39 mm and other dimensions



**TECHNICAL SPECIFICATIONS** **ROTOOL Bolt One**

Length	~29"
Weight	~14 lbs

**ACCESSORIES**

Unique Spanner Inserts Designed for the 35.01  
For use with angle fish-plates (2 pcs are required)

- 9891040135 A/F 32
- 9891040137 A/F 33
- 9891040139 A/F 34
- 8910440145 A/F 36

- 9891040147 A/F 38
- 8910440151 A/F 39
- 9891040155 A/F 42
- 9891040161 A/F 45
- 9891040163 A/F 46



Insert A/F 39

**For use with fish-plates and for general wrenching work**

**Light-weight, robust & flexible**

- Ratchet spanner in partial aluminium construction
- Sturdy coarse ratchet
- Inserts reversible for left-hand/right-hand rotation
- Locking with ball stop
- Socket adapter 1"



**TECHNICAL SPECIFICATIONS**

**ROTOOL Bolt Two**

Length	~29"
Weight	~14 lbs

**ACCESSORIES**

Available sockets can be found on page 58.



Socket A/F 36

**Socket Wrench for selective wrenching.**

**Sleeper bolts**

- ROTOOL Socket Sq 36.01 (square head DIN 5913, A/F ~0.5" x 0.5" / 0.75" x 0.75")
- ROTOOL Socket Rect 36.02 (square head DIN 5914, A/F ~0.5" x 1" / 0.75" x 1.25")

**Nuts**

- ROTOOL Socket Hex 36.03 (hex head, e.g. DIN 3129, A/F 33 or ~1.5")

**Universal wrenching**

- ROTOOL Socket Vario 36.04 with 1 inch universal square mounting position for flexible use various sockets.

AF = width of nuts or sockets across flats



TECHN.SPEC.	ROTOOL Socket Sq	ROTOOL Socket Rect	ROTOOL Socket Hex	ROTOOL Socket Vario
Height	~38.5"	~38.5	~38.5"	~37.5"
Width	~38.5"	~29.5"	~38.5"	~29.5"
Weight	~14 lbs	~14 lbs	~16 lbs	~13.5 lbs

The support lever is an installation aid which prevents plastic dowels from being raised from their installation positions while the sleeper bolt is removed for the required maintenance work.

38.01 Support lever for rail type S49/54

38.01 Support lever for rail type UIC60



TECHNICAL SPECIFICATIONS	ROTOOL Fix UIC 60	ROTOOL Fix S49/54
Length	~59"	~59"
Width	~8"	~7"
Height	~3.5"	~3.5"
Weight	~11.5 lbs	~11.5 lbs



# Railroad Impact Sockets

## Accessories and unique sockets

- 1" Drive Impact Extension – 13"
- 1" Drive HEX Bit Impact Socket with Standard Hex Bit – 1"
- 1" Drive Impact Universal Join ("Swivel")
- 1" Drive Combination Long Length Budd Wheel Impact Socket ( 1-1/2" Hex x 13/16" Square)

## 6-Point Standard (additional sizes available upon request)

- 7/8"
- 1-1/8"
- 1-5/8"
- 1-7/16"
- 1-1/2"
- 2"
- 2-13/16"

## 6-Point Deep (additional sizes available upon request)

- 7/8"
- 1-1/8"
- 1-5/8"
- 1-7/16"
- 1-1/2"
- 2"
- 2-13/16"

## 8-Point Standard (additional sizes available upon request)

- 1" Drive 8 Point Standard Impact Socket
- 7/8"
- 1-1/8"
- 1-5/8"
- 1-7/16"
- 1-1/2"
- 2"
- 2-13/16"

## 8-Point Standard (additional sizes available upon request)

- 1" Drive 8 Point Deep Impact Socket
- 7/8"
- 1-1/8"
- 1-5/8"
- 1-7/16"
- 1-1/2"
- 2"
- 2-13/16"

## Tapered Sockets (additional sizes available upon request)

- 1" Drive 2" Tapered Impact Socket – 8 Point
- 1" Drive 1-7/8" Tapered Impact Socket – 8 point
- 1" Drive 1-5/8" Tapered Impact Socket – 8 Point

## TORX (additional sizes available upon request)

- TORX Bit TX-70, Hex Shank, 3"
- TORX Socket Adaptor 1" Drive, 5/8" Hex
- TORX Split Pin for 5/8" Hex Bit

Sockets for Lag Screws (additional sizes available upon request)

## Extensions for ROBEL Power Wrenches

- 1" Drive "Long" Extension
- 1" Drive "Short" Extension
- ROBEL Drive 1-piece "Short" Socket extension
- ROBEL Drive 2-piece "Long" Socket extension

## ROBEL 1 and 2 Piece Sockets includes

- standard one piece sockets
- articulated/flexible two piece sockets

Sizes available upon request.

# LIFTING LOADING TRANSPORTING



**ROALIGN**

**Hydraulic Track Lifting Machine with Slewing Device**

## ROLIFT Rail Lifting Device

40.05

For lifting and fixing rails, e.g. S49, S54 and UIC60, via hand lever

- To be used for replacing rail pads and grooved base plates
- For all types of track used by DB
- For other special types of track upon request
- Hand lever equipped with above-dead-centre safety device
- Additional locking hook



### TECHNICAL SPECIFICATIONS

### ROLIFT 0.75

Max. load	~1653.5 lbs
Lifting height	4 different heights adjustable 2 heights for grooved plate support, 2 heights for sleeper support
Dimensions (L x W x H)	~43" x 16" x 3"
Weight	~33 lbs

## ROCARRY Rail Carrying Tongs

42.02

For carrying and lifting rails



### TECHNICAL SPECIFICATIONS

### ROCARRY M Rail

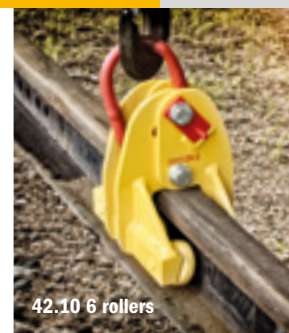
Rail head width up to	~3"
Rail head height up to	~2.5"
Dimensions (L x W x H)	~41" x 3" x 16"
Weight	~17 lbs

## ROCARRY Rail Carrying Roller Tongs with Locking Bolt

42.10

**For lifting and transporting rails**  
The rail is only allowed to be lifted or lowered vertical.

- Rail Mover 43.02, 4 carrying rollers
- Increased with suspension eye, 6 carrying rollers



42.10 6 rollers

TECHNICAL SPEC.	ROCARRY Vignol 0,5	ROCARRY Vignol 1,5	ROCARRY 3rd 1,5	ROCARRY Vignol 3
Perm. carrying capacity	0.5 t	1.5 t	1.5 t	3 t
Suitable for	small flat bottom rail	flat bottom rail	conductor rail	flat bottom rail
Dimensions (L x W x H)	8" x 6.5" x 9"	10.5" x 6.5" x 12"	10.5" x 6.5" x 11.5"	10.5" x 8.5" x 12"
Weight	~14 lbs	~39 lbs	~31 lbs	~55 lbs
Rollers	4 rollers	4 rollers	4 rollers	6 rollers

## ROCARRY Rail Carrying Tongs with Safety Latch

42.11

**For lifting and transporting rails**

- For Rail Loaders 40.44 and 40.51

TECHNICAL SPECIFICATIONS	ROCARRY 1,5 Latch
Perm. carrying capacity	1.5 t
Suitable for	flat bottom rail
Dimensions (L x W x H)	~4" x 6.5" x 12"
Weight	~12 lbs

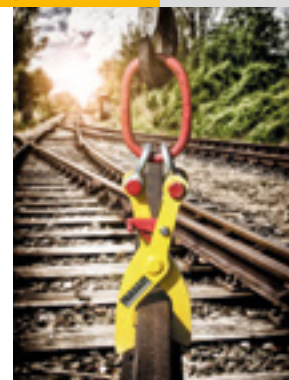


## ROCARRY Rail Carrying Tongs with Suspension Eye (crane hook securing) and Locking Device

42.22

**For lifting and transporting rails**

- with suspension eye (crane hook securing) and locking device,
  - sturdy design
  - with 3 lifting claws
  - Carrying capacity 3 t
- Opens automatically when touching down on rail head
- Designs available for different types of flat bottom rails.  
Ask your ROBEL contact about your specific type of flat bottom rail.



TECHNICAL SPECIFICATIONS	ROCARRY 3 Eye
Perm. carrying capacity	3 t
Suitable for	grooved rail, thick web rail
Dimensions (L x W x H)	~4.5" x 5" x 15.5"
Weight	~24 lbs

**For lifting and moving rails of any length longitudinally and laterally when used with an appropriate number of devices. Recommended distance between devices approx. 10 m.**

- Consists of 2 supports, 1 cross beam, 1 travelling crab and 1 pair of roller carrying tongs
- Support with holes for adjusting height of cross beam by locking pin, with fold-down carrying handles, wooden feet and running rollers
- Easy to dismantle for transport to and from the work site
- ROBEL 41.04 Travelling Crab with rack and pinion thread, safety crank and load pressure brake, ROBEL 42.10 Roller Carrying Tongs self-clamping, with hardened running rollers for moving rails longitudinally



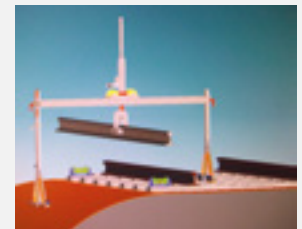
**TECHNICAL SPECIFICATIONS**

**ROMOVE 1,5**

Permissible lifting capacity max.	1.5 t			
Vertical travel	31.5"			
Running distance of travelling crab	75"			
Support width	88"			
Max. head width of rail	3"			
Max. head height of rail	2"			
Designation	ROBEL 41.04 Travelling crab with rack and pinion and hook	42.10 Roller carrying tongs	Cross beam	Support
Dimensions (L x W x H)	45" x 14" x 12"	12" x 10.5" x 6.5"	96.5" x 8.5" x 5"	46.5" x 27.5" x 5"
Weight	~53 lbs	~35 lbs	~99 lbs	~35 lbs

**ACCESSORIES**

8379910001 Extension ~13"



**For lifting and moving rails longitudinally and laterally**

- Compact device in light-weight construction, standard design in aluminium
- Particularly suited for the safe, quick and efficient moving of fitted pieces, e.g. in case of fractured rails, for insulated joints, etc.
- Consists of 2 supports, 1 cross beam, 1 travelling crab with hydraulic lifting device
- The device can be dismantled for transport and can be re-assembled easily and quickly as required



## TECHNICAL SPECIFICATIONS

## REMOVE 0,5 Alu

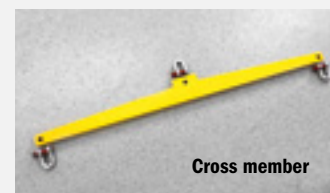
Permissible lifting capacity max.	~1102 lbs
Vertical travel	~14"
Running distance of travelling crab	~35.5"
Support width	53"
Max. head width of rail similar to rail type UIC60 head width	~3"
Max. head height of rail similar to rail type UIC60 head height	~2"
Dimensions (L x W x H)	65" x 30" x 55"
Weight basic device	~60 lbs

## ACCESSORIES

8428420012 Rail Carrying Roller Tongs ROBEL 42.10 Compact  
In specially low construction; aluminium design,  
with suspension pin; self-clamping with hardened  
running rollers

- Roller distance ~6"
- For moving rails longitudinally
- Permitted carrying capacity 0.6 US tons

8378100001 Cross member, when using 2 sets of rail carrying  
roller tongs. For picking up fitted pieces (e.g. insulated  
joint); length of cross member ~45"





**For continuous gradual positioning of rails to the desired track gauge. Hydraulic rail tongs grip the rail heads, hold them securely without turning or tilting and move the rails outward or inward.**

### ITS BENEFITS. YOUR BENEFITS.

#### Profitability

- High performance, especially for long rails
- Automatic adjustment to the track gauge during travel
- Ready for use straight away
  - For travel to and from the work site the carrier frame is slewed into the permitted wagon profile by means of the rotatable travelling gear.
  - Auxiliary rubber wheels for turning as well as rerailing and unrailling at level crossings

#### Wide range of use

- Hydraulic cylinders can be mounted on the inside or outside, enabling work on track gauges 830 mm to 3530 mm
- With the use of a pressure booster various hydraulically operated tools can be utilised. (Saving a hydraulic unit)

#### User-friendly and safe

- High occupational safety due to engine stop and rail tongs protected from turning or tilting
- Roof protects from adverse weather
- LED working lights for good visibility

## TECHNICAL SPECIFICATIONS

## ROTHREAD D

Drive	air-cooled 4 cycle diesel engine
Type	HATZ 1 D81 "Silent Pac"
Output	7.2 kW at 2,000 rpm
Fuel tank capacity	~5.5 gallons
Hydraulic system operating pressure	50/160 bar
Hydraulic oil reservoir	35 l
Electrical system battery	12 V, 60 Ah
Lifting capacity	6 t
Vertical travel max.	~31.5"
Outward expansion force	30 kN
Inward expansion force	15 kN
Gauge	~37.5" – 139"
Wheel base	~31.5"
Wheel diameter double wheel flanges	~12
Max. travelling speed	~8 mph
Max. negotiable gradient	25 ‰
Dimensions (L x W x H)	~67" x 161" x 71"
Weight without auxiliary equipment	~1.5 t

## ACCESSORIES

- 9891041960 Hood-shaped cover of strong, fabric-reinforced PVC sheet
- 8437790001 Hydraulic connection for secondary equipment, e.g. for ROBEL 24.12 Rail Pulling and Pushing Device
- 8431920010 Holders incl. hose set
- 8002412019 Clamping head and cylinder for pulling rails



## ROTOOL Wooden Sleeper Carrying Tong

44.17

**For manual lifting of sleepers.**

Heavy duty DB design made of steel.



## TECHNICAL SPECIFICATIONS

## ROTOOL W-Tong

Width up to	~10.5"
Height up to	~6.5"
Dimensions (L x W x H)	~39.5" x 2.5" x 17.5"
Weight	~17 lbs



**For manual lifting of sleepers.**

Heavy duty DB design in steel.



**TECHNICAL SPECIFICATIONS**

**ROTOOL C-Tong**

Width up to	~11"
Height up to	~8"
Dimensions (L x W x H)	~41.5" x 4" x 25"
Weight	~22 lbs

**For lifting and lowering loads, e.g. track panels, rails etc.  
Compliant with Accident Prevention Guidelines for Winches,  
Lifting and Pulling Devices, BGV D8 (EN 45000).**

- Solid, rugged design with large reinforced foot plate
- Safety crank with load pressure brake and foldable handle



**TECHNICAL SPEC.**

**ROJACK Ratchet 3**

**ROJACK Ratchet 5**

**ROJACK Ratchet 7,5**

**ROJACK Ratchet 10**

Designation	46.43	46.45	46.47	46.50
max. lifting capacity	3 t	5 t	7.5 t	10 t
max. lifting height	~13.5"	~12"	~12"	~12"
Partial lift per ratchet	~0.03"	~0.015"	~0.015"	~0.02"
Lift per crank handle turn	~0.3"	~0.15"	~0.15"	~0.15"
Excavation height	~2.5"	~2.5"	~2.5"	~3"
Dimensions (L x W x H)	11.5" x 8.5" x 28"	11.5" x 9" x 28"	11.5" x 9" x 28"	13" x 10" x 31"
Weight	~54 lbs	~65 lbs	~75 lbs	~101 lbs

## ROJACK Mechanical Track Jack

47.14

For continuously adjustable and precise lifting of rails



Using T-bar socket wrench



Using crank wrench

### TECHNICAL SPECIFICATIONS ROJACK 7,5

Max. lifting capacity	7.5 t
Max. lifting height	~6"
Excavation height	~3"
Dimensions (L x W x H) without lever	20.5" x 8" x 10"
Weight	~34 lbs

### ACCESSOIRES

- 8917513301 Socket wrench
- 9804714001 Crank wrench
- 8917513203 Insert

## ROJACK Hydraulical Track Jack

47.17

For vertical lifting and setting down a rail lifter

- Consists of base plate, piston with cylinder, pump and oil reservoir
- Robust and particularly compact design
- Easy to use thanks to detachable hand lever
- Quick-action lowering device
- Lifting cylinder equipped with lifting nose as well as structured lifting area at the head



### TECHNICAL SPECIFICATIONS

### ROJACK HD 6,5

Max. lifting capacity	6.5 t
Max. lifting height	~3"
Excavation height	~2"
Dimensions (L x W x H) without lever	~11.5" x 7" x 7"
Weight	~38 lbs

For lifting, lining and slewing tracks or entire track panels

**ITS BENEFITS. YOUR BENEFITS.**

**Perfect work quality & efficiency**

- High lifting capacity of 20 t and slewing force of 4.25 t
- Rail tongs lift rail horizontally
- Ballast scraper: running surface always clear of ballast
- 12 V socket
- Engine stop button

**Long service life & high availability**

- Hydrostatic drive gear
- ~5.3 gallons diesel tank capacity
- Flexible push-fit rubber wheels enable turning and unrailling at level crossings
- Optimum lifting point for transport due to lifting cross member
- Hydraulic oil filter with contamination indicator and replaceable filter element

**Health & Safety**

- Exhaust gas routing away from the operator
- Special sound-insulated design "Silent Pac"
- Optimised safeguards on hydraulic hoses, grease nipples, valves, adapters etc.
- Protection from weather due to easily adjustable and removable roof
- Heated seats (optional)

**Applications**

- During lifting work on switches
- During track tamping
- For insulated joint maintenance
- For lifting rails to replace rail pads
- For lifting and slewing track panels



**TECHNICAL SPECIFICATIONS**

**ROALIGN D**

Engine	air-cooled single-cylinder 4 cycle diesel engine; special sound-insulated design "Silent Pac"
Output	at 2000 rpm 7.2 kW (9.8 hp)
Fuel tank capacity	~5.5 gl
Performance	
Lifting capacity	at 150 bar 200 kN (20 t)
Lifting height	continuously adjustable 0 to ~35.5"
Slewing force	at 150 bar 42.5 kN (4.25 t)
Slewing range	continuously adjustable 0 to ~9"
Gauge	~56.5"
Self-propelled speed	continuously adjustable, forward and backward 0 to 8 mph
Dimensions (L x W x H)	~67" x 123" x 77"
Weight (without auxiliary equipment)	~3500 lbs
Upon request for additional charge	different track gauges, tarpaulin and much more

**ACCESSORIES**

9000100064 Hood-shaped cover	8478400032 Off-Tracking Equipment
8475520024 Driver's seat with heated seat	8478100032 Lifting Beam Short
8475200032 Roofing	

# ROLLY Light Track Trolley

51.12

**For transporting material, equipment and tools by rail. A large number of variations for different track gauges available with additional equipment.**

- Light-weight, sturdy vehicle with a platform made of perforated aluminium plates with a non-slip surface
- No accumulation of water or dirt
- Ball bearing synthetic running wheels/optionally sheet steel jacketed
- Carrying handles on the sides
- Parking brake acting on two wheels

Various designs upon request.



## TECHNICAL SPECIFICATIONS

## ROLLY 0,7

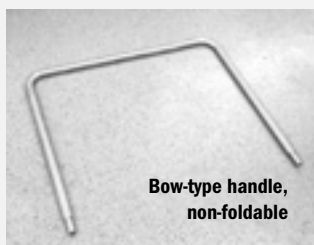
Aluminium design	
Permitted carrying capacity max.	~1500 lbs
Gauge	~56.5"
Running wheel diameter	~3.5"
Dimensions (platform)	~31.5" x 64"
Weight	~65 lbs

## ACCESSORIES

- 9805112016 Bow-type handle, non-foldable (mounting kit)
- 9805112001 Foldable bow-type handle with integrated dead man's brake (mounting kit), can be used for gauges ~56.5" – 60"
- 8005112013 Brake rod to sleeper crib

### For screwed design

- 9869120035 Dead man's brake
- 9869150035 Bow-type handle



**Safe transport on four-wheeled trolley**

- Transports long-welded rails, track construction equipment, tools and construction parts
- Transport of long and extensive load by combining up to four devices with connecting rods

**Options**

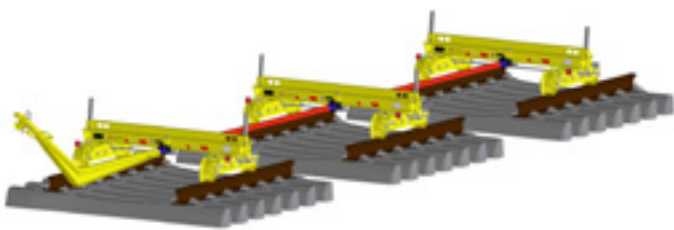
- Pivot plate with push-fit uprights, swivelling range approx. +/- 8°
- With or without parking brake

**Version 5**

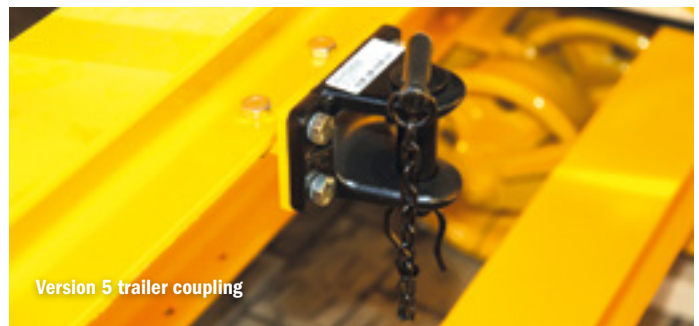
- Device approval for operating and construction tracks (DIN EN 15945)
- Parking brake acts on all four wheels
- Optional trailer coupling on both sides and connecting rods



Version 5



Version 5



Version 5 trailer coupling

TECHNICAL SPEC.	<b>ROLLY 15</b> VERSION 2	<b>ROLLY 15</b> VERSION 3	<b>ROLLY 15</b> VERSION 5	<b>ROLLY 15</b> VERSION 6
Standard design	without pivot plate	with pivot plate	with or without pivot plate	with or without pivot plate
Permissible load	15 t	15 t	15 t	15 t
Wheelbase	~19"	~19"	~56.5"	~56.5"
Cross beam length	~75"	~75"	~75"	~75"
Running wheel diameter	~10"	~10"	~10"	~10"
Max. permitted speed	~12.5 mph	~12.5 mph	~12.5 mph	~12.5 mph
Dimensions (L x W x H)	30.5" x 75" x 14"	30.5" x 75" x 19.5"	68" x 75" x 19.5" or 68" x 75" x 15.5"	68" x 75" x 19.5" or 68" x 75" x 15.5"
Gauge	~56.5"	~56.5"	~56.5"	~56.5"
Weight	~412 lbs	~560 lbs	~963 lbs or 844 lbs	~741 lbs or 622 lbs
Trailer coupling	without	without	incl. 2	without
Other gauges on request.				

**ACCESSORIES**

**Connecting rods**

8820032000 Connecting distance ~179.5"

8820032100 Connecting distance ~180"

Further lengths available on request.

8261800005 push-fit uprights for version 2, 5 and 6 without pivot plate





**For recovering and transporting rail vehicles with defective wheels or wheel sets.**

The running wheels of the rail vehicle are placed on the towing device, the vehicle is locked securely via the wheel flanges of its running wheels.

**ITS BENEFITS. YOUR BENEFITS.**

**Cost and time savings due to modular design**

- Quick assembly and recovery
- Low weight
- High carrying capacity due to sturdy diagonally interlocking frame (up to 300 kN)
- Reduces consequential costs (e.g. line closure) to a minimum

**User-friendly due to modular construction**

- Low weight of individual components

**TECHNICAL SPECIFICATIONS**

**ROTOW**

Gauge	~56.5"
Rail vehicles to be towed with running wheel	diameter ~25" – 49"
Pivoting range of rerailing bridge (centre pivot plate)	+/- 5°
Axle base	~51"
Running wheel (measuring circle)	dia. ~12"
Tyre width	~5"
Wheel flange height	~1"
Towing speed	~25 mph
Height of running wheel above top of rail (rail vehicle)	approx. ~1" – 3.5"
Carrying capacity	300 kN (30 t)
Total weight	~1398 lbs
Modular design, individual component max.	~157 lbs
Dimensions additional equipment	
Rerailing bridge (L x W x H)	approx. ~86.5" x 14" x 5.5"
Support width	~86.5"

**ACCESSORIES**

- 8720180252 Mounting jack, carrying handles with hook-in claws for carrying or placing pre-mounted longitudinal beams onto wheel sets of towing device (2 off required per device)
- 8720180258 Adapter for rerailing bridge, type "DUO – LUKAS"

- 8720180286 Transverse rerailing device
- 8720180384 Slip-on cuff for fixing roller
- 8720180220 Adapter for rerailing bridge LUKAS
- 8720180222 Adapter for rerailing bridge MFD

## ROLLY Track Trolley

52.30

**For transporting track construction equipment, tools and materials**

- Light metal construction
- Can be disassembled into 5 parts (without tools)
- Heaviest individual component ~110 lbs
- Easy to assemble and disassemble
- Ball bearing aluminium running wheels
- Insulated from rail to rail

**Optionally:** Dead man's brake on 2 wheels



### TECHNICAL SPECIFICATIONS

### ROLLY 2

Permissible load capacity max.	2 t
Gauge	~56.5"
Running wheel	diameter ~8"
Dimensions (L x W x H)	~63" x 74.5" x 35"
Weight without dead man's brake	~293 lbs
Weight with dead man's brake	~322 lbs

## ROCOUPLE Tow Bars

58.03/58.62

### ROCOUPLE 100Straight

58.03/12.01 Straight tow Bar 8820031800

- Length ~59"
- Used for Rockinger coupling/Rockinger coupling
- Max. permitted thrust-traction force = 100 kN  
 $\Delta h \pm \sim 4"$

### ROCOUPLE 100Slanted

58.03/03 Slanted 800 580 3001

- Length ~57"
- Used for Rockinger coupling/Rockinger coupling
- Max. permitted thrust-traction force = 100 kN  
 $\Delta h = \sim 18.5"$  max

### ROCOUPLE 30Slanted

58.62/11 Slanted 800 586 2001

- Length ~57"
- Used for standard draw hook/Rockinger coupling
- Max. permitted thrust-traction force = 30 kN  
 $\Delta h = \sim 13"$  max

### ROCOUPLE 30Straight

58.62/12 Straight 800 586 2002

- Length ~49"
- Used for standard draw hook/Rockinger coupling
- Max. permitted thrust-traction force = 30 kN  
 $\Delta h \pm \sim 4"$



## ROMOVER Wagon Mover

59.08

**For moving wagons of up to 60 t total weight**

- To be used on flat surfaces
- For flat bottom and grooved rails as well as on slab track
- Recommended wheel diameter ~23.5" to 39.5"
- Dimensions (L x W x H) ~984" x 75" x 5.5"
- Double crooked version for short stroke, oblique application is possible
- Weight ~27 lbs



**ROSTOP**

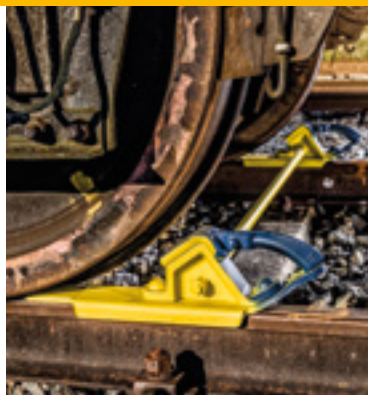
**Drag Shoe**

**59.10**

**For dragging slowly rolling vehicles**

- Standard drag shoe of DB
- Double fish-plated
- Cap and handle replaceable
- Dimensions (L x W x H) ~21.5" x 3.5" x 5.5"
- Weight ~19 lbs

Various designs upon request.



**RORERAIL**

**Rerailing Frog**

**59.12**

**For rerailing rail vehicles**

- Paired use on standard rails with heavy wagon fleet
- Stable platform with double-sided rail access
- Maximum weight of wagon: 10 t / pair
- Dimensions (L x W x H) ~31.5" x 23.5" x 10.5"
- Weight ~384 lbs / Pair



**ROTOOL Tilt**

**Rail Tilting Device**

**68.03**

**For manual tilting of all common rail types**

- For all rails of a weight up to ~470 lbs/ft
- Dimensions (L x W x H) ~51" x 5.5" x 1.5"
- Weight ~13 lbs



**ROLIFT Sleeper**

**Sleeper Lifting Device**

**69.20**

**For lifting lower lying sleepers during track assembly with hook-in part for grooved plates (K-type construction) and for sleeper screws (W-type construction)**

- Dimensions (L x W x H) ~50" x 2.5" x 7.5"
- Weight ~9 lbs





# TAMPING



**ROTAMP**

**Vertical Tamper**



**Permanently stable track geometry.  
Tamping in less than 2 mins/sleeper.**

For the safety of railways, a stable track geometry is vital. Deviations from the nominal geometry caused by level errors jeopardise regular railway operation. They result in restricted speed sections or even line closures.

The ROBEL vertical tamping principle ensures an exact interlocking of the ballast. The high tamping performance of ROTAMP leads to more tamping operations time unit and goes easy on the operator. In addition, ROBEL developed the patented 2-level vibration decoupling, which minimizes the hand-arm vibration. The low weight and handy construction makes working comfortable.

**ITS BENEFITS. YOUR BENEFITS.**

**Track stability with ROBEL vertical tamping principle**

- Optimum compaction of ballast under the sleeper
- High bearing load of the track bed due to tightly interlocked ballast
- Continuous railway operation and better utilisation of line capacity
- Long durability of the ballast

**Great tamping performance at high ergonomics**

- Minimum hand-arm vibration thanks to patented 2-level vibration decoupling
- Relief of the operator due to low weight of the machine
- Thermal shielding cover
- Exhaust gas routing away from the operator
- Option: Central safety shutdown

**Accurate work process cut costs**

- Ballast-friendly tamping avoids replacing sleeper and ballast
- Low wear costs due to solid design
- Replaceable tamping tool made of wear-resistant steel

## TECHNICAL SPECIFICATIONS

### ROTAMP P2

62.05 DRIVE AIR-COOLED 2 CYCLE ENGINE

Type	Kawasaki TJ45E
Output	1.42 kW at 8000 rpm
Dimensions (L x W x H)	~16.5" x 20" x 48.5"
Weight	~53.5 lbs

### ROTAMP P4 Light

62.05L DRIVE AIR-COOLED 4 CYCLE PETROL ENGINE

Type	Dolmar
Output	1.5 kW at 7500 rpm
Dimensions (L x W x H)	~16" x 20" x 47"
Weight	~44 lbs

### ROTAMP P4 Short Light

62.05L SHORT VERSION

Type	Dolmar
Output	1.5 kW at 7500 rpm
Dimensions (L x W x H)	~16" x 20" x 42.5"
Weight	~44 lbs

### ROTAMP B

62.20L MODULAR BATTERY POWERED

Power	2 kW
Dimensions (L x W x H)	~16" x 20" x 47"
Weight with battery	~54.5 lbs (~16.5 lbs)

[More information: Battery Technology](#)



## ACCESSORIES

**62.05 Safety cut-off:** On the work site the audibility of acoustic warning signals cannot be 100% guaranteed. For the vertical tamper a safety cut-off was designed that will alert to dangers when necessary. The operator can concentrate on tamping on the work site and is warned of approaching trains by the central cut-off of the vertical tamper, initiated by the lookout who can stop up to 4 tampers simultaneously. This indicates to the operators that they have to leave the danger zone immediately.

- 8809910004 Conversion kit, one each required per vertical tamper
- 9008120435 Connection cable, one each per vertical tamper
- 9008120434 Cable drum, can be used for 1 to 4 vertical tampers

### 62.05 and 62.05L

- 8808960110 Transport box
- 8868230001 Rail movement indicator, indicates the horizontal movement of the rail in relation to the ballast.
- 8809910009 Presentation stand
- 8998950200 Tamping tool puller
- 8999910002 Carrying handle
- 9899890100 Shoulder strap



Tamping tool puller



Shoulder strap

# ENERGY/ LIGHTING



**ROPOWER**

**Generator**

## ROPOWER HB Hybrid Drive Unit

70.02

### To power:

- ROGRIND HF Head Hybrid Rail Head Profile Grinding Machine 13.49

### ITS BENEFITS. YOUR BENEFITS.

- Oil level control with automatic shutdown at low oil
- Quiet and low vibration engine run



### TECHNICAL SPECIFICATIONS

Drive	Air-cooled 4 cycle petrol engine
Type	HONDA GX200
Output	4.3 kW at 3860 rpm
Total weight	~109 lbs
Use with generators – Necessary minimum output:	4 kVA at 230 V (if no other machine connected)

## ROPOWER 110/230/400 Power Supply

70.03

**For ROBEL Machinery with BLDC-motor, driven with standard 230 V or 400 V outlets.**

Version 3 for 400 V

Version 2 for 230 V



### TECHNICAL SPECIFICATIONS

	Version 2	Version 3
Input voltage	230 VAC* 50/60 Hz	400 VAC* 50/60 Hz
Input power	3200 W	11000 W
Output voltage	56 VDC*	56 VDC*
Output power	3000 W	10000 W
Weight	~25.5 lbs	~39.5 lbs
Length connection cable	16.5 ft (Safety plug)	16.5 ft (CEE-32A plug)

\*VAC = Volt alternating current

\*VDC = Volt direct current

## ROPOWER HD Hydraulic Power Unit

76.01

### To power:

- ROTRIM Hydraulic Weld Trimmer 14.10



### TECHNICAL SPECIFICATIONS

Drive	Air-cooled 4-stroke petrol engine
Type	HONDA GX200
Output	4.1 kW at 3600 U/min
Dimensions (L x W x H)	~22.5" x 22.5" x 18"
Weight (without hydraulic hoses)	~82.5 lbs
Gewicht Hydraulic hose	~8.5 lbs
Hydraulic pressure	max. 550 bar
Hydraulic oil	Renolin MR 310/~1 gallon
Engine oil	SAE 15W-40/~0.15 gallon

## ROPOWER P4 DUAL HD High Pressure Power Pack

76.02

### To power:

- ROSTRESS Hydraulic Modular Rail Stressor 24.70
- ROTRIM Hydraulic Weld Trimmer 14.10

### ITS BENEFITS. YOUR BENEFITS.

- Low space requirement for transport and storage, due to compact construction
- Protection of the components from damage



### TECHNICAL SPECIFICATIONS

Drive	Air-cooled 4-stroke petrol engine
Type	HONDA GXR 120
Output	4.1 kW at 3600 U/min
Dimensions (L x W x H)	~23.5" x 20.5" x 16.5"
Total weight	~99 lbs

**To power:**

- ROSTRESS Hydraulic Rail Stressor 24.70
- ROTRIM Hydraulic Weld Trimmer 14.10

**ITS BENEFITS. YOUR BENEFITS.**

- Low space requirement for transport and storage, due to compact construction
- Protection of the components from damage
- Clean due to emission-free working and reduced noise emissions
- Large area of application (tunnel, urban area, surface mining)
- ROBEL Batteries 71.01 useable (550 Wh, 700 Wh)

**TECHNICAL SPECIFICATIONS**

Drive	Battery
Battery output	700 Wh
Dimensions (L x B x H)	~23.5" x 20.5" x 16.5"
Weight	~99 lbs (incl. battery)
Weight battery	~13.5 lbs

## ROLIGHT B LED

For basic illumination of a construction site, maintenance-free without UV / IR radiation.

### ITS BENEFITS. YOUR BENEFITS.

- Flexible use
- Wireless light for every work area
- Extendable from ~39" to 138"
- Foldable to ~39" x 7.5" x 7.5"
- Wider temperature application range from -40 F to 131 F

### TECHNICAL SPECIFICATIONS ROLIGHT B LED

Lighting duration	10 h at 100% luminosity 20 h at reduced luminosity
Charging time	6 h/100% charged
LED output	30 W
Charging voltage	230 VAC
Battery LI-ION	10 Ah 36 VDC
Luminous flux	100 lm/W
Cover	~0.2" safety glass
Protection type/class of lamp and battery	IP65/III
Protection type/class of charger	IP44/I
Weight including flight case	~48.5 lbs
Dimensions of flight case (L x W x H)	49" x 17" x 8.5"

## ROLIGHT KLL

Equipped with special compact fluorescent lamps with very high output at low current consumption. 4 of the 8 lamps can be turned off, providing glare-free light in one direction.

- Illuminated area of up to 700 m<sup>2</sup>
- Can withstand wind speeds of up to 120 km/h due to special stand
- Saves space and is ready for use in no time
- Supplied in impact-resistant flight case

### ACCESSORIES

9002100237 ROPOWER D power generator





# SECURING MEASURING



**ROCLAMP**

**Rail Clamp**

**For true-to-form and secure connection of two rail ends at insulated joints, fractured rails and determined rail defects, from prevention to repair. Various possibilities of use due to different types of rail clamps for different rail types.**

The clamp is fitted directly onto the rail joint using 2 flat fish-plates. It can also be deployed for thermite welding with the use of cropped fish-plates (supplied by customer). Even with little space between rail foot and ballast bed.

### ITS BENEFITS. YOUR BENEFITS.

#### Flexibility & cost efficiency thanks to

- Compact designs
- Minimum ballast excavation required, also suitable for the majority of slab tracks
- Long service life with reduced checking frequency and maintenance effort
- High passing speed depending on rail defect

#### Safe and user-friendly due to

- Securing fish-plate with triple safety effect
- Colour coding
- Precise adjustment to rail profile and fish-plate
- Connector and securing fish-plate are secured with the same wrench size and torque
- DB user acceptance (approval)

Please ask your ROBEL contact about your specific rail-fishplate combination (with suitable fishplate).



#### Version 4 Standard long

#### ROCLAMP Long Vers4

Dimensions (L x W x H)	~7.5 x 11 x 5.1 inches
Tightening torque	580 Nm
For rail types	Discuss your intended use directly with ROBEL North America
Weight	~47 lbs



#### Version 5 Standard short

#### ROCLAMP Short Vers5

Dimensions (L x W x H)	~4.1" x 11" x 5.1"
Tightening torque	580 Nm
For rail types	Discuss your intended use directly with ROBEL North America
Weight	~28 lbs



**Mobile fencing system for securing work sites**

Protection of workforce from dangers arising from trains passing on operating adjacent tracks. Numerous applications both for permanent use as well as for temporary daily use.

**TECHNICAL SPECIFICATIONS**

**ROFENCE**

Weight per fence post element	~15.5 lbs
-------------------------------	-----------

**ITS BENEFITS. YOUR BENEFITS.**

**User-friendly**

- Easy and quick assembly
- Low weight in spite of robust tubular structure
- Length-adjustable, galvanised and insulated fence post elements in solid or collapsible design
- Easy adjustability ~6,5 ft – 8 ft
- Insulated reception tube for aluminium safety fence  
Image caption: Length adjustment

**Improved safety**

- Real and visual barrier
- Concentration on main activity in closed-off area
- Demarcation
  - to adjacent track
  - from danger zones on track
  - for paths and roads
  - from on-track machines
  - during work at nighttime
  - from various assemblies and work sites

- Compliant with the Accident Prevention and Safety Measures in the Danger Zones of Railway Tracks (GUV 15.2)
- GS approved

**Potential savings**

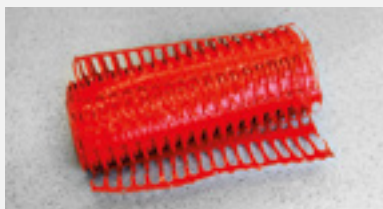
- No need for acoustic disruptive crew warning signals
- Setup lengths can be extended flexibly
- For trains passing on adjacent tracks at a maximum speed up to 99 mph
- High quality and flexibility in daily use

**Distances from centre of track**

The carrier element can be extended to the required notch and fixed.

**ACCESSORIES**

- 9800693077 Plastic grating, red, ~1.6 ft high, ~164 ft each
- 8649910001 Barrier tape holder
- 9000203470 Barrier tape
- 9800693050 Aluminium safety fence
- 9806930001 Fence post element for aluminium safety fence



# MEASURING DEVICES

We calibrate your measuring devices! Contact your ROBEL partner.

## ROMEAS Versine Versine Measuring Device

82.05

### For measuring track curves

- Not obstructionless
- Two angle supports in aluminium with level
- ~148 ft chord
- Ruler
- Complete in canvas bag
- Weight ~5.7 lbs



## ROMEAS Versine Versine Measuring Device

82.06

### For easy checking and determination of versines in track curves

- Can be used for all common rail profiles
- Measuring chord adjustable to rail height and from side to side
- Easy attachment to rail foot
- Obstructionless
- Consisting of 2 tensions clamps with rope drum and 70 m nylon rope
- Weight ~9.5 lbs



## ROMEAS Level Sighting and Levelling Unit

82.07

### For determining the longitudinal level (with reference to the top of rail) and cross level tasks

- Scales every ~0.4", alternating in ~0.4" & 0.8" graduation
- Minus zone of level slide marked with a red bar
- Telescope magnification 24-fold
- Lens opening ~1.5"
- Portrait image
- Shortest adjusting distance ~15.8"
- Adjusting distance ~0.05 to 1.2"
- Rotation range with micro adjustment 360°
- System height above top of rail ~51.2"
- Tilting device used as sighting facility
- Tilting range  $\pm 40 \text{ ‰}$
- Levelling rod used for levelling at fixed points
- Scale graduation 0,04"
- Measuring range of basic scale  $\pm \sim 31.5 \text{ ″}$
- Measuring range of adjustable level slide  
+ ~6"  
- ~4"
- Total weight ~29 lbs



## ACCESSORIES

9800820010 Target rod lighting consisting of: 1 cold cathode neon lamp, 12 V, for side lighting of adjustable level slide, including one rechargeable battery. Battery, charger, shoulder bag

9800820001 Push-on part 0 – 150 (Standard = 0 - 50)  
9800820008 Transport and storage box of water-resistant, glued plywood with carrying handles



Collapsible design



Fixed design

**For aligning sleepers**

Double leg

- In robust aluminium design
- With inner and outer stops
- Insulated from rail to rail
- Weight ~6.6 lbs

**TECHNICAL SPECIFICATIONS ROMEAS Square**

	FIXED DESIGN	COLLAPSIBLE DESIGN
Dimensions (L x W)	~67" x 55"	~67" x 28"
Weight	~8 lbs	~7 lbs

**For measuring**

- Track gauge ~56.5 – 0.4 to 1.6"
- Check rail gauge ~54.9 – 0.4 to 0.4"

**Measuring range:**

- Back to back distance (2<sup>nd</sup> check rail gauge): ~52.5 to 54"
- Flange groove ~1.2 to 2.4"
- Measuring accuracy +/- 0.2 mm
- Weight ~5.5 lbs



**ACCESSORIES**

- 9891080091 Conversion kit for grooved rails
- 9002200216 Bag for gauge ~56.5"
- R\_KAL\_INT Calibration



Conversion kit for grooved rails

**For measuring**

- Track gauge
- Check rail gauge
- Guard rail gauge
- Flange groove
- Superelevation
- Light-weight, handy size
- Aluminium rectangular tube
- Gold anodised, insulated
- Superelevation measuring integrated

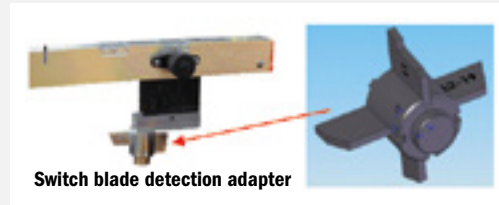
**Measuring range:**

- Track gauge ~56.5"; 55.7" to 58"
- Check rail gauge ~54.5" to 55.3"
- Back to back distance ~52.9" to 53.6"
- Flange groove ~1.2" to 3.3"
- Superelevation ~1.2" to 3.3"
- Measuring accuracy +/- ~0.02"
- Scale graduation 1 graduation mark = ~0.4"
- Weight ~5.5 lbs



**ACCESSORIES**

- 9808320003 Switch blade detection adapter, DB with check gauges L1, L2, L2-19, L2-21
- 9002200169 Switch blade detection adapter with check gauges L1, L2
- 9808307014 Transport box for gauge ~56.5"
- 9002200216 Transport bag
- R\_KAL\_INT Calibration
- 9808307013 Measuring bolt set for grooved rails



**Switch blade detection adapter**



**Measuring bolt set for grooved rails**



**Measuring bolt dia. 20 mm**

## ROMEAS Point Fixed Point Measuring Device

83.15

For measuring distances between fixed points and signal post, between concrete walls etc. and the track and for checking individual level values using an appropriate measuring gauge

- Attached to the rail by magnets
- Exact position adjustable via a level
- Weight ~2.5 lbs



## ROMEAS Gap Joint Gap Measuring Device

83.18

For measuring the distance between two adjoining rails

- Aluminium
- With measuring scale
- Measuring range ~0.04" to 0.6"
- Weight ~0.2 lbs



## ROMEAS Wear Stock Rail and Switch Blade Gauge

83.20

For easy checking of wear spots in the switch blade area as per DB regulation

- Insulated from rail to rail
- With test gauge dia. ~0.16"
- Weight ~3 lbs



## ROMEAS TGauge + Track Gauge and Superelevation Measuring Device

83.37

For measuring: • Track gauge  
• Superelevation

- Light-weight, handy measuring device
  - Track gauge ~0.4" to +1.6"
  - Superelevation ~1.2" to +7.9"
  - Reading accuracy 1 graduation mark = ~0.04"
- Other gauges available upon request.

### Measuring range:

- Track gauge ~56.5" – 0.4" to 1.6"
- Superelevation ~1.4" to 7.7"
- Equipped with measuring bolt for flat bottom rails (~0.55")
- Weight ~6 lbs



## ACCESSORIES

- 9891832120 Stop bolt for 9 mm grooved rails, 3 nos. are required
- 9808307014 Transport box for gauge ~56.5"
- R\_KAL\_INT Calibration
- 9002200216 Transport bag



Stop bolt for grooved rails

**For measuring**

- **Track gauge**
  - **Superelevation**
  - Light-weight, handy size
  - Aluminium rectangular tube
  - Gold anodised, insulated
  - Superelevation measuring integrated
  - Weight ~5.5 lbs
- Other gauges available upon request.

**Measuring range:**

- Track gauge ~55.7" to 59"
- Superelevation ~1.2" to 7.9"
- Measuring accuracy +/- ~0.02"
- Scale graduation 1 graduation mark = ~0.04"



**ACCESSORIES**

- 9808337007 Measuring bolt set for grooved rails
- 9808307014 Transport box for gauge ~56.5"
- 9002200216 Transport bag
- R\_KAL\_INT Calibration

**For measuring**

- **Track gauge**
  - **Check rail gauge**
  - **Flange groove**
  - **Back to back distance**
  - **Cross level on flat bottom and grooved rails**
  - Combined track construction measuring device for new track and maintenance
  - All values are clearly shown on a display and therefore can be viewed easily at one glance
  - Made of gold anodised sturdy aluminium tube, with integrated electronics and measuring mechanics
  - With turning knob for gauge adjustment
  - Weight ~5.5 lbs
- Other gauges available upon request.

**Measuring range:**

- Track Gauge - 0.8" / + 1.6"
- Superelevation +/- 7.9"
- Flange Groove 0.8" - 5"
- Check Rail Gauge 53" - 57"
- Back to back distance 52" - 56.5"



**Option: Version with Bluetooth function and related data readout software**

**ACCESSORIES**

- 9808350008 Transport case
- R\_KAL\_INT Calibration
- 9002200216 Transport bag





**For measuring the distance between centre of track and platform (ramp) and for measuring the height from top of rail to platform edge**

- Gauge 56-1/2"
- Made of rectangular aluminium tube, insulated
- With superelevation and track gauge measuring device
- Weight ~12 lbs

**Measuring range:**

- Horizontally from centre of the track 0" to 80.7"
- Vertically from top of rail 0 mm to 1200 mm
- Track gauge - 0.4" to + 1.6", 56-1/2"
- Other gauges available upon request.
- Superelevation - 1.18" to + 7.9"



**ACCESSORIES**

- 9808387007 Transport box for device with superelevation
- 9808387004 Transport box for device without superelevation
- 9002200216 Transport bag

**For measuring vertical and lateral rail wear (at 22.5, 45 and 67.5 degrees to the rail centre line).**

- For rail types S41, S49, S54 and UIC60
- Version depending on rail type
- With handy plastic case

<b>TECHN. SPEC.</b>	<b>Head 1 (SKM1)</b>	<b>Head 2 (SKM2)</b>
Measuring range	0°, 45°	0°, 22,5°, 45°, 67,5°
Weight	~3 lbs	~3.3 lbs



**For checking measurements L + L1 during build-up welding work in switches and crossings**

- Galvanised surface
- For rails S 49/54 UIC 60
- Special equipment: Other rail profiles
- Weight ~1.3 lbs



## ROMEAS Wheel Rail Measuring Roller

85.05

### For measuring the length of rail sections

- Version for S49, S54, UIC 60
- Measuring range up to 32,808 ft, measuring tolerance 0.02%
- Special equipment carrying case
- Weight ~12 lbs

### ACCESSORIES

- 9891850005 Carrying case  
Robust design with carrying handle  
Of rugged, water-proof material



## ROMEAS Structure Track Spacing Instrument

85.07

### For checking the track geometry with reference to a fixed point at the catenary support or adjacent track.

Distance and level measurements to the fixed point can be established accurately in a single operation.

- Model includes transport case
- Measuring range Measurable distance up to 167.8"
- Measurable height up to 27.5"
- Weight ~14 lbs



## ROMEAS Temp Rail Thermometer

85.20

### For measuring the rail temperature

- Round model with magnet
- Nominal Size ~1.6"
- Outer diameter approx. ~2.5"
- White dial plate with easy-to-read scale
- Measuring range 28 – 180° F
- Weight ~0.15 lbs

### ACCESSORIES

- 9000400322 Screw cap box (~2" x ~1")



# EQUIPMENT TOOLS



**ROTOOL Eject**

**Clip Bolt Ejecting Device**

**ROTOOL Punch****Drift Punch****69.01**

Versions:

- Long version ~11.5"
- Short version ~8"
- 0.6"
- 0.63"

Hickory handle:

- Long version ~4 lbs
- Short version ~3 lbs

**ROTOOL Crow****Crow Bar****69.02**

- 125 mm with spike pulling notch and point, ~14 lbs
- 150 mm with cutting edge and point, ~18 lbs
- Short version ø 5"
- Long version ø 6"

**ROTOOL Hammer****Hammer****69.03**

- For positioning rails into grooved plates and for driving plastic dowels into concrete sleepers
- With wear-resistant, replaceable plastic inserts
- Hickory handle ~11.5 lbs

**ROTOOL Ram****Track Ram****69.04**

- To be used by 4 persons
- Wear-resistant, replaceable plastic inserts
- Weight ~227 lbs

**ROTOOL Pick****Tamping Pick****69.05**

- With or without handle

**ROTOOL Sleeper****Sleeper Hammer****69.06**

- Forged with oval eye
- Depending on size ~12 lbs, ~14 lbs, ~20 lbs



**ROTOOL Fork****Ballast Fork****69.07**

- 9 arms
- Weight with handle ~6 lbs, without handle ~4 lbs

**ROTOOL Lever****Points Lever****69.08**

- For installing and removing plastic clips
- Weight ~13 lbs

**ROTOOL Shovel****Shovel made of Steel Sheet****69.09**

- Available with or without handle
- Weight with handle ~4 lbs, without handle ~2.5 lbs

**ROTOOL Broom****Switch Broom****69.10**

- With or without handle
- Locking handle holder for multiple use
- Optionally with ice scraper
- Weight ~2.5 lbs

**ROTOOL Adze****Adze****69.11**

- With or without handle

**ROTOOL Chisel****Cold Chisel****69.12**

- C45 steel, tempered
- Cutting edge with grind
- ~4 lbs



## ROHORN Single Single-Tone Signal Horn

69.13

- "Blowing horn"
- 1 bell mouth



## ROSIGN SH-2 Stop Disc

69.14

- 9002002107 Stop disc for protection, ~17" x 22"
- 9002007862 Stop disc for protection, reflecting, ~17" x 22"
- 9002002293 Mount for Stop disc, is fixed on the rail
- 9000800249 Mount for Stop disc, is fixed on the rail (with option for flashing warning light)



## ROHORN Multi Multi-Tone Signal Horn

69.15

- 2-tone signal
- With 4 bell mouths
- With replaceable mouth piece
- Weight ~1.75 lbs



## ROTOOL Eject Clip Bolt Ejecting Device

69.16

- For removing rusted clip bolts from grooved base plates
- Weight ~9 lbs



## ROTOOL Extract Extraction Socket

69.18

**For restructuring demolished sleeper screws.**

Easy to turn off with T-key, Impact wrench or wrenching machine.

- SW 39
- Profile inside diameter 7/10"



## Torque Wrench

- 9002501218 Suitability 50 – 320 Nm
- 9002501790 Suitability 130 – 650 Nm
- 9002501248 Suitability 400 – 1000 Nm

# SERVICE



# What does good Service stand for?

Reliable stand-by duty of rail construction machines is a vital part of economic operation. Failure free performance and longtime availability reduce dwell time and cost. Preventative maintenance secures high functionality and minimizes subsequent damage.

Good service guarantees both a long life span and value preservation and is therefore the base for effective use of hand guided machines and equipment.

By buying a ROBEL product, you do not only get a high quality machine, but also a reliable service partner.

**ROBEL offers expert advise and a wide variety of service activities, helping you to successfully do your job:**

- **Maintenance and repair using certificated original parts**
- **Modification and adjustment**
- **Damage assessment**
- **Calibration of measuring tools**
- **Original spare and wearing parts**
- **Machine demonstrations**
- **Phone consulting service**
- **Training of operators and workshop personnel**


ROBEL Service stands for schedule adherence, for a good price performance ratio and for flexible, non-bureaucratic support during the whole life-span of a product.

Take advantage of our service portfolio and use the full potential of your machine!





# ROBEL NETWORK WORLDWIDE



## AMERICA

### Argentina

Mapeko Representaciones S.R.L.  
Cerrito 1266 2° Piso Of. 9,  
C1010AAZ Buenos Aires  
Tel. +54 11 48160205 / +54 11 48164824  
E-Mail. mapekosrl@gmail.com

### Brazil

Plasser do Brasil Comercio Industria e Representacoes Ltd.  
Rua Campo Grande 3050  
23070-000 Rio de Janeiro  
Göran Sjöström  
Tel. +55 21 34707800  
E-Mail. diretorio@plasser.com.br

### Chile

IBD Asesorias y Desarrollo de Negocios Internacionales LTDA  
Seminario 138 Providencia  
7500000 Santiago de Chile  
Rodolfo Goyeneche  
Tel. +56 2 2222 96 33  
E-Mail. guido.goyeneche@mercanta.cl

### Colombia

Pinz & Prieto Representaciones Ltda.  
Carrera 7 # 74B-56 oficina 409  
110221 Santafe de Bogota  
Harry Pinz  
E-Mail. hjpinz@pinzprieto.com

### Cuba

ACHSE Lateinamerika GmbH  
Sucursal La Habana,  
Marina Hemingway, Casa 4014  
5ta Avenida y 248, Playa  
La Habana 22, C.P. 12200  
Juan Carlos Alzuro López  
Tel. +537 2 04 93 70  
E-Mail. achse@enet.cu

### Mexico

AC DIESEL y Asoci  
Periferico Oriente # 75  
Col. Constitucion De 1917  
09260 Ciudad de Mexiko  
Ruben Alejandro Chavez Diaz  
Tel. +52 555 6905 045  
E-Mail. acdiesel1@prodigy.net.mx

### Peru

Global Support Systems SA  
Urb. Huertos de Villena, Pachacamac  
Calle Los Laureles #342,  
San Borja Lima 19  
Sr. Gonzalo Arrieta  
Tel. +51 13673550  
E-Mail. ventas@gss-peru.com

### Uruguay

Potencia S.R.L.  
Ambrosio Velazco 1589  
11400 Montevideo  
Sr. Rafael Crespo Martí  
Tel. +598 2 614 24 07  
E-Mail. potencia@me.com

### USA

ROBEL North America Corporation  
254 Fernwood Ave  
Edison, NJ  
08837 USA  
Tel. +1 (732)-662-5671  
E-Mail. sales@robel.us  
www.robel.us

### Venezuela

LACO Representaciones  
Avenida Principal Lomas de Chuao  
Quinta Laco, Urb. Chuao  
1061 Caracas  
Micaela von Vultejus  
Tel. +58 212 9924489  
E-Mail. lacorep2@gmail.com

## EUROPE

### Belgium

Rail & Road Service SPRL  
Avenue des Cottages 19  
4900 Spa  
Olivier Saucez  
Tel. +32 474 770 527  
E-Mail. saucez@rail-road-service.com

### Bulgaria

M T V – Mihail Ilev  
Opaltschenska Str. 92, Bl.44, G.Ap. 40  
BG-1233 Sofia  
Mihail Ilev  
Tel. +35 929 311 153  
E-Mail. mihail.ilev@gmx.net

### Denmark

Dantor  
Københavnsvej 81,  
4000 Roskilde  
Torben Holst  
Tel. +45 40 26 65 32  
E-Mail. th@dantor.dk



## Germany

### Germany North

ROBEL Area Representative North /  
Sales Manager  
Industriestraße 31  
83395 Freilassing  
Ulf Konecny  
Tel. +49 151 18862823  
E-Mail. ulf.konecny@robел.com

### Germany East

ROBEL Area Representative East /  
Technical Sales Manager  
Industriestraße 31  
83395 Freilassing  
Gerd Vogt  
Tel. +49 151 18856189  
E-Mail. gerd.vogt@robел.com

### Germany South

ROBEL Area Representative South /  
Technical Sales Manager  
Industriestraße 31  
83395 Freilassing  
Josef Rogl  
Tel. +49 151 18862828  
E-Mail. josef.rogl@robел.com

### Germany West

ROBEL Area Representative West/  
Technical Sales Manager  
Industriestraße 31  
83395 Freilassing  
Phillip Kannewurf  
Tel. +49 151 17112254  
E-Mail. phillip.kannewurf@robел.com

## Estonia

ASI Ivent OÜ  
Lahe 6-12,  
90503 Haapsalu  
Kristjan Kaunissaare  
Tel. +372 52 388 66  
E-Mail. info@asi-invent.ee

## Finland

Ratanaula Oy  
Lehmustie 3 B 8  
11910 RIIHIMÄKI  
Mika Mankinen  
Tel. +358 40 566 2630  
E-Mail. mika@ratanaula.fi

## France

ROBEL France SAS  
52, rue de la Gare,  
68520 Burnhaupt le Haut  
Cathy Bischoff  
Tel. +33 3 89 82 59 92  
E-Mail. contact@robел.fr

## Greece

DATARAIL N. Steinhauer & Co.  
Akarnanias Str. 10  
115 26 Athen  
Nikolaus Steinhauer  
Tel. +30 210 7290708  
E-Mail. info@datarail.gr

## Great Britain

Plasser UK Ltd.  
Manor Road, West Ealing  
W13 OPP London  
Customer Support  
Tel. +44 208 991 3085  
E-Mail. customer.support@plasser.co.uk

## Italy

Plasser Italiana S.R.L.  
Via del Fontanaccio 1  
00049 Velletri (RM)  
Tel. +39 696 10111  
E-Mail. info@plasser.it

## Kosovo

N.T.Sh. AGS  
Dardania bl. 1, hy 3, nr. 5  
10000 Prishtina  
Dr. Gazmend Boshnjaku  
Tel. +381 38 223 950  
E-Mail. agskosova@gmail.com

## Croatia

ITER d.o.o.  
Kneza Ljudevita Posavskog 23  
10000 Zagreb  
Željka Lončarević  
Tel. +385 1 4646 454  
E-Mail. iter@globalnet.hr

## Latvia

Transfer-Marketinga Centrs  
Cerini, Liepu aleja, Babite  
Babite distr., 2101 Babite  
E-Mail. tmcriga@bk.ru

## Lithuania

UAB Gitana  
Bičiuliu g. 32, Bludrikų k.  
96320 Klaipėdos r.  
Žilvinas Imbrasas  
Tel. +370 687 26777  
E-Mail. zilvinas.imbrasas@gitana.lt

## Luxembourg

Rail & Road Service SPRL  
Gruus Strooss 22,  
9991 Weiswampach; Olivier Saucez  
Tel. +32 474 770 527  
E-Mail. saucez@rail-road-service.com

### **Netherlands**

Nedstrail bv  
Stationsstraat 42  
6662 BC Elst  
Hans Otterman  
Tel. +31 481 35 00 55  
E-Mail. hans@nedstrail.nl

### **Norway**

Plasser Scandinavia AS  
Kristoffer Robins vei 13  
0978 Oslo  
Tel. +47 22101550  
E-Mail. post@plasser-scandinavia.com

### **Austria**

ROBEL Verkaufstechniker  
Industriestraße 31  
83395 Freilassing  
Tel. +43 664 465 8018  
E-Mail. julia.czermak@robel.com

### **Poland**

Deutsche Plasser Bahnbaumaschinen GmbH  
ROBEL-Vertretung Polen  
ul. Grabiszyńska 251a  
53-234 Wrocław  
Jakub Dzierzanowski  
Tel. +48 667 876178  
E-Mail. dzierzanowski@plasser.pl

### **Portugal**

Kurt Hommé & Companhia Lda.  
Avenida Sacadura Cabral no 49 - R /C,  
100-273 Lisboa  
José Leite  
Tel. +351 217-977142  
E-Mail. geral@kurthomme.com

### **Rumania**

EXCO TRANSPORT SYSTEMS SRL  
Bd. Dinicu Golescu 38  
010873 Bukarest  
Liviu Bart  
Tel. +40-21-3102960  
E-Mail. excosys@excosys.ro

### **Sweden**

DAHLRAIL | Buffers Rail Industry AB  
Fabriksvägen 9  
186 32 Vallentuna  
Mikael Gustafsson  
Tel. +46 8 514 30886  
E-Mail. mikael.gustafsson@dahlrail.com

### **Switzerland**

Sersa Technik AG  
Nordstrasse 1  
5612 Villmergen  
Jürg Hürner  
Tel. +41 56 618 7200  
E-Mail. juerg.huerner@rsrg.com

### **Serbia/Bosnia Herzegowina/ Montenegro**

Lukintehnik d.o.o.  
Indire Gandi 7  
11010 Belgrade  
Vladimir Lukić  
Tel. +381 69 620 018  
E-Mail. office@ltehnik.com

### **Slovakia**

BIJOL d.o.o.  
Livarska cesta 17a  
2367 Vuzenica  
Andrej Tisnikar  
Tel. +386 2 87 90 156  
E-Mail. andrej@bijol.si

### **Spain**

Plasser & Theurer Ibérica S.A.U.  
Avenida de Las Lunas nº9  
45529 Yunclerde la sagra, Toledo  
Tel. +34 916 303 152  
E-Mail. ventas@plasser.es

### **Czech Republic/Slovakia**

VHC Trade spol.s r.o.  
Zelený pruh 99  
140 00 Praha 4  
Jan Husák  
Tel. +420 725 353 378  
E-Mail. lh@vhctrade.cz

### **Hungary**

S-HANSA Kereskedelmi és  
Szolgáltató Betéti Társaság  
Ösagárd u. 72, 1172 Budapest  
Pál Keller  
Tel. +36 30 23 11 280  
E-Mail. postmaster@shansa.axelero.net

## **AFRICA**

### **Egypt**

EL KARNAK Agency Co.  
Extension of Guesr El Suez St.  
Block No. 82, Industrial Zone  
11769 Cairo  
Sherif Azer Farag  
Tel. +202 2699 3921  
E-Mail. kaco@egts.com

### **Algeria**

Rabah DJADI  
Wilaya de Boumerdes  
Rue Bouziane Hocine  
35010 Commune de Khemis el Khechna  
Rabah Djadi  
Tel. +21 324873453  
E-Mail. djadirabah80@gmail.com



### **Mozambique**

KURT HOMMÉ CIA. LDA.  
Rua das Rosas N° 306  
Maputo  
José Leite  
Tel. +258 825597638  
E-Mail. geral@kurthomme.com

### **South Africa**

RAILWAY Infrastructure Projects (Pty) Ltd.  
No 2 Besssemer Street  
Heidelberg, Gauteng 1440  
Thabo Mdluli  
Tel. +27 11 052 2312  
E-Mail. tpm@railwayproject.co.za

## **ASIA**

### **China**

ROBEL Railway Engineering Technology (Shanghai) Co., Ltd.  
Unit 305, No. 71 West Suzhou Road  
Shanghai  
William Lin  
Tel. +86 13761116539  
E-Mail. william.lin@robelchina.com

### **Hong Kong**

Plasser Far East Ltd.  
2209, Tower One, Lippo Centre  
89 Queensway, Hong Kong  
Ching-Ling Tjoeng  
Tel. +852 2521 7391  
E-Mail. cltjoeng@plasserfareast.com.hk

### **India**

Premier India Agencies  
(Prop. Rahul Premier India  
Agencies Pvt. Ltd.)  
"Premier House", Door No. 8-1-112,  
3<sup>rd</sup> Floor

Vidyanagar, Opp. III Town Police Station  
Peda Waltair, Visakhapatnam 530 017 (A.P.)  
Sudhir Kumar Mathur  
Tel. +91 1143523195  
E-Mail. skm@premierindia.org

### **Iran**

AIRIA Co. Ltd  
Unit 201, No. 76, Vozara Bld,  
151191861 Tehran  
Ali Khalili  
Tel. +98 2188 55 45 22  
E-Mail. office@airiagroup.com

### **Israel**

Transport Technologies Partnership (Saker-Trichter) Ltd  
Ramat Yam St 93,  
Hertsliya 4685193  
Yoram Trichter  
Tel. +972 9 951 60 66  
E-Mail. yoramt@transtec.co.il

### **Japan**

Nippon Plasser K.K.  
1-33-1, Komagome, 1-chome  
Toshima-ku, Tokyo 170-0003  
Heinz Springer  
Tel. +81 3 53956280  
E-Mail. springer@nipponplasser.co.jp

### **Saudi Arabia**

Riyadh Company for Railway Supply  
Olaya P.O.Box 14089,  
Riyadh 11424  
Eng. Ragaie Sobhy  
Tel. +966 1 217 9633  
E-Mail. ragaie@riyadhestablishment.com

### **Thailand**

Number One Holding Co Ltd.  
24 Soi Sukhothai Rd.  
Suanjitladda Dusit  
Bangkok 10300  
Apinya Chatpimonkul  
Tel. +66 83 2442333  
E-Mail. apinya@numberoneholding.com

### **Turkey**

LIMPRO Dis Tic. A.S.  
Büyükdere Caddesi  
Levent Loft 201/141  
34394 Istanbul – Sisli  
Yildirim Akdere  
Tel. +90 530 970 6629  
E-Mail. yildirim@limpro.com.tr

### **United Arab Emirates**

Al Mazroui Trading & General Services INFRA  
Division  
Al Yasat Tower, 7th floor, Abu Dhabi  
Wolfgang Willig  
Tel. +971 56 397 8000  
E-Mail. ww@mazroui.ae

## **AUSTRALIA & NEW ZEALAND**

### **Australia/New Zealand**

KH1 Pty. Ltd.  
114 National Blvd, Campbellfield  
Victoria 3061  
Daniel Mociak  
Tel. +61 3 9357 5400  
E-Mail. sales@KH1.com.au

# SYSTEMS & VEHICLES.

**FAST.  
EFFICIENT.  
PROTECTED.**

ROBEL Systems & Vehicles, as well as Service & Support you can find in a separate product catalogue and as an Online-Version on [www.robel.us](http://www.robel.us).

## Systems & Vehicles at a Glance.

Whatever the challenge in track construction, ROBEL has the solution. The ROBEL catalogue for Systems & Vehicles and Service & Support catalogue provides:

- **STANDARD PRODUCTS**
- **CUSTOMER PROJECTS**
- **TAILOR-MADE SOLUTIONS**
- **COMPLETE SERVICE PORTFOLIO OF SERVICE & SUPPORT**

ROBEL is not only manufacturer, but also service partner. This makes sure that the machine works reliably and is available when needed. Downtimes costs money. It is the regular service and maintenance that prolong lifespan and keep the value. That's the prerequisite for efficient and economic rail construction. ROBEL delivers as promised and it's worth its price. So you not only get quality, but also support. Reliable and non-bureaucratic. Use the ROBEL Service offer and thereby the whole potential of your machine.



**ROBEL. MORE THAN MANUFACTURER.  
YOUR 360° SERVICE PARTNER.**



This brochure shows a cross-section of the ROBEL product range. Apart from that, ROBEL supplies a wide variety of work vehicles with trailers, special equipment and stationary machines for work on rails and sleepers.

The pictures and descriptions may relate to additional or tailor-made devices which are not standard versions. The dimensions and TECHNICAL SPECIFICATIONS as well as kind, extent and positions of components and auxiliary equipment shown in this product range are not binding.

Information regarding traveling speed is provided subject to compliance with regulations regarding use such as operation, maintenance and transport and the relevant approval regulations.

We reserve the right to make changes without prior notice. The individual agreement concluded is relevant. ROBEL Bahnbaumaschinen GmbH is an internationally registered trade mark. We reserve our copyrights.



**ROBEL North America Corporation**  
254 Fernwood Ave  
Edison, NJ 08837  
T 732-662-5671  
F 732-662-5672  
E [sales@robel.us](mailto:sales@robel.us)  
[www.robel.us](http://www.robel.us)

02.2021

