

StepnSeat (2 Step) Installation Instructions

Dear Valued Customer:

The **StepnSeat** is designed to be installed by a specialty shop or a consumer with normal hand tools and reasonable mechanical ability. Please read the following installation instructions carefully. If you are not fully comfortable with the installation process, consider having the product installed by a body or specialty shop.

PLEASE READ INSTRUCTIONS COMPLETELY BEFORE STARTING INSTALLATION

Please observe the following:

1. DO NOT exceed the 400 lb. rated capacity of **StepnSeat**.
2. DO NOT use **StepnSeat** when the vehicle is in motion.
3. BE CAREFUL in wet or muddy conditions.
4. We recommend that you DO NOT remove the handles,

their use will enhance the safety and stability of your **StepnSeat**.

Tools - You will need the following tools:

1. Electric Drill
2. 3/16" metal Drill Bit
3. 1/2" metal Drill Bit
5. 7/16" Socket with Extension and Ratchet
6. Needle Nose Vice Grips, or Needle Nose Pliers
7. Hammer
8. Center Punch

We strongly recommend that the exact tools listed above are used. Use of adjustable or inexact sized tools may prevent proper installation.

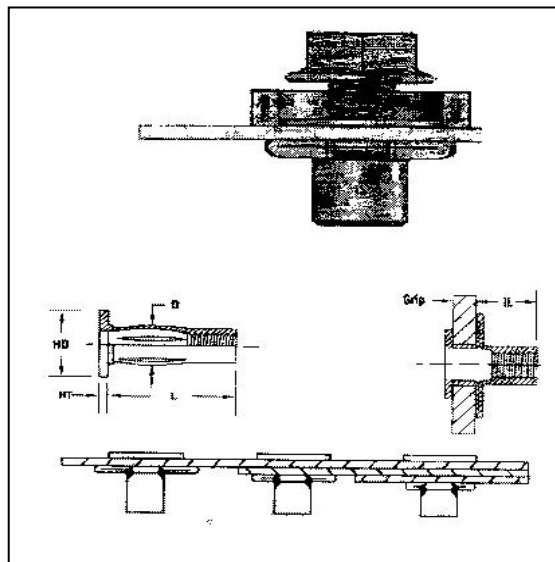
Parts List

These parts are included in the parts bag. Please check the bag and make sure that all parts are present. If any parts are missing, please call the customer service number 1-800-741-3227.

- 8 Sherex CPB Rivet Nuts
- 8 1 1/4" long 5/16-18 Hex Head Cap Screws
- 1 1 1/2" long 5/16-18 Hex Head Cap Screw
- 2 Handles

Installation

1. Position **StepnSeat** squarely on the tailgate with the registration tabs tight against the tailgate's end. Insert handles in handle cups and insert lanyard pins. Firmly hold the **StepnSeat** in place, while gently shutting the tailgate. Check to see that placement does not interfere with tailgate operation and that the handles comfortably clear the sidewall by at least 1/2". Return tailgate to open position and remove handles.
2. Check to see that the **StepnSeat** is square on the tailgate with the registration tabs tight against the end of the tailgate. Center punch the 8 holes to be drilled. Remove the unit, and drill the 8 holes using a 3/16" metal drill bit. Be careful to drill through only the first layer of metal.
3. Now drill these same holes using the 1/2" drill bit in the same spots to accept the Sherex CPB Rivet Nuts.



NOTE! Manufacturer suggests occasional lubricating with any light lubricant to the following parts: Half Clips and Hinges. This will assist in a smoother operation of your **StepnSeat**. Make sure to wipe off any excess which can cause a slippery surface. Occasionally check screws for tightness.

4. Place the Sherex CPB rivet nuts into the 1/2" predrilled holes.
5. Use the 1-1/2" long hex head screw as a tool to draw up the Sherex rivet nut. Turn screw while holding the collar of the nut with either a needle nose vice grip, or needle nose pliers.
6. Remove the 1-1/2" long hex head screw, leaving the Sherex CPB rivet nut in place.
7. Repeat steps 3 - 6 for the remaining holes using the Sherex CPB rivet nuts and the 1-1/2" long hex head screw.
8. Mount the unit over the holes.
9. Using the 8 1-1/4" Hex Head Cap Screws, bolt down the **StepnSeat**