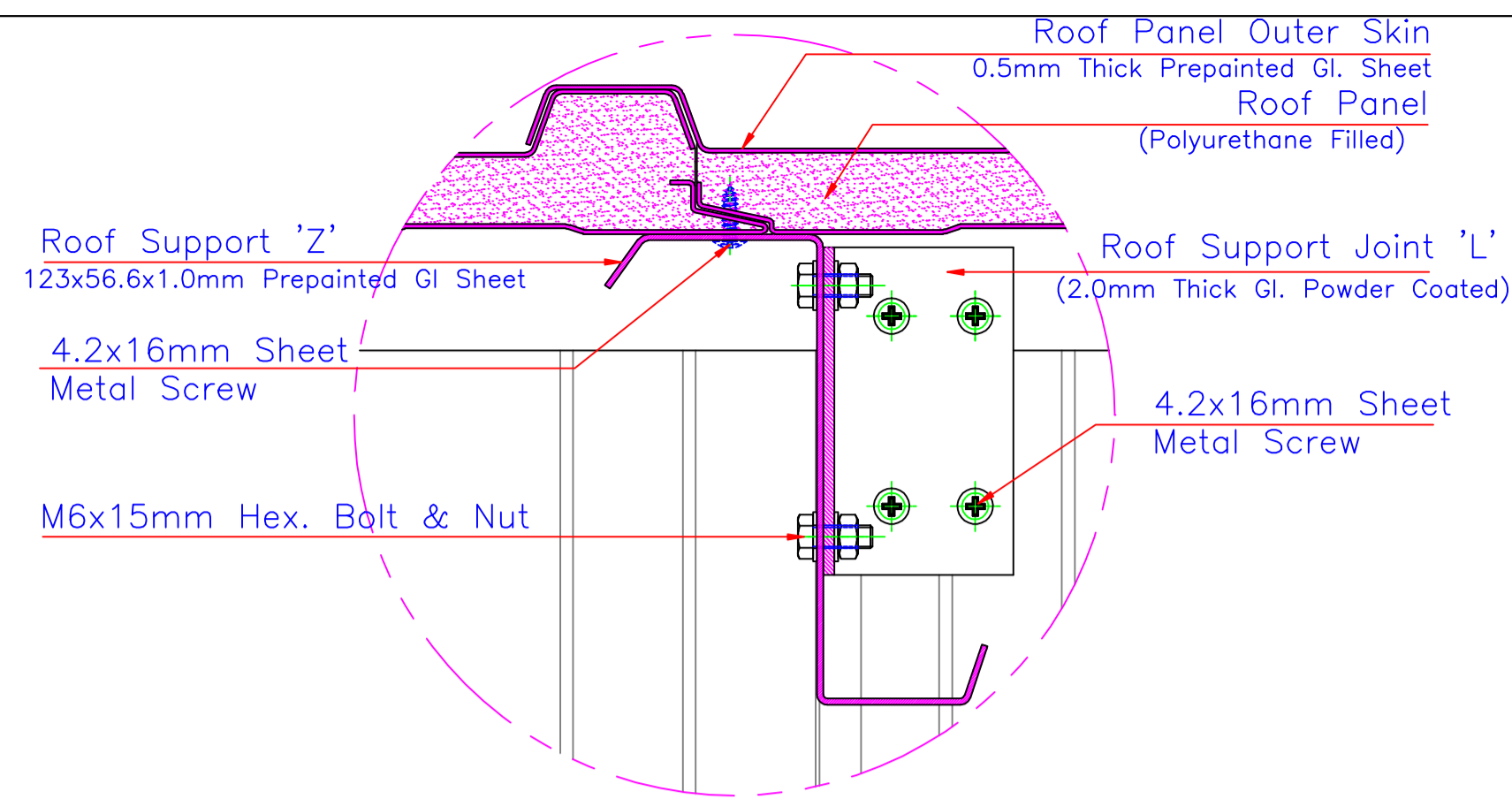
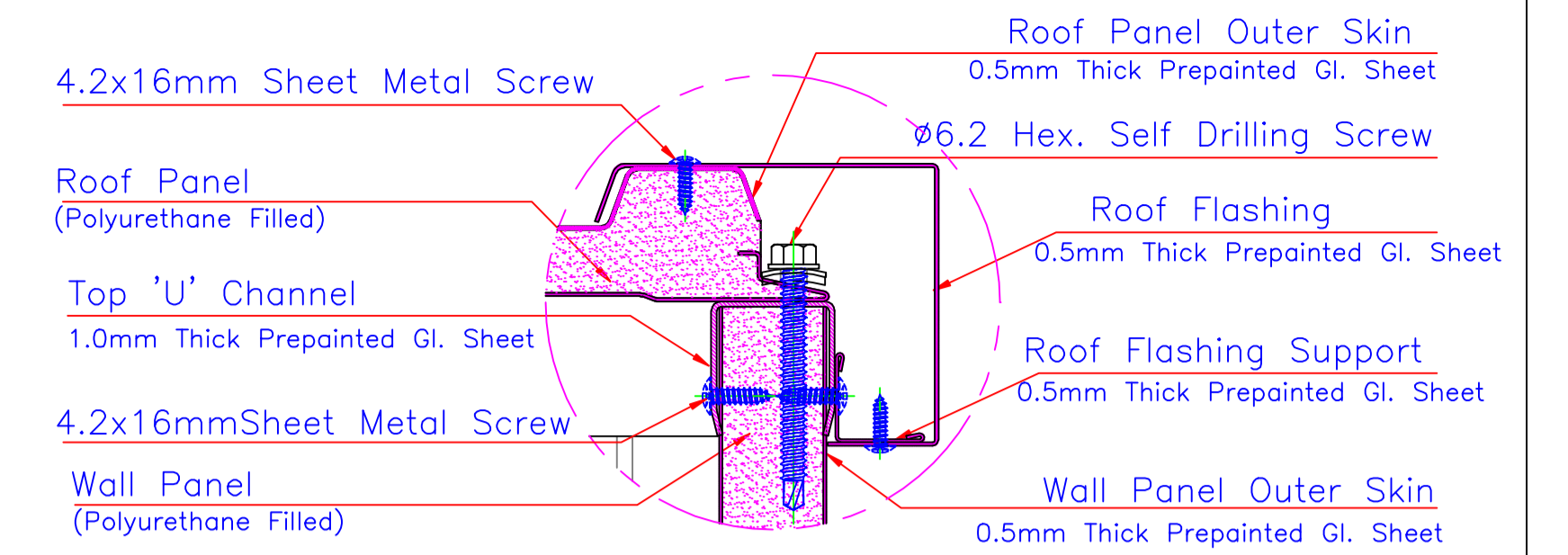


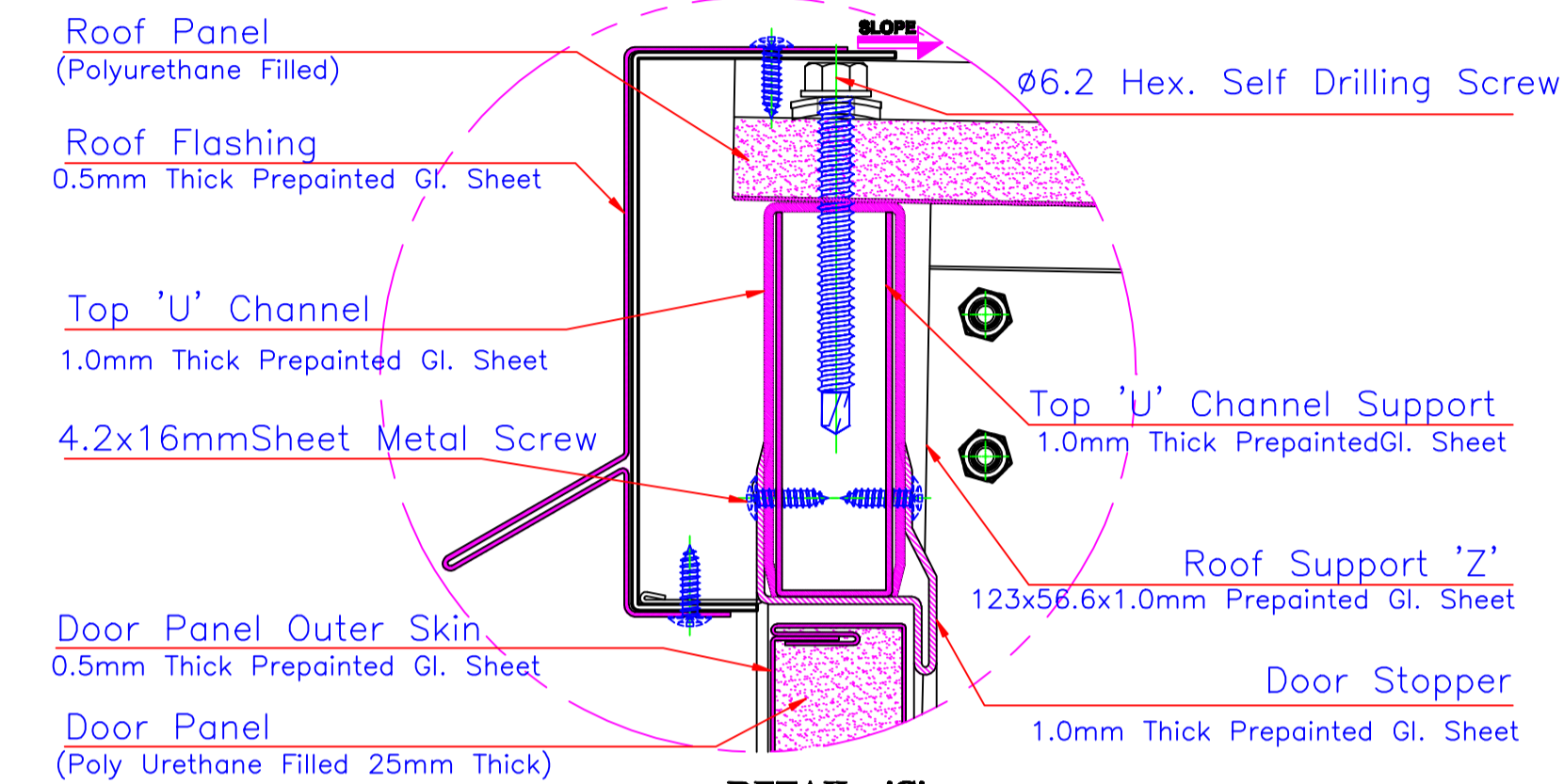
DETAIL - 'D'
WALL / ROOF / FLASHING LEFT SIDE ASSEMBLY DETAIL



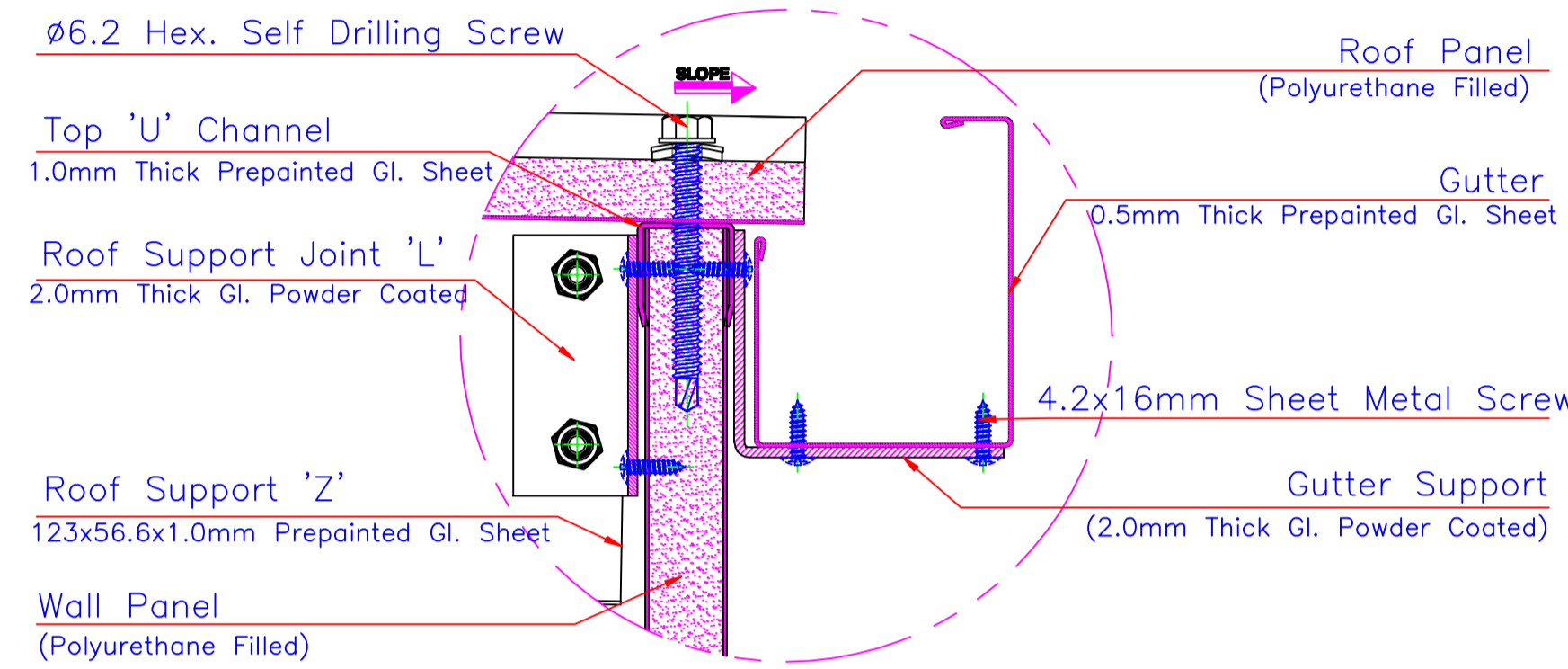
DETAIL - 'E'
ROOF / ROOF SUPPORT ASSEMBLY DETAIL



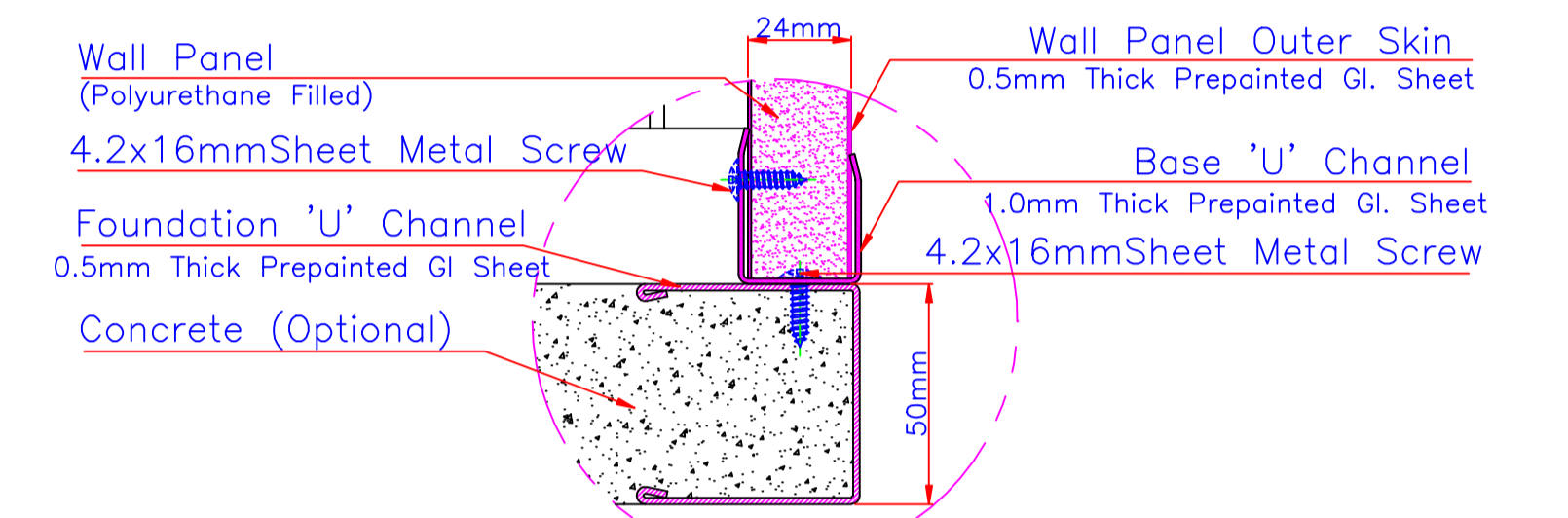
DETAIL - 'F'
WALL / ROOF / FLASHING RIGHT SIDE ASSEMBLY DETAIL



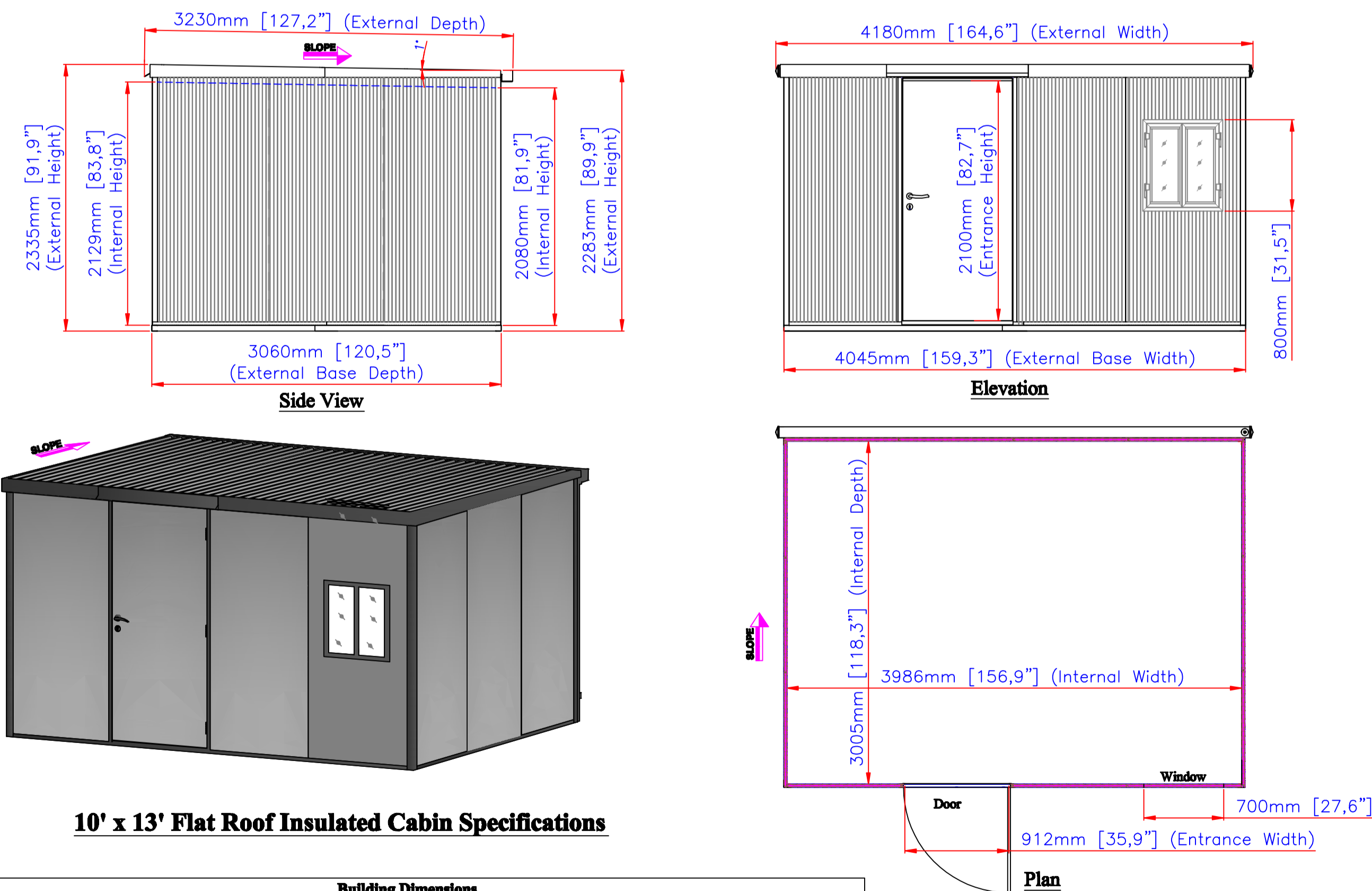
DETAIL - 'G'
WALL / ROOF / DOOR COLUMN FRONT SIDE ASSEMBLY DETAIL



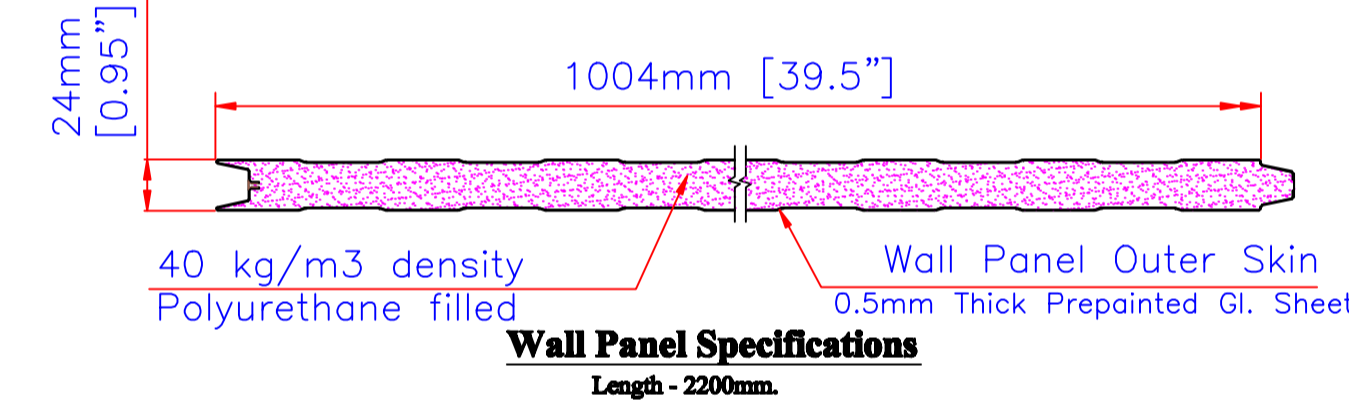
DETAIL - 'H'
WALL / ROOF / GUTTER / ASSEMBLY DETAIL



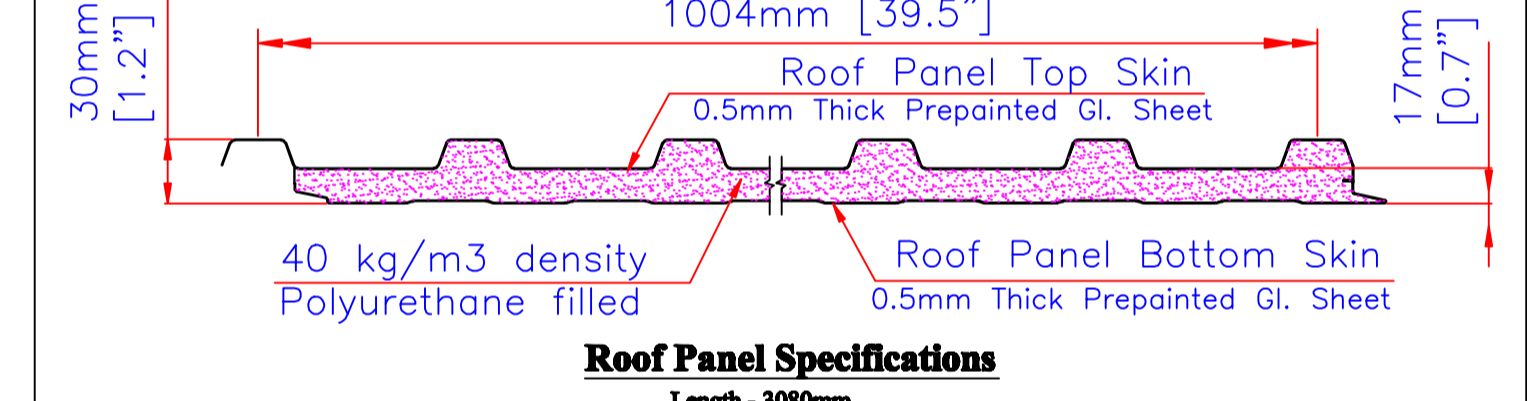
DETAIL - 'C'
WALL / BASE / FOUNDATION ASSEMBLY DETAIL



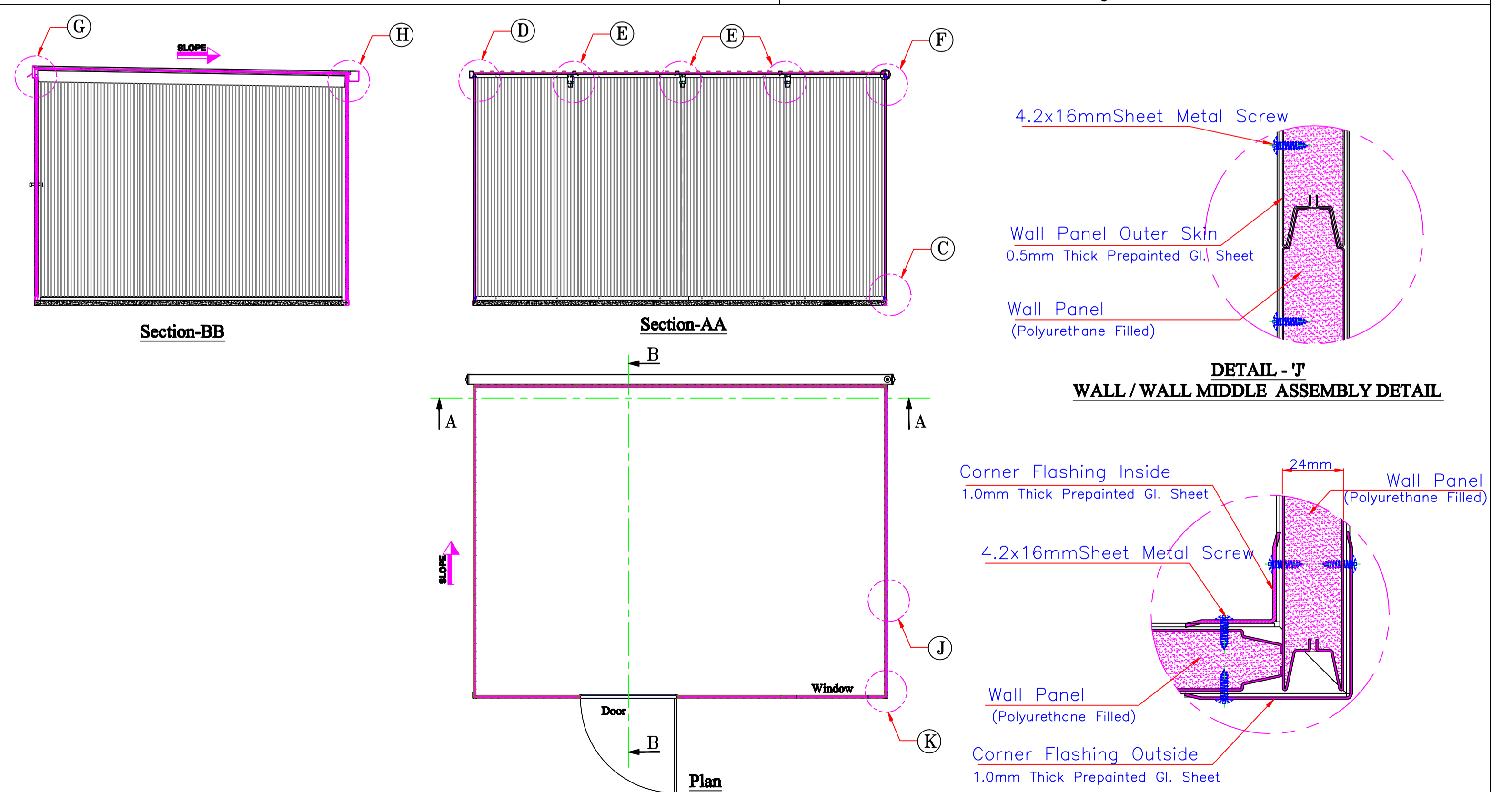
10' x 13' Flat Roof Insulated Cabin Specifications



Wall Panel Specifications
Length - 2200mm.



Roof Panel Specifications
Length - 3080mm.



10' x 13' Flat Roof Insulated Cabin Assembly Details

Approximate Size	Storage		Building Dimensions				Overall Dimensions	Door Opening	Overall Dimensions		
	Area	Volume	Exterior Dimensions		Interior Dimensions					159" W x 120" D x 92" H	
	Inch	cm	Base Dimension	Roof Edge to Edge	Wall to Wall						
10 Ft x 13 Ft	129 Sq. Ft	878 Cu. Ft	Inch	cm	Inch	cm	Inch	cm	35 7/8	91.2	
3.1m x 4.0m	12 Sq. m	25 Cu. m	Width	159 1/4	404.5	184 1/2	418	167	399	35 7/8	91.2
			Depth	120 1/2	308	127	323	118 1/4	300		
			Height	92	233.5	82	233.5	81 3/4	206	82 3/4	210
Units of R Value	m2 K/W	h ft2/BTU	Building Sample Test		Sample 1	Sample 2	Remarks		Window Dimension	27.1/2" W x 31.1/2" H	
Roof (R Value) 30mm	1.25	7.098	Thermal Conductivity C-Value	0.02397 w/mk	0.02438 w/mk	35 C Mean Temperature		Shipping Weight	1290 lbs		
Wall (R Value) 24mm	1	5.679	Compressive Strength	147.25 kpa	148.91 kpa	@10% Relative Deformation		Double Side Door Dimension	75 1/4" W x 82 3/4" H OPTIONAL		
			Density (1)	40.21 kg/m3	40.26 kg/m3	By Water Method		Snow Load Rating	30 lbs/sq. foot		
			Density (2)	38.08 kg/m3	38.91 kg/m3	By Water Method					