

# Smart Pen

## Quick Start & Service Guide



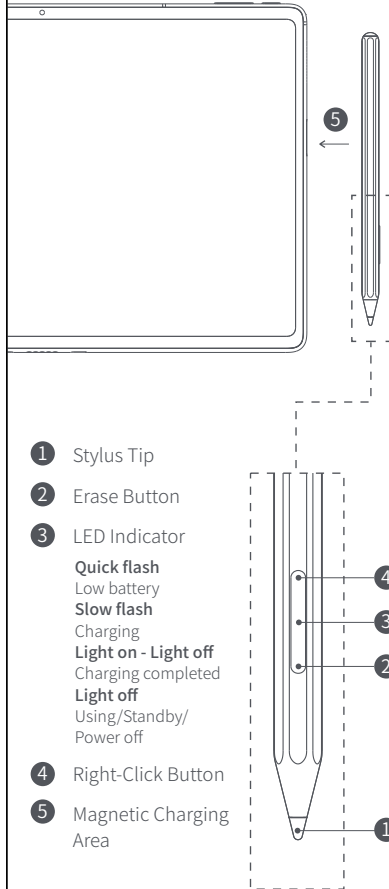
# Robo&kala

TP20



N5050011003

## Smart Pen Overview



- 1 Stylus Tip
- 2 Erase Button
- 3 LED Indicator
  - Quick flash**  
Low battery
  - Slow flash**  
Charging
  - Light on - Light off**  
Charging completed
  - Light off**  
Using/Standby/  
Power off
- 4 Right-Click Button
- 5 Magnetic Charging Area

## Smart Pen Specifications

Product Name	Smart Pen
Product Model	TP20
Dimensions	160mm x 9.2mm x 8.5mm
Pressure Sensitivity	4096
Battery	Lithium
Charging Mode	Wireless charging through magnetic connection
Work Protocol	MPP2.0
Input	5V=90mA

## Instructions

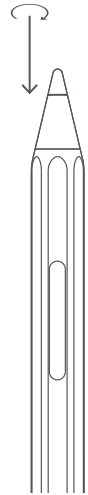
1. Be sure that the tablet is turned on before using the smart pen.
2. After the smart pen is attached to the magnetic charging area, it will be charged automatically.
3. The smart pen needs to be charged when its LED flashes quickly. After fully charged, the light will stay on.
4. The smart pen can be automatically switched into the power saving mode.
  - The smart pen will enter the power saving mode if it is left for 1 minute without use.
  - Lift the Smart Pen or press any button to leave the power saving mode, switch back to the using mode.

## Replacing the Stylus Tip

Removal




Installation



1. Rotate the stylus tip counterclockwise to remove it.
2. Rotate the new stylus tip clockwise to secure it.

⚠ Spare tip is included for free.

## Important Safety Information

 To avoid personal injury, property damage, or accidental device damage, please read all the safety information in this manual before using your device.

- Ideal operating temperatures are 0 °C to 35 °C. Ideal storage temperatures are -10 °C to +35 °C. Extreme heat or cold may damage your device.
- Using an unapproved or incompatible power adapter may void the warranty terms, violate local regulations and laws, and cause fire, explosion or other hazards.
- The device has a built-in, non-removable battery. Do not remove the battery, otherwise the device may be damaged.
- Dispose of the device, battery and other accessories in accordance with local regulations, and they should not be disposed of with household garbage.
- Keep the device and its accessories away from rain or moisture, as this may cause a fire or electric shock hazard.
- Keep the device away from excessive heat and direct sunlight. Do not place it on or in heating devices, such as microwave ovens, stoves, or radiators. Batteries may explode if overheated.
- Do not subject the device to strong impacts or vibrations to avoid device failure.
- Before cleaning and maintenance, stop all applications.
- Do not use chemical detergent, powder, or strong chemical agents. Please use a clean, soft, and dry cloth to clean the device and accessories.
- It is not recommended to conduct upgrade or replacement by yourself. Please contact the authorized service center.

## FCC Statement



This equipment generates, uses, and can radiate radio frequency energy and, if not installed and used in accordance with the manufacturer's instruction manual, may cause interference with radio and television reception. This equipment has been tested and found to comply with the limits for a

Class B digital device pursuant to Part 15 of the FCC Rules.

This device complies with part 15 of the FCC Rules. Operation is subject to the following two conditions: (1) This device may not cause harmful interference, and (2) this device must accept any interference received, including interference that may cause undesired operation.

## Trademarks Declaration

- Robo & Kala is a registered trademark of Shenzhen Ntmer Technology Co., Ltd.
- Other trademarks, product, service and company names mentioned may be the property of their respective owners. For more information, please visit [shop.robo-kala.com](http://shop.robo-kala.com)

## Copyright Notice

The contents of the manual are protected by copyright laws. Without the prior written authorization of Shenzhen Ntmer Technology Co., Ltd., nobody may copy or transcribe this manual in any way, or transmit this manual in any form in wired or wireless network.

## Contact Us


Official Customer Service: please visit [shop.robo-kala.com/pages/contact](http://shop.robo-kala.com/pages/contact).  
Service Email: [service@robo-kala.com](mailto:service@robo-kala.com)  
Manufacturer: Shenzhen Ntmer Technology Co., Ltd.

## After-sales Service Policy

Dear customer, thank you for using our products. We will provide you with excellent after-sales service as follows:  
The product may be returned if there are quality issues within 30 days of your purchase. Within 30 days of purchase, the product can be exchanged due to product quality issues. You may enjoy free warranty service during

the whole 12 months (only applicable for electronic devices) of the warranty period. To protect your legitimate rights and interests, please note the following:

1. A valid purchase certificate must be issued by the sales unit at the time of purchase.
2. The warranty card and proof of purchase should be properly kept by the user and will not be replaced if lost.
3. If the product fails due to non-human reasons, you can contact the merchant for free maintenance within the warranty period with the warranty card and purchase certificate.

 During use, one of the following conditions is not covered by the warranty:

1. Exceeded the warranty period.
2. Damage caused by product dropping or liquid ingress and other human causes.
3. Failure caused by unauthorized disassembly, modification, etc.
4. Malfunctions caused by the use environment that does not meet the product requirements.
5. Failure or damage caused by force majeure factors (such as fire, earthquake, lightning strike, etc.).
6. Damage caused by use not in accordance with the instructions or operation manual.
7. The warranty card or purchase certificate does not match the product serial number, or is altered.
8. The product SN barcode is torn off or damaged, and it is blurred and unrecognizable.