

Dual Mode Keyboard Quick Start & Service Guide-KB051

Attaching Keyboard

- 1 Open the tablet kickstand
- 2 Make the keyboard attached to the tablet, and the keyboard will power on.
(Be sure that the tablet is powered on and operates normally)



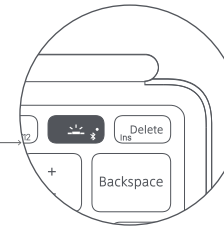
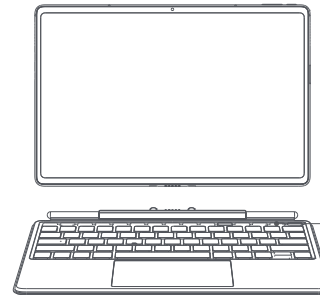
Mode Switching and Bluetooth Pairing

- 3 Bluetooth Mode
 - The tablet will automatically write pairing information to the keyboard after attachment. When switching to Bluetooth mode, the keyboard will automatically pair and connect.

- Bluetooth pairing



Press and hold the Bluetooth button for 5 seconds to enter the manual connection state.



Sleep and Charging

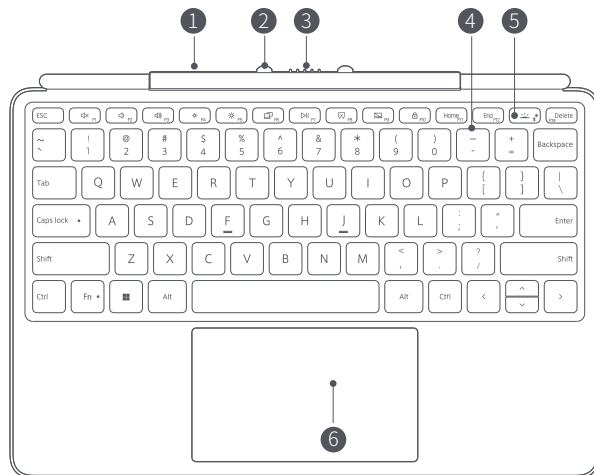
- In Bluetooth mode, without typing for 30 seconds, automatic enter sleep state.
- Attach to the tablet for automatic charging.

LED Indicator State



- Blue light flashing: Bluetooth pairing
- Red light flashing: Charging or low battery

Keyboard Overview



- 1 Hinge
- 2 Pogo-Pin Positioner
- 3 Pogo-Pin
- 4 Keypad
- 5 Bluetooth Pairing / Backlight Adjustment Key / Battery Indicator
- 6 Touchpad

⚠ If the tablet and keyboard exceed the maximum opening or closing angle, the device will automatically detach. Be aware and protect your device!


Keyboard Specifications

Product Name	Dual Mode Keyboard
Product Model	KB051
Dimensions	287.7mm x 197.0mm x 12.6mm
Operating Mode	Bluetooth / USB Pogo-Pin
Number of Keys	79
Input	5.2V=500mA



N505001005

Important Safety Information

 To avoid personal injury, property damage, or accidental device damage, please read all the safety information in this manual before using your device.

- Ideal operating temperatures are 0 °C to 35 °C. Ideal storage temperatures are -10 °C to +35 °C. Extreme heat or cold may damage your device.
- Using an unapproved or incompatible power adapter may void the warranty terms, violate local regulations and laws, and cause fire, explosion or other hazards.
- The device has a built-in, non-removable battery. Do not remove the battery, otherwise the device may be damaged.
- Dispose of the device, battery and other accessories in accordance with local regulations, and they should not be disposed of with household garbage.
- Keep the device away from excessive heat and direct sunlight. Do not place it on or in heating devices, such as microwave ovens, stoves, or radiators. Batteries may explode if overheated.
- Do not subject the device to strong impacts or vibrations to avoid device failure.
- Before cleaning and maintenance, stop all applications.
- Do not use chemical detergent, powder, or strong chemical agents. Please use a clean, soft, and dry cloth to clean the device and accessories.
- Keep the device and its accessories away from rain or moisture, as this may cause a fire or electric shock hazard.
- PU leather will be damaged by humidity, strong light, ink, alcohol and oily products, pay special attention not to touch dark and heavily dyed materials to avoid leather staining. It is normal for the color of the leather to change with time and use.
- It is not recommended to conduct upgrade or replacement by yourself. Please contact the authorized service center.

Trademarks Declaration

- Robo & Kala is a registered trademark of Shenzhen Ntmer Technology Co., Ltd.
- The **Bluetooth**® word mark and logos are registered trademarks owned by Bluetooth SIG, Inc.
- Other trademarks, product, service and company names mentioned may be the property of their respective owners. For more information, please visit shop.robo-kala.com.

Copyright Notice

The contents of the manual are protected by copyright laws. Without the prior written authorization of Shenzhen Ntmer Technology Co., Ltd., nobody may copy or transcribe this manual in any way, or transmit this manual in any form in wired or wireless network.

Contact Us

Official Customer Service: please visit shop.robo-kala.com/pages/contact.

Service Email: service@robo-kala.com

Manufacturer: Shenzhen Ntmer Technology Co., Ltd.

FCC Statement

Changes or modifications not expressly approved by the party responsible for compliance could void the user's authority to operate the equipment.

This equipment has been tested and found to comply with the limits for a Class B digital device, pursuant to Part 15 of the FCC Rules. These limits are designed to provide reasonable protection against harmful interference in a residential installation. This equipment generates uses and can radiate radio frequency energy and, if not installed and used in accordance with the instructions, may cause harmful interference to radio communications. However, there is no guarantee that interference will not occur in a particular installation. If this equipment does cause harmful interference to radio or television reception, which can be determined by turning the equipment off and on, the user is encouraged to try to correct the interference by one or more of the following measures:

- Reorient or relocate the receiving antenna.
 - Increase the separation between the equipment and receiver.
 - Connect the equipment into an outlet on a circuit different from that to which the receiver is connected.
 - Consult the dealer or an experienced radio/TV technician for help
- This device complies with part 15 of the FCC rules. Operation is subject to the following two conditions (1) this device may not cause harmful interference, and (2) this device must accept any interference received, including interference that may cause undesired operation.
- This equipment complies with FCC radiation exposure limits set forth for an uncontrolled environment.


After-sales Service Policy

Dear customer, thank you for using our products.

We will provide you with excellent after-sales service as follows: The product may be returned if there are quality issues within 30 days of your purchase. Within 30 days of purchase, the product can be exchanged due to product quality issues. You may enjoy free warranty service during the whole 12 months (only applicable for electronic devices) of the warranty period.

To protect your legitimate rights and interests, please note the following:

1. A valid purchase certificate must be issued by the sales unit at the time of purchase.
2. The warranty card and proof of purchase should be properly kept by the user and will not be replaced if lost.
3. If the product fails due to non-human reasons, you can contact the merchant for free maintenance within the warranty period with the warranty card and purchase certificate.

 During use, one of the following conditions is not covered by the warranty:

1. Exceeded the warranty period.
2. Damage caused by product dropping or liquid ingress and other human causes.
3. Failure caused by unauthorized disassembly, modification, etc.
4. Malfunctions caused by the use environment that does not meet the product requirements.
5. Failure or damage caused by force majeure factors (such as fire, earthquake, lightning strike, etc.).
6. Damage caused by use not in accordance with the instructions or operation manual.
7. The warranty card or purchase certificate does not match the product serial number, or is altered.
8. The product SN barcode is torn off or damaged, and it is blurred and unrecognizable.