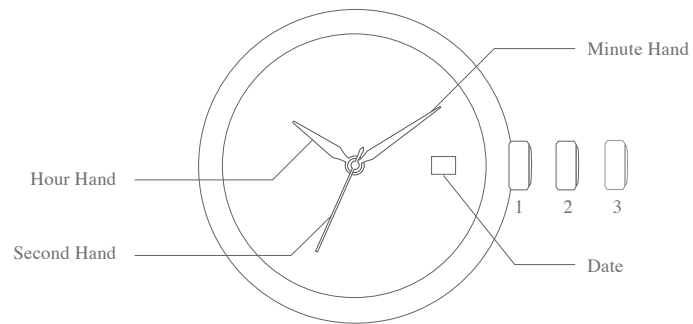


## AUTOMATIC SKELETON 3 HANDS WITH DATE

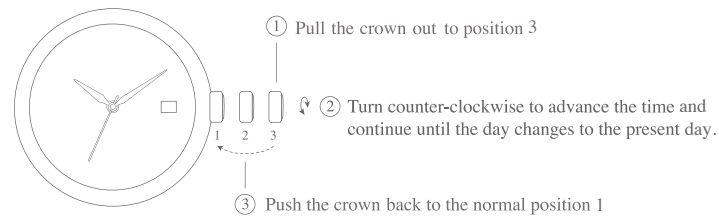
### A) DISPLAY



### B) WINDING THE MAINSPRING

Automatic winding watch can be hand wound by turning the crown in its normal crown position. Wind 15-20 times and it will start to move naturally after shaking slightly.

### C) TIME SETTING



### NOTE:

**This watch MUST be worn for at least 8 (Eight) hours each day to ensure it is fully wound.**

**An automatic watch will only wind when the watch is on your wrist and your arm moves.**

**Winding the watch by the crown will put power on the spring but not enough to allow the watch to function fully.**

**If your watch stops overnight or loses time it means it is not being fully wound.**