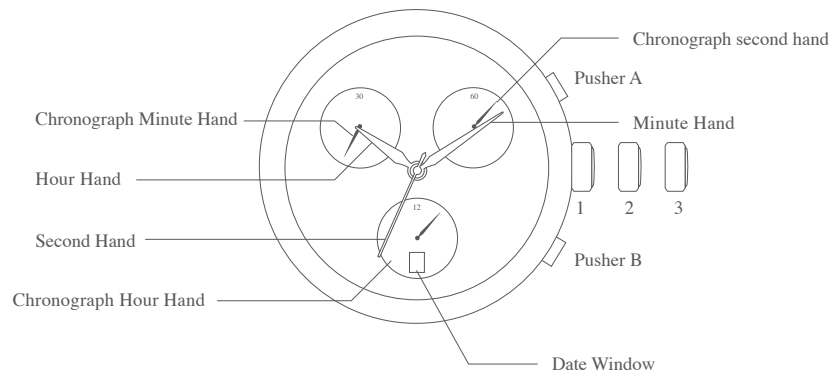
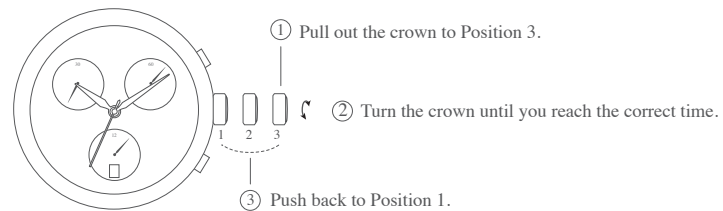


QUARTZ CHRONOGRAPH WITH DATE AT 6HR POSTION

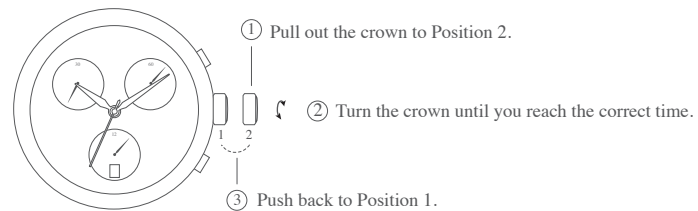
A) DISPLAY



B) TIME SETTING



C) DATE SETTING

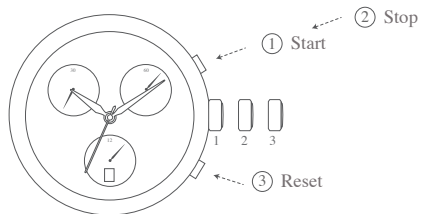


EARNSHAW

-1805-



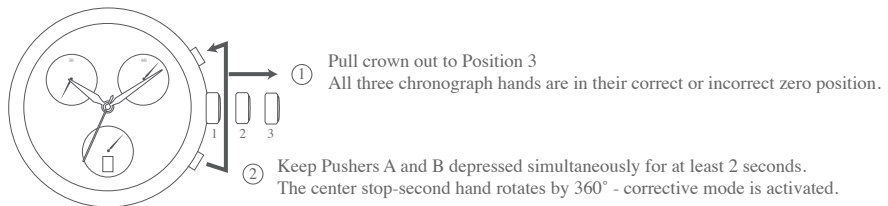
D) TIMING MODE (INTERMEDIATE OR INTERVAL TIMING)

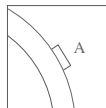


CAUTION: Never correct date between 9PM to 0.30AM.

E) TIMING MODE

a. Simple timing function





- i) Push Pusher A to adjust the centre stop second hand
- Single step by short pressing of Pusher A.
 - Continuous step by long pressing of Pusher A.



- ii) Push Pusher B to adjust the next hands (hour counter hand).



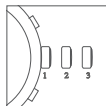
- iii) Push Pusher A to adjust the hour counter hand
- Single step by short pressing of Pusher A.
 - Continuous step by long pressing of Pusher A.



- iv) Push Pusher B to adjust the next hands (minute counter hand)



- v) Push Pusher A to adjust the hour counter hand
- Single step by short pressing of Pusher A.
 - Continuous step by long pressing of Pusher A.



- vi) Push back the crown to Position 1 to finish of the chronograph hands adjustment (can be carried out at any time).