

-1805-

EARNSHAW

*London*

INSTRUCTION  
MANUAL



Vol. I.25 EN

-1805-

EARNSHAW

*London*

**Congratulations  
on your purchase of this finely  
crafted Earnshaw Timepiece.**

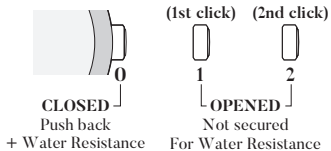
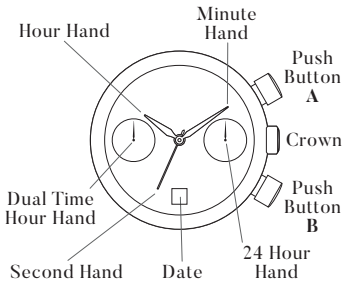
**You are now the owner of a  
timepiece that draws its roots from  
the renowned English horologist,  
clock and watch maker  
Thomas Earnshaw  
1749 - 1829**

# MULTI-FUNCTION DUAL TIME DISPLAY WATCH

For more details on operating this  
timepiece please refer to the enclosed  
booklet or visit :

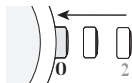
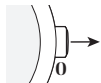
[IM.THOMAS-EARNSHAW.COM](http://IM.THOMAS-EARNSHAW.COM)

## DISPLAY



## A) TIME SETTING

1. Pull out the crown to the position [2]-(2nd click).
2. Turn the crown to set the hour and minute hands.
3. Push the crown back to position [0].



## NOTE :

- \* The 24 hour hand moves correspondingly with the hour hand.
- \* The moment of the date changes is midnight. When setting the hour hand, make sure that AM/PM is correctly set by using the 24 hour hand as an AM/PM indicator.

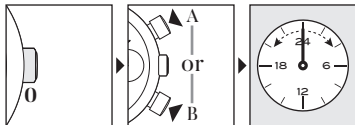
## B) DUAL TIME SETTING

While staying in a place in a different time zone from where you usually use this watch, you can set the dual time hour hand to indicate the local time of the place where you are staying.

## QUICK SETTING OF THE DUAL TIME

1. Keep the crown at position [0].
2. Press Push Button **A** or **B** to set the dual time hour hand to indicate the local time of the place where you are staying.

- Button **A** : - 1 hour / push
- Button **B** : +1 hour / push



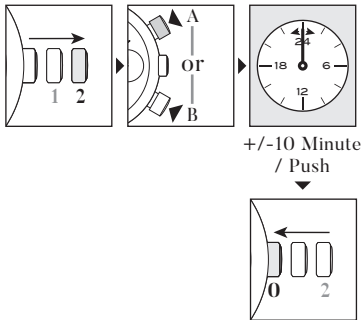
+/-1 Hour  
/ Push

## PRECISE ADJUSTMENT OF THE DUAL TIME

1. Pull the crown at position [2]-(2nd click) when the second hand is at 12 o'clock.
2. Press Push Button A or B to set the dual time hour hand to indicate the local time of the place where you are staying.

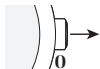
Button A : -10 minute / push  
Button B : +10 minute / push

3. Push the crown back to position [0].



## C) DATE SETTING

1. Before setting the date, be sure to set the time.
2. Pull out the crown to the position [1]-(1st click).
3. Turn the crown clockwise. The date will advance 1 day when the time reaches 00:00 midnight. Continue to turn the crown for the desire date.
4. After setting, push the crown back to position [0].



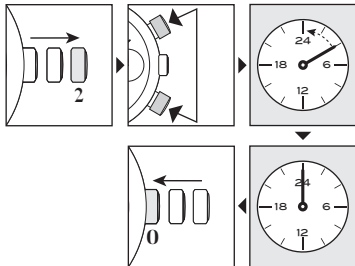
## NOTE :

- \* It is necessary to adjust the date on the first day after a 30-day month and February.
- \* Do not set the date between 9:00 P.M. and 1:00 A.M., as the date may not change properly. If it is necessary to set the date during that period of time, first change the time to any time outside of this period, set the date, and then reset to the correct time.

## D) ADJUSTING DUAL TIME HANDS POSITION

\* After setting or changing the battery, before setting the time, make sure that the dual time hour hand is at the 24 o'clock position. If it is not, please follow the procedures below.

Dual Time hour Hand  
on 24 o'clock position



1. Pull out the crown to position [2]-(2nd click).
  2. Press and hold buttons A & B simultaneously for 2 seconds or longer.
- \* Dual time hour hand moves and returns to 24 o'clock position.
3. Push the crown back to position [0]

## WATER RESISTANCE

The water resistance indicated on your timepiece serves only as a guide. Actual water resistance may vary depending on a number of important factors including temperature, water salinity, and actual use under water.

The water resistance of your timepiece may eventually be compromised over time with general wear and tear and the use of your watch under adverse conditions.

Always remember to employ the screw down crown (if available) to maintain the water resistance of your timepiece. Warranty may be voided if the screw down crown has not been properly employed.

Note that you should **NEVER** wear your watch in a jacuzzi, hot shower or steam room where steam may enter the case despite the watertight seals used to protect your watch.

The steam may cause condensation inside your watch, which may affect and damage the inner workings of your watch – which would also not be covered by the warranty.