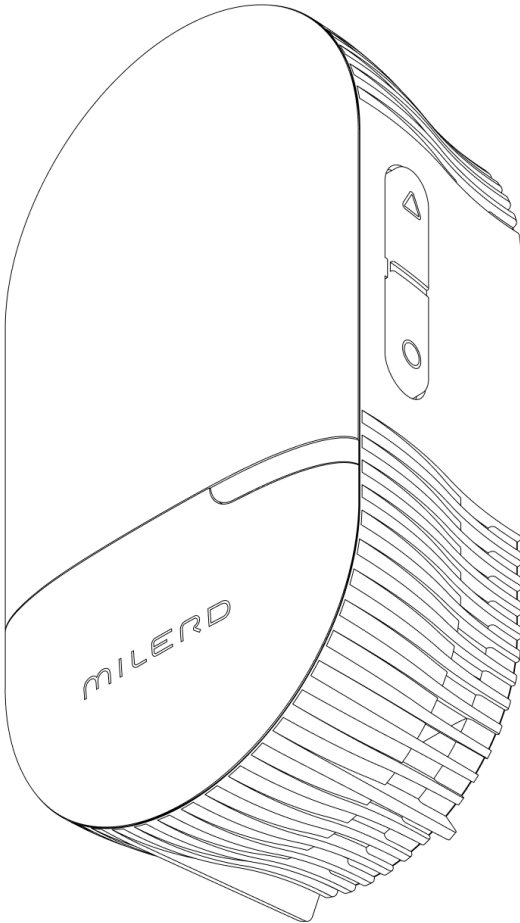


MILERD

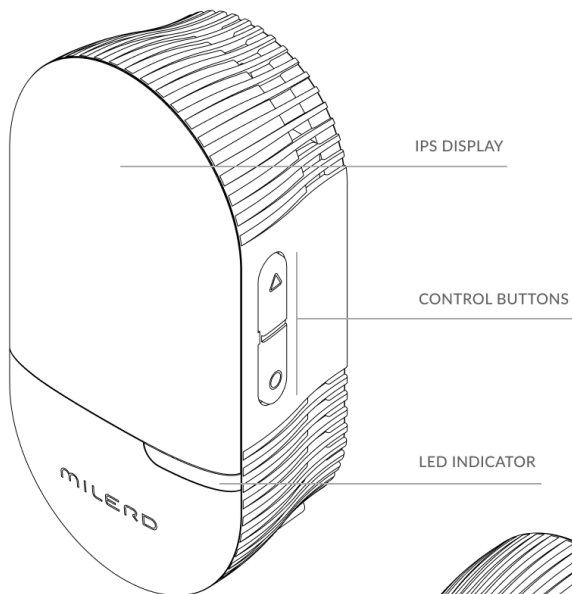
MANUAL



Aero Q4

Radon Gas Detector

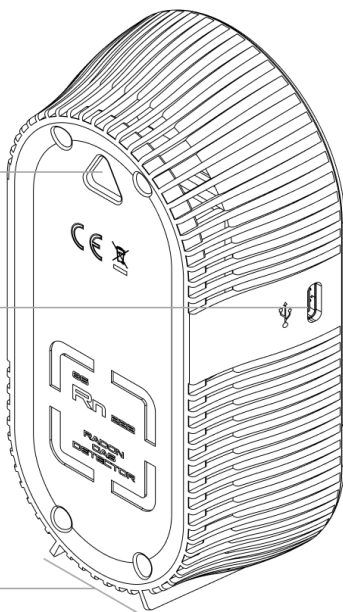
DEVICE LAYOUT



MOUNTING HOLE

USB TYPE-C CHARGING PORT

BACKING FEET



GENERAL INFORMATION

1. MILERD AERO Q4

MILERD AERO Q4 IS A PORTABLE STAND-ALONE DEVICE FOR MONITORING RADON LEVELS IN AUTOMATIC MODE. IT MEASURES **TEMPERATURE** AND **HUMIDITY**, ANALYSES **THE RISK OF MOULD FORMATION**, DETECTS THE **RADON CONCENTRATION** IN THE AIR AND INDICATES IF THE PERMISSIBLE VALUE IS EXCEEDED WITH AN AUDIBLE AND LED INDICATION. DATA IS SHOWN ON THE COLOUR IPS DISPLAY. THE DEVICE SAVES THE STATISTICS OF RADON LEVEL MEASUREMENTS WITHIN 1 YEAR.

THE RADON MEASUREMENT METHOD IS BASED ON PHOTOMETRIC MEASUREMENT WITH ELECTROSTATIC DEPOSITION OF ALPHA-PARTICLES AS A DECAY PRODUCT OF RADON-222.

2. SAFETY

1. READ THIS USER MANUAL BEFORE USING THE APPLIANCE.
2. USE THE DEVICE ONLY FOR ITS INTENDED PURPOSE, AS SPECIFIED IN THE INSTRUCTION MANUAL.
3. IT IS NECESSARY TO AVOID SHAKING IT AND DROPPING IT TO PREVENT DAMAGE TO THE WORKING PARTS.
4. DIRECT MOISTURE SHOULD BE AVOIDED ON THE POWER CONNECTORS.
5. CONNECT THE DEVICE ONLY TO A POWER SUPPLY WITH A VOLTAGE CORRESPONDING TO THAT INDICATED ON THE MARKING.
6. DO NOT SUBMERGE THE DEVICE IN WATER.

IN CASE OF NON-COMPLIANCE WITH THE RECOMMENDED OPERATING PROCEDURES, SAFETY BECOMES COMPROMISED.

3. STORAGE AND TRANSPORTATION

1. TRANSPORTATION AND STORAGE TEMPERATURES SHOULD BE FROM -60°C TO 45°C , WITH RELATIVE HUMIDITY OF UP TO 95%, AND THE PACKAGING SHOULD BE PROTECTED FROM DIRECT SUNLIGHT AND MOISTURE.
2. THE SERVICE LIFE OF THE DEVICE IS 5 YEARS AND IS SUBJECT TO OPERATING CONDITIONS.

4. DISPOSTAL

THIS SYMBOL INDICATES THAT THIS PRODUCT AND / OR BATTERY SHOULD NOT BE DISPOSED OF WITH HOUSEHOLD WASTE. DISPOSE OF THE APPLIANCE IN ACCORDANCE WITH LOCAL LAWS AND REGULATIONS.

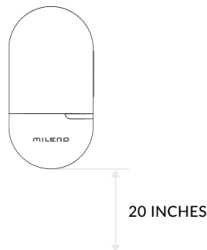


5. MOUNTING

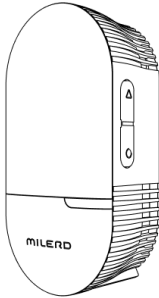
THE DEVICE CAN BE PLACED VERTICALLY OR HORIZONTALLY ON A FLAT SURFACE OR MOUNTED ON A WALL.

IT IS RECOMMENDED TO PLACE THE DEVICE AT LEAST 20 INCHES ABOVE THE FLOOR. DON'T PLACE THE DEVICE CLOSE TO OPEN WINDOWS OR VENTS.

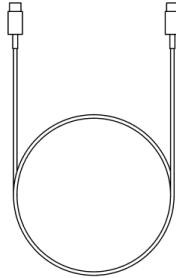
THERE IS A TRIANGULAR HOLE ON THE BACK OF THE DEVICE FOR WALL MOUNTING.



6. SUPPLY PACKAGE



MILERD AERO Q4



USB TYPE-C CHARGING CORD

7. TECHNICAL SPECIFICATIONS

SCREEN	IPS LCD 2.4 INCHES
RADON MEASUREMENT RANGE	20..9999 Bq/m ³ (0..270 pCi/L)
MEASUREMENT METHOD	Photometric measurement with electrostatic deposition of Alpha-particles
FIRST RESULT	within 12 hour
RADON MEASUREMENT ACCURACY	±12%
BATTERY	1500 mAh, 3.7 V, LiPo
CONTINUOUS OPERATING TIME	24 hours (continuously) / up to 300 hours (with inactive screen)
CHARGING TIME	3 h
POWER INTERFACE	USB TYPE-C 5V/1A
OVERALL DIMENSIONS	125 × 65 × 45 mm
WEIGHT	200 g
OPERATING TEMPERATURE	-10..40°C
PROTECTION DEGREE	IP 40

8. WARRANTIES

1. THE WARRANTY PERIOD FOR THE DEVICE IS 12 MONTHS FROM THE DATE OF SALE THROUGH A RETAIL NETWORK. IN THE ABSENCE OF A MARK FROM THE TRADING ORGANIZATION, THE WARRANTY PERIOD STARTS FROM THE DATE OF MANUFACTURE OF THE PRODUCT. THE MONTH AND YEAR OF MANUFACTURE OF THE PURIFIER CAN BE FOUND IN THE WARRANTY CERTIFICATE.
2. ALL RECHARGEABLE BATTERIES ARE CONSUMABLE ITEMS THAT DEGRADE AS THEY CHEMICALLY AGE. CONSUMABLES ARE NOT COVERED BY THE WARRANTY.
3. WARRANTY REPAIRS ARE CARRIED OUT BY THE MANUFACTURER.
4. CLAIMS FOR PRODUCTS THAT HAVE DAMAGE THAT DIFFER FROM NATURAL TRACES OF USE ARE NOT ACCEPTED.
5. FAILURE OF THE DEVICE, WHICH IS OPERATED IN VIOLATION OF SAFETY, IS NOT COVERED BY THE WARRANTY.

ABOUT PROBLEM

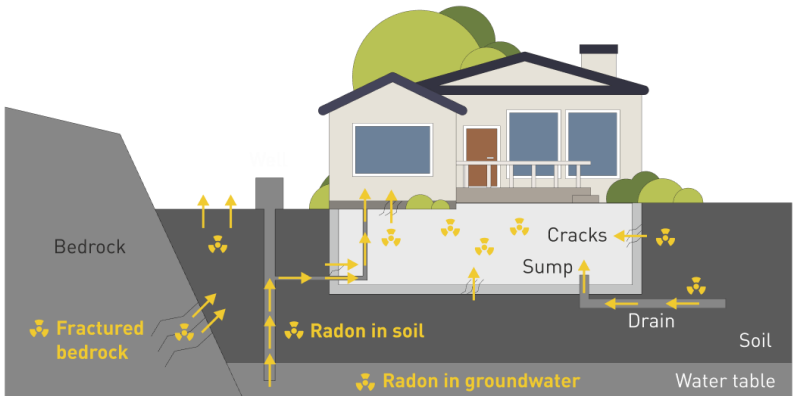
8. RADON



RADON IS AN ODOURLESS, COLOURLESS AND TASTELESS RADIOACTIVE GAS. RADON IS FORMED DURING THE NATURAL RADIOACTIVE DECAY OF URANIUM, WHICH IS PRESENT IN ALL ROCKS AND SOILS. RADON CAN ALSO BE PRESENT IN WATER.

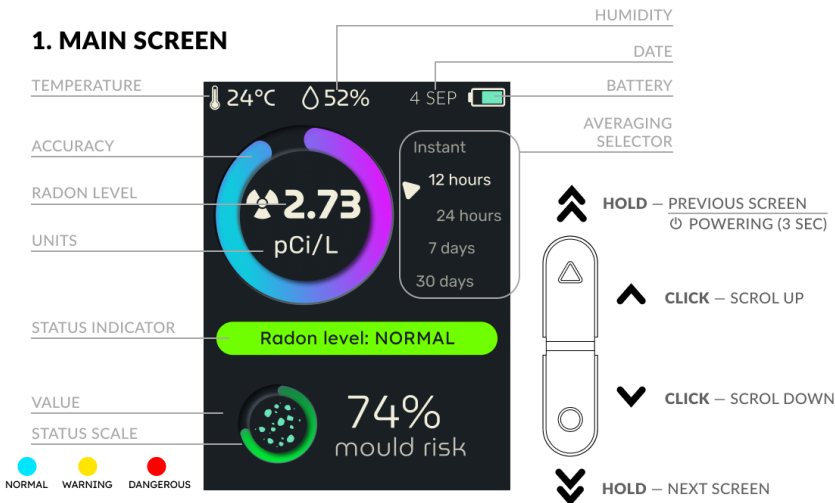
WHEN RELEASED FROM THE GROUND INTO THE AIR, RADON DECAYS TO FORM RADIOACTIVE PARTICLES. WHEN WE BREATHE, THESE PARTICLES DEPOSIT ON THE CELLS OF THE RESPIRATORY EPITHELIUM, WHICH CAN FURTHER DAMAGE CELL DNA AND LEAD TO THE DEVELOPMENT OF LUNG CANCER.

IN THE AMBIENT AIR, THE RADON CONCENTRATION FALLS QUICKLY TO VERY LOW LEVELS AND IS USUALLY NOT HAZARDOUS. HOWEVER, INDOORS AND IN POORLY VENTILATED AREAS, CONCENTRATIONS ARE HIGHER, WITH THE ELEVATED CONCENTRATIONS OBSERVED, FOR INSTANCE, IN MINES, CAVES, AND WASTEWATER TREATMENT PLANTS. IN BUILDINGS, SUCH AS HOMES, SCHOOLS, AND OFFICES, RADON CONCENTRATION LEVELS CAN VARY GREATLY, FROM 10 BQ/M³ TO MORE THAN 10,000 BQ/M³. GIVEN THE PROPERTIES OF RADON, IT CAN BE CONCLUDED THAT PEOPLE IN SUCH BUILDINGS, PERHAPS UNKNOWINGLY, LIVE OR WORK IN EXCEEDINGLY HIGH RADON CONCENTRATIONS.



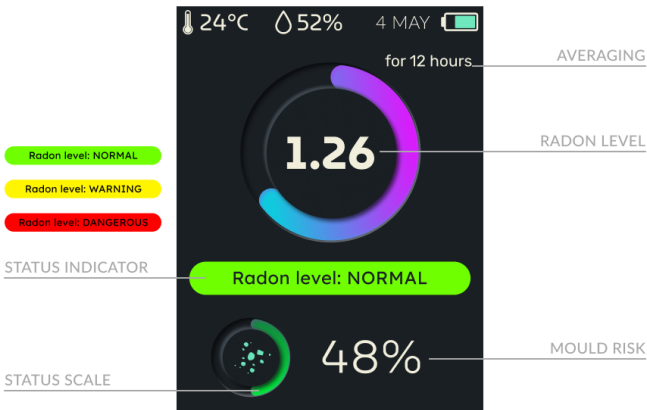
INTERFACE

1. MAIN SCREEN



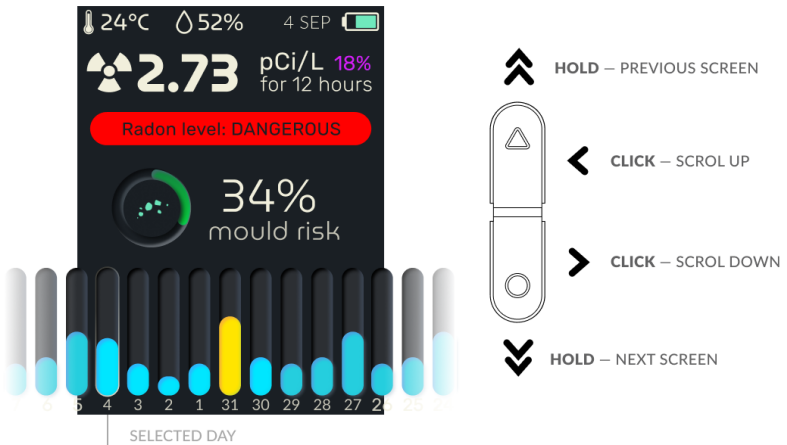
THE MAIN SCREEN SHOWS THE MAIN MEASUREMENT PARAMETERS. TO THE RIGHT OF THE RADON LEVEL INDICATOR YOU CAN SELECT THE TIME FOR AVERAGING THE MEASUREMENT RESULTS. THE RADON CIRCULAR SCALE SHOWS THE ACCURACY OF THE DISPLAYED VALUES (THE LONGER THE DEVICE MEASURES, THE HIGHER THE ACCURACY). THE CIRCULAR SCALE FOR PM AND VOC INDICATES THE LEVEL OF DANGEROUS EXPOSURE.

2. IDLE MODE



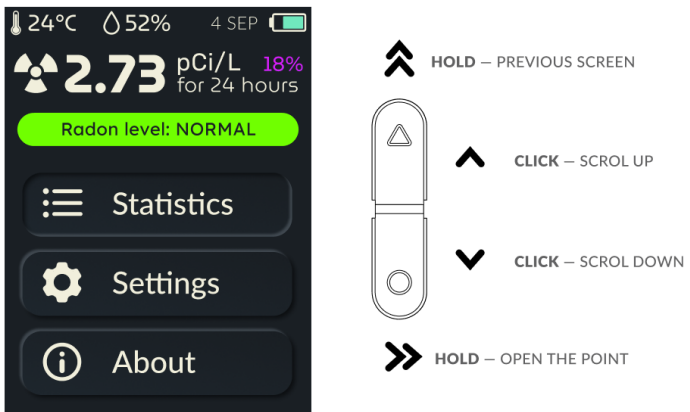
TO ENTER IDLE MODE, HOLD DOWN THE TOP BUTTON ON THE MAIN SCREEN (VALUES WILL BE DISPLAYED FOR THE SELECTED AVERAGING). TO RETURN TO THE MAIN SCREEN, PRESS ANY BUTTON.

3. STATISTICS AND MOULD RISK SCREEN



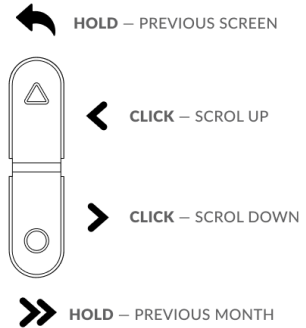
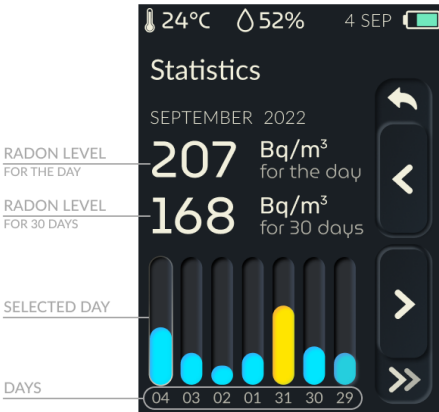
THE STATISTICS SCREEN SHOWS A GRAPH OF RADON MEASUREMENTS OVER THE LAST 9 DAYS. USE THE BUTTONS TO NAVIGATE THROUGH THE MEASUREMENT HISTORY. THE ADVANCED STATISTICS SECTION CAN BE ACCESSED BY SELECTING THE APPROPRIATE MENU ITEM ON THE NEXT SCREEN.

4. MENU



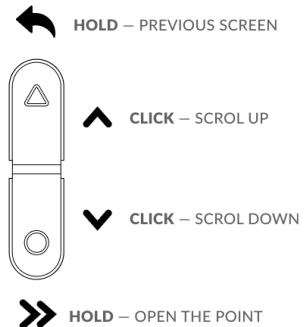
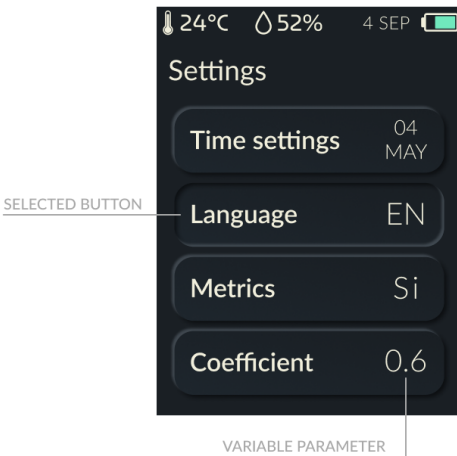
THE MENU CONTAINS: ADVANCED MEASUREMENT STATISTICS, SETTINGS AND DEVICE INFORMATION (DEMO MODE IS UNDER "ABOUT").

5. STATISTICS



THE ADVANCED STATISTICS SCREEN SHOWS A GRAPH AND NUMERICAL VALUES OF RADON MEASUREMENTS PER DAY AND OVER THE LAST 30 DAYS. USE THE BUTTONS TO NAVIGATE THROUGH THE MEASUREMENT HISTORY. THE DEVICE SAVES THE STATISTICS OF RADON LEVEL MEASUREMENTS WITHIN 1 YEAR.

4. SETTINGS



THE RIGHT-HAND BUTTONS SHOW THE CURRENT SETTINGS. TO CHANGE A PARAMETER, SELECT THE REQUIRED POINT AND HOLD DOWN THE LOWER BUTTON. THE WINDOW FOR CHANGING THE SELECTED PARAMETER WILL OPEN.

WARRANTY CERTIFICATE

MILERD AERO Q4

N^o _____

Manufacturing date _____

QC department representative _____

QC stamp

Quality claims address: Sr Tech LLC, 97500 Radomsko;
Zeromskiego 22/2; Poland, info@milerd.com milerd.com

TO BE FILLED BY RETAILER

Date of sale _____

day, month, year

Seller _____

signature

Seal

ACCEPTANCE CERTIFICATE

MILERD AERO Q4

N^o _____

Manufactured and accepted in accordance with Technical Specification
ISO 9001: 2015; ISO 14001: 2015; ISO 45001: 2018 and recognised as suitable for operation.

Head of QC department _____

signature

print full name

day, month, year

Seal

MILERD



© 2022 SR TECH LLC
ALL RIGHTS RESERVED.