

LHB Series Linear High Bay

Commercial & Industrial Buildings

OVERVIEW

Wattage (W)	100W, 150W, 200W, 300W, 400W
Lumen Package (lm)	Up to 56,000 lm
Color Temperature (CCT)	4000K, 5000K
Efficacy (lm/W)	Up to 149 lm/W



DETAILS

Illuminate your indoor sports arena, warehouse, or supermarket aisles while lowering energy consumption and lowering the risk of lighting damage by choosing our tough LED linear high bay. When switching from metal halides, you can save up to 60% in monthly energy costs while still receiving an output of up to 56,000 lumens.

KEY FEATURES

- Lumen Output Up to 56,000 lm
- Specialized asymmetrical optic 40° x 140° for aisle, workshop, and warehouse
- IP66 & IK10 double protection
- Easy plug-in motion sensor
- Low UGR

APPLICATIONS

- Warehouse
- Exhibition Centers
- Factory
- Stadiums
- Industrial Facility
- Toll Stations



100W, 150W



200W, 300W



400W

LHB Series Linear High Bay

Commercial & Industrial Buildings

SPECIFICATIONS

Wattage & Lumens	100W, 14,000 lumens 150W, 21,000 lumens 200W, 30,000 lumens 300W, 42,000 lumens 400W, 56,000 lumens
Efficacy	Up to 149 lm/W
CCT	4000K, 5000K
CRI (Ra)	80
Controls	0-10V Dimming Integral Sensor Receptacle
Input Voltage	100-277VAC / 277-480VAC, 50/60Hz
Power Supply	SOSEN
Driver Type	Constant Current (CC)
Power Factor	>0.95
LED Type	LED 3030
Average Lifetime	L90: 40,000 hours L80: 82,000 hours L70: 131,000 hours
Beam Angle	80°x100° (Standard), 60°x100° and 25°x85° for Aisle Application 60° and 90° for Open Area Applications
Mounting	Suspension Mounting Ceiling Bracket & ±60deg Rotatable Bracket Mounting
Operating Temperature	-30°C to +50°C (-22°F to +122°F)
Material	Aluminum Alloy, Polycarbonate Optical Lens
Fixture Color	Silver Gray
Finish	Powder Coating
Surge Protection	6kV line-line, 10kV line-earth
IP Rating	IP66
IK Rating	IK10
Certifications	DLC Premium, ETL
Warranty	5 Years

LHB Series Linear High Bay

Commercial & Industrial Buildings

ORDERING GUIDE

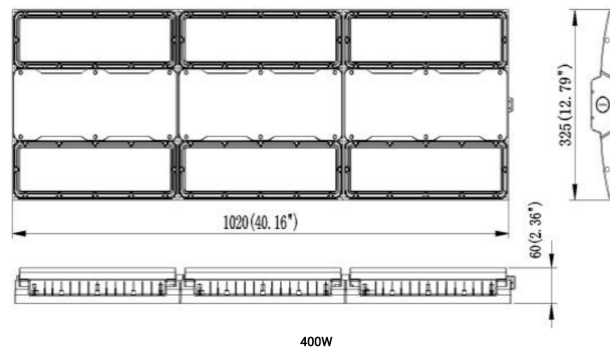
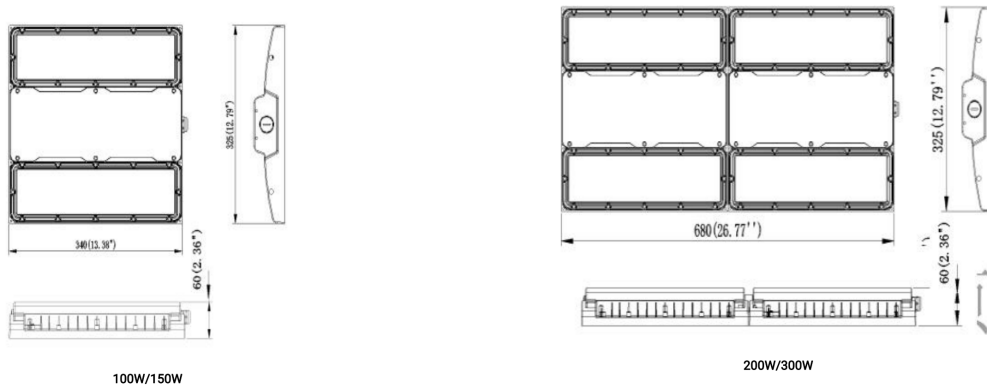
 Example: **LLTVLHB-100-40-60**

SKU Root	Wattage / Lumens	CCT	Beam Angle	Voltage
LLTVLHB	-100 - 100W, 14,000 lumens	-40 - 4000K	-LW - 80°x100° (Aisle Wide Beam)	Blank - 100-277V
	-150 - 150W, 21,000 lumens	-50 - 5000K	-LM - 60°x100° (Aisle Medium Beam)	-480 - 277-480V*
	-200 - 200W, 30,000 lumens		-LN - 25°x85° (Aisle Narrow Beam)	
	-300 - 300W, 42,000 lumens		-60 - 60°	
	-400 - 400W, 56,000 lumens		-90 - 90°	

*Not available for 400W

PRODUCT DIMENSIONS

DIMENSIONS	100W	150W	200W	300W	400W
Product Dimension	340 x 325 x 60 mm (13.38 x 12.8 x 2.36")		680 x 325 x 60 mm (26.77 x 12.8 x 2.36")		1020 x 325 x 60 mm (40.16 x 12.8 x 2.36")
Luminaire Net Weight	3.5±0.3kg (7.72±0.66lbs)	3.7±0.3kg (8.16±0.66lbs)	6.7±0.3kg (14.77±0.66lbs)	7.8±0.3kg (17.20±0.66lbs)	10.7±0.3kg (23.59±0.66lbs)
Export Carton Size	420 x 385 x 135 mm (16.54 x 15.16 x 5.31")		760 x 385 x 135 mm (29.92 x 15.16 x 5.31")		1100 x 385 x 135 mm (43.31 x 15.16 x 5.31")
Gross Weight	4.2±0.3kg (9.26±0.66lbs)	4.4±0.3kg (9.70±0.66lbs)	7.5±0.3kg (16.53±0.66lbs)	8.6±0.3kg (18.96±0.66lbs)	11.65±0.3kg (25.68±0.66lbs)



LHB Series Linear High Bay

Commercial & Industrial Buildings

PERFORMANCE

Distribution	Model	CRI	Wattage	4000K		5000K	
				Lumens	Efficacy	Lumens	Efficacy
Wide Beam (LW 80°x100°)	LLTVLHB-100-XX-LW	80	100	14,700	147	14,870	148.7
	LLTVLHB-100-XX-LW-480						
	LLTVLHB-150-XX-LW	80	150	22,050	147	22,305	148.7
	LLTVLHB-150-XX-LW-480						
	LLTVLHB-200-XX-LW	80	200	29,400	147	30,000	148.7
	LLTVLHB-200-XX-LW-480						
	LLTVLHB-300-XX-LW	80	300	44,100	147	44,610	148.7
	LLTVLHB-300-XX-LW-480						
LLTVLHB-400-XX-LW	80	400	58,800	147	59,480	148.7	
Medium Beam (LM 60°x100°)	LLTVLHB-100-XX-LM	80	100	14,620	146.2	14,790	147.9
	LLTVLHB-100-XX-LM-480						
	LLTVLHB-150-XX-LM	80	150	21,930	146.2	22,185	147.9
	LLTVLHB-150-XX-LM-480						
	LLTVLHB-200-XX-LM	80	200	29,240	146.2	29,580	147.9
	LLTVLHB-200-XX-LM-480						
	LLTVLHB-300-XX-LM	80	300	43,860	146.2	44,370	147.9
	LLTVLHB-300-XX-LM-480						
LLTVLHB-400-XX-LM	80	400	58,480	146.2	59,160	147.9	
Narrow Beam (LN 25°x85°)	LLTVLHB-100-XX-LN	80	100	13,840	138.4	14,000	140
	LLTVLHB-100-XX-LN-480						
	LLTVLHB-150-XX-LN	80	150	20,760	138.4	21,000	140
	LLTVLHB-150-XX-LN-480						
	LLTVLHB-200-XX-LN	80	200	27,680	138.4	28,000	140
	LLTVLHB-200-XX-LN-480						
	LLTVLHB-300-XX-LN	80	300	41,520	138.4	42,000	140
	LLTVLHB-300-XX-LN-480						
LLTVLHB-400-XX-LN	80	400	55,360	138.4	56,000	140	

LHB Series Linear High Bay

Commercial & Industrial Buildings

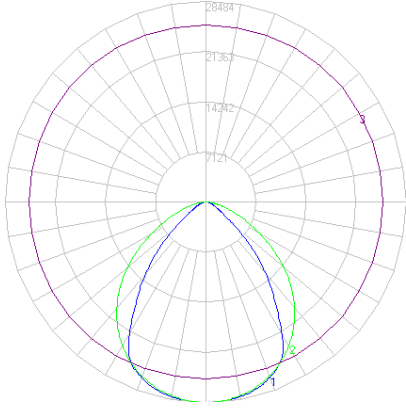
PERFORMANCE

Distribution	Model	CRI	Wattage	4000K		5000K	
				Lumens	Efficacy	Lumens	Efficacy
60°	LLTVLHB-100-XX-60	80	100	14,170	151.7	15,350	153.5
	LLTVLHB-100-XX-60-480						
	LLTVLHB-150-XX-60	80	150	22,755	151.7	23,025	153.5
	LLTVLHB-150-XX-60-480						
	LLTVLHB-200-XX-60	80	200	30,340	151.7	30,700	153.5
	LLTVLHB-200-XX-60-480						
	LLTVLHB-300-XX-60	80	300	45,510	151.7	46,050	153.5
	LLTVLHB-300-XX-60-480						
LLTVLHB-400-XX-60	80	400	60,680	151.7	61,400	153.5	
90°	LLTVLHB-100-XX-90	80	100	14,510	145.1	14,670	146.7
	LLTVLHB-100-XX-90-480						
	LLTVLHB-150-XX-90	80	150	21,765	145.1	22,005	146.7
	LLTVLHB-150-XX-90-480						
	LLTVLHB-200-XX-90	80	200	29,020	145.1	29,340	146.7
	LLTVLHB-200-XX-90-480						
	LLTVLHB-300-XX-90	80	300	43,530	145.1	44,010	146.7
	LLTVLHB-300-XX-90-480						
LLTVLHB-400-XX-90	80	400	58,040	145.1	58,680	146.7	

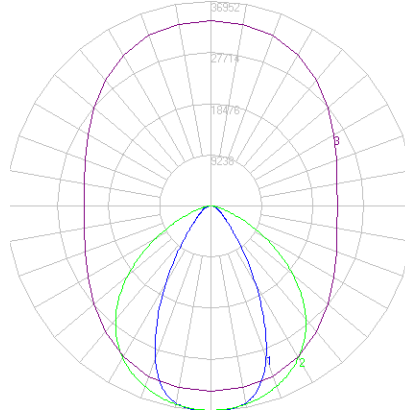
LHB Series Linear High Bay

Commercial & Industrial Buildings

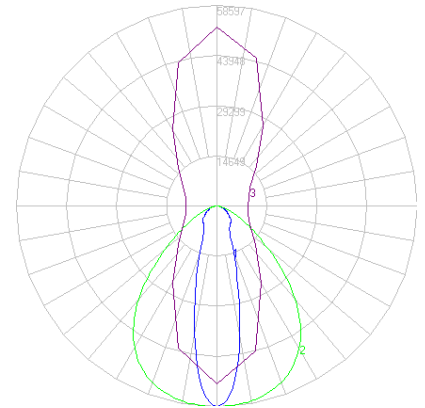
PHOTOMETRICS



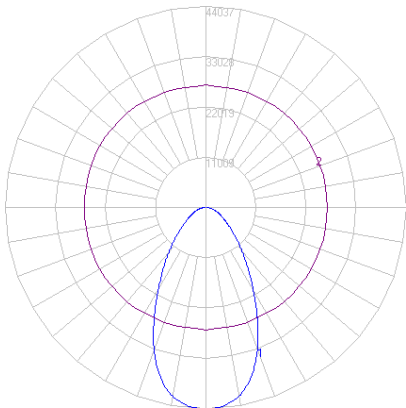
Wide Beam (Standard)
(LW 80°x100°)



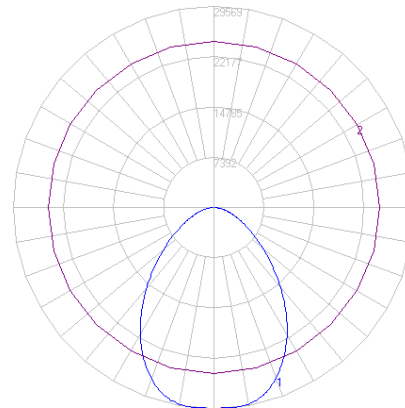
Medium Beam
(LM 60°x100°)



Narrow Beam
(LN 25°x85°)



60°



90°

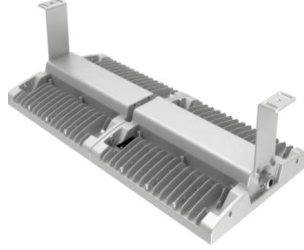
LHB Series Linear High Bay

Commercial & Industrial Buildings

MOUNTING



Loop Mounting (Standard)

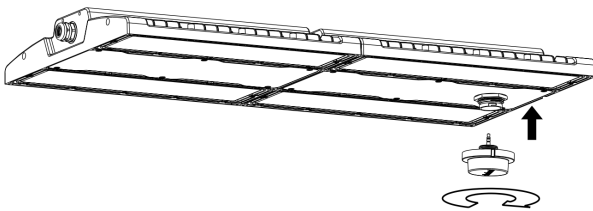


Ceiling Mounting



±60° Rotatable Bracket Mounting

MOTION SENSOR ASSEMBLY



ACCESSORIES

SKU	Description	Image
LLTASEN-PIR01	Plug-and-play Bi-level PIR Sensor	
LLTASEN-MIC01	Plug-and-play Bi-level Microwave Motion Sensor	
LLTASEN-RM01	Remote Controller for PIR Sensor and Microwave Motion Sensor	
LLTALHB-BRK60A	±60° Rotatable Bracket, Length is 7.20" (183mm)	
LLTALHB-BRK	Bracket, Length is 4.72" (120mm)	