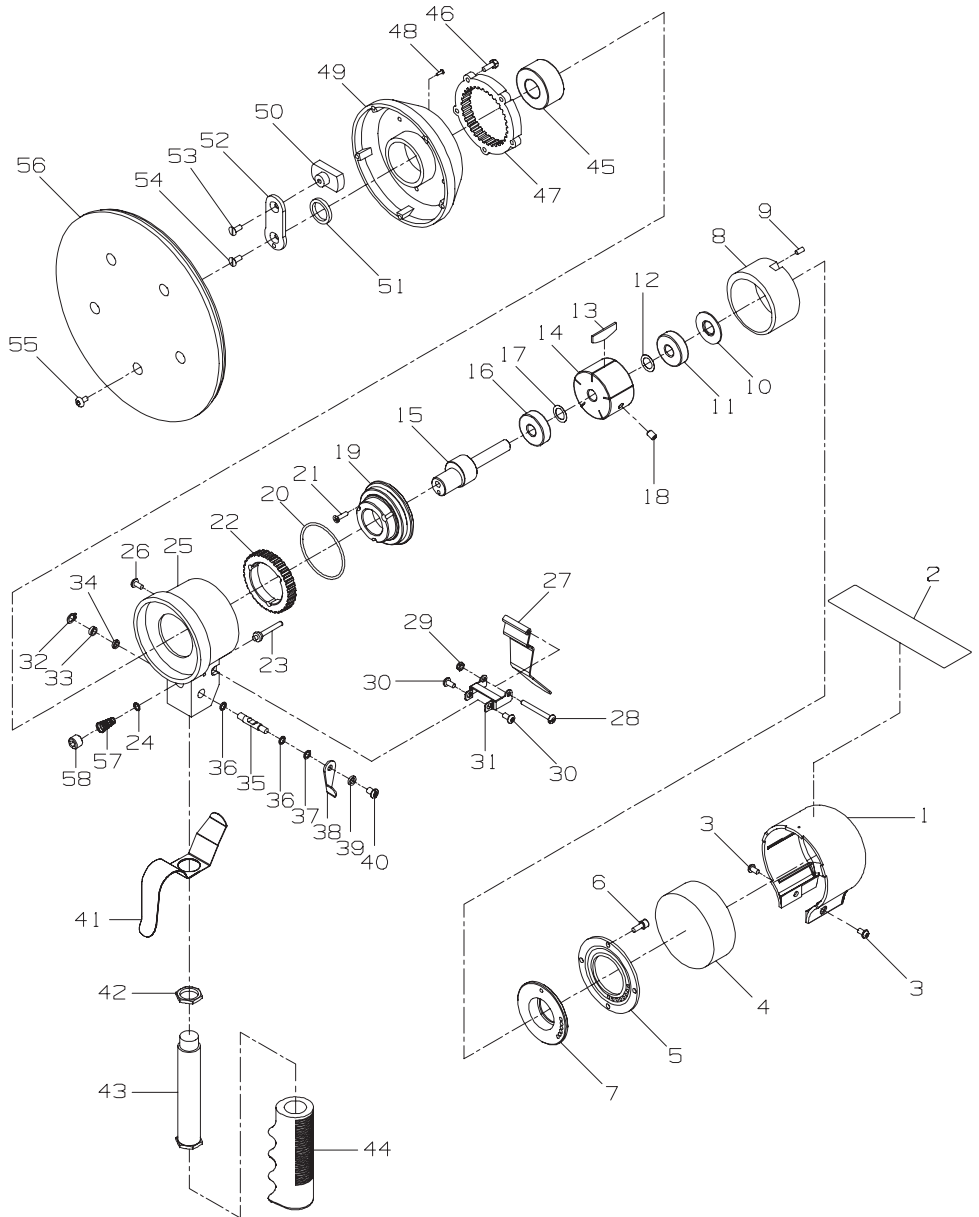


328B Air Orbital Sander Exploded Diagram



(Dwg. TPA1772)

328B Air Orbital Sander Parts List

Item	Part Description	Part Number	Item	Part Description	Part Number
1	Housing Cover Assembly	328B-A109	29	Nut	311-278
2	Nameplate	328B-301	30	Screw (2)	311-170
3	Screw (2)	311-78	31	Bracket	311-274
4	Muffler	311-311	32	Retainer Ring	311-168
5	Motor Plate	311-310	33	Washer	311-166
6	Motor Screw (4)	311-103	34	Flat Washer	311-167
7	Front End Plate	328B-11	35	Regulator	311-A165
8	Cylinder Assembly	311-A3	36	O-ring (2)	311-169
9	Pin	311-98	37	O-ring	311-65
10	Washer	311-25	38	Regulator Nut	311-270
11	Bearing	311-24	39	Washer	311-277
12	Shim	311-448	40	Bolt	311-279
13	Vane Packet (set of 5 Vanes)	311-42-5	41	Second Lever	311-271
	Rotor Assembly	328B-A53	42	Nut	311-155
14	Rotor	311-53	43	Handle	311-A465
15	Rotor Shaft	328B-54	44	Grip	311-160
16	Bearing	311-24	45	Bearing	328B-97
17	Shim	311-448	46	Screw (5)	328B-101
18	Set Screw	311-55	47	Internal Gear	328B-406
	Gear and Rear End Plate Assembly	328B-A12A	48	Screw (3)	311-279
	Rear End plate Assembly	---	49	Gear Cover	328B-236
19	Rear End Plate	---	50	Balance Nut	328B-836
20	O-ring	328B-68	51	Balance Washer	328B-18
21	Screw (3)	328B-104	52	Balance Shaft	328B-316
22	Gear	---	53	Screw	328B-841
23	Valve Stem	311-A161	54	Screw	328B-840
24	O-ring	311-169	55	Screw (5)	328B-17
25	Housing Assembly	328B-A40	56	Pad (8")	328B-825-8
26	Set Screw	328B-55	57	Spring	311-51
27	Lever	311-273	58	Screw	311-266
28	Screw	311-275			

Parts and Maintenance

When the life of the tool has expired, it is recommended that the tool be disassembled, degreased and parts be separated by material so that they can be recycled.

Tool repair and maintenance should only be carried out by an authorized Service Center.
Refer all communications to the nearest **Ingersoll-Rand** Office or Distributor.

Related Documentation

For additional information refer to:
Air Orbital Sander Product Safety Information Manual 04580387.
Air Orbital Sander Product Information Manual 04577128.

Manuals can be downloaded from www.irtools.com.



www.irtools.com

© 2005 Ingersoll-Rand Company

Form 80160948

Edition 2

June 2005