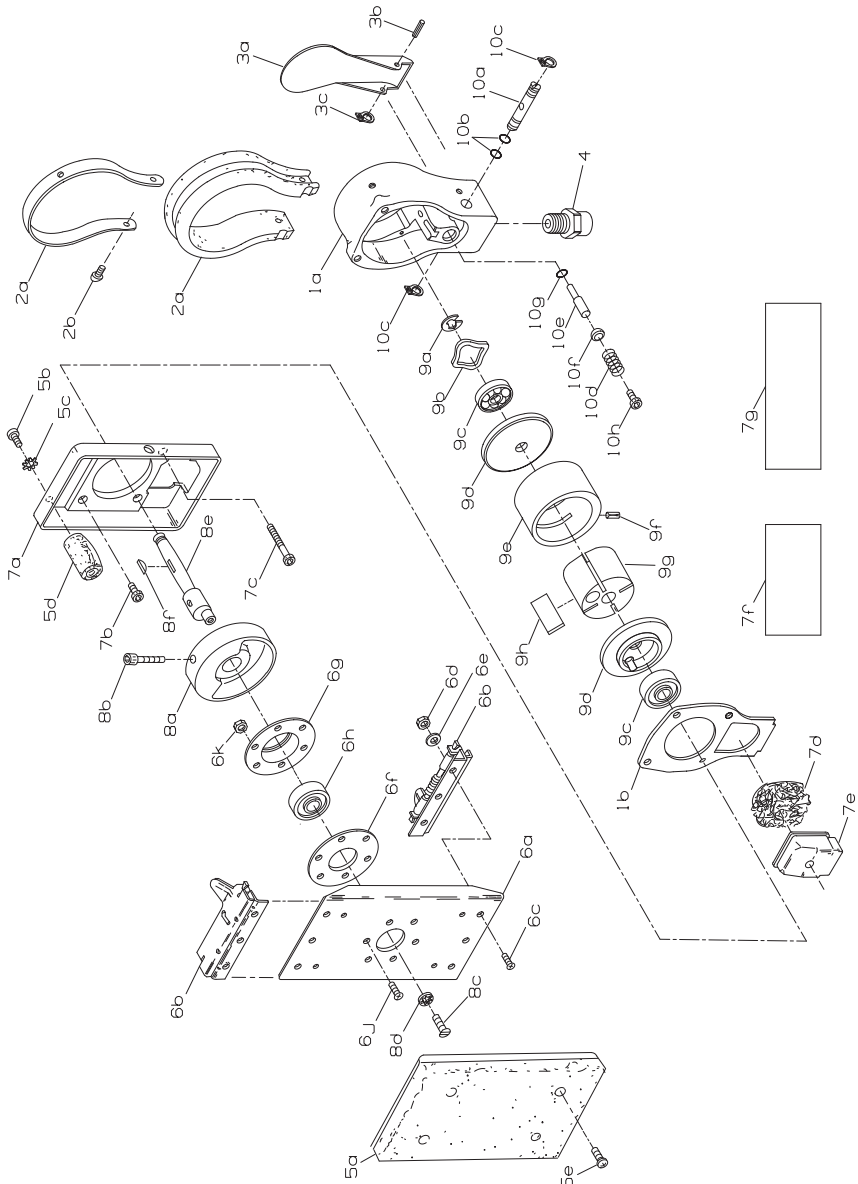


312A Orbital Sander Exploded Diagram



(Dwg. 16571622)

## 312A Orbital Sander Parts List

Item	Part Description	Part Number	Item	Part Description	Part Number
1	HOUSING ASSEMBLY	312A-A40	8	BALANCE BODY ASSEMBLY	312A-A236
1a	Cylinder Case	---	8a	Counterweight	---
1b	Cylinder Case Gasket	---	8b	Counterweight Retaining Screw	---
2	Grip Assembly	312A-A109	8c	Shoe Bearing Retaining Screw	---
2a	Hand Grip and Grip Retaining Band	---	8d	Retaining Screw Lock Washer	---
2b	Retaining Band Screw (4)	---	8e	Arbor	---
3	Lever Assembly	312A-A273	8f	Rotor Key	---
3a	Throttle Lever	---	9	MOTOR ASSEMBLY	312A-A53
3b	Throttle Lever Pin	---	9a	Rear Endplate Retainer	---
3c	Lever Retainer	---	9b	Wave Washer	---
4	Inlet Bushing	312A-565	9c	Rotor Bearing (2)	---
5	PAD ASSEMBLY	312A-A825	9d	Endplate (2)	---
5a	Sanding Pad	---	9e	Cylinder	---
5b	Mount Retaining Screw (4)	---	9f	Spring Pin	---
5c	Lock Washer (4)	---	9g	Rotor	---
5d	Rubber Mount (4)	312A-232	9h	Vane Pack (Set of 4)	312A-42-4
5e	Sanding Pad Retaining Screw (4)	---	10	VALVE ASSEMBLY	312A-A302
6	SANDING PAD SHOE ASSEMBLY	312A-A226	10a	Speed Regulator	---
6a	Sanding Pad Shoe	---	10b	Regulator Seal (2)	---
6b	Sanding Pad Clamp (2)	---	10c	Regulator Retainer (2)	---
6c	Pad Clamp Retaining Screw (6)	---	10d	Throttle Valve Spring	---
6d	Pad Clamp Nut (6)	---	10e	Throttle Valve Plunger	---
6e	Lock Washer (6)	---	10f	Valve O-Ring	---
6f	Bearing Housing Spacer	---	10g	Plunger O-Ring	---
6g	Shoe Bearing Housing	---	10h	Valve Plug	---
6h	Sanding Pad Shoe Bearing	312A-22			
6j	Bearing Housing Retaining Screw (6)	---			
6k	Retaining Screw Nut (6)	---			
7	BASE ASSEMBLY	312A-A140			
7a	Sander Base	---			
7b	Short Cylinder Case Screw (2)	---			
7c	Long Cylinder Case Screw (2)	---			
7d	Muffler	---			
7e	Deflector	---			
7f	Nameplate	312A-301			
7g	Warning Label	WARNING-28-99			

## Parts and Maintenance

When the life of the tool has expired, it is recommended that the tool be disassembled, degreased and parts be separated by material so that they can be recycled.

Tool repair and maintenance should only be carried out by an authorized Service Center.

Refer all communications to the nearest **Ingersoll-Rand** Office or Distributor.

## Related Documentation

For additional information refer to:  
 Rotary Air Sander, Polisher or Buffer Product Safety Information Manual Form 04584967,  
 Air Orbital Sander Product Information Manual Form 04581575.

Manuals can be downloaded from [www.irtools.com](http://www.irtools.com).