



Instructions For Model **2130AP** Super Duty Automotive Impact Wrench

NOTICE

The 2130AP series of Impact Wrenches are designed for use in general automotive repair, tire service and heavy duty fleet applications.

WARNING



- **IMPORTANT SAFETY INFORMATION ENCLOSED - SAVE THESE INSTRUCTIONS**
- **READ AND UNDERSTAND THIS MANUAL BEFORE OPERATING THIS PRODUCT**
- **IT IS YOUR RESPONSIBILITY TO MAKE THIS SAFETY INFORMATION AVAILABLE TO OTHERS THAT WILL OPERATE THIS PRODUCT**
- **FAILURE TO OBSERVE THE FOLLOWING WARNINGS COULD RESULT IN INJURY**

PLACING TOOL IN SERVICE

- Always install, operate, inspect and maintain this product in accordance with all applicable standards and regulations (local, state, country, federal, etc.).
- Always use clean, dry air at 90 psig (6.2 bar/620 kPa) maximum air pressure at the inlet. Higher pressure may result in hazardous situations including excessive speed, rupture, or incorrect output torque or force.
- Be sure all hoses and fittings are the correct size and are tightly secured. See Dwg. TPD905-2 for a typical piping arrangement.
- Ensure an accessible emergency shut off valve has been installed in the air supply line, and make others aware of its location.
- Do not use damaged, frayed or deteriorated air hoses and fittings.
- Keep clear of whipping air hoses. Shut off the compressed air before approaching a whipping hose.
- Always turn off the air supply, bleed the air pressure and disconnect the air supply hose before installing, removing or adjusting any accessory on this tool, or before performing any maintenance on this tool or any accessory.
- Do not lubricate tools with flammable or volatile liquids such as kerosene, diesel or jet fuel. Use only recommended lubricants.
- Use only proper cleaning solvents to clean parts. Use only cleaning solvents which meet current safety and health standards. Use cleaning solvents in a well ventilated area.
- Keep work area clean, uncluttered, ventilated and illuminated.
- Do not remove any labels. Replace any damaged label.

USING THE TOOL

- Always wear eye protection when operating or performing maintenance on this tool.
- Always wear hearing protection when operating this tool.
- Always use Personal Protective Equipment appropriate to the tool used and material worked. This may include dust mask or other breathing apparatus, safety glasses, ear plugs, gloves, apron, safety shoes, hard hat and other equipment.
- When wearing gloves always be sure that the gloves will not prevent the throttle mechanism from being released. This tool is not designed for working in explosive environments, including those caused by fumes and dust, or near flammable materials.
- This tool is not insulated against electric shock.
- Prevent exposure and breathing of harmful dust and particles created by power tool use.

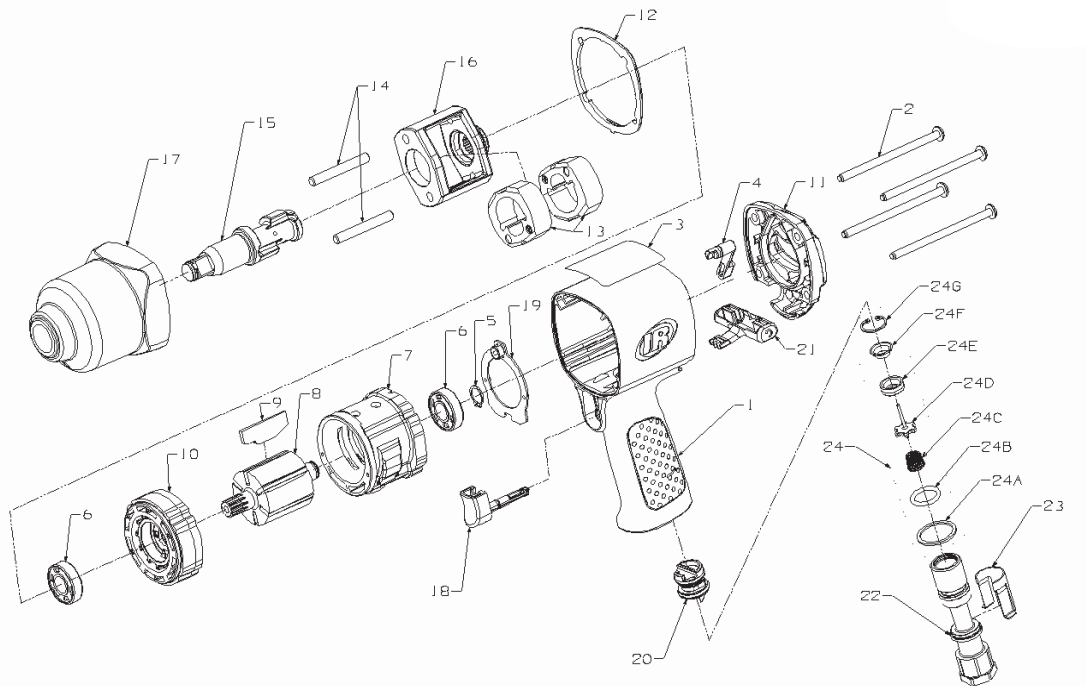
Some dust created by power sanding, sawing, grinding, drilling and other construction activities contains chemicals known to cause cancer, birth defects or other reproductive harm. Some examples of these chemicals are:

- lead from lead based paints,
- crystalline silica from bricks and cement and other masonry products, and
- arsenic and chromium from chemically treated lumber.

Your risk from these exposures varies, depending on how often you do this type of work. To reduce your exposure to these chemicals: work in a well ventilated area, and work with approved safety equipment, such as those dust masks that are specially designed to filter out microscopic particles.

EXPLODED VIEW

Model 2130AP



TP2189AP

PARTS LIST

Model 2130AP



When Ordering, use applicable Part Number

ITEM	DESCRIPTION	PART #	ITEM	DESCRIPTION	PART #
*	Housing Assy	2130AP-A40	24	Inlet Parts Kit	2131-K303
1	Housing	----	24A	Washer.....	----
3	Nameplate/Warning Label	----	24B	O-Ring, Seal	----
2	Screw, HammerCase (4 required)	2130-638	24C	Spring.....	----
3	Nameplate/Warning Label	2130-AP-301	24D	Valve.....	----
4	Power Regulator Assy	2130-D249	24E	Seat.....	----
5	Retaining Ring	2131-6	24F	Support	----
6	Ball Bearing (2 required)	402-22	24G	Retainer	----
7	Cylinder	2130-3			
8	Rotor	2131-53	*	Tune-Up Kit.....	CR2130-TK1
9	Vane Pack (set of 6)	2131-42A-6	5	Retaining Ring	----
10	End Plate	2131-11	6	Ball Bearing (2)	----
11	Rear Cap	2130-12	9	Vane Pack (set of 6).....	----
12	Hammer Case Gasket	2130-36	12	Hammer Case Gasket	----
*	Impact Mechanism Kit (2130AP)	2130-IMK1	18	Trigger Assy.....	----
*	Impact Mechanism Kit (2130AP-2)	2130-IMK2	19	Motor Gasket.....	----
12	Hammer Case Gasket	----	20	Reverse Valve Assy.....	----
13	Hammer (2)	----	24	Inlet Parts Kit	----
14	Hammer Pin (2)	----			
15	Anvil Assembly	----	*	Inlet Clip Removal Tool	2131-322
16	Hammer Frame	----			
*	Kit Grease	----			
17	HammerCase Assy	2130-D727A			
18	Trigger Assy	2130-D1093			
19	Motor Gasket	2130-283			
20	Reverse Valve Assy	2130-D329			
21	Reverse Button	2130-75			
*	Inlet Bushing Assy (Includes 22, 23 & 24)	2131-D565			
22	Inlet Bushing	2131-565			
23	Inlet Clip	2131-57			