

VERSICHARGE™ AC SERIES

# Charging on with cutting-edge technology

[usa.siemens.com/versicharge](http://usa.siemens.com/versicharge)

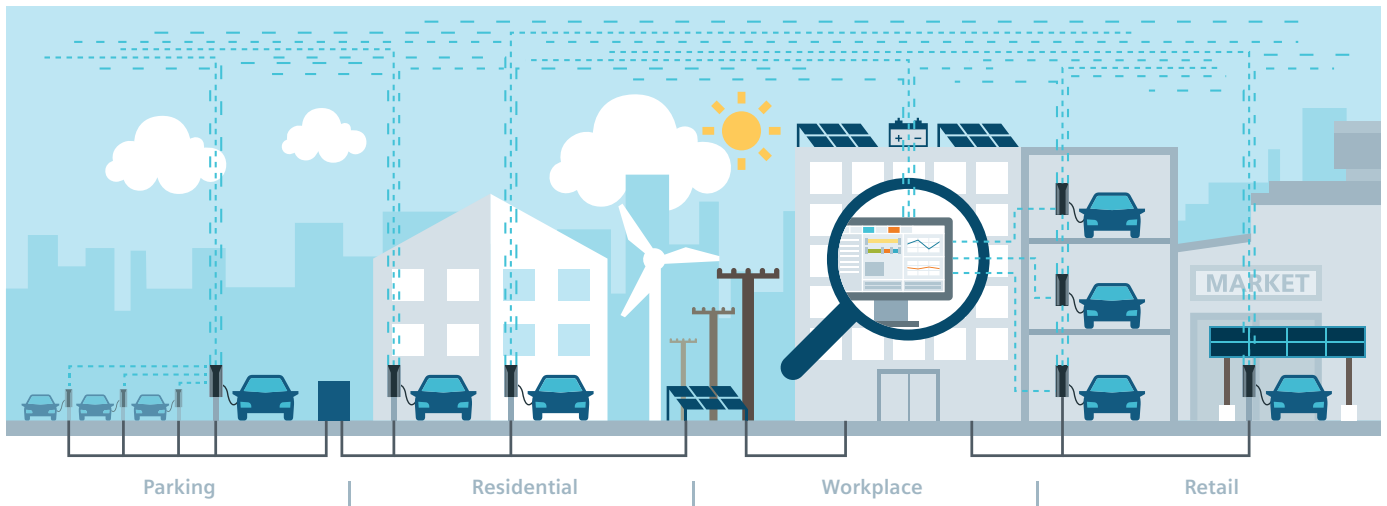
**SIEMENS**

# The VersiCharge™ AC series

## Powerful, versatile, cost-efficient

Siemens VersiCharge chargers have stood for superior quality, ruggedness, and proven technology for more than a decade and have reliably provided millions of charges to electric vehicle (EV) drivers worldwide. The new third generation VersiCharge AC charger is continuing this tradition with numerous groundbreaking enhancements, a fresh and appealing design, and up to 11.5 kW of alternating current (AC) charging power. It also provides various communication options, including the option to establish a parent-child configuration.

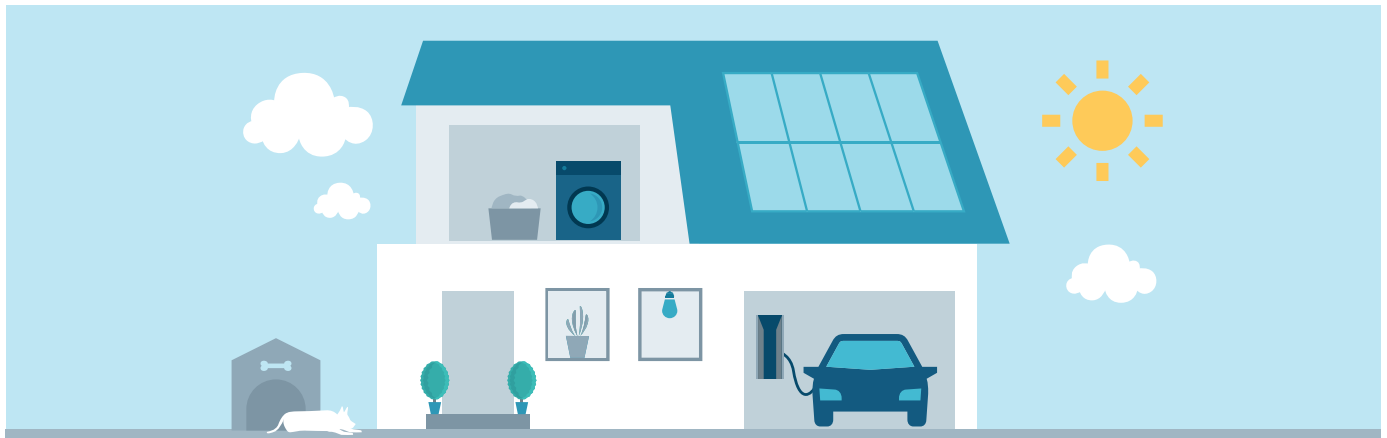
The VersiCharge AC charger can be connected to the customer's preferred back-end system, making it scalable and cost-efficient. It also can interact with a building management system, such as Siemens Designo CC and Win CC. The rugged and slender VersiCharge AC charger is suitable for both indoor and outdoor use and can either be mounted on a wall or a supplementary post.



## The ideal solution for any application

Uniquely tailored for both commercial and home charging, the VersiCharge AC charger comes with an easy-to-use mobile application and can charge any standard EV.

The VersiCharge AC home charger is revenue accurate and offers cutting-edge technology with the most affordable pricing.



## VersiCharge™ AC series – Technical Data

**Features and functions**

Charging mode	Level 2
Vehicle connection	J1772 plug with 20 ft cable, 40 A / 48 A / integrated cable management
AC power output	Single phase up to 9.6 kW (40 A) - requires a 50 A breaker, or 11.5 kW (48 A) - requires a 60 A breaker
Mounting options	Wall and post mounting, see accessories
Touch button	Time delay, return to maximum power level, reset ground fault
Charging status LEDs	Power, time delay, charging state, reduced power level, authentication, cold start
Communication status LEDs	Connected / not connected during operation, signal strength during commissioning
Parent / child network:	Connects up to nine child units by Wi-Fi (100 ft line of sight)
Load management	Via OCPP

**Communication**

Interfaces	Ethernet, Wi-Fi, for parent units additionally LTE, WCDMA
User authentication	RFID (local Whitelist, MiFare)
Configuration	Via Siemens mobile app or the PC Configuration Tool
Back-end protocol	OCPP 1.6, upgradeable to OCPP 2.0.1
Software upgrade	Over-the-air (OTA)

**Electrical design**

Power supply voltage	Single phase: 208 V / 240 V AC, 60 Hz
Rated current settings (A)	12, 16, 24, 32, 40, 48
Crosswire section	Single phase: 8 AWG / 6 AWG (90° C rated wire)
Network type	Single phase / split phase
Energy metering	Embedded metering, +/- 1% accuracy
Ground fault protection	20 mA
Over voltage protection	Under voltage: 167 V (minimum 80 V) / over voltage: 267 V (maximum 275 V)
Over current protection	Current +10% above configured threshold, minimum +2A, 5 seconds
Operating altitude	9,840 ft

**General design**

Environmental rating	Indoor and outdoor, NEMA 4, IK 8
Dimensions (HxWxD)	16.10 in x 7.09 in x 3.78 in
Weight	17 lbs
Ambient conditions	Operating temperature: -31° F - +122° F, storage temperature: -40° F to +140° F, 98% non-condensing
Colors	Silver metallic (Pantone 10077), black holster

**Certificates and standards**

cUL listed	According to UL 1998, UL 991, UL2594/CSA C22.2 No.280/NMX-J-677-ANCE, UL 2231-1/CSA C22.2 No.281.1/NMX-J-668-1, UL 2231-2/CSA C22.2 No.281.2/NMX-J-668/2-ANCE, UL 2251/CSA C22.2 No.282/NMX-J-678-ANCE
EMC	FCC Part 15.247, FCC Part 15B, FCC Part 15C

		Maximum current	Model number	Wi-Fi and Ethernet	RFID identification	Embedded metering	LTE WCDMA	Installed SIM card
Residential version	Smart	40 A	8EM1312-4CF18-0FA3	✓	-	✓	-	-
		48 A	8EM1312-5CF18-0FA3					
Commercial versions	Child	40 A	8EM1310-4CF14-0GA0	✓	✓	✓	-	-
		48 A	8EM1310-5CF14-0GA0					
	Parent	40 A	8EM1310-4CF14-1GA2	✓	✓	✓	✓	✓
		48 A	8EM1310-5CF14-1GA2					
Buy American Commercial "Blue" versions	Child	48 A	8EM13155CG140GF0	✓	✓	✓	-	-
	Parent	48 A	8EM13155CG141GF2	✓	✓	✓	✓	✓

Back-end protocol: OCPP 1.6, upgradeable to OCPP 2.0.1

**Data plans for chargers:** Siemens offers chargers with data plans for customer convenience. See table below for data plans.

Description	Catalog Number
Multi-Carrier Pooled Data Plan - 1-year data plan, 1 GB capped monthly bandwidth (supports one parent charger and nine child units). This is an annual fee.	US2:DATA1YRMULTI
Extended Warranty per Level 2 Charger - 1 additional year, no in / out services	US2:VCEXWAR1YR
Extended Warranty per Level 2 Charger - 2 additional years, no in / out services	US2:VCEWAR2YR
Standard Post - can support one or two chargers. Comes with install kit, made of aluminum. Includes 3-year warranty.	US2:VCPOSTGRY2
Standard Post Cable Retraction Unit - used with US2:VCPOSTGRY2 post design. One required for each charger. Includes 3-year warranty.	US2:VCCMSSP



**Legal Manufacturer**

Siemens Industry, Inc.  
3617 Parkway Ln  
Peachtree Corners, GA 30092  
United States of America

Telephone: +1 (800) 333-7421  
recharge.us@siemens.com

Article No. SIDS-B40060-00-4AUS-R03  
© 04.2022, Siemens Industry, Inc.

This document contains a general description of available technical options only, and its effectiveness will be subject to specific variables, including field conditions and project parameters. Siemens does not make representations, warranties, or assurances as to the accuracy or completeness of the content contained herein. Siemens reserves the right to modify the technology and product specifications in its sole discretion without advance notice.