

CLEERLINE HD SPLICE CASSETTES

For High Density/Data Environments



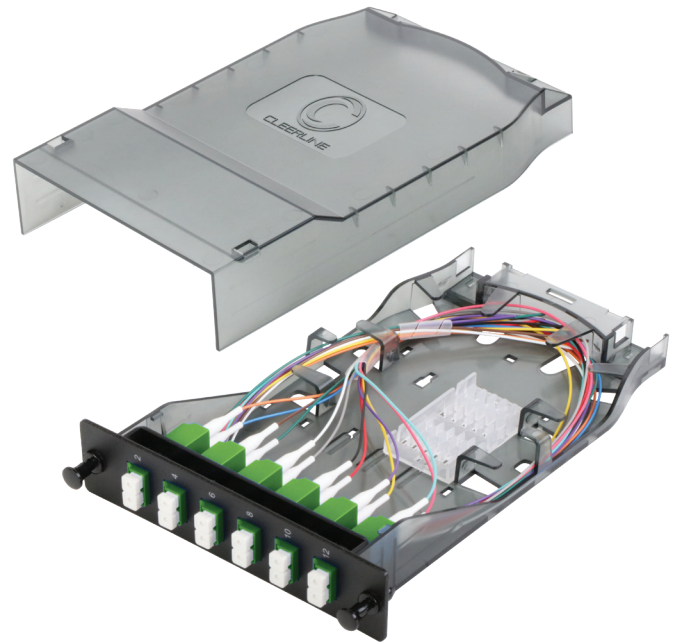
Preloaded Splice Cassettes

Cleerline HD Splice Cassettes provide an efficient solution for managing fusion-spliced fibers. Each cassette comes preloaded with 6-24 x 900µm 1 meter long fiber pigtailed, eliminating the need for a separate splice tray. Inside the cassette, splice holders and a cable winding area allow cable management and organization.

These splice cassettes are sized to fit within any LGX compatible opening.

Cleerline Splice Cassettes have a removable transparent cover to allow easy fiber verification. All cassettes include heat shrink splice protection tubes, removeable splice organizers, and cable management accessories. Splice cassettes are available preloaded in OM3/OM4 (multimode), OS2 (single mode) fibers, and OS2 APC (angled polish connector) configurations.

Cassettes adapters and fibers are color-coded according to TIA standards.



FEATURES AND BENEFITS

- Space-saving design (LGX compatible)
- Transparent housing for easy fiber verification
- Preloaded design with TIA color-coded pigtail
- Pigtail design allows either both ribbon splice and individual fiber splice
- No additional splice trays required
- Cable winding area for fiber management

APPLICATIONS

- Applications where enclosure and protection of splices is desired.
- High density environments, data centers, telecommunications network
- Applications requiring fusion splicing

PART NUMBER	FIBER	CONNECTOR TYPE	FIBERS	INSERTION LOSS	RETURN LOSS	PIGTAIL REFLECTANCE	ACCESSORIES
SHDSC06-MM	OM3 / OM4	SC	6	Max ≤ 0.3 dB	> 50 dB	RL > 50 dB	Cable Ties / Heat Shrink Tubes
SHDSC12-MM	OM3 / OM4	SC	12	Max ≤ 0.3 dB	> 50 dB	RL > 50 dB	Cable Ties / Heat Shrink Tubes
SHDLC12-MM	OM3 / OM4	LC	12	Max ≤ 0.3 dB	> 50 dB	RL > 50 dB	Cable Ties / Heat Shrink Tubes
SHDLC24-MM	OM3 / OM4	LC	24	Max ≤ 0.3 dB	> 60 dB	RL > 50 dB	Cable Ties / Heat Shrink Tubes
SHDSC06-SM-UPC	OS2	SC	6	Max ≤ 0.3 dB	> 50 dB	RL > 50 dB	Cable Ties / Heat Shrink Tubes
SHDSC12-SM-UPC	OS2	SC	12	Max ≤ 0.3 dB	> 50 dB	RL > 50 dB	Cable Ties / Heat Shrink Tubes
SHDLC12-SM-UPC	OS2	LC	12	Max ≤ 0.3 dB	> 50 dB	RL > 50 dB	Cable Ties / Heat Shrink Tubes
SHDLC24-SM-UPC	OS2	LC	24	Max ≤ 0.3 dB	> 60 dB	RL > 50 dB	Cable Ties / Heat Shrink Tubes
SHDSC06-SM-APC	OS2	SC	6	Max ≤ 0.3 dB	> 50 dB	RL > 50 dB	Cable Ties / Heat Shrink Tubes
SHDSC12-SM-APC	OS2	SC	12	Max ≤ 0.3 dB	> 50 dB	RL > 50 dB	Cable Ties / Heat Shrink Tubes
SHDLC12-SM-APC	OS2	LC	12	Max ≤ 0.3 dB	> 50 dB	RL > 50 dB	Cable Ties / Heat Shrink Tubes
SHDLC24-SM-APC	OS2	LC	24	Max ≤ 0.3 dB	> 60 dB	RL > 50 dB	Cable Ties / Heat Shrink Tubes

CONSTRUCTION

OPTICAL SPECIFICATIONS

Pigtail Return Loss	> 50 dB
Module Insertion Loss	≥ 0.3 dB
Module Return Loss (UPC)	> 50 dB
Module Return Loss (APC)	> 60 dB

TEMPERATURE RANGE

Operating	-20°C to 60°C
Installation & Assembly	-5°C to 50°C
Storage Temperature	-25°C to 70°C

CASSETTE HARDWARE

Fibers	6, 12, or 24
Pigtails	6, 12, or 24
Adapter Type Front	LC or SC
Pigtail Type	900µm, TIA Color-Coded
Included Splice Protectors	12 or 24
Adapter Color	According to Fiber Type
Removable splice holders	2
Cable management	Cable ties & velcro
Cable entry grommet	2

DIMENSIONS

SHDSC06-MM	130 x 166.5 x 29 mm / 5.1 x 6.6 x 1.1 in
SHDSC12-MM	130 x 166.5 x 29 mm / 5.1 x 6.6 x 1.1 in
SHDLC12-MM	130 x 166.5 x 29 mm / 5.1 x 6.6 x 1.1 in
SHDLC24-MM	130 x 166.5 x 29 mm / 5.1 x 6.6 x 1.1 in
SHDSC06-SM-UPC	130 x 166.5 x 29 mm / 5.1 x 6.6 x 1.1 in
SHDSC12-SM-UPC	130 x 166.5 x 29 mm / 5.1 x 6.6 x 1.1 in
SHDLC12-SM-UPC	130 x 166.5 x 29 mm / 5.1 x 6.6 x 1.1 in
SHDLC24-SM-UPC	130 x 166.5 x 29 mm / 5.1 x 6.6 x 1.1 in
SHDSC06-SM-APC	130 x 166.5 x 29 mm / 5.1 x 6.6 x 1.1 in
SHDSC12-SM-APC	130 x 166.5 x 29 mm / 5.1 x 6.6 x 1.1 in
SHDLC12-SM-APC	130 x 166.5 x 29 mm / 5.1 x 6.6 x 1.1 in
SHDLC24-SM-APC	130 x 166.5 x 29 mm / 5.1 x 6.6 x 1.1 in

