



5KFP13CR



KitchenAid







English	5
Deutsch	
Français	
Italiano	
Nederlands	
Español	
Português	
Ελληνικά	
Svenska	
Norsk	
Suomi	
Dansk	
Íslenska	
Русский	
Polski	
Český	
Türkçe	
العربية	







TABLE OF CONTENTS

PARTS AND FEATURES 6
 Parts and accessories 6

CITRUS REAMER SAFETY 7
 Important safeguards 7
 Waste disposal 8

USING THE CITRUS REAMER 8
 Before first use 8
 Installing the Citrus Reamer 8
 Running the Citrus Reamer 9

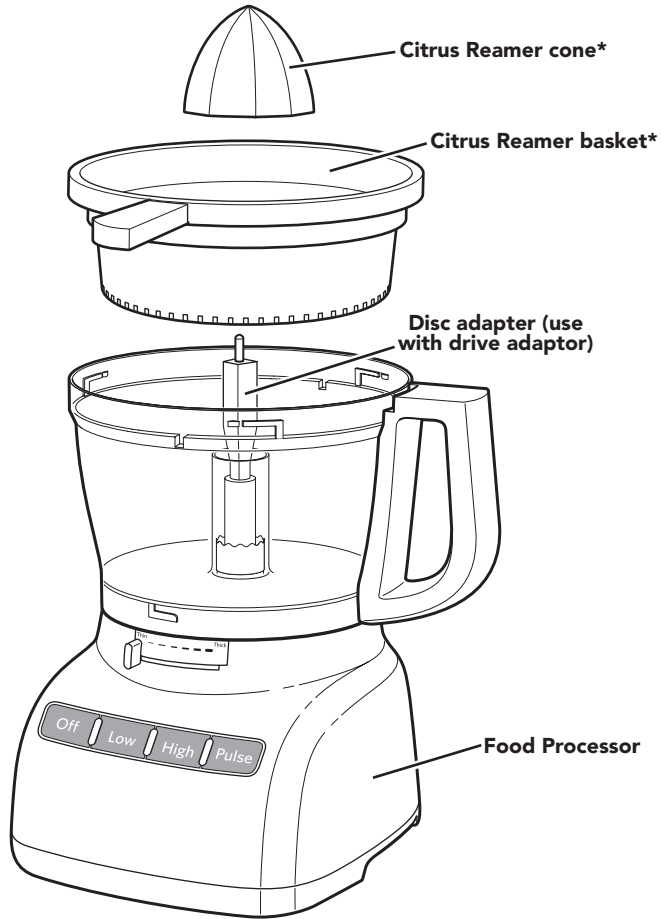
CARE AND CLEANING 10

WARRANTY AND SERVICE 11



PARTS AND FEATURES

PARTS AND ACCESSORIES



*For use with the 3.1 L Food Processor (5KFP1335/1325).
Use the Citrus Reamer to juice your favorite fresh citrus fruits.



CITRUS REAMER SAFETY

Your safety and the safety of others are very important.

We have provided many important safety messages in this manual and on your appliance. Always read and obey all safety messages.



This is the safety alert symbol.

This symbol alerts you to potential hazards that can kill or hurt you and others.

All safety messages will follow the safety alert symbol and either the word “DANGER” or “WARNING.” These words mean:

! DANGER

You can be killed or seriously injured if you don't **immediately** follow instructions.

! WARNING

You can be killed or seriously injured if you don't follow instructions.

All safety messages will tell you what the potential hazard is, tell you how to reduce the chance of injury, and tell you what can happen if the instructions are not followed.

IMPORTANT SAFEGUARDS

When using electrical appliances, basic safety precautions should always be followed, including the following:

1. Read all instructions. Misuse of appliance may result in personal injury.
2. The use of attachments not recommended or sold by KitchenAid may cause fire, electric shock, or injury.
3. Blades are sharp. Care should be taken when handling the sharp cutting blades and during cleaning.
4. To reduce the risk of injury, never place cutting blade or discs on base without first putting bowl properly in place.
5. Also see the Important Safeguards section included in the Instruction Manual provided with your Food Processor.


SAVE THESE INSTRUCTIONS



CITRUS REAMER SAFETY

WASTE DISPOSAL

Disposal of packing material

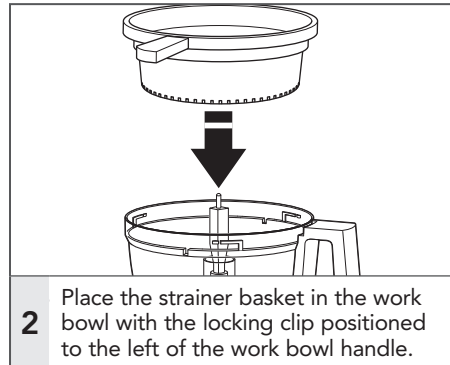
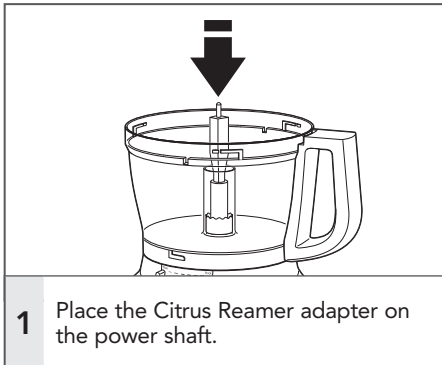
The packing material is 100% recyclable and is marked with the recycle symbol . The various parts of the packing must therefore be disposed of responsibly and in full compliance with local authority regulations governing waste disposal.

USING THE CITRUS REAMER

BEFORE FIRST USE

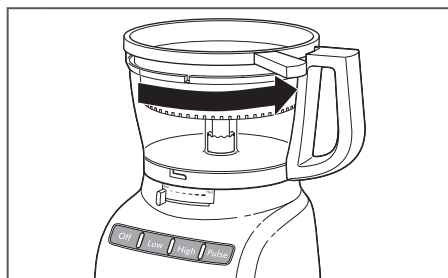
Before using your Citrus Reamer for the first time, wash the strainer basket and cone either by hand or in the dishwasher (see the "Care and Cleaning" section).

INSTALLING THE CITRUS REAMER

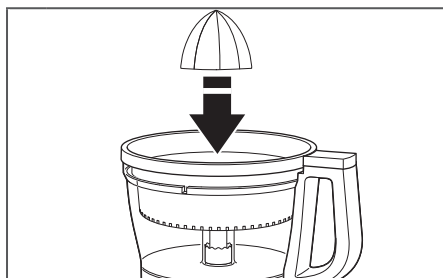




USING THE CITRUS REAMER

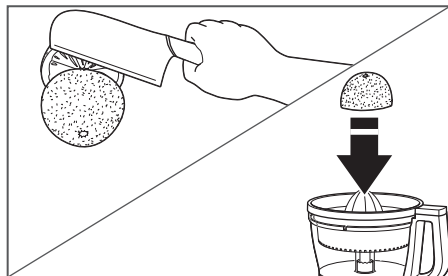


3 Turn the basket counter clockwise until the clip locks into the handle.

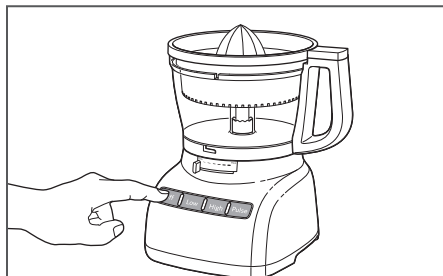


4 Place the cone inside the strainer basket, over the power shaft. It may be necessary to rotate the cone until it falls into place.

RUNNING THE CITRUS REAMER



1 Cut the citrus fruit in half, then place one half on the cone, cut side facing down, keeping it pressed firmly to the cone with your hands. Press the LOW button.



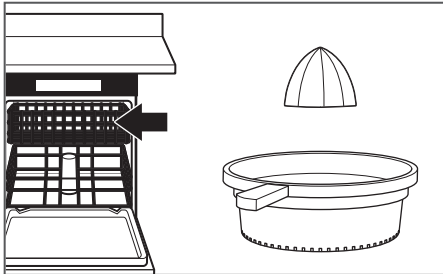
2 Press the OFF button when all juice is extracted. Repeat with remaining fruit.





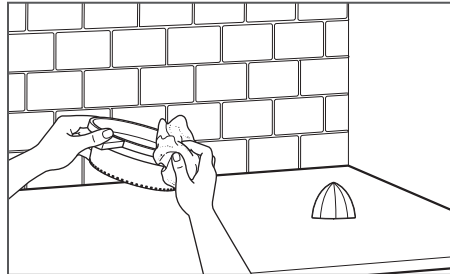
CARE AND CLEANING

CLEANING THE CITRUS REAMER



1

All parts of the Citrus Reamer are dishwasher safe. If washing the parts by hand, avoid the use of abrasive cleaners or scouring pads.



2

Dry thoroughly after washing. Disassembled parts should be stored in a location out of the reach of children.





WARRANTY AND SERVICE

KITCHENAID FOOD PROCESSOR ACCESSORY WARRANTY

Length of Warranty:	KitchenAid Will Pay For:	KitchenAid Will Not Pay For:
Europe, Middle East and Africa: 5KFP13CR Two years full warranty from date of purchase.	The replacement parts and repair labour costs to correct defects in materials or workmanship. Service must be provided by an Authorised KitchenAid Service Centre.	A. Repairs when Food Processor Accessory is used for operations other than normal household food preparation. B. Damage resulting from accident, alterations, misuse, abuse, or installation/operation not in accordance with local electrical codes.

KITCHENAID DOES NOT ASSUME ANY RESPONSIBILITY FOR INDIRECT DAMAGES.

CUSTOMER SERVICE

For any questions, or to find the nearest Authorised KitchenAid Service Centre in your country, please find our contact details below.

Number for general questions:  00800 3810 4026

In other countries:

For all product related questions and after sales matters, please contact your dealer to obtain the name of the nearest Authorised KitchenAid Service/Customer Centre.

For more information, visit our website at:

www.KitchenAid.co.uk
www.KitchenAid.eu

©2017 All rights reserved.
Specifications subject to change without notice.