



[BothLightingUSA.com](http://BothLightingUSA.com)



# S4/S6 Power Board Replacement Guide

Providing you with a reliable and hassle free experience.

All order come with a 2 year no questions asked warranty!

Official Lighting Provider of @DjRickWeb and @JoeBunn

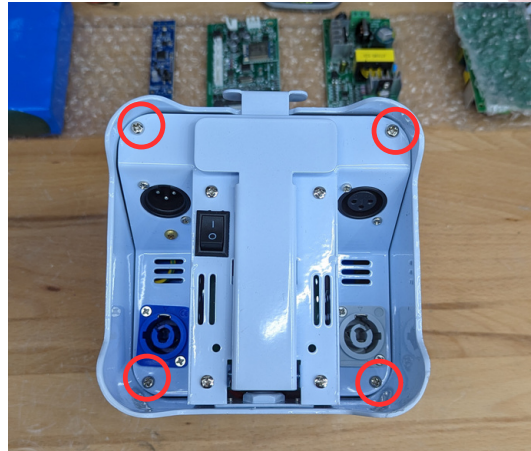
# Tools and Replacement Parts

- Magnetic Rod
- Small and Large Screw Driver
- Flat Head Screw Driver
- Powerboard



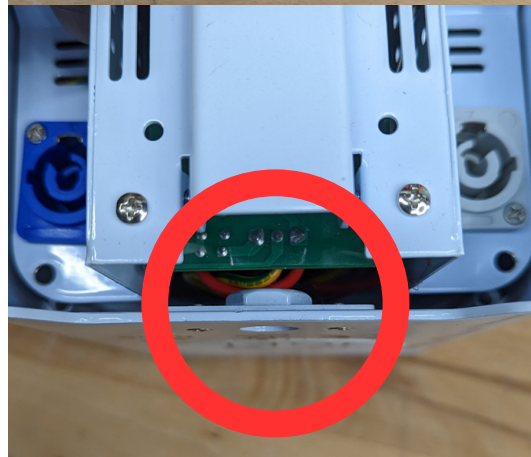
## Step 1

- Locate the 4 screws on the bottom of your light (**Refer to the image to your right**)



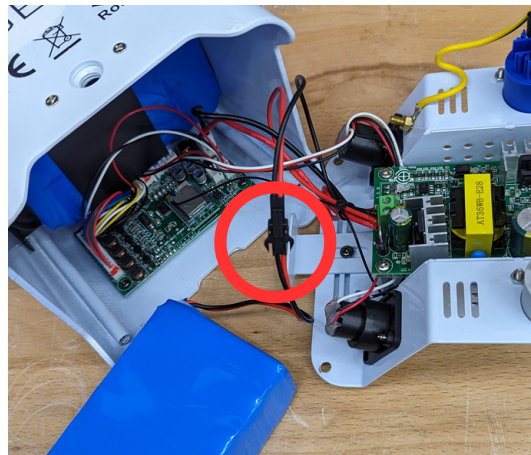
## Step 2

- Start to lift your bottom at a 30-degree angle to avoid damaging the power board (**Refer to the image to your right**)
- Unscrew the 4 screws and place them in a safe area



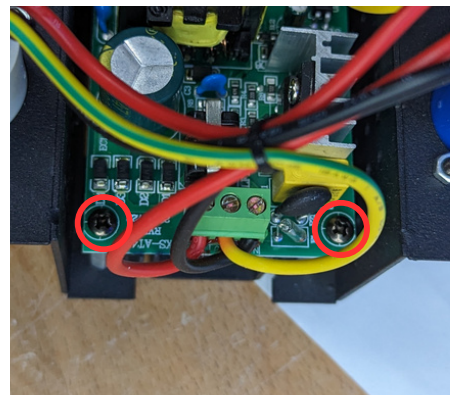
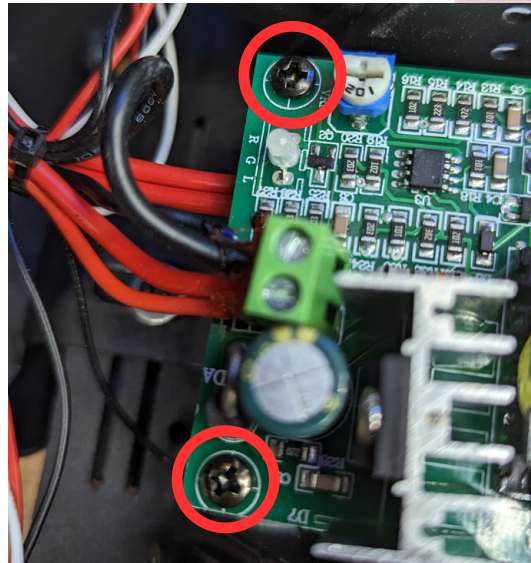
## Step 3

- Disconnect your bad battery to avoid injuries (**Refer to the image to your right**)



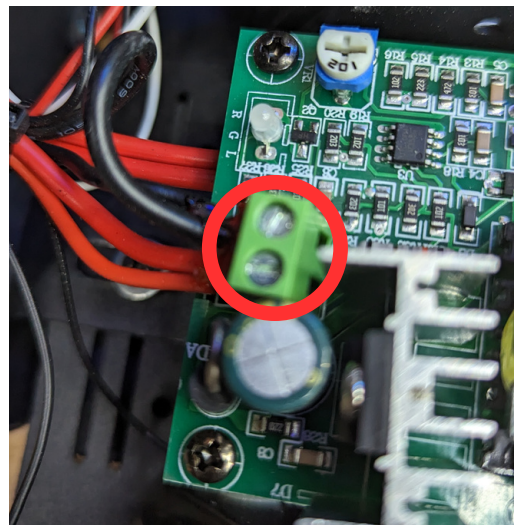
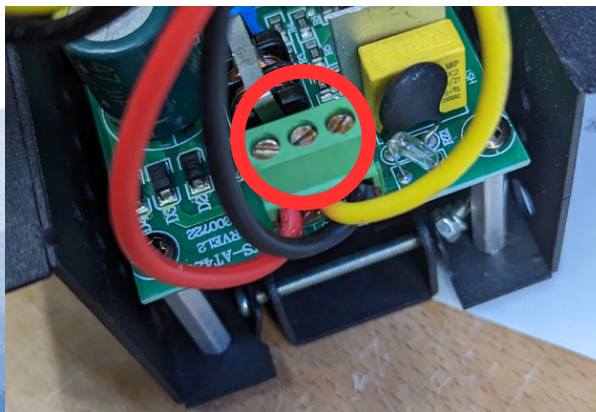
## Step 4

- Flip over the bottom to locate the power board.
- Locate the 4 screws on the bottom of your mainboard (**Refer to the image to your right**)
- Unscrew the 4 screws and place them in a safe area, **this is where the small screwdriver and the magnetic rod is your friend**



## Step 5

- Use Flathead to slightly unscrew the screws to allow you to remove the cables connected to the powerboard (**Refer to the image to your right and below**)



## Step 6

- Back track steps to replace the powerboard
- use pictures above as reference for connections

