



[BothLightingUSA.com](http://BothLightingUSA.com)



# S4/S6 Battery Replacement Guide

Providing you with a reliable and hassle free experience.

All order come with a 2 year no questions asked warranty!

Official Lighting Provider of @DjRickWeb and @JoeBunn

# Tools and Replacement Parts

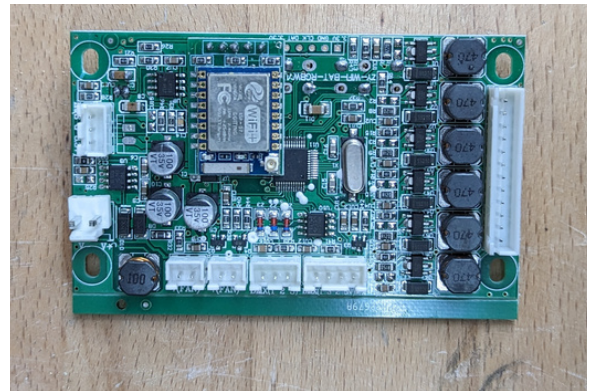
- Magnetic Rod
- Small and Large Screw Driver



- S4/S6 Battery

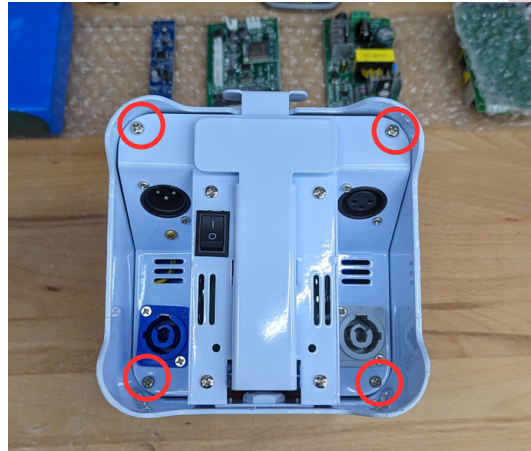


- Mainboard



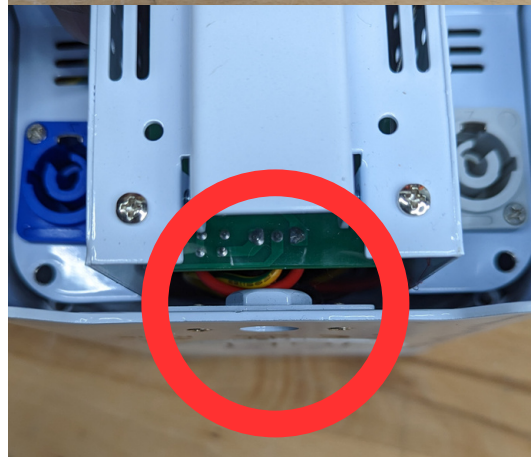
## Step 1

- Locate the 4 screws on the bottom of your light (**Refer to the image to your right**)



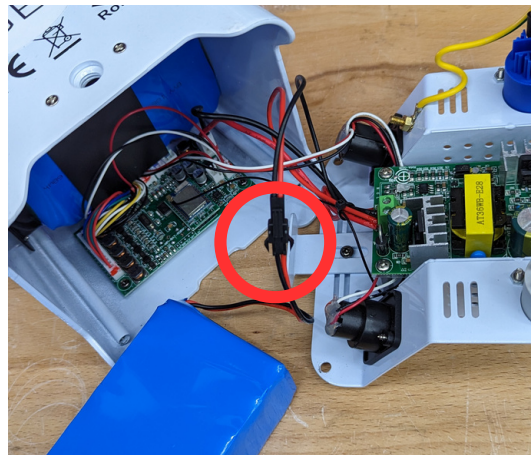
## Step 2

- Start to lift your bottom at a 30-degree angle to avoid damaging the power board (**Refer to the image to your right**)
- Unscrew the 4 screws and place them in a safe area



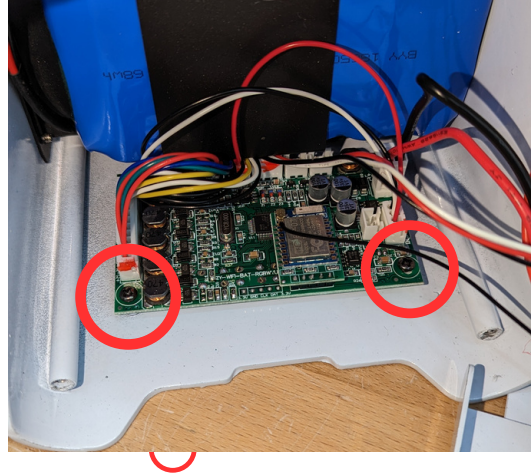
## Step 3

- Disconnect your bad battery to avoid injuries (**Refer to the image to your right**)



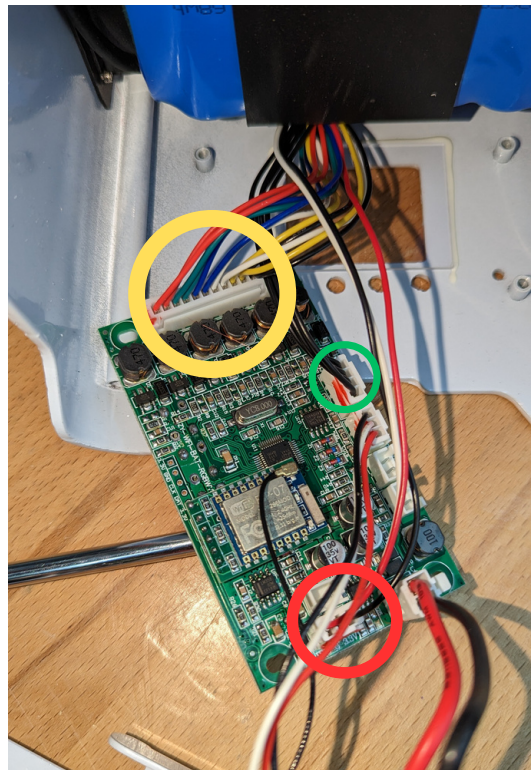
## Step 4

- Locate the 2 screws on the bottom of your mainboard (**Refer to the image to your right**)
- Unscrew the 2 screws and place them in a safe area, **this is where the small screwdriver and the magnetic rod are your friend**



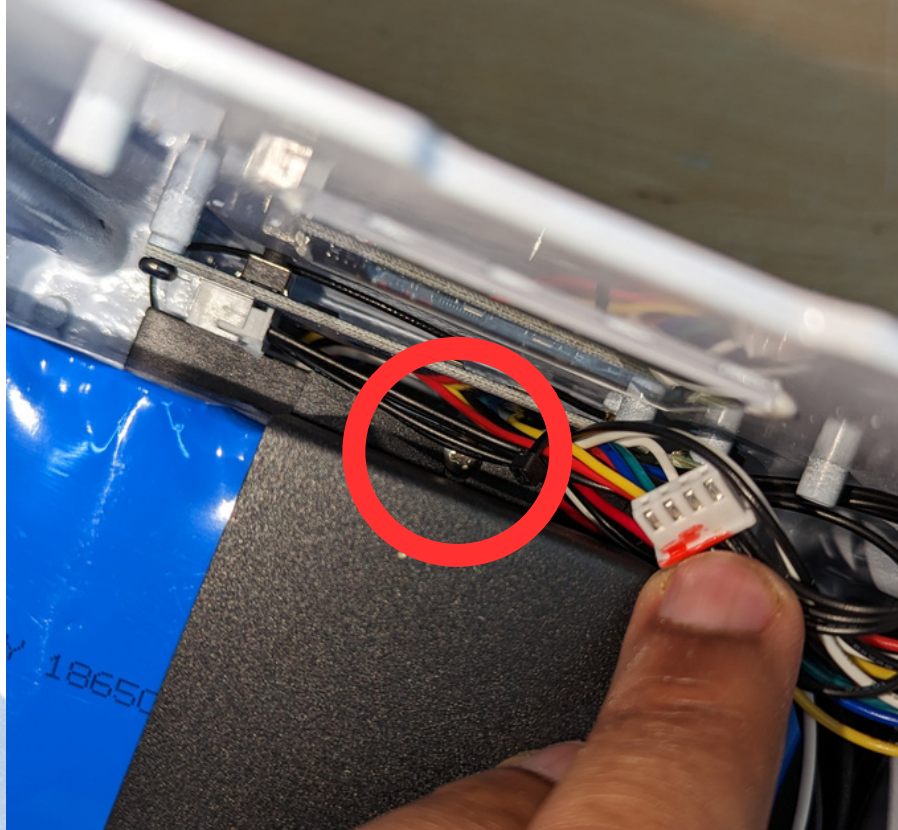
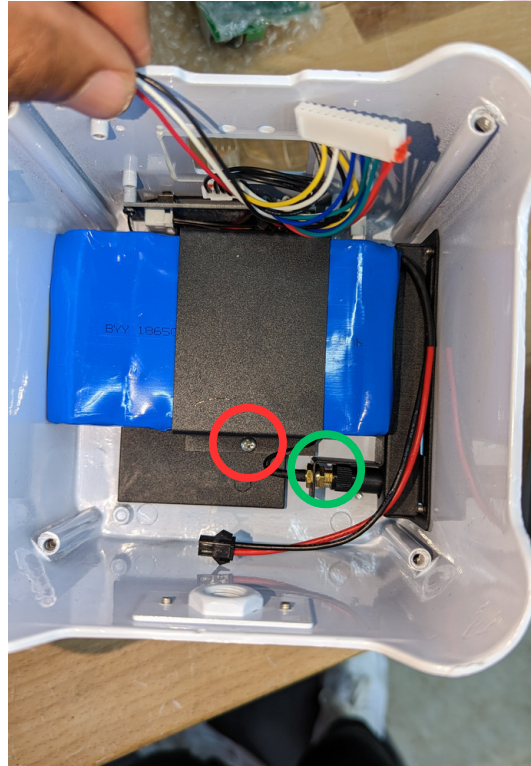
## Step 5

- This step is **optional** you can do it without removing cables just flip the main board over the edge
- Tilt the top of the mainboard and pull out (**Refer to the image to your right**)
- Remove the colored connection from the main board (**Refer to the image to your right**) to make taking out the battery an easier process
- If you have some red adhesive holding your connection try to shake the cord in the port from left to right as you are pulling it out. If that doesn't work use a flat-head screwdriver to pop out of the connection. Be gentle when doing this as you could damage the main board.



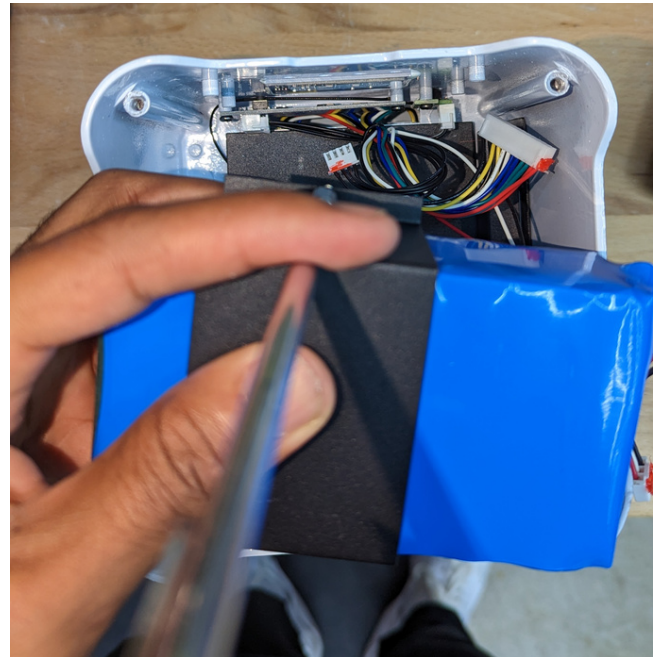
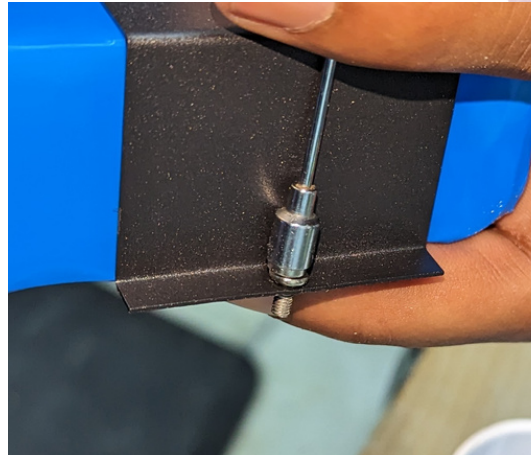
## Step 6

- Locate the two screws (Refer to the image to your right and the Image at the bottom)
- Unscrew the 2 screws and place them in a safe area
- Once the screws are out, proceed to remove the battery, you may have to slide the battery closer to the antenna to remove it (circled in green)



## Step 7

- Once the battery is out, swap it out for the new battery and put the harness back on
- Start to place the battery back inside the lighting housing unit ( **you may need to apply a little pressure**)
- **PRO TIP: Place your screw in the hole for the battery harness followed by the magnetic rod before trying to put your battery back in. Use the magnetic rod to apply pressure to the screw as you work the battery back into its housing on the side with cables and mainboard. (Refer to the images to your right)**



## Step 8

- Back track the instructions to place light back together and test