

## 12V AUTOMATIC BRAKE BLEEDER - 6 BAR

 **343001V2**



## IMPORTANT - PLEASE READ THOSE INSTRUCTIONS CAREFULLY

### 1. SAFETY MEASURES

## NOT SUITABLE FOR USE WITH MINERAL OIL

- Only use the brake bleeder for its intended purpose.
- For safety and best performance, keep the brake bleeder clean and tidy.
- DO NOT use the brake bleeder for any other purpose other than the intended one. The 343001V2 must ONLY be used for bleeding brake circuits or hydraulic clutches.
- DO NOT leave the brake bleeder unattended when switched on.
- ONLY SUITABLE FOR DOT 3/4/5.1

### 2. TECHNICAL FEATURES

- Compatible with ABS systems
- Allows one man operation for brake and clutch bleeding
- Compatible DOT3, DOT4 and DOT5
- 12v powering with reverse polarity warning
- Stainless steel body
- New pump with automatic power off valve
- Auto power OFF when min level
- Large reservoir opening for easy cleaning
- 12V power cable with jack (L: 4m)
- Fluid cable for brake fluid with quick coupling system (L: 4m)
- Includes fluid collection bottle and European screw-on reservoir cap

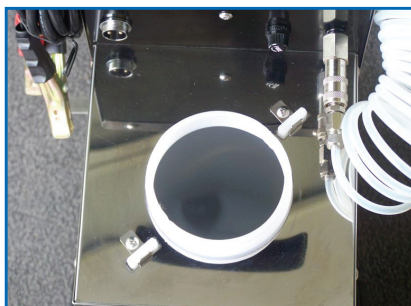
### 3. CONTROL PANEL



## 4. INSTALLING & USE

### Use

1. Fill the reservoir with new brake fluid. Do NOT fill the reservoir over 80% as this may cause overflow.
2. Connect 12V cable to the electrical connector on the unit and connect red clamp to the battery positive pole and black clamp to the negative pole.
3. Plug fluid tube on the bleeder quick connector.
4. Purge the air from the device lines
  - a. Attach master-cylinder cap to the quick connector
  - b. Push "ON" or "1" switch
  - c. When the fluid reaches the plug, push "OFF" or "0"



3. Attach the plug to the reservoir
4. Check that the pressure regulator is at its minimum by PULLING UP the regulator and TURNING it to the left to its maximum
5. Check that the "bypass" lever is turned to the ON position
6. Switch on the device by pressing "1" or ON
7. Move the "bypass" lever to the OFF position
8. Adjust the pressure regulator according to the manufacturer's instructions. Turning to the right increases pressure and turning to the left decreases pressure
9. Attach the drained fluid container to the brake caliper purge screw. Loosen the nut
10. The brake purge will start
11. Retighten the nut when new brake fluid reaches the container
12. Press "OFF" or "0"
13. Move the « bypass » lever to « ON » to release the pressure
14. Disconnect the lines
15. Check that the fluid level in the reservoir is correct



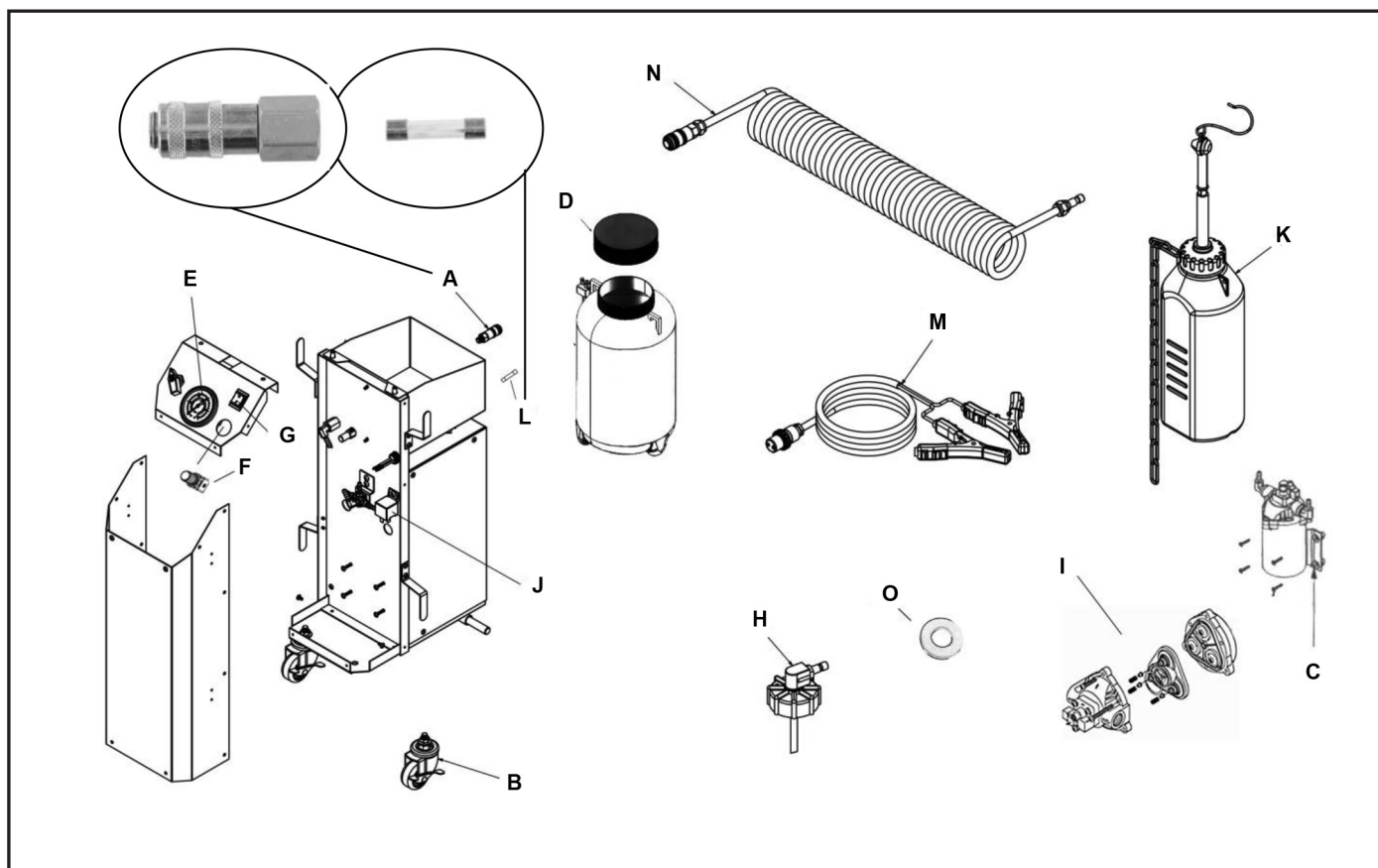
## 5. CE CERTIFICATION

This device complies to the following below:

EN55014-1 : 2006

EN55014-2: 1997+A1

## SPARE PARTS



Ref No	Part No	Description
A	343001-04	Female Quick Connector
B	343001-06	Spinning Wheel - 5cm with Brake
C	343001V2-10	Pump
D	343001-34	Upper Container Cap
E	343001-26	Pressure Gauge
F	343001V2-03	Pressure Regulator
G	343001-29	Switch
H	34301400	Master Cylinder Cap
I	343001-11	Pump Head
J	343001-18	Relay
K	343001-33	Refill Reservoir
L	343001-32	15 Amp Fuse
M	343001-08	Power Cables
N	343001-09	Fluid Hose with Connectors
O	343001-51	O-Ring for Master Cylinder Cap