

18732000 - Fiesta & Focus Master Bush Kit including Press Frame & Pressure Screw



Item	Part Number	Description
1	18700170	Press Frame
2	087580-05	Force Screw
3	18780400	Adaptor Ring
4	187321-01	Fiesta Adaptor
5	187321-02	Fiesta Adaptor
6	187321-03	Fiesta Adaptor
7	187322-01	Focus Adaptor
8	187322-02	Focus Adaptor
9	187322-03	Focus Adaptor

IMPORTANT NOTES

1. Ensure that the drive screw is kept well lubricated
2. DO NOT use impact tools
3. Always follow manufacturers latest instructions
4. Use personal protection equipment
5. Ensure vehicle is securely supported
6. Ensure the bush is replaced in the correct position (alignment) by marking the bushes location



FIG. 1

FIESTA TRAILING ARM BUSH INSTALLER & REMOVER

APPLICATIONS:

- Fiesta '95-'02 - KA '96-'08 - Puma '96-'02

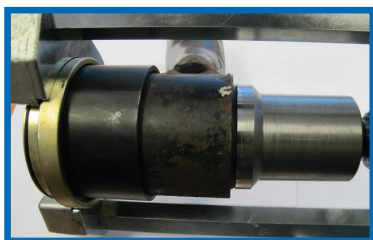
Removal of Old Bush

Ensure bush position is marked as per Fig. 1 above.

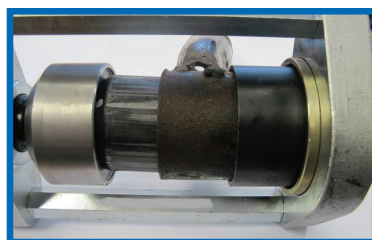
1. Assemble with 187321-02 placed in brass ring and 187321-01 placed on drive screw.
2. Apply the screw pressure keeping all parts in line.
3. Gradually apply pressure via the screw until the old bush is removed.

Installation of New Bush

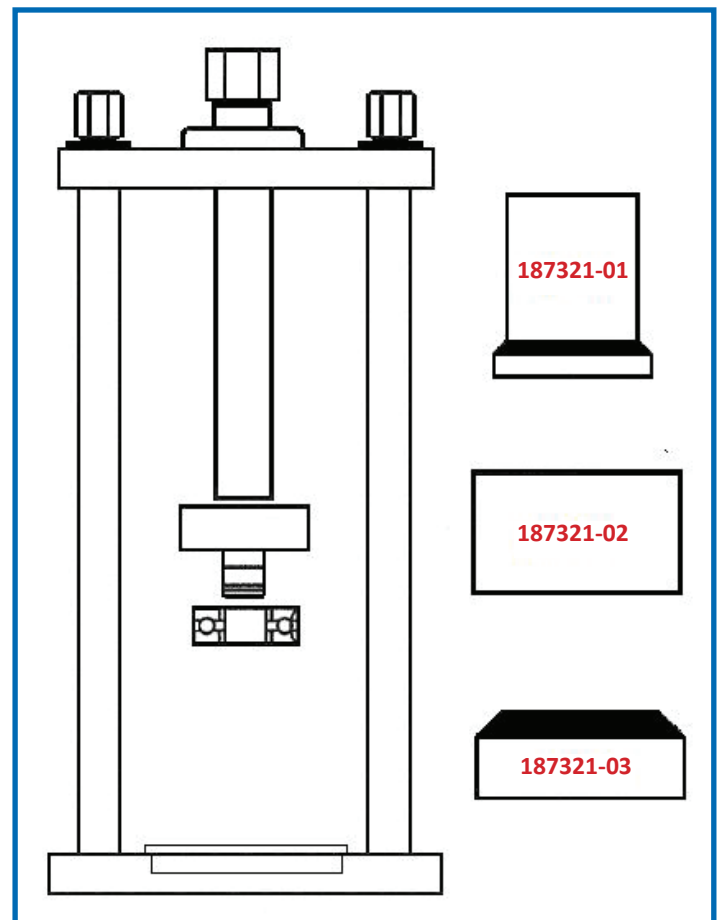
1. Clean the arm / surrounding area and mark the new bush for alignment.
2. Lubricate the bush to aid installation.
3. Assemble with 187321-02 placed in brass ring and 187321-03 placed on drive screw.
4. Apply the screw pressure keeping all parts in line.
5. Gradually apply pressure via the screw until the new bush is installed.



Removal using 187321-01
& 187321-02



Installation using 187321-02
& 187321-03



FOCUS TRAILING ARM BUSH INSTALLER & REMOVER

APPLICATIONS:

- C-MAX '07- MPV
- MKI '98-'04 Estate, Hatchback, Saloon, Van
- MKII '04- Convertible, Hatchback, Saloon, Van
- Kuga '08- Off Road
- Mazda 3 (BK) '03-'09 Saloon, Hatchback
- Mazda 5 (CR/CW) '05- MPV
- Volvo C30 '06- Hatchback
- Volvo C70 II '07- Cabrio
- Volvo S40 II '04-'12 Saloon
- Volvo V50 '04-'12 Estate

Removal of Old Bush

Ensure bush position is marked as per Fig. 1 on page 1.

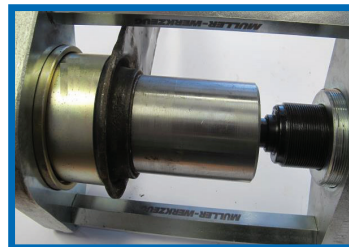
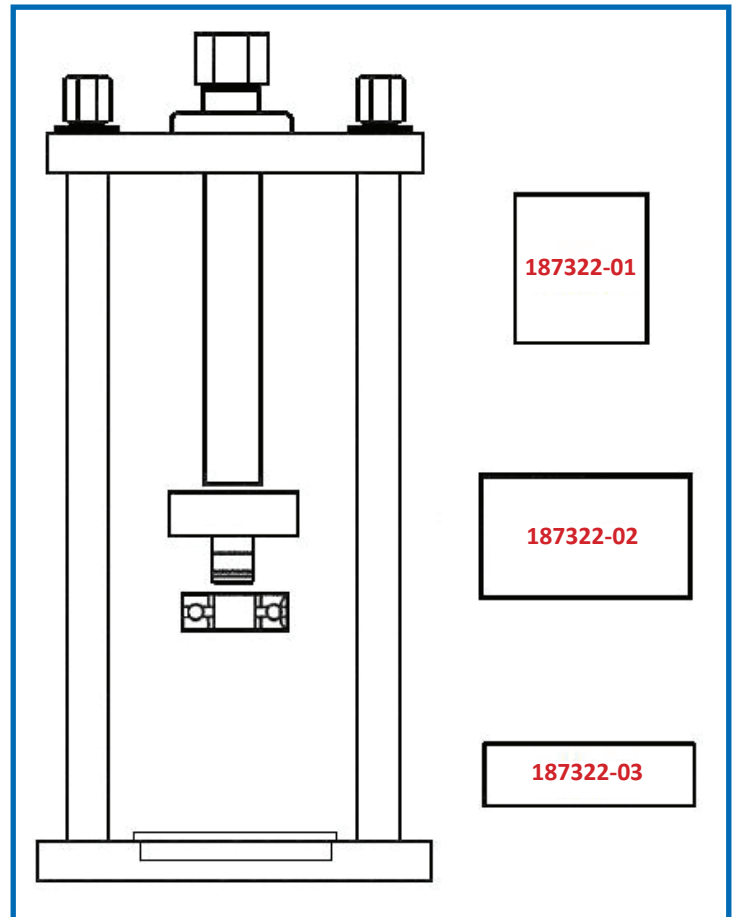
1. Assemble with 187322-02 placed in brass ring and 187322-01 placed on drive screw.
2. Apply the screw pressure keeping all parts in line.
3. Gradually apply pressure via the screw until the old bush is removed.

Installation of New Bush

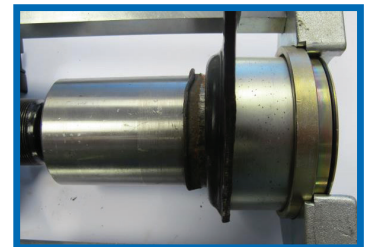
1. Clean the arm / surrounding area and mark new bush for alignment.
2. Lubricate the bush to aid installation.

Note: The new bush can only be installed into the arm from the opposite direction to which the old bush was removed.

3. The Frame Assembly will need to be rotated and re-mounted onto the arm.
4. Assemble with 187322-03 placed in adaptor ring and 187322-01 placed on drive screw.
5. Apply the screw pressure keeping all parts in line.
6. Gradually apply pressure via the screw until the new bush is installed.



Removal using 187322-01 & 187322-02



Installation using 187322-01 & 187322-03

Other Available Options

Adaptors in the following kits can be used in a press frame with either a 18704100 pressure screw (recommended) or a hydraulic ram

Part No.	Description
18732500	Kit includes Adaptor Set for Fiesta & Focus Bushes, 18780400 Adaptor Ring and 18704100 Pressure Screw
18732100*	Adaptor Set for Fiesta Trailing Arm Bushes
18732200*	Adaptor Set for Focus Trailing Arm Bushes

*Note - Adaptor Ring 18780400 required