

hegen

Hegen PCTO™ Straw Cup PPSU

Instructions for Use

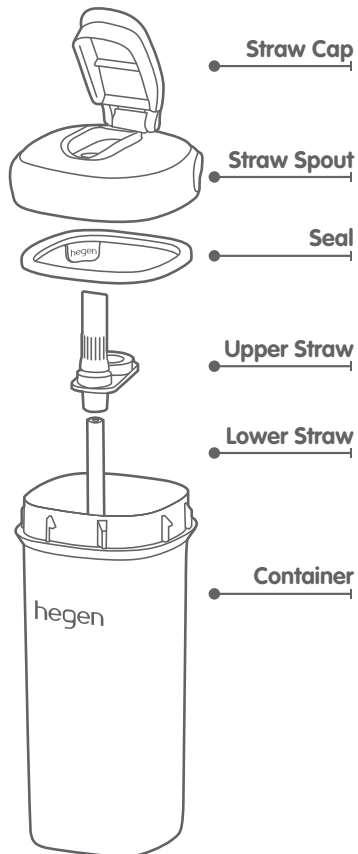
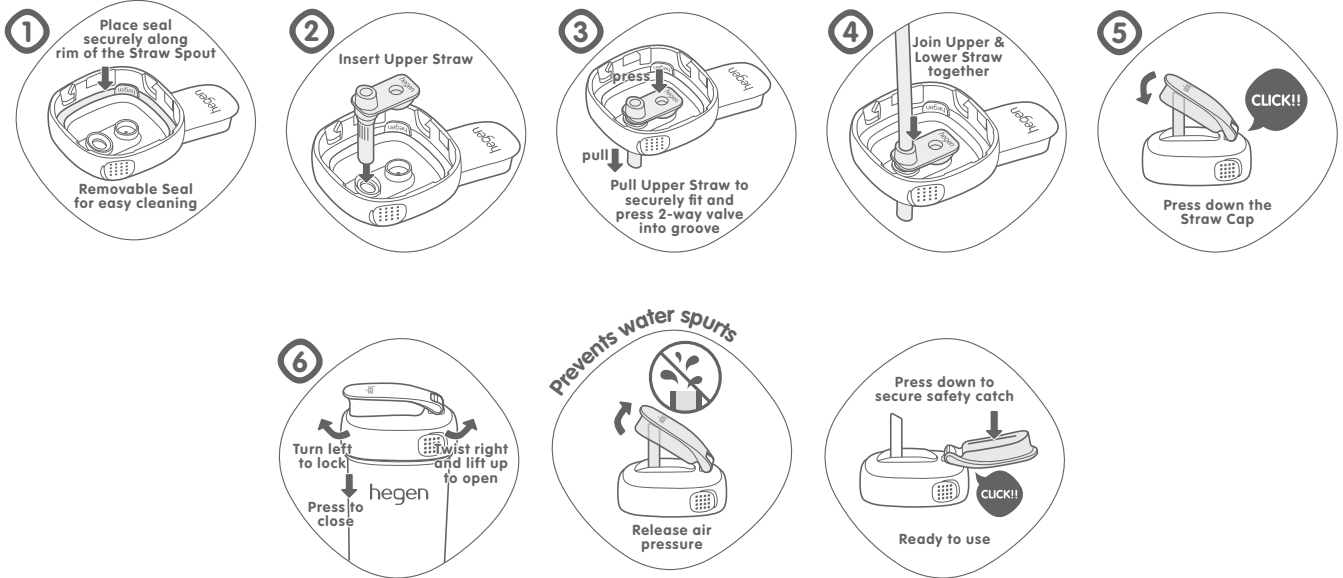


**BPA
BPS
FREE**

Phthalate-Free
and PVC-Free

Inspect all items before each use. Throw away at the first sign of damage or weakness. The bottle and accompanying parts may blur after repeat use, wash, warming and sterilising. **For safety and hygiene reasons, we recommend replacing components every 6 months.**

For more information on our products, please visit www.hegen.com.



Part	Material	Heat Resistance
Straw Cap / Straw Spout	Polypropylene (PP)	-20°C to 110°C
Straw / Seal	Silicone	
Container	Polyphenylsulfone (PPSU)	-20°C to 180°C

For your child's safety and health WARNING!

Straws are not suitable for a child under 6 months • Always use this product with adult supervision • Continuous and prolonged sucking of fluids will cause tooth decay • Always check food temperature before feeding • Keep all components not in use out of the reach of children • Before first use, clean the product • Inspect before each use. Throw away at the first signs of damage or weakness • Before first use, place in boiling water for 5 minutes. This is to ensure hygiene • Clean before each use • Dishwasher safe (top rack only). Food colouring, milk or oil residue that undergo heating processes may stain or discolour parts permanently • Do not warm contents in a microwave as this may cause uneven heating and could scald when drinking • Do not use in a heated oven or microwave. Always stir heated contents to ensure even heat distribution and test the temperature before serving • This is not a toy • Do not allow child to play with small parts or walk/run while using bottles or cups • Never attach to cords, ribbons, laces or loose parts of clothing. The child may be strangled • Do not use abrasive cleaning agents or solvents as these may cause damage • Do not place components directly on surfaces that have been cleaned with anti-bacterial cleaners • Plastic materials may be affected by high temperatures and sterilising. This can affect the fitting and aesthetics of the product • Proper assembly is necessary to ensure a leak-free experience.

Cleaning:

Always wash your hands with soap before cleaning, sterilising and feeding • Before first use, disassemble all parts, wash with bottle detergent and rinse in clean water thoroughly before sterilising. This is to ensure hygiene. Always take all components apart and wash the product with bottle detergent immediately after each use. • Always clean before and after each use • When using a dishwasher (top rack only), avoid high-heat settings like "sanitary clean" or "heat boost" which may distort components • Do not use chemically aggressive or abrasive cleaning agents, solvents or anti-bacterial cleaners as these can damage the product • Cleaning the product with a wired bottle brush may cause scratches • Remember to clean all sides as well as the base and covers of the bottles • Clean the insides of the straw with any standard straw brush. • Do not clean 2-way valve with straw brush or any other cleaning tool. Gently rub valve in warm water with your fingers to clean it.

Sterilising:

Suitable for sterilising by steam (electric), boiling water or cold water tablet/liquid solution. Should you choose to sterilise with an electric steam steriliser, the sterilising instructions of the sterilisation devices should be carefully observed • For boiling: Bring the water to boil, then submerge components in boiling water for no more than 3 minutes • Prior to sterilisation, all components should be completely taken apart to avoid different reactions of materials which can cause deformation • All grease or oil residue should be thoroughly removed before sterilising to avoid permanent staining of parts • Chemical sterilisation or the use of hand cream and/or sun cream may cause the print to fade.

Assembly:

Proper assembly is required to ensure a leak-free experience. 1) Ensure **Straw Spout** is assembled with the **Removable Seal** (Hegen logo facing outwards) to ensure air tight storage. 2) Insert **Upper Straw** from the internal side of the **Straw Spout**. 3) Pull up straw and press 2-way valve into the groove to secure. 4) Join **Upper Straw** and **Lower Straw** together. 5) To close, press down the **Straw Cap** until you hear a click. 6) **Press-to-Close** the **Straw Spout** and turn clockwise to lock. **Twist-to-Open** the **Straw Spout** in an anti-clockwise direction.

Usage:

Do not fill bottle exceeding the maximum indicated volume line • Do not fully tilt bottle while drinking to avoid choking or spillage • **Do not fill with hot liquids** or warm contents in a microwave as this may cause uneven heating and could scald when drinking • A built-in 2-way valve in the **Upper Straw** allows for air to be released to balance internal and external air pressure • To drink, flip open the **Straw Cap**. A two-step safety catch on the **Straw Spout** prevents the **Straw Cap** from completely opening and allows for the slow release of air pressure, thus preventing sudden spurts of water • 1st safety catch: The bent silicone **Upper Straw** will be lodged under the **Straw Cap** • 2nd safety catch: The silicone **Upper Straw** will straighten and **Straw Cap** will fully open and remains locked in place.

Caution:

Not suitable for use with hot (>40°C) or carbonated beverages • Hot (>40°C) or carbonated drinks may cause leakage at the tip of the straw due to the build up of air pressure • To prevent leaks or spills, ensure that the straw cup remains upright and avoid inverting or dropping the straw cup during use • Please note that drastic changes in the air pressure or ambient temperature may cause leakage as well.

Copyright © Hegen

Hegen retains all intellectual property rights to this product and packaging. Including all designs, graphic images and text.

Any reproduction of materials is strictly prohibited and constitutes infringement.

All Rights Reserved.

Patent Pending

Hegen Pte Ltd

438A Alexandra Road

Block A Alexandra Technopark

Unit #02-01 Singapore 119967

EN14350



Art 418