

# hegen

Make Every Drop Count



**Electric Breast Pump (SoftSquad™)  
Instructions for Use**

# Introduction

Thank you for purchasing the Hegen Electric Breast Pump. Your journey with Hegen is the first step to nurturing your baby. We hope that you and your baby will enjoy the Hegen experience.

The Hegen Electric Breast Pump is a powered breast pump to be used by lactating women. It can be used as both a single or double pump to express and store breast milk directly into any Hegen PCTO™ containers minimising the transfer of precious milk. Our pump is designed for comfort and efficiency and offers the following unique features to make every drop count:

- Single and/or Double Pump
- Automatic Massage Stimulation
- 12 Suction Levels & 3 Expression Modes
- Patent Pending Kneading Massage Feature
- Optimized USB Charging
- Lightweight, Compact and Efficient
- Seamless Express-Store-Feed transition
- Built-in Rechargeable Battery

For more information on our products, please visit [www.hegen.com](http://www.hegen.com)

# Contents

1. Important Safeguards
2. Intended Use
3. When To Express Milk
4. Product Description
5. Cleaning
6. Sterilising
7. Assembly
8. Charging
9. Pumping
10. Kneading Ring
11. Storing Milk
12. Preparing Milk
13. Feeding Your Baby
14. Troubleshooting
15. Accessories & Replacement Parts
16. Limited Warranty
17. Technical Specification
18. Environmental To Use
19. Disposal
20. Other Languages

# 1. Important Safeguards

**READ ALL INSTRUCTIONS BEFORE USING AND SAVE IT FOR FUTURE REFERENCE**

## **WARNING:**

- This product is intended for repeated use by a single user and should not be shared between users.
- Do not use while you are pregnant, as pumping can induce labour.
- Do not drive while pumping.
- Before first use, clean and sterilise all components thoroughly except **Breast Pump Device** and all other electrical components. Place the components in boiling water for 5 minutes. This is to ensure hygiene.
- This is NOT a toy. Keep all components not in use out of reach of children.
- Do not continue pumping for more than 5 minutes if you do not succeed in expressing any milk.
- If the pressure generated is uncomfortable or cause pain, break the seal between the breast and the **Flange (SoftSground™)** with your finger and remove the pump from your breast.
- Do not use the product if it does not work properly.
- Do not expose the product to extreme heat and do not place it in direct sunlight.
- Do not place components directly on surfaces that have been cleaned with anti-bacterial cleaners.
- This appliance is not intended for use by persons (including children) with reduced physical, sensory or mental capabilities, or lack of experience and knowledge, unless they have been given supervision or instruction concerning use of the appliance by a person responsible for their safety.
- Children should be supervised to ensure that they do not play with the appliance.
- Only use the power adapter supplied with the Hegen Electric Breast Pump.

**DANGER:**

- Do not leave the **Breast Pump Device** unattended when plugged in.
- Always unplug after charging, and never leave the device for overnight charging.
- Keep the **Breast Pump Device** and all other electrical components dry.
- Do not immerse or run water over the device.
- Do not attempt to repair or modify the device by yourself.
- Use with the appropriate **Power Adapter** and/or **Battery** supplied with the **Breast Pump Device**.

**IMPORTANT:**

- Plastic components and containers become brittle when frozen and may break when dropped.
- Pump components and containers may become damaged if mishandled, e.g. dropped, knocked over, scratched.
- Take appropriate care in handling all components of the product.
- Do not use the breast milk if pump components or containers become damaged.
- Do not use or charge **Breast Pump Device** below 5°C or above 40°C.

## **2. Intended Use**

For lactating women to express and store milk from their breasts to complement breastfeeding.

## **3. When To Express Milk**

It is best to wait until your breastfeeding schedule and milk supply is established (usually at least 2 - 4 weeks) before expressing breast milk, unless otherwise advised by your healthcare professional.

## 4. Product Description

### Breast Pump Kit



2 x eCap  
(SoftSground™)



2 x eDiaphragm  
(SoftSground™)



2 x Flange  
(SoftSground™)



2 x Pump Body  
(SoftSground™)



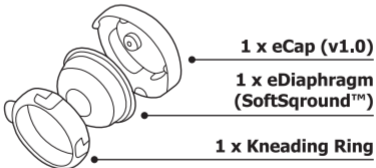
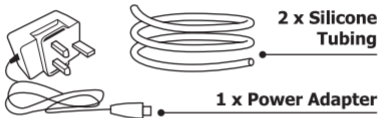
2 x Seal



2 x Valve

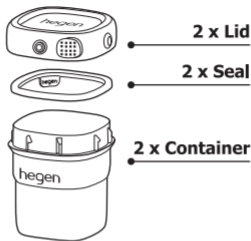
## Product Description

### Breast Pump Kit

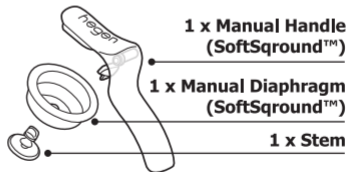




## Product Description



### Manual Pump Converter Kit

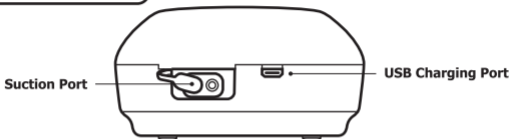


# Product Description

Part	Material	Heat Resistance
eCap (SoftSground™) / eCap (v1.0) / Pump Body (SoftSground™) / Kneading Ring / Manual Handle (SoftSground™) / Stem / Lid	Polypropylene (PP)	-20°C to 110°C
Flange (SoftSground™) / eDiaphragm (SoftSground™) / Seal / Valve / Silicone Tubing / Manual Diaphragm (SoftSground™)	Silicone	
Container	Polyphenylsulfone (PPSU)	-20°C to 180°C

# Product Description

## Breast Pump Device



### DISPLAY ICONS

- TIMER
- MESSAGE MODE
- BATTERY STATUS
- EXPRESSION PACE
- SUCTION LEVEL [ 1-12 ]



### CONTROL BUTTONS

- INCREASE SUCTION LEVEL
- DECREASE SUCTION LEVEL
- SELECT EXPRESSION PACE
- ON / OFF [ PRESS & HOLD ]
- TURN ON BACKLIT [ PRESS ONCE ]
- SWITCH TO MESSAGE MODE [ PRESS TWICE ]

## 5. Cleaning

Note: Always wash your hands with soap before cleaning, sterilising and using the product.

Before first use, disassemble all components of the product, wash with bottle detergent and rinse in clean water thoroughly before sterilising except **Silicone Tubing, Breast Pump Device** and all other electrical components. This is to ensure hygiene. Always take all components apart except the **Breast Pump Device** and all other electrical components and wash the product with bottle detergent immediately after each use. Take extra care when removing and cleaning the **Valve** not to lose or damage it. Gently pull to remove the **Valve** and rub clean with fingers in warm water with mild bottle detergent. Do not use a teat brush or any other implement to clean it. When using a dishwasher (top rack only), avoid high-heat settings like "sanitary clean" or "heat boost" which may distort components. Use a clean and damp cloth to wipe **Breast Pump Device** and **Silicone Tubing** if required. Ensure the device is turned off and not charging.

## 6. Sterilising

Sterilise all components except the **Silicone Tubing, Manual Handle (SoftSground™), Breast Pump Device** and all other electrical components in a UV steriliser, steam steriliser or boiling water. Should you choose to sterilise using a UV steriliser or an electric steam steriliser, the sterilising instructions of the sterilisation devices should be carefully observed. In addition, all components should be removed from the UV steriliser after sterilisation to prevent excessive exposure to UV light. For boiling: Bring the water to boil, submerge components in boiling water for no more than 5 minutes. For sterilisation, all components should be completely taken apart to avoid different reaction of materials which can cause deformation. All grease or oil residue should be thoroughly removed before sterilising to avoid permanent staining of parts.



### **CAUTION!**

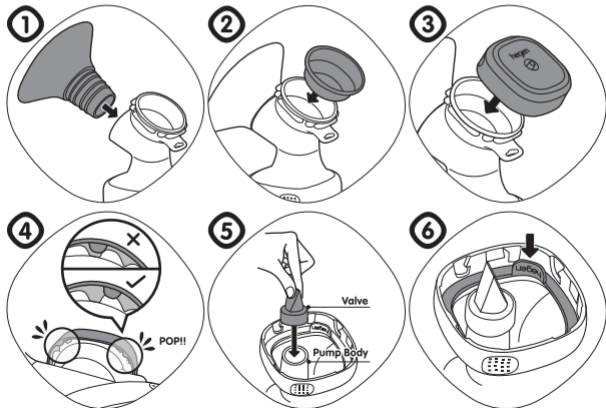
NEVER immerse or run water over **Breast Pump Device**. It is not a waterproof device.

## 7. Assembly

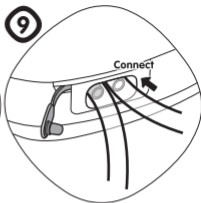
### Note:

Inspect before each use for cracks, tears or warping. Throw away at first sign of damage or weakness. Proper assembly is required to ensure an optimal performance.

### For Electric Breast Pump



# Assembly



- Step 1: Insert the **Flange (SoftSquad™)** into the **Pump Body (SoftSquad™)** fully and ensure that it is fitted snugly.
- Step 2: Place the **eDiaphragm (SoftSquad™)** into the **Pump Body (SoftSquad™)** and press down firmly around the entire rim to ensure that it is sealed properly.
- Step 3: Hold the **eCap (SoftSquad™)** and **Press-to-Close** onto the **Pump Body (SoftSquad™)** over the **eDiaphragm (SoftSquad™)**. **Twist-to-Open** in anti-clockwise direction.
- Step 4: Ensure the four catches of the **eCap (SoftSquad™)** are securely locked with the **Pump Body (SoftSquad™)**.
- Step 5: Hold onto the flat surface of the **Valve** to prevent **Valve** slit from misalignment. Insert **Valve** into **Pump Body (SoftSquad™)** from underneath. Push in the **Valve** as far as possible.
- Step 6: Ensure **Pump Body (SoftSquad™)** is assembled with removable **Seal** (Hegen logo facing outwards).

# Assembly

Step 7: Hold the assembled **Electric Breast Pump Module** and **Press-to-Close** onto the **Breast Milk Storage Container**. To tighten, turn in clockwise direction. **Twist-to-Open** in anti-clockwise direction.

Step 8: For single pumping, connect one end of the **Silicone Tubing** to the **eCap (SoftSground™)** and the other end to the **Suction Port** of the **Breast Pump Device**.



## CAUTION!

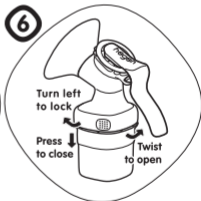
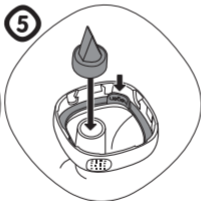
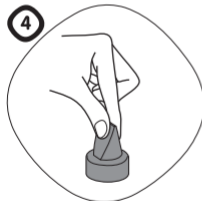
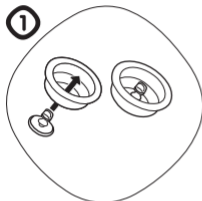
Ensure that the unused **Suction Port** of the **Breast Pump Device** is tightly capped when doing single pumping.

Step 9: For double pumping, simply unplug the cap of the unused **Suction Port** and connect the end of the second **Silicone Tubing** to the **Suction Port**.



# Assembly

## Convert to Manual Breast Pump



# Assembly

- Step 1: Ensure the **Stem** is properly fitted into the hole on the **Manual Diaphragm (SoftSground™)**.
- Step 2: Place the **Manual Diaphragm (SoftSground™)** into the **Pump Body (SoftSground™)** and press down firmly around the entire rim to ensure that it is sealed properly.
- Step 3: Engage the **Stem** with the **Manual Handle (SoftSground™)** and then pin the Pivot into the opening on side of **Pump Body (SoftSground™)** until a click is felt.
- Step 4: Hold onto the flat surface of the **Valve** to prevent **Valve** slit from misalignment and insert **Valve** into **Pump Body (SoftSground™)** from underneath. Push in the **Valve** as far as possible.
- Step 5: Ensure **Pump Body (SoftSground™)** is assembled with removable **Seal** (Hegen logo facing outwards).
- Step 6: Hold the assembled **Manual Breast Pump Module** and **Press-to-Close** onto the **Breast Milk Storage Container**. To tighten, turn in clockwise direction. **Twist-to-Open** in anti-clockwise direction.



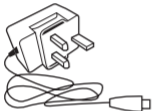
## CAUTION!

While in use, do not attempt to remove the container with breast milk or any liquids to avoid spillage. Always place the **Breast Milk Storage Container** onto a flat surface, hold it firmly with one hand and gently **Twist-to-Open** in anti-clockwise direction to remove it from the **Pump Body (SoftSground™)**.

## 8. Charging

**Hegen Electric Breast Pump** offers flexibility and convenience of three methods of charging – Micro USB AC Power Supply Adapter, Micro USB Cable, USB Power Bank.

### Included in the box



#### **Micro USB AC Power Supply Adapter**

5V Micro-B USB AC Power Supply Adapter. Plug the adapter into a power socket and plug the Micro-B USB into the **USB Charging Port** on the **Breast Pump Device** to charge.

(Charge time: Approximately 2.5 hrs)

### SAFETY GUIDELINES

- Do not exceed charging capacity of battery. Ensure charging device does not exceed 1.5A as this may cause the battery to overheat.
- Warning for PC/Laptop charging – Do not charge pump unit along with other USB connected devices. Always charge the **Breast Pump Device** on its own to avoid excessive electrical drain on PC/Laptop.
- To avoid low battery while pumping, always keep **Breast Pump Device** charged.
- Do not expose the product to extreme heat and do not place it in direct sunlight.

# Charging

## Alternative Charging Methods

### Micro USB Cable

The **Breast Pump Device** can accept most 5V USB micro-B input (max. 1.5A) connections. Charge the **Breast Pump Device** with alternative USB cables (USB A to USB micro-B)



- USB 1.0 & 2.0 – 500mA Max. (Charge Time: 4 hrs)
- USB 3.0 & 3.1 – 900mA Max. (Charge Time: 2.5 hrs)
- USB Power Supply Adapter from 1A to 1.5A (Charge Time: 2 hrs)

### USB Power Bank

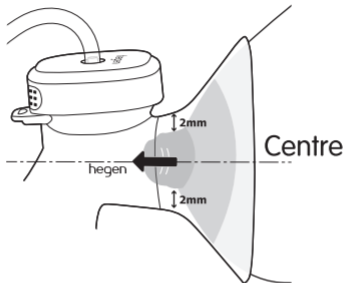
Most power banks can be used to charge the **Breast Pump Device** using the correct input connector. Power banks are used for temporary charging or secondary power operation and not advised for overnight charging.



- Do not charge if power bank is low on battery.
- Do not charge if power bank is overheated.

Note : The built-in lithium-ion battery has a charge-discharge cycle life of about 300 times, after which its capacity may fall below 80%. To prolong the usage of the **Breast Pump Device** battery, proper care and regular charging is recommended. We do not recommend using the **Breast Pump Device** until it runs out of battery all the time. Repeatedly allowing the battery to drain fully may shorten its lifespan and decrease its performance. Do not leave the battery to charge overnight or connected to the power adapter when the battery is completely charged as it will lower the battery life if done repeatedly. Keep the battery at a cool area.

## 9. Pumping



### CAUTION!






Always wash your hands with soap before touching the breast and pump components. Contact your healthcare professional or breastfeeding specialist if you can express only minimal or no milk or if expression is painful. Do not continue pumping for more than 5 minutes if you do not succeed in expressing any milk. If the pressure generated is uncomfortable or cause pain, break the seal between the breast and the **Flange (SoftSground™)** with your finger and remove the pump from your breast.

# Pumping

TIP

A good nipple fit of the **Flange (SoftSground™)** will provide a more comfortable and effective pumping experience. Use the nipple measurement guide below to find the most suitable flange size.

Note : The **Hegen Double Electric Breast Pump (SoftSground™)** gift set comes with 2 x **Flange (SoftSground™)** 22mm that fit up to 18mm nipple size. Other flange sizes sold separately.

19mm Fits up to 15mm	22mm Fits up to 18mm	25mm Fits up to 21mm	28mm Fits up to 24mm	31mm Fits up to 27mm
				

\*other sizes sold separately



Find our nipple measurement guide here

# Pumping

## Double Electric Breast Pump

**TIP**

Sit and relax on a comfortable chair. Cushions may be helpful to support your back. If backflow occurs, ensure nipple is correctly positioned in the center or lower.

Step 1: Centre the assembled **Electric Breast Pump Module** over nipple and hold it firmly on your breast for a proper seal. Caution: Pressing **Flange (SoftSground™)** too firmly into breast may upset milk flow.

Step 2: Press & Hold (U) button to switch on the **Breast Pump Device**. It will begin Massage (M) mode for 2 minutes to simulate the “let-down” reflex and stimulate milk flow. M will be displayed on the screen.


Step 3: After 2 minutes, Massage mode will automatically switch to Expression mode. Suction level is set at 3 by default and subsequently at last setting level after use. Suction level ranges from **1 to 12** and will be displayed on the screen.

**TIP**

If you experience “let-down” (breast milk starts to flow) earlier than 2 minutes, press button **+** or **-** to progress to Expression mode.

Step 4: Once in the Expression mode, get your optimal and comfortable expression suction level by pressing **+** button to increase, or **-** button to decrease the suction strength. You decide the pumping comfort that is best for you.

# Pumping

Step 5: Press  button to select your preferred expression pace, a special feature to enhance your pumping experience.



  
**Slow**  
rhythm

  
**Medium**  
rhythm

  
**Fast**  
rhythm

Step 6: Once expression is completed, Press & Hold  button to turn off the **Breast Pump Device**.

**TIP**

Press  button once to re-light the display screen. If you like to switch back and forth between Massage **M** stimulation and Expression Mode to get second "let-down" reflex, press  button twice.

**!**

## **CAUTION!**

Recommended maximum suction level for Single Pumping is up to Level 9 only! For Double Pumping, maximum suction level is Level 12 subject to your personal comfort.



# Pumping

## Converting to Manual Breast Pump

Step 1: Centre the assembled **Manual Breast Pump Module** over nipple and hold it firmly on your breast for a proper seal. Caution : Pressing **Flange (SoftSground™)** too firmly into breast may upset milk flow.

Step 2: Begin pumping by gently pressing down the **Manual Handle (SoftSground™)** until suction is felt on your breast. Then allow the handle to resume to resting position.

Note : The level of vacuum is controlled by the pressure and the speed of the **Manual Handle (SoftSground™)** movement. You decide the pumping comfort that is best for you.

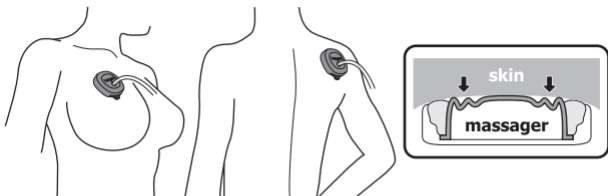
Step 3: Repeat Step 2 quickly to simulate the “let-down” reflex and stimulate milk flow.

Step 4: Once milk flow begins, apply a slower rhythm and longer stroke by pressing down the **Manual Handle (SoftSground™)** and keeping it pressed down for up to 3 seconds before release. This will help to maximise milk flow.

Step 5: When you finish pumping, gently remove the **Manual Breast Pump Module** from your breast.

**Note:** Always ensure expressed breast milk is not touching tip of **Valve** during pumping. Exceeding maximum level may cause leakage and affect pump performance. If you regularly express more than 150ml of breast milk per session, use Hegen PCTO™ 240ml/8oz Breast Milk Storage Container(s).

## 10. Kneading Ring



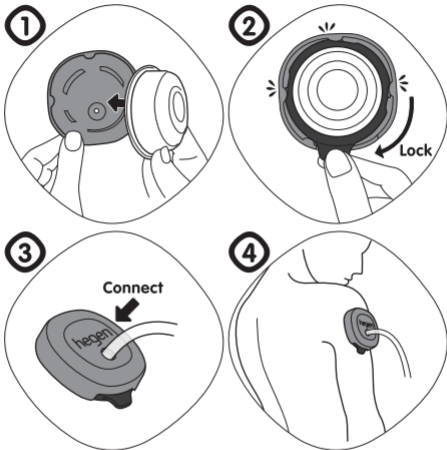
**Hegen Electric Breast Pump** has a unique and patent pending kneading massage feature that helps to calm and soothe tired muscles . The **Kneading Ring**, when attached to the **eCap (v1.0)** and **eDiaphragm (SoftSground™)**, converts into a massager that soothes tensed areas experienced by mothers through a gentle cupping and kneading sensation.

**TIP**

Being in a relaxed state encourages oxytocin production, which helps promote the let-down reflex and enables the release of breast milk. Scan the QR code for tips on how to apply kneading massage to key points around the breasts to help you relax before your pump session.



## Kneading Ring



\*compatible with eCap (v1.0) only

# Kneading Ring

Step 1: Place the **eDiaphragm (SoftSground™)** onto the **eCap (v1.0)** and ensure **eDiaphragm (SoftSground™)** contacts and seals completely to the **eCap (v1.0)** Surface.

Step 2: Slot the **Kneading Ring** into the assembled **eCap (v1.0)** and **eDiaphragm (SoftSground™)**. Turn clockwise to lock.

Step 3: Connect one end of the **Silicone Tubing** to the assembled **eCap (v1.0)/ eDiaphragm (SoftSground™)/ Kneading Ring** and the other end to the **Suction Port** of the **Breast Pump Device**. To start kneading massage mode, switch on the **Breast Pump Device**.

Step 4: Place assembled **eCap (v1.0)/ eDiaphragm (SoftSground™)/ Kneading Ring** on the surface of the skin where the silicone **eDiaphragm (SoftSground™)** is in full contact and well rested against the skin.

Note : Kneading massage feature will not work if placed on body parts such as the joint areas.

Set the **Breast Pump Device** to suction Level 3 expression mode. You should feel the **eCap (v1.0)/ eDiaphragm (SoftSground™)/ Kneading Ring** pull your skin gently, simulating a cupping and kneading sensation. Get your optimal and comfortable kneading massage level by pressing **+** button to increase, or **-** button to decrease the suction strength.

## SAFETY GUIDELINES

- Do not press and hold **Kneading Ring** on any one area longer than 5 minutes as it may leave a red mark.
- Keep the **Breast Pump Device** and all other electrical components dry.
- Do not immerse or run water over the device.
- Ensure all parts are cleaned and sterilised after each use.

## 11. Storing Milk

Gently **Twist-to-Open** in anti-clockwise direction to remove **Breast Milk Storage Container** from the **Pump Body (SoftSground™)**. Assemble a sterilised storage **Lid** onto the **Container** to seal. Refer to separate instructions provided with the storage containers.

Immediately after pumping is completed, place the filled **Breast Milk Storage Containers** in a cooler with ice pack. Transfer **Breast Milk Storage Containers** to the refrigerator or freezer once you are home. When freezing, do not fill **Container** more than printed maximum level to allow space for expansion. Label **Container** with date and time of pumping and always use the older breast milk first.

Note : Always refrigerate or freeze expressed milk immediately. Only store expressed milk with a sterilised storage container. Never refreeze thawed expressed milk or add fresh breast milk to frozen breast milk.

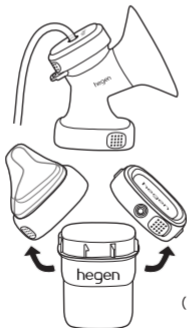
Location	Temperature	Duration
Room Temperature	25°C	4 hours
Refrigerator	4°C	48 hours
Separate Door Freezer	-5 to -15°C	3 to 6 months
Deep Freezer	-18 to -20°C	6 to 12 months

## 12. Preparing Milk

### CAUTION!

Do not thaw frozen breast milk in a microwave or in a pan of boiling water. Microwaving can cause uneven heating which lead to hot spots in the milk and could scald your baby. It may also destroy the nutrients in the milk.

Defrost frozen breast milk overnight in the refrigerator. Thawed milk is safe in the refrigerator for 24 hours. Place the sealed **Breast Milk Storage Container** in a bowl of hot water for at least 10 minutes to bring it to body temperature.



### Seamless Transition

(\*Collar, Teat & Transparent cover are not included)



## 13. Feeding Your Baby

Note : It is best to wait till your breastfeeding is well established prior to bottle feeding your baby.

Swap the storage **Lid** with a sterilised **Teat** assembled with **Collar** to convert the **Breast Milk Storage Container** into a **Feeding Bottle**.

Always check the temperature of the milk before feeding it to your baby. Excess milk left over after a feed should be discarded. Do not refreeze thawed expressed milk.

## 14. Troubleshooting

Problem	Check	Solution
Breast Pump Device is not working	 <b>Button</b>	Ensure you <u>press &amp; hold</u>  button (>1 sec)
	<b>Power Adapter</b>	Check if your <b>Power Adapter</b> is properly connected to <b>Breast Pump Device</b> .
	<b>Suction</b>	Check if you are using a <b>lower suction level</b> . Press <b>+</b> button to increase, or <b>-</b> button to decrease the suction strength. For double pumping, a higher suction level is required. (Recommended <b>Level 6</b> onwards)
Battery Problems	<b>Battery</b>	Charge the <b>Breast Pump Device</b> and check if the <b>Battery Status (III)</b> is fully charged on the screen. If the <b>Battery Status</b> isn't charging, verify that the <b>Power Adapter</b> is connected properly.
No or low suction	<b>Flange (SoftSground™)</b>	Ensure <b>Flange (SoftSground™)</b> is held firmly on your breast with a complete seal without air leakage.
	<b>Silicone Tubing</b>	Ensure the <b>Silicone Tubing</b> are properly connected to the <b>Suction Port</b> and <b>eCap (SoftSground™)</b> .
	<b>eDiaphragm (SoftSground™) / Manual Diaphragm (SoftSground™)</b>	Inspect the <b>eDiaphragm (SoftSground™) / Manual Diaphragm (SoftSground™)</b> for holes and tears. For <b>Manual Breast Pump</b> : Remove and separate <b>Stem</b> from <b>Manual Diaphragm (SoftSground™)</b> . Inspect the <b>Stem</b> for cracks or chips. Inspect the <b>Manual Diaphragm (SoftSground™)</b> for holes and tears. Replace component(s) prior to pumping if <b>flaw</b> or damage is observed. Reassemble and ensure <b>Stem</b> is snugly fitted into slot on <b>Manual Diaphragm (SoftSground™)</b> .



<b>Problem</b>	<b>Check</b>	<b>Solution</b>
	<b>Suction Port</b>	If single pumping, ensure the unused <b>Suction Port</b> is fully capped.
	<b>eCap (SoftSquround™)</b>	Ensure all 4 catches of the <b>eCap (SoftSquround™)</b> are properly locked with the <b>Pump Body (SoftSquround™)</b> . Unsecured locking will cause suction leaks. Check if the <b>eDiaphragm (SoftSquround™)</b> is properly sealed along the rim of the <b>Pump Body (SoftSquround™)</b> .
Feel Pain or Pressure	<b>Suction Level</b>	Check if you are using a higher suction level. Press <b>—</b> button to decrease the suction strength. For single pumping, the recommended maximum <b>Suction Level</b> is <b>9</b> . If you continue to experience discomfort while pumping, contact a breastfeeding specialist.
Milk doesn't flow into container	<b>Valve</b>	Check that expressed breast milk is not touching tip of <b>Valve</b> during pumping. Exceeding maximum level may cause leakage and affect pump performance. Remove <b>Valve</b> from <b>Pump Body (SoftSquround™)</b> . Inspect the <b>Valve</b> for holes or tears. Replace component(s) prior to pumping if <b>flaw</b> or damage is observed. Wash <b>Valve</b> as per Cleaning Section.
<b>Manual Breast Pump</b>	<b>Manual Handle (SoftSquround™)</b>	Ensure Pivot is pinned correctly into the opening at the side of <b>Pump Body (SoftSquround™)</b> . A clear click should be felt.

Note : If you regularly express more than 150ml of breast milk per session, use Hegen PCTO™ 240ml/8oz Breast Milk Storage Container(s) to prevent overfilling or spillage.

## 15. Accessories & Replacement Parts

To buy accessories and/or replacement components, visit [www.hegen.com](http://www.hegen.com). You can also contact our Hegen Customer Service at [warranty@hegen.com](mailto:warranty@hegen.com).

## 16. Limited Warranty

This product is intended for repeated use by a single user and should not be shared among users as it may present health risks or affect its performance that voids the warranty. This product is warranted by Hegen Pte Ltd to the original retailer purchaser against defects in materials and workmanship for a period of 1 year from the date of purchase. This warranty does not cover damage caused by accident, misuse or abuse, alteration, improper maintenance and connected to improper power supply. All components except the **Breast Pump Device** and **Power Adapter** are not covered by warranty.

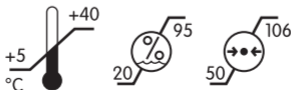
Hegen Pte Ltd retains the rights to repair and/or replace the product, subject to availability. All returns and exchange will take place onsite at Hegen Pte Ltd or our Authorised Distributor. Purchaser will bear the cost for returning the product. If you require repair and/or replacement of this product, email us at [warranty@hegen.com](mailto:warranty@hegen.com) with your order reference, invoice/receipt as well as a photograph and description of the defect.

Register your product at [www.hegen.com/warranty](http://www.hegen.com/warranty) with your product serial number and invoice/receipt number. For more information on our products, please visit [www.hegen.com](http://www.hegen.com).

## 17. Technical Specification

Model	: Hegen Electric Breast Pump
Pump Dimension	: 95 x 98 x 51.1 mm
Weight (Pump Device)	: 230 g
Protective Type	: Class II
Max Vacuum	: -300 mmHg ( $\pm 20\%$ )
Suction Level Range	: 12 Levels
Input (Adapter)	: 100-240 VAC, 50/60Hz, 0.35A Max (HNDI050150WB), or 100-240 VAC, 50/60Hz, 0.35A Max (HNAA050150C1), or 100-240 VAC, 50/60Hz, 0.35A Max (KA12C-0501500EU)
Output (Adapter)	: 5V, 1.5A
Battery	: 2 x 3.7V, 800mAh Li-Ion
Max. Operation Time	: 30 mins (auto off)/ each pumping session
Manufacturer	: Fitson Sdn Bhd 19 Jalan I-Park SAC 3, Taman Perindustrian I-Park SAC, 81400 Senai, Johor, Malaysia.

## 18. Environmental to Use



## 19. Disposal



The product is made of various metal and plastics. Use your local return and collection system for waste electrical and electronic equipment (including batteries). Improper disposal may have harmful effects on the environment and on public health.

- Do not dispose of Li-Ion battery with general waste.
- The battery must be removed from the appliance before it is scrapped.
- Please return it to a suitable battery disposal or recycling collection point.
- The appliance must be disconnected from the supply mains when removing the battery.
- The battery is to be disposed of safely.

### **HOW TO REMOVE BATTERY FROM DEVICE FOR DISPOSAL:**

- Unfasten 3 screws from back of base casing and open up the base casing.
- Find the battery and its connected wires.
- Unplug socket of battery from its PCB connector carefully.
- Remove the battery and dispose it according to Disposal Guide.

## 20. Other Languages



To read the **Electric Breast Pump (SoftSground™)**  
Instruction for Use in other languages, scan this QR code:



ENGLISH / 简体中文 / DEUSTCH / ESPAÑOL / FRANÇAIS /  
ITALIANO / BAHASA INDONESIA / РУССКИЙ / 日本語 /  
한국어 / ภาษาไทย / اللغة العربية / NEDERLANDS

Copyright © Hegen

Hegen retains all intellectual property rights to this product and packaging. Including all designs, graphic images and text. Any reproduction of materials is strictly prohibited and constitutes infringement.

All Rights Reserved.

Patent Pending.

**Hegen Pte Ltd**  
**438A Alexandra Road**  
**Block A Alexandra Technopark**  
**Unit #02-01 Singapore 119967**

EN14350



Art 523