

FraserGrace







# Muuna

Multi-purpose work chair  
Design: Massimo Costaglia  
& Giulio Mazzanti (IT)



MU 3101.15  
SELF 1C



MU 3101.15  
SELF 1C

\* with optional wingtip upholstery



MU 3101.04  
SELF 1C

## Base variants



MU 3101.15



Black plastic



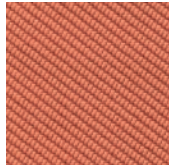
White plastic



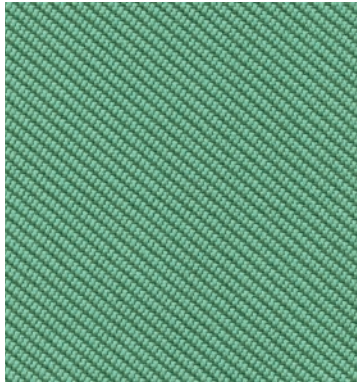
MU 3101.04



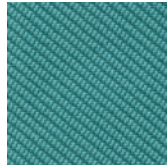
Polished aluminium



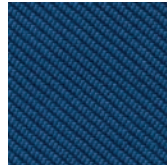
4354



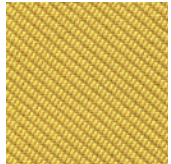
4356



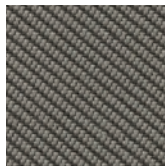
4353



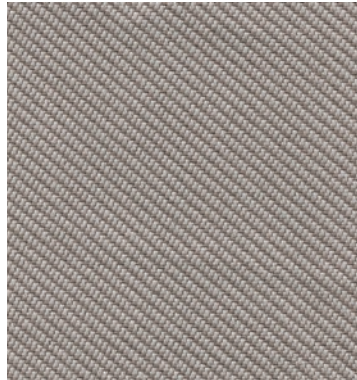
4358



4355



4357



4352

## Oceanic fabric

A product of today with a forward looking perspective. Environmentally-friendly Oceanic fabric is made from recycled plastic waste that currently pollutes our seas and oceans. We offer the Oceanic fabric in five colours.



4351

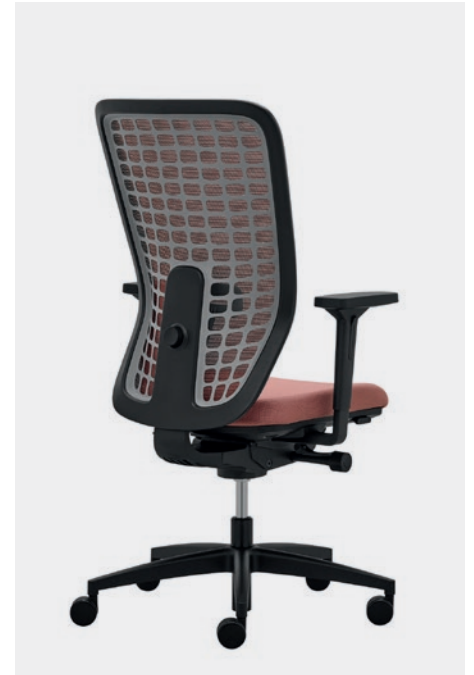


# Space

Task chair  
Design: Robin Platt (UK)



SP 1501  
ST1 / Type Ax



SP 1522  
S3D



SP 1502  
ST1 / Type A





# Zero G

Multi-purpose work chair  
Design: Stefano Sandonà  
& Sabrina Bettini (ES)



ZG 1351



ZG 1352



ZG 1354





Winx

# Winx Lounge

Lounge chair  
Design: Kai Stania (AT)



WX 886.01



WX 886.13



WX 885.16



WX 886.17



WX 885.09



WX 885.17



WX 889.16



WX 889.01





# Winx

Design: Kai Stania (AT)



WX 881.03



WX 881.09



WX 881.06



WX 880.01



WX 880.03



WX 880.06



WX 880.04



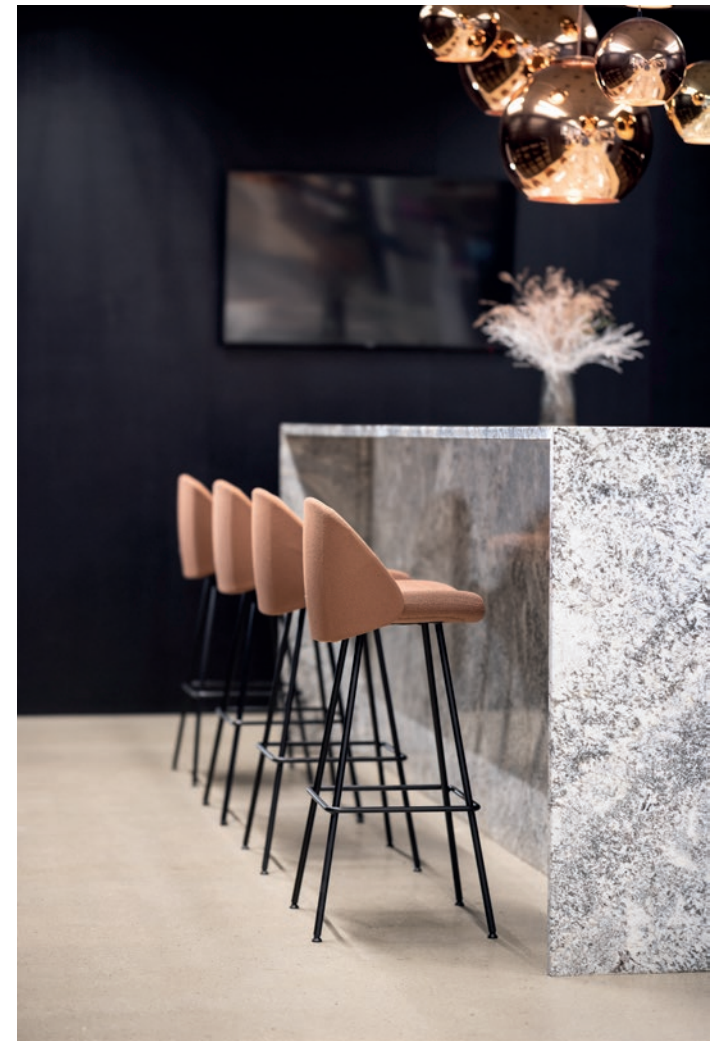
WX 880.15



WX 882.24



WX 882.27





# Organix

## Organix Privacy

Meeting booth  
Design: Kai Stania (AT)



Organix Privacy Box | Setup

OX 5295 | Table



OX 5281.01 | Single seat



OX 5281.06 | Single seat



OX 5281.09 | Single seat



OX 5282 | Double seat



OX 5283 | Screen

# Organix Lounge



OX 5263



OX 5261



OX 5262



OX 5262.06



OX 5262.09

# Organix Tables



OX 5291



OX 5292



OX 5293



OX 5293.10

# Organix Corner System



Organix System | Setup



OX 5272  
corner 60°



OX 5271  
corner 90°



OX 5273 / OX 5274



OX 5275 / OX 5276





# Cubix

## Cubix

Lounge Sofa  
Design: Kai Stania (AT)



CX 5210



CX 5212



CX 5222



CX 5232



CX 5251



CX 5211



CX 5221



CX 5253



CX 5231 | with low armrests

# Redonda

## Redonda

- Writing tablet option
- Shell colours: Black, White, Petrol, Olive green
- Row connector option



RE 960.000



RE 960.001 | upholstered seat



RE 960.300



RE 960.100



RE 960.101 | upholstered seat



RE 960.301 | upholstered seat

# Edge



## Edge

Side chair  
Design: Kai Stania (AT)



ED 4201.15



ED 4202.07



ED 4201.06



ED 4202.06



ED 4201.07



ED 4211.13

# Stones

Soft perch stools  
Design: Martin Kozucharov (CZ)



SE 7768



SE 7766



SE 7765.01



SE 7765.21



SE 7770



SE 7770.20



SE 7773



SE 7772



SE 7771

# Tables & Stools



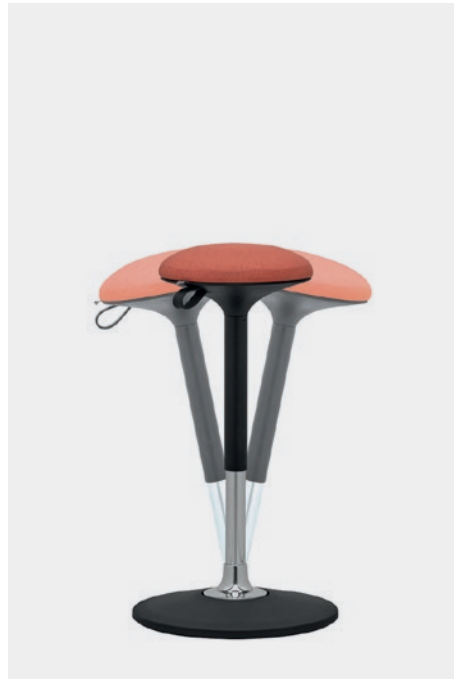


# Bello

Soft perch stools  
Design: Martin Kozucharov (CZ)



BL 7360



# Coffee Tables



CX 5254



CX 5255



CV 871.06

# Connect

Meeting tables  
Design: Rim Design Team (CZ)



CO 5625



CO 5626



CO 5621



CO 5623





# Witty

## Witty

Occasional tables  
Design: Rim Design Team (CZ)



WT 5461 | Standard 745x860x860 mm



WT 5464 | Tall 1110x860x860 mm



WT 5465 | Tall 1110x1660x860 mm



WT 5494 | Stool

# Upholstery Fabric

Category	Composition	Width	Abrasion Resistance	Weight
P Bondai	100% polyester	1,40 m	150 000	350 g/lin.m. ±5%
A Era	100% polyester	1,40 m	100 000	448 g/lin.m. ±5%
A Phoenix	100% polyester	1,40 m	100 000	399 g/lin.m. ±5%
B Valencia	100% vinyl	1,37 m	300 000	650 g/m <sup>2</sup>
B Urban	100% recycled polyester	1,40 m	100 000	476 g/lin.m. ±5%
B Milton	97% polyester, 3% nylon	1,40 m	150 000	420 g/lin.m. ±5%
B Jet Bioactive	100% polyester Trevira CS bioactive	1,40 m	65 000	365 g/lin.m. ±5%
B Tonal	99% recycled polyester, 1% polyester	1,40 m	100 000	315 g/lin.m. ±5%
B Nairobi	100% polyester / water repellent	1,40 m	100 000	390 g/lin.m. ±5%
C Fame	95% wool, 5% polyamide	1,40 m	200 000	630 g/lin.m. ±5%
C Step	100% polyester Trevira CS	1,40 m	100 000	470 g/lin.m. ±5%
C Step Melange	100% polyester Trevira CS	1,40 m	100 000	470 g/lin.m. ±5%
C Silvertex	100% vinyl	1,37 m	300 000	685 g/m <sup>2</sup>
C Oceanic	100% recycled polyester	1,40 m	100 000	695 g/lin.m. ±5%
C Crisp	93% wool, 7% polyamide	1,40 m	200 000	460 g/lin.m. ±5%
C Grain - unicolor	92% recycled polyester, 8% polyester	1,40 m	100 000	615 g/lin.m. ±5%
C Grain - multicolor	80% recycled polyester, 20% polyester	1,40 m	100 000	615 g/lin.m. ±5%
D Tresigallo	22% wool, 22% acrylic, 22% polyester, 14% visco	1,40 m	30 000	810 g/lin.m. ±5%
D Flax	50% polyamide, 30% wool, 20% flax	1,40 m	200 000	545 g/lin.m. ±5%
D Blazer	100% wools	1,40 m	50 000	460 g/lin.m. ±5%
K+R 482 (mesh)	99% polyester, 1% elasthan	1,65 m		300 g/lin.m. ±5%
K+R (mesh)	97% polyester, 2% polyamide, 1% elasthan	1,20 m		370 g/lin.m. ±5%
Omega (mesh)	100% polyester	1,60 m	100 000	500 g/lin.m. ±5%
Rib (mesh)	97% polyester, 2% polyamide, 1% elasthan	1,60 m	150 000	400 g/lin.m. ±5%
Shrinx (mesh)	70% polyester, 30% polyamide	1,20 m	170 000	450 g/m <sup>2</sup>
Tale (mesh)	99% recycled polyester, 1% polyester	1,40 m	100 000	365 g/m <sup>2</sup>
E Leather Prince	leather thickness of 0,9 - 1 mm			
E Leather Optimo	leather thickness of 1,1 - 1,3 mm			
Line	64% polyester, 36% polyurethane	1,40 m	150 000	600 g/bm ±5%

Upholstery in own fabric is subject to individual calculation. Unsuitable upholstery fabrics may be rejected according to the Business Terms. Individual supply of upholstery fabrics may have slight colour differences.

#### IMPORTANT NOTICE:

Minor variations in colours and shading can be natural properties of Milton fabrics. It has the fully natural property of hair like materials.

#### Delivery terms

Standard variant	4-6 weeks, unless stated otherwise for individual prodcust
Special variant for a surcharge	100% polyester

#### Warranty terms

Components	5 years
Upholstery	3 years
Tables	3 years

# FraserGrace

93-99 Goswell Road  
London EC1V 7EY  
United Kingdom

0207 336 7222  
[sales@koplus.co.uk](mailto:sales@koplus.co.uk)

[www.frasergrace.com](http://www.frasergrace.com)