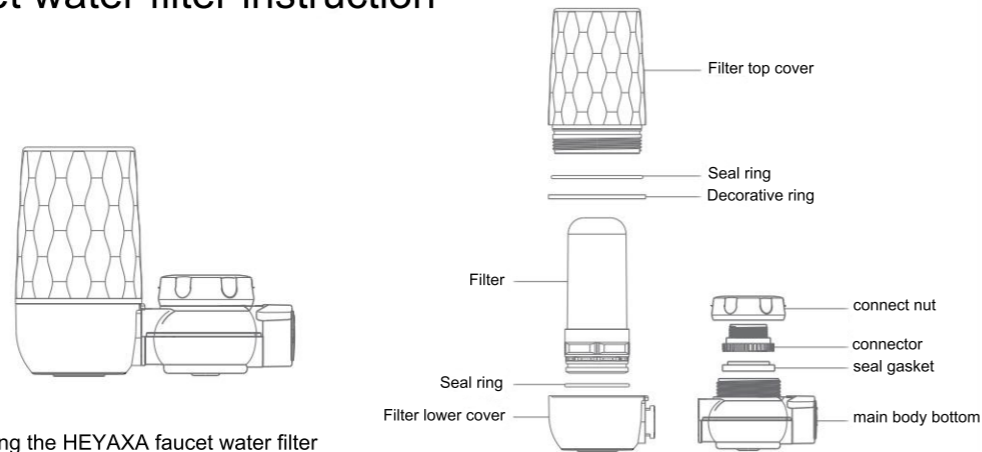




Faucet water filter instruction

Thank you for choosing the HEYAXA faucet water filter. Before use, please carefully read the instructions and become familiar with the application method to ensure optimal performance. We appreciate your cooperation.

Name of each component



Before using the HEYAXA faucet water filter please read the instructions carefully. This picture only supplies the reference, please take the actual product as the standard.

Technology data

Product name	Faucet water filter
Size	5.24×4.25×2.56 in
Net weight	0.57 lb
Suitable water pressure	0.1~0.4 MPa
Suitable water temperature	41~100.4°F
Filter water flowing	0.13 gal/min
Rated filter water	80L (21gal)
Filter type	Ceramic activated carbon composite filter
Life time of filter	Six month (It rely on the real water quality)

Instructions of usage

1. There may be a small amount of black water flowing out the first time you use it. Please flush it with water for 60 seconds before using it.
2. If not used for a long time, please flush the filter with water for 60 seconds before using it again.
3. This faucet water purifier is only suitable for indoor use. Please do not use it in direct sunlight or outdoors.

WARRANTY SERVICE

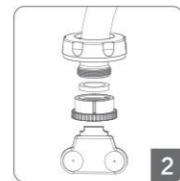
You can contact our customer service through our official website or e-mail.
 After-sales Email: support@heyaxa.com
 Official Website: www.heyaxa.com
 Thank you for your purchase!

Assemble method

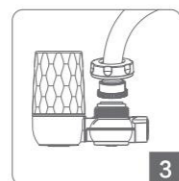
Before assembling please choose the well-matched size of the internal tooth connector and outer tooth connector on the basis of the water tap's outer tooth size.



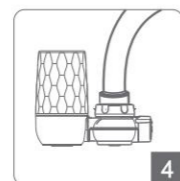
1. Remove the bubbler from the faucet.



2. Insert the connector nut into the faucet and place the sealing ring on the top side of the internal tooth connector. Use the provided wrench to tighten it firmly.



3. Connect the threaded nut with the bottom of the main body and tighten it firmly.



4. After finishing the assembly, slowly open the faucet switch and check for any water leaks.



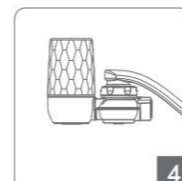
1. Remove the bubbler from the faucet.



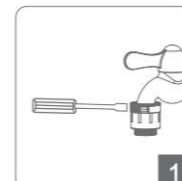
2. Insert the connector nut into the faucet and place the sealing ring on the top side of the internal tooth connector. Use the provided wrench to tighten it firmly.



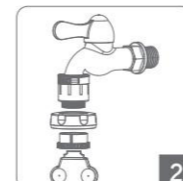
3. Connect the threaded nut with the bottom of the main body and tighten it firmly.



4. After finishing the assembly, slowly open the faucet switch and check for any water leaks.



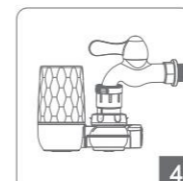
1. Put multifunctional connector connect with faucet, then use straight screwdriver screw multifunctional connector tightly.



2. Insert the connector nut into the faucet, place the sealing ring on the top side of the internal thread connector, and tighten it firmly with the equipped wrench.



3. connect the screw nut with main body bottom. Screw it tightly.

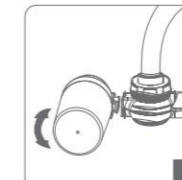


4. finished assembling please open the switch of faucet slowly and checking if it leaking water or not.

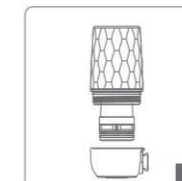
Filter replacement



1. Before replacing the filter, please turn off the faucet.



2. Flip over the filter assembly.



3. Remove the main transparent cover of the filter cartridge, then take out the filter for cleaning or replacement.

Maintenance

- ① Regular cleaning of the filter is necessary during use to ensure filtration performance.
- ② It is recommended to replace the filter every 6 months.