

FT-SH SLIM PROFILE AREA LIGHT

EXTERIOR LUMINAIRES



Fotonz's Led Slim Profile Area Light with its High lumen output can be used to illuminate a large area.

It is built from one-piece die-cast aluminum housing with high quality outdoor powder coating finish. The housing is completely sealed against moisture and environmental contaminants. The heat sink design dissipates heat enabling a long and reliable LED life. It can be customized for any type of outdoor lighting application just by changing the mounting.



DIE-CAST ALUMINUM HOUSING

Fotonz's LED Luminaires provide a sturdy body that stands high wear and tear while keeping the fixtures as light as possible.



TYPE III DISTRIBUTION

The FT-Slim Profile Flood Light comes with Type III distribution an Ideal option to provide optimal lighting regardless the mounting area.



MULTIPLE MOUNTING OPTIONS

Designed to be used with various mounting options to suit different applications (Slip fitter, Straight Arm, Trunnion Swivel)



EFFICIENT HEAT DISSIPATION

STACK EFFECT design maintains a cooler surface temperature and dissipates maximum heat produced by the fixture.



DUAL VOLTAGE (120V - 347V)

Fotonz's LED Luminaires supports 120V to 347V, making our fixtures the ideal choice for old and new buildings



SURGE PROTECTION

6kV protection components are both current and voltage limited. Protects device from sudden surge of large amount of current/voltage.

TECHNICAL SPECIFICATIONS

CONSTRUCTION

- Die-cast Aluminum Housing
- Cree 3030 LED
- Bronze housing color (other colors by order)

INSTALLATION

- Different mounting options (Straight Arm, Slip fitter and Trunnion Swivel)

WARRANTY

- 5 years Limited Warranty

ELECTRICAL

- "UH" models has operating voltage of 120-347V (upto 150W)
- "U" models has operating voltage of 120-277V
- "H" models has operating voltage of 347-480V
- Surge Protection - LED drivers have up to 6kV
- Power Factor >0.95
- Operating Temperature of -40°C - 55°C (-40° F to 131°F)

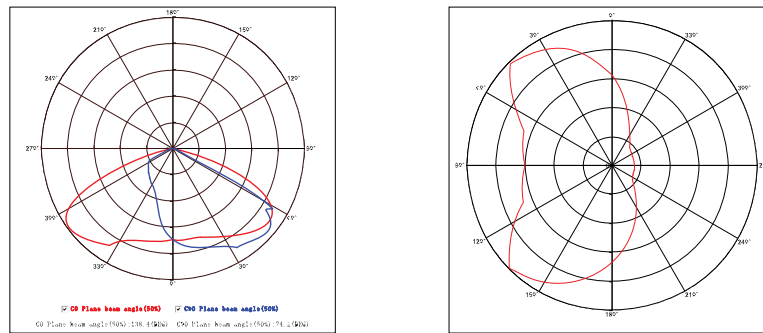
LISTINGS & RATINGS

- cETLus
- DLC listed
- Wet Location
- IP65
- Rated Lifetime of L70 120,000+ hrs

APPLICATIONS

- Parking Lots
- Car Dealership
- Stadium
- Tunnel Lighting
- Outdoor sports area

PHOTOMETRIC DIAGRAM - TYPE III DISTRIBUTION



TYPE III

ORDERING GUIDE

FT - SH100 - 4K - U - SF - T III - BZ

MODEL NUMBER	COLOUR TEMP	VOLTAGE	BRACKETS	OPTICS	HOUSING COLOR
SH75 75W/12000LM	3K 3000K(By Order)	U 120-277V	SF Slip Fitter	T III TYPE III	BZ Bronze(Standard)
SH100 100W/15700LM	4K 4000K(Standard)	UH 120-347V	SA Straight Arm		B Black
SH150 150W/22000LM	5K 5000K(By Order)	(Only available up to 150W)	TS Trunnion Swivel		W White
SH320 320W/43879LM		H 347-480V			G Grey
					CU Custom

PROJECT:

TYPE:

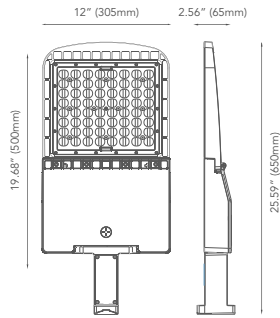
NOTES:

DIMENSIONS

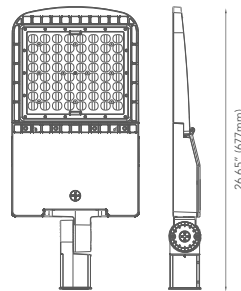
75W
100W
150W



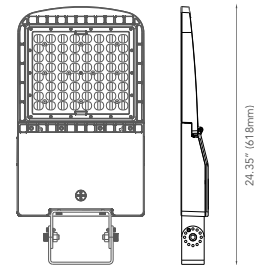
Length: 19.68" (500mm)
Width: 12.00" (305mm)
Height: 2.56" (65mm)
Weight: 11.7lbs (5.3kgs)



Straight Arm

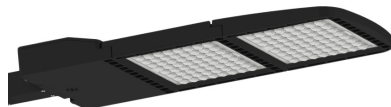


Slip Fitter

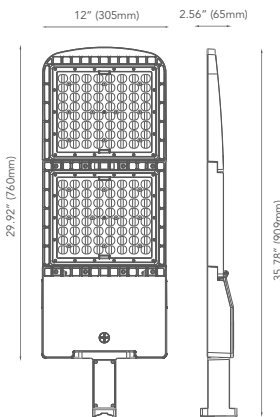


Trunion Swivel

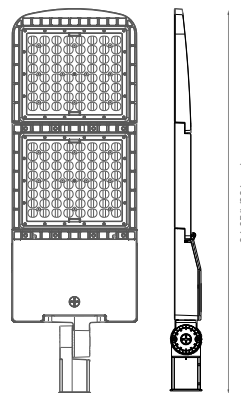
320W



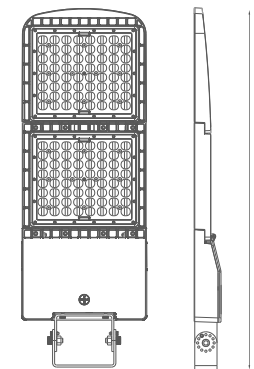
Length: 29.92" (760mm)
Width: 12.00" (305mm)
Height: 2.56" (65mm)
Weight: 18.9lbs (8.6kgs)



Straight Arm



Slip Fitter



Trunion Swivel

BRACKETS



FT-SH-SF
Slip Fitter



FT-SH-SA
Straight Arm



FT-SH-TS
Trunnion Swivel

MOUNTING OPTION

