



ROUND LED HIGHBAY

Applications:

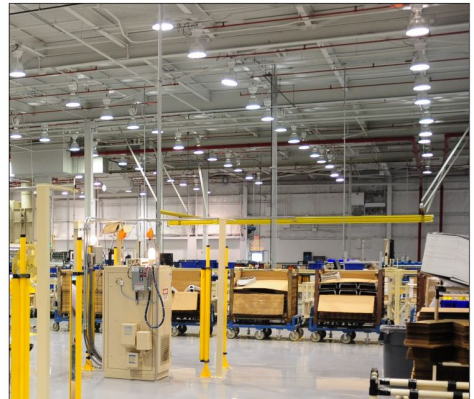
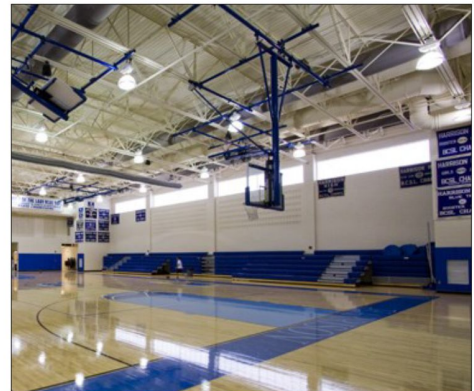
- Convention Center
- Big Box Retail
- Sports and Recreational Center
- Warehouse
- Manufacturing
- Refrigerated storage



(Optional)

KEY FEATURES & BENEFITS

- Precision Spherical and convex lens that offers Low brightness, uniform illumination, and high efficiency LED platform
- -40°C to 55°C (-40°F to 131°F) ambient up to 65°C (140°F)
- 20% more area of the thermal air convection holes for better thermal performance
- Pre-installed 6 feet whip for quick installations
- Optional Intergyral sensor system
- IP65, water and dust resistant
- Ultra-light weight - 8.8 lbs and easy to install
- Glare free (UGR<19)
- 1-10V dimmable
- Up to 150 lumen/W
- 120-277V, 120-347V, 347/480V



Multiple Mounting Options

The fixture includes a mounting hook that can be re-moved for pendant mounting on 3/4" NPT pipe threads.

Die-cast Aluminum

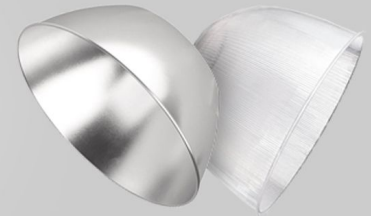
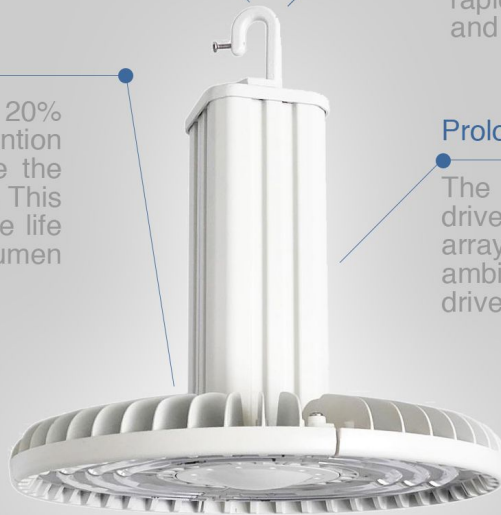
Die-cast aluminum housing with standard polyester powder coat finish painted for increased durability and rust protection. Provides excellent thermal management for rapid heat dissipation to promote a long and reliable life.

Thermal Air Convention Design

The housings are designed with 20% more area of the thermal air convention holes, which greatly help to reduce the heat from the housing and the driver. This excellent thermal control ensures the life of the fixture and lowers the lumen attenuation.

Prolong Driver Compartment

The arm design high bay fixture ensures driver compartments separated from LED array / heat sink structure, which lowers the ambient temperature to help prolong the driver life.



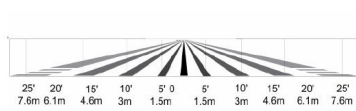
Precision Spherical and convex lens

Spherical and convex lens that offers Low brightness, uniform illumination, and high efficiency LED platform.

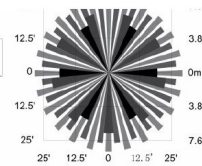
Integral Sensor

Integrated sensor for additional control and energy savings.

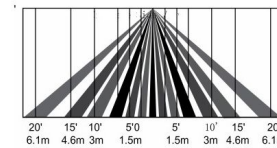
INTEGRATED SENSORS



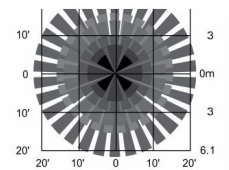
Coverage Side View



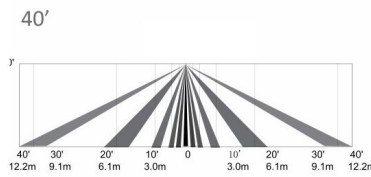
Coverage Top View



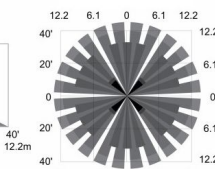
Coverage Side View



Coverage Top View



Coverage Side View



Coverage Top View