

The Spring edition

ISSUE — .001



GATHERED
LIVING



from THE editors

Welcome to our first issue of Gather Magazine — full of seasonal inspiration from styling ideas, recipes for your own gatherings and conversations with our Gathered friends. It's an opportunity to get to know our founders a little bit more, bringing you inspiring content from our photo shoots and a chance to be part of our growing Gathered community.

In this debut issue, discover all about 'A Timeless Family Abode' nestled in the heart of Suffolk, alongside an inspiring chat with renowned colour consultant Emma Diaz and much more...

We hope you enjoy exploring these pages and find inspiration for your own home.

with love, ALI, MEG & ABBI x





contents

6	Welcome to Gathered Living — Our Story
8	Seasons of Life — Introducing Megan Wright
12	Spring Awakening — Inviting Spring into your Home
21	Gathered Moments — The Laundry Room
24	Come on in — A Timeless Family Abode
32	Spring Edit — Our Favourites
34	From the Pantry — Time for Supper
38	Meet the expert — In Conversation with Colour Consultant Emma Diaz
46	Garden Jottings — Into the Garden we Go





WELCOME TO GATHERED LIVING

Our Story —

Gathered Living is a collection of like-minded interior brands bringing together a curated selection of unique and timeless homewares. Our Gatherers (those who value a personal and unique home) are the cornerstone of our brand; creating a Gathered community and sharing a mutual passion for beautiful home styling and interiors. Founded by interior brands MW Home & The Interiors Yard, together with their knowledge and interior passion, they are on a mission to bring together a community of people who value and love their homes.

Let us tell you a little about our ethos,
To Inspire To Gather To Live
So you can get to know us a little bit more...

TO INSPIRE

Embark on a journey of interior inspiration with our collection of interior pieces and latest findings on gathered-living.com and our social media platforms. Navigate by room, by collection or delve into our shoppable lookbooks and be empowered to become your own stylist. Be inspired by fellow 'Gatherers' in our community as they share their homes with us.

TO GATHER

The joy of a delightful gathering resonates with all. Whether you're arranging a dinner party or outdoor soiree, we have all the interior pieces to assist you in creating the perfect gathering. Our own Gatherings will create memorable, unique lifestyle events which will evoke connection with like-minded people and our products. We will also curate the perfect collection of gathered products seasonally, to help inspire creativity in your own home.

TO LIVE

We believe that your everyday beautiful starts at home. Whether it's relishing your morning cup of coffee in your cherished mug or snuggling on the sofa with a book and blanket. These small moments in time, shouldn't be overlooked and create the foundations of a truly beautiful home. We will help create these 'Gathered Moments' with our interior collections.

We welcome you to join our Gathered community and embark on our thoughtful living journey.







SEASONS OF LIFE

Introducing Megan Wright — Founder, home maker & frequent daydreamer

Embarking on our GL journey, forging our path and defining the ethos of our vision, as founders we soon discovered a collective passion for interiors and love for our homes. Bringing our shared enthusiasm for thoughtful living and sourcing pieces which are interior heirlooms for years to come, our mission to make your everyday beautiful starts at home, began. Being at different phases of our life, although the founders of GL share a common love for interiors, we soon discovered that our priorities for thoughtful living in our homes slightly differ and that's what makes our offering so unique.

SO HERE'S MEG TO SHARE WITH YOU HER STORIES FROM HOME —

TELL US A LITTLE BIT ABOUT YOUR HOME & WHERE YOU LIVE?

I live in a charming Hampshire village in a cosy little 2 bedroom, semi detached home from 1935 that I lovingly refer to as 'The Cottage'.

WHAT INSPIRED THE DESIGN AESTHETIC OF YOUR HOME?

I appreciate the beauty of so many different design aesthetics and can see myself living in them; being in this industry makes it challenging to pick just one aesthetic style as we're surrounded by beautiful things.

For this house I want to create a cosy cottage with a more modern feeling, though for now it's ever evolving as we move away from the style we had in our first home, which was an apartment.

My home will always have a slightly eclectic feel to it because it is 'Gathered' as I move through life and travel.

HOW WOULD YOU DESCRIBE THE OVERALL ATMOSPHERE & STYLE OF YOUR HOME?

The overall feel of our home is eclectic and comfortable.

WHAT IS YOUR FAVOURITE PART OF YOUR HOME & WHY?

I love our living room. At the end of last year, we had a log burner and stone surround fitted in what was just a blank chimney breast. It provides the perfect focal point that feels as though it's always been there, playing into the 'cottage' aesthetic.

While the décor of the room may not be exactly as I want it just yet, it's a wonderful space to relax with a book as the sun streams in on the front, work on my crafts by the fire or hang out with friends, gathering around to play board games with wine and cheese.

An added bonus is that I can look out of the windows to the front and back to watch the wildlife. We're in the countryside with the river on the other side of the road so we often have ducks and in the spring, ducklings in our front garden.



“I appreciate the beauty of so many different styles — it’s hard to pick just one”



IF YOU WERE TO PAINT A PICTURE OF YOUR PERFECT SATURDAY SPENT WITHIN THE CONFINES OF YOUR HOME, HOW WOULD IT UNFOLD?

The perfect Saturday at home for me varies seasonally but it always starts with making a 'proper' coffee either with a percolator or cafetiere, we always put on some music which changes depending on our mood and we make some kind of cooked breakfast, whether it's pancakes, French toast or breakfast burritos.

I look at screens all day during the week so for the rest of the day I love to do something creative or mindful, whether that's reading, baking, crochet, embroidery, painting, playing with clay or pottering in the garden.

I love to cook for people and make fresh pasta so having friends or family over for dinner combined with a games night is the perfect evening, before having a soak in the tub and slipping into fresh sheets with a sleepy tea - although with all that packed in, I may need more than just one day!

WHAT ARE YOUR FAVOURITE PIECES FROM THE NEW MW COLLECTION ON GATHERED LIVING?

I love the new cup and carafe set because they're so tactile and earthy- I would use it for casual dinners in the garden to serve red wine or at the breakfast table for orange juice. I've seen the work and craftsmanship that went into them first hand which makes them even more special in my eyes.

AS A DESIGNER CREATING PRODUCTS FOR MW HOME, WHERE DO YOU DRAW YOUR INSPIRATION FROM?

Honestly from everywhere. At MW Home we like to create beautiful things that have a purpose with a human made touch, adding to one's everyday life by making simple things beautiful, and so inspiration can come from the simple act of moving through life.

On our last sourcing trip to India, inspiration was quite literally all around us and watching the skilled crafts people at work was amazing.

My 'Gathered Moment' is more of a sequence of moments really — making my weekend cup of coffee while dancing around the kitchen; and then sitting in my living room to savour it while watching the birds through the window.



SPRING AWAKENING

Inviting spring into your home
with Gathered Living

Anyone with a penchant for interiors and styling will know that the season of spring is a true delight. Adding small touches around the home to shift from those cosy winter days to light, sun dappled moments brings joy to the everyday.

As the daffodils dance in the spring breeze, doors are flung open and pockets of sunlight tease through the windows. We yearn for days spent idling in the garden, listening to birdsong with the scent of cut grass filling the air.

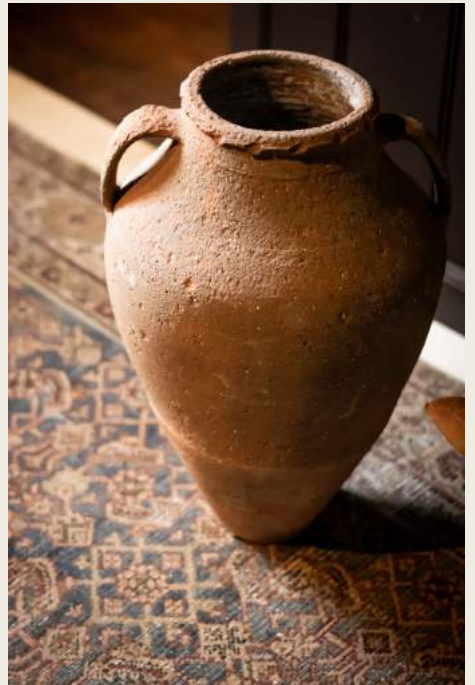
As the dark evenings make way for longer days, we find ourselves enveloped in the enchantment of the spring season and all the delicate beauty this joyous season evokes.

Enjoy a peruse of moments from our latest photo shoot hosted in a timeless, family abode.

















GATHERED MOMENTS

How would we define a Gathered moment? It's a moment in time, to reflect, to take a breath and pause. To find beauty in the everyday, a moment to gather yourself and make small touches to enhance the mundane. Perhaps it's enjoying your morning coffee in your favourite mug or cosying under your duvet for a well-deserved slumber, or maybe sitting in your cherished armchair whilst losing yourself in a good book.





THE LAUNDRY ROOM

Day to day household chores can become a calming ritual, giving structure to your day and in this edition, we focus on the Laundry Room. Often misconstrued as the least inspiring yet most overused room in the house, this space can bring much joy with subtle styling, adding little details and pretty touches to transform those mundane household tasks into something more extraordinary.

Here's our top five 'Laundry Moments' product heroes

NoustaSeagrass Baskets are perfect for freshly folded laundry

Ceramic coffee beakers for storing essential household items like clothes pegs

Vintage Washboard for a decorative touch to add instant rustic charm

A Rustic Reclaimed Stool for a helping hand for those hard to reach places

The Bruton Bowl for a floral arrangement or simply to elevate a worktop, this hand thrown terracotta bowl, a nod to the traditional dairy bowl, is a beautiful addition to any home.



COME ON IN

A timeless family abode

We had the pleasure of shooting our spring collection at the Rectory and this beautiful family home really is a sight to behold. A home with soul, every nook has been carefully considered by its owner, Amanda and her vision is awe-inspiring.

Nestled in a small Suffolk village, Amanda lives here with her husband, four children and two spaniels. When asked what she enjoys the most about the idyllic location, Amanda says "Impromptu seaside suppers and dog walks on the beach, come rain or shine".

HERE SHE TELLS US THE STORY BEHIND HER TRANQUIL ABODE —



AMANDA, WHAT'S THE INSPIRATION BEHIND THE DESIGN & DECOR OF YOUR HOME?

Well, it's an Edwardian red brick home with a fascinating story to tell. We have been here for 20 years and knew instantly on viewing that we wanted to bring up our family here. It has a warm, cosy feeling for a large house. It had all the original features from the cornice, fireplaces and even the servants accommodation in the attic. We knew we could enhance the house by changing some of its layout and bringing her back to life. The back kitchen became our children's playroom and the south facing formal dining room eventually became our fabulous family kitchen.

I would describe the style of our home as traditional with a modern, country vibe – a real boutique family home.

WHAT IS YOUR FAVOURITE ROOM & WHY?

Oh, I have so many favourite rooms! It all depends on the day, the light or my mood! I love the drama of the copper beech coloured pantry and the calm light space of the bay windowed kitchen.

HOW DO YOU INCORPORATE YOUR PASSION FOR ART IN YOUR HOME?

I have loved art since I left home at the age of 17 when I lived in a flat with 3 of my fellow student nursing friends. I think I may have an art addiction. I get great pleasure in sourcing and buying pieces of art for around my home as well as for others.

WHAT THREE INTERIOR ITEMS IN YOUR HOME DO YOU FEEL YOU COULDN'T LIVE WITHOUT?

So difficult to choose but here goes; My Aga. I am in love with her. I'm always bereft when, in the height of Summer, she needs turning off for a few weeks.

The wood burners. Not only are they practical for their heat but also a focal point, creating ambience.

An inherited piece of furniture from a great aunt that I was very fond of.

DESCRIBE YOUR IDEAL 'GATHERED MOMENT' IN YOUR HOME?

Late afternoon, the supper is cooking and I take a few moments on my favourite sofa in the corner of the kitchen with a cup of tea with the dogs and gather my thoughts.

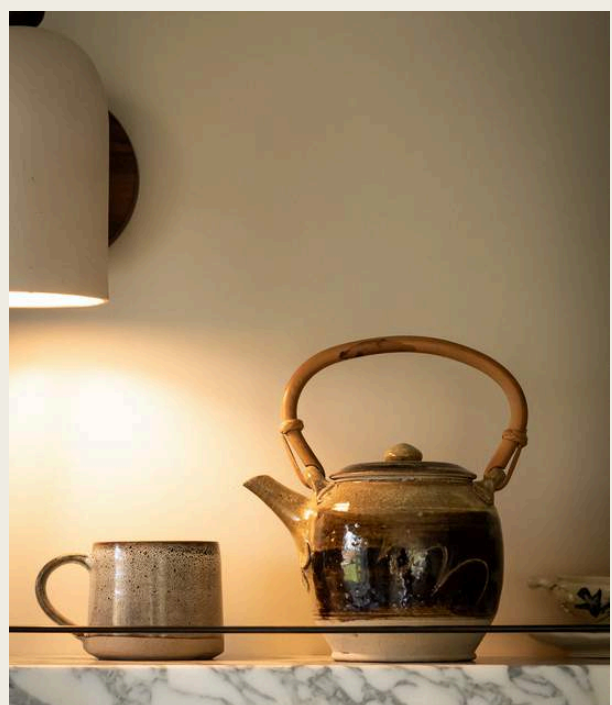
IS THERE ANYTHING YOU WOULD CHANGE ABOUT YOUR HOME?

Moving the kitchen from one side to another was a massive job but one I would do again. It was most definitely one of the best things we did here. What I would change? It would have to be a smaller garden, it's a huge cost and time thief.

YOU'VE RECENTLY LAUNCHED YOUR HOME AS A LOCATION HOUSE, ARE YOU EXCITED ABOUT WELCOMING DIFFERENT BRANDS AND BUSINESSES?

Yes, I am excited to share my beautiful home with not only established brands but also up and coming ones too. It really is a location house for everyone.

To find out more about this beautiful abode contact Amanda at: amandat@me.com or via instagram [@home.at.the.rectory](https://www.instagram.com/home.at.the.rectory)



“Impromptu seaside suppers and dog walks
on the beach — come rain or shine”







MY GATHERED MOMENT —

"I take a few moments on my favourite sofa in the corner of the kitchen with a cup of tea with the dogs and gather my thoughts"



SPRING EDIT

View the latest collection of
our favourite pieces to
enhance your everyday and
bring simplicity to your home





Rustic Round Stool - £139
THE INTERIORS YARD

Beaded Brass Pots - £12.50
MW HOME

Stoneware Carafe Cup Set of 4 -
£47.50
MW HOME

Large Kurv Basket - £65
ALSO HOME

Stoneware Kulampu Jug - £19.95
MW HOME

Stoneware Candle Cup - £11.95
MW HOME

Rena Vase - £29.50
ALSO HOME

Herringbone / Gingham Glass - £5
MW HOME

Frippy Pot - £18
THE INTERIORS YARD

GATHERED-LIVING.COM



FROM THE PANTRY

Time for Supper — with Meg

Risotto, a dish which depicts the season of spring, with its zesty ingredients and light airy texture. As every good chef will know, the key to this dish is the freshness of its components and, executed correctly, a risotto is the perfect al fresco meal. A relatively simple dish to recreate, its sure to impress your dinner guests for an impromptu Gathering and we love how quickly it comes together with minimal fuss.

SO, IT'S TIME TO GATHER THOSE CLOSE TO YOU, DRAPE YOUR TABLE LINENS, LIGHT A CANDLE & POUR THE WINE WHILST YOU SAVOUR THE DELIGHTS OF THIS SPRINGTIME FAVOURITE





THE INGREDIENTS

- 1 cup arborio rice
- 3 cups veg stock (or sub 3/4 cup of wine)
- 25g butter
- 2 shallots
- 2 cloves of garlic
- zest of 1 lemon (& 1/2 its juice if not using wine)
- 200g asparagus
- 160g fresh shelled peas (you can use frozen if you can't find fresh)
- a few sprigs of fresh thyme, measured with your heart
- black pepper, again measured with the heart



1. I like to get all my ingredients out and prepped first, putting everything in pretty little bowls and jugs. It makes cooking easier and make me feel like I'm in my own little cooking show.
2. Steam your veggies until they're warm and starting to turn vibrant but not fully cooked- you don't want to lose the crunch.
3. Melt your butter in a pan over mid-low heat and add your shallot & garlic.
4. Cook until fragrant and then add your thyme, saving some as a garnish.
5. Add your rice and stir gently but constantly until the rice starts to go translucent.
6. Turn up the heat to medium and add enough stock to just cover the rice and gently stir until the liquid has been absorbed by the rice.

7. You will start to see the bottom of the pan when you stir as the stock is absorbed, turn down the heat so the risotto is bubbling gently and add the lemon juice/ wine, a bit more stock (again to cover the rice) and the black pepper and keep gently stirring until absorbed. It will start to get creamy at this point.
8. Add your final bit of stock and stir until absorbed, then add your veggies, lemon zest and parmesan.
9. Stir to combine until the parmesan is melted & the veggies are cooked but still with a little bite.
10. Serve up and garnish with extra parmesan and thyme

BON APPETITE

Meg's Notes

If your stock gets too cool when adding it to the rice, it will make your risotto gluey. Keep your stock simmering gently in another pan and turn the heat down whenever you remove stock from it so it doesn't evaporate away. Using a ladle or pan with a spout helps when adding it to the risotto.

Using butter instead of olive oil just takes the risotto to the next level in my opinion because the rice absorbs that extra creamy flavour at the beginning.

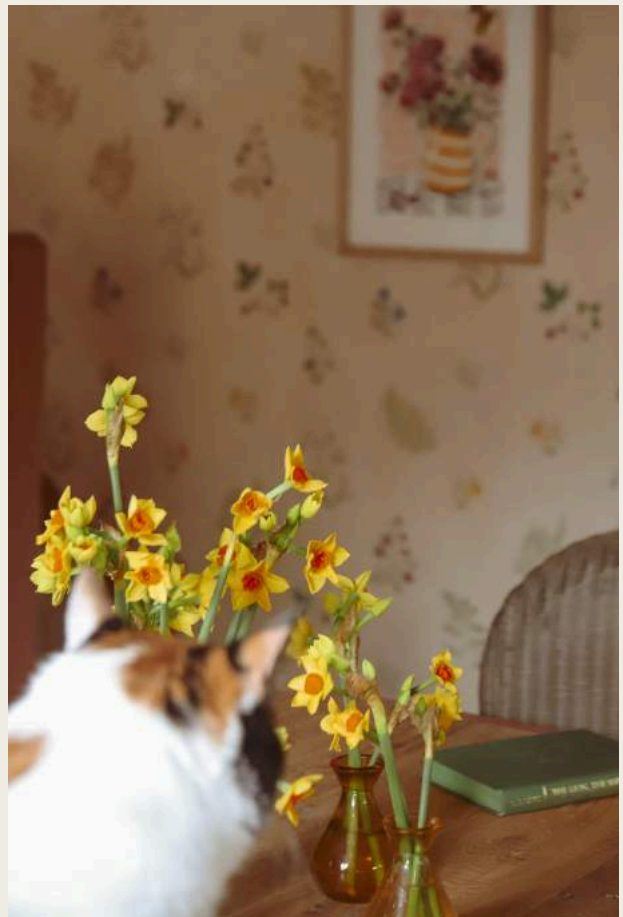


MEET THE EXPERT

In Conversation with Colour Consultant — Emma Diaz

True craftsmanship, passion and skill is a rare combination of traits so when we met with colour consultant, Emma Diaz we felt instantly connected to her ethos and the way in which her talent shines with every word she speaks.

SO, POP THE KETTLE ON & SOAK UP THE BEAUTY & SHEER WONDERMENT OF EMMA'S STORY & THE EVER EVOLVEMENT OF HER CRAFT —



TELL US A LITTLE ABOUT YOURSELF, WHERE YOU LIVE & WHO YOU LIVE WITH?

I live in a little cottage in the Cotswolds with my husband and son. We bought the cottage 11 years ago in April as a quick DIY project, but uncovered more and more history that we wanted to save and restore along the way. We are looking to move this year after spending the past ten years restoring, renovating & extending the cottage.

CAN YOU TELL US ABOUT YOUR JOURNEY INTO THE WORLD OF INTERIORS? WHAT INSPIRED YOU TO PURSUE THIS CAREER?

I accidentally fell into interiors whilst on maternity leave with my son. We'd spent the last few years extending and renovating with our own bare hands, and when I had my son I was just coming to the end of the build and crossing over into the interiors. At the time, I painted everything white until I had decided on how to use colour in the cottage, but after being creative my whole life and working in a creative industry for the best part of a decade, I realised this lack of colour was making me feel uninspired and unhappy. It was at a time where interior designers were keeping Cotswold stone properties very neutral, and there wasn't a lot of inspiration around for using colour with Cotswold stone.

So I began thinking of ways and learning through trial and error how to incorporate colour into our home, starting with my favourite colour, red. I began small, with fabrics and accessories, and people were interested in what I was doing. Edward Bulmer and his team then noticed what I was up to and offered to train me as one of their first colour consultants. I was so inspired by Edward and his wife Emma and all that they are currently working towards environmentally, and my own business naturally grew from there.

HAVE YOU ALWAYS BEEN DRAWN TO COLOUR?

Absolutely! But I'd never really thought about it before decorating our own home! I've only recently discovered a lot of my childhood clothing and artwork - which includes all the colours I love now!

HOW WOULD YOU DESCRIBE YOUR DESIGN AESTHETIC OR SIGNATURE STYLE?

Playful & charming with a considered use of colour.

WHAT DOES IT MEAN TO BE AN EXPERIENCED 'COLOUR CONSULTANT' AND HOW CAN YOU HELP PEOPLE?

As a colour expert, I look at the nuances between shades and undertones to find the perfect hues for a property to create the feeling the client wants to achieve in their space. This could be across one room or coming up with a colour palette for a whole property.

It's a quick, easy problem solving service rather than spending months on a full, in- depth project with a designer and offers much more freedom to a client. My focus is always on the natural light in a space, but importantly also how the client wishes to feel in these spaces we are working on, whether they are commercial or residential. I take into consideration any existing historical features or materials that we need to work with, as well as existing fabrics and furnishings. My personal service also puts a focus on environmentally friendly paint brands and how we can help our old buildings and ourselves, by using natural paint.



"I accidentally fell into interiors whilst on maternity leave with my son"



CHOOSING THE RIGHT PAINT COLOURS FOR YOUR HOME CAN SOMETIMES FEEL OVERWHELMING, WHAT THREE INSIGHTFUL TIPS CAN YOU SHARE TO HELP OUR 'GATHERERS' NAVIGATE THIS DECISION WITH CONFIDENCE?

There are SO many choices out there aren't there?

Firstly, think about the colours you are naturally drawn to. Forget trends- you don't want to be decorating your home every year! Think about colours you love and can live with. It may also help to think about what colours you wear if you get a little stuck!

Think about how you'd like the room to feel. Fresh or cosy? Smart and sophisticated or relaxed and laid back? Do you need warmer or cooler colours to create this feel?

Don't paint tester pots onto the walls! The natural light will change in your home from one day to the next, depending on what the weather is doing. Paint tester pots out into large pieces of card, and stick these in as many places as you can, or move them around every few days to understand how the light changes these colours. They will look different in the morning to the evening, and in lighter spaces opposite windows compared to darker corners. Take some time learning about how the light moves around your home.

YOU'VE RECENTLY LAUNCHED THE WESTRIDGE FURNITURE COLLECTION WHICH HAS BEEN A HUGE SUCCESS. WHAT INSPIRES YOU WHEN DESIGNING YOUR RANGE OF FURNITURE PIECES?

Westridge has been inspired by the colours, textures and shapes that I see throughout the year walking in our local woodlands. I am always inspired by the natural world, whether this is aesthetically, through colour and texture or how we can use the materials we are growing here in our UK forests and woodlands to create using what we have, without importation. Westridge is therefore a celebration of the colours and textures found in my local woodlands throughout the seasons, and has been inspired by many wildflowers and tree species, but also the materials that we are growing here in the UK.

Colour is of course a huge part of the collection, and I wanted to be able to offer a customisable option for every scheme, from a choice of oak colours and a large paint palette as standard, to bespoke options too.

WHAT ROLE DOES SUSTAINABILITY PLAY IN YOUR DESIGN PRACTICE?

Sustainability was a huge reason for creating the Westridge collection. I wanted to be able to offer a furniture option that was made here in England, through timber that is sustainably sourced and grown from our British woodlands (all our products are made with timber that is certified Grown In Britain) and is therefore supporting the responsible management of our British forests and woodlands. This in turn decreases importation of US and European timber, and also means we are supporting and celebrating British craftsmanship, with the pieces being hand crafted by artisans in Wiltshire. All of our pieces are finished in Edward Bulmer Natural Paint as standard which adds to our sustainability ethos. A true celebration of everything British!

WHAT'S NEXT FOR EMMA DIAZ?

As a creative, I have many ideas and ways I would like to move the business forward, from growing the consultancy side to launching new collections. But I have learnt through the past few years that I don't want to rush this. My focus is currently on mastering what I am already doing. I am very much about slow, conscious choices, choosing once but choosing well, and relaying this message to my clients and customers. Although I am constantly inspired and drawing up new ideas for pieces, instead of rushing out product after product my mission is to make more people aware of the story behind Westridge, so people really lean into the fact that it is not only beautiful furniture, but a conscious decision they are making to have Westridge in their homes forever. When they purchase a hand made, made to order piece from us, they are helping us help our environment, by aiding us to create pieces that are grown and sourced locally, allowing us to responsibly manage our woodlands, and supporting British craftsmanship by using local, British makers. I want to spend time sharing this story and talking more about the importance of British materials and British craftsmanship, and supporting and celebrating other British brands and makers who are doing the same along the way too. Then, I'll be ready to launch some new designs, but right now, my focus is on telling our sustainable story and celebrating this, learning to be proud of what we have achieved and how we can continue to work this way going forward.

We hope you have enjoyed reading all about Emma's beautiful work. To follow more of Emma's story find Emma on instagram @byemmadiaz







GARDEN JOTTINGS

Into the garden we go —

Spring is the season gardeners look forward to all year with new blooms flourishing at every turn and new life springing from the ground below. Here, we wander down the garden path with professional gardener, Lizzie Fox from The Rose Press Garden, as she shares her tips for creating an alfresco haven.



— Sow flower seeds such as Cosmos, sunflowers and snapdragons

— Protect new shoots of perennials such as hostas, delphiniums or lupins from slugs and snails (I recommend using wool pellets)

— Continue deadheading spring bulbs and bedding plants so they don't waste energy setting seed. By deadheading the bulbs, the energy will go back into the bulbs for an extra special display next year. If you have bulbs planted in grass, don't be tempted to mow the grass until the bulbs die back



— Plant out sweet peas into their final position. Ensure you prepare the ground well and ensure you 'harden off' your sweet peas for 10 days before you plant out

— Prune hydrangeas, cutting back the old stems back to a healthy bud lower down

— Now is a good time to divide and move perennials before the hot weather. Dig a large area around the roots and break into smaller plants. Ensure you give them a good water once you've planted them

— Check roses for aphids and rub them off before any infestations take hold

— If you have a garden pond, now is a good time to add aquatic plants such as water lilies

Finally, please be careful of frost. Do not plant

— any tender plants until after the final risk of frost (usually in May)



So, it's time to dig out those gardening gloves and embrace the outdoors; you can discover our garden collection and peruse our products for creating your outdoor oasis on gathered-living.com

gl