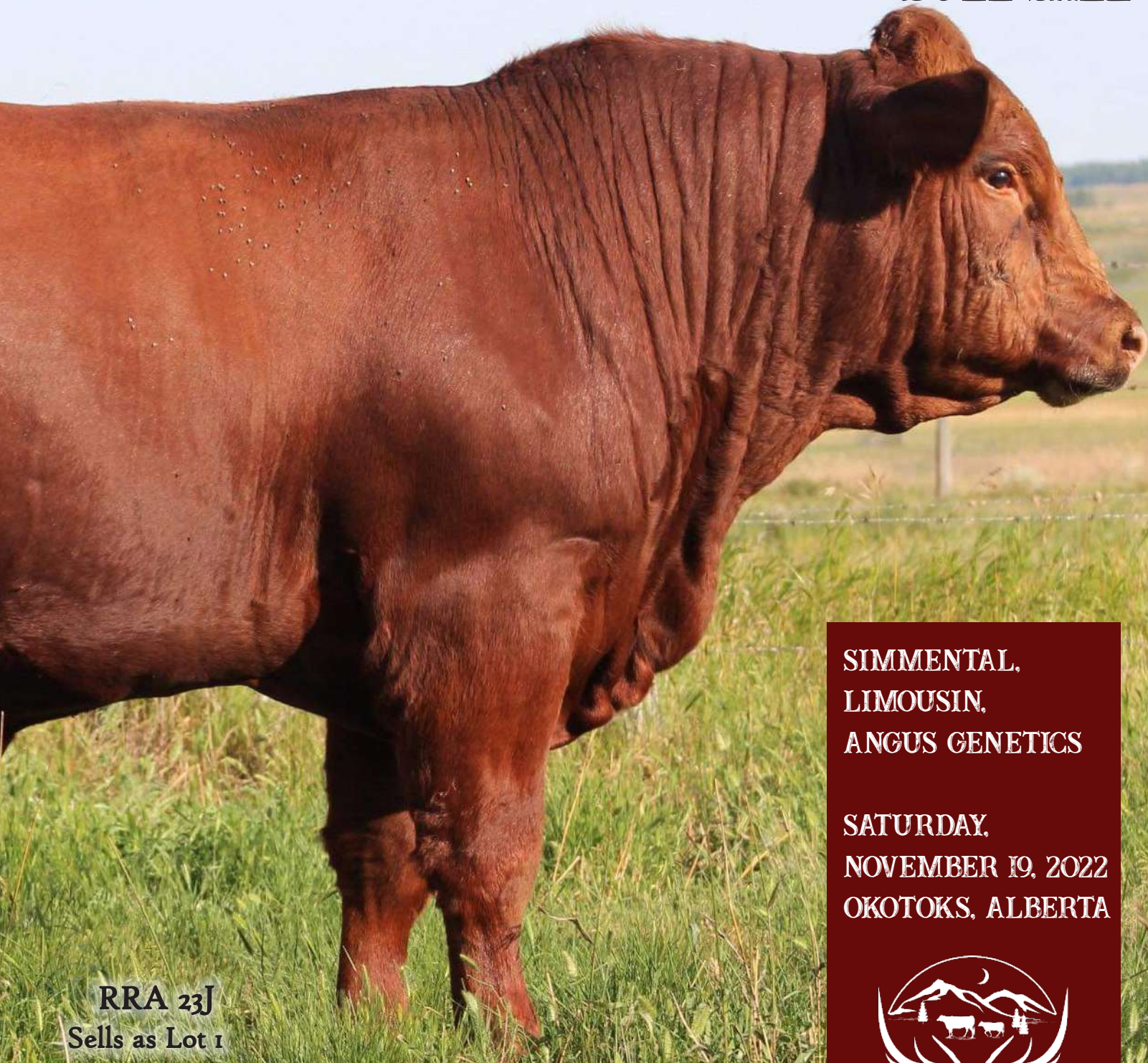


22ND ANNUAL

BEEFMAKER[®]

BULL SALE



RRA 23J
Sells as Lot 1

SIMMENTAL,
LIMOUSIN,
ANGUS GENETICS

SATURDAY,
NOVEMBER 19, 2022
OKOTOKS, ALBERTA



DATA COLLECTION IS OUR SPECIALTY

22ND ANNUAL BEEFMAKER[®] BULL SALE AT TANGLE RIDGE RANCH

SATURDAY, NOVEMBER 19, 2022
AT THE RANCH
5KM WEST OF OKOTOKS, ALBERTA

- 1 - Simmental Herd Sire
- 15 - Simmental Bulls
(from Limousin and Angus base)
- 10 - Limousin Bulls
(from Angus base)
- 3 - Purebred Black Angus Bulls

Several bulls are double registered in both Simmental and Limousin Associations allowing you options to register progeny in both associations.

- 10 a.m. Cattle on display (coffee & pastries available)
- Noon Complimentary lunch
- 2:00 p.m. Sale starts

Storm date: Sunday, November 20

Sale day phone: (403) 312-9799
Brekell Otto: (403) 321-9799
Brenda Otto: (403) 818-3142
Dallas Otto: (403) 869-4833
Kelly Otto: (403) 888-3323

Randy Bollum - Herd consultant
(403) 540-5949

Cheryl Brown - Stockmens Insurance
(403) 869-4833

Dan Skeels - Auctioneer
(403) 783-1217

Rod McLeod - Ringman
(403) 540-7986

Darryl Snider - Ringman
(780) 385-5561

TANGLE RIDGE RANCH
32011-354 AVE W
OKOTOKS, ALBERTA

INDIVIDUAL ANIMAL FEED EFFICIENCY DATA (RFI) AND FEED : GAIN RATIO

As leaders in the field of testing for feed efficiency, this is our 19th consecutive year of measuring individual animal Residual Feed Intake (RFI) or Net Feed Efficiency and Straight Feed Conversion. All TRR bulls have individual animal net feed efficiency and straight feed conversion data. This is also our 15th year for testing our complete heifer crop.

ALL LONG YEARLINGS

Virile bulls ready to cover lots of ground. They were "coasted" through their first winter, you can treat them rougher than spring yearling calves, and are slowly developed with lots of exercise plus they haven't seen as much feed as full two year olds elsewhere. They aren't picked over.

PERFORMANCE TESTED & CARCASS ULTRASOUND MEASURED

More years of data in more traits than anyone in the Canadian beef seedstock business.

BOARD UNTIL MARCH 1ST

Ideally your new bull should go to his new home, settle into your feeding program, and get mixed in with the other bulls he will be working with. If you just don't have a spot for him, we can winter them here up to March 1st. We'll care for your purchases for a nominal \$10 per day. We suggest you purchase insurance.

DELIVERY ASSISTANCE.

You tell us when and where you want them, and we'll get it done for you. Don't worry - we'll do the legwork and get your bulls home at the lowest cost possible.

GUARANTEED HOMOZYGOUS POLLED BULLS

All are homozygous polled. Homozygous polled cattle will genetically dehorn every calf, even from horned cows.

EASY CALVING IDENTIFIED BLOODLINES

We know what our bulls, their siblings and their cow families have done in the past - no unpleasant surprises.

GUARANTEED HOMOZYGOUS BLACK BULLS

We've designed them and paid the tab to DNA test them so you'll be guaranteed a uniform all-black* calf crop from non-diluter red or black cows. DNA tests that were requested to confirm were done at Neogen (formerly Igenity). Our bulls are free of the spotting and diluter genes.

NONE HELD BACK

All our bulls are offered, with everyone getting fair chance to own them. None pre-sold, none consigned to other events, and none held back for only our own use.

PROVEN SIRE GROUPS

Not only do we have sire groups, but there are also other sets of closely related bulls to sire uniform calf crops in multiple bull cow herds.

DNA MARKER TESTING FOR MARBLING, LEPTIN, TENDERNESS & OTHER CARCASS TRAITS.

Several sires, dams, plus all our sale bulls for the past 15 years have had DNA Marker Profiles or individual trait DNA tests done helping us identify indicators of superior genetics for these carcass and meat quality traits. Angus bulls have full Angus GS genomic profiles.

WELCOME FROM TANGLE RIDGE RANCH



(from left to right) - Makenna, Taylor, Brekell, Brenda, Kelly, Graham, Derek, Dallas, Rodolfo

Welcome to the Tangle Ridge Ranch inaugural bull sale. We are the Otto family and we are honoured to be carrying on the legacy of the "Beefmaker" bull sale, which is currently in its 22nd year.

A few years ago our family knew that it was time to make our dreams become reality. We had raised our 4 children in the country on smaller farms and acreages with plenty of horses and farm critters in tow, yet we always had the dream of expansion into crops and cattle.

In a nutshell... we finally decided to get the ball rolling! After viewing countless properties, we were fortunate enough to purchase our ranch in the early Spring of 2021. This land was formerly known as the 'Bar Pipe Ranch' and was recognized as a World-class Purebred Hereford operation, owned and operated by the Cross family.

Before the ink was dry on the realtor documents, we then set our sights on the fun part...purchasing the cattle! Thanks to Virgil and Emily Lowe, we were introduced to Randy and Rhonda Bollum of Airdrie AB. The R & R Acres herd was very well known for its superior cattle genetics and came with decades of research and data collection, so it just made sense to us that this was the direction we would take.

Now here we are, a year and a half later, and a 'whole lotta' growing pains under our belts! Our family would like to say THANK YOU for taking the time to view our first catalogue and formally invite you to our live event on Saturday, Nov 19th.

The viewing pens will be opening at 10 am. This sale will not be found on the internet, however if any one of you are unable to attend and wish to bid, please reach out to us to arrange a pre-sale viewing of the bulls. We can then connect you with a sales representative.

In our 3 breed sale, we are pleased to be offering 23 of our 'J' bulls (none held back) along with a registered Simmental proven herd sire "19F."

We are looking forward to seeing some new faces and meeting our future customers at our 2022 Beefmaker Bull Sale.

Sincerely,
The Otto Family



The "Beefmaker" Bull Sale continues with its 22nd Annual event- only this time with new ownership.

If you haven't already heard, we're pleased to announce that the Otto Family has purchased the R & R Acres herd and we're happy with their desire to not only continue the program, but to further enhance the unique breeding program our family has designed.

Our commitment to you has always been DISCIPLINE and PROVEN GENETICS BACKED BY DATA that creates VALUE - your route to long-term success.

Throughout this sale book, as well as in the future sale offerings, look for the data, resources, information and advantages we offer you. As your partner in long-term success, we strive to provide you more VALUE through a FUTURISTIC DISCIPLINED PLAN and PROVEN GENETICS that we have searched the world for from these breeds.

Let's translate this into matching the correct bulls with your cowherd, management and market to achieve your sequence to success.

Randy & Rhonda Bollum
R & R Acres
Airdrie, Alberta



WHY USE A TANGLE RIDGE RANCH BULL?

1. Data collection is our specialty

We do all we can to design bulls that are a predictable package to help increase your profit and eliminate your problems.

No other beef seedstock supplier in North America has been supplying all the data we have.

- Individual Animal Feed Efficiency - our entire bull calf crop, for the past 19 years and also all the heifers for the past 15 years
- Igenity DNA Tenderness Score
- Carcass Ultrasound Scans
- Homozygous Polled Status
- Coat Color Status
- Accurate, complete performance data
- Superior Docility EPDs
- Complete EPDs with accuracies
- Semen tested - ready to work
- Actual gestation lengths
- We measure every calf for 18 traits before the top end is offered as a breeding bull
- Many years of DNA tests for Leptin (associated with growth, fat deposition, and marbling)
- Many years of DNA tests for PMCH (associated with tenderness and marbling)
- Tenderness DNA tests

2. Long yearling bulls

These bulls will handle more cows than hard fed yearlings. We evaluate our bulls more intensely than others for performance, feed efficiency, structure and docility with our goal of providing sound, user-friendly bulls. They have been slowly developed to last for years, just like their heifer mates retained in our herd that can produce well into their teens.

3. Superior proven genetics

All breeds are researched and cattle of all kinds will be up-to-date in our search for superior, proven genetics to incorporate into the progression of the Tangle Ridge Ranch herd. We aim to be a leader in beef genetics - knowing what is needed in the beef industry's future, not only what is happening today. It has been interesting to see other prominent seedstock suppliers finally doing what we did 15-20 years ago.

4. Whole Herd Enrollment

We report performance data on our entire calf crops to the breed associations in an attempt to enhance the accuracy of our EPDs and optimize the information you can use to help select your seedstock. We print all the EPD's and accuracies.

5. We've invested heavily into the latest technology

To do the best job in designing beef cattle that increase profitability and sustainability, we use the facts.

As beef industry leaders in gathering useful data, we've spent a lot of time, effort and dedication to first learn about new methods of identifying the differences in cattle. We then spent considerable money over the past years in using the GrowSafe feed efficiency test system, DNA tests, Igenity DNA profiles, etc. to compile this data and stack the pedigrees generation after generation with the superior genetics and also eliminate the ones that don't work. Use our information to make more confident choices.

6. Follow the poultry, swine and dairy industries

If we really want to be progressive and futuristic thinking beef seedstock designers, we need to be eyeing the progressive genetic designers of the other protein meat industries - our real competitors. The leaders in the poultry, swine and dairy businesses all use data to make informed decisions - and it works. They continue to make rapid, steady progress every year in feed efficiency, growth rate, meat yield, reducing cost of production, reproduction rate, etc.

7. Docility Is #1

We're proud of the many comments we receive about how calm our bulls are. We stack the pedigrees with only top Docility EPD sires, and it works. Whether they are Limousin, Simmental, or Angus; superior Docility EPDs are essential...and believe me, it's hard to find new sires that are good enough to continue our quest.

8. Seedstock Experience

The Bollum family have been in the seedstock business for over 100 years, so they “see the whole picture” and know what is expected to earn your business and keep it for the long term. Multiple generations of the Bollum’s have been in the cattle industry, including Shorthorns, Limousins, as well as purebred Hampshire hogs. They also have experience owning and operating the Canadian Limousin magazine, promoting and merchandizing other people’s cattle for 20+ years, and now expanding their herd with the “right kind” of Limousin, Simmental and Angus cattle.

9. Preparing for the Future

Our dedication to combine the best traits of the “right kind” of Limousin, Angus and Simmental into our “Beefmaker” Bulls and “Milkmaid” Females while also eliminating the bad traits of these breeds has worked very well. But to maintain our leadership role in designing beef cattle genetics, we are also well into the plan to tackle the “hard-to-measure” traits. The future will reward cattlemen from “pasture to plate” for cattle that can supply necessary traits not only for the cow-calf producer and cattle feeder, but also meet demands of the

packer, retailer and probably most importantly, the consumer who expects a quality eating experience first time, every time and all the time. We are one of the very few in the world that are tackling the genetics to supply superior feed efficiency, adequate marbling with tremendous percent lean meat yield, and genetically influenced superior meat tenderness.

10. All bulls offered at auction

No bulls are sold before our annual bull sale and none are saved for other events. Everyone has an equal chance at our very best, offered at a fair public auction. Price ranges for everyone, but as a whole have been at darn reasonable prices compared to other places. There are always bargains, especially at our sale being one of the very earliest of the bull sale season.

We invite you to either start a positive experience using Tangle Ridge Ranch genetics, or if you have already used our bulls, to continue utilizing our research and data. Join us in improving not only our own herds, but also the beef business as a whole in an attempt to keep consumers eating and enjoying more beef at a reasonable, profitable price.



INDIVIDUAL ANIMAL FEED EFFICIENCY TESTING

22nd group of bulls to complete test

The data is in for the 22nd set of Tangle Ridge Ranch bulls to complete the individual animal feed efficiency trial. All the 2021 born heifers were also feed efficiency tested again this year.

Measuring individual animal feed efficiency is a relatively rare occurrence because of the difficulty in accurately and cost effectively measuring daily feed intake of each animal. By using the feeding bunks and electronic system developed by GrowSafe Systems, continual 24 hour a day monitoring of each cattle's feed consumption is recorded for a 70+ day trial period.

The first set of bulls to use the new machines at Cattleland started their test November 10, 2004 that ran through February 3, 2005. There were several breeds of bulls going through this first round to gather information as to their ability to convert feed to pounds of gain. Bulls were also ultrasound measured for carcass traits upon completion of test.

Since then, the TRR bulls and females have had individual animal feed efficiency tests done on the whole calf crop to get an accurate measure on the whole group.

WHY MEASURE FEED EFFICIENCY?

The cost of feed is second only to fixed costs in importance to the profitability of commercial beef operations. 70-75% of the total dietary energy cost in beef production is used for maintenance, including maintenance of the dam. In addition, a 5% improvement in feed efficiency could have an economic impact four times greater than a 5% improvement in average daily gain.

DEFINING RESIDUAL FEED INTAKE

Net feed efficiency or net feed intake (NFI) or residual feed intake (RFI) is defined as the difference between an animal's actual feed intake and its expected feed requirements for maintenance and growth. Thus, it is the variation in feed intake that remains after the requirements for maintenance and growth have been removed. Like a golf score, a lower value is better and indicates an efficient animal.

Considerable variation exists between individual animals within breeds or genetic strains in RFI. This infers that substantial progress can be made in RFI or feed efficiency since the heritability of the trait is approximately 40%.

THE TRIAL

The main purpose of this trial is to identify feed efficient breeding cattle. Ultimately the efficiency of the cow herd and feeder cattle can be improved to reduce unit costs of production.

THE TANGLE RIDGE RANCH BULLS

TRR is the only bull supplier in Canada that has tested their entire bull calf crops for Net Feed Efficiency for the last 19 years in a row.

USING FEED EFFICIENCY DATA

Use individual animal feed efficiency data in the selection process for purchasing your breeding stock. Dramatic cost savings can be gained with this moderately heritable trait in the feedlot cattle, as well as in the cow herd.

Feed Efficiency Data is calculated in two ways:

- Residual Feed Intake
- Straight Feed to Gain ratio

FEED EFFICIENCY IS REALLY A COW HERD TRAIT... NOT JUST A FEEDLOT TRAIT.



THE TRR BRAND NAMES

ANTR = ANGUS TENDER SMTR = SIMMENTAL TENDER

We continually search the world for proven genetics that qualify for these lines of our cattle. All Angus we have assembled and AI'd to must be in the very top percentile of the breed for Tenderness based on a genomic DNA test. All Simmental AI bulls we have ever used must be in the very top percentile of the breed for Shear Force EPD (measure of tenderness).

Consumers demand a tender beef eating experience - first time, every time and all the time. We are virtually the only seedstock source that is entrenching this futuristic trait into the bulls we sell and use ourselves.



GENOTYPE SELECTION ACCURATELY PREDICTS CATTLE MARKET CHARACTERISTIC

Genotyping is a powerful tool in shaping modern livestock management programs, as a detailed understanding of cattle DNA facilitates practical breeding and feedlot resource allocation strategies. As keen feedlot producers are becoming increasingly more aware of the reliability of genetic profiling when making purchasing decisions, cattle genotyping is an excellent tool to assist breeders in selecting animal traits because such techniques provide an objective measure of livestock market potential.

Leptin affects appetite and metabolism therefore, the different genotypes fatten at different rates. Fat accumulation is expensive. Growth traits are associated with fat accumulation. Carcass fat is a factor in determining yield and quality grade.

PMCH is associated with increased meat tenderness and increased fat.
DNA genomic tests for Leptin and Tenderness were done by Neogen this year.

LEPTIN AND TENDERNESS EXPLAINED

Homozygous favorable

Leptin TT = associated with increased weaning weight, increased rate of fat deposition, increased milk butterfat (cow)

Heterozygous favourable

Leptin CT = intermediate effects

Homozygous unfavourable

Leptin CC = weaker performer in criteria mentioned above

Tenderness DNA Tests

- Genomic measurements of Tenderness were done by Neogen.
- All Angus bulls have had full Angus GS genomic profiles for 18 traits (Tenderness being one of them) that are reported as a top percentile of the Angus breed
- All bulls also have had a Neogen DNA test for Tenderness that is reported on a 1-10 scale with 10 being the most tender

WE ARE TACKLING THE HARD TO MEASURE TRAITS

Feed Efficiency

Our 19 years of experience with individual animal feed efficiency testing has taught us many things, including that there is a huge difference among cattle... and you certainly can not tell them apart just by looking at them!

Feed Efficiency is 40% heritable. This set of bulls is 30% better than industry average.

Use the data to improve your calf crops and your cow herds. Feed efficient cows eat less every day for the 10-15 years that they are in the herd.

Tenderness

Tenderness is one of the consumers' top requirements for an enjoyable eating experience, but nobody else in the seedstock business is doing anything to attain it. We aim to make our beef predictably tender - right from the start - every time.

Longevity

Once you start a replacement heifer in your cow herd, the more years that she produces, the more profitable your cow herd is.

The Tangle Ridge Ranch herd is built around well proven sires that are Breed Trait Leaders for Stayability EPDs (number of years a cow stays in the herd). Many of our cows produce well into their teens.

HOW TO READ CHARTS

R AND R BEEFMAKER SMTR 18J

15/05/2021 | RRA 18J | 1385883 | Homo polled | Black | 88% Simmental | 6% Angus | 6% Limousin

Birthdate
day/month/year

Tattoo

Registration #

Color and polledness are identified as homozygous or heterozygous. If DNA tests for color and polledness were done, the genomics company performing the test is listed in parenthesis eg. Igenity (Igen.).

Actual % Limousin, Simmental, or Angus

BWT 88 Unasst.	Adj. Wwt 598 lbs. Index: 90	Adj. Ywt 1,176 lbs. Index: 96	Yrlg Frame Score 4.8	Tenderness DNA 4 Igenity	Leptin Heterozygous favourable
--------------------------	---------------------------------------	---	--------------------------------	------------------------------------	--

Actual birthweight and calving ease.

Yearling weights are adjusted to a standard 365 day age.

Hip heights taken at a year of age converted to a Beef Improvement Federation universal frame score chart on a 1-10 system where a 10 is the tallest animal.

Neogen DNA tests for Tenderness, 1 to 10 scores with 10 being the most tender.

Weaning weight adjusted to a standard 205 day weight. The index compares this animal to the others in this contemporary group. A 100 index is average. A 110 index is 10% heavier than the group average.

Expected Progeny Differences (EPDs)
from Oct. 12, 2022.

- All EPDs are from the International Limousin or Simmental Genetic Evaluations (BOLT - International Genetic Solutions)
- American Angus Association EPDs apply to lots 22 to 24

EPDs	EPD	EPD Acc.	Top% Rank
CED	12.7	0.29	10
BW	0.2	0.38	5
WW	78.1	0.35	40
YW	111.6	0.36	50
CEM	7.3	0.27	15
Milk	26.0	0.28	60
TotMat	65.1	0.30	60
Stay	20.3	0.19	5
CW	25.3	0.30	60
REA	0.86	0.28	55
FAT	-0.1	0.25	95
MARB	0.31	0.26	1
API	152.1	-	1
TI	84.35	-	0.2
DOC	21.4	0.32	1

Figures in this column indicate the top % of the Limousin, Angus or Simmental breed they rank in. Example: A 20 indicates this bull is in the top 20% of the breed for this trait.

Fall 2022 Sale Bull Photos
Photos of this year's sale bulls were taken on October 4, 2022.

EPD charts for the purebred Angus bulls are from the American Angus Association's data.

EPD charts in blue are Canadian Limousin Association EPDs

Red EPD charts are Canadian Simmental Association EPDs.

Green charts are feed efficiency, performance, and carcass ultrasound data.

Ultrasound Carcass measurements.

- Ribeye areas are square inches per 100 lbs. live wt.
- Backfat is in inches
- Marbling is % - Intramuscular fat (IMF)
- All are official CUP Lab certified

2022 Data	Year Adj.	Index	Rank
Ribeye	1.22	-	13
Backfat	0.3	-	-
Marb.	2.16	-	14
%LMY	62%	-	18 tie

Feed Efficiency and Performance Test

- Residual Feed Intake (RFI) = lbs. feed "dry matter". Lower is better
- Feed Conversion = lbs. dry matter per lb. gain. Lower is better
- Ave. Daily Gain = lb. gain per day. Higher is better

Net Feed Eff (RFI)	-1.67	-	6
Feed Conv	4.71	-	6
ADG	5.52	101	13

Indexes and Ranks

- Indexes and Ranks are within this test group
- Scan data adjusted to 1 year of age
- % Lean Meat Yields and ribeye are not indexed
- A 100 index is average
- A 110 index is 10% above average of the group, etc.
- Net Feed Efficiency and Feed Conversions are not indexed



**2022
Cattle College
Bull**

Best Compilation
of
All Statistical Data



R AND R BEEFMAKER SMTR 23J

17/05/2021 | RRA 23J | CSA-1385868 CLA-4114569 | Homo polled | Red | 75% Simmental | 22% Limousin | 3% Angus

BWT 71 Unasst.	Adj. Wwt 558 lbs. Index: 89	Adj. Ywt 1,246 lbs. Index: 99	Yrlg Frame Score 5.8	Tenderness DNA 3 Igenity	Leptin Heterozygous favourable
--------------------------	---------------------------------------	---	--------------------------------	------------------------------------	--

SIRE: WS ALL ABOARD B80

WS ALLAROUND Z35
WS LITTLE SISTER W37

DAM: R AND R MILKMAID SMTR 7E

WS BEEF MAKER R13
R & R MILKMAID 30Z

- Actual gestation: 277 days
- 2022 "Cattle College" bull - best compilation of statistical data
- His dam's grandsire is one of the top proven 1% most feed efficient bulls in Neogen's (Vytelle) list of most feed efficient bulls tested through their Grow Safe data collection equipment around the world, so his feed efficiency superiority traces back to the original Limousin base
- Dam's EPDs rank her in the top 1-10% of the breed for 11 traits including all 3 calving ease indicators, yearling weight, docility, post weaning gain, carcass weight, ribeye, marbling, and both All Purpose and Terminal Indexes
- Dam had a good 3.58 marbling scan with only .19 inch backfat
- Dam's first calf, as a two year old, was 75 lbs. at birth and indexed 112 at weaning and 115 at yearling
- Granddam, R & R Milkmaid 30Z, is a CLA Elite Dam indicating the superior Angus-based Limousin females we used for the base of our Simmental line
- **We would like to retain a possible Fall use option at Tangle Ridge Ranch**

EPDs	EPD	EPD Acc	Top% Rank
CED	15.2	0.28	2
BW	-1.9	0.37	1
WW	84.4	0.34	20
YW	132.5	0.36	10
CEM	9.0	0.26	4
Milk	23.7	0.27	75
TotMat	65.9	0.29	55
Stay	12.0	0.17	100
CW	42.8	0.29	4
REA	1.35	0.27	1
FAT	-0.1	0.24	75
MARB	0.32	0.26	1
API	138.2	-	2
TI	88.2	-	1
DOC	17.9	0.32	1

EPDs	EPD	EPD Acc	Top% Rank
Gest	-	-	-
CED	14	0.28	4
BW	-1.3	0.38	3
WW	88	0.35	1
YW	138	0.37	1
CEM	8	0.26	10
Milk	24	0.27	40
TotMat	69	-	2
SC	-	-	-
DOC	12	0.33	45
Stay	12	0.18	70
CW	45	0.30	1
REA	1.40	0.27	4
FAT	-0.10	0.23	55
MARB	0.34	0.26	1

2022 Data	Year Adj.	In- dex	Rank
Ribeye	1.24	-	9 tie
Backfat	0.22	-	-
Marb.	2.41	-	7
%LMY	64.6%	-	10 tie

Net Feed Eff (RFI)	-3.68	-	1
Feed Conv	4.31	-	1
ADG	6.04	110	3 tie

#1 Feed to Gain Ratio Bull
#1 Residual Feed Intake Bull
#3 Average Daily Gain Bull
#7 Marbling Bull



R AND R BEEFMAKER SMTR 40J

24/05/2021 | RRA 40J | 1359860 | Homo polled | Red | 75% Simmental | 15% Limousin | 10% Angus

BWT 80 Unasst.	Adj. Wwt 459 lbs. Index: 89	Adj. Ywt 1,038 lbs. Index: 92	Yrlg Frame Score 4.6	Tenderness DNA 7 Igenity	Leptin Heterozygous favourable
-------------------	--------------------------------	----------------------------------	-------------------------	-----------------------------	-----------------------------------

SIRE: WS ALL ABOARD B80

WS ALLAROUND Z35
WS LITTLE SISTER W37

DAM: R AND R MILKMAID SMTR 7D

WS BEEF MAKER R13
R & R MILKMAID 43U

- Actual gestation length: 283 days
- Embryo transplant flush brother to Lot 3
- Flushmate sister to Lots 2 and 3 was 85 lbs. at birth with a short 277 day gestation
- Here's a super calving ease bull that still gains almost 5 lbs. per day on test
- Dam is a moderate framed cow
- Granddam is a CLA Elite Dam

EPDs	EPD	EPD Acc	Top% Rank
CEM	12.5	0.23	10
BW	0.4	0.24	10
WW	88.4	0.24	10
YW	133.7	0.24	10
CEM	9.1	0.20	3
Milk	2.76	0.21	55
TotMat	70.9	0.22	30
Stay	11.3	0.20	100
CW	35.8	0.23	15
REA	1.36	0.22	1
FAT	-0.1	0.23	60
MARB	0.28	0.26	1
API	127.8	-	10
TI	86.62	-	1
DOC	18.1	0.34	1



R & R Beefmaker SMTR 35F
February 2020 "Cattle College" Bull
Maternal brother to lots 2 and 3. He ranked #1 for gain at 5.45 lbs./day, feed conversion at 4.63 : 1lbs., RFI at -2.67, and 67.1% lean meat yield.

2022 Data	Year Adj.	In-dex	Rank
Ribeye	1.25	-	7 tie
Backfat	0.19	-	-
Marb.	2.24	-	13
%LMY	63.8%	-	13

Net Feed Eff (RFI)	0.39	-	14
Feed Conv.	5.01	-	11
ADG	4.94	90	21



R AND R BEEFMAKER SMTR 28J

19/05/2021 | RRA 28J | 1359859 | Homo polled | Red | 75% Simmental | 15% Limousin | 10% Angus

BWT	Adj. Wwt	Adj. Ywt	Yrlg Frame Score	Tenderness DNA	Leptin
88 Unasst.	572 lbs. Index: 111	1,209 lbs. Index: 108	4.3	5 Igenity	-

SIRE: WS ALL ABOARD B80

WS ALLAROUND Z35
WS LITTLE SISTER W37

DAM: R AND R MILKMAID SMTR 7D

WS BEEF MAKER R13
R & R MILKMAID 43U

- Actual gestation length: 278 days
- Embryo transplant flush brother to lot 2
- Cow family is one of our best feed efficiency families in our 19 years of measuring individual animal feed conversion
- Dam's EPDs rank her in the top 1-4% of the Limousin breed for 10 traits, and in the top 1-12% of the Simmental breed for 10 traits
- Granddam, R & R Milkmaid 43U, was a CLA Elite Dam. Also, every one of her calves was superior for feed efficiency no matter what she was bred to
- Lot 3 was a contender for our "Cattle College" Bull Award
- **We would like to retain a possible Fall use option at Tangle Ridge Ranch**

EPDs	EPD	EPD Acc	Top% Rank
CEB	12.5	0.23	10
BW	0.4	0.24	10
WW	88.4	0.24	10
YW	133.7	0.24	10
CEM	9.1	0.20	3
Milk	26.7	0.21	55
TotMat	70.9	0.22	30
Stay	11.3	0.20	100
CW	35.8	0.23	15
REA	1.36	0.22	1
FAT	-0.1	0.23	60
MARB	0.26	0.26	1
API	126.7	-	10
TI	86.13	-	1
DOC	18.1	0.34	1



R and R Beefmaker SMTR 26G
Top % Lean Meat Yield Bull from the November 2020 sale, plus ranked in the top 10 for ribeye, marbling, gain, RFI, and feed to gain ratio. Maternal brother to lots 2 and 3.

R and R Milkmaid SMTR 7D
Donor dam of lots 2 and 3.

2022 Data	Year Adj.	In-dex	Rank
Ribeye	1.33	-	2
Backfat	0.21	-	-
Marb.	1.88	-	17
%LMY	65.1%	-	5

Net Feed Eff (RFI)	-1.07	-	8
Feed Conv	5.02	-	12
ADG	5.27	96	19



R AND R BEEFMAKER SMTR 11J

12/05/2021 | RRA 11J | 1385839 | Homo polled | Homo Black | 75% Simmental | 10% Limousin | 15% Angus

BWT	Adj. Wwt	Adj. Ywt	Yrlg Frame Score	Tenderness DNA	Leptin
76 Unasst.	784 lbs. Index: 125	1,381 lbs. Index: 110	5.0	3 Igenity	Heterozygous favourable

SIRE: HOOK'S BEACON 56B

HOOKS SHEAR FORCE 38K
HOOKS ZAFIRAH 41Z

DAM: R AND R MILKMAID SMTR 24G

CCR COWBOY CUT 5048Z
R AND R MILKMAID SMTR 23B

- Actual gestation length: 281 days
- One of the "long and low" bulls that can be used so many ways
- Dam's EPDs rank her in the top 1-5% of the breed for 9 traits
- This is the only source in Canada for progeny of Hooks Beacon 56B, the highly proven sire of superior calving ease, growth, and marbling
- Perfect for heifers or for Beef-On-Dairy use
- His EPDs rank him in the top 1-3% of the breed for 13 traits
- Linebred to one of the Simmental breed's greatest well-proven, all-around sires, Hook's Shear Force 38K
- **We would like to retain a possible Fall use option at Tangle Ridge Ranch**

EPDs	EPD	EPD Acc	Top% Rank
CE	14.8	0.30	3
BW	-0.6	0.38	3
WW	97.8	0.35	1
YW	148.0	0.36	2
CEM	9.8	0.28	2
Milk	32.3	0.27	30
TotMat	81.2	0.30	3
Stay	21.5	0.18	2
CW	41.8	0.3	5
REA	1.43	0.28	1
FAT	-0.05	0.25	100
MARB	0.48	0.27	1
API	167.1	-	1
TI	98.75	-	1
DOC	16.5	0.28	2



R and R Beefmaker SMTR 36H
Full brother to lot 4 (11J) from our 2021 sale where he ranked #3 for RFI and #10 for feed to gain.



R and R Milkmaid SMTR 23B
Granddam of lot 4 (11J).

2022 Data	Year Adj.	Index	Rank
Ribeye	1.32	-	3 tie
Backfat	0.23	-	-
Marb.	1.69	-	20
%LMY	66.4%	-	2 tie
Net Feed Eff (RFI)	1.23	-	19
Feed Conv.	5.6	-	22
ADG	5.43	99	14



R AND R BEEFMAKER SMTR 20J

17/05/2021 | RRA 20J | CSA-1385836 CLA-4114545 | Homo polled | Homo Black | 88% Simmental | 6% Limousin | 6% Angus

BWT 89 Unasst.	Adj. Wwt 733 lbs. Index: 110	Adj. Ywt 1,263 lbs. Index: 104	Yrlg Frame Score 4.5	Tenderness DNA 4 Igenity	Leptin Heterozygous favourable
-------------------	---------------------------------	-----------------------------------	-------------------------	-----------------------------	-----------------------------------

SIRE: HOOK'S BEACON 56B

HOOKS SHEAR FORCE 38K
HOOKS ZAFIRAH 41Z

DAM: R AND R MILKMAID SMTR 27G

CCR COWBOY CUT 5048Z
R AND R MILKMAID SMTR 74C

- Actual gestation: 285 days
- Double bred to the all-time great well proven multiple trait leader, Hook's Shear Force 38K
- One of the few Hook's Beacon 56B sons in Canada
- First calf dam had an 85 lb. birthweight, indexed 115 at weaning, and 125 at a year
- Optimum cow family. Dam is a full sibling to several females in the herd whose EPDs rank her in the top 1-10% of the breed in 12 traits
- His EPDs rank him in the top 1-10% for 13 traits
- **We would like to retain a possible Fall use option at Tangle Ridge Ranch**

EPDs	EPD	EPD Acc	Top% Rank
CED	14.3	0.32	3
BW	0.1	0.39	5
WW	92.6	0.37	4
YW	137.3	0.38	10
CEM	10.1	0.30	2
Milk	30.5	0.28	35
TotMat	76.8	0.31	10
Stay	21.6	0.18	2
CW	38.0	0.32	10
REA	1.43	0.30	1
FAT	-0.1	0.27	100
MARB	0.48	0.28	1
API	173.6	-	1
TI	98.89	-	1
DOC	16.1	0.30	3

EPDs	EPD	EPD Acc	Top% Rank
Gest	0	0.01	>95
CED	13	0.32	10
BW	0.9	0.40	25
WW	95	0.37	1
YW	139	0.38	1
CEM	9	0.30	3
Milk	31	0.29	3
TotMat	78	-	1
SC	0.94	0.07	10
DOC	17	0.34	4
Stay	22	0.18	1
CW	38	0.31	4
REA	1.45	0.30	3
FAT	-0.05	0.27	>95
MARB	0.51	0.28	1



Hook's Beacon 56B
Sire of lots 4 (11J), lot 5 (20J), and lot 6 (31J). Progeny in Canada only available here. With nearly 1000 progeny in the system, his EPDs rank him in the top 1% of the breed for calving ease, birthweight, maternal calving ease, stayability, ribeye area, marbling, and both indexes.

2022 Data	Year Adj.	In-dex	Rank
Ribeye	1.25	-	7 tie
Backfat	0.2	-	-
Marb.	1.94	-	16
%LMY	65.6%	-	4

Net Feed Eff (RFI)	0.84	-	17
Feed Conv	5.57	-	21
ADG	4.85	89	22



R AND R BEEFMAKER SMTR 3U

20/05/2021 | RRA 3U | CSA-1385871 CLA-4114549 | Homo polled | Homo Black | 75% Simmental | 12% Limousin | 13% Angus

BWT 87 Unasst.	Adj. Wwt 624 lbs. Index: 95	Adj. Ywt 1,302 lbs. Index: 102	Yrlg Frame Score 6.3	Tenderness DNA 5 Igenity	Leptin Homozygous favourable
--------------------------	---------------------------------------	--	--------------------------------	------------------------------------	--

SIRE: HOOK'S BEACON 56B

HOOKS SHEAR FORCE 38K
HOOKS ZAFIRAH 41Z

DAM: R AND R MILKMAID SMTR 30D

CCR COWBOY CUT 5048Z
R AND R MILKMAID SM TNR 52Y

- Actual gestation: 279 days
- A great candidate for a calving ease bull and use for Beef-On-Dairy
- One of the very rare Hook's Beacon 56B progeny in Canada
- His EPDs rank him in the top 1-3% of the breed for 11 traits
- He is actually about 75% + Simmental but gets registered as a halfblood

EPDs	EPD	EPD Acc	Top% Rank
CED	15.2	0.28	2
BW	-0.8	0.37	3
WW	84.2	0.34	20
YW	131.2	0.35	15
CEM	10.5	0.27	1
Milk	31.5	0.28	35
TotMat	73.6	0.30	20
Stay	21.1	0.19	3
CW	44.1	0.30	3
REA	1.20	0.28	1
FAT	-0.05	0.24	100
MARB	0.53	0.26	1
API	164.5	-	1
TI	91.75	-	1
DOC	17.5	0.32	1

EPDs	EPD	EPD Acc	Top% Rank
Gest	0	0.01	>95
CED	14	0.28	4
BW	-0.4	0.37	10
WW	87	0.34	1
YW	135	0.36	1
CEM	10	0.27	1
Milk	32	0.28	2
TotMat	75	-	1
SC	0.90	0.09	10
DOC	18	0.32	2
Stay	21	0.19	1
CW	44	0.29	2
REA	1.23	0.28	25
FAT	-0.04	0.25	>95
MARB	0.55	0.26	1



R & R Milkmaid SMTR 30D
Dam of lot 6 (3U)

2022 Data	Year Adj.	In-dex	Rank
Ribeye	1.15	-	19 tie
Backfat	0.24	-	-
Marb.	2.66	-	5
%LMY	63.9%	-	12
Net Feed Eff (RFI)	0.99	-	18
Feed Conv	5.07	-	13
ADG	6.19	113	3



R AND R BEEFMAKER SMTR 54J

08/06/2021 | RRA 54J | CSA-1385843 CLA-4114548 | Homo polled | Homo Black | 80% Simmental | 10% Limousin | 10% Angus

BWT 84 Unasst.	Adj. Wwt 673 lbs. Index: 103	Adj. Ywt 1,169 lbs. Index: 92	Yrlg Frame Score 5.3	Tenderness DNA 4 Igenity	Leptin Homozygous favourable
-------------------	---------------------------------	----------------------------------	-------------------------	-----------------------------	---------------------------------

SIRE: R AND R LEAD TIME SMTR 18G

HOOK'S BEACON 56B
R AND R MILKMAID SMTR 1D

DAM: R AND R MILKMAID SMTR 2G

HOOK'S BEACON 56B
R AND R MILKMAID 3IE

- Actual gestation: 284 days
- Double bred Hook's Beacon 56B to intensify the superior calving ease, growth, and carcass traits
- Great calving ease and Beef-On-Dairy choice
- Dam's EPDs rank her in the top 1-4% of the breed for 10 traits
- Ranks near the top for multiple traits
- 1 of only 6 bulls in Canada with his superior combination of low birthweight, yearling weight and high marbling EPDs. The other 5 are his sire and other R and R bulls

EPDs	EPD	EPD Acc	Top% Rank
CEB	16.6	0.30	1
BW	-1.5	0.37	1
WW	79.5	0.34	35
YW	114.7	0.35	45
CEM	10.7	0.25	1
Milk	30.5	0.22	35
TotMat	70.3	0.26	35
Stay	19.1	0.14	15
CW	33.4	0.28	25
REA	1.23	0.27	1
FAT	-0.1	0.22	100
MARB	0.47	0.25	1
API	156.9	-	1
TI	87.9	-	1
DOC	17.4	0.25	1

EPDs	EPD	EPD Acc	Top% Rank
Gest	-	-	-
CEB	16	0.30	1
BW	-1.0	0.38	5
WW	82	0.35	2
YW	118	0.36	3
CEM	10	0.25	1
Milk	31	0.21	3
TotMat	72	-1	-
SC	-	-	-
DOC	19	0.32	1
Stay	19	0.14	3
CW	35	0.28	10
REA	1.26	0.28	20
FAT	-0.05	0.23	>95
MARB	0.49	0.25	1



*R and R Lead Time SMTR 18G
Sire of lot 7 (54J).
One of the top bulls from our November 2020 sale,
selected by Semex Canada. Was the #1 All Purpose
Index bull, and the #1 Terminal Index Bull in Canada.*

2022 Data	Year Adj.	Index	Rank
Ribeye	1.23	-	11 tie
Backfat	0.2	-	-
Marb.	2.57	-	6
%LMY	64.6%	-	10 tie
Net Feed Eff (RFI)	-1.2	-	7
Feed Conv	4.91	-	10
ADG	4.64	85	23

A photograph of two black cows in a grassy field under a blue sky with light clouds. The cow in the foreground is looking towards the camera, while the one behind it has its head turned slightly. Both cows have ear tags; the one in the back has a tag with '66' and 'G' visible. The background shows rolling green hills and a fence line.

AT TANGLE RIDGE RANCH, DOCILITY IS ESSENTIAL

We've stacked our pedigrees with multiple generations of proven high docility cattle, and it shows. Thanks to our visitors and customers for your complimentary comments about how calm our cattle are.



R AND R BEEFMAKER SMTR 9J

12/05/2021 | RRA 9J | CSA-1385847 CLA-4114526 | Homo polled | Homo Black | 75% Simmental | 15% Limousin | 10% Angus

BWT 75 Unasst.	Adj. Wwt 760 lbs. Index: 121	Adj. Ywt 1,381 lbs. Index: 110	Yrlg Frame Score 6.2	Tenderness DNA 4 Igenity	Leptin -
--------------------------	--	--	--------------------------------	------------------------------------	--------------------

SIRE: CCR COWBOY CUT 5048Z

TRIPLE C SINGLETARY S3H
CCR MS 4045 TIME 7322T

DAM: R AND R MILKMAID SMTR 12F

JC ENGINEER 102C
R AND R MILKMAID SMTR 18D

- Actual gestation: 272 days
- Dam's EPDs rank her in the top 1-5% of the breed for 10 traits
- Linebred to one of the Simmental breed's greatest well-proven sires, Hook's Shear Force 38K
- Absolute stunning combination of calving ease with top performance and a huge ribeye area scan
- His hard-working, fertile dam weaned him at a 760 adjusted 205 day weight (no creep feed) indexing a hefty 121
- He has a 5.5 score for Promogen (test measuring health, disease resistance, growth, and feed efficiency) - the best score for any Simmental bull ever tested so far (as of October 1, 2022)
- His EPDs rank him in the top 1-10% of the breed for 13 traits
- **We would like to retain a possible Fall use option at Tangle Ridge Ranch**

EPDs	EPD	EPD Acc	Top% Rank
CEB	14.8	0.27	3
BW	0.5	0.36	10
WW	98.2	0.35	1
YW	148.8	0.35	1
CEM	10.6	0.26	1
Milk	30.9	0.25	35
TotMat	80.0	0.28	4
Stay	18.8	0.17	15
CW	39.1	0.29	10
REA	1.23	0.27	1
FAT	-0.1	0.24	95
MARB	0.25	0.25	2
API	147.2	-	1
TI	91.81	-	1
DOC	17.0	0.26	2

EPDs	EPD	EPD Acc	Top% Rank
Gest	-	-	-
CEB	14	0.27	4
BW	1.0	0.38	25
WW	100	0.34	1
YW	149	0.36	1
CEM	10	0.26	1
Milk	31	0.26	3
TotMat	80	-	1
SC	1.10	0.06	3
DOC	15	0.32	15
Stay	19	0.18	3
CW	40	0.29	3
REA	1.25	0.27	20
FAT	-0.07	0.23	95
MARB	0.25	0.25	1



R and R Beefmaker 41H
Maternal brother to lot 8 (9J) in our 2021 sale where he was one of the top sellers, plus ranked #4 for RFI, #5 for feed to gain, was #7 for ADG, and had a high 7 tenderness score.



R and R Milkmaid SMTR 12F
Dam of lot 8 (9J) with him as a baby. She moved up 3 weeks in calving interval between the 1st and 2nd calves.

2022 Data	Year Adj.	In-dex	Rank
Ribeye	1.27	-	6
Backfat	0.28	-	-
Marb.	1.84	-	18
%LMY	64.8%	-	8 tie
Net Feed Eff (RFI)	-0.86	-	11
Feed Conv	5.4	-	19
ADG	5.36	98	16



R AND R BEEFMAKER SMTR 18J

15/05/2021 | RRA 18J | 1385883 | Homo polled | Homo Black | 88% Simmental | 6% Angus | 6% Limousin

BWT 88 Unasst.	Adj. Wwt 598 lbs. Index: 90	Adj. Ywt 1,176 lbs. Index: 96	Yrlg Frame Score 4.8	Tenderness DNA 4 Igenity	Leptin Heterozygous favourable
-------------------	--------------------------------	----------------------------------	-------------------------	-----------------------------	-----------------------------------

SIRE: CCR COWBOY CUT 5048Z

TRIPLE C SINGLETARY S3H
CCR MS 4045 TIME 7322T

DAM: R AND R MILKMAID SMTR 8B

DIKEMANS SURE BET
R AND R MILKMAID SMTR 71Z

- Actual gestation: 275 days
- The foundation Angus-based Limousin cow in this cow family is the dam of our proven herd bull, R & R Beefmaker 3P
- Linebred to one of the Simmental breed's greatest well-proven, all-around sires, Hook's Shear Force 38K
- Fantastic average daily gain of 5.52 lbs. per day with excellent feed to gain ratio of 4.71 to 1
- Calving ease indicator EPDs in the top 5-10% and top 1-2% of the breed for All Purpose and Terminal Indexes
- Full brother to lot 10

EPDs	EPD	EPD Acc	Top% Rank
CE	12.7	0.29	10
BW	0.2	0.38	5
WW	78.1	0.35	40
YW	111.6	0.36	50
CEM	7.3	0.27	15
Milk	26.0	0.28	60
TotMat	65.1	0.30	60
Stay	20.3	0.19	5
CW	25.3	0.30	60
REA	0.86	0.28	55
FAT	-0.1	0.25	95
MARB	0.31	0.26	1
API	152.1	-	1
TI	84.35	-	2
DOC	21.4	0.32	1



R and R Beefmaker SMTR 22H
Full brother to lots 9 (18J) and 10 (19F). One of the popular calving ease bulls from our 2021 sale that ranked #1 for % lean meat yield.

R and R Milkmaid SMTR 8B
Dam of lots 9 (18J) and 10 (19F).

2022 Data	Year Adj.	Index	Rank
Ribeye	1.22	-	13
Backfat	0.3	-	-
Marb.	2.16	-	14
%LMY	62%	-	18 tie

Net Feed Eff (RFI)	-1.67	-	6
Feed Conv	4.71	-	6
ADG	5.52	101	13



R AND R BEEFMAKER SMTR 19F

27/05/2018 | RRA 19F | 1282616 | Homo polled | Homo Black | 88% Simmental | 6% Limousin | 6% Angus

BWT 92 Unasst.	Adj. Wwt 579 lbs. Index: 104	Adj. Ywt 1,048 lbs. Index: 118	Yrlg Frame Score 3.8	Tenderness DNA -	Leptin -
-------------------	---------------------------------	-----------------------------------	-------------------------	---------------------	-------------

SIRE: CCR COWBOY CUT 5048Z

TRIPLE C SINGLETARY S3H
CCR MS 4045 TIME 7322T

DAM: R AND R MILKMAID SMTR 8B

DIKEMANS SURE BET
R AND R MILKMAID SMTR 71Z

- He was a standout all-around bull from January 2020 sale that we bought back and have used him after AI on all our heifers in 2021 and 2022 with great calving ease results and more
- Sons sell as lots 19 (64J), 13 (66J), and 14 (71J)
- A full brother sells as lot 9 (18J)
- In his test group he ranked #1 for ribeye, #2 for % lean meat yield, #3 for marbling, #6 for gain, and #7 for feed to gain
- He and his sons sell
- Pictured at 16 months of age

Proven Herd Sire

EPDs	EPD	EPD Acc	Top% Rank
CED	12.1	0.53	10
BW	0.7	0.58	10
WW	78.7	0.56	40
YW	114.1	0.55	45
CEM	6.8	0.33	15
Milk	26.0	0.28	60
TotMat	65.4	0.37	55
Stay	23.6	0.40	1
CW	26.5	0.48	55
REA	0.94	0.46	30
FAT	-0.1	0.40	100
MARB	0.23	0.47	2
API	153.13	-	1
TI	82.16	-	3
DOC	24.7	0.51	1

EPDs	EPD	EPD Acc	Top% Rank
Gest	-	-	-
CED	12	0.53	20
BW	0.6	0.57	25
WW	75	0.55	15
YW	101	0.56	30
CEM	7	0.33	25
Milk	26	0.27	25
TotMat	64	-	10
SC	-	-	-
DOC	25	0.51	1
Stay	23	0.40	1
CW	18	0.48	60
REA	0.84	0.46	90
FAT	-0.06	0.40	95
MARB	0.25	0.47	2



CCR Cowboy Cut 5048Z
Sire of several bulls in this sale. One of the very elite proven Simmental sires with over 5000 progeny records, but not very many in Canada. His EPDs rank him in the top 1-4% of the breed for weaning, yearling, maternal weaning weight, stayability, docility, carcass weight, marbling, ribeye, shear force (tenderness), and both API and TI indexes.

2022 Data	Year Adj.	In-dex	Rank
Ribeye	1.28	-	1
Backfat	0.09	-	-
Marb.	1.79	-	3
%LMY	66.4%	-	2
Net Feed Eff (RFI)	1.37	-	13
Feed Conv	5.71	-	7
ADG	4.74	-	6



R AND R BEEFMAKER SMTR 30J

20/05/2021 | RRA 30J | CSA-1385864 CLA-4114557 | Homo polled | Homo Black | 75% Simmental | 12% Limousin | 13% Angus

BWT 91 Unasst.	Adj. Wwt 621 lbs. Index: 99	Adj. Ywt 1,314 lbs. Index: 104	Yrlg Frame Score 6	Tenderness DNA 7 Igenity	Leptin Heterozygous favourable
--------------------------	---------------------------------------	--	------------------------------	------------------------------------	--

SIRE: CCR COWBOY CUT 5048Z

TRIPLE C SINGLETARY S3H
CCR MS 4045 TIME 7322T

DAM: R AND R MILKMAID SMTR 4IE

DIKEMANS DOUBLE DOWN 25W
R AND R MILKMAID SM TNR 52Y

- Actual gestation: 279 days
- His dam moved up 50 days in calving date by AI as a first calf heifer
- Dam was 87 lbs. at birth, indexed 114 at weaning, and a whopping 121 at a year. Had a superior 4.34 marbling scan indexing 125

EPDs	EPD	EPD Acc	Top% Rank
CEB	10.7	0.25	20
BW	3.0	0.34	40
WW	90.9	0.32	10
YW	140.1	0.33	4
CEM	6.5	0.23	20
Milk	26.4	0.23	60
TotMat	71.9	0.26	25
Stay	19.2	0.18	15
CW	35.6	0.27	15
REA	0.94	0.25	30
FAT	-0.1	0.21	100
MARB	0.31	0.23	1
API	138.92	-	2
TI	84.71	-	2
DOC	18.0	0.23	1

EPDs	EPD	EPD Acc	Top% Rank
Gest	0	0.01	>95
CEB	11	0.25	20
BW	3.2	0.35	75
WW	93	0.32	1
YW	143	0.33	1
CEM	6	0.23	30
Milk	27	0.24	20
TotMat	74	-	1
SC	1.07	0.09	10
DOC	19	0.29	1
Stay	19	0.18	3
CW	36	0.27	10
REA	0.97	0.25	85
FAT	-0.06	0.21	>95
MARB	0.33	0.23	1



CCR Cowboy Cut 5048Z
Sire of three sale bulls. One of the best well-proven, all-around great sires of the Simmental breed.

2022 Data	Year Adj.	In-dex	Rank
Ribeye	1.24	-	9 tie
Backfat	0.38	-	-
Marb.	2.29	-	11
%LMY	61.4%	-	20 tie
Net Feed Eff (RFI)	2.38	-	22
Feed Conv	5.79	-	24
ADG	5.4	99	15



R & R BEEFMAKER 8J

12/05/2021 | RRA 8J | CXM-4114573 | Homo polled | Homo Black (Igen.) | 50% Simmental | 46% Limousin | 4% Angus

BWT	Adj. Wwt	Adj. Ywt	Yrlg Frame Score	Tenderness DNA	Leptin
84 Unasst.	630 lbs. Index: 106	1,299 lbs. Index: 104	5.5	4 Igenity	Heterozygous favourable

SIRE: WS PROCLAMATION E2O2

CCR COWBOY CUT 5048Z
WS MISS SUGAR C1

DAM: R & R MILKMAID 8E

R & R BEEFMAKER 21B
R & R MILKMAID 5P

- Actual gestation: 281 Days
- Outcross proven pedigree for Limousin breeders on the sire's side, for Simmental breeders on the Dam's side
- Sired by one of the great, well proven Simmental bulls of the breed, WS Proclamation E2o2, whose thousands of progeny rank him in the top 1% of the breed for weaning weight, yearling weight, total maternal, docility, carcass weight, marbling, all purpose index and terminal index - plus being in the top 10% for calving ease and low birthweight
- Granddam, R & R Milkmaid 5P, produced here until age 15 including several of our top gaining and top selling sons in our bull sales
- Dam's calving interval is an amazing 345 days
- Top end performance ratios for birthweight, weaning weight, yearling weight as well as marbling
- Registered in the Canadian Limousin Association but can also be in the Canadian Simmental Association
- Limousin EPDs in the top 1% for 6 traits

EPDs	EPD	EPD Acc	Top% Rank
Gest	-	-	-
CED	12	0.21	15
BW	1.2	0.34	30
WW	90	0.30	1
YW	136	0.32	1
CEM	8	0.19	10
Milk	30	0.20	5
TotMat	76	-	1
SC	-	-	-
DOC	20	0.28	1
Stay	18	0.15	10
CW	46	0.24	1
REA	0.88	0.22	95
FAT	-0.06	0.17	>95
MARB	0.30	0.19	1



WS Proclamation E2o2
Sire of lot 12.

With over 500 progeny in the Simmental database, his offspring rank his EPDs in the top 1-4% of the breed for weaning, yearling, milk, maternal weaning weight, docility, carcass weight, marbling, All Purpose Index, Terminal Index, plus top 15% for gain and Shear Force (tenderness).

2022 Data	Year Adj.	In- dex	Rank
Ribeye	1.15	-	19 tie
Backfat	0.24	-	-
Marb.	2.38	-	8
%LMY	63.3%	-	15
Net Feed Eff (RFI)	2.59	-	23
Feed Conv	5.52	-	20
ADG	5.79	106	8



R & R BEEFMAKER 66J

16/06/2021 | RRA 66J | 4114533 | Homo polled | Homo Black | 50% Simmental | 22% Limousin | 28% Angus

BWT 81 Unasst.	Adj. Wwt 572 lbs. Index: 96	Adj. Ywt 1,210lbs. Index 101	Yrlg Frame Score 4.9	Tenderness DNA 6 Igenity	Leptin Heterozygous favourable
-------------------	--------------------------------	---------------------------------	-------------------------	-----------------------------	-----------------------------------

SIRE: R AND R BEEFMAKER SMTR 19F

CCR COWBOY CUT 5048Z
R AND R MILKMAID SMTR 8B

DAM: R & R MILKMAID 14F

G A R PROPHET
R & R MILKMAID 19Y

- Actual gestation length: N/A
- Excellent credentials for calving ease, superior growth, and a moderate frame with expressive muscle - ideal for today's and tomorrow's beef business
- Ideal candidate for use on heifers and Beef-On-Dairy matings
- Maternal brother to last year's "Cattle College" bull selected by Limousin and Simmental breeders 4K Ranches in Texas
- Limousin EPDs rank him in the top 1-10% for 9 traits
- Sire sells as lot 10

EPDs	EPD	EPD Acc	Top% Rank
Gest	-	-	-
CED	14	0.21	4
BW	-0.7	0.32	10
WW	77	0.28	5
YW	114	0.30	5
CEM	10	0.15	1
Milk	27	0.13	20
TotMat	66	-	3
SC	-	-	-
DOC	22	0.26	1
Stay	18	0.14	10
CW	30	0.23	20
REA	0.81	0.21	>95
FAT	-0.04	0.15	>95
MARB	0.31	0.19	1



R & R Beefmaker 17H
2021 "Cattle College" Bull - Maternal brother to lot 13.
Top seller to 4K Ranches in Texas. Ranked at the top for gain, marbling, ribeye, and lean meat yield.

2022 Data	Year Adj.	In- dex	Rank
Ribeye	1.29	-	5
Backfat	0.2	-	-
Marb.	1.8	-	19
%LMY	65%	-	6

Net Feed Eff (RFI)	2.11	-	20
Feed Conv	5.34	-	18
ADG	5.28	97	18



R AND R BEEFMAKER 71J

18/06/2021 | RRA 71J | CSA-1385887 CLA-4114530 | Homo polled | Homo Black | 69% Simmental | 11% Limousin | 20% Angus

BWT 97 Unasst.	Adj. Wwt 771 lbs. Index: 118	Adj. Ywt 1,361 lbs. Index: 107	Yrlg Frame Score 6.5	Tenderness DNA 6 Igenity	Leptin Heterozygous favourable
--------------------------	--	--	--------------------------------	------------------------------------	--

SIRE: R AND R BEEFMAKER SMTR 19F

CCR COWBOY CUT 5048Z
R AND R MILKMAID SMTR 8B

DAM: R AND R MILKMAID SMTR 13Z

TRIPLE C SINGETARY S3H
R & R MILKMAID 53P

- Actual gestation: 290 days
- Well-proven, steady-eddy, 10 year old dam weaned him at a hefty 118 index
- One of the top bulls for RFI and straight Feed Conversion
- Dam indexed 114 at weaning and had good carcass ultrasound scan data of a 3.76 marbling score and a 106 ribeye index
- Dam hasn't missed yet

EPDs	EPD	EPD Acc	Top% Rank
CED	9.1	0.24	35
BW	2.5	0.35	30
WW	86.7	0.31	15
YW	129.5	0.33	15
CEM	5.9	0.19	25
Milk	30.2	0.20	35
TotMat	73.6	0.24	20
Stay	20.0	0.13	10
CW	36.4	0.25	15
REA	1.10	0.24	4
FAT	-0.1	0.19	90
MARB	0.14	0.23	5
API	127.66	-	10
TI	78.67	-	10
DOC	22.9	0.29	1

EPDs	EPD	EPD Acc	Top% Rank
Gest	-	-	-
CED	9	0.24	45
BW	3.0	0.36	70
WW	86	0.32	1
YW	123	0.34	2
CEM	6	0.19	30
Milk	30	0.19	5
TotMat	73	-	1
SC	-	-	-
DOC	23	0.29	1
Stay	21	0.14	1
CW	31	0.24	15
REA	1.19	0.23	35
FAT	-0.08	0.18	90
MARB	0.17	0.20	1



R and R Milkmaid SMTR 13Z
Dam of lot 14 (71J)

2022 Data	Year Adj.	In-dex	Rank
Ribeye	1.08	-	23 tie
Backfat	0.2	-	-
Marb.	1.45	-	21
%LMY	64.8%	-	8 tie

Net Feed Eff (RFI)	-3.09	-	2
Feed Conv	4.61	-	4
ADG	5.62	103	12

**“BEEFMAKER BULLS
AND
“MILKMAID FEMALES**

Where “Pounds Per Acre” Matters

The live, efficient ones make the most net
profit... year after year





R & R BEEFMAKER 13J

14/05/2021 | RRA 13J | 4114521 | Homo polled | Het. Black | 90% Limousin | 10% Angus

BWT 92 Unasst.	Adj. Wwt 632 lbs. Index: 106	Adj. Ywt 1,320 lbs. Index 106	Yrlg Frame Score 6.8	Tenderness DNA 4 Igenity	Leptin Heterozygous favourable
-------------------	---------------------------------	----------------------------------	-------------------------	-----------------------------	-----------------------------------

SIRE: R & R BEEFMAKER 7Z

WULFS XTRACTOR X233X
R & R MILKMAID 43R

DAM: R & R MILKMAID 109U

R & R BEEFMAKER 3P
R & R MILKMAID 61N

- Actual gestation: 283 days
- One of the nice "combination" bulls in the offering
- Dam is CLA Elite Dam out of one of our most feed efficient cow families. She's still producing here at age 14 with an excellent udder, like all the R & R Milkmaid 3P daughters
- Dam was 79 lbs at birth, indexed 105 and 101 at weaning and yearling. Also had a very abundant marbling scan of 5.6 indexing 164
- Sire was one of our top sellers in our 2014 sale going to Hewson Limousin. A full brother sold to GV Limousin in Kansas and his dam sold to Leonard Limousin and Angus in Iowa

EPDs	EPD	EPD Acc	Top% Rank
Gest	-4	0.27	15
CEM	10	0.20	30
BW	2.3	0.35	50
WW	82	0.31	2
YW	134	0.33	1
CEM	6	0.15	30
Milk	23	0.18	50
TotMat	64	-	5
SC	1.25	0.17	2
DOC	18	0.28	2
Stay	13	0.13	60
CW	41	0.22	3
REA	1.24	0.21	25
FAT	-0.10	0.13	55
MARB	-0.09	0.16	10



R & R Milkmaid 109U
Dam of lot 15 (13J)



R & R FE Beefmaker 53R
Maternal brother to R & R Milkmaid 109U. Top RFI and top straight feed conversion bull in our 2007 sale.



R & R Beefmaker 32A
Maternal brother to lot 15. Ranked #3 for average daily gain and #9 for feed conversion in our 2015 sale, selling to Stan Jensen.

2022 Data	Year Adj.	In- dex	Rank
Ribeye	1.2	-	16
Backfat	0.24	-	-
Marb.	1.15	-	23
%LMY	63.7%	-	14

Net Feed Eff (RFI)	-2.1	-	3
Feed Conv.	4.9	-	9
ADG	5.7	104	10



R & R BEEFMAKER 10J

12/05/2021 | RRA 10J | 4114524 | Homo polled | Homo. Black | 45% Limousin | 55% Angus

BWT 69 Unasst.	Adj. Wwt 614 lbs. Index: 103	Adj. Ywt 1,269 lbs. Index 101	Yrlg Frame Score 6.2	Tenderness DNA 4 Igenity	Leptin Homozygous favourable
--------------------------	--	---	--------------------------------	------------------------------------	--

SIRE: G A R PROPHET

C R A BEXTOR 872 5205 608
G A R OBJECTIVE 1885

DAM: R & R MILKMAID 10G

R & R BEEFMAKER 32A
R & R MILKMAID 24Z

- Actual gestation: 281 days
- Sire is GAR Prophet who is a hugely well proven Angus bull in marbling, maternal and growth
- A low 69 lb birthweight bull who gained almost 6 lbs per day on test- his EPD's and performance indexes verify it
- His 2 year old dam is linebred to two of our best proven Limousin sires, HUNT Mr. Jock 44J and R & R Beefmaker 3P, that intensifies the combination of superior growth, docility, marbling and longevity
- Granddam, R & R Milkmaid 24Z, is a CLA Super Elite Dam

EPDs	EPD	EPD Acc	Top% Rank
Gest	-2	0.05	75
CEB	15	0.24	2
BW	-1.5	0.34	3
WW	83	0.31	2
YW	138	0.33	1
CEM	11	0.22	1
Milk	25	0.20	30
TotMat	66	-	3
SC	1.30	0.07	2
DOC	20	0.28	1
Stay	12	0.18	70
CW	52	0.25	1
REA	0.66	0.23	>95
FAT	-0.02	0.18	>95
MARB	0.46	0.20	1



GAR Prophet
Sire of lot 16, 17, and 24

2022 Data	Year Adj.	In- dex	Rank
Ribeye	1.16	-	18
Backfat	0.24	-	-
Marb.	2.07	-	15
%LMY	63.2%	-	16
Net Feed Eff (RFI)	2.26	-	21
Feed Conv	5.25	-	15
ADG	5.91	108	6



**Top
Average
Daily Gain
Bull**



R & R BEEFMAKER 17J

15/05/2021 | RRA 17J | 4114543 | Homo polled | Homo. Black (Igen.) | 45% Limousin | 55% Angus

BWT 90 Unasst.	Adj. Wwt 658 lbs. Index: 110	Adj. Ywt 1,423 lbs. Index 114	Yrlg Frame Score 7.0	Tenderness DNA 5 Igenity	Leptin Heterozygous favourable
--------------------------	--	---	--------------------------------	------------------------------------	--

SIRE: G A R PROPHET

C R A BEXTOR 872 5205 608
G A R OBJECTIVE 1885

DAM: R & R MILKMAID 25F

R & R BEEFMAKER 7Z
R & R MILKMAID 11X

- Actual gestation: 284 days
- Our top gaining bull at an astounding 7.03 lbs per day
- From a moderate 90 lb birthweight to indexing 110 at weaning and 114 for yearling, he's truly in the elite of elite for performance- plus he did it all while maintaining an exceptionally good feed conversion
- One of the best marbling scan bulls in the offering, indexing 159
- He will sire top feedlot cattle, as well as "keeper" heifers
- His first-calf dam weaned him at 48% of her bodyweight- not bad with no creep feed

EPDs	EPD	EPD Acc	Top% Rank
Gest	-2	0.04	90
CED	12	0.21	15
BW	1.7	0.34	40
WW	92	0.30	1
YW	150	0.31	1
CEM	9	0.19	3
Milk	26	0.20	25
TotMat	72	-	1
SC	1.15	0.07	3
DOC	12	0.27	45
Stay	12	0.19	70
CW	52	0.25	1
REA	0.91	0.22	95
FAT	-0.02	0.17	>95
MARB	0.47	0.20	1



*R & R Beefmaker 7Z
Sire of lot 15 (13J) and maternal sire of lot 17 (17J).
One of the top sellers in our 2014 sale to Hewson
Limousin. He is the sire of R & R Beefmaker 116D, a
multiple trait leader in the NALF Proven Sire List.*

2022 Data	Year Adj.	In- dex	Rank
Ribeye	1.18	-	17
Backfat	0.34	-	-
Marb.	2.99	-	3
%LMY	62%	-	18 tie

Net Feed Eff (RFI)	0.66	-	16
Feed Conv	4.85	-	8
ADG	7.03	128	1



**Top
Lean Meat
Yield Bull**



R & R BEEFMAKER 62J

14/06/2021 | RRA 62J | 4114551 | Homo polled | Het. Black | 25% Simmental | 68% Limousin | 7% Angus

BWT 94 Unasst.	Adj. Wwt 550 lbs. Index: 93	Adj. Ywt 1,175 lbs. Index 98	Yrlg Frame Score 5.4	Tenderness DNA 3 Igenity	Leptin -
--------------------------	---------------------------------------	--	--------------------------------	------------------------------------	--------------------

SIRE: R AND R BEEFMAKER SMTR 121D WS BEEF MAKER R13
R AND R MILKMAID 43X

DAM: R & R MILKMAID 34D R & R BEEFMAKER 46Y
R & R MILKMAID 4Z

- Actual gestation: N/A
- Nice combination of calving ease, growth and moderate mature size genetics here
- Black bull that carries a red factor (heterozygous black)
- Sire is R & R Beefmaker SMTR 121D- one of our high performance, super long bodied bulls from our 2018 sale where he ranked #5 for RFI, #6 for Marbling and % Lean Meat Yield and #11 for ADG. He was a whopping 1,445 lbs at a year old, indexing 137

EPDs	EPD	EPD Acc	Top% Rank
Gest	-2	0.05	75
CED	8	0.14	55
BW	3.5	0.32	80
WW	80	0.27	3
YW	124	0.29	2
CEM	5	0.12	45
Milk	22	0.14	60
TotMat	62	-	10
SC	1.55	0.10	1
DOC	19	0.25	1
Stay	14	0.10	45
CW	38	0.17	4
REA	1.24	0.14	25
FAT	-0.10	0.09	55
MARB	-0.04	0.12	5



R and R Beefmaker SMTR 121D
Sire of lot 18 (62J).

2022 Data	Year Adj.	In-dex	Rank
Ribeye	1.32	-	3 tie
Backfat	0.13	-	-
Marb.	1.12	-	25
%LMY	66.6%	-	1

Net Feed Eff (RFI)	-0.53	-	12
Feed Conv	5.33	-	17
ADG	4.58	84	24



R & R BEEFMAKER 64J

15/06/2021 | RRA 64J | 4114531 | Homo polled | Homo. Black (Igen.) | 44% Simmental | 23% Limousin | 33% Angus

BWT 88 Unasst.	Adj. Wwt 612 lbs. Index: 103	Adj. Ywt 1,267 lbs. Index 106	Yrlg Frame Score 5.7	Tenderness DNA 6 Igenity	Leptin Homozygous favourable
--------------------------	--	---	--------------------------------	------------------------------------	--

SIRE: R AND R BEEFMAKER SMTR 19F CCR COWBOY CUT 5048Z
R AND R MILKMAID SMTR 8B

DAM: R & R MILKMAID 14D WR JOURNEY - 1X74
R & R MILKMAID 16Y

- Excellent credentials for superior calving ease plus indexed 103 for weaning weight, 106 for yearling, and 114 index for marbling scan
- Dam is a halfblood Angus calving ease specialist with superior marbling and super udder structure
- Dam's calving interval is 364 days on 4 calves that have marbling scans averaging 108 index

EPDs	EPD	EPD Acc	Top% Rank
Gest	-	-	-
CED	13	0.20	10
BW	-0.3	0.32	10
WW	73	0.29	10
YW	101	0.31	20
CEM	8	0.15	10
Milk	25	0.14	30
TotMat	62	-	10
SC	-	-	-
DOC	19	0.26	1
Stay	20	0.13	2
CW	29	0.22	20
REA	0.83	0.19	>95
FAT	-0.05	0.15	>95
MARB	0.27	0.18	1



R and R Beefmaker SMTR 19F
Sire of lot 19 (64J).

2022 Data	Year Adj.	In- dex	Rank
Ribeye	1.21	-	14 tie
Backfat	0.27	-	-
Marb.	2.27	-	12
%LMY	63%	-	17

Net Feed Eff (RFI)	-0.05	-	13
Feed Conv.	5.09	-	14
ADG	5.34	98	17



R & R BEEFMAKER 46J

26/05/2021 | RRA 46J | 4114564 | Het. polled (Neogen) | Homo. Black (Neogen) | 91% Limousin | 9% Angus

BWT 98 Unasst.	Adj. Wwt 583 lbs. Index: 98	Adj. Ywt 1,191 lbs. Index: 95	Yrlg Frame Score 5.9	Tenderness DNA 4 Igenity	Leptin Heterozygous favourable
-------------------	--------------------------------	----------------------------------	-------------------------	-----------------------------	-----------------------------------

SIRE: R & R BEEFMAKER 116D

R & R BEEFMAKER 7Z
R & R MILKMAID 40W

DAM: R & R MILKMAID 53Y

KAJO RESPONDER 120R
R & R LADY IN BLACK 5N

- Actual gestation: 286 days
- Dam is a CLA Super Elite Dam who is still producing here at 11 years of age with a calving interval of 365 days
- Granddam was a CLA Super Elite Dam
- Dam has performance indexes of 102 and 101 for weaning and yearling weight, plus an excellent marbling scan of 3.31
- Sire is R & R Beefmaker 116D who was our 2018 "Cattle College" Bull- top seller to Leonard Limousin and Angus in Holstein, Iowa. There he has sired many of their top performing bulls and superior feed efficient sire groups. His progeny currently rank him #1 for Ribeye Area, #4 for Yearling Weight, #6 for Weaning Weight, and #4 for Yield Grade EPDs in the NALF Proven Sire List as of May 3, 2022

EPDs	EPD	EPD Acc	Top% Rank
Gest	-3	0.28	45
CED	6	0.24	80
BW	4.1	0.37	90
WW	78	0.33	4
YW	125	0.35	2
CEM	3	0.17	80
Milk	29	0.17	10
TotMat	68	-	2
SC	1.30	0.16	2
DOC	9	0.30	75
Stay	12	0.12	70
CW	36	0.25	10
REA	1.33	0.23	10
FAT	-0.11	0.15	30
MARB	-0.25	0.20	45



R & R Beefmaker 116D
Sire of lot 20 (46J)



R & R Beefmaker 20G
November 2020 "Cattle College" Bull sold to North Slope Farms Inc., Bawlf, AB. Sired by R & R Beefmaker 116D.
REA: 1.46 sq. in. / 100 lbs. live wt. RFI: -2.53. ADG: 4.62 lbs. Feed/Gain: 5.12

2022 Data	Year Adj.	In- dex	Rank
Ribeye	1.23	-	11 tie
Backfat	0.17	-	-
Marb.	1.13	-	24
%LMY	64.9%	-	7

Net Feed Eff (RFI)	0.66	-	16
Feed Conv	5.33	-	16
ADG	5.15	94	20



**Top
Ribeye Area
Bull**



R & R BEEFMAKER 32J

21/05/2021 | RRA 32J | 4114520 | Homo polled | Homo. Black | 76% Limousin | 24% Angus

BWT 91 Unasst.	Adj. Wwt 536 lbs. Index: 90	Adj. Ywt 1,224 lbs. Index: 98	Yrlg Frame Score 6.8	Tenderness DNA 3 Igenity	Leptin Heterozygous favourable
--------------------------	---------------------------------------	---	--------------------------------	------------------------------------	--

SIRE: R & R BEEFMAKER 58W

HUNT MR JOCK 44J
R & R MILKMAID 85P

DAM: GLDN MS LODESTAR 102X

JCL LODESTAR 27L
MAGS 13M

- Actual gestation: 281 days
- Dam is a CLA Elite Dam
- Dam is still producing here at 12 years of age with a totally good udder
- Dam's EPDs rank her in the top 1-4% of the breed for calving ease, yearling weight, scrotal, carcass weight and marbling

EPDs	EPD	EPD Acc	Top% Rank
Gest	-3	0.16	30
CED	10	0.21	30
BW	2.4	0.35	55
WW	71	0.31	15
YW	120	0.33	3
CEM	8	0.15	10
Milk	22	0.16	60
TotMat	57	-	30
SC	1.20	0.16	2
DOC	18	0.29	2
Stay	14	0.13	45
CW	29	0.22	20
REA	1.04	0.20	70
FAT	-0.08	0.14	90
MARB	0.03	0.17	3



R & R Beefmaker 4A
Maternal brother to lot 21 (32J)
Second top seller in our 2020 sale to Hewson Limousin where he ranked #1 for straight feed conversion at 4.51 to 1, #2 for RFI at -1.41, #4 for marbling and #5 for gain.



R & R Beefmaker 18C
2017 "Cattle College" Bull
Sold to Ridge Ranch, Hanna, AB. Maternal brother to lot 21 (32J).
ADG: 4.81 lbs/day.
Feed/Gain: 4.27



R & R Beefmaker 58W
Sire of lot 21 (32J) that was one of our top performing bulls from our 2011 sale, ranked #1 for lean meat yield at 70.7, was #2 for ribeye at a huge 1.66 sq. inches per 100 lbs. live wt., was #6 for feed to gain at an amazing 3.24 to 1, and gained 4.79 lbs. per day. Plus he was homozygous favourable for both leptin (growth) and PMCH (tenderness).



GLDN Ms Lodestar 102X
Dam of lot 21 (32J)
CLA Elite Dam.

2022 Data	Year Adj.	In- dex	Rank
Ribeye	1.34	-	1
Backfat	0.16	-	-
Marb.	1.28	-	22
%LMY	66.4%	-	2 tie
Net Feed Eff (RFI)	-1.72	-	5
Feed Conv	4.78	-	7
ADG	5.63	103	11



R & R BEEFMAKER ANTR 25J



18/05/2021 | 25J | 20334911 | Homo polled | Homozygous Black | Purebred Angus

BWT 84 Unasst.	Adj. Wwt 465lbs. Index: 91	Adj. Ywt 1,179 lbs. Index: 113	Yrlg Frame Score 5.3	Tenderness DNA 4 Igenity	Leptin Homozygous favourable
--------------------------	--------------------------------------	--	--------------------------------	------------------------------------	--

SIRE: BENCHMARK TENDER BEEF II'17

G A R PROPHET
BENCHMARK QUEEN 259'14

DAM: JMB EONA 8I'27

EXAR CONSENSUS H 2735
JMB EONA TG 654

- Actual gestation: 278 days
- His combination of superior stats made him a contender for our "Cattle College" Bull honor
- His sire also sired our 2020 Sale Top Gaining Bull at 5.58 lbs per day plus he ranked #2 for feed conversion at 5.03 lbs of feed per 1 lb of gain
- Dam is a proven calving ease, low birthweight cow whose EPD's are in the top 2 and 10% of the breed for CED and BW, and top 1% for calving ease maternal

2022 Data	Year Adj.	In-dex	Rank
Ribeye	1.1	-	21 Tie
Backfat	.14	-	-
Marb.	3.76	-	2

Net Feed Eff (RFI)	-.94	-	9
Feed Conv	4.7	-	5
ADG	5.78	106	9

Production											Maternal						
CED Acc %	BW Acc %	WW Acc %	YW Acc %	RADG Acc %	DMI Acc %	YH Acc %	SC Acc %	Doc Acc %	Claw Acc %	Angle Acc %	HP Acc %	CEM Acc %	Milk Acc %	MkH Acc %	MW Acc %	MH Acc %	SEN Acc %
+9	+1.2	+67	+119	+24	+1.18	+8	+0.77	+25	+52	+53	+12.2	+15	+30	-	+38	+4	-10
.33	.53	.46	.41	.31	.31	.50	.46	.42	.25	.26	.19	.28	.29	-	.36	.38	-
30%	50%	35%	35%	55%	60%	25%	60%	20%	60%	75%	50%	2%	25%	-	80%	50%	35%

Carcass				Angus-On-Dairy \$Values		\$ Values					
CW Acc %	Marb Acc %	RE Acc %	Fat Acc %	\$AxH	\$AxJ	\$M %	\$W %	\$F %	\$G %	\$B %	\$C %
+42	+1.13	+88	+0.13	148	145	+81	+71	+82	+81	+163	+292
.39	.36	.36	.33	-	-	-	-	-	-	-	-
65%	10%	15%	20%	15%	15%	10%	15%	55%	4%	20%	10%

Angus GS Genomic Top Percentile Rankings within the Angus Breed																		
Trait	CED	BW	WW	YW	DMI	YH	SC	Doc	HP	CEM	Milk	MW	MH	CW	Marb	RE	FAT	Tend
Top %	64	71	39	61	48	30	71	29	33	29	39	83	61	63	13	16	28	2



R & R Beefmaker ANTR 1H
Full brother to R & R Beefmaker ANTR 25J- who ranked #2 for gain, #3 for feed : gain ratio and #2 for marbling in our 2020 sale and sold to Cynderland Farms. His tenderness is top 6% of the Angus breed.



R & R BEEFMAKER ANTR 75J



03/07/2021 | 75J | 20334844 | Homo polled | Homozygous Black | Purebred Angus

BWT 86 Unasst.	Adj. Wwt 479 lbs. Index: 93	Adj. Ywt 1,157 lbs. Index: 110	Yrlg Frame Score 5.5	Tenderness DNA 9 Igenity	Leptin Heterozygous favourable
--------------------------	---------------------------------------	--	--------------------------------	------------------------------------	--

SIRE: R & R BEEFMAKER ANTR 1F

G A R PROACTIVE
GREEN GARDEN BEAU S229

DAM: GREEN GARDEN TARA S102

GARDENS I36 P83
GREEN GARDEN TARA P100

- Actual gestation: N/A
- Dam's EPDs rank her in the top 4% of the breed for marbling, 5% for \$ BEEF, 10% for \$ GRID and \$ Feedlot and 20% for \$ Combined
- Dam had a 5.86 marbling scan with only 0.26 inches of backfat
- His dam consistently produces some of our most feed efficient cattle
- His sire is R & R Beefmaker ANTR 1F who is the only son of GAR Proactive in Canada. In our 2020 sale he ranked #1 for marbling, #2 for gain at 5.25, #4 for feed conversion and #6 for RFI. He is in the top 1% of the breed for Tenderness Genomic Score

2022 Data	Year Adj.	In-dex	Rank
Ribeye	1.1	-	21 Tie
Backfat	.35	-	-
Marb.	2.73	-	4

Net Feed Eff (RFI)	-.91	-	10
Feed Conv.	4.41	-	2
ADG	6.04	110	3 Tie

Production												Maternal					
CED Acc %	BW Acc %	WW Acc %	YW Acc %	RADG Acc %	DMI Acc %	YH Acc %	SC Acc %	Doc Acc %	Claw Acc %	Angle Acc %	HP Acc %	CEM Acc %	Milk Acc %	MkH Acc %	MW Acc %	MH Acc %	\$EN Acc %
+7	+21.6	+65	+125	+29	+90	+1.0	+1.87	+23	+55	+50	+11.4	+13	+23		+52	+5	-13
.30	.51	.43	.38	.29	.29	.48	.48	.39	.21	.21	.17	.24	.27		.35	.37	
45%	60%	40%	25%	20%	40%	10%	4%	30%	75%	60%	60%	10%	75%		65%	40%	40%

Carcass				Angus-On-Dairy \$Values		\$ Values					
CW Acc %	Marb Acc %	RE Acc %	Fat Acc %	\$AxH	\$AxJ	\$M	\$W	\$F	\$G	\$B	\$C
+56	+1.05	+30	+064	121	112	+68	+58	+113	+64	+176	+296
.438	.34	.34	.31								
30%	10%	90%	91%	35%	30%	40%	45%	10%	20%	10%	10%

Angus GS Genomic Top Percentile Rankings within the Angus Breed

Trait	CED	BW	WW	YW	DMI	YH	SC	Doc	HP	CEM	Milk	MW	MH	CW	Marb	RE	FAT	Tend
Top %	85	89	21	9	65	12	7	22	31	30	81	44	23	13	6	73	94	6



R & R Beefmaker ANTR 1F
Sire of lot 23 (75J)



earthsmart solutions



Providing **earth-friendly** solutions
for today's modern growers

Authorized
distributor

humic
growth solutions
Organic Biostimulents • Made in the USA



For more info
and specifications,
scan the QR code

1.866.444.7174

www.earth-smart-solutions.com



**Top
Marbling
Bull**



R & R BEEFMAKER ANTR 12J



13/05/2021 | 12J | 20334879 | Homo polled | Homozygous Black | Purebred Angus

BWT 82 Unasst.	Adj. Wwt 555 lbs. Index: 108	Adj. Ywt 1,168 lbs. Index: 111	Yrlg Frame Score 4.2	Tenderness DNA 4 Igenity	Leptin -
--------------------------	--	--	--------------------------------	------------------------------------	--------------------

SIRE: G A R PROPHET

C R A BEXTOR
G A R OBJECTIVE

DAM: JMB JOETTE 8189

SITZ READY MONEY 668B
JMB JOETTE CAHOOTS 5108

- Actual gestation: 273 days
- Dam has a perfect udder and teats
- Dam indexed 111 at weaning and 120 for marbling
- He is a great all around bull for calving ease, growth and carcass merit- with his actual data and EPDs backed by genomics
- Sire is GAR Prophet- who is one of the Angus breed's most highly proven sires for marbling, growth, docility and maternal

2022 Data	Year Adj.	In-dex	Rank
Ribeye	1.21	-	14 Tie
Backfat	.44	-	-
Marb.	4.26	-	1

Net Feed Eff (RFI)	5.74	-	24
Feed Conv	5.67	-	23
ADG	5.83	107	7

Production											Maternal						
CED Acc %	BW Acc %	WW Acc %	YW Acc %	RADG Acc %	DMI Acc %	YH Acc %	SC Acc %	Doc Acc %	Claw Acc %	Angle Acc %	HP Acc %	CEM Acc %	Milk Acc %	MkH Acc %	MW Acc %	MH Acc %	SEN Acc %
+10	+5	+72	+124	+19	+1.80	+5	+0.80	+25	+51	+51	+9.5	+14	+25		+13	+0	+4
.35	.54	.47	.42	.34	.34	.51	.47	.43	.28	.28	.25	.32	.33		.41	.42	
20%	35%	20%	25%	90%	95%	55%	55%	20%	55%	65%	80%	4%	60%		95%	85%	10%

Carcass				Angus-On-Dairy \$Values		\$ Values					
CW Acc %	Marb Acc %	RE Acc %	Fat Acc %	\$AxH	\$AxJ	\$M	\$W %	\$F	\$G	\$B	\$C
+29	+1.29	+37	+0.71	+113	+88	+92	+77	+56	+75	+130	+261
.43	.39	.39	.36								
90%	3%	85%	95%	40%	45%	2%	10%	95%	10%	60%	30%

Angus GS Genomic Top Percentile Rankings within the Angus Breed

Trait	CED	BW	WW	YW	DMI	YH	SC	Doc	HP	CEM	Milk	MW	MH	CW	Marb	RE	FAT	Tend
Top %	37	39	45	71	84	74	56	14	66	28	72	100	96	91	7	85	98	1



GAR Prophet
Sire of several bulls in this sale.

TOP RANKING BULLS IN ECONOMICALLY IMPORTANT TRAITS

2022 Sale Bulls

The summer 2021 born calves received no creep feed while on their mothers. They were "coasted" through their first winter and went on feed efficiency and performance test in May for a 90 day period where they received a low starter silage ration through yearling age. They returned to Tangle Ridge Ranch where they ran on grass and later in the Fall received free choice round bales of hay and a pelleted "no starch" ration developed by Country Junction Feeds in Wetaskiwin, AB. proven to be best for their gut, feet and longevity.

Calving Ease Indicators

Lowest Actual Birthweights

Lot #	BWT (lbs.)	Rank
16	69	1
1	71	2
8	75	3
4	76	4
2	80	5
13	81	6
24	82	7
22	84	8
12	84	9
7	84	10
23	86	11
6	87	12
9	88	13
3	88	14
19	88	15

Shortest Actual Gestation Length

Lot #	AGL (days)	Rank
8	272	1
24	273	2
9	275	3
1	277	4
22	278	5
3	278	6
11	279	7
6	279	8
12	281	9
16	281	10
4	281	11
21	281	12
15	283	13
2	283	14
17	284	15

Lowest Birthweight EPDs

Lot #	EPD	% Ranking
16	-1.5	3
1	-1.3	3
7	-1	5
13	-0.7	10
4	-0.6	3
6	-0.4	10
19	-0.3	10
9	0.2	5
3	0.4	10
2	0.4	10
10	0.6	25
5	0.9	25
8	1	25
12	1.2	30
17	1.7	40

Best Calving Ease EPDs

Lot #	EPD	% Ranking
7	16	1
16	15	2
4	14.8	3
8	14	4
1	14	4
6	14	4
13	14	4
5	13	10
19	13	10
9	12.7	10
3	12.5	10
2	12.5	10
12	12	15
17	12	15
10	12	20

Gestation Length

Lot #	GEST (days)	% Ranking
15	-4	15
21	-3	30
20	-3	45
16	-2	75
18	-2	75
17	-2	90

Angus and Simmental Influenced bulls do not have Gestation Length EPDs.

Performance Test Rankings

Top Net Feed Efficiency (RFI) Bulls

Lot #	RFI	Rank
1	-3.68	1
14	-3.09	2
15	-2.1	3
21	-1.72	4
9	-1.67	5
7	-1.2	6
3	-1.07	7
22	-0.94	8
23	-0.91	9
8	-0.86	10
18	-0.53	11
19	-0.05	12
2	0.39	13
20	0.66	14
17	0.66	15
5	0.84	16

Top Straight Feed Conversion Bulls (lbs. feed : lb. gain)

Lot #	Feed : Gain	Rank
1	4.31	1
23	4.41	2
14	4.61	3
22	4.7	4
9	4.71	5
21	4.78	6
17	4.85	7
15	4.9	8
7	4.91	9
2	5.01	10
3	5.02	11
6	5.07	12
19	5.09	13
16	5.25	14
20	5.33	15
18	5.33	16

Top Average Daily Gain Bulls (lbs. per day)

Lot #	ADG	Rank
17	7.03	1
6	6.19	2
1	6.04	3 tie
23	6.04	3 tie
16	5.91	5
24	5.83	6
12	5.79	7
22	5.78	8
15	5.7	9
21	5.63	10
14	5.62	11
9	5.52	12
4	5.43	13
11	5.4	14
8	5.36	15
19	5.34	16

Ultrasound Carcass Rankings

Top Ribeye Bulls

Lot #	sq. in/100 lbs live wt.	Rank
21	1.34	1
3	1.33	2
4	1.32	3 tie
18	1.32	3 tie
13	1.29	5
8	1.27	6
5	1.25	7 tie
2	1.25	7 tie
1	1.24	9 tie
11	1.24	9 tie
20	1.23	11 tie
7	1.23	11 tie
9	1.22	13
24	1.21	14 tie
19	1.21	14 tie

Intramuscular Fat (Marbling)

Lot #	% IMF	Rank
24	4.26	1
22	3.76	2
17	2.99	3
23	2.73	4
6	2.66	5
7	2.57	6
1	2.41	7
12	2.38	8
11	2.29	9
19	2.27	10
2	2.24	11
9	2.16	12

% Lean Meat Yield

Lot #	% LMY	Rank
18	66.6	1
4	66.4	2 tie
21	66.4	2 tie
5	65.6	4
3	65.1	5
13	65.0	6
20	64.9	7
8	64.8	8 tie
14	64.8	8 tie
1	64.6	10 tie
7	64.6	10 tie
6	63.9	12

CUP Intramuscular Fat (IMF) Scores

IMF Score	Amt. of Marbling	Canada Grade	USDA Grade
Less than 2.3	Traces	A	Standard
2.3-3.99	Slight	AA	Select
4.00-5.70	Small	AAA	Choice

Bulls will register at least a full degree less of marbling than steers of the same age, genetics and feeding history. Remember, these TRR bulls and heifers have been "coasted" through their first winter and have not seen heavy feed to increase their marbling depositions. Official CUP Lab - Ames, Iowa.

PAST R&R ACRES CATTLE COLLEGE BULLS

Best Compilation of Statistical Data



R&R Beefmaker 99B '16 Cattle College Bull
 R&R Beefmaker 15Y x R&R Milkmaid 4U
 ADG: 4.54 lbs. Rank 1 REA:1.21 sq. in./100 lbs.live wt.
 Marbling: 2.63 RFI: -1.32 Feed Conversion: 5.33
 Bwt: 90 unasst. Wwt.: 654 Ywt.: 1,272
 Purchased by Alvin Miller of Alberta



R&R Beefmaker 5E '19 Cattle College Bull
 R&R Beefmaker 57B x R&R Milkmaid 24Z
 ADG: 5.13 lbs. Rank 5 REA:1.23 sq. in./100 lbs.live wt.
 Marbling: 3.15 RFI: .07 Feed Conversion: 5.76
 Bwt: 78 unasst. Wwt.: 640 Ywt.: 1,242
 Purchased by Marsh Ranches of Alberta



R&R Beefmaker 18C '17 Cattle College Bull
 R&R Beefmaker 11Z x GLDN Ms Lodestar 102X
 ADG: 4.81 lbs. Rank 6 REA:1.36 sq. in./100 lbs.live wt.
 Marbling: 1.96 RFI: -1.17 Feed Conversion: 4.27
 Bwt: NA unasst. Gest.: 281 days Wwt.: 556 Ywt.: 1,296
 Purchased by Ridge Ranch, AB.



R&R Beefmaker SMTR 35F '20 Cattle College Bull
 R&R Beefmaker 18C x R and R Milkmaid SMTR 7D
 ADG: 5.45 lbs. Rank 1 REA:1.11 sq. in./100 lbs.live wt.
 Marbling: 1.54 RFI: -2.67 Feed Conversion: 4.63
 Bwt: 94 unasst. Wwt.: 700 Ywt.: 1,212



R&R Beefmaker 116D '18 Cattle College Bull
 R&R Beefmaker 7Z x R&R Milkmaid 40W
 ADG: 5.39 lbs. Rank 3 REA:1.37 sq. in./100 lbs.live wt.
 Marbling: 1.88 RFI: .15 Feed Conversion: 5.26
 Bwt: 92 unasst. Wwt.: 708 Ywt.: 1,463
 Purchased by Leonard Limousin & Angus of Iowa.



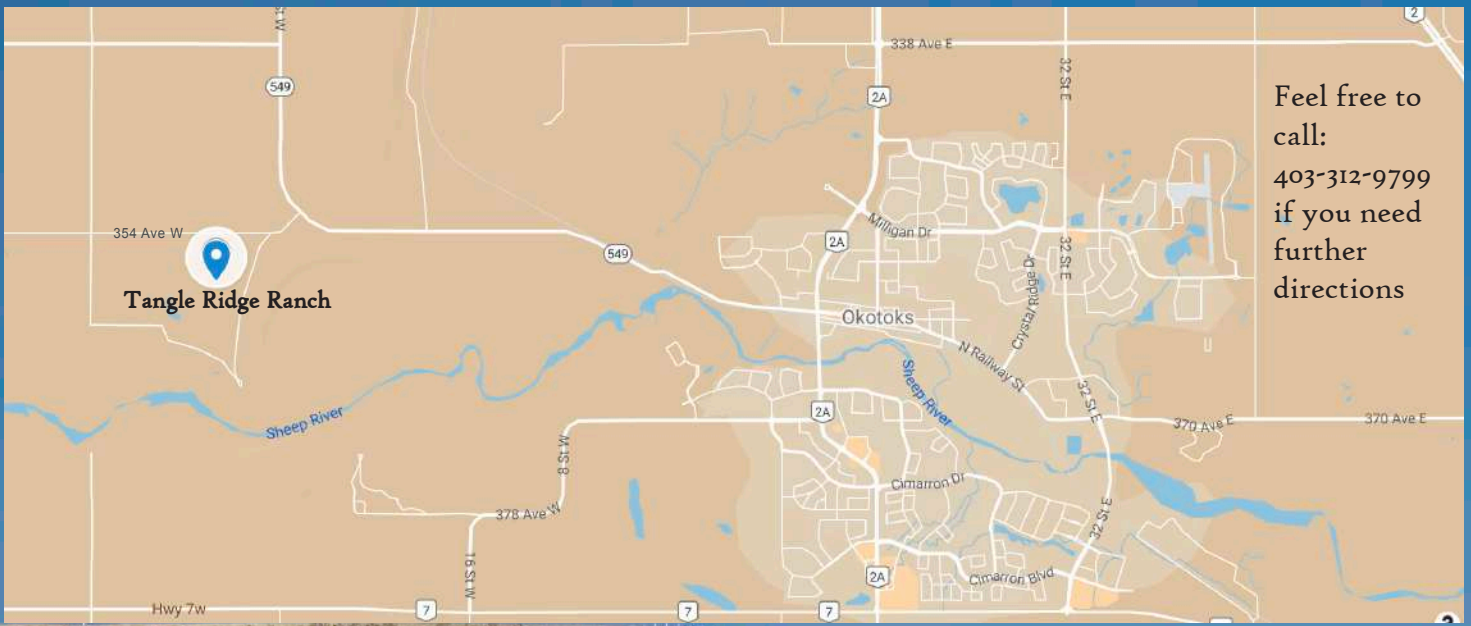
R&R Beefmaker 17H '21 Cattle College Bull
 R&R Beefmaker 3P x R&R Milkmaid 14F
 ADG: 4.4 lbs. Rank 4 REA: 1.47 sq. in./100 lbs. live wt.
 Marbling: 2.18 Gest. length: 283 days
 Bwt: 78 unasst. Wwt: 646 Ywt: 1,143
 Purchased by 4K Limousin of Texas

VERIFIED

THE TANGLE RIDGE RANCH
"BEEFMAKER" BULLS AND
"MILKMAID" FEMALES HAVE
MORE DATA AVAILABLE
THAN ANY OTHER GENETIC
SOURCE IN CANADA.

USE IT WITH CONFIDENCE.





Feel free to call:
403-312-9799
if you need further directions



The *Otto* Family
32011-354 Ave W
Okotoks, Alberta

Brekell 403-312-9799
Brenda 403-818-3142

Dallas 403-869-4833
Kelly 403-888-3323

Email: BOtto@trranch.ca IG: [tangle_ridge_ranch](https://www.instagram.com/tangle_ridge_ranch)