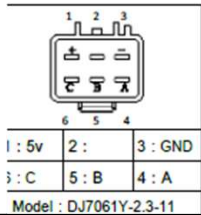
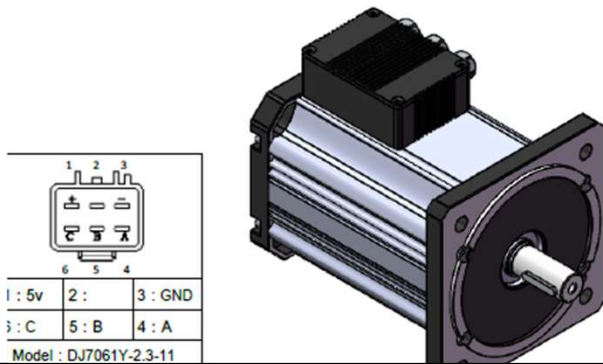
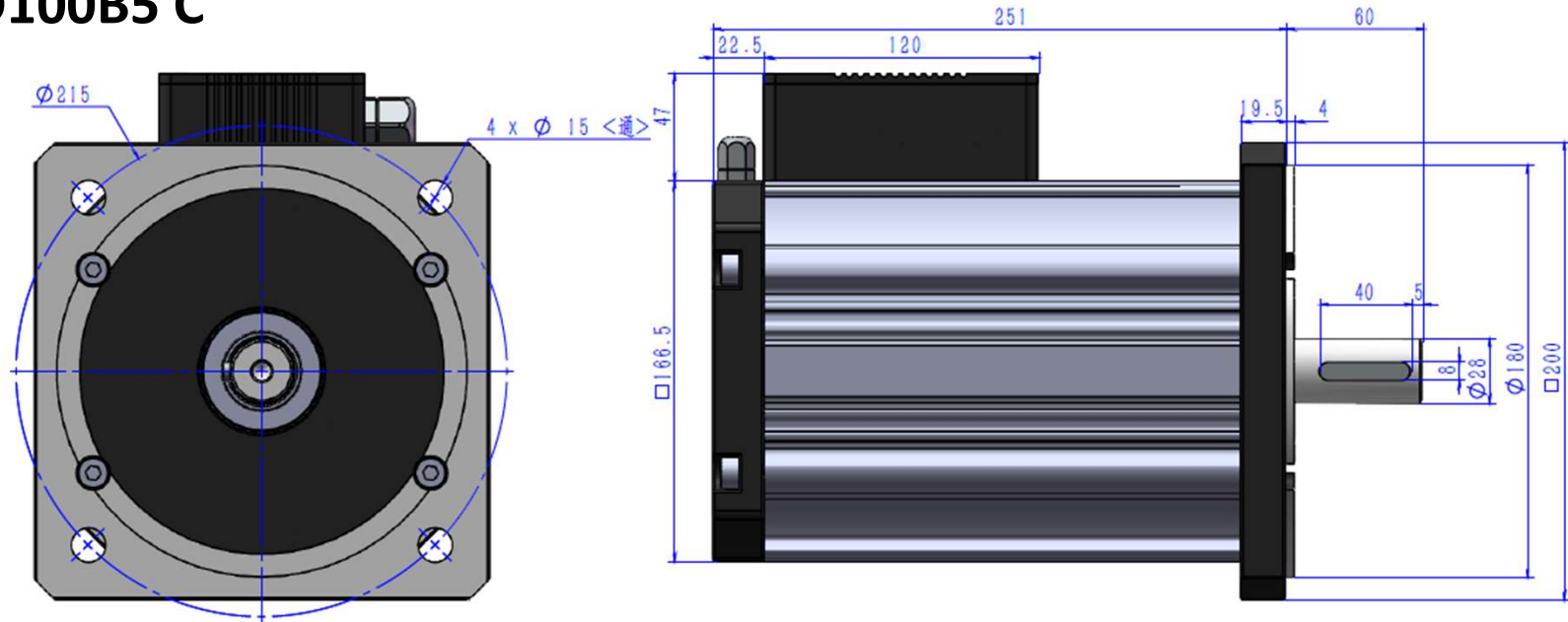


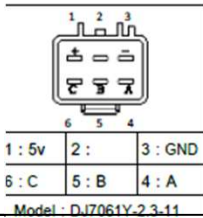
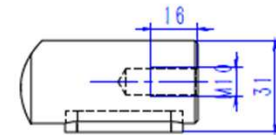
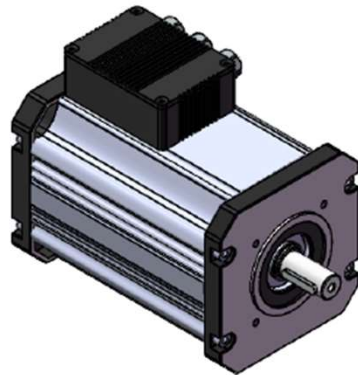
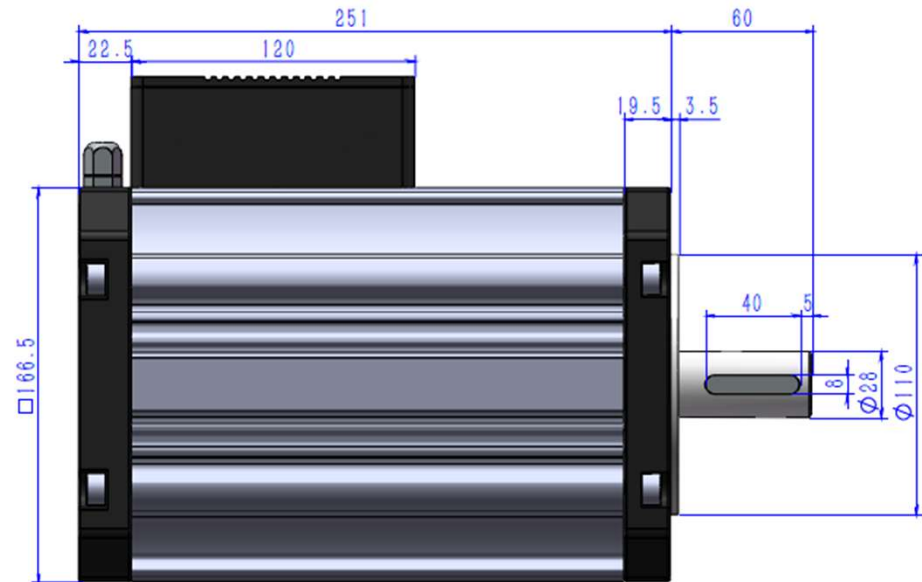
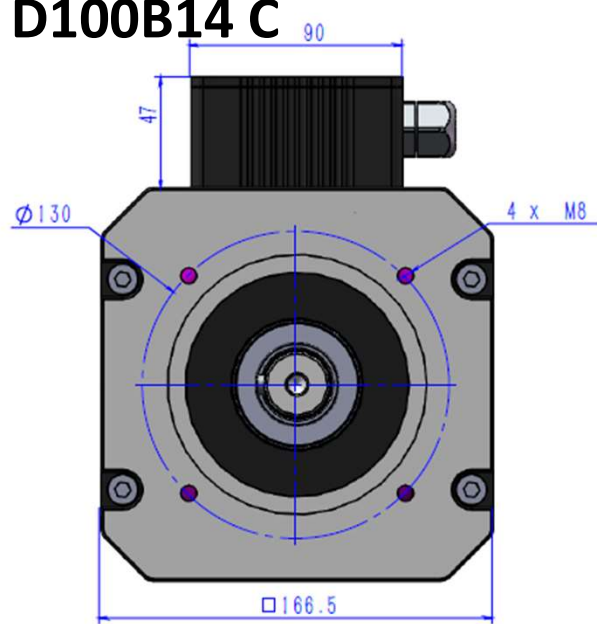
M154S D100B5 C



Description: M154 Brushless DC Motor (Short Housing) with 28mm shaft & 8mm key slot and 215mm PCD flange (D100B5) + Connection Box	Drawing # M154S D100B5 C Revision # 1
	Drawn By: X.Yan Date: 17/04/2020
Notes: To suit M154A, M154B, M154C, M154D range of motors	Approved By: C.Matheou Date: 17/04/2020
	Part Number: M154S D100B5 C



M154S D100B14 C



Description: M154 Brushless DC Motor (Short Housing) with 28mm shaft & 8mm key slot and 130mm PCD flange (D100B14) + Connection Box

Drawing # M154S D100B14 C
Revision # 1

Drawn By: X.Yan
Date: 17/04/2020

Notes: To suit M154A, M154B, M154C, M154D range of motors

Approved By: C.Matheou
Date: 17/04/2020

Part Number: M154S D100B14

