



The Teaching Game-Changer

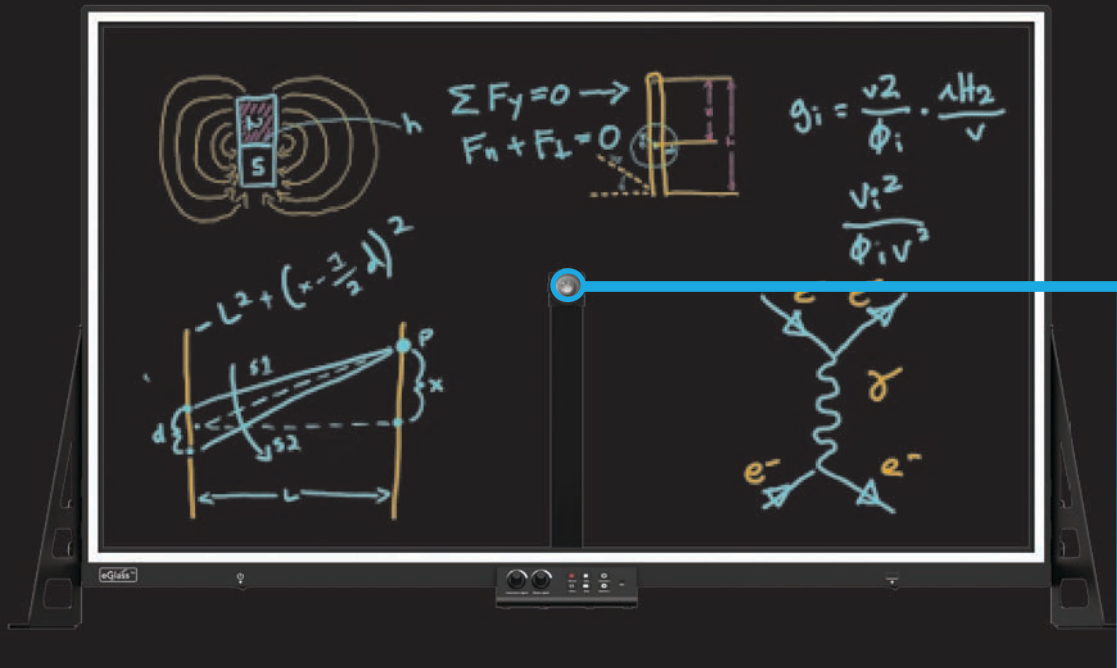
How eGlass can inspire **student engagement** in your setting



What is eGlass?

eGlass is an illuminated glass lightboard with a built-in camera, that allows you to face your students while you teach.





The built-in camera captures your face and glowing ink writing in the same window, and flips the image so your writing reads left-to-right.



eGlass plugs into your computer with a single USB cable. Free software is included.

eGlass doesn't replace your interactive flat panel. The eGlass camera image is mirrored on your classroom display so that every student can clearly see your face and writing.

Research shows...



Students want to see your face

eGlass simulates eye-to-eye contact with each and every student, drawing them into your lesson, and significantly boosting student engagement. This creates a social emotional partnership between you and your students.

According to The Cognitive Theory of Multimedia Learning (CTML), “when the learner feels social partnership with the instructor, the learner will exert more effort to understand what the instructor is saying, which results in better learning outcomes” (Mayer, 2017).

eGlass not only keeps your students engaged, but also contributes to their Social & Emotional Learning (SEL).

The Cognitive Theory of Multimedia Learning (CTML), Mayer, 2005; Mayer, Heiser, & Lonn, 2001; Mayer & Moreno, 2003

eGlass makes learning easier

According to Cognitive Load Theory (CLT), students' working memory is only able to hold a small amount of information at any one time (Sweller, 1988). When a teacher turns their back to write on a whiteboard or interactive display, new challenges get introduced that load:

(The Cambridge Handbook of Multimedia Learning, 2005)

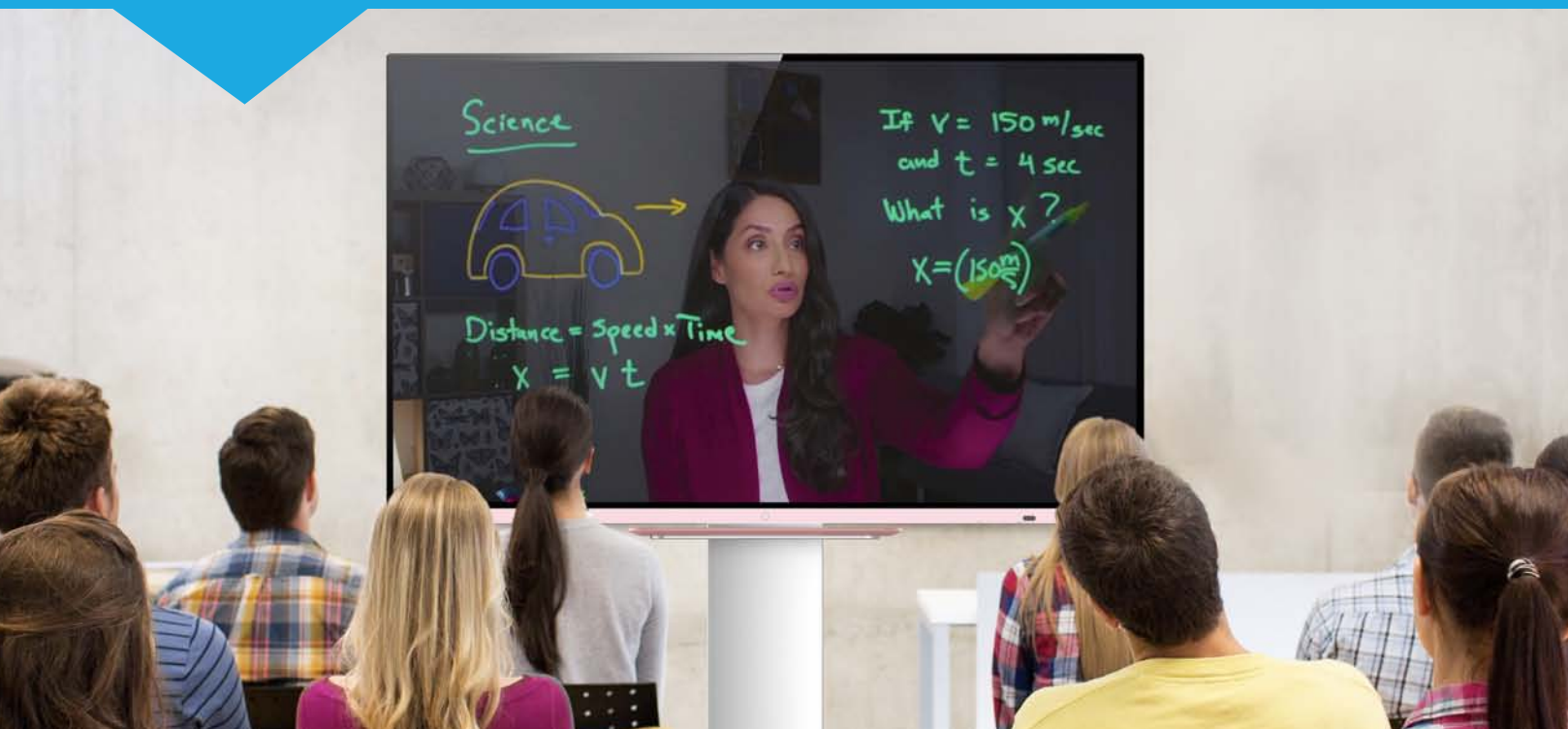
Without eGlass

Teacher turning their back
Teacher blocking writing
Students can't see what the teacher is looking at on the board
Students can't see the teacher's facial expressions



With eGlass

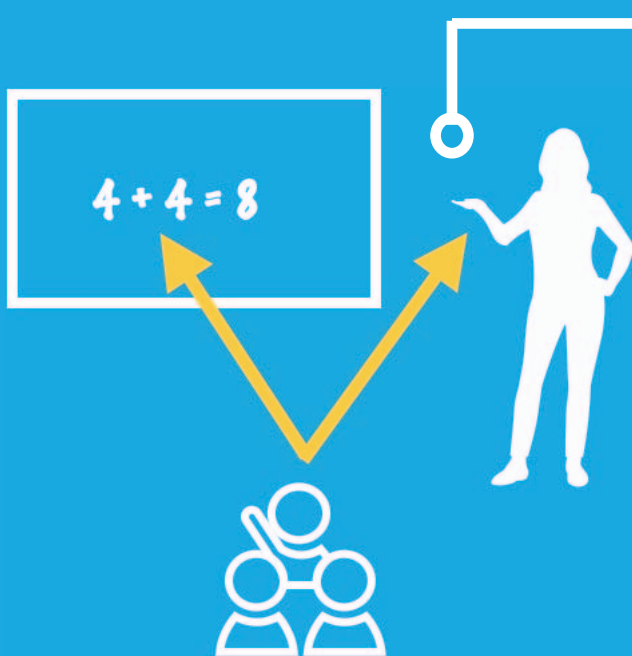
Teacher facing students
Not blocking writing
Students can see exactly where the teacher is looking
Students can see the teacher's facial expressions



and solves the “split attention” problem.

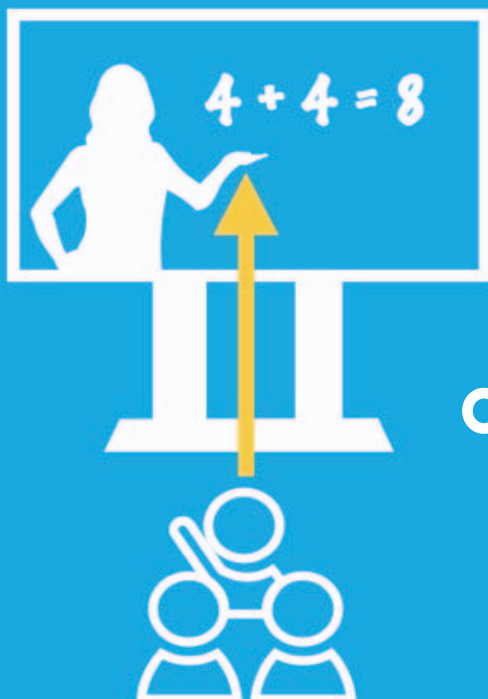
Instructional Split Attention occurs when learners are required to split their attention between several sources of physically disparate information (like a lecturer and their whiteboard). To avoid this, sources of information should be physically and temporally integrated, reducing students’ extraneous working memory load and freeing up mental resources for learning.

(The Cambridge Handbook of Multimedia Learning, 2005)



Divided Attention

Students have to split their attention between the board and the teacher, increases cognitive workload.

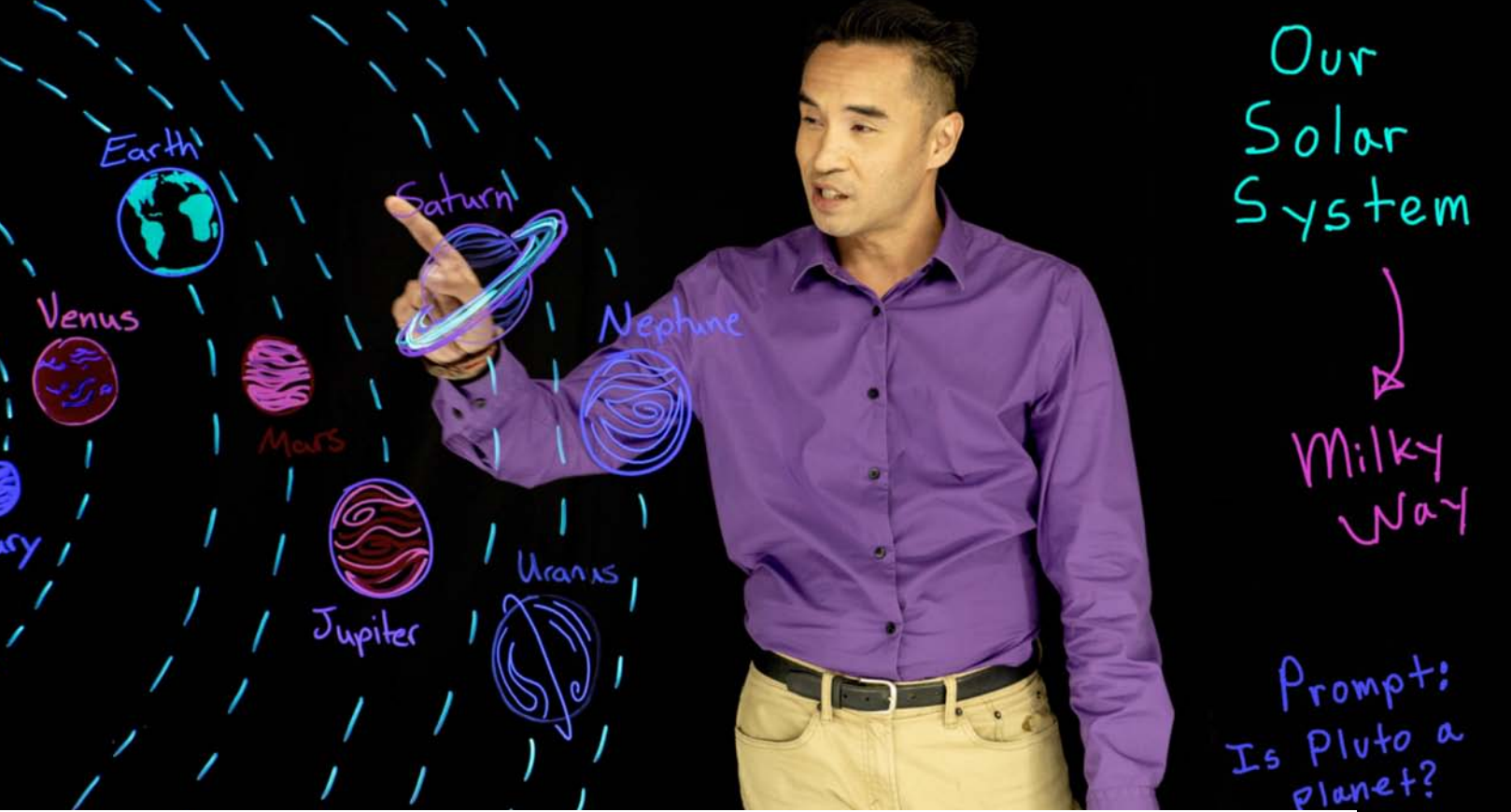


Converged Attention

The teacher’s face and writing is combined, eliminating the need to split attention between two sources.

eGlass reduces the burden on working memory by combining auditory and visual information in an engaging way, better converting working memory into long-term memory, which is the holy grail of building knowledge.

With eGlass, students will spend less time processing information, and more time building knowledge.



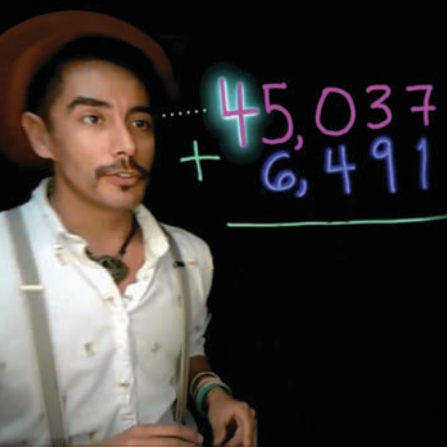
Enable essential non-verbal learning cues...

When students can see your face as you're teaching, they have the ability to follow your gaze and see precisely what you're looking at. Plus, you can also use gestures more effectively.

According to the **Signaling (or Cuing) Principle**, multimedia learning materials are more effective when cues are added that guide learners' attention to the relevant elements of the material.

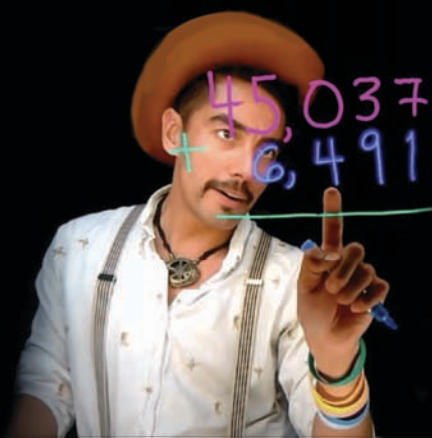
Gaze

Students will follow your eyes to see what you're looking at



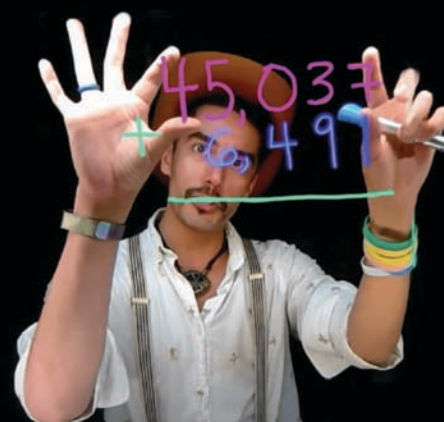
Pointing

Combined with your gaze, pointing further directs attention



Gesturing

Or use physical tools (like a protractor) in conjunction with your drawings





...and never turn your back again.

Classroom management just got a whole lot easier.

Use eGlass at the front of the room to see your students' reactions and gauge their understanding.

Or setup eGlass behind your students, and you'll (literally) have eyes in the back of your classroom.





Learning with eGlass has no distance...

eGlass is the perfect hybrid tool to provide a front-row experience to any student, no matter the distance. Thanks to its built-in camera and microphone, eGlass can be used synchronously or asynchronously - in-class or online. Whether that be live or remote teaching, pre-recorded lessons, tutorials and more. eGlass is fully compatible with all video conferencing platforms making for endless teaching opportunities.

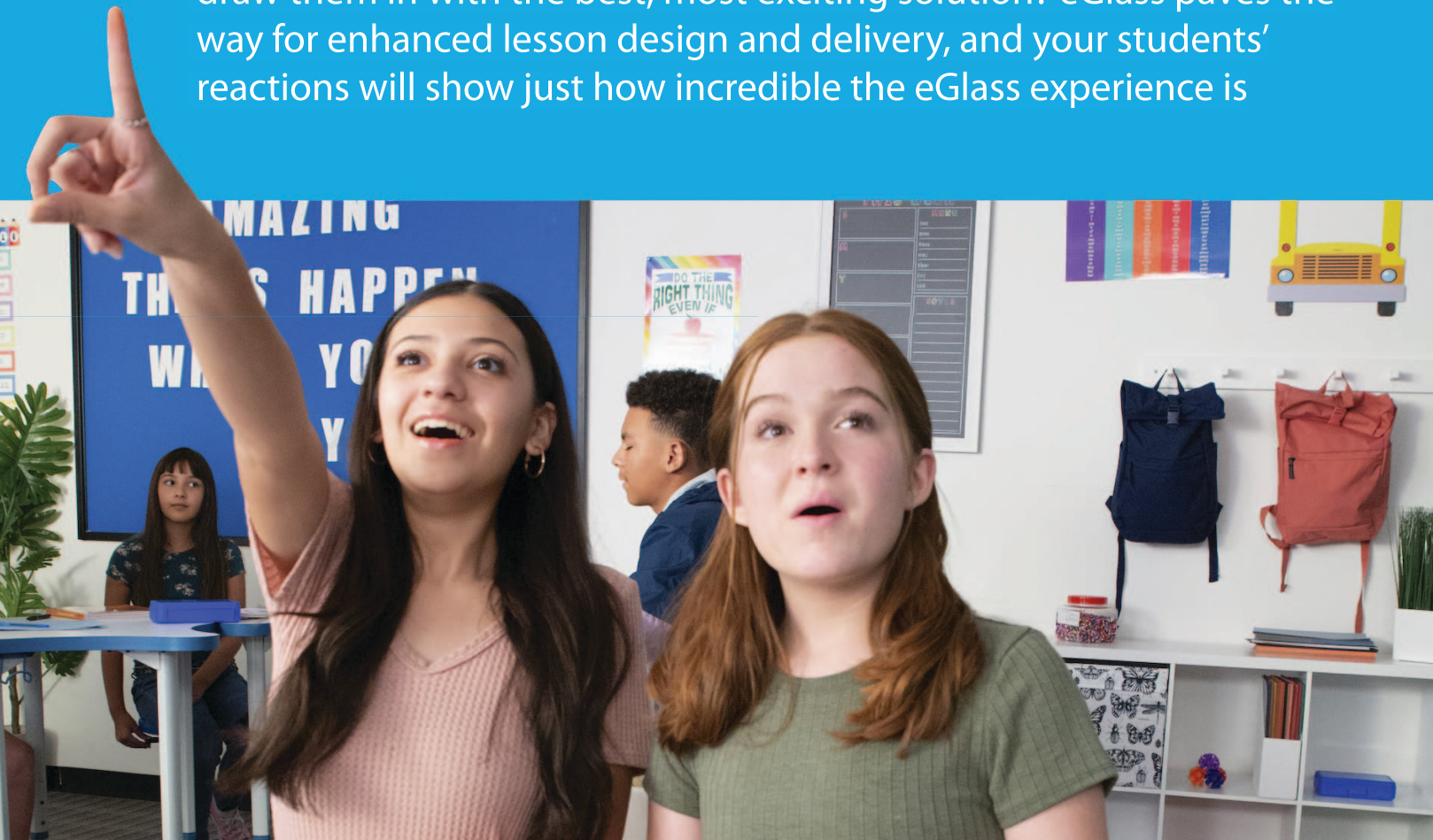




And let's be clear...

Students love eGlass

If teachers were sales people, students would be the customers. Why not draw them in with the best, most exciting solution? eGlass paves the way for enhanced lesson design and delivery, and your students' reactions will show just how incredible the eGlass experience is



Learn more at www.thehovercam.org/eglass

© Copyright 2022 eGlass. All rights reserved. eGlass is a trademark Pathway Innovations, Inc. This is a preliminary datasheet and is subject to change without notice. Depicted product appearance, features and specifications may vary in the final product(s). eGlass shall not be liable for technical or editorial errors or omissions contained herein. eGlass disclaims all responsibility and liability for the distribution of and/or reliance on this datasheet. eGlass and eGlass software may be protected by one or more of the following patents and patent applications: Patent No. US8508751, US10523893, US10586307, US10402940, USDB09600, US16/784654, US29/756006, US17/079345, US29/768320. Rev.220329

by **Pathway**[®]
THE MAKERS OF eGLASS & HOVERCAM



Draw. Them. In.

www.thehovercam.org.uk/eglass

sales@wishtrac.com



Pathway/[®]

© Copyright 2023 eGlass. All rights reserved.

eGlass is a registered trademark of Pathway Innovations, Inc. 220518