

Lansinoh®

SMARTPUMP 2.0

Double Electric Breast Pump



INSTRUCTIONS FOR USE

Intended Use of Breast Pump

The Lansinoh® Smartpump 2.0 Double Electric Breast Pump is intended to express and collect the breastmilk of a nursing woman for the purpose of feeding collected breastmilk to a baby. The Smartpump 2.0 is intended for a single user.

Indications of Breast Pump

Lansinoh Smartpump 2.0 Double Electric Breast Pumps are indicated to elimination of clinical situations such as milk stasis in the breast, engorgement and mastitis caused by insufficient milk discharge, relieve sore and cracked nipples and to bring out flat or inverted nipples. Also, Lansinoh Smartpump 2.0 Double Electric Breast Pumps enable mothers to provide breast milk for babies who cannot feed directly at the breast for a variety of reasons, such as latch-on problems, premature or unwell babies.

Contraindication of Breast Pump

There are no known contraindications.

Important Safeguards

Read All Instructions Before Using

Before first use, sanitize all parts that will come into contact with milk according to instruction on pg 10, section 3.1. Before each use visually inspect the individual components for cracks, chips, tears, discoloration, or deterioration. In the event that damage to the device is observed, please discontinue use until the parts have been replaced.

Danger To reduce the risk of electrocution:

- Always unplug this product immediately after using.
- Do not use while bathing.
- Do not place or store this product where it can fall or be pulled into a tub or sink.
- Do not place or drop pump into water or other liquid.
- Do not reach for an electrical product that has fallen into water. Unplug immediately.

Warning:

The Lansinoh® Smartpump 2.0 Double Electric Breast Pump is a personal care item. To prevent cross contamination/infection, the Smartpump 2.0 tubing and breastmilk expression set should never be shared between mothers or re-sold from one mother to another. Each user should use her own Smartpump 2.0.

If you are a mother who is infected with Hepatitis B, Hepatitis C or Human Immunodeficiency Virus (HIV), pumping breastmilk using the Lansinoh® Smartpump 2.0 Double Electric Breast Pump will not reduce or remove the risk of transmitting the virus to your baby through your breastmilk.

When using electrical products, especially when children are present, basic safety precautions should always be maintained.

To reduce the risk of burns, electrocution, fire, or injury to persons:

- This product should never be left unattended when plugged in.
- Close supervision is necessary when this product is used near children.
- Use this product only for its intended use as described in this manual. Do not use attachments not recommended by the manufacturer.
- Repairs must be performed only by an authorized service agency. Do not repair yourself! No modifications to the device are permitted.
- Never operate this product if it has a damaged cord or plug, if it is not working properly, if it has been dropped or damaged, or dropped into water.
- Keep the cord away from heated surfaces.
- Never use while sleeping or drowsy.
- Never drop or insert any object into any opening or tubing.
- Do not use this product if it is broken or any parts are missing.
- Do not allow small children or pets to play with the pump unit, AC adapter, etc.
- Do not use outdoors with the AC adapter or operate where aerosol spray products are being used or where oxygen is being administered.

Caution:

If you feel pain in your breast or nipple during operation, turn the pump off or slide a finger between the flange and your breast to immediately break the suction. If irritation or discomfort occurs, discontinue use and see a doctor.

Save These Instructions along with your receipt for future reference.

Congratulations!

Your decision to provide your baby with breastmilk, even if you need to be apart, is one of the most precious gifts you can give your baby. The Lansinoh® Smartpump 2.0 is a safe, efficient, and effective choice for mom's who need to pump regularly.

Contents

	Page
1. Quick Start Guide	5-6
2. Pump Diagram	7-9
2.1 Basic Controls, Display and Features	
2.2 Lansinoh® Smartpump 2.0 Breast Pump Parts	
3. Cleaning Instructions	10-11
3.1 Cleaning of Breastmilk Expression Set Before First Use	
3.2 Cleaning of Breastmilk Expression Set After Each Use	
3.3 Before Each Use of Breastmilk Expression Set	
4. Assembly	12-14
4.1 Assembling the Breastmilk Expression Set	
4.2 Connecting the Breastmilk Expression Set	
4.3 Connecting for Single Pumping	
5. Using the Lansinoh® Smartpump 2.0	15-18
5.1 Power Options	
5.2 Getting Started	
5.3 2-Phase Technology with Automatic Memory Function	
5.4 Customization for Comfort and Efficiency	
5.5 Completing your Pumping Session	
6. Pumping Tips	19
7. Troubleshooting	20
8. Breastmilk Storage Guidelines	21
9. Lansinoh® Bottle With NaturalWave® Nipple	22
10. Technical Data	23
11. Warranty	24-27

PLEASE DO NOT RETURN THIS PUMP TO THE RETAILER.

Lansinoh's dedicated Customer Service team is here to help.

If you experience any issues with your Lansinoh® Smartpump 2.0 breast pump please call **800-292-4794** or email customerservice@lansinoh.com, Monday - Friday 8am-8pm EST.

1. QUICK START GUIDE

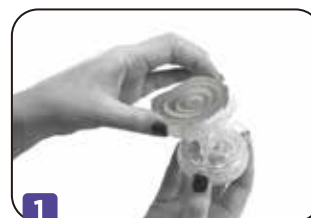
Do NOT wash or sanitize tubing

Before first use, sanitize all parts that will come into contact with milk according to instruction on pg 10, section 3.1.

Please carefully read all instructions prior to use

Assembly

See detailed instruction on pgs 12-14. Proper assembly is essential to ensure proper function and suction.



1
Insert purple diaphragm with arrows pointing forward



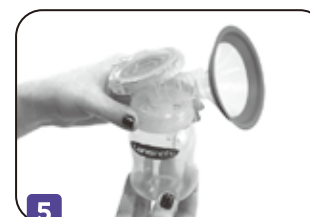
2
Attach clear cover and twist so tubing connector faces back



3
Attach flange



4
Insert valve



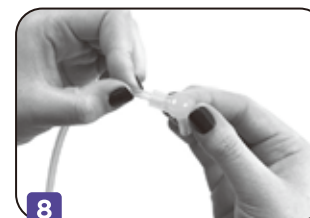
5
Attach bottle



6
Attach tubing



7
Secure Y connector



8
Secure pump connector

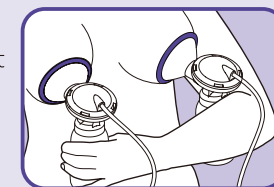


9
Attach to pump base

Connect pump to power using AC Adapter or six AA Alkaline Batteries (not included)

Getting Started


Hold breastmilk expression set to your breasts so that the nipple is aligned to extend straight toward the nipple tunnel of the breast flange, ensuring there are no gaps for air to enter. Make sure set is tilted slightly downward to allow milk to flow into bottles.

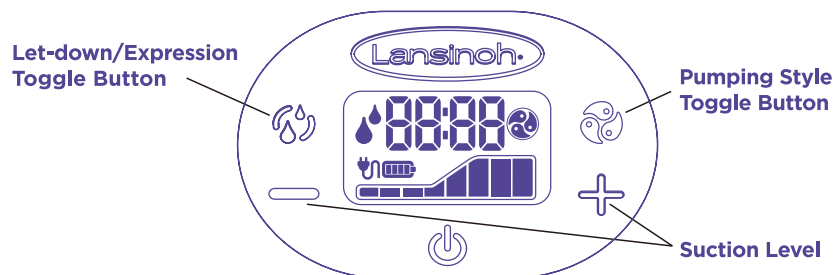


2-Phase Technology Using Let-Down and Expression Phases

Press the power button  to start the pump in let-down phase. 


Let-down phase will run automatically for two minutes.

To begin expression phase sooner, press the let-down/expression toggle button  to move to the expression phase. Press the let-down/expression toggle button again at any point to switch back to let-down phase.



Customization for Comfort and Efficiency



Pumping Style Selection

Every baby feeds differently. The Smartpump 2.0 offers three different pumping styles to choose from, allowing you to choose the option that is most like your baby's feeding pattern. Change the pumping style using the style mode toggle button  to find the pumping style that works best for you.



NOTE: When you turn the pump on for the very first time it starts in let-down mode, suction level 5. When you switch to the expression mode the pump will start in style 2, suction level 3.

Adjusting Suction Levels

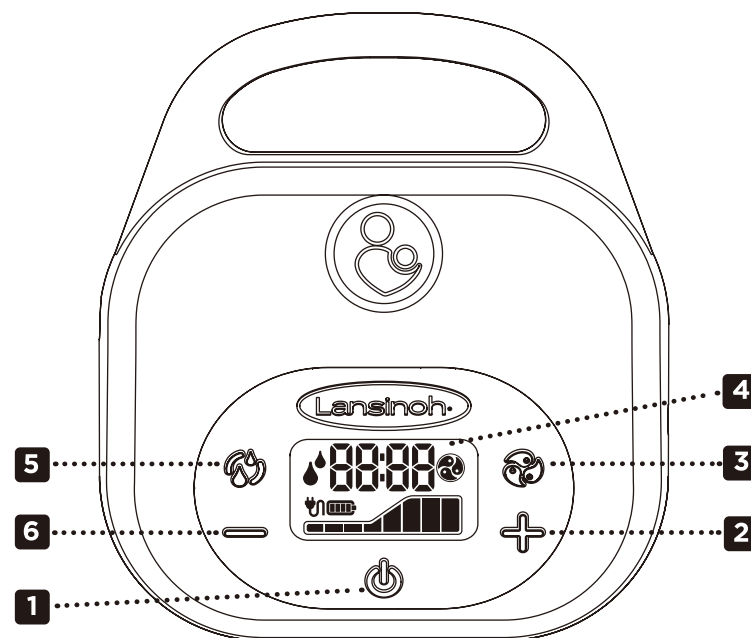
Increase or decrease the suction to the maximum level that you find comfortable. Increase suction by pressing the  button. Decrease suction by pressing the  button.













NOTE: When increasing suction, the target suction level will flash, and the pump will slowly increase suction. The flashing will stop once the target level has been reached.

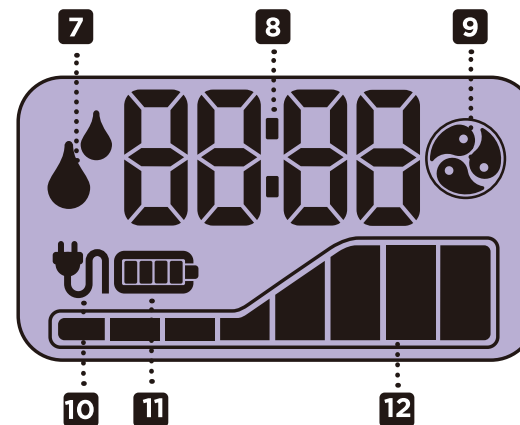
Lansinoh® is here to support you. If you have questions, please do not hesitate to **contact us at (800) 292-4794.**

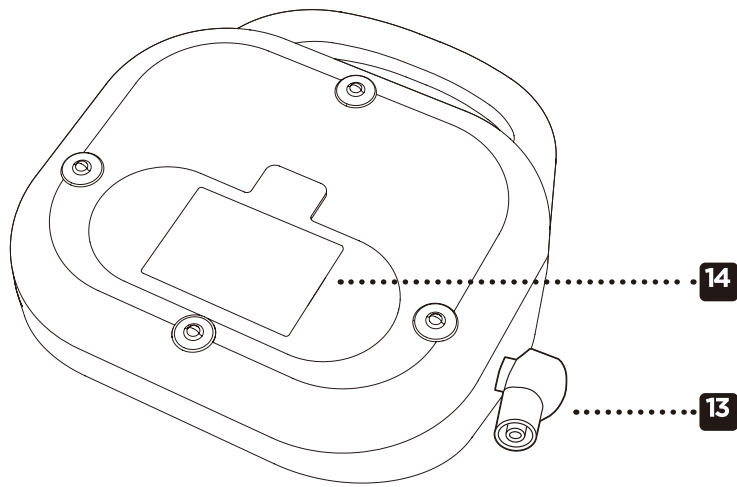
2. PUMP DIAGRAM



2.1 Basic Controls, Display and Features

- | | |
|--|---|
| 1. Power, On/Off button  | 9. Pumping Style Indicator  |
| 2. Suction Level Increase Control Button  | 10. AC Power Indicator  |
| 3. Pumping Style Toggle Button  | 11. Battery Power Indicator  |
| 4. LCD Display | 12. Suction Level Indicator  |
| 5. Let-Down/Expression Toggle Button  | |
| 6. Suction Level Decrease Control Button  | |
| 7. Let-Down/Expression Phase Indicator  | |
| 8. Time Display | |

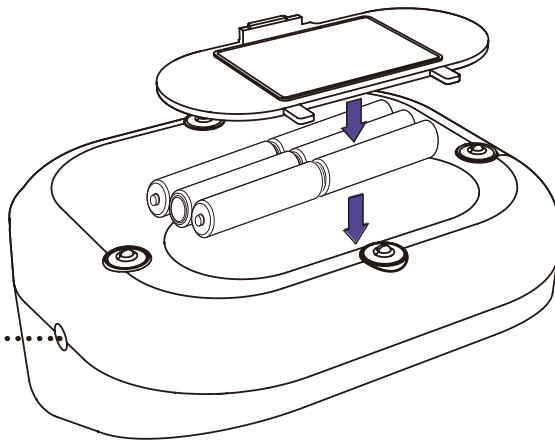




13. Tubing input

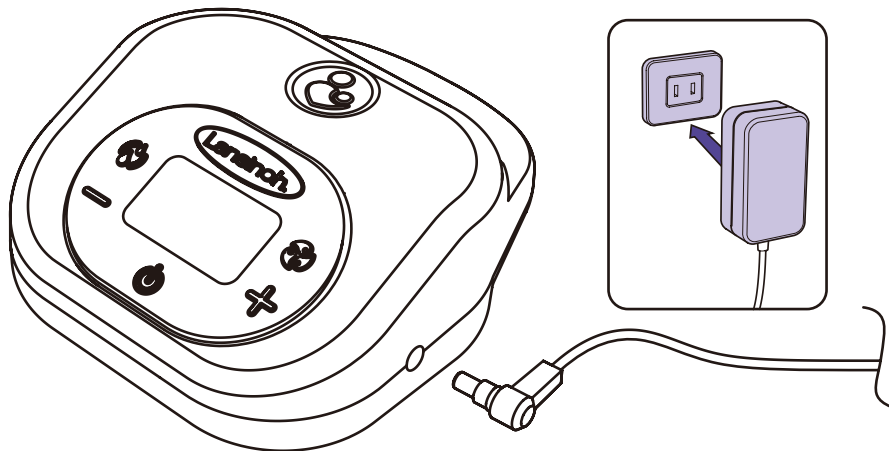
14. Battery compartment for
6 AA batteries (not included)

15. AC adapter input



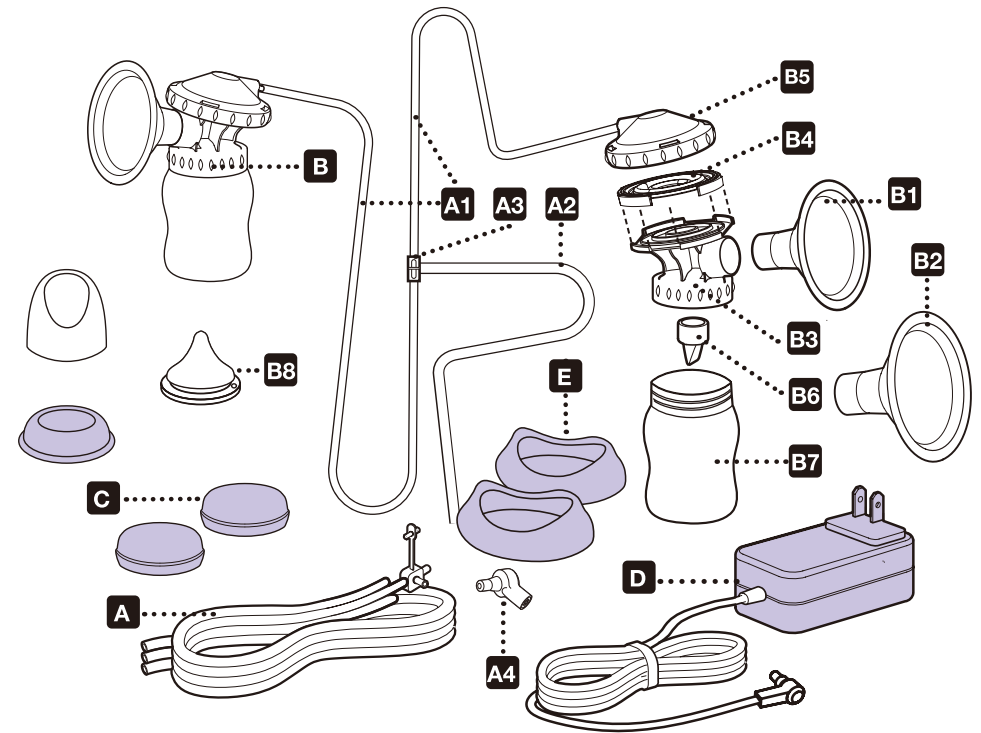
AA Battery Compartment
(underneath pump)

AC Adapter



2.2 Lansinoh® Smartpump 2.0 Breast Pump Parts

Item	Item Number
A. Smartpump 2.0 Tubing	#53403
A1 Silicone Tubes 300 mm (2)	
A2 Silicone Tube 600 mm	
A3 Smartpump 2.0 Tubing Y Connector	#53405
A4 Smartpump 2.0 Pump Connector	#53453
B. Breastmilk Expression Set Includes:	
B1 ComfortFit® Breast Flange 25mm (2)	#50408
B2 ComfortFit® Breast Flange 30.5mm (2)	#53408
B3 Smartpump 2.0 Breast Flange Body (2)	#53454
B4 Smartpump 2.0 Diaphragm (2)	#53402
B5 Smartpump 2.0 Diaphragm Cap (2)	#53410
B6 White Valve (2 + 2 extra)	#53401
B7 5 oz (150 ml) Bottle (2)	#53451
B8 NaturalWave® Slow Flow Nipples (1)	#71027
C. Storage Lids (2)	#53450
D. Smartpump 2.0 AC Adapter/power cord	#50409
E. Wide Neck Bottle Holder (2)	#53452



Two extra white valves are included.
To order replacement parts please visit www.Lansinoh.com

WARNING: To prevent cross contamination/infection, the Smartpump 2.0 tubing and breastmilk expression set should never be shared between mothers or re-sold from one mother to another. Each user should use her own Smartpump 2.0 tubing and breastmilk expression set.

3. CLEANING INSTRUCTIONS

Unless otherwise instructed by your healthcare provider, follow these sanitizing and cleaning instructions.

WARNING: To prevent cross contamination/infection, the Smartpump 2.0 tubing and breastmilk expression set should never be shared between mothers or re-sold from one mother to another. Each user should use her own Smartpump 2.0.

Do not boil or wash tubing or connectors!

When sanitizing parts, use enough water to keep parts afloat!

3.1 Cleaning of Breastmilk Expression Set Before First Use

1. Always wash and dry hands thoroughly with soap and water before handling the breastmilk expression set.
2. Disassemble the breastmilk expression set and place parts in a large pot.
3. Cover the parts in water making sure there is room for all of the parts to float freely in the pot.
4. Bring the water to a boil and allow the parts to boil for 5 minutes.
5. After boiling remove the parts from the pot with tongs and place on a clean towel to dry, covering the parts with a second towel.
6. Allow the parts to dry completely before assembly and use. Partially dried parts may affect the operation of the pump.
7. Once parts are dry they can be stored in a clean plastic bin with a lid or in a clean plastic zipper bag.

3.2 Cleaning of Breastmilk Expression Set After Each Use

1. Disassemble the breastmilk expression set, setting aside the tubing and connectors.
2. Rinse all parts with cold water immediately after each use. Place pump parts in a clean wash basin used only for washing infant feeding equipment. Do not place pump parts directly in the sink, because germs in sinks or drains could contaminate the pump.
3. Hand wash all parts of the breastmilk expression set using warm soapy water. A nipple brush may be used to scrub the hard plastic pieces of the breastmilk expression set, but should not be used on the soft silicone valve or diaphragm.
4. Rinse parts with running clean, warm water, or by submerging in fresh water in a separate basin that is used only for cleaning infant feeding items.
5. Place pump parts on a clean, unused dish towel or paper towel in an area protected from dirt and dust. Do not use a dish towel to rub or pat items dry. Allow the parts to dry completely before assembly and use. Partially dried parts may affect the operation of the pump.
6. Once parts are dry they can be stored in a clean plastic bin with a lid or in a clean plastic zipper bag.

7. Clean wash basin and bottle brush. Rinse them well and allow them to air-dry after each use. Wash them by hand or in a dishwasher at least every few days.

For Daily Sanitization of Breastmilk Expression Set:

1. Place clean parts in a pot and cover with water making sure there is room for all of the parts to float freely in the pot.
2. Bring the water to a boil and allow the parts to boil for 5 minutes.
3. After boiling remove the parts from the pot with tongs and place on a clean towel to dry, covering the parts with a second clean towel. Place wash basin and bottle brush on a clean, unused dish towel or paper towel in an area protected from dirt and dust. Do not use a dish towel to rub or pat items dry because doing so may transfer germs to the items.
4. Allow the parts to dry completely before assembly and use. Partially dried parts may affect the operation of the pump.
5. To use steam or microwave sterilizers: Follow the manufacturers instructions. Ensure all openings are face down in the sterilizer. Ensure you wash your hands before removing equipment from the sterilizer.

3.3 Before Each Use of Breastmilk Expression Set

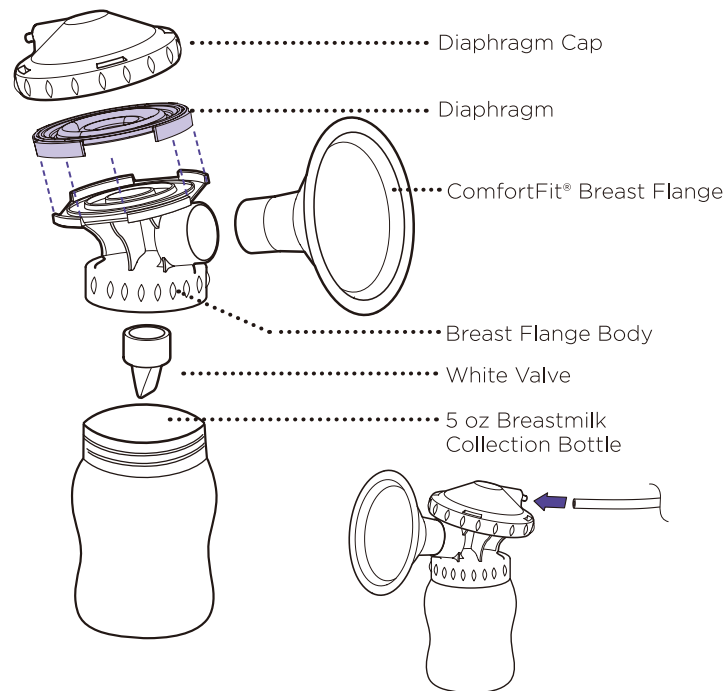
1. Always wash and dry hands thoroughly with soap and water before handling the breastmilk expression set.
2. Before assembling the breastmilk expression set, be sure that all of the parts are completely dry.
3. Visually inspect the individual components for cracks, chips, tears, discoloration or deterioration. These may affect the functionality of the pump.
4. Inspect the tubing. If you find condensation in the air tube, wash and dry it immediately or replace the tubing. If you see breastmilk inside the tubing or tubing connectors do not attempt to wash, clean or sanitize the tubing or tubing connectors. Instead contact the manufacturer.
5. Should you have any questions or concerns about your parts please contact Lansinoh® at **800-292-4794** for further guidance.
6. To purchase replacement parts for your pump please visit **www.Lansinoh.com**

WARNING: It is highly recommended not to use any method other than the above mentioned cleaning methods.

WARNING: Use caution when cleaning the small white valve. It is important for proper suction. Do not use excessive force and do not clean with a baby bottle brush or a nipple brush. Gently wash by hand in hot, soapy water and rinse under hot running water.

4. ASSEMBLY

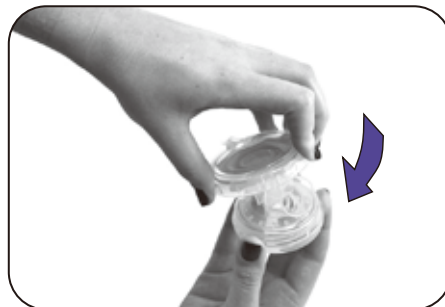
4.1 Assembling the Breastmilk Expression Set



1. Place purple silicone diaphragm, arrow side up, on top of breast flange body. Ensure diaphragm fits securely between rims of breast flange body and arrows point toward breast flange.



2. Place clear diaphragm cap over breast flange body and twist to secure so that the tubing portal is facing the back of the pump.



3. Firmly push ComfortFit® Flange into breast flange body.



4. Holding the base of the white valve, gently secure the valve into the bottom of the breast flange body.

NOTE: Use care when handling and cleaning the small white valve.



5. Screw collection bottle onto breast flange body.



6. Attach end of 300 mm tubing to back of diaphragm cap. Ensure that tubing is pushed all the way to the base of the attachment port and completely covers it.



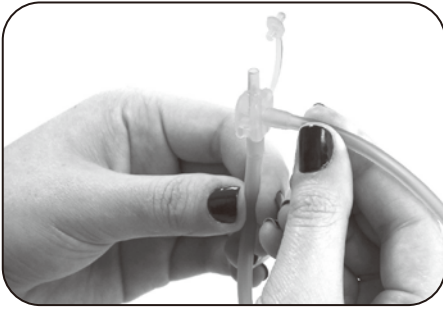
7. Attach other end of 300 mm tubing to tubing Y connector.



8. Repeat assembly process for second breast flange body.

4.2 Connecting the Breastmilk Expression Set

Once Breastmilk Expression Set is assembled, connect to pump base:



1. Secure one end of 600 mm tubing to tubing Y connector.



2. Secure other end of 600 mm tubing firmly to the pump connector.



3. Insert pump connector into opening on left side of pump.

4.3 Connecting for Single Pumping



1. Remove one of the 300 mm tubing from the tubing Y connector.



2. Secure plug into open outlet of tubing Y connector.

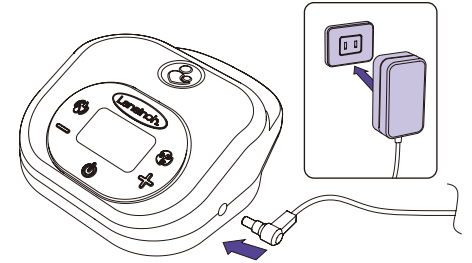
5. USING THE LANSINOH® SMARTPUMP 2.0 DOUBLE ELECTRIC BREAST PUMP

5.1 Power Options

The pump may be operated using the following power supply modes:

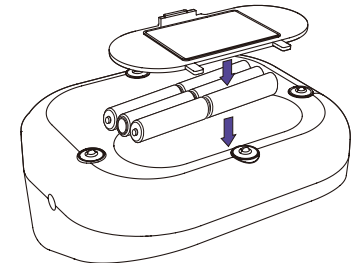
AC Adapter

1. Connect the AC adapter to the power receptacle located on the right side of the pump. Plug the AC adapter into an available electrical outlet.
2. Electrical safety can only be achieved when the breast pump is connected to the AC power adapter supplied with the product. (See "Technical Data" section, page 23)



AA Alkaline Batteries (not included)

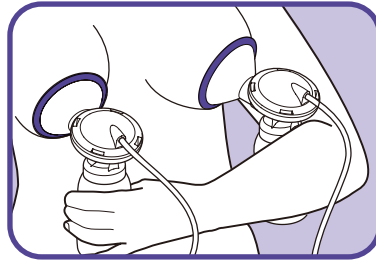
1. Make sure the batteries are inserted correctly according to the polarity (+) and (-) as indicated.
2. Close the compartment by gently pressing the cover until it snaps into place.
 - Remove batteries if pump is not in use for a long period of time.
 - Dispose of batteries according to regulations for environmental protection and recycling.
 - Replace batteries as a simultaneous set. Do not mix old and new batteries.
 - Do not mix alkaline and standard (carbon-zinc) batteries.
 - If batteries are in the pump, but AC adapter is in use, the pump will use the adapter to power the pump, not the batteries.



For the most economical use, we recommend using your pump with the AC adapter provided. Your AC adapter is a universal AC plug adapter type and can be used with 100 Vac to 240 Vac systems with 50Hz and 60Hz mains.

5.2 Getting Started

If possible, wait until your breastmilk supply and breastfeeding are well established. This is normally at least 3-4 weeks after birth, unless otherwise advised by your healthcare provider.



1. Hold the breastmilk expression set to your breasts so that the nipple is aligned to extend straight toward the nipple tunnel of the breast flange.
2. Make sure the breast completely fills the breast flange so that a vacuum is formed and no air escapes.
3. The breastmilk expression set and nipple tunnel should tilt slightly downward to allow milk to flow naturally toward the bottle.

If you experience friction or discomfort on your nipples, you may need a different size flange. Larger size flanges are available. For more details, please call 800-292-4794 or visit www.Lansinoh.com

5.3 2-Phase Technology with Automatic Memory Function

Using Let-Down and Expression Phases

1. Press and hold the on/off button to turn the pump on. The Lansinoh® Smartpump 2.0 will always start in the let-down phase.
NOTE: When you turn the pump on for the very first time it starts in let-down phase, suction level 5.
2. After two minutes, the let-down phase will automatically change to the expression phase.
NOTE: When you switch to the expression mode for the very first time the pump will start in pumping style 2, suction level 3.
3. If you prefer to bypass the pre-set two minute let-down phase or your milk lets down sooner than two minutes, press the let-down/expression toggle button to move to the expression phase.
4. Automatic memory function will save the last pumping style and suction level for each phase. However, the suction level will gradually build to the last used setting for a more comfortable pumping experience.







The style mode indicator will appear in the display to signify that you are in the expression phase.


5.4 Customization for Comfort and Efficiency

Using Customizable Pumping Styles

Choose Your Pumping Style

Each baby is unique – right down to the way he or she feeds. The Lansinoh® Smartpump 2.0 offers three different pumping styles to choose from – so you can select the one that most closely matches your baby’s feeding pattern.

	Pumping Style 1	
	Pumping Style 2	
	Pumping Style 3	



1. With the pump in expression mode, select the pumping style that is most comfortable and efficient for you by pressing the pumping style toggle button .
2. Pressing the button again will select the next pumping style.
NOTE: The pumping style toggle button only functions when the pump is in expression mode.
3. The mode will be indicated on the LCD display by the pumping style mode indicator.

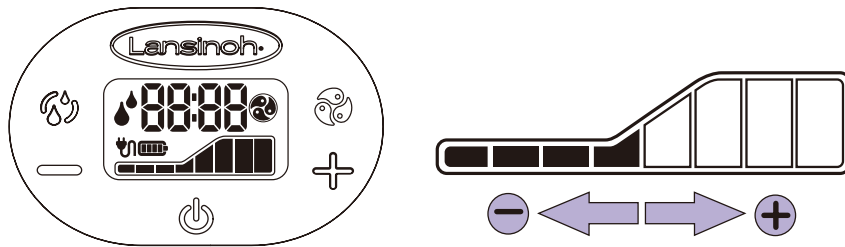
As your baby grows, you may find that their feeding pattern changes. The customization features of the Smartpump 2.0 allow you to make adjustments so you're always getting the best results.

5.4 Customization for Comfort and Efficiency (cont.)

Tailor for comfort


Within each pumping style, there are eight levels of suction to choose from:

1. Adjust for stronger suction by pressing the suction level increase control button. 
Whenever the pump is switching to higher suction levels (within a mode or when switching modes) the targeted level will flash. The pump will slowly transition to the higher suction level. The flashing will stop once the target level is reached.
2. Adjust for lower suction by pressing the suction level decrease control button. 
3. The current suction level will be indicated by the number of dark bars on suction level indicator.



NOTE: If at any time the suction on your breast reaches uncomfortable levels, reduce the suction level by pressing the  button on the left side of the LCD screen or disconnect the tubing from its receptacle on the electric pump.

5.5 Completing Your Pumping Session

1. When a pumping session is finished, turn the pump off with the on/off button. 
2. After turning the pump off, the display will remain on for a few seconds.
3. Make sure there is no suction on the nipple(s) before removing the breast flanges from the breast. If necessary, break the suction by inserting a finger between the breast flange and the breast. Once the suction is broken, the flange can be removed safely.

PLEASE NOTE: The LCD display light will automatically switch off if no control buttons are pressed for 20 seconds in order to save power. If the pump unit is left on and unattended for more than 60 minutes, the control system will automatically power off. To turn unit back on, hold the power-on button for several seconds.

6. PUMPING TIPS

Pumping Tips

The most important part of successful pumping is the ability to trigger the let-down reflex. This is when your milk begins to flow freely. Warm, wet compresses applied to the breasts and gentle, circular massaging of the breasts prior to and/or during a pumping session can help encourage this natural reflex. Thinking of or looking at your baby, or a photo of your baby if you are apart, can also be helpful. Some moms can achieve more than one let-down during a pumping session. You may be able to achieve a second by returning to the let-down phase by pressing the Let-down/Expression Toggle Button.

How Long To Pump

Double pumping, compared to single pumping, will reduce the time you spend expressing your milk. Breastmilk is produced on a supply and demand basis. Expressing your breastmilk regularly will stimulate your body and help you maintain your milk supply. Just like with breastfeeding, it is not necessary to time your pumping sessions. As you get more experienced with pumping, you will get a better sense of the time it takes for your body to express your milk using a breast pump. If you have any breastfeeding or breast pump related questions, consult with an International Board Certified Lactation Consultant (IBCLC), breastfeeding counselor, or other healthcare provider such as your primary physician.

Pumping and Feeding Tips

- You may pump one breast while nursing the baby on the other. This allows you to maximize pumping effectiveness using the let-down reflex stimulated by your baby's sucking.
- Always test the temperature of any liquid before feeding your baby.
- Do not let a child take a bottle to bed or self-feed for long periods.
- To prevent possible choking hazard, test strength of the feeding bottle nipple by pulling on the bulb portion. Discontinue use if any tear or crack appears.

7. TROUBLESHOOTING

Troubleshooting the Lansinoh® Smartpump 2.0 Double Electric Breast Pump

Interruption of Electrical Service

The Smartpump 2.0 will shut off during a pumping session if the power source is changed while pumping.

This includes unplugging the power adapter or inserting the power adapter while pumping using batteries.

This safety feature is designed to prevent sudden changes in suction levels. If you lose power during a pumping session because you switched power sources mid-pumping session, simply press down on the power button to turn the pump back on.

If you experience an interruption in the normal operation of the electrical and/or mechanical function of the pump, simply do the following:

- Verify the power cord is still plugged in to the pump or the wall. If using batteries, verify all six batteries are fully inserted and none have come loose.
- If either the power cord or batteries became disconnected, fix the connection, and then press and hold the power button for two seconds to turn the pump back on.
- If the pump is shutting off and the adapter or batteries were firmly in place when this occurred, please Lansinoh Customer Service at **800-292-4794** or email customerservice@lansinoh.com.

Discomfort While Pumping

If you feel any discomfort, you may need a different size flange. Visit www.Lansinoh.com or call **800-292-4794**.

Decreased Suction

If it feels like the suction has decreased, try the following:

- Remove the tubing from pump and place a finger over the tubing connector.
- If you feel suction, the pump is operating properly, but the breastmilk expression set may not be correctly assembled or the white valve may be damaged.
- Make sure the breastmilk expression set has been properly assembled. Check the assembly information in the section “Assembling the Breastmilk Expression Set,” page 12-14.
- Inspect the white valve for a tear or pinhole. This component is critical to achieving proper suction. Replace the white valve with one of the spare valves provided with the product.

- If no suction is felt on your finger, try unplugging the adapter from the electrical outlet, wait a few seconds, and plug it back into the electrical outlet.
- When single pumping, check the tubing connector on the front of the pump to make sure it is closed for single pumping. If open, close the connector.
- If double pumping, ensure that the breastmilk expression set is securely connected on both breasts before starting the pump.

8. BREASTMILK STORAGE GUIDELINES

Breastmilk Storage and Thawing Guidelines for Full-term Healthy Babies

Check with your healthcare provider or an International Board Certified Lactation Consultant for specific storage instructions. When freezing, store in the back of the freezer and do not store milk in the door as temperature can fluctuate as the door is opened and closed.

Guide to storing fresh breastmilk for use with healthy, full-term babies

Place	Temperature	How Long	Things to Know
Countertop, table	Room temperature (up to 77°F)	Up to 4 hours	Containers should be covered and kept as cool as possible. Covering the container with a clean cool towel may keep milk cooler. Throw out any leftover milk within 2 hours after the baby is finished feeding.
Refrigerator	40°F	Up to 4 days	Store milk in the back of the refrigerator. When at work, it's OK to put breastmilk in a shared refrigerator. Be sure to label the container clearly.
Freezer	0°F or colder	Within 6 months is best. Up to 12 months is acceptable	Store milk toward the back of the freezer where the temperature is most constant. Milk stored at 0°F or colder is safe for longer durations, but the quality of the milk might not be as high.

Source: Adapted from 7th Edition American Academy of Pediatrics (AAP) Pediatric Nutrition Handbook (2014); 2nd Edition AAP/American College of Obstetricians and Gynecologists (ACOG) Breastfeeding Handbook for Physicians (2014); Academy of Breastfeeding Medicine (ABM) Clinical Protocol #8 Human Milk Storage Information for Home Use for Full-Term Infants(link is external) (2017); CDC Human Milk Storage Guidelines (2018).

Date all breastmilk and use the oldest breastmilk first.

Thawing

Thaw frozen milk in the refrigerator or place the containers under cool running water, gradually warming the water until the milk is thawed. Thawed milk can be kept in a refrigerator for up to 24 hours.

Breastmilk is not homogenized and you may notice that it separates as it sits. Gently swirl thawed milk before feeding to baby to mix the layers that have separated. Breastmilk can vary in color and consistency depending upon the time of the day that the milk was expressed, what you have eaten, and the age of the baby at the time of pumping.

NOTE: DO NOT refreeze milk once it is thawed.

NOTE: DO NOT MICROWAVE HUMAN MILK! Microwaving alters the composition of the milk. Microwaving also may create “hot spots” in the milk that could burn the infant.

NOTE: DO NOT thaw breastmilk in hot or boiling water.

9. LANSINOH® BOTTLE WITH NATURALWAVE® NIPPLE

Clinically Proven to Reduce Nipple Confusion in Breastfed Babies

The patented NaturalWave® Nipple enables baby to replicate natural sucking actions learned at the breast.

Exclusive breastfeeding is recommended for at least 3-4 weeks if possible before introducing a bottle and nipple.



Latching on
Baby's lips open outward and latch onto the areola



Peristaltic “wave-like” tongue movement
Baby's tongue moves in “wave-like” motion to compress nipple and extract milk



Swallowing
Back of baby's tongue rises, channeling the milk into the esophagus

Storage & Use

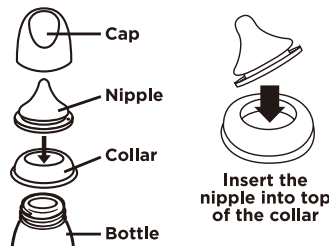
Prior to use, always inspect and pull the feeding nipple in all directions to check the product. Throw away at the first signs of damage or weakness. For safety and hygiene reasons, replace the nipple every 7 weeks.

Cleaning

Before first use, boil all parts for 5 minutes to sanitize. Ensure all parts are completely covered in water and free floating. Always wash all components of the product immediately after each use. The feeding nipple can be washed in hot soapy water and rinsed in clean water. Dishwasher safe on top rack only. Do not clean with solvents or harsh chemicals.

Assembly

Once thoroughly dry, insert feeding nipple through the top of the screw cap collar. Attach the screw cap collar securely onto the bottle neck. When carrying a full bottle, make sure it is closed with the collar in place, taking care to position the feeding nipple in the center of the collar to activate the “spill-proof” function of the product.



Precautions

Do not leave bottle in direct sunlight, heat or disinfectant (sterilizing solution), as this may weaken the nipple. Do not clean with or allow feeding nipple to come into contact with solvents or harsh chemicals. Damage could result. Fill with the required amount of liquid and tighten the screw cap before using. Do NOT overfill. Heating in a microwave is NOT recommended as it may produce uneven heating and high localized temperatures. If you choose to heat liquid this way, DO NOT SEAL BOTTLES. Swirl well before use, and always check the

temperature before feeding baby. Hot or unevenly heated liquid may burn baby's mouth. Do not warm liquid by placing the bottle directly onto gas or electric rings, warming plates, in electric ovens, etc. Wash after every use. Some liquids and sterile solutions may make the silicone become opaque. This does not alter any of its properties.

WARNING!

DO NOT MICROWAVE HUMAN MILK! Microwaving alters the composition of the milk and may also create “hotspots” in the milk that could burn the infant. Allowing your child to use this product for prolonged periods separate from regular mealtimes or to go to sleep while drinking liquids, other than water, from this bottle may cause or contribute to early childhood tooth decay. Always use this product with adult supervision. Keep all components not in use out of the reach of children. Do not leave baby alone with drinking equipment due to the risk of choking. Never use feeding nipple as a pacifier or soother. Always check liquid temperatures before feeding.

10. TECHNICAL DATA

1. Power Supply

Battery operation: 6 AA size alkaline batteries, all connected in series

Operating time: Minimum 30 minutes. Maximum 2 hours. Results are dependent on battery freshness and pump settings.

AC Adapter operation: 100-240VAC wall plug type AC adapter, galvanically isolated with 9Vdc output voltage

Pump power dissipation: 10.0 Watts maximum

Voltage regulation: Linear voltage regulator with low dropout voltage and short circuit protection

2. Control System

Control unit: Microcontroller with integral program memory

Program memory: 32K flash ROM, 2K RAM memory

HMI: LCD display with LED backlight, soft keypad

Single/double control: Single or double breast pumping possible

Selectable pumping style mode: 3 pumping style modes are selectable and controlled from keypad

Adjustable suction level: 8 suction levels are selectable and controlled from keypad

Suction vacuum level (Expression/Double pumping): Minimum 100 mmHg, Maximum 280mmHg.

Technical Data Bluetooth version 4.1

Range up to 10m

Power Requirements

AC Adapter (included)

AC Adapter – North American Plug Configuration

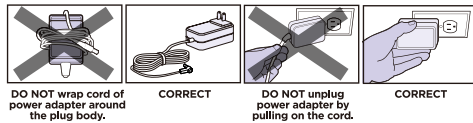
100-240VAC wall plug type

AC adapter, galvanically isolated adapter with 9Vdc output voltage.

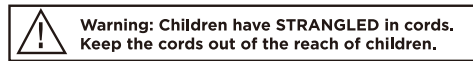
Batteries (not included) 6 AA batteries, 1.5V alkaline

The expected use life of the pump is 500 hours.

To maintain your power adapter follow these instructions:



DO NOT use power adapter if damaged.



11. WARRANTY

Limited Consumer Product Warranty (United States)

This product is warranted to the original consumer purchaser (the “purchaser”) to be free from defects in material and workmanship which are not commercially acceptable for the period of one year from the date of purchase on the pump mechanism (pump body and pump motor) and the period of 90 days from the date of purchase on all other product components. This warranty is provided only to products purchased in the United States and need parts shipped within the United States. Warranty coverage terminates if you (1) sell or otherwise transfer this product to another person; (2) improperly or incorrectly perform any maintenance or repair of this product; (3) use any non-Lansinoh® brand replacement parts with this product; or (4) misuse, abuse, or alter the product.

This warranty gives you specific legal rights and you may also have other rights, which vary, by location.

SYMBOLS	MEANING OF THE SYMBOLS
	Follow instructions for use
	Identifies the manufacturer
	Indicates the date of manufacture
	Type BF applied part
	Class II equipment
	Keep the device dry
	Keep the device away from sunlight
	Indicates the temperature limitation for operation, transport and storage.
	Indicates the humidity limitation for operation, transport and storage.
	Indicates the atmospheric pressure limitation for operation, transport and storage.
IP22	Indicates the protection against ingress of solid foreign objects and against harmful effects due to the ingress of water
	This pump is made of various metal and plastics. Before disposal, the device is to be rendered unusable and it must be disposed of as sorted waste in accordance with local waste electrical and electronic equipment regulations. To avoid the harmful effects on the environment and public health align with your defined local return and collection rules for waste electrical and electronic equipment (incl. batteries).
FCC	Indicates the compliance with Federal Communications Commission requirements.
	Indicates that the packaging contains products intended to come in contact with food.
	Indicates the positioning of battery cell.
	Indicates to handle the fragile device with care.

LANSINOH® MAKES NO EXPRESS OR IMPLIED WARRANTY OF ANY KIND REGARDING THE PRODUCT OTHER THAN THOSE WARRANTIES EXPLICITLY SET FORTH HEREIN. ANY IMPLIED WARRANTY, INCLUDING ANY IMPLIED WARRANTY OF MERCHANTABILITY OR ANY IMPLIED WARRANTY OF FITNESS FOR A PARTICULAR PURPOSE, TO THE EXTENT PERMITTED BY LAW, SHALL BE LIMITED IN DURATION TO A PERIOD OF 90 DAYS FROM THE DATE OF PURCHASE BY THE ORIGINAL PURCHASER.

In the event the product is found by Lansinoh® to not meet the above limited warranty, as purchaser’s sole and exclusive remedy Lansinoh® will repair or, at the option of Lansinoh®, replace this product without charge for such replacement or parts or labor. No replacement or repair is provided outside of the United States.

NOTE: The purchaser shall bear all expense for returning this product to Lansinoh®.

Only Lansinoh® brand replacement parts are recommended for use with Lansinoh® breastfeeding products.

TO THE EXTENT PERMITTED BY LAW, LANSINOH® SHALL NOT BE LIABLE FOR ANY INCIDENTAL OR CONSEQUENTIAL DAMAGES INCLUDING, BUT NOT LIMITED TO, REPLACEMENT COSTS RESULTING FROM THE BREACH OF ANY EXPRESS OR IMPLIED WARRANTY.

If you wish to make a claim under this warranty, you must return the product to Lansinoh® Laboratories Inc., prepaid, together with your dated bill of sale or other dated proof of purchase and a brief statement of the problem, along with a Replacement Authorization (RA) number. You may obtain the appropriate Replacement Authorization number and shipping address by calling the phone number or sending an email to the email address provided below.

Items returned without an associated Replacement Authorization Number will be returned to sender.

To obtain the address to Return Goods or a Replacement Authorization Number: **800-292-4794 | customerservice@lansinoh.com**

Declaration for Electromagnetic Compatibility (EMC)

For information use only

FCC Statement: This device complies with part 15 of the FCC rules. Operation is subject to the following two conditions: (1) This device may not cause harmful interference, and (2) this device must accept any interference received, including interference that may cause undesired operation.

This equipment has been tested and found to comply with the limits for a Class B digital device, pursuant to part 15 of the FCC Rules. These limits are designed to provide reasonable protection against harmful interference in a residential installation. This equipment generates, uses and can radiate radio frequency

energy, and if not installed and used in accordance with the instructions, may cause harmful interference to radio communications. However, there is no guarantee that interference will not occur in a particular installation. If this equipment does cause harmful interference to radio or television reception, which can be determined by turning the equipment off and on, the user is encouraged to try to correct the interference by one or more of the following measures:

- Reorient or relocate the receiving antenna.
- Increase the separation between the equipment and receiver.
- Connect the equipment into an outlet on a circuit different from that to which the receiver is connected.
- Consult the dealer or an experienced radio/TV technician for help.

Stacking: This device should not be used adjacent to or stacked with other equipment. And if adjacent or stacked use is necessary, this device should be observed to verify normal operation in the configuration in which it will be used.

Disposal: The symbol which can be found on the product or on the package surface indicates that the product shall not be disposed with other household wastes. It is the users responsibility to properly dipose of the product, or facilitate recycling activities. For further information about the recycling collection points, please contact your local authority or Lansinoh Customer Service.

EN 60601-1-2 STANDARD TEST REQUIREMENTS

Immunity Test Levels for ENCLOSURE PORT

Phenomenon	Basic EMC standard or test method	IMMUNITY TEST LEVELS	
		Professional healthcare facility environment	HOME HEALTHCARE ENVIRONMENT
ELECTROSTATIC DISCHARGE	IEC 61000-4-2	± 8 kV contact ± 2 kV, ± 4 kV, ± 8 kV, ± 15 kV air	
Radiated RF EM fields ^{a)}	IEC 61000-4-3	3 V/m ^{d)} 80 MHz - 2,7 GHz ^{b)} 80 % AM at 1 kHz ^{c)}	10 V/m ^{d)} 80 MHz - 2,7 GHz ^{b)} 80 % AM at 1 kHz ^{c)}
Proximity fields from RF wireless communications equipment	IEC 61000-4-3	See 8.10	
RATED power frequency magnetic fields ^{d) e)}	IEC 61000-4-8	30 A/m ^{g)} 50 Hz or 60 Hz	

Immunity Test Level for Input A.C. Power PORT

Phenomenon	Basic EMC standard or test method	IMMUNITY TEST LEVELS	
		Professional healthcare facility environment	HOME HEALTHCARE ENVIRONMENT
Electrical fast transients/bursts ^{a) b) e)}	IEC 61000-4-4	± 2 kV 100 kHz repetition frequency	
Surges ^{a) b) j) e)} Line-to-line	IEC 61000-4-5	± 0,5 kV, ± 1 kV	
Surges ^{a) b) j) k) e)} Line-to-ground	IEC 61000-4-5	± 0,5 kV, ± 1 kV, ± 2 kV	
Conducted disturbances induced by RF fields ^{e) f) g)}	IEC 61000-4-6	3 V ^{m)} 0,15 MHz - 80 MHz 6 V ^{m)} in ISM bands between 0,15 MHz and 80 MHz ⁿ⁾ 80 % AM at 1 kHz ^{e)}	3 V ^{m)} 0,15 MHz - 80 MHz 6 V ^{m)} in ISM and amateur radio bands between 0,15 MHz and 80 MHz ⁿ⁾ 80 % AM at 1 kHz ^{e)}
Voltage dips ^{f) h) r)}	IEC 61000-4-11	0 % UT ; 0,5 cycle ^{q)} At 0°, 45°, 90°, 135°, 180°, 225°, 270° and 315° ^{q)}	
		0 % UT ; 1 cycle and 70 % UT ; 25/30 cycles ^{h)} Single phase: at 0°	
Voltage Interruptions ^{f) i) e) r)}	IEC 61000-4-11	0 % UT ; 250/300 cycles ^{h)}	

Conducted Emission Test Level

Frequency range MHz	Quasi-peak dB(μV/m)	Average dB(μV/m)
0,15 - 0,50	66 Decreasing linearly with logarithm of frequency to 56	56 Decreasing linearly with logarithm of frequency to 46
0,50 - 5	56	46
5 - 30	60	50

At the transition frequency, the more stringent limit shall apply.

Radiated Emission Test Level

Frequency range	Quasi-peak dB(μV/m)
30 - 230	40
230 - 1 000	47

Harmonic Emission Test Level Parameters

Table 1 - Limits for Class A Equipment

Harmonic order n	Maximum permissible harmonic current A
Odd Harmonics	
3	2,30
5	1,14
7	0,77
9	0,40
11	0,33
13	0,21
$15 \leq n \leq 39$	$0,15 \frac{15}{n}$
Even Harmonics	
2	1,08
4	0,43
6	0,30
$8 \leq n \leq 40$	$0,23 \frac{8}{n}$

Flicker emission test level parameters

- (Short-term Flicker) : ■1.00
(Relative steady-state voltage change) : ■3.30 %
(Maximum relative voltage change) : ■4.00 %

Manufacturer: Lansinoh® Laboratories Sağlık Gereçleri Tasarım San. Tic. Ltd. Sti.
Zafer SB Mah. Gunduz Sk. No:13 E.S.B Gazimir/ Izmir/ Turkiye

Lansinoh®

细语智能

双边电动吸奶器



使用目的

兰思诺®细语智能双边电动吸奶器用以吸取和收集哺乳妈妈的母乳，妈妈可以用收集到的母乳来喂养给宝宝。建议兰思诺细语智能双边电动吸奶器专人专用。

适用范围

兰思诺®细语智能双边电动吸奶器适用于消除因排乳不足引起的乳内淤积、肿胀等情况，帮助通过吸力吸引扁平凹陷的乳头。此外，细语智能双边电动吸奶器使母亲能够为那些由于各种原因不能直接亲喂的宝宝提供母乳，如含接问题、早产或身体不适的宝宝。

无已知禁用情况。

重要安全防护措施

使用前请阅读所有说明

首次使用前，按照第10页上第3.1节中的指导说明清洁所有将与母乳发生接触的部件。每次使用前，目视检查各部件有无开裂、碎屑、撕损、褪色或老化。如果发现吸奶器损坏，在更换损坏部件前请停止使用。

危险 为降低触电风险：

- 请务必在使用完后立即拔掉吸奶器的电源适配器插头。
- 切勿在洗浴时使用本品。
- 切勿将本品放置或存储在可能落入或被拽入到水盆或水槽中的地方。
- 切勿将吸奶器放置到或使其落入水中或其他液体中。
- 切勿触碰掉落到水中的吸奶器。一旦电器落入水中，请立即拔掉插头。

警告：

兰思诺®细语智能双边电动吸奶器为哺乳妈妈所使用。为防止交叉污染/感染，细语智能的导管和吸乳部件绝不可与他人共用或转售。每位妈妈应当使用自己专属的细语智能双边电动吸奶器。

如果您感染了乙型肝炎、丙型肝炎或人体免疫缺陷病毒（HIV），使用兰思诺®细语智能双边电动吸奶器吸取母乳并不能降低或消除通过母乳将病毒传播给宝宝的风险。

使用吸奶器时，尤其是有儿童在场时，必须始终采取基本的安全预防措施，包括：

为降低灼伤、触电、火灾或人身伤害风险：

- 在本产品已连接电源插座的情况下，切勿使其处于无人看护的状态。
- 如果使用本产品时有儿童在附近，务必密切留意。
- 本产品只可用于本手册所述预期用途。请勿使用非制造商推荐的配件。
- 只能由兰思诺客服中心进行检查。请勿自行修理！不得擅自改装吸奶器。
- 如果本产品电线或插头受损、无法正常工作、被摔过或受过损伤，或曾经落入水中，切勿再使用。
- 请将电线远离受热表面。
- 切勿在睡觉或瞌睡时使用。
- 切勿使任何物体落入或插入到吸奶器的导管和插口处。
- 如果本产品已破损或有任何零部件缺失，切勿使用。
- 切勿让儿童或宠物摆弄吸奶器以及电源适配器等配件。
- 电源适配器只可在室内使用，禁止在使用气溶胶产品或氧含量受到管控的地方使用本产品。

注意：

如果在使用过程中感到乳房或乳头疼痛，请关闭吸奶器，或者将一根手指插入ComfortFit舒适贴合乳杯和乳房之间，以消除吸力。如出现刺激或不适，停用并咨询医生。

请保存好说明书与收据，以备日后使用中做参考及作为售后服务的依据。

欢迎使用!

兰思诺® 细语智能双边电动吸奶器为不得已与宝宝分开,但仍想要继续母乳喂养的母亲设计。此款吸奶器安全、得力、有效。

1. 快速入门指南 33-34
2. 吸奶器示意图 35-37
 - 2.1 控制按钮、显示屏和功能
 - 2.2 兰思诺® 细语智能双边电动吸奶器部件
3. 清洁说明 38-39
 - 3.1 首次使用前清洗吸乳部件
 - 3.2 每次使用后吸乳部件的清洁与消毒
 - 3.3 每次使用吸乳部件前
4. 装配 40-42
 - 4.1 组装吸乳部件
 - 4.2 连接吸乳部件
 - 4.3 单边吸乳的连接
5. 使用兰思诺® 细语智能双边电动吸奶器 43-46
 - 5.1 电源选项
 - 5.2 入门指南
 - 5.3 具有自动记忆功能的双阶段技术
 - 5.4 舒适度和效率自定义
 - 5.5 完成吸乳操作
6. 吸乳操作提示 47
7. 故障排查 48
8. 母乳保存指南 49
9. 兰思诺® 奶瓶和自然波浪系列奶嘴 50
10. 技术数据 51
11. 售后与质保 52
12. 产品部件表 53

兰思诺的专业客服团队将为您提供相关帮助。

如果您在使用兰思诺® 细语智能双边电动吸奶器过程中遇到任何问题,请在北京时间周一至周五上午9点-下午5点半致电 **400-821-0385** 或者发送电子邮件至 customerservice@lansinoh.cn。

1. 快速入门指南

切勿清洗导管或对其进行消毒

首次使用前,按照第38页上第3.1节中的指导说明清洁所有将与母乳发生接触的部件(导管和导管接口除外)。

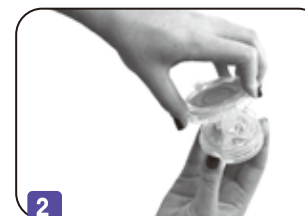
在使用之前,请仔细阅读所有说明

组装

参见第40-42页中的详细说明。正确的组装对于确保产品发挥正常功能和吸乳作用必不可少。



1
将紫色隔膜柱脚朝下放置于本体顶部



2
安装透明隔膜盖并拧紧,使导管接口朝后



3
安装乳杯



4
插入吸奶嘴



5
安装奶瓶



6
安装导管



7
导管插入Y型接口



8
导管插入导管接口

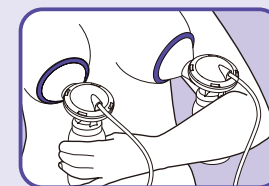


9
将导管接口插到吸奶器主机上


可使用交流适配器或6节AA电池(未包含),接通吸奶器电源

入门指南


将吸乳部件紧贴到乳房上,使乳头对准乳杯通道,确保没有空隙,以免空气进入。确保该组件稍微向下倾斜,使乳汁能够流到瓶中。



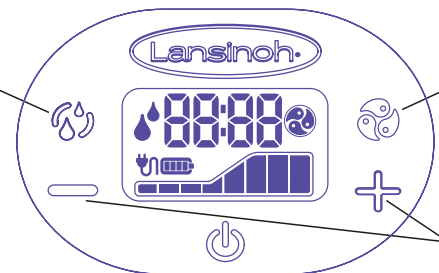
双阶段技术 吸乳准备阶段和吸乳阶段

按下电源开关按钮 , 吸奶器将会启动并进入吸乳准备阶段。 

吸乳准备阶段将会自动运行两分钟。

要想更快地进入吸乳阶段, 按下“吸乳准备 / 吸乳”切换按钮  以切换到吸乳阶段。任何时候再次按下“吸乳准备 / 吸乳”切换按钮, 可返回到吸乳准备阶段。

吸乳准备 / 吸乳
切换按钮




吸乳模式
切换按钮

吸乳强度按钮

舒适度和效率自定义

吸乳模式选择

每个宝宝的吸乳方式各不相同。细语智能双边电动吸奶器有三种吸乳模式设置, 方便您选择最接近您的宝宝的吸乳模式。使用吸乳模式切换按钮  调节吸乳模式, 找到您感觉最舒适的吸乳模式。





模式 1

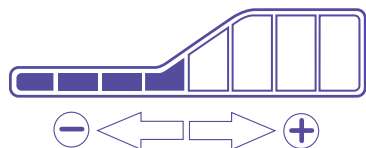
模式 2

模式 3

注意: 当您第一次使用本吸奶器时, 初始设置为吸乳准备阶段, 吸乳强度 5。切换至吸乳模式后, 吸奶器将启动并在吸乳模式 2、吸乳强度 3 开始运行。

调节吸乳强度

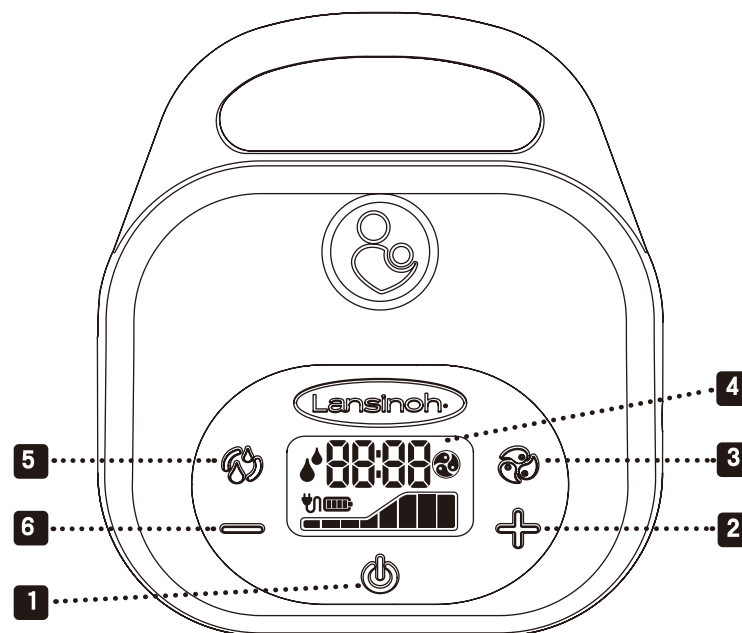
增强或降低至您感到舒服的吸乳强度。按下  按钮即可增强吸乳强度。按下  按钮即可降低吸乳强度。



注意: 增强吸乳强度时, 选定吸乳强度指示灯闪烁, 吸奶器将缓慢增强至该吸乳强度。在达到设定的吸乳强度后, 指示灯停止闪烁。

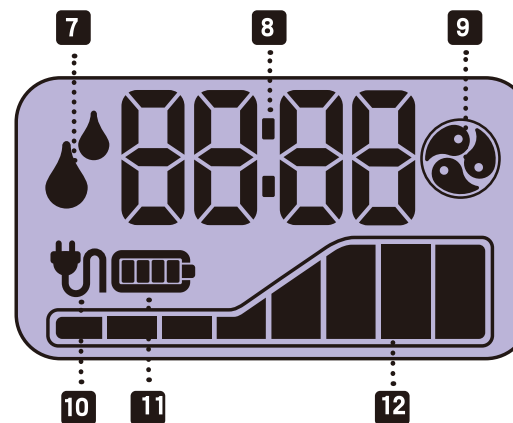
兰思诺® 为您提供支持。如有任何问题, 请在北京时间周一至周五的上午 9 点 - 下午 5 点半拨打电话 400-821-0385, 联系我们。

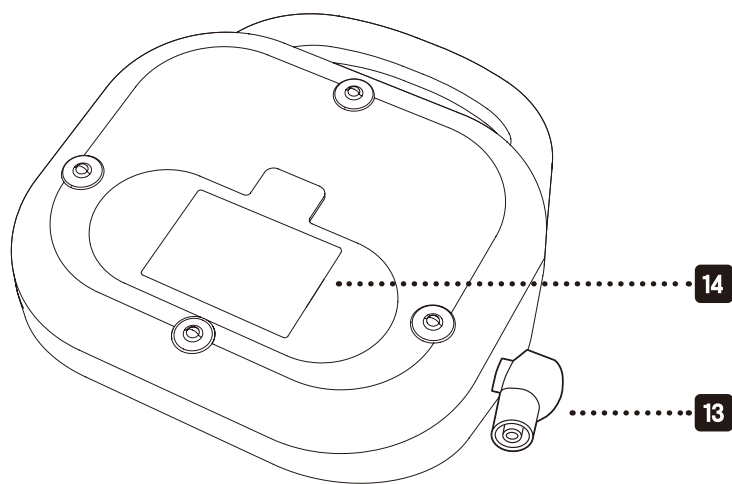
2. 吸奶器示意图



2.1 控制按钮、显示屏和功能

- | | |
|--------------------|---------------------|
| 1. 电源开关按钮 | 7. 吸乳准备阶段 / 吸乳阶段指示灯 |
| 2. 增强吸乳强度控制按钮 | 8. 时间显示 |
| 3. 吸乳模式切换按钮 | 9. 吸乳模式指示灯 |
| 4. LCD 显示屏 | 10. 交流电源指示灯 |
| 5. “吸乳准备 / 吸乳”切换按钮 | 11. 电池指示灯 |
| 6. 降低吸乳强度控制按钮 | 12. 吸乳强度指示灯 |





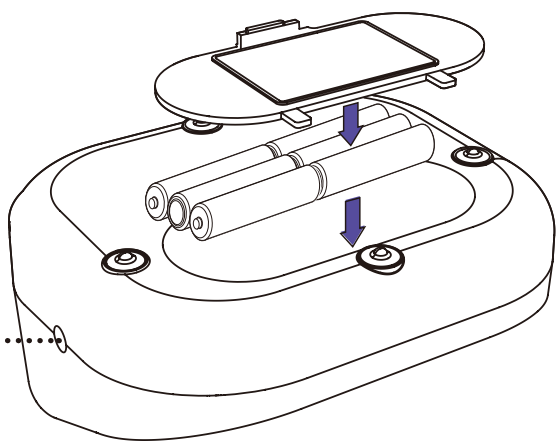
14

15

13. 导管接口

14. 电池盒, 6 节 AA 电池 (不含)

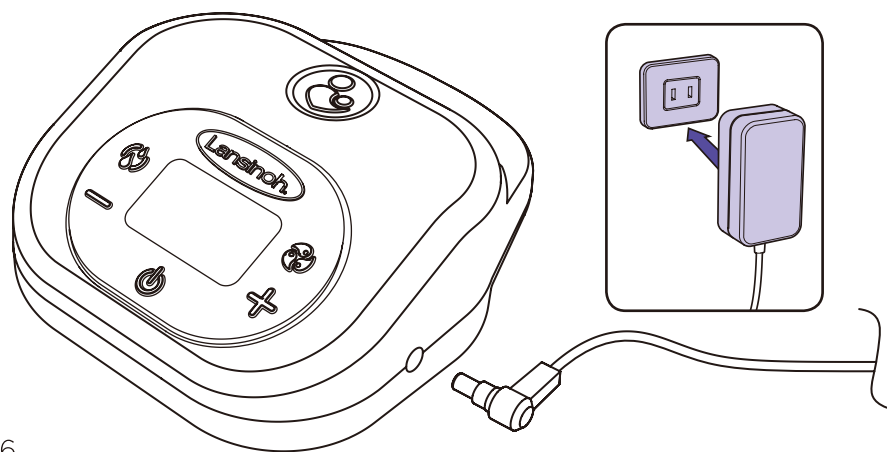
15. 交流电源适配器插孔



15

交流电源适配器

AA 电池盒
(吸奶器下方)

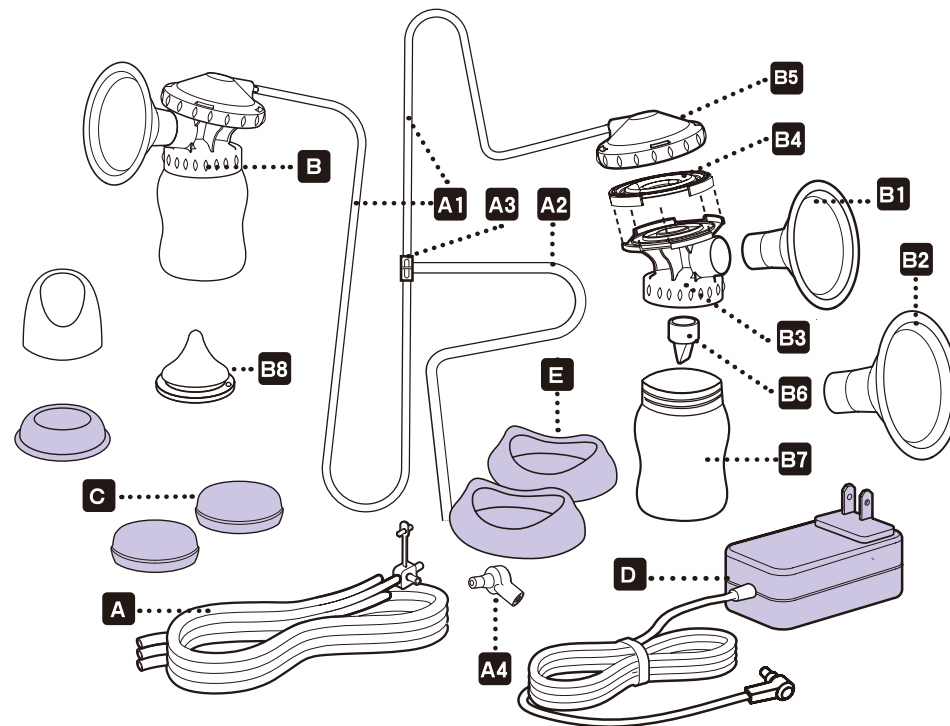


2.2 兰思诺® 细语智能双边电动吸奶器部件

部件

部件货号

- A. 吸奶器导管 #53403
 - A1 300mm 硅橡胶导管 (2)
 - A2 600mm 硅橡胶导管
 - A3 吸奶器 Y 型导管接口 #53405
 - A4 吸奶器导管接口 #53453
- B. 吸乳部件包括:
 - B1 25mm ComfortFit® 舒适贴合乳杯 (2) #50408
 - B2 30.5mm ComfortFit® 舒适贴合乳杯 (2) #50408
 - B3 吸奶器本体 (2) #53454
 - B4 隔膜 (2) #53402
 - B5 隔膜盖 (2) #53410
 - B6 白色吸奶阀 (2+2 个备用) #53401
 - B7 160ml 奶瓶 (2) #53451
 - B8 自然波浪系列奶嘴 (s) (1) #71027
- C. 瓶盖 (2) #53450
- D. 电源适配器 / 电源线 #50409
- E. 底座 (2) #53452



含2个备用白色吸奶阀。
如欲订购替换配件，请联系 400-821-0385

警告：为防止交叉污染/感染，吸奶器导管和吸乳部件绝不可由多人共用或者转售。每位妈妈应当使用自己专属的吸奶器导管和吸乳部件。

3. 清洁说明

除非您的医疗保健人员有其他建议，否则应遵守本说明书中给出的消毒和清洁说明。

警告：为防止交叉污染/感染，吸奶器导管和吸乳部件绝不可由多人共用或者转售。每位妈妈应当使用自己专属的细语智能双边电动吸奶器。

切勿清洗导管或接口！

消毒前，请添加足够多的水让所有部件都能获得自由浮动的空间！

3.1 首次使用前清洗吸乳部件

1. 操作吸乳部件前，使用肥皂水仔细洗手并擦干。
2. 拆解吸乳部件，然后将各部件放在一个大锅内。
3. 向锅内加入足够多的水，让所有部件都能获得自由浮动的空间。
4. 水烧开，将这些部件煮5分钟。
5. 然后，使用夹钳将部件从锅内取出，放到一块干净的毛巾上，然后将第二块毛巾覆盖到部件上。
6. 在组装和使用前，要让各部件完全晾干。如果只是部分晾干，可能会影响吸奶器的工作。
7. 部件晾干后，可将其存放到一个干净的带盖塑料盆或拉链式塑料袋中。

3.2 每次使用后吸乳部件的清洁与消毒

1. 拆解吸乳部件，将导管和接口放在一旁。
2. 每次使用后立即用温水冲洗所有部件。将各个吸乳部件放置在一个干净的清洗盆中，且这个盆只能用于清洗宝宝的喂养产品。切勿将吸奶器部件直接放到水槽中，因为水槽或下水管中的细菌可能会污染吸奶器。
3. 使用温和专用的清洗剂手动清洗与乳汁接触的所有部件。对于吸乳部件中较硬的塑料件，可使用奶嘴刷来擦洗，但不可将其用于柔软的吸奶阀或隔膜。
4. 用洁净、流动的温水冲洗部件或将其浸入到盛有清水的盆中，该盆专门用来清洗宝宝的喂养产品。
5. 将吸奶器部件放到无尘无灰区域中的一块干净且没有使用过的洗碗布或者纸巾上。切勿使用洗碗布擦拭或拍干部件上的水。在组装和使用前，要让各部件完全晾干。如果只是部分晾干，可能会影响吸奶器的工作。
6. 部件晾干后，可将其存放到一个干净的带盖塑料盆或拉链式塑料袋中。

7. 清洗塑料盆和瓶刷。每次使用后冲洗干净，然后将其自然晾干。至少每隔几天用手或者放入洗碗机中清洗一次。

吸乳部件的日常消毒：

1. 将干净的部件放入锅内并用足够多的水浸没，让所有部件都能获得自由浮动的空间。
2. 水烧开，将这些部件煮5分钟。
3. 然后，使用夹钳将部件从锅内取出，放到一块干净的毛巾上，将第二块毛巾覆盖到部件上。将塑料盆和瓶刷部件放到无尘无灰区域中的一块干净且没有使用过的洗碗布或者纸巾上。切勿使用洗碗布擦拭或拍干部件上的水，以免使细菌进入部件中。
4. 在组装和使用前，要让各部件完全晾干。如果只是部分晾干，可能会影响吸奶器的工作。
5. 使用电子蒸汽消毒器时，请遵照其说明书要求进行。确保部件开口都向下。消毒完毕后，请先洗净双手再取出产品。

3.3 每次使用吸乳部件前

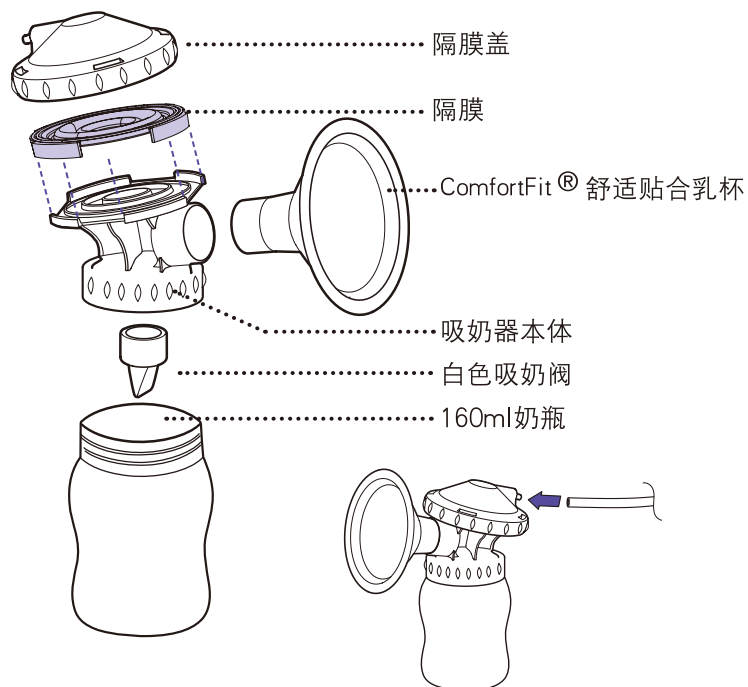
1. 每次操作吸乳部件前，都要使用肥皂水仔细洗手并擦干。
2. 组装吸乳部件前，确保所有部件均完全晾干。
3. 目视检查各部件有无开裂、碎屑、撕损、褪色或老化。这些问题可能会影响吸奶器的正常功能。
4. 检查导管。如果发现导管中有凝结水珠，立即清洗并晾干或者更换导管。如果发现导管内或导管接口上有乳汁，切勿尝试清洗、清洁导管或导管接口或对其进行消毒。请联系兰思诺® 400-821-0385。
5. 如果您对部件存在任何疑问或问题，请拨打 400-821-0385 联系兰思诺® 并获得进一步指导。
6. 如欲购买吸奶器更换部件，请拨打 400-821-0385。

注意：不建议使用除了以上消毒方式之外的其他消毒方式。

注意：清洗吸奶阀时应小心谨慎。吸奶阀对于吸奶器的使用十分重要。清洗吸奶阀时不要过于用力。不要使用奶瓶刷或者奶嘴刷去清洗。在温热的清洗液中用手清洗。并用流动的温水冲洗干净。

4. 装配

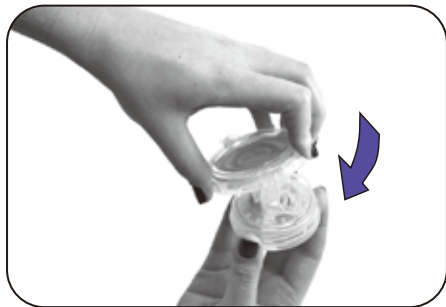
4.1 组装吸乳部件



1. 将紫色隔膜柱脚朝下放在吸奶器本体顶部。确保紫色隔膜柱脚正好安装到本体的空隙处。



2. 将透明隔膜盖放在吸奶器本体上后转动，以使导管接口朝向吸奶器背部。



3. 将ComfortFit® 舒适贴合乳杯装入吸奶器本体。



4. 握住白色吸奶阀底部，轻柔地将白色吸奶阀装入吸奶器本体底部。

注意：请小心拿取和清洗小的白色吸奶阀。



5. 将奶瓶旋入吸奶器本体。



6. 将300mm导管插入隔膜盖背面并牢牢固定。确保把导管推入到隔膜盖端口底部并且完全推入。



7. 将300mm导管的另一端安装到Y型导管接口。



8. 重复上述组装过程，完成第二个吸奶器本体安装。

4.2 连接吸乳部件

在吸乳部件组装完毕后，将其连接到吸奶器底座上：



1. 将600mm导管的一端连接至Y型导管接口。



2. 将600mm导管的另一端紧固到吸奶器导管接口。



3. 把吸奶器导管接口插入到吸奶器左侧的开口处。

4.3 单边吸乳的连接



1. 从Y型导管接口上拆下300mm导管的一端。



2. 将插塞插入到Y型接口的出口。

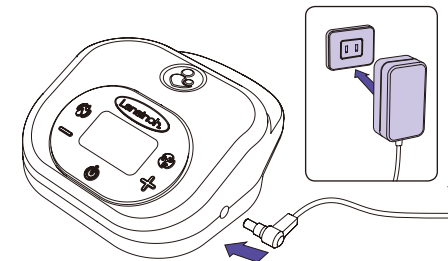
5. 使用兰思诺® 细语智能双边电动吸奶器

5.1 电源选项

吸奶器可采用以下供电模式运行：

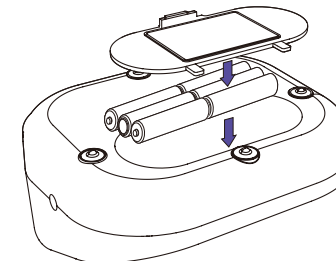
交流电源适配器

1. 将电源适配器接到吸奶器右侧的电源插孔上。将电源适配器另一头接到电源插座中。
2. 仅当使用产品随附的电源适配器时，才能保证吸奶器的电气安全。（参见第23页“技术数据”部分）



AA碱性电池（不含）

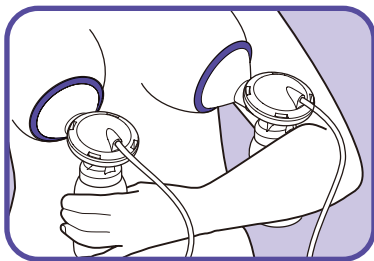
1. 确保根据指示正确连接电池的正极（+）和负极（-）。
2. 轻轻地按下电池盖，直到卡到位。
 - 吸奶器长期不用时，请取出电池。
 - 请根据环保和回收利用相关法规处置电池。
 - 所有电池需同时更换。新旧电池不可混用。
 - 碱性电池和标准（碳性）电池不可混用。
 - 如果在吸奶器内安装有电池且使用电源适配器时，吸奶器将使用电源适配器供电，不会使用电池。



建议使用随附的电源适配器，以获得更高的经济性。随附电源适配器为通用型交流插头式适配器，可用于电压为100V—240V且频率为50Hz和60Hz的电源。

5.2 入门指南

如果可能的话,在您能够顺利给宝宝亲喂,出现奶涨情况之后再开始用吸奶器吸乳。通常是在宝宝出生后至少 3-4 周,除非医疗保健人员给出其它建议。



1. 将吸乳部件紧贴到乳房上,确保乳头直接对准伸向乳杯的乳杯通道。
2. 确保乳房完全贴在乳杯中,确保形成密闭环境,不会跑气。
3. 吸乳部件和乳杯通道必须稍微向下倾斜,让乳汁自然流向奶瓶。

兰思诺的乳杯尺寸有两款,一款的乳杯通道直径为 25mm, 一款的乳杯通道直径为 30.5mm。如果乳头感觉到摩擦或不适,请更换另一个尺寸的乳杯。可以使用较大尺寸的乳杯。如欲了解更多信息,敬请致电 400-821-0385 或访问 www.Lansinoh.cn 或微信: Lansinoh520

5.3 具有自动记忆功能的双阶段技术

吸乳准备阶段和吸乳阶段

1. 长按开/关按钮数秒,以启动吸奶器。兰思诺® 细语智能双边电动吸奶器启动后将立即进入吸乳准备阶段。

注意:当您第一次使用本吸奶器时,初始设置为吸乳准备阶段,吸乳强度5。

2. 2分钟后,吸乳准备阶段将自动切换至吸乳阶段。

注意:当首次切换至吸乳阶段后,吸奶器将从吸乳模式2、吸乳强度3开始运行。

3. 如果您想要跳过预设的2分钟吸乳准备阶段,或者您的奶阵提前到来,可按下吸乳准备/吸乳切换按钮并切换至吸乳阶段。
4. 自动记忆功能将保存每个阶段的上一次吸乳模式和吸乳强度。但是吸乳强度将逐渐恢复至上次使用的设置,以带来更加舒适的吸乳体验。

显示屏出现吸乳模式指示灯时,表示目前处于吸乳阶段。

5.4 舒适度和效率自定义

使用自定义吸乳模式

选择您的吸乳模式

每个宝宝都是独一无二的,吸乳方式也同样各有不同。兰思诺® 细语智能双边电动吸奶器共有三种不同的吸乳模式,您可以选择最接近您宝宝的吸乳模式。

	吸乳模式1	
	吸乳模式2	
	吸乳模式3	



1. 吸奶器处于吸乳阶段时,选择您感觉最舒适和高效的吸乳模式,可按下吸乳模式切换按钮 。
 2. 再次按下切换按钮,可以选择下一个吸乳模式。
- 注意:吸乳模式切换按钮只有在吸奶器处于吸乳阶段时才会启动。
3. 选定的模式将通过吸乳模式指示灯在 LCD 显示屏中显示。

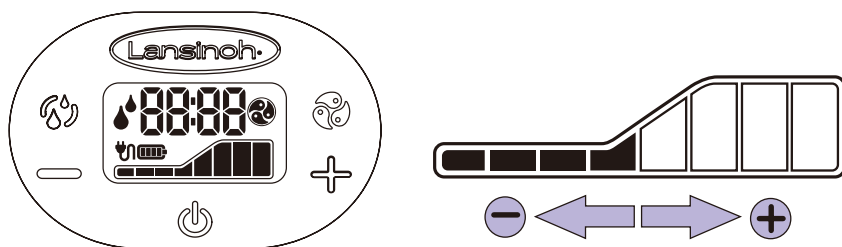
随着宝宝的成长,您可能会发现宝宝吸乳模式在变化。细语智能双边电动吸奶器具有模式和强度的调节功能,方便根据需求调节设置,让您始终能获得理想的吸乳结果。

5.4 舒适度和效率自定义(续)

舒适度调整


在各个吸乳模式下，共有8个吸乳强度可选：

1. 按下增强吸乳强度控制按钮 ，可以加强吸乳强度。
当吸奶器切换至更高的吸乳强度后（在某个模式内或者切换模式时），选定的强度指示灯会闪烁。吸奶器将缓慢过渡到更高的吸乳强度。在达到选定的吸乳强度后，指示灯停止闪烁。
2. 按下降低吸乳强度控制按钮 ，可以调低吸乳强度。
3. 深色竖条的数量显示当前所提供的吸乳强度。



注意：如果在任何时候您的乳房感觉到不舒服，请按LCD屏左侧的  按钮降低吸乳强度，或者将导管从双边电动吸奶器主机上断开。

5.5 完成吸乳操作

1. 吸乳完成后，可通过开关按钮  关闭吸奶器。
2. 在关闭吸奶器电源后，显示屏仍将持续亮起数秒。
3. 确保乳头上没有吸力之后方可将乳杯从乳房上取下。必要时，可将手指插到乳杯与乳房之间，以消除吸力。吸力一旦消除，可安全取下乳杯。

请注意：如果20秒内未对控制按钮执行任何操作，LCD 显示屏背光灯将自动关闭，以节省电量。如果吸奶器保持开启状态且无人操作超过60分钟，将会自动关停。如需重新开启，必须长按开关按钮数秒。

6. 吸乳操作提示

吸乳操作提示

成功吸乳最重要的是要能刺激喷乳反射，之后乳汁才能自由流出。在吸乳之前和吸乳中用热的湿毛巾热敷乳房，并以画圈的方式轻柔按摩，有助于刺激自然喷乳反射。如果在您与宝宝分开后需要吸乳，可以想象宝宝或者看看宝宝的图片，这同样有所帮助。有些妈妈在吸乳时会有多次喷乳反射。通过“吸乳准备 / 吸乳”切换按钮返回到吸乳准备阶段，您可以再次刺激喷乳反射。

吸乳时间

母乳属于按需产生。与单边吸乳相比，双边吸乳能缩短吸乳时间。

定期分泌乳汁可以刺激您的身体，帮助维持母乳供应。和母乳喂养一样，不一定要计算您的吸乳时间。随着您吸乳经验的积累，您将更好地掌握使用吸奶器吸乳的时间。如果您在母乳喂养或吸奶器方面存在疑问，可向兰思诺客服中心 400-821-0385 咨询。

吸乳与喂养提示

- 您可以在用一侧乳房给宝宝哺乳的同时，对另一侧乳房进行吸乳。这样可以利用宝宝的吮吸来刺激喷乳反射，从而提高吸乳效率。
- 如果使用奶瓶喂养宝宝，喂奶前务必检查母乳的温度。
- 切勿让宝宝喝着奶入睡或者在没有监督的情况下自己喝奶。
- 为防止窒息危险，应拉动奶瓶的奶嘴部分，测试其强度。如果有任何裂缝或裂纹，请立即停止使用。

7. 故障排查

对兰思诺® 细语智能双边电动吸奶器进行故障排查。

断电维修

如果在吸乳时发生电源变化，兰思诺® 细语智能双边电动吸奶器会自动停止吸乳过程。

比如拔下电源适配器或者在使用电池吸乳时插入电源适配器。

这一安全功能是为了防止吸乳强度突然改变。如果在吸乳过程中，由于您中途更换供电方式，吸奶器停止运行，只需按下开关按钮重新启动吸奶器即可。

如果吸奶器的电气和/或机械功能在正常运行中突然中止，只需做如下操作：

- 检查电源线仍然插在吸奶器中和插座上。如果使用电池，检查6节电池全部插入且均未松开。
- 如果电源线或电池断开，重新接上，然后长按开关按钮2秒，重新启动吸奶器。
- 如果吸奶器停止工作但是适配器或电池连接良好，请拨打电话**400-821-0385**或者发送电子邮件至**customerservice@lansinoh.cn**，联系兰思诺客户服务中心。

吸乳时感到不适

如果您有任何不适，可能需要更换一个不同尺寸的乳杯。敬请访问 www.Lansinoh.cn 或微信：**Lansinoh520**，或者致电**400-821-0385**。

吸力下降

如果觉得吸力变小，可尝试如下操作：

- 将导管从吸奶器本体上拆下，将手指放在导管接口处。
- 如果能感觉到吸力，则说明吸奶器正常工作，但吸乳部件可能没有正确组装或白色吸奶阀受损。
- 确保吸乳部件正确组装。请查看第12-14页“组装吸乳部件”中的组装信息。
- 检查白色吸奶阀有无撕损或小孔。该零部件对于获得正常吸力来说至关重要。如有破损、变形、裂缝，请更换白色吸奶阀（产品随附有备用吸奶阀）。

- 如果手指感觉不到吸力，请尝试将电源适配器从插座中拔出，等待几秒钟后再插回插座中。
- 进行单边吸乳时，请检查吸奶器导管中段的Y型导管接口，确保Y型导管接口的其中一边已关闭。如果接口打开，请关闭。
- 进行双边吸乳时，开始吸乳前请确保将吸乳部件紧贴两侧乳房。

单边吸乳时吸乳强度增强

单边吸乳时如果感到吸力过大，请检查导管接口是否干净，且接口内的气道是否堵塞。

8. 母乳保存指南

用于喂养正常足月婴儿的母乳保存与解冻指南

可向兰思诺客服中心(**400-821-0385**)咨询具体的保存方法。冷藏母乳时，将母乳保存在冰箱 / 冰柜后部，切勿将母乳保存在冰箱 / 冰柜门内侧。门内侧的温度是冰箱 / 冰柜内温度最高的部分。

用于喂养正常足月婴儿的新鲜母乳保存指南

地点	温度	时间	注意事项
桌面	室温（最高25°C）	最长4小时	奶瓶应当盖好并且尽可能保持凉爽。用干净的凉毛巾覆盖奶瓶，可以进一步降低乳汁温度。在宝宝喂奶后2小时内将任何剩余的乳汁倒掉。
冷藏室	4°C	最多4天	将母乳存放在冰箱的后部。上班期间吸乳后，可以把母乳保存在公用的冰箱中。务必在奶瓶上明确地贴上标签。
冷冻室	-18°C	6个月内最佳，最长12个月	把母乳存放在冷冻室靠后部分，该处温度最稳定。在零下18°C或以下可以安全地较长时间地存放母乳，但是母乳的品质可能会有所降低。

信息来源：摘自第7版美国儿科学会(AAP)儿科营养手册(2014年)；第2版美国儿科学会 / 美国妇产科医师协会(ACOG)母乳喂养妇产科医生参考手册(2014年)；母乳喂养医学会(ABM)临床方案8足月婴儿家用母乳存储信息(链接为外部)(2017年)；美国疾病预防控制中心母乳存储指南(2018年)。

记下所有母乳的吸乳日期，应先挑选日期最早的母乳。

解冻

将冷冻的母乳先放置于冰箱冷藏室解冻或将容器置于流动的凉水下，逐渐使水变暖，以解冻母乳。解冻后的母乳可在冰箱冷藏室内存放，但存放时间不能超过24小时。

注意：
请勿重新冷冻已解冻的母乳。

母乳不是均质的，静置一段时间后可能会分层。用解冻后的母乳哺喂宝宝前，请轻轻摇晃奶瓶，以混合分层的母乳。母乳的颜色和浓度因吸乳时间、您的饮食、以及吸乳时宝宝的月龄而存在个体差异。

注意：切勿使用微波炉加热母乳！微波会改变母乳的成分。微波还会导致母乳局部过热，可能烫伤宝宝。
注意：请勿在热水或沸水中解冻母乳。

9. 兰思诺® 奶瓶和自然波浪系列奶嘴

自然波浪系列奶嘴能让宝宝自然地吸乳。

如果可能，建议在使用奶瓶和奶嘴喂养前，至少纯母乳喂养 3—4 周。



含接
宝宝的嘴唇向外开，将乳晕部分完全覆盖



利用舌头的运动将乳汁吸出(吸吮)
借助舌头如波浪般的运动，挤压乳头以吸出乳汁



吞食饮入
宝宝的舌根向上抬，乳汁向食道流入

储存和使用

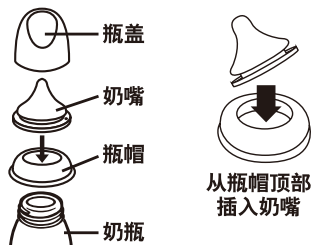
使用前，始终要检查奶嘴并把奶嘴朝各个方向拨动以检查是否完好。丢掉有破损或缺陷的产品。为了安全和卫生起见，请每 7 周更换一次奶嘴。

清洁

在首次使用前，将清洗干净的部件放入沸水中煮 5 分钟。确保所有部件完全浸没水中。每次使用后，请马上清洗所有部件。可以放入温热的温和专用的清洗剂水中清洗奶嘴，然后用干净水冲洗。使用洗碗机清洗时，只有放在上层洗碗架上才是安全的。切勿使用溶剂或刺激性清洁剂。

组装

在彻底晾干后，从瓶帽顶部插入奶嘴。将瓶帽拧紧到瓶颈上。从吸奶器上取下装满母乳的奶瓶时，确保用瓶帽旋盖好，注意把奶嘴放入瓶帽的中间可以起到“防泼洒”的作用。



注意事项

切勿将奶瓶放在阳光直射、受热的地方或接触消毒液，以免降低奶嘴性能。切勿用溶剂或刺激性清洁剂清洁奶嘴或者使奶嘴接触此类化学物质。以免造成损坏。加入所需的母乳量，拧紧瓶盖。切勿过满。

不建议使用微波炉加热，这样可能会造成受热不均匀和局部高温。如果使用微波炉加热除母乳外的其他液体，切勿密封奶瓶。

使用前请摇匀，始终要检查乳汁温度然后才能喂宝宝。乳汁过热或者受热不均匀会烫伤宝宝的嘴唇。切勿将奶瓶直接放到煤气灶或电磁炉、加热盘、电烤箱等中加热母乳。请每次使用后进行清洗。有些液体和消毒液可能会使硅橡胶奶嘴不透明，这不会影响其特性。

警告！

切勿使用微波炉加热母乳！微波会改变母乳组成成分，而且还可能导致母乳局部过热烫伤宝宝。在正常进食后较长时间或者睡前使用奶瓶喝奶可能造成龋齿。不得在无人监督情况下让宝宝自己使用奶瓶喝奶。将所有不使用的部件放到儿童接触不到的地方。切勿让宝宝自己使用奶瓶，以免造成窒息。绝不可把奶嘴用作安抚奶嘴。始终要在喂奶前检查母乳的温度。

10. 技术数据

1. 电源

电池运行：6 节 AA 碱性电池(不含)，全部串联。请勿使用充电电池供电。

运行时间：至少可以持续工作 30 分钟。最长 2 小时。具体取决于电池有效期和吸奶器设置。

交流电源适配器运行：100V—240V 壁式插座型交流电源适配器，输出电压为 9V 直流电。

吸奶器功耗：最高 10W

电压调节：线性稳压器，带低回动电压和短路保护。

2. 控制系统

控制单元：微控制器，带一体式程序内存。

程序内存：32K 闪存(ROM)，2K 内存(RAM)。

人机界面：LCD 显示屏，带 LED 背光、软按键面板。

单 / 双控制：单 / 双边吸乳。

可选吸乳模式：3 种吸乳模式可选并且通过按键面板控制。

可调式吸乳强度：8 种吸乳强度可选并且通过按键面板控制。

真空吸力(双边吸乳，吸乳阶段)：最小 100 mmHg，最大 280 mmHg。

吸乳频率：吸乳准备阶段最大吸乳频率 134 次 / 分钟，吸乳阶段最大吸乳频率 96 次 / 分钟。

技术数据

蓝牙版本 4.1

10 米内

型号核准代码请参考吸奶器电动本体背部的贴纸。

电力要求

电源适配器(含)

交流电源适配器——中国

插头配置

100V-240V 壁式插座型

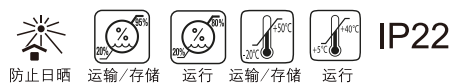
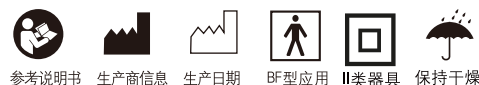
电源适配器, 输出电压为 9V 直流电。

电池(不含)6 节 AA 电池, 1.5V 碱性电池

合规

吸奶器的预期使用期限为 500 小时。

合规性

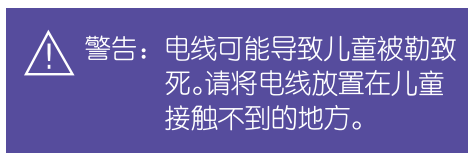


按照以下说明保养电源适配器:



切勿将电源适配器电线缠绕到插座上。 正确 切勿拉扯电线拔出电源适配器。 正确

切勿使用损坏的电源适配器。



11. 售后与质保

消费类产品有限质保(中国)

我们对原始购买者(简称“购买者”)承诺,本产品没有任何材料和工艺缺陷,吸奶器(吸奶器主体马达)自购买之日起保修一年,所有其他部件自购买之日起保修 90 天。

本保修仅适用于在中国官方授权渠道购买且在中国境内运输部件的产品。如果您(1)转售或转让本产品给他人;(2)错误地对本产品进行任何保养或维修;(3)使用任何非兰思诺®品牌更换部件;或者(4)误用、滥用或改装本产品,则本保修无效。

本保修条款将赋予您一些特定的法律权限,具体因地而异。

除此明确说明的保修条款以外,兰思诺®不会提供任何类型的明示或暗示保证。

任何暗示保证,包括任何对适销性和特定用途适用性的暗示保证,其有效期为自原始购买者购买之日起 90 天内。

兰思诺®证实产品满足以上有限保修条款时,购买者可获得的补偿是由兰思诺®维修或更换产品(由兰思诺®决定),且不向购买者收取任何有关更换、部件或人工费用。

中国以外不提供任何更换或维修服务。

注意: 将产品返回兰思诺®的费用应由购买者全权承担。

兰思诺®母乳喂养产品仅推荐使用兰思诺®品牌的零部件。

在法律规定范围内,对于附带补偿损失或间接损失,包括但不限于违反任何书面或暗示质保条款所引起的更换成本,兰思诺®不承担任何责任。

如您想依据本保修条款提出索赔,必须将本产品以及带有日期的原始购买凭证或其他带有日期的购买证明及索赔依据一同返回至尔儿诗(上海)商贸有限公司。请致电或发送电子邮件至以下地址,将有客服为您处理。

返回的产品如果无相应凭证或依据则将退还给寄件人。

兰思诺客服中心:

400-821-0385 | customerservice@lansinoh.cn

12. 产品部件表

部件	数量	材质	材质耐热温度	材质执行标准	消毒方法	
300mm 硅橡胶导管	2	硅橡胶	-	-	-	非食品接触用
600mm 硅橡胶导管	1	硅橡胶	-	-	-	
Y 型导管接口	1	PP(CAS 号:9010-79-1)	-	-	-	非食品接触用
导管接口	1	PP(CAS 号:9010-79-1)	-	-	-	
ComfortFit 舒适贴合乳杯(标准尺寸)-乳杯部分	2	PP(CAS 号:9010-79-1)	120°C	GB4806.7	煮沸蒸汽微波炉	食品接触用
ComfortFit 舒适贴合乳杯(标准尺寸)-紫色贴合圈*		热塑性弹性体		-		非食品接触用
ComfortFit 舒适贴合乳杯(加大尺寸)-乳杯部分	2	PP(CAS 号:9010-79-1)	120°C	GB4806.7	煮沸蒸汽微波炉	食品接触用
ComfortFit 舒适贴合乳杯(加大尺寸)-紫色贴合圈*		热塑性弹性体		-		非食品接触用
吸奶器本体	2	PP(CAS 号:9010-79-1)	120°C	GB4806.7	煮沸蒸汽微波炉	食品接触用
隔膜	2	硅橡胶	120°C	GB4806.11		
隔膜盖	2	PP(CAS 号:9010-79-1)	120°C	GB4806.7		
吸奶阀(2+2 个备用)	4	硅橡胶	120°C	GB4806.11		
自然波浪奶瓶(160ml)	2	PP(CAS 号:9010-79-1)	110°C	GB4806.7		
瓶盖	2	PP(CAS 号:9010-79-1)	120°C			
瓶帽	1	PP(CAS 号:9010-79-1)	120°C			
透明瓶盖	1	PP(CAS 号:9010-79-1)	120°C			
自然波浪奶嘴(S)	1	硅橡胶	120°C	GB4806.2		
底座	2	PP(CAS 号:9003-07-0)	-	-	-	非食品接触用
电动本体/适配器/电源线	各1	-	-	-	-	

* 本产品中与食品接触部件符合GB4806系列对应的食品安全国家标准。
紫色贴合圈在实际使用中不作为食品接触部件。

原产国: 土耳其

进口商: 尔儿诗(上海)商贸有限公司

地址: 中国(上海)自由贸易试验区富特北路 456 号南楼五层 533 室

说明书发布日期: 2021 年 7 月



说明书版本: 第二版

检验合格

制造商: 兰思诺实验室 Saglik Gerecleri Tasarim San.Tic.Ltd.
Sti.Zafer SB Mah.Gunduz Sk.No:13 E.S.B Gaziemir/Izmir/Turkiye
© 2021年兰思诺实验室有限公司,美国弗吉尼亚州亚历山德里亚

©2021Lansinoh® Laboratories, Inc. Alexandria, VA. USA

DE53251IF0721

