

PHILIPPA BENTLEY

ULTRAMARINE

14th- 28th FEBRUARY

Philippa Bentley is a multi-disciplinary artist whose work has been reviewed as "highly unusual and utterly delightful".

Philippa's work is usually inspired by nature, often with a twist.

Philippa grew up with a large, rambling garden - fascinated by insects, damming ponds in the creek and building huts in the bush. Apparently it was where her parents could always find her- any time of day, any weather.

"I love the idea of retaining a sense of wonder in the world."

Philippa has always lived close to the sea and now spends much time on the water, too, sailing.

It is not surprising that Philippa's artwork has been inspired by these experiences and reflects the careful observation of the natural world through her detailed drawings, prints and paintings, usually imbued with an additional layer of contemplation- the social, cultural and ecological- which Philippa aims to communicate through her art.

While primarily known as a painter and printmaker, Philippa has a growing interest in the intersection of art, design, science and technology and the possibilities this brings. She has been incorporating Augmented Reality in to her art practice since 2014.

Philippa has two senior academic prizes from the University of Auckland but she has drawn, painted and written since she can remember and ultimately committing to a career as an artist always felt like her natural path. She has been working professionally as an artist for about 15 years. Philippa has won awards in painting, printmaking and design, and been a finalist in a number of national and international awards. She exhibits regularly and her work is held in collections in NZ and abroad.
www.philippabentley.com



"Ultramarine" refers to both 'ultramarine blue', a paint colour I've used extensively in my paintings, and to the focus on the sea. The sea is the link.

New Zealand begins with the sea and ends with the sea.

Auckland itself is an isthmus, on an island, such a narrow piece of land squeezed by two harbours lapping. St Heliers sits at the sea's edge and faces out to Rangitoto, Browns Island, the Hauraki Gulf.

Living in Auckland, we all have a relationship with the sea. We live on islands. We are all islanders.

And so it is perhaps inevitable that it informs my work and this has had an increasing sense of urgency for me with climate change and rising, warming oceans and the myriad of interwoven consequences of this. Everything is interrelated and we are part of nature, not separate from it.

"...art is pivotal to our response to climate change.....The arts help us to feel, rather than just know about an issue. A dance, song, film or painting is experienced viscerally, activating different senses, recruiting different parts of our brain and nervous system to generate a response. An artist communicates directly with another human being." - Carla van Zon

Listen to the sea, it has something to say to you.

TURUA
GALLERY
CURATED CONTEMPORARY ART
@turuagallery

PHILIPPA BENTLEY

ULTRAMARINE

14th- 28th FEBRUARY

The 'Soar' Paintings

Big sky. Big sea. Big space. Big calm.
The simplicity is deliberate and its effect calming and uplifting.

This series of paintings came out of my own need for a sense of space and calm and beauty in the world, in troubled times. I began to feel overwhelmed by news of the dire state of the natural and political landscape and this series of paintings became my response- watching seabirds glide, flow and soar gives me such a feeling of space and calm. My aim is to share that same feeling with you, the viewer.

Paper Seas. Paper Boats.

A paper boat at sea conveys an image of fragility or vulnerability effectively reminding that our seas are in need of care. An array of diatoms on the inside surfaces of the boat see it become a protective vessel, an ark.

Diatoms are small but mighty phytoplankton with beautiful shells of silica- fascinating algae that live in intricate glass houses. They play important ecological roles on a global scale as, through carbon fixation, diatoms remove carbon dioxide (CO₂) from the atmosphere (they take more carbon out of the atmosphere than all the world's tropical rainforest), and they produce a significant proportion of the world's oxygen- in fact they liberate enough oxygen for our every fifth breath.

Maps and sea charts record the explored, known world reassuring us- we know where we're going. However, with climate change and warming, acidifying oceans we are currently heading in to the unknown, in to uncharted waters. Hic sunt dracones!

'Here Be Dragons' was marked on early maps and sea charts to signify uncharted territory, the great vast scary Unknown.

The future is unknown, uncertain, but I refuse to paint an apocalyptic vision- it will be different but it may yet be beautiful.

Sea charts are beautiful objects in themselves and each has a story to tell. I am developing a growing body of work painting and printing on to the charts, at times with native fauna and at times with my own 'dracones'.

The dolfish becomes the artist's AR signature, signifying the unfamiliar and what we may discover there.

The 'Connect' Paintings- the snorkellers

This series of paintings is a reflection on our connection with nature. We are part of nature, not separate from it. Everything is interconnected. I am using the image/symbol of the snorkeller as one who is literally immersing themselves in the natural environment... and will discover a world of beauty there not visible from above. The sea is alive. This immersion is taken a step further through moving image* layered in to the work through augmented reality. *artists own video content.

PHILIPPA BENTLEY ULTRAMARINE

14th- 28th FEBRUARY



1. Soar VII Summer Skies

Acrylic on canvas
H 700mm x W 900mm
\$2,900



2. Soar VI Ocean Glider

Acrylic on canvas
H 750mm x W 1000mm
\$3,100



3. Soar VIII Summer Horizon

Acrylic on canvas
H 1000mm x W 1000mm
\$3,800



4. Fairy Tern

Acrylic on canvas
H 750mm x W 750mm
\$2,900



5. Little Adventurer and Whale, NZ 5121 Chart

Acrylic paint and printing ink on sea chart, in glass case
H 180mm x W 600mm x D 140mm
\$1600



6. Bean Rock Lighthouse and Dolphins, NZ 5322 Chart

Acrylic paint and printing ink on sea chart, in glass case
H 180mm x W 600mm x D 140mm
\$1600



7. Gannet and Kingfisher

Acrylic paint and printing ink on sea chart, in glass case
H 180mm x W 600mm x D 140mm
\$1600



8. Hic sunt dracones ark

Acrylic paint and printing ink on sea chart, in glass case
H 180mm x W 600mm x D 140mm
\$1600

Shell installation-window

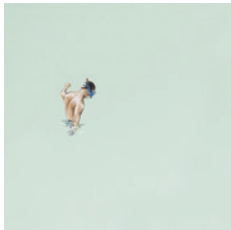
'Listen to the Sea, it has something to say to you'
H 200mm x W 230mm x D 160mm
Not For Sale



PHILIPPA BENTLEY

ULTRAMARINE

14th- 28th FEBRUARY



9. Connect 3
Acrylic on canvas
H 300mm x W 300mm
\$800



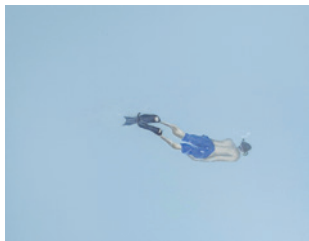
10. Connect 2
Acrylic on canvas
H 300mm x W 300mm
\$800



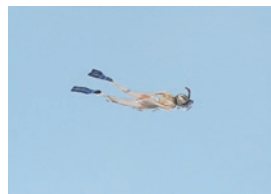
11. Connect 7
Acrylic on canvas
H 300mm x W 400mm
With AR app
\$800



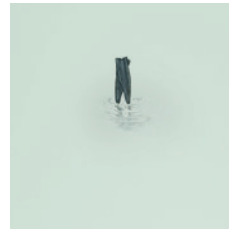
12. Connect 4
Acrylic on canvas
H 400mm x W 500mm
With AR app
\$800



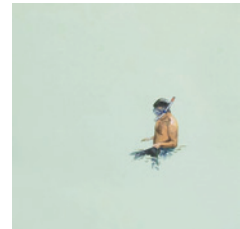
13. Connect 9
Acrylic on canvas
H 350mm x W 450mm
\$800



14. Connect 6
Acrylic on canvas
H 250mm x W 350mm
\$800



15. Connect 5
Acrylic on canvas
H 300mm x W 300mm
\$750



16. Connect 8
Acrylic on canvas
H 300mm x W 300mm
With AR app
\$800



17. Connect 1
Acrylic on canvas
H 300mm x W 400mm
With AR app
\$800



18. Still Life II
Acrylic paint, Indian ink and printing ink
on sea chart H 71mm x W 1040mm 1/1
\$ 1750

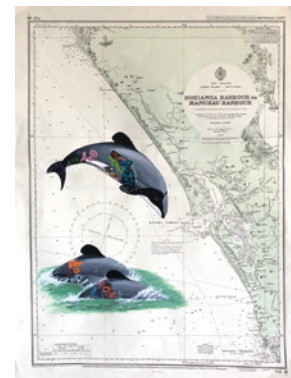
Paper Seas - unframed works on sea charts



19. Hic sunt dracones Nautilus
Printing ink, watercolour paint on sea chart H 710mm x W 520mm 1/1
\$ 950



20. Hic sunt dracones Shimmer
Printing ink, watercolour paint on sea chart H 710mm x W 520mm 1/1
\$ 1,100



21. NZ43 Maui Dolphins
Acrylic paint on sea chart
H 720mm x W 550
\$ 1825