


7^{MAY}
-22

Lush

**ANNIE
SMITS
SANDANO**



**TURUA
GALLERY**

10a Turua Street, St. Heliers  @turuagallery www.turuagallery.co.nz

ANNIE SMITS SANDANO

This May we are thrilled to bring you LUSH an exhibition showcasing selected original canvas paintings, ceramic vessels, hoop wall installations and original prints by Auckland artist Annie Smits Sandano.

The gallery will be transformed with a bright and delightful installation of works by Annie. The show will feature special preview of Annie's latest original paintings on canvas, bold new hoop wall installations and a sumptuous collection of her clay works.

This exhibition will showcase the artist's trademark and distinctive aesthetic which over the years has resulted in a strong following, consolidating her reputation as an established practicing artist. A selection of works from the artist's coveted limited edition hand printed wood block prints will be exhibited in tandem.

With an emphasis on colour and materiality, these alluring works demonstrate the artist's range and demonstrate her commitment and passion for pushing her practice and at times blurring the lines between painting and sculpture – a unique approach which has seen her works become highly collectable.

Now with 12 solo exhibitions to her name and countless group shows, Sandano has steadily honed her body of work for the past 15 years since graduating with Honours from Elam School of Fine Arts. Recent awards include being a finalist at the Portage Ceramics Awards in 2019 and being a finalist at the Waikeke Small Sculpture Awards 2020, and works featured in The Wallace Arts Trust, the private collection of the Duke and Duchess of Cambridge, Auckland City Hospital and Deloitte.

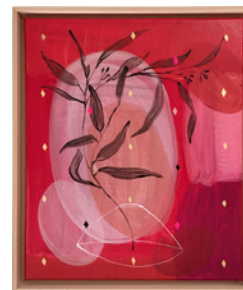
Paintings



Pink Champagne
Acrylic, silver leaf & mixed
media on canvas
framed 550mm x 650mm
\$900



Reflecting Light
Acrylic, silver leaf & mixed
media on canvas
framed 550mm x 650mm
\$900



Solitary Ceremonies
Acrylic, silver leaf & mixed
media on canvas
framed 550mm x 650mm
\$900



To the Stars
Acrylic, silver leaf & mixed
media on canvas
framed 550mm x 650mm
\$900



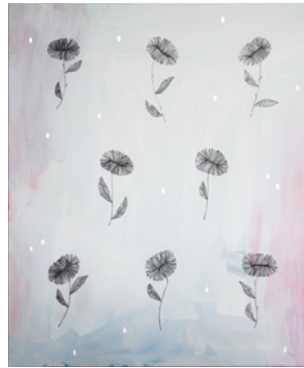
The Divine Chord
Acrylic, gold leaf &
mixed media on canvas
framed 550mm x 650mm
\$900



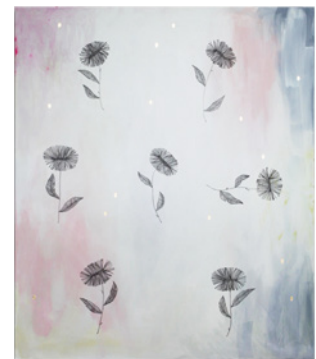
Gold Skies
Acrylic, gold leaf &
mixed media on canvas
framed 550mm x 650mm
\$900



Crescent Moon
Acrylic, gold leaf &
mixed media on canvas
framed 550mm x 650mm
\$900



Under the Stars
Acrylic & silver leaf
on canvas
1000mm x1200mm
\$2665



Love Struck
Acrylic & gold leaf
on canvas
1000mm x1200mm
\$2665

Prints



Kikorangi Fantails
Silk Screen print
Limited Edition 18/30
framed 460mm x 620mm
\$845



Star
Silk Screen print
Limited Edition 23/150
framed 460mm x 620mm
\$845



Mt Cook Daisies
Silk Screen print
Limited Edition 2/30
framed 460mm x 620mm
\$845



**New Zealand
Crayfish**
Silk Screen print
Limited Edition 14/30
framed 460mm x 620mm
\$845

Ceramics

Annie developed and formally presented her first collection of ceramics in London and Copenhagen in the summer of 2019. A cohesive collection of ceramic works was the resulting effort of consolidated hand building, firing and glazing skills during this period.

The development of this work led to having an installation piece, "Banquet", selected as one of the finalists for the 2019 Portage Ceramic Awards - New Zealand's most important ceramics award. This piece was shown at Te Uru Waitakere Contemporary Gallery in Auckland and Australian ceramicist Merran Esson was guest judge. "Banquet" was also the Portage Ceramic Award catalogue cover that year.

Simplicity, texture, contrast and block-like features characterise each work. Annie's intention was to also have a strong focus on physicality via surface while pulling on aesthetic referencing the Brutalist architecture seen around London. Silhouette and mass remaining key to the aesthetic of each piece. Glazed entirely in a simple gloss white - in keeping with some of the aesthetic rules of Brutalism, the bare building materials are exposed and you can see the colour of the original clay each piece is constructed from along the base of each piece.

Breaking the ceramic work down to its smallest particle form - clay dust - and mixing this into coloured mixed media detail brings to the fore notions of deconstruction / repurposing in function of re-building / re-inventing. These concepts are core to the development of this body of ceramic works, paralleling fundamental brutalist principles - in particular those evident in the Barbican Centre in London - which was a site used as a case-study for her research in developing this work.

Their functionality remains key so each performs the role of vessel also - sealed inside and out through the vitrification of the glaze, they hold water and are impervious.

Commissions welcome



Spearmint

Handmade ceramic vessel with white gloss glaze and mixed media

120 x 120 x 80mm

\$285



Grapes

Handmade ceramic vessel with white gloss glaze and mixed media

120 x 120 x 80mm

\$285



Skittles

Handmade ceramic vessel with white gloss glaze and mixed media

120 x 120 x 120mm

\$295



Splatter Vessel 3

Slip cast vessel with mixed media, ornamental, non functional

170 x 170 x 230mm

\$375



Splatter Vessel 4

Slip cast vessel with mixed media, ornamental, non functional

170 x 170 x 230mm

\$375



Confetti 4

Handmade ceramic with white gloss glaze & varied colour mixed media. Fully functional

130 x 130 x 190mm

\$370



Confetti 6

Handmade ceramic with white gloss glaze & varied colour mixed media. Fully functional

120 x 120 x 80mm

\$200



Confetti 14

Handmade ceramic with white gloss glaze & varied colour mixed media. Fully functional

180 x 180 x 110mm

\$335



Confetti 16
Handmade ceramic with white gloss glaze & varied colour mixed media. Fully functional
150 x 150 x 160mm
\$370



Confetti 28
Handmade ceramic with white gloss glaze & varied colour mixed media. Fully functional
120 x 240 x 90mm
\$300



Confetti 29
Handmade ceramic with white gloss glaze & varied colour mixed media. Fully functional
120 x 120 x 80mm
\$200



Confetti 30
Handmade ceramic with white gloss glaze & varied colour mixed media. Fully functional
120 x 170 x 110mm
\$320

Hoops

Pushing the edges of her painting and moving into new territories Annie decided to create works which not only sat within the plane of the canvas/board but also moved through space and included the environment. This series of hoop works began when pulling apart the base of the tondo paintings. The new hoop works feel dynamic and presented the exciting potential of remaining flexible if installed in sets of two or more - affording the person hanging them the freedom to generate their own compositions and enjoy their own personal understanding of the works within their space.

The hoops reiterate the constant of the circular forms which appear throughout Annie's printmaking and painting, and while painted in two dimensions operate as three dimensional objects as well - particularly works which have metallic leaf and generate their own light. Refracting gold or silver leaf surfaces further engage the environment via light through exposure to varying light. Installations with several hoops can be clustered together or spread apart, compositions are free to occupy a wall by contracting or expanding depending on how they were intended to sit.

From the hoop series, Annie's piece "Ocean Skinny Dip", now in a private collection, was selected as a finalist in the Waiheke Small Sculpture Prize 2020 by judge Len Bell, Associate Art History Professor at the University of Auckland.

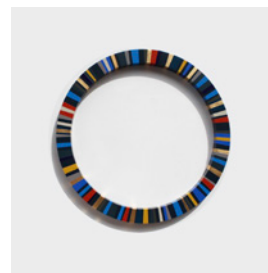
Commissions welcome



Nikau II
Acrylic & mixed media on custom hoop with gold leaf
500mm
\$915



Nikau III
Acrylic & mixed media on custom hoop with gold leaf
700mm
\$1420



Oceans II
Acrylic & mixed media on custom hoop with gold leaf
500mm
\$915



Oceans III
Acrylic & mixed media on custom hoop with gold leaf
700mm
\$1420



Orange Roughy
Acrylic & mixed media on custom hoop with gold leaf
700mm
\$1420



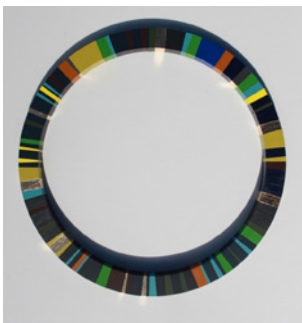
Ocean Skinny Dip
Acrylic & mixed media on custom hoop with gold leaf
700mm
\$1420



Twilight
Acrylic & mixed media on custom hoop with gold leaf
700mm
\$1420



Magnolia
Acrylic & mixed media on custom hoop with silver leaf
700mm
\$1420



Paua II
Acrylic & mixed media on custom hoop with gold leaf
500mm
\$915



Pink Clouds
Acrylic & mixed media on custom hoop with gold leaf
300mm
\$500



Pohutukawa II
Acrylic & mixed media on custom hoop with gold leaf
500mm
\$915



Espresso Martini
Acrylic & mixed media on custom hoop with gold leaf
500mm
\$915



Golden Wave
Acrylic & mixed media on custom hoop with gold leaf
2100mm x 1100mm
\$4670



Southern Constellation
Acrylic & mixed media on custom hoop with gold leaf
1x 700mm, 2x 500mm, 2x 300mm
\$4000