

S/S19

Ourania: Sicily – Corfu

Mid-day in Sicily, young Ourania sits in the garden of her grandmother's listening to Drake-like music. Her "amore" sends her a text. He found low cost plane tickets to Corfu. She hastily packs her things and "borrows" her grandmother's jewelry, to look beautiful.

Photo: Kostas Avgoulis

Short necklaces made of vintage charms and chains, gold plated pins and various ornaments and coral, malachite or blue agate beads.

SSN1901



SSN1902



SSN1903



Long necklaces consisting of vintage chains, semiprecious stones, gold plated bronze elements, acrylic and trade beads, carved corals, various old and new charms.

SSN1904



SSN1905



SSN1906



Dangle earrings made of various charms, acrylic hoops, carved resin and beads. Gold plated bronze stud earring in the shape of a heart.

SSE1901



SSE1902



SSE1903



Vintage bronze clip stud earring adorned with a Sicilian ceramic ornament, vintage yellow ornaments, white coral paste beads.

Vintage chain bracelet adorned with ceramic bead, agate drop, semiprecious stones, modern and vintage metal charms, shell.

SSE1904



SSB1901



SSE1905



Vintage bronze clip stud earring adorned with a Sicilian ceramic ornament, vintage and modern metal ornaments, beads, semiprecious stones.

Vintage chain bracelet adorned with ceramic bead, agate drop, semiprecious stones, modern and vintage metal charms, shell.

SSE1906



SSB1902



SSE1907



Vintage chain bracelet adorned with acrylic vintage beads and coral paste beads. Gold plated 925 sterling silver lobster fastening.

SSB1903



SSB1904



Gold plated faceted chain adorned with various charms, ceramic beads from Sicily, semiprecious stones and vintage finds.

(detail)

SSN1907

SSN1908

(detail)



Gold plated faceted chain adorned with various charms, ceramic beads from Sicily, semiprecious stones and vintage finds.

(detail)

SSN1909

SSN1910

(detail)



Gold plated faceted chain adorned with various charms, ceramic beads from Sicily, semiprecious stones and vintage finds.

SSN1911

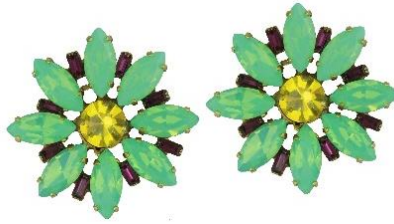


Clip earrings made of bronze and vintage crystals

SSE1908



SSE1909



SSE1910



Clip earrings made of bronze, vintage crystals, cat's eye slabs.

SSE1911



SSE1912



SSE1913



Short necklaces made of coral and turquoise paste beads, cat's eye drops, acrylic beads, gold plated 925 silver closure.

SSN1912



SSN1913



Dangle earrings made of gold plated 925 sterling silver hooks with crystals and faceted synthetic cat's eye slabs.

SSE1914



SSE1915



SSE1916



Long necklaces consisting of handmade Murano bead from Venice, fabric tassel, beaded chain and a charm.

SSN1914



SSN1915



SSN1916



Dangle earrings made of 925 sterling silver adorned with faceted crystals and synthetic cat's eye faceted slabs.

SSE1917



SSE1918



SSE1919



Long charm necklaces with semiprecious stones, such as coral, violet agate, howlite, old and new charms and gold plated 925 silver bronze chain, Murano coral and fine gold plated 925 chain made of amethyst, chrysoprase, zirconia.

SSN1917



SSN1918



SSN1920



925 sterling silver earrings adorned with crystals, agate drops. Wholesale: Sugg. Retail:925 sterling silver earrings adorned with crystals, agate drops.

SSE1920



SSE1921



Faceted chain necklaces consisting of Murano glass in the shape of a coral and a heart charm.

SSN1921



SSN1922



SSN1923



925 sterling silver earrings adorned with crystals, agate drops.

SSE1922



Long gold plated 925 silver chain necklaces with semiprecious stones, such as amethyst, turquoise, jade.

SSN1924



SSN1925



SSN1926



Gold plated crystal earrings with cat's eye drops.

SSE1923



SSE1924



Left: Long necklace made of howlite and pyrite gold plated 925 silver chain, with gold plated bronze charms and faceted tiger's eye bead. Right: chrysoprase and pyrite.

SSN1927



SSN1928



Gold plated 925 silver hoops adorned with gold plated bronze charms and howlite. Gold plated 925 silver hoops adorned with gold plated bronze charms, pink coral and faceted chrysoprase. **Middle:** Gold plated 925 sterling silver chain dangle earrings with howlite and blue agate faceted drops.

SSE1925



SSE1926



SSE1927



Gold plated 925 sterling silver hoops adorned with resin corals and gold plated marine ornaments.

SSE1811



SSE1812



Medium height gold plated 925 silver chain necklaces with chrysoprase and pink coral paste beads and gold plated shell and stone.

SSN1929

SSN1930



Short necklace consisting of a vintage elephant, resin drop and semiprecious beads (left: pink coral paste beads and chrysoprase, right: howlite and amethyst).

SSN1931



SSN1932



Gold plated metal loops adorned by rosettes decorated with crystals, gold plated 925 silver studs.

SSE1928



SSE1929



Carved resin hoops with a bronze rosette adorned with crystals. Gold plated 925 sterling silver stud and butterfly fastener.

SSE1930



SSE1931



SSE1932



Statement short necklace made of semiprecious stones, such as turquoise and acrylic elements. Gold plated 925 silver closure.

SSN1933



SSN1934



Dangle earrings made of gold plated bronze leaf, resin flower and synthetic faceted cat's eye slab. Gold plated 925 sterling silver stud and butterfly fastener.

Vintage bracelet adorned with a metal bird, beads and a vintage purple leaf.

SSE1933



SSB1905



SSE1934



SSE1935



SSE1936



Gold plated bronze earrings adorned with various faceted crystals and zirconia, turquoise, lapis lazuli and coral drops. Studs are gold plated 925 sterling silver with butterfly fastenings.

SSE1937



SSE1938



SSE1939



Rosaries made of gold plated 925 silver chain with semiprecious stones such as pink and white quartz, lapis lazuli and pyrite, jade and orange zirconia, gold plated bronze snake and bird motif, semiprecious drops such as green agate, lapis lazuli and coral paste.

SSN1935



SSN1936



SSN1937



Gold plated 925 sterling silver studs in the shape of stars adorned with crystals. Seed beads coated in turquoise, chrysoprase and coral.

SSE1940



SSE1941



SSE1942



Earrings made of vintage and new charms, semiprecious stones. All clips/hooks are gold plated 925 silver.

SSE1943



SSE1944



SSE1945



Charm necklaces made of metal chain, various vintage and new charms, scarab and evil eyes.

(detail)



SSN1938



SSN1939



(detail)



Short charm necklaces with semiprecious stones, such as orange zirconia, chrysoprase, turquoise, old and new charms and gold plated 925 silver adornments with crystals.

SSN1940



SSN1941



SSN1942



Vintage bracelets adorned with various old and new charms, mother of pearl and colored shells.

SSB1906



SSB1907



Vintage bracelets adorned with various old and new charms, mother of pearl and semiprecious stones.

SSB1908



SSB1909



Big: gold plated silver loops set on gold plated 925 silver amulets with zirconia.

Small: gold plated 925 silver loops adorned with gold plated 925 silver amulets with colored zirconia.

SSE1946



SSE1947



SSE1948



SSE1949



Necklaces made of a gold plated brass snake adorned with tiny paste beads, turquoise or coral paste beads. Gold plated 925 silver closure.

Necklace with bronze vintage metal frogs, resin, vintage chains.

SSN1943



SSN1944



SSN1945



Resin snake earrings with a malachite or white coral resin drop and gold plated 925 silver hooks.

SSE1950



SSE1951



SSE1952



Gold plated shell earrings with drops and 925 silver hooks.

SSE1953



SSE1954



SSE1955



Short necklace made of acrylic chain, resin with bone, an acrylic flower and Murano glass. Gold plated 925 silver closure.

SSN1946



SSN1947



SSN1948



Gold plated 925 silver short necklace with three charms.

Gold plated 925 silver short necklace with two charms.

HFN1901

HFN1902

(detail)

HFN1903



Gold plated 925 silver earring with three charms.

Gold plated 925 silver earring/ with two charms.

Gold plated 925 silver earring with one charms.

HFE1901

HFE1902

HFE1903



Gold plated 925 silver hoop earring short necklace with one charm.

HFE1904

HFE1905



Necklaces made of gold plated 925 silver and colored zirconia.



HFN1701R

HFN1702R

HFN1703R

HFN1704

HFN1703G

Bracelets made of gold plated 925 silver and colored zirconia.



HFB1701R

HFB1701G

HFB1702B

HFB1703G

Gold plated 925 silver bracelets with charms and zirconia.



HFB1901

HFB1902

HFB1903

Earrings made of gold plated 925 silver and colored zirconia.

HFE1701G



HFE1701R



HFE1702B



HFE1702R



HFE1703G



HFE1703R



Gold plated 925 sterling silver chain short necklaces with a semiprecious drop. (howlite, lapis lazuli and chrysoprase).

SSN1949



SSN1950



SSN1951



Gold plated 925 sterling silver chain short necklaces with double drops of howlite and lapis lazuli / chrysoprase and blue agate.

SSN1952



SSN1953



Gold plated 925 sterling silver chain dangle earrings with howlite and blue agate faceted drops.

SSE1956



SSE1957



SSE1958



TYCHEN01 LONG

Gold plated 925 sterling silver evil eyes charm necklace with 80 cm chain and closure, adorned with coloured enamel, hand painted glass eye.

TYCHEN01WH

TYCHEN01TQ

TYCHEN01BL



TYCHEN02 SHORT

Gold plated 925 sterling silver evil eyes charm necklace with 55 cm chain and closure, adorned with coloured enamel, hand painted glass eye.

TYCHEN02WH

TYCHEN02TQ

TYCHEN02BL



TYCHEE01

Single hoop single gold plated earring with enamel and glass eye.

TYCHEE01WH

TYCHEE01TQ

TYCHEE01BL



EVN1801

Gold plated 925 sterling silver evil eyes charms with 40 cm chain, closure and extension (5cm), adorned with coloured enamel, hand painted glass eye and paste beads.

EVN1801TQ EVN1801WHB EVN180BL EVN1801WHP EVN1801GR



EVE1801

Gold plated 925 sterling silver evil eyes earrings with hooks, coloured enamel, hand painted glass eye and paste beads.

EVE1801TQ EVE1801BL EVE1801WHP EVE1801GR



Gold plated 925 sterling silver evil eye earrings with hooks adorned with coloured enamel, hand painted glass eye and semiprecious drops.

EVE1801TQ EVE1801GR



EVN1802

Gold plated 925 sterling silver evil eye rosary adorned with coloured enamel, hand painted glass eye and semiprecious stones.

EVN1802TQ



EVN1802WH



EVN1802GR



EVN1802BL



EVB1801

Gold plated 925 silver evil eyes charm bracelets with coloured enamel, hand painted glass eye and paste beads.

EVB1801BL



EVB1801TQ



EVB1801GR



EVB1801WH



ARTEMIS COLLECTION

Necklaces and earrings made of metal collars, vintage metals and feathers.
Available in fuschia, light green, black

ACN1901FLD



ACN1902GRLD



ACE1901GRLD



ACE1901SMLD



ACE1901BKLD



ACE1901FSLD



ACN1701RPO



ACN1701BMS



ACN1701BL



ACN1701BLK



ACN1701GR



ACN1701YLW



ACN1701WH



ACN1701RD



ACE1701BL



ACE1701YLL



ACE1701TU



ACE1701SM



ACE1701GRN



ACE1701WH



ACE1701PT



ACE1701PNK



ACE1701GR



ACE1701RD



ACE1701BLK



Earrings and necklaces made from ostrich feathers. Brass metal and gold plated 925 sterling silver with zirconia.

ACE1701OFAV



ACE1701OFPP



ACE1701FGR



ACE1701FBLU



ACE1701FBL



ACON1901BL



ACON1901GR



ACON1901PP



Cyclos collection consists of timeless gold plated bracelets and earrings echoing a Doric aesthetic. Vintage brass motifs are transformed into earrings and bracelets. They become the classic key pieces to your jewelry box, classic must haves for a daily chic look.

SMALL

Gold plated brass hoops with gold plated 925 sterling silver studs and butterfly fastenings. The middle one has clips instead.

CCE1901



CCE1902



CCE1903



MEDIUM

CCE1905 Gold plated double hoops with 925 studs made of vintage brass materials. / **CCE1910**
 Medium size gold plated hoops made of vintage brass and brass studs.
 Medium size gold plated hoops made of vintage brass and brass studs.

CCE1908



CCE1905



CCE1910



Gold plated brass bangles with cabochons or coloured enamel.

CCB1908



CCB1909



CCB1910



Gold plated brass bangles with cabochons or coloured enamel.

CCB1911



CCB1912



CCB1913



CCB1914



Gold plated brass hoops with clips and enamel.

CCE1911GR



CCE1911PT



CCE1911PRL



CCE1911RD

