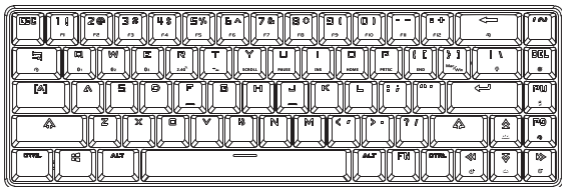




GG68B

TRIPLE MODE HOTSWAPPABLE RGB
MECHANICAL KEYBOARD



INSTRUCTION MANUAL

BASIC PARAMETERS

Interface Mode: Bluetooth/2.4GHz Wireless/USB Wired

Lighting Mode: Full RGB Color, Multimode

Keyboard Size: 68 Keys (65%)

PCB: 5-Pin Hot Swappable

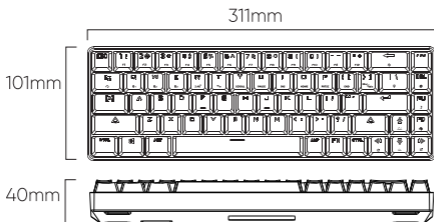
Product Size: 311x101x40mm ± 10mm

Estimated Weight (Full Board): 510g ± 10g

Included Cable Length: 1.5 Meters

Compatible OS: Windows/Mac/Linux/Android/iOS

PRODUCT SPECIFICATIONS



Package Contents:

1 x GG68B

1 x Instruction Manual

1 x 2.4GHz Wireless Receiver

1 x USB C Cable

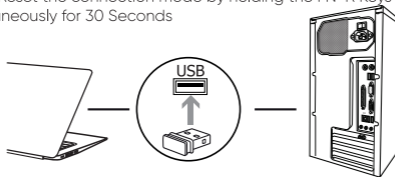
HOW TO PAIR

How to Pair - 2.4GHz Wireless Mode




1. Make sure the keyboard is TURNED ON. As seen here:
2. Prepare the 2.4GHz Wireless Receiver included in the box
3. Initiate the 2.4GHz Pairing mode by pressing and holding the FN+R Keys simultaneously until the R Key light starts blinking.
4. Plug in the 2.4GHz wireless receiver as indicated in the picture below.
5. Once the connection is successful, R Key backlight should go back to the previous lighting mode.

NOTE: Reset the connection mode by holding the FN+R Keys simultaneously for 30 Seconds



HOW TO PAIR - BLUETOOTH 3.0/5.0

1. Ensure that the Keyboard is **TURNED ON**. 
2. Enable Bluetooth Pairing Mode by pressing and holding FN+Q/W/E until the light of the corresponding key starts blinking.
3. Go to your bluetooth device settings and connect to either GG68B 3.0 (for Bluetooth 3.0 Devices) or GG68B 5.0 (for Bluetooth 5.0 Devices)
4. Once the light of the Q/W/E key turns back to the previous lighting mode, connection is successful.


Important Note:

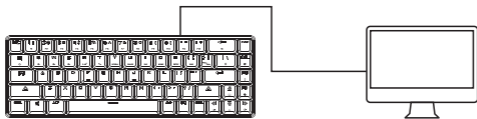


The GG68B features bluetooth memory pairing, meaning you can enlist up to 3 bluetooth devices that the keyboard can auto connect to by pairing with FN+Q (Device 1), FN+W (Device 2), FN+E (Device 3). Quickly Swap between already paired devices by quick pressing FN+Q/W/E. Choose the position you want the device to be saved at by holding the corresponding key. **DO NOT HOLD FN+Q+W+E AT THE SAME TIME TO PAIR, THIS DOES NOTHING; CHOOSE ONE KEY TO HOLD WITH FN.**



How to Pair - WIRED MODE

1. To connect via cable, make sure the keyboard is **TURNED OFF**.
2. Connect the keyboard to your computer via the provided USB-C cable. 



TIPS AND TRICKS

To get the best latency, we advise using the keyboard at wired mode. For people who want to be cable-free but reduce the amount of latency, 2.4GHz is faster than bluetooth.

The GG68B works with both iPad OS and iOS Devices. Pair the GG68B with our wireless mice to get the complete iOS productivity setup.

FN KEY FUNCTIONS AND ADDITIONAL FEATURES

FACTORY REST: Long Press FN+BACKSPACE for 5 Seconds

Wireless Function Keys:

FN+Q: Bluetooth Device 1
FN+W: Bluetooth Device 2
FN+E: Bluetooth Device 3

FN+R: 2.4GHz Mode
FN+T: Status Indicator

Lock and Shortcut Functions:

FN+Y: Scroll Lock
FN+I: Insert
FN+P: Print Screen

FN+U: Pause Break
FN+O: Home
FN+[{}: End

Media Functions and F-Row keys

Note: Change the nature of the secondary function of the top row keys using FN+]}.

FN+]}: Toggle Primary/Secondary Function of top row

	Primary Function	Secondary Function
FN+1:	F1	Open File Explorer
FN+2:	F2	Opens Default Browser
FN+3:	F3	Opens Email App
FN+4:	F4	Opens Calculator
FN+5:	F5	Opens Media Player
FN+6:	F6	Stop Playing Media
FN+7:	F7	Previous Track
FN+8:	F8	Pause/Play
FN+9:	F9	Next Track
FN+0:	F10	Mute
FN+ -_ :	F11	Volume Down
FN+ =+ :	F12	Volume Up

Note: All Secondary functions work with windows. For macOS users, secondary functions from FN+7 to += work. FN+1-6 can be customized in MacOS system preferences under accessibility.

FN KEY FUNCTIONS AND ADDITIONAL FEATURES

System Functions:

FN+A or S swaps the functions of the Win Key and the Alt Key

FN+A: Windows Mode. This makes the "Win" key the Command key in MacOS and the "Alt" Key becomes the "Option" key in MacOS.

FN+S: Mac Mode. Makes the "Win" Key the "Option" Key in MacOS. Makes the "Alt" Key the Command key in MacOS.

Lighting Functions

FN+Tab: Switches between saved lighting modes

FN+\\| : Turns RGB on or off

FN+UP Arrow: RGB Brightness Increases

FN+DOWN Arrow: RGB Brightness Decreases

FN+LEFT Arrow: Slows down RGB Effect

FN+ RIGHT Arrow: Speeds up RGB Effect

FN+PgUp: Change the RGB Effect Direction

FN+PgDn: Change Color of the Current RGB Effect

FN+Del: Custom User Lighting Mode

Important Notes:

There are 21 Default lighting modes + the custom user lighting effect.

Whenever the max/min brightness or speed of the current RGB Effect is reached, the Win Key will flash.

CUSTOM LIGHTING MODE (FN+Del)

1. Hit FN+Del to enter custom user RGB effect.
2. To program this mode hold FN+Del untl the WIN KEY is flashing.
3. Select which keys light up by pressing the desired key on the keyboard.
4. Change the key light color by double tapping the key until it reaches the desired color.
5. Press FN+Del to record yourcustom lighting effect. The Windows key will stop flashing once saving is successful.



WELCOME TO THE TEAM.

Follow us at our official website (**garudagear.com**) and our social media pages for updates on upcoming products, events, and more.

In the meantime, check out our other products:



OSPREY 1

WIRELESS RGB GAMING MOUSE



FALCON 1

RGB PROGRAMMABLE GAMING MOUSE