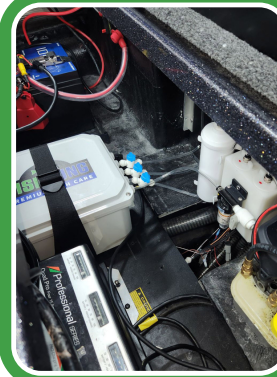


1 COMPONENT CHECK

Unpack box and ensure you have all the essentials as noted on the System Components list on the following page. Familiarize yourself with the components and system layout.

Note: Remove tape from both filter cartridges before installing to allow air flow.



5 ARRANGE / INSTALL TUBING TO COMPONENTS

Follow the tubing diagram to connect tubing, line-T, regulator check valve (directional) and in-line valves. Position the shut-off valves for easy access.

Note: Drill 1/4" hole above water line to install tubing to livewell. Seal hole with marine grade silicone. Tubing must be cut straight to avoid leakage.



2 IDENTIFY LOCATION AND MOUNT CONTROL BOX

Identify a flat, secure surface for Control Box and mount using the provided strap system. Approximate dimensions: 13" (W) x 10" (H) x 7" (D). Leave room for hoses.

Note: Steps 2 and 3 can be swapped if needed. Every boat is different.



6 CONSOLE SWITCH CONNECTION

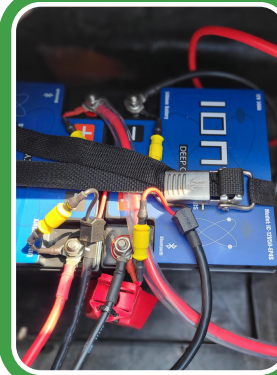
Locate an available fused switch on your boat's console for the FishLung unit. Add a switch if needed.



3 IDENTIFY LOCATION AND MOUNT UNIBODY ASSY.

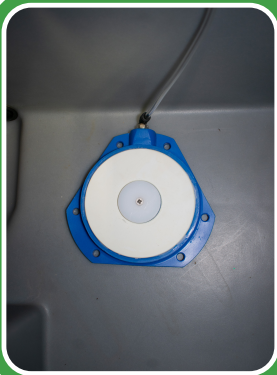
Identify a flat, secure surface for Unibody Assembly and mount using the provided screws and washers. Must be installed upright. Approx. dimensions: 11" (W) x 9.5" (H) x 6" (D).

Note: Allow space to be able to remove filter cartridges from unibody assembly.



7 PROVIDE POWER TO FISHLUNG CONTROL BOX

Connect the Control Box power cord to the selected console switch, utilizing the provided 10 amp fuse / holder and a reliable negative wire to the battery.



4 INSTALL AND MOUNT O2 NANO BUBBLE DIFFUSER

Clean bottom of livewell. Attach Diffuser base to bottom of livewell with supplied water-proof adhesive. Allow 8-hours to cure. Once cured, attach stone and mounting post top using screw.

Note: Add small weight to base during curing period. Avoid power tools installing screw to avoid stripping.



8 SYSTEM ACTIVATION AND TESTING

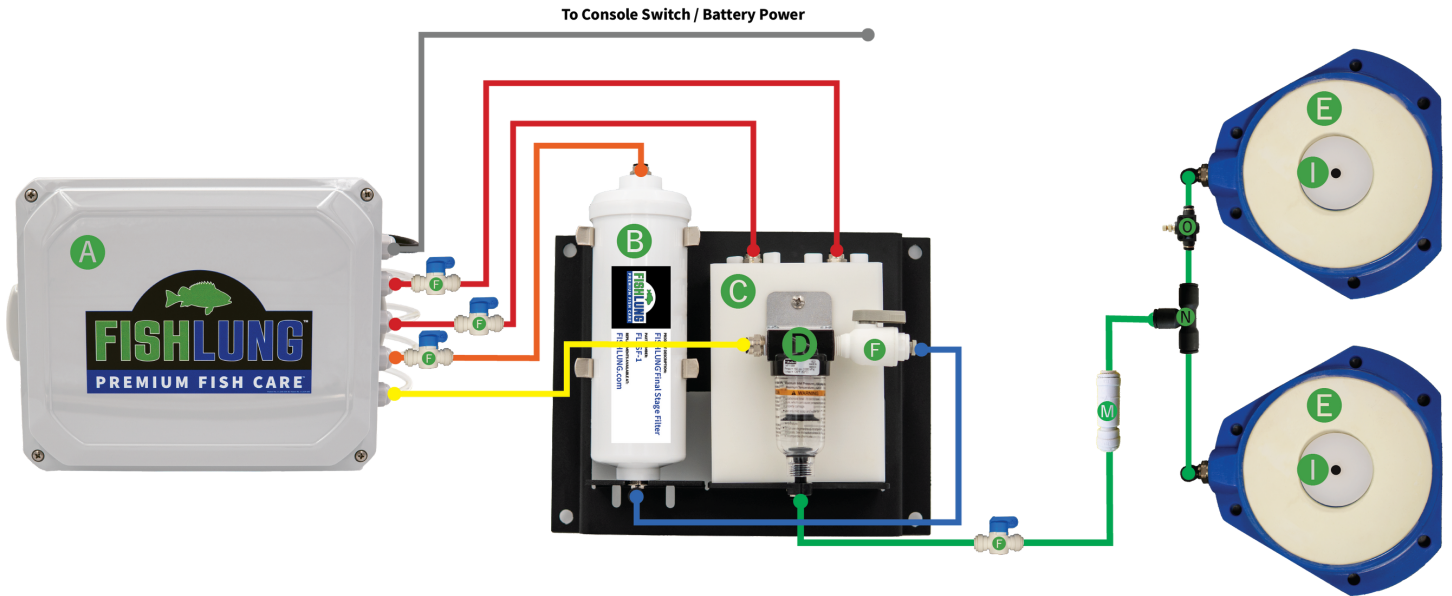
- Open all five in-line valves.
- Turn on FishLung® console switch.
- Listen for 8-second cycle periods.
- If water is in the livewell, observe the system running on/off in 4 min. cycles.
- Close valves when finished using.

Congratulations! Your FishLung® system is successfully installed.

Remember to turn off the system and close the in-line shut-off valves when not in use to preserve the canisters and final filter.

To watch our step by step installation video, visit our installation page at www.fishlung.com.

For any other queries or assistance, contact our support team at 888-742-3250 or support@fishlung.com.



SYSTEM COMPONENTS

- A)** FishLung® Control Box
- B)** Final Stage Filter
- C)** Unibody Assembly
- D)** Moisture Separator Filter
- E)** O2 Nano Bubble Diffuser
- F)** (5) Isolation Valves
- G)** Control Box Mounting System
- H)** Unibody Bracket Screws
- I)** Diffuser Mounting System
- J)** Water-Proof Adhesive
- K)** 15' 1/4" Tubing
- L)** 10 Amp Fuse and Holder
- M)** Inline Check Valve
- N)** Line T
- O)** Regulator *(Note: Add to stone with higher flow)*
- P)** Livewell Line Clips



To watch our step by step installation video, visit our installation page at www.fishlung.com.

For any other queries or assistance, contact our support team at 888-742-3250 or support@fishlung.com.