



# HAMMER SMITH

PRODUCT CATALOGUE 2021-2023

# Contents

## TIMBER HANDRAILS & FITTINGS 5-17

EZIRAIL 50Ø	5
EZIRAIL 50Ø WITH FLAT BASE	6-7
DESIGNER RAIL 43Ø	8-10
HERITAGE HANDRAIL	11-13
MONO HANDRAIL	13
PRESTIGE HANDRAIL	13
VICTORIAN HANDRAIL	14
CALIFORNIA HANDRAIL	14
SIGNATURE HANDRAIL	15
VANCOUVER HANDRAIL	15
PIGS EAR HANDRAIL	15
BASE RAIL AND INFILL	15-16
ZIPBOLT	16-17

## HANDRAIL BRACKETS 18-22

WALL MOUNTED	18-21
TOP MOUNTED	21
GLASS MOUNTED	22

## STAIR POSTS, CAPS & BALUSTERS 23-30

TIMBER BALUSTERS	23
METAL BALUSTERS	24
TASMAN TURNED STAIR POSTS	25
3 RINGS 2 FLUTES STAIR POSTS	26
STAIR POST EXTENSIONS	27
PLAIN STAIR POSTS	27
PRESTIGE STAIR POSTS	28
POST MOULD	29
POST CAPS (SCALLOPED, PYRAMID, BUDGET, BALL)	29-30

## STAIR TREADS & RISERS 31

## TIMBER DOWELS 32-33

### Front Cover

The person on the cover is operating a Mattison rotary knife wood lathe that is turning the Tasman Standard Post (JN002), which can be found on page 25 of this catalogue. What is most interesting about this photo however, is that this person has worked at Hammersmith since May 1963; his name is Kevin Johns, and he is a living legend. He was employed by Ted Groth (the founder of the business) and has worked with 4 generations of Groth's over the last 58 years. Eventually he will retire, and when he does, he will be irreplaceable. Thankyou Kevin.

### Website

This 2021-2023 Product Catalogue is only representative of its print date. The best way to keep up-to-date with new product releases and other updates is to use our website: [hammersmith.com.au](http://hammersmith.com.au) In addition to having the most up-to-date stock lists, the website also has more detailed product descriptions, photos, and dimensioned drawings. Another great feature of the website is the Blog. These blogs detail info on new and current stocked products, as well as custom jobs we have produced.

### Product Specifications

All measurements shown in this catalogue are in millimetres (unless stated otherwise) and should be used as a guide only. Slight variations may occur.

# Contents

## Custom Manufacturing

We do have the facilities to manufacture custom products.

We encourage you to speak to us if you have an idea for a product that we do not show in the catalogue.

## Product Uses

Many of our products have multiple uses. Therefore, the suggestions that we make should be seen as a guide only, and we offer no guarantee regarding the suitability of any particular product for any specific use.

## Pricing

This product catalogue does not contain any prices. To obtain prices, please contact us for a PDF copy of our most recent price list, or use our online store. Account customers who have registered for a web account will be able to access their trade pricing online. If you don't have login details, please contact us so that we can assist you in setting up your account.

## How Do I Place An Order?

Orders can either be placed directly through our website [hammersmith.com.au](http://hammersmith.com.au) or via email

[info@hammersmith.com.au](mailto:info@hammersmith.com.au)

If neither of these methods suit, we can take an order over the phone on 08 8346 8211.

<b>STAINLESS STEEL BALUSTRADE COMPONENTS</b>	<b>34-66</b>
WIRE BALUSTRADE SYSTEMS	34-37
WIRE CABLE	38
WIRE BALUSTRADE FITTINGS	38-45
WIRE BALUSTRADE TOOLS	46-47
TUBE	48-49
ROUND TUBE FITTINGS	49-54
SQUARE TUBE FITTINGS	55-57
RECTANGLE TUBE FITTINGS	57-58
SLOTTED TUBE FITTINGS	55, 59-60
GLASS CLAMPS	60-62
STANDOFFS	62-63
READY-TO-USE POSTS	64-66

<b>GALVANISED PIPE &amp; FITTINGS</b>	<b>67-87</b>
PIPE	67
FITTINGS	67-87

<b>EXTERIOR BUILDING PRODUCTS</b>	<b>88-99</b>
VERANDAH POSTS & WALL PLATES	88-89
ROOF FINIALS	89-90
ROSETTES	90
POST MOULDS	90-91
WINDOW CANOPIES	91
HANDRAIL	91-92
STAIR TREADS	92
FRETWORK SPINDLES	92
PANELS	93
BALUSTERS	93
VERANDAH & EAVE BRACKETS	94-96
FENCE POST CAPITALS	96-98
DOWEL SCREWS & PRESERVATIVES	99

# Contents

## FURNITURE COMPONENTS 100-116

ARCHITRAVE BLOCKS	100
CORBELS & CARVINGS	100-104
COVER BUTTONS	105
SPINDLES	105-106
FINIALS	106
KNOBS	107
CHEST & LOUNGE LEGS	107-110
SQUARE-LINE LEGS	110
SLIM-LINE LEGS	111
REGULAR-LINE LEGS	111
COLUMNS	112
TABLE LEGS (TALL & SHORT)	112-114
CABRIOLE LEGS (TALL & SHORT)	113-114
FURNITURE FIXINGS & ACCESSORIES	115-116

## TITEBOND WOOD GLUES & ADHESIVES 117-118

## INDEX 118-123



Ted Groth, Geoff Groth, Wyatt Groth & Kevin Johns ..... 75 Years of Excellence in 2021

### HAMMERSMITH WOODTURNERS PTY LTD

49 HOCKING STREET BROMPTON SOUTH AUSTRALIA 5007

PHONE: 08 8346 8211 E-MAIL: [info@hammersmith.com.au](mailto:info@hammersmith.com.au)

WEBSITE: [hammersmith.com.au](http://hammersmith.com.au)

© Copyright 2021. This product catalogue is the copyright of Hammersmith Woodturners and cannot be reproduced, copied or replicated without prior written consent of Hammersmith Woodturners. Such consent applies to images as well as text.

### How Do I Pay?

If you have a 30-day account, payment for all purchases will be due by the end of the following month. For customers without a 30-day account, payment can be made via VISA, Mastercard, or bank deposit either over the phone or in person. To qualify for a 30-day account you will need to place multiple, substantial orders each month. If you think this might apply to you, feel free to contact us to discuss your options.

### Delivery

We deliver anywhere in Australia through a number of different freight companies. The cost of freight will vary depending on what is being ordered, and the delivery location. Free delivery will be automatically applied to eligible orders. For more information, please consult your price list or our website.

# GALAXY MEDIA

This product catalogue was designed by Galaxy Media who are a local small business in South Australia that specialises in freelance graphic design work and photography.

If you are impressed by their work designing this catalogue, just like we are, feel free to look them up on social media or contact them at: [jarrod@galaxymedia.net.au](mailto:jarrod@galaxymedia.net.au)



## EZIRAIL 50Ø HANDRAIL

- 50MM DIAMETER FULL ROUND

CODE	TIMBER SPECIES
JH099A	AMERICAN OAK
JH099M	MERANTI
JH099R	PINE (FINGER JOINTED)
JH099T	VICTORIAN ASH



## 90° BEND (55mm INTERNAL RADIUS)

- CONNECT TO HANDRAIL USING 16Ø JOINING DOWEL (PG 7)

CODE	TIMBER SPECIES
JH104A	AMERICAN OAK
JH104M	MERANTI
JH104R	PINE
JH104T	VICTORIAN ASH



## 90° BEND (110mm INTERNAL RADIUS)

- CONNECT TO HANDRAIL USING 16Ø JOINING DOWEL (PG 7)

CODE	TIMBER SPECIES
JH103A	AMERICAN OAK
JH103M	MERANTI
JH103R	PINE
JH103T	VICTORIAN ASH



## 37° BEND

- CONNECT TO HANDRAIL USING 16Ø JOINING DOWEL (PG 7)

CODE	TIMBER SPECIES
JH105A	AMERICAN OAK
JH105M	MERANTI
JH105R	PINE
JH105T	VICTORIAN ASH



## 50Ø DOMED END CAP

- GOES ON THE END OF THE 50Ø HANDRAIL IN BOTH THE FULL ROUND (JH099) AND WITH THE FLAT BASE (JH130)

CODE	TIMBER SPECIES
JH135A	AMERICAN OAK
JH135M	MERANTI
JH135R	PINE
JH135T	VICTORIAN ASH



# EZIRAIL 50Ø WITH FLAT BASE



## EZIRAIL 50Ø HANDRAIL WITH FLAT BASE

- 50MM DIAMETER WITH A 32MM WIDE FLAT BASE

CODE	TIMBER SPECIES
JH130R	PINE (FINGER JOINTED)
JH130T	VICTORIAN ASH



## 90° BEND (FLAT BASE)

- 55mm INTERNAL RADIUS
- CONNECT TO HANDRAIL USING 16Ø JOINING DOWEL (PG 7)

CODE	TIMBER SPECIES
JH131T	VICTORIAN ASH



## 45° BEND (FLAT BASE)

- CONNECT TO HANDRAIL USING 16Ø JOINING DOWEL (PG 7)

CODE	TIMBER SPECIES
JH132T	VICTORIAN ASH



## 37° EASE UP (FLAT BASE)

- CONNECT TO HANDRAIL USING 16Ø JOINING DOWEL (PG 7)

CODE	TIMBER SPECIES
JH133T	VICTORIAN ASH



## 37° EASE OVER (FLAT BASE)

- CONNECT TO HANDRAIL USING 16Ø JOINING DOWEL (PG 7)

CODE	TIMBER SPECIES
JH134T	VICTORIAN ASH



# EZIRAIL 50Ø WITH FLAT BASE

07

TIMBER HANDRAILS & FITTINGS



## 53° EASE UP (FLAT BASE)

- CONNECT TO HANDRAIL USING 16Ø JOINING DOWEL (PG 7)

CODE	TIMBER SPECIES
JH137T	VICTORIAN ASH



## 90° EASE OVER (FLAT BASE)

- CONNECT TO HANDRAIL USING 16Ø JOINING DOWEL (PG 7)

CODE	TIMBER SPECIES
JH138T	VICTORIAN ASH



## 180° OVER SCROLL (FLAT BASE)

- CONNECT TO HANDRAIL USING 16Ø JOINING DOWEL (PG 7)

CODE	TIMBER SPECIES
JH136T	VICTORIAN ASH



## EZIRAIL JOINING DOWEL

- 60mm PIECE OF 16Ø DOWEL USED TO JOIN EZIRAIL 50Ø (FULL ROUND AND FLAT BASE) AND DESIGNER RAIL 43Ø

CODE	TIMBER SPECIES
ID115T-S	VICTORIAN ASH



IF121X



IF147X

## DRILLING JIGS FOR TIMBER

- USED TO ACCURATELY DRILL A 16mm HOLE IN THE END OF 43Ø AND 50Ø HANDRAIL FOR THE PURPOSE OF JOINING IT TO A TIMBER BEND. A 16mm DRILL IS INCLUDED.

CODE	INTENDED USE
IF121X-43	43mm DESIGNER RAIL (COMMERCIAL USE)
IF121X-50	50mm EZIRAIL (COMMERCIAL USE)
IF147X-43	43mm DESIGNER RAIL (DOMESTIC USE)
IF147X-50	50mm EZIRAIL (DOMESTIC USE)



# DESIGNER RAIL 43Ø



## DESIGNER RAIL 43Ø

- 43MM DIAMETER FULL ROUND

CODE	TIMBER SPECIES
JH070A	AMERICAN OAK
JH070H	BLACKBUTT
JH070J	JARRAH
JH070M	MERANTI
JH070N	SPOTTED GUM
JH070Q	KWILA
JH070R	PINE (FINGER JOINTED)
JH070T	VICTORIAN ASH

## 90° BEND (60mm INTERNAL RADIUS)

- CONNECT TO HANDRAIL USING 16Ø JOINING DOWEL (PG 7)



CODE	TIMBER SPECIES
JH085A	AMERICAN OAK
JH085H	BLACKBUTT
JH085N	SPOTTED GUM
JH085T	VICTORIAN ASH

## 37° BEND

- CONNECT TO HANDRAIL USING 16Ø JOINING DOWEL (PG 7)



CODE	TIMBER SPECIES
JH084A	AMERICAN OAK
JH084H	BLACKBUTT
JH084N	SPOTTED GUM
JH084T	VICTORIAN ASH

## 43Ø DOMED END CAP

- GOES ON THE END OF THE 43Ø DESIGNER RAIL



CODE	TIMBER SPECIES
JH086A	AMERICAN OAK
JH086H	BLACKBUTT
JH086N	SPOTTED GUM
JH086T	VICTORIAN ASH







## 90° BEND

- CONNECT TO HANDRAIL USING CONNECTOR (PG 10)
- 2 CONNECTORS SUPPLIED WITH THIS FITTING

CODE	FINISH
JH075XMB	MATT BLACK 316 STAINLESS STEEL
JH075XSSS	SATIN 316 STAINLESS STEEL



## ADJUSTABLE BEND

- CONNECT TO HANDRAIL USING CONNECTOR (PG 10)
- 2 CONNECTORS SUPPLIED WITH THIS FITTING

CODE	FINISH
JH078XMB	MATT BLACK 316 STAINLESS STEEL
JH078XSSS	SATIN 316 STAINLESS STEEL



## 35° BEND

- CONNECT TO HANDRAIL USING CONNECTOR (PG 10)
- 2 CONNECTORS SUPPLIED WITH THIS FITTING

CODE	FINISH
JH080XMB	MATT BLACK 316 STAINLESS STEEL
JH080XSSS	SATIN 316 STAINLESS STEEL



## STRAIGHT JOINER

- CONNECT TO HANDRAIL USING CONNECTOR (PG 10)
- 2 CONNECTORS SUPPLIED WITH THIS FITTING

CODE	FINISH
JH077XMB	MATT BLACK 316 STAINLESS STEEL
JH077XSSS	SATIN 316 STAINLESS STEEL



## 90° TERMINATING BEND

- CONNECT TO HANDRAIL USING CONNECTOR (PG 10)
- 1 CONNECTOR SUPPLIED WITH THIS FITTING

CODE	FINISH
JH074XMB	MATT BLACK 316 STAINLESS STEEL
JH074XSSS	SATIN 316 STAINLESS STEEL



# DESIGNER RAIL 43Ø



## 43Ø FLAT END CAP

- CONNECT TO HANDRAIL USING CONNECTOR (PG 10)
- 1 CONNECTOR SUPPLIED WITH THIS FITTING

CODE	FINISH
JH072XMB	MATT BLACK 316 STAINLESS STEEL
JH072XSSS	SATIN 316 STAINLESS STEEL



## 43Ø DOMED END CAP

- CONNECT TO HANDRAIL USING CONNECTOR (PG 10)
- 1 CONNECTOR SUPPLIED WITH THIS FITTING

CODE	FINISH
JH073XMB	MATT BLACK 316 STAINLESS STEEL
JH073XSSS	SATIN 316 STAINLESS STEEL



## CONNECTOR FOR 43Ø DESIGNER RAIL

- USED TO CONNECT THE STAINLESS FITTINGS TO THE 43Ø DESIGNER RAIL.
- CONNECTORS ARE ALREADY SUPPLIED WITH THE FITTINGS, BUT CAN BE ORDERED SEPERATELY IF NEEDED.

CODE	MATERIAL
IF131XS4	304 STAINLESS



## ALIGNMENT JIG FOR 43Ø DESIGNER RAIL

- USED TO ACCURATELY ALIGN THE STAINLESS FITTINGS TO THE END OF THE HANDRAIL.

CODE	INTENDED USE
IF130X	43mm Designer Rail Stainless Fittings

All of our timber comes from sustainably managed sources.

Many of the products we sell are manufactured in multiple timbers species. Most are Australian timbers, but some are sourced overseas.

The grade (ie. quality) of timber we source is ALWAYS the highest available, but within some species, imperfections such as gum vein, knots etc. may still be present (such as Spotted Gum and Blackbutt).





## HERITAGE HANDRAIL

- 65mm WIDE x 65mm HIGH

CODE	TIMBER SPECIES
JH005A	AMERICAN OAK
JH005M	MERANTI
JH005R	PINE (FINGER JOINTED)
JH005T	VICTORIAN ASH



## 37° EASE OVER

- CONNECT TO HANDRAIL USING ZIPBOLTS (PG 16-17)

CODE	TIMBER SPECIES
JH011A	AMERICAN OAK
JH011M	MERANTI
JH011R	PINE
JH011T	VICTORIAN ASH



## 37° EASE UP

- CONNECT TO HANDRAIL USING ZIPBOLTS (PG 16-17)

CODE	TIMBER SPECIES
JH013A	AMERICAN OAK
JH013M	MERANTI
JH013R	PINE
JH013T	VICTORIAN ASH



## 53° EASE UP

- CONNECT TO HANDRAIL USING ZIPBOLTS (PG 16-17)

CODE	TIMBER SPECIES
JH014A	AMERICAN OAK
JH014M	MERANTI
JH014R	PINE
JH014T	VICTORIAN ASH



## GOOSENECK

- CONNECT TO HANDRAIL USING ZIPBOLTS (PG 16-17)

CODE	TIMBER SPECIES
JH019A	AMERICAN OAK
JH019M	MERANTI
JH019R	PINE
JH019T	VICTORIAN ASH



# HERITAGE HANDRAIL



## LEVEL 1/4 TURN

- CONNECT TO HANDRAIL USING ZIPBOLTS (PG 16-17)

CODE	TIMBER SPECIES
JH023A	AMERICAN OAK
JH023M	MERANTI
JH023R	PINE
JH023T	VICTORIAN ASH



## LEVEL 1/4 TURN WITH NEWEL POST CAP

- CONNECT TO HANDRAIL USING ZIPBOLTS (PG 16-17)

CODE	TIMBER SPECIES
JH025A	AMERICAN OAK
JH025M	MERANTI
JH025R	PINE
JH025T	VICTORIAN ASH



## MID-RAIL NEWEL POST CAP

- CONNECT TO HANDRAIL USING ZIPBOLTS (PG 16-17)

CODE	TIMBER SPECIES
JH032A	AMERICAN OAK
JH032M	MERANTI
JH032R	PINE
JH032T	VICTORIAN ASH



## END SCROLL

- CONNECT TO HANDRAIL USING ZIPBOLTS (PG 16-17)

CODE	TIMBER SPECIES
JH021A	AMERICAN OAK
JH021M	MERANTI
JH021R	PINE
JH021T	VICTORIAN ASH



## OPENING NEWEL POST CAP (SMALL)

- CONNECT TO HANDRAIL USING ZIPBOLTS (PG 16-17)

CODE	TIMBER SPECIES
JH031A	AMERICAN OAK
JH031M	MERANTI
JH031R	PINE
JH031T	VICTORIAN ASH





## OPENING NEWEL POST CAP (LARGE)

- CONNECT TO HANDRAIL USING ZIPBOLTS (PG 16-17)

CODE	TIMBER SPECIES
JH035A	AMERICAN OAK
JH035M	MERANTI
JH035R	PINE
JH035T	VICTORIAN ASH



## LEFT VOLUTE/SCROLL

- CONNECT TO HANDRAIL USING ZIPBOLTS (PG 16-17)

CODE	TIMBER SPECIES
JH033A	AMERICAN OAK
JH033M	MERANTI
JH033R	PINE
JH033T	VICTORIAN ASH



## RIGHT VOLUTE/SCROLL

- CONNECT TO HANDRAIL USING ZIPBOLTS (PG 16-17)

CODE	TIMBER SPECIES
JH034A	AMERICAN OAK
JH034M	MERANTI
JH034R	PINE
JH034T	VICTORIAN ASH



## MONO HANDRAIL

- 65mm WIDE x 45mm HIGH

CODE	TIMBER SPECIES
JH050R	PINE (FINGER JOINTED)
JH050T	VICTORIAN ASH



## PRESTIGE HANDRAIL

- 89mm WIDE x 65mm HIGH

CODE	TIMBER SPECIES
JH170R	PINE (FINGER JOINTED)
JH170T	VICTORIAN ASH



# VICTORIAN & CALIFORNIA HANDRAIL



## VICTORIAN HANDRAIL

- 70mm WIDE x 45mm HIGH

### CODE

JH235R

JH235T

### TIMBER SPECIES

PINE (FINGER JOINTED)

VICTORIAN ASH



## 53° EASE UP

- CONNECT TO HANDRAIL USING ZIPBOLTS (PG 16-17)

### CODE

JH230R

JH230T

### TIMBER SPECIES

PINE

VICTORIAN ASH



## LEFT VOLUTE/SCROLL

- CONNECT TO HANDRAIL USING ZIPBOLTS (PG 16-17)

### CODE

JH224R

JH224T

### TIMBER SPECIES

PINE

VICTORIAN ASH



## RIGHT VOLUTE/SCROLL

- CONNECT TO HANDRAIL USING ZIPBOLTS (PG 16-17)

### CODE

JH225R

JH225T

### TIMBER SPECIES

PINE

VICTORIAN ASH



## CALIFORNIA HANDRAIL

- 66mm WIDE x 60mm HIGH

### CODE

JH181R

JH181T

### TIMBER SPECIES

PINE (FINGER JOINTED)

VICTORIAN ASH





## SIGNATURE HANDRAIL

- 42mm WIDE x 32mm HIGH

CODE	TIMBER SPECIES
JH040R	PINE (FINGER JOINTED)
JH040T	VICTORIAN ASH



## VANCOUVER RAIL

- 55mm WIDE x 42mm HIGH

CODE	TIMBER SPECIES
JH044R	PINE (FINGER JOINTED)
JH044T	VICTORIAN ASH



## PIGS EAR HANDRAIL

- 63mm WIDE x 77mm HIGH

CODE	TIMBER SPECIES
JH159R	PINE (FINGER JOINTED)
JH159T	VICTORIAN ASH



## BASE RAIL WITH REBATE

- 65mm WIDE x 32mm HIGH
- ONE SIDE HAS A 42mm REBATE AND THE OTHER 16mm

CODE	TIMBER SPECIES
JH007A	AMERICAN OAK
JH007M	MERANTI
JH007R	PINE (FINGER JOINTED)
JH007T	VICTORIAN ASH



## 42mm HANDRAIL INFILL WITH REBATE

- 42mm WIDE x 12mm HIGH
- USE AS AN INFILL PIECE BETWEEN 42mm BALUSTERS

CODE	TIMBER SPECIES
JH008A	AMERICAN OAK
JH008M	MERANTI
JH008R	PINE (FINGER JOINTED)
JH008T	VICTORIAN ASH



# HANDRAIL INFILL & ZIPBOLT



## 16mm HANDRAIL INFILL

- 16mm WIDE x 10mm HIGH
- USE AS AN INFILL PIECE BETWEEN 16mm BALUSTERS

CODE	TIMBER SPECIES
JH009A	AMERICAN OAK
JH009M	MERANTI
JH009R	PINE
JH009T	VICTORIAN ASH



## ZIPBOLT UT 13.600 RAIL BOLT

- USED TO JOIN HANDRAIL TO HANDRAIL

CODE	MATERIAL
IF158X	STEEL



## ZIPBOLT UT 13.500 ST MAXI

- USED TO JOIN HANDRAIL TO HANDRAIL

CODE	MATERIAL
IF155X	STEEL



## ZIPBOLT UT 11.550 ANGLED RAIL BOLT

- USED TO JOIN HANDRAIL TO AN ANGLED STAIR POST

CODE	MATERIAL
IF157X	STEEL



## ZIPBOLT UT 11.600 MAXI MITRE

- USED TO JOIN HANDRAIL TO HANDRAIL AT AN ANGLE

CODE	MATERIAL
IF156X	STEEL







## ZIPBOLT 13.801 SLIPFIX RAIL BOLT

- USED TO FASTEN HANDRAIL BETWEEN 2 FIXED POSTS ON A LEVEL PLAIN

**CODE**

IF154X

**MATERIAL**

STEEL



## ZIPBOLT 13.950 ANGLED SLIPFIX RAIL BOLT

- USED TO FASTEN HANDRAIL BETWEEN 2 FIXED POSTS ON AN ANGLED STAIR BALUSTRADE

**CODE**

IF164X

**MATERIAL**

STEEL



## ZIPBOLT UT 14.100 STAIR POST TO FLOOR FASTENER

- USED TO FASTEN A STAIR POST TO THE FLOOR

**CODE**

IF162X

**MATERIAL**

STEEL



## ZIPBOLT DRILLING JIG

- ASSISTS IN THE CORRECT ALIGNMENT OF DRILLING HOLES FOR ZIPBOLT INSTALLATION

**CODE**

IF160

**MATERIAL**

PLASTIC



## ZIPBOLT SIDE RATCHET TOOL

- SMALL COMPACT TOOL FOR TIGHTENING ZIPBOLTS

**CODE**

IF163X

**MATERIAL**

STEEL



# WALL MOUNTED



## 68mm BUDGET HANDRAIL BRACKET

- INTERIOR USE ONLY
- SCREWS INCLUDED
- SUITABLE FOR USE WITH FLAT BASE HANDRAIL ONLY

CODE	FINISH
IF451XMB	MATT BLACK
IF451XSC	SATIN CHROME
IF451XSG	BRUSHED GOLD



## 85mm BUDGET HANDRAIL BRACKET

- INTERIOR USE ONLY
- SCREWS INCLUDED
- SUITABLE FOR USE WITH FLAT BASE HANDRAIL ONLY

CODE	FINISH
IF450XMB	MATT BLACK
IF450XSC	SATIN CHROME
IF450XSG	BRUSHED GOLD



## 60mm STANDARD HANDRAIL BRACKET

- INTERIOR USE ONLY, SCREWS ARE INCLUDED

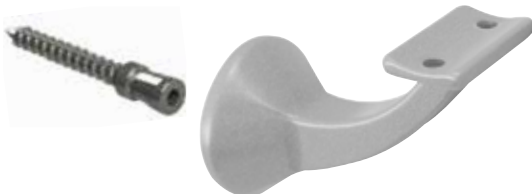
CODE	FINISH
IF448XBF	BRONZE FLORENTINE
IF448XCP	CHROME
IF448XGP	GOLD
IF448XMB	MATT BLACK
IF448XSC	SATIN CHROME



## 80mm STANDARD HANDRAIL BRACKET

- INTERIOR USE ONLY, SCREWS ARE INCLUDED

CODE	FINISH
IF449XBF	BRONZE FLORENTINE
IF449XCP	CHROME
IF449XGP	GOLD
IF449XMB	MATT BLACK
IF449XSC	SATIN CHROME



## 80mm DELUXE HANDRAIL BRACKET

- INTERIOR USE ONLY, SCREWS ARE INCLUDED

CODE	FINISH
IF446XBF	BRONZE FLORENTINE
IF446XCP	CHROME
IF446XGP	GOLD
IF446XMB	MATT BLACK
IF446XSC	SATIN CHROME





## 75mm HEAVY DUTY BRACKET

- SCREWS INCLUDED
- SUITABLE FOR USE WITH FLAT BASE HANDRAIL, IF ROUND HANDRAIL IS REQUIRED, USE CURVED PLATE (BELOW)

CODE	FINISH
IF500XSC	SATIN CHROME (INTERIOR USE ONLY)
IF500XSS	SATIN 316 STAINLESS



## CURVED PLATE FOR HEAVY DUTY BRACKET

- INTERIOR USE ONLY
- WORKS WITH ROUND HANDRAIL 43 TO 50Ø
- CAN ONLY BE USED ON THE HEAVY DUTY BRACKET (ABOVE)

CODE	FINISH
IF502XSC	SATIN CHROME



## 75mm HANDRAIL BRACKET (CURVED CRADLE)

- INTERIOR OR EXTERIOR USE
- NO SCREWS INCLUDED
- WORKS WITH ROUND HANDRAIL 43 TO 50Ø

CODE	FINISH
IF400XSSM	MIRROR 316 STAINLESS
IF400XSSS	SATIN 316 STAINLESS



## 75mm HANDRAIL BRACKET (FLAT CRADLE)

- INTERIOR OR EXTERIOR USE
- NO SCREWS INCLUDED

CODE	FINISH
IF401XSSM	MIRROR 316 STAINLESS
IF401XSSS	SATIN 316 STAINLESS



## 80mm SQUARE HANDRAIL BRACKET

- INTERIOR OR EXTERIOR USE
- SCREW FIXING TO WALL INCLUDED
- WORKS WITH ROUND HANDRAIL 43 TO 50Ø AND ALSO FLAT BASE HANDRAIL

CODE	FINISH
IF458XSSS	SATIN 316 STAINLESS



# WALL MOUNTED



## 80mm HANDRAIL BRACKET (CURVED CRADLE)

- INCLUDES CONCEALED WALL FIXING COVER PLATE
- SCREWS INCLUDED ON 304 STAINLESS VERSION

CODE	FINISH
IF456XMB	MATT BLACK 316 STAINLESS
IF456XS4	SATIN 304 STAINLESS
IF456XSSM	MIRROR 316 STAINLESS
IF456XSSS	SATIN 316 STAINLESS



## 80mm HOLLOW HANDRAIL BRACKET (CURVED CRADLE)

- INCLUDES CONCEALED WALL FIXING COVER PLATE
- THE ARM IS HOLLOW, WHICH ALLOWS FOR ELECTRICAL CABLE TO BE RUN THROUGH IT
- TO BE USED IN CONJUNCTION WITH IF456XS4 (ABOVE)

CODE	FINISH
IF456XS4H	SATIN 304 STAINLESS



## 80mm HANDRAIL BRACKET (FLAT CRADLE)

- INCLUDES CONCEALED WALL FIXING COVER PLATE
- SCREWS INCLUDED ON 304 STAINLESS VERSION

CODE	FINISH
IF457XS4	SATIN 304 STAINLESS
IF457XSSM	MIRROR 316 STAINLESS
IF457XSSS	SATIN 316 STAINLESS



## 80mm HOLLOW HANDRAIL BRACKET (FLAT CRADLE)

- INCLUDES CONCEALED WALL FIXING COVER PLATE
- THE ARM IS HOLLOW, WHICH ALLOWS FOR ELECTRICAL CABLE TO BE RUN THROUGH IT
- TO BE USED IN CONJUNCTION WITH IF457XS4 (ABOVE)

CODE	FINISH
IF457XS4H	SATIN 304 STAINLESS



## 80mm ADJUSTABLE HANDRAIL BRACKET

- INTERIOR OR EXTERIOR USE
- SCREW FIXING TO WALL INCLUDED

CODE	FINISH
IF459XSSM	MIRROR 316 STAINLESS
IF459XSSS	SATIN 316 STAINLESS





## 80mm SQUARE HANDRAIL BRACKET (CURVED CRADLE)

- INTERIOR OR EXTERIOR USE
- SCREWS INCLUDED

### CODE

### FINISH

IF407XSSM

MIRROR 316 STAINLESS



## 80mm SQUARE HANDRAIL BRACKET (FLAT CRADLE)

- INTERIOR OR EXTERIOR USE
- SCREWS INCLUDED

### CODE

### FINISH

IF408XSSM

MIRROR 316 STAINLESS



## 60mm UPRIGHT HANDRAIL BRACKET

- INTERIOR USE ONLY
- SCREWS ARE INCLUDED

### CODE

### FINISH

IF445XCP

CHROME

IF445XSC

SATIN CHROME



## 60mm UPRIGHT STAINLESS HANDRAIL BRACKET (FLAT CRADLE)

- INTERIOR OR EXTERIOR USE
- NO SCREWS INCLUDED

### CODE

### FINISH

IF460XSSS

SATIN 316 STAINLESS



## 60mm UPRIGHT STAINLESS HANDRAIL BRACKET (CURVED CRADLE)

- INTERIOR OR EXTERIOR USE
- NO SCREWS INCLUDED

### CODE

### FINISH

IF461XSSS

SATIN 316 STAINLESS



# GLASS MOUNTED



## 80mm HANDRAIL BRACKET FOR GLASS

- INTERIOR OR EXTERIOR USE
- 3 CRADLES AVAILABLE; CURVED 50.8Ø, CURVED 38.1Ø AND FLAT. SPECIFY AT TIME OF ORDER.

CODE	FINISH
IF452XSSM	MIRROR 316 STAINLESS
IF452XSSS	SATIN 316 STAINLESS



## 80mm ADJUSTABLE HANDRAIL BRACKET FOR GLASS

- INTERIOR OR EXTERIOR USE
- 3 CRADLES AVAILABLE; CURVED 50.8Ø, CURVED 38.1Ø AND FLAT. SPECIFY AT TIME OF ORDER.

CODE	FINISH
IF404XSSM	MIRROR 316 STAINLESS
IF404XSSS	SATIN 316 STAINLESS



## 80mm SQUARE HANDRAIL BRACKET FOR GLASS (CURVED CRADLE)

- INTERIOR OR EXTERIOR USE

CODE	FINISH
IF409XSSM	MIRROR 316 STAINLESS



## 80mm SQUARE HANDRAIL BRACKET FOR GLASS (FLAT CRADLE)

- INTERIOR OR EXTERIOR USE

CODE	FINISH
IF410XSSM	MIRROR 316 STAINLESS



## WALL ROSETTE FOR STAIR HANDRAIL BRACKETS

- 75Ø AND 21mm THICK

CODE	TIMBER SPECIES
JR002R	PINE
JR002T	VICTORIAN ASH



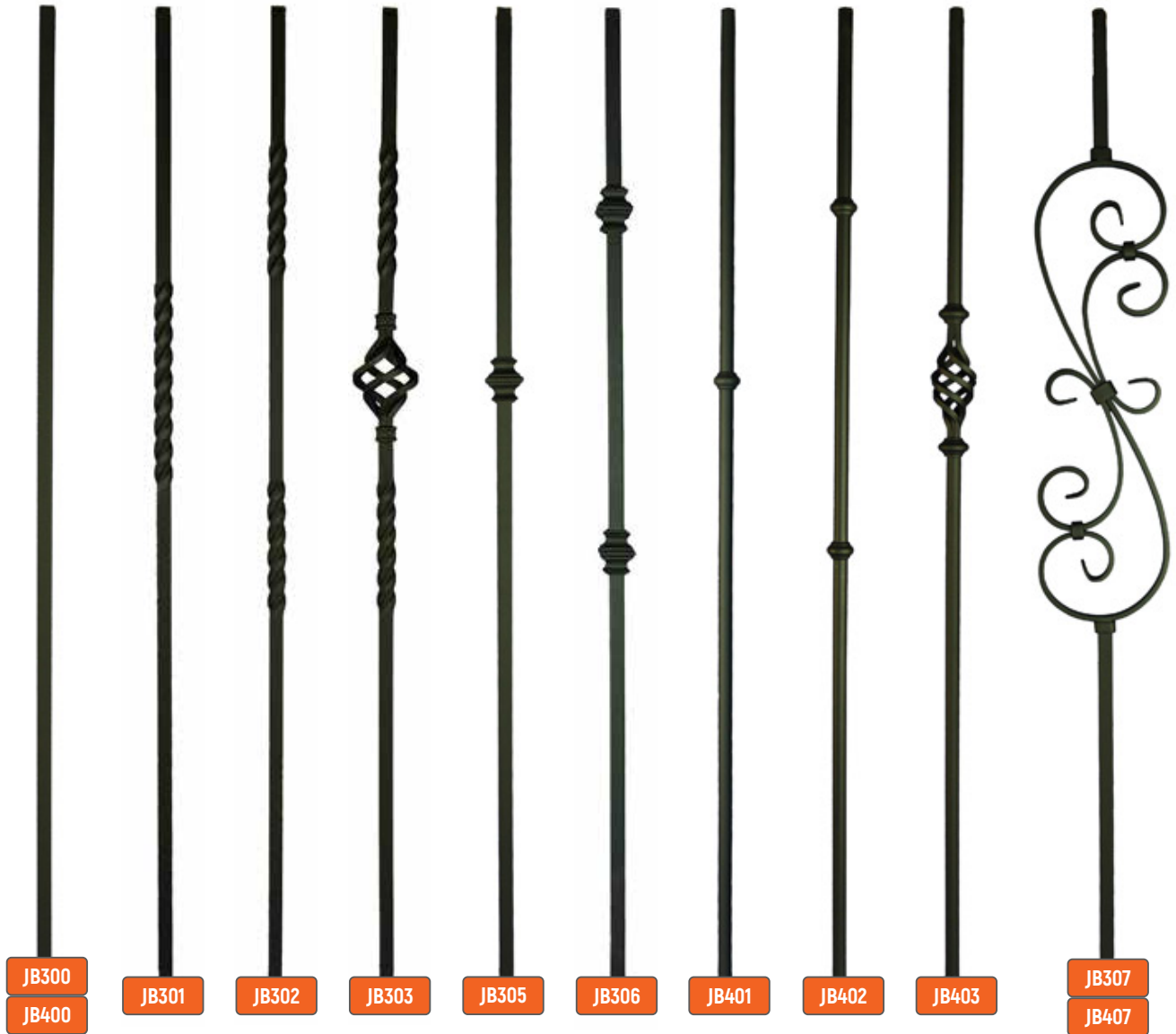


## TIMBER BALUSTERS

CODE	TIMBER SPECIES	DIMENSIONS	DESCRIPTION
JB000R	PINE	1000 x 42 x 42	PLAIN BALUSTER
JB000T	VICTORIAN ASH	1000 x 42 x 42	PLAIN BALUSTER
JB081R	PINE	1000 x 42 x 42	CHAMFERED BALUSTER
JB081T	VICTORIAN ASH	1000 x 42 x 42	CHAMFERED BALUSTER
JB002R	PINE	1000 x 42 x 42	TASMAN BALUSTER
JB002T	VICTORIAN ASH	1000 x 42 x 42	TASMAN BALUSTER
JB024R	PINE	1000 x 42 x 42	No.1 BALUSTER
JB024T	VICTORIAN ASH	1000 x 42 x 42	No.1 BALUSTER
JB135R	PINE	1000 x 42 x 42	REGENT BALUSTER (25Ø PIN TOP)
JB135T	VICTORIAN ASH	1000 x 42 x 42	REGENT BALUSTER (25Ø PIN TOP)
JB008R	PINE	1000 x 42 x 42	3 RINGS 2 FLUTES BALUSTER
JB008T	VICTORIAN ASH	1000 x 42 x 42	3 RINGS 2 FLUTES BALUSTER



# METAL BALUSTERS



## METAL BALUSTERS

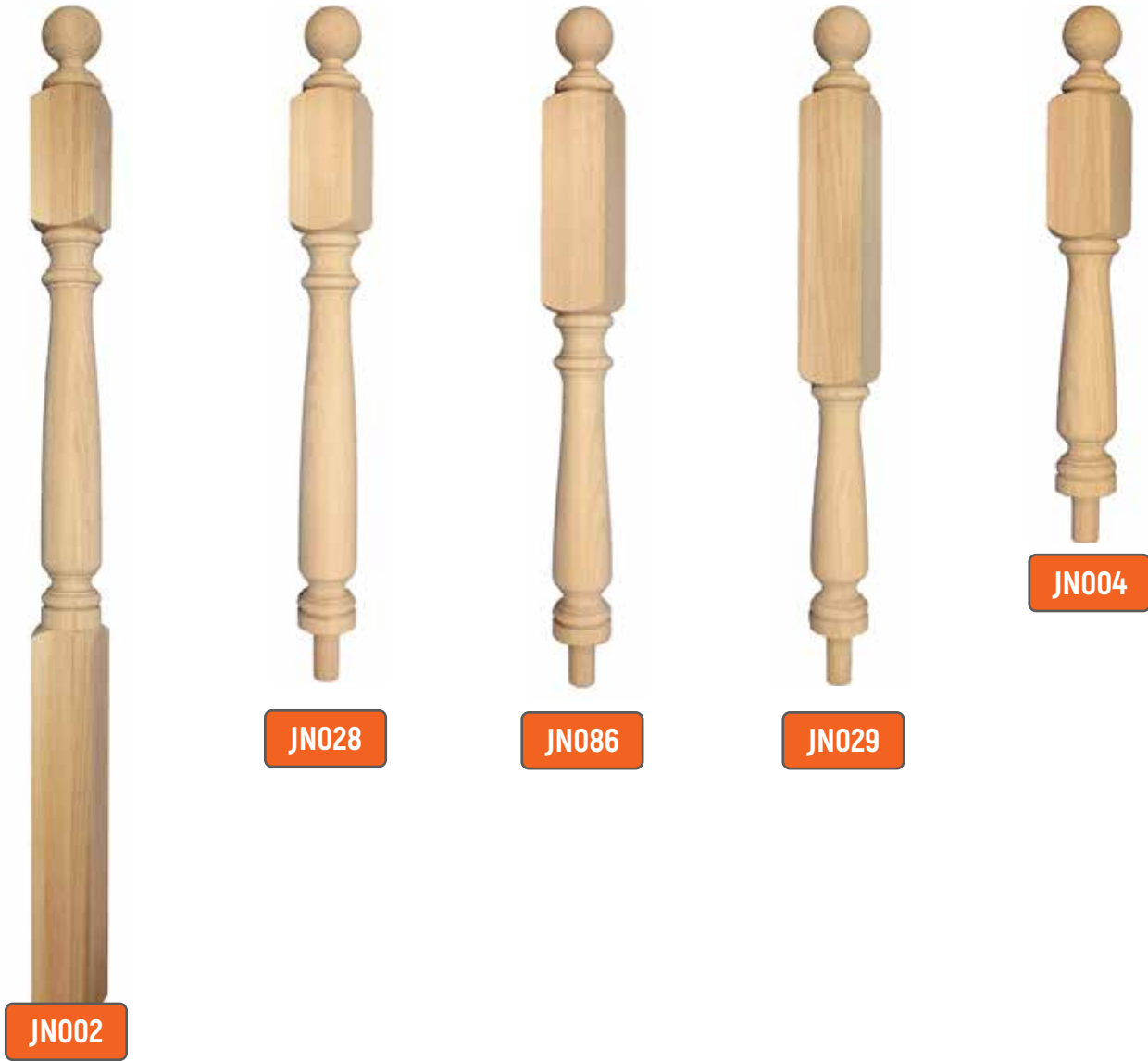
- BALUSTERS ARE HOLLOW WITH A 1.2mm WALL THICKNESS, WHICH MEANS THEY ARE EASY TO CUT, YET STILL STRONG ENOUGH NOT TO BEND WITHOUT EXCESSIVE FORCE.
- ALL STYLES ARE A SMOOTH POWDER COATED SATIN BLACK FINISH.
- THE 1090mm HEIGHT ALLOWS FOR THE BALUSTER TO BE USED ON THE RAKE, LEVEL AND CUT STRING OF A STAIRCASE.

CODE	FINISH	DIMENSIONS	DESCRIPTION
JB300	SATIN BLACK POWDER COAT	1090 x 16 x 16	SQUARE PLAIN
JB301	SATIN BLACK POWDER COAT	1090 x 16 x 16	SQUARE SINGLE TWIST
JB302	SATIN BLACK POWDER COAT	1090 x 16 x 16	SQUARE DOUBLE TWIST
JB303	SATIN BLACK POWDER COAT	1090 x 16 x 16	SQUARE CAGE
JB305	SATIN BLACK POWDER COAT	1090 x 16 x 16	SQUARE SINGLE KNUCKLE
JB306	SATIN BLACK POWDER COAT	1090 x 16 x 16	SQUARE DOUBLE KNUCKLE
JB307	SATIN BLACK POWDER COAT	1090 x 16 x 16	SQUARE "S" SCROLL
JB400	SATIN BLACK POWDER COAT	1090 x 16∅	ROUND PLAIN
JB401	SATIN BLACK POWDER COAT	1090 x 16∅	ROUND SINGLE KNUCKLE
JB402	SATIN BLACK POWDER COAT	1090 x 16∅	ROUND DOUBLE KNUCKLE
JB403	SATIN BLACK POWDER COAT	1090 x 16∅	ROUND CAGE
JB407	SATIN BLACK POWDER COAT	1090 x 16∅	ROUND "S" SCROLL





# TASMAN TURNED STAIR POSTS



## TASMAN TURNED STAIR POSTS

- THESE POSTS MATCH THE TASMAN TURNED BALUSTER (JB002) ON PG 23
- THE PIN ON THE BOTTOM OF THE STAIR POSTS FITS INTO THE HOLE ON THE EXTENSION POSTS ON PAGE 27

CODE	TIMBER SPECIES	DIMENSIONS	DESCRIPTION
JN002R	PINE	1500 x 90 x 90	TASMAN STANDARD POST (200mm TOP BLOCK)
JN002T	VICTORIAN ASH	1500 x 90 x 90	TASMAN STANDARD POST (200mm TOP BLOCK)
JN028R	PINE	880 x 90 x 90	TASMAN STANDARD POST with PIN (200mm TOP BLOCK)
JN028T	VICTORIAN ASH	880 x 90 x 90	TASMAN STANDARD POST with PIN (200mm TOP BLOCK)
JN086R	PINE	880 x 90 x 90	TASMAN TOP-LANDING POST with PIN (300mm TOP BLOCK)
JN086T	VICTORIAN ASH	880 x 90 x 90	TASMAN TOP-LANDING POST with PIN (300mm TOP BLOCK)
JN029R	PINE	880 x 90 x 90	TASMAN MID-LANDING POST with PIN (400mm TOP BLOCK)
JN029T	VICTORIAN ASH	880 x 90 x 90	TASMAN MID-LANDING POST with PIN (400mm TOP BLOCK)
JN004R	PINE	670 x 90 x 90	TASMAN 3-KITE WINDER POST with PIN (200mm TOP BLOCK)
JN004T	VICTORIAN ASH	670 x 90 x 90	TASMAN 3-KITE WINDER POST with PIN (200mm TOP BLOCK)



# 3 RINGS 2 FLUTES STAIR POSTS



JN063



JN064



JN077



JN065



JN068

## 3 RINGS 2 FLUTES STAIR POSTS

- THESE POSTS MATCH THE 3 RINGS 2 FLUTES BALUSTER (JB008) ON PG 23
- THE PIN ON THE BOTTOM OF THE STAIR POSTS FITS INTO THE HOLE ON THE EXTENSION POSTS ON PAGE 27

CODE	TIMBER SPECIES	DIMENSIONS	DESCRIPTION
JN063R	PINE	1500 x 90 x 90	3 RINGS 2 FLUTES STANDARD POST (200mm TOP BLOCK)
JN063T	VICTORIAN ASH	1500 x 90 x 90	3 RINGS 2 FLUTES STANDARD POST (200mm TOP BLOCK)
JN064R	PINE	880 x 90 x 90	3 RINGS 2 FLUTES STANDARD POST with PIN (200mm TOP BLOCK)
JN064T	VICTORIAN ASH	880 x 90 x 90	3 RINGS 2 FLUTES STANDARD POST with PIN (200mm TOP BLOCK)
JN077R	PINE	880 x 90 x 90	3 RINGS 2 FLUTES TOP-LANDING POST with PIN (300mm TOP BLOCK)
JN077T	VICTORIAN ASH	880 x 90 x 90	3 RINGS 2 FLUTES TOP-LANDING POST with PIN (300mm TOP BLOCK)
JN065R	PINE	880 x 90 x 90	3 RINGS 2 FLUTES MID-LANDING POST with PIN (400mm TOP BLOCK)
JN065T	VICTORIAN ASH	880 x 90 x 90	3 RINGS 2 FLUTES MID-LANDING POST with PIN (400mm TOP BLOCK)
JN068R	PINE	670 x 90 x 90	3 RINGS 2 FLUTES 3-KITE WINDER POST with PIN (200mm TOP BLOCK)
JN068T	VICTORIAN ASH	670 x 90 x 90	3 RINGS 2 FLUTES 3-KITE WINDER POST with PIN (200mm TOP BLOCK)





## STAIR POST EXTENSIONS & PLAIN STAIR POSTS

• USED TO EXTEND THE LENGTH OF STAIR POSTS WITH PINS SHOWN ON PG 25 AND 26

CODE	TIMBER SPECIES	DIMENSIONS	DESCRIPTION
JX001R	PINE	650 x 90 x 90	650mm EXTENSION POST with 38mm HOLE
JX001T	VICTORIAN ASH	650 x 90 x 90	650mm EXTENSION POST with 38mm HOLE
JX002R	PINE	970 x 90 x 90	970mm EXTENSION POST with 38mm HOLE
JX002T	VICTORIAN ASH	970 x 90 x 90	970mm EXTENSION POST with 38mm HOLE
JX003R	PINE	1500 x 90 x 90	1500mm EXTENSION POST with 38mm HOLE
JX003T	VICTORIAN ASH	1500 x 90 x 90	1500mm EXTENSION POST with 38mm HOLE
JN000R	PINE	1500 x 90 x 90	90mm PLAIN POST
JN000T	VICTORIAN ASH	1500 x 90 x 90	90mm PLAIN POST
JN230R	PINE	1500 x 115 x 115	115mm PLAIN POST
JN230T	VICTORIAN ASH	1500 x 115 x 115	115mm PLAIN POST



# PRESTIGE STAIR POSTS



## PRESTIGE STAIR POSTS

- THE LONG DROP-IN PANELS ARE DESIGNED TO FIT INTO THE RECESS ON THE RECESSED POSTS. THE BOTTOM OF THE PANEL SITS BELOW THE SURFACE OF THE POST, BUT THE MOULDING ON THE PANEL SITS PARTIALLY ABOVE THE SURFACE OF THE POST.
- THE SHORT AND MEDIUM DROP-IN PANELS DO NOT WORK WITH THE RECESSED POSTS, AS THEY ARE TOO SHORT FOR THE RECESS. THESE WOULD INSTEAD BE USED ON THE PLAIN POSTS WHERE YOU WOULD NEED TO MACHINE YOUR OWN RECESS TO SUIT.

CODE	TIMBER SPECIES	DIMENSIONS	DESCRIPTION
JN213R	PINE	1500 x 155 x 155	155mm PLAIN POST
JN214R	PINE	1500 x 155 x 155	155mm RECESSED POST (THE RECESS SUITS THE LONG DROP-IN PANELS)
JN230R	PINE	1500 x 115 x 115	115mm PLAIN POST
JN234R	PINE	1500 x 115 x 115	115mm RECESSED POST (THE RECESS SUITS THE LONG DROP-IN PANELS)
JN148R	PINE	570 x 147 x 147	SKIRT FOR 115mm POST (SUPPLIED AS 4 MITRE LOCK PANELS AND A LENGTH OF MOULD)
JN228R	PINE	570 x 187 x 187	SKIRT FOR 155mm POST (SUPPLIED AS 4 MITRE LOCK PANELS AND A LENGTH OF MOULD)
JN220R	PINE	115 x 115	SHORT DROP-IN PANEL FOR 155mm POST (ORDER 4 TO DO ALL 4 SIDES OF THE POST)
JN221R	PINE	332 x 115	MEDIUM DROP-IN PANEL FOR 155mm POST (ORDER 4 TO DO ALL 4 SIDES OF THE POST)
JN222R	PINE	510 x 115	LONG DROP-IN PANEL FOR 155mm POST (ORDER 4 TO DO ALL 4 SIDES OF THE POST)
JN240R	PINE	87 x 87	SHORT DROP-IN PANEL FOR 115mm POST (ORDER 4 TO DO ALL 4 SIDES OF THE POST)
JN241R	PINE	332 x 87	MEDIUM DROP-IN PANEL FOR 115mm POST (ORDER 4 TO DO ALL 4 SIDES OF THE POST)
JN242R	PINE	510 x 87	LONG DROP-IN PANEL FOR 115mm POST (ORDER 4 TO DO ALL 4 SIDES OF THE POST)



# POST MOULD & SCALLOPED POST CAPS



## MOULDING FOR STAIR POSTS

- DECORATIVE MOULDING FOR PLAIN AND PRESTIGE POSTS

CODE	TIMBER SPECIES
JM002R	PINE



## 90mm SCALLOPED POST CAP

- FITS OVER THE TOP OF A 90 x 90 POST

CODE	TIMBER SPECIES	CODE	TIMBER SPECIES
JN136A	AMERICAN OAK	JN136N	SPOTTED GUM
JN136H	BLACKBUTT	JN136Q	KWILA
JN136J	JARRAH	JN136R	PINE
JN136M	MERANTI	JN136T	VICTORIAN ASH



## 115mm SCALLOPED POST CAP

- FITS OVER THE TOP OF A 115 x 115 POST

CODE	TIMBER SPECIES	CODE	TIMBER SPECIES
JN138A	AMERICAN OAK	JN138N	SPOTTED GUM
JN138H	BLACKBUTT	JN138Q	KWILA
JN138J	JARRAH	JN138R	PINE
JN138M	MERANTI	JN138T	VICTORIAN ASH



## 155mm SCALLOPED POST CAP

- FITS OVER THE TOP OF A 155 x 155 POST

CODE	TIMBER SPECIES
JN210R	PINE
JN210T	VICTORIAN ASH



# PYRAMID, BUDGET CAPS & BALL TOPS



## 90mm PYRAMID POST CAP

- FITS OVER THE TOP OF A 90 x 90 POST

CODE	TIMBER SPECIES	CODE	TIMBER SPECIES
JN160A	AMERICAN OAK	JN160N	SPOTTED GUM
JN160H	BLACKBUTT	JN160Q	KWILA
JN160J	JARRAH	JN160R	PINE
JN160M	MERANTI	JN160T	VICTORIAN ASH



## 115mm PYRAMID POST CAP

- FITS OVER THE TOP OF A 115 x 115 POST

CODE	TIMBER SPECIES
JN161R	PINE
JN161T	VICTORIAN ASH



## 90mm "BUDGET" POST CAP

- FITS OVER THE TOP OF A 90 x 90 POST

CODE	TIMBER SPECIES
JN203R	PINE



## BALL TOPS FOR STAIRS

- FITS ON TOP OF A 90 x 90 POST.
- PIN DIAMETER IS 38MM

CODE	TIMBER SPECIES
JN025R	PINE
JN025T	VICTORIAN ASH



## WEDGE FOR STAIRS

- USED TO HOLD TREADS AND RISERS IN PLACE

CODE	TIMBER SPECIES
JT017	VARIED





## 33mm STAIR TREADS

· NONE OF THESE TREADS ARE SUITABLE FOR EXTERIOR USE

CODE	TIMBER SPECIES	DIMENSIONS	TYPE
JT001A	AMERICAN OAK	1000 x 285 x 33	PLAIN
JT001R	PINE (FINGER JOINTED)	1000 x 285 x 33	PLAIN
JT001T	VICTORIAN ASH	1000 x 285 x 33	PLAIN
JT004A	AMERICAN OAK	1200 x 285 x 33	PLAIN
JT004R	PINE (FINGER JOINTED)	1200 x 285 x 33	PLAIN
JT004T	VICTORIAN ASH	1200 x 285 x 33	PLAIN
JT002A	AMERICAN OAK	1000 x 285 x 33	BULLNOSED
JT002R	PINE (FINGER JOINTED)	1000 x 285 x 33	BULLNOSED
JT002T	VICTORIAN ASH	1000 x 285 x 33	BULLNOSED
JT005A	AMERICAN OAK	1200 x 285 x 33	BULLNOSED
JT005R	PINE (FINGER JOINTED)	1200 x 285 x 33	BULLNOSED
JT005T	VICTORIAN ASH	1200 x 285 x 33	BULLNOSED

## 43mm STAIR TREADS

· NONE OF THESE TREADS ARE SUITABLE FOR EXTERIOR USE



CODE	TIMBER SPECIES	DIMENSIONS
JT007A	AMERICAN OAK	1200 x 285 x 43
JT007T	VICTORIAN ASH	1200 x 285 x 43

## 66mm STAIR TREADS

· NONE OF THESE TREADS ARE SUITABLE FOR EXTERIOR USE



CODE	TIMBER SPECIES	DIMENSIONS
JT008A	AMERICAN OAK	1200 x 280 x 66
JT008T	VICTORIAN ASH	1200 x 280 x 66

## STAIR RISERS

· NONE OF THESE RISERS ARE SUITABLE FOR EXTERIOR USE



CODE	TIMBER SPECIES	DIMENSIONS
JT010A	AMERICAN OAK	1000 x 190 x 19
JT010R	PINE	1000 x 190 x 19
JT010T	VICTORIAN ASH	1000 x 190 x 19
JT011A	AMERICAN OAK	1200 x 190 x 19
JT011R	PINE	1200 x 190 x 19
JT011T	VICTORIAN ASH	1200 x 190 x 19



# TIMBER DOWELS



13mm

## 13mm Ø TIMBER DOWEL

CODE	TIMBER SPECIES	CODE	TIMBER SPECIES
JD013A	AMERICAN OAK	JD013N	SPOTTED GUM
JD013H	BLACKBUTT	JD013Q	KWILA
JD013J	JARRAH	JD013R	PINE (FINGER JOINT)
JD013M	MERANTI	JD013T	VICTORIAN ASH



19mm

## 19mm Ø TIMBER DOWEL

CODE	TIMBER SPECIES	CODE	TIMBER SPECIES
JD019A	AMERICAN OAK	JD019N	SPOTTED GUM
JD019H	BLACKBUTT	JD019Q	KWILA
JD019J	JARRAH	JD019R	PINE (FINGER JOINT)
JD019M	MERANTI	JD019T	VICTORIAN ASH



25mm

## 25mm Ø TIMBER DOWEL

CODE	TIMBER SPECIES	CODE	TIMBER SPECIES
JD025A	AMERICAN OAK	JD025N	SPOTTED GUM
JD025H	BLACKBUTT	JD025Q	KWILA
JD025J	JARRAH	JD025R	PINE (FINGER JOINT)
JD025M	MERANTI	JD025T	VICTORIAN ASH



32mm

## 32mm Ø TIMBER DOWEL

CODE	TIMBER SPECIES	CODE	TIMBER SPECIES
JD032A	AMERICAN OAK	JD032N	SPOTTED GUM
JD032H	BLACKBUTT	JD032Q	KWILA
JD032J	JARRAH	JD032R	PINE (FINGER JOINT)
JD032M	MERANTI	JD032T	VICTORIAN ASH



38mm

## 38mm Ø TIMBER DOWEL

CODE	TIMBER SPECIES	CODE	TIMBER SPECIES
JD038A	AMERICAN OAK	JD038N	SPOTTED GUM
JD038H	BLACKBUTT	JD038Q	KWILA
JD038J	JARRAH	JD038R	PINE (FINGER JOINT)
JD038M	MERANTI	JD038T	VICTORIAN ASH







60mm

## 60mm Ø TIMBER DOWEL

CODE	TIMBER SPECIES
JD060A	AMERICAN OAK
JD060M	MERANTI
JD060R	PINE (FINGER JOINTED)
JD060T	VICTORIAN ASH



22mm

## 22mm Ø TIMBER 1/2 DOWEL

· 22mm WIDTH x 11mm HEIGHT

CODE	TIMBER SPECIES	CODE	TIMBER SPECIES
JD122A	AMERICAN OAK	JD122N	SPOTTED GUM
JD122H	BLACKBUTT	JD122Q	KWILA
JD122J	JARRAH	JD122R	PINE (FINGER JOINT)
JD122M	MERANTI	JD122T	VICTORIAN ASH



30mm

## 30mm Ø TIMBER 1/2 DOWEL

· 30mm WIDTH x 15mm HEIGHT

CODE	TIMBER SPECIES	CODE	TIMBER SPECIES
JD130A	AMERICAN OAK	JD130N	SPOTTED GUM
JD130H	BLACKBUTT	JD130Q	KWILA
JD130J	JARRAH	JD130R	PINE (FINGER JOINT)
JD130M	MERANTI	JD130T	VICTORIAN ASH



40mm

## 40mm Ø TIMBER 1/2 DOWEL

· 40mm WIDTH x 20mm HEIGHT

CODE	TIMBER SPECIES	CODE	TIMBER SPECIES
JD140A	AMERICAN OAK	JD140N	SPOTTED GUM
JD140H	BLACKBUTT	JD140Q	KWILA
JD140J	JARRAH	JD140R	PINE (FINGER JOINT)
JD140M	MERANTI	JD140T	VICTORIAN ASH

**WE ALSO MANUFACTURE TIMBER DOWELS  
IN 43mm & 50mm DIAMETERS,  
REFER TO PAGES 5 AND 8.**



Stainless steel wire balustrade is a great look, but trying to understand the different regulations, types of wire, range of fittings and various tools that are available can initially be quite daunting.

To try and make this process easier we have provided a written guide below, as well as combining the parts into a range of systems over the next 3 pages. If you still need some clarity, then please feel free to make contact with us via phone or email.

The first question we always ask someone is what is the maximum drop from the surface you are standing on to the ground below. If the answer is less than 1 metre, then the number of wires and tension required is not covered by any Australian Standard, and as a result you can do whatever you want.

If the answer is greater than 4 metres, then you are not allowed to do horizontal wire balustrade; but are allowed to do vertical wire balustrade. If this is the case, then we suggest that you contact us to get more info on what system would work best in this application.

If the drop is between 1 and 4 metres, then you need to comply with the Australian National Construction Code. Trying to get your head around how this code will impact on the number of wires required and the tension that they need to be under is quite a challenge, so we suggest you work to the following guidelines.

- Your handrail height needs to be a minimum of 1000mm (1.0 metre).
- Working on a gap of 960mm (underside of the handrail to the floor/deck), the maximum gap between each wire is 80mm, which means you will need 11 strands of wire.
- Using 3.2mm wire in either a 1x19 or 7x7 configuration, you will need to have a support post every 1500mm. The wire can run through these posts if it is in a straight line, and only needs to be fixed to the end posts.
- If the wire needs to change direction, then we suggest that you terminate the wire at this post, and restart it in the new direction.

If you follow these guidelines (and the ones specific to the systems on the next 3 pages), then you should have no issues in getting your new wire balustrade approved.

We also get regularly asked as to what is the difference between 1x19 and 7x7 wire. The 1x19 is a smoother, nicer looking wire and is more rigid (less flexible) than the 7x7. It also has a higher breaking strain. The 7x7 is not as nice a look or feel but is more flexible, which is important for the purpose of wrapping around a thimble (see System 3 and 4).

In simple terms, if you are using fittings that need to be crimped with a Hydraulic Swager (IF120X or IF119X) or Hex Hand Swager (IF135X), then always go with the 1x19 cable, as it looks the best.



# WIRE BALUSTRADE SYSTEMS

35

STAINLESS STEEL BALUSTRADE COMPONENTS

## System 1



Fix To: Timber Posts. Maximum straight line run length is 10 metres.

Best Wire: 3.2mm 1x19; but can also use 3.2mm 7x7.

Suitable For: Horizontal and Angled (Stair) Balustrade.

Fittings Required: 2 x Coach Screw (SSW054-6 or SSW055-6), 1 x Bottle Screw (SSW050-6 or SSW051-6), 1 x Fork Terminal (SSW053-6).

Tools Required: Hydraulic Swager (IF120X or IF119X), Wire Cutter (IF122X), Tensioning Spanner (IF133X).

Extra Info: Coach Screws could be swapped out for Saddles (SSW058-6).

## System 2



Fix To: Metal Posts. Maximum straight line run length is 10 metres.

Best Wire: 3.2mm 1x19; but can also use 3.2mm 7x7.

Suitable For: Horizontal and Angled (Stair) Balustrade.

Fittings Required: 2 x Rivet Nut Right (IF127X), 2 x Eye Bolt (SSW057-6), 1 x Bottle Screw (SSW050-6 or SSW051-6), 1 x Fork Terminal (SSW053-6).

Tools Required: Hydraulic Swager (IF120X or IF119X), Rivet Nut Inserter (IF124X), Wire Cutter (IF122X), Tensioning Spanner (IF133X).

Extra Info: The rivet nut will work on a wall thickness of between 0.7 and 4mm. Also, Rivet Nuts and Eye Bolts could be swapped out for Saddles (SSW058-6)

## System 3



Fix To: Timber or Metal Posts. Maximum straight line run length is 10 metres.

Best Wire: 3.2mm 7x7. Can't use 3.2mm 1x19, as it is too rigid and won't smoothly loop around the thimble.

Suitable For: Horizontal and Angled (Stair) Balustrade.

Fittings Required: 2 x Saddle (SSW058-6), 2 x Thimble (SSW061-6), 2 x Ferrule (SSW060-6), 1 x Bottle Screw (SSW059-6).

Tools Required: Hand Swager and Cutter (IF134X), Tensioning Spanner (IF133X).

## System 4



Fix To: Metal Posts. Maximum straight line run length is 10 metres.

Best Wire: 3.2mm 7x7. Can't use 3.2mm 1x19, as it is too rigid and won't smoothly loop around the thimble.

Suitable For: Horizontal and Angled (Stair) Balustrade.

Fittings Required: 2 x Rivet Nut Right (IF127X), 2 x Eye Bolt (SSW057-6), 2 x Thimble (SSW061-6), 2 x Ferrule (SSW060-6), 1 x Bottle Screw (SSW059-6).

Tools Required: Hand Swager and Cutter (IF134X), Rivet Nut Inserter (IF124X), Tensioning Spanner (IF133X).

Extra Info: The rivet nut will work on a wall thickness of between 0.7 and 4mm.



**System 5**

Fix To: Timber Posts. Maximum straight line run length is 6 metres.

Best Wire: 3.2mm 1x19; but can also use 3.2mm 7x7.

Suitable For: Horizontal and Angled (Stair) Balustrade.

Fittings Required: 1 x Lag Terminal Right (SSW052-6), 1 x Lag Terminal Left (SSW069-6).

Tools Required: Hydraulic Swager (IF120X or IF119X), Wire Cutter (IF122X), Tensioning Spanner x 2 (IF133X).

Extra Info: Tensioning the wire is a 2 person job. You need to be synchronized when winding the terminals into the posts.

**System 6**

Fix To: Timber Posts. Maximum straight line run length is 10 metres.

Best Wire: 3.2mm 1x19, but can also use 3.2mm 7x7.

Suitable For: Horizontal and Angled (Stair) Balustrade.

Fittings Required: 1 x Lag Terminal Right (SSW052-6), 1 x Bottle Screw (SSW049-6).

Tools Required: Hydraulic Swager (IF120X or IF119X), Wire Cutter (IF122X), Tensioning Spanner (IF133X).

**System 7**

Fix To: Timber Posts. Maximum straight line run length is 10 metres.

Best Wire: 3.2mm 1x19; but can also use 7x7.

Suitable For: Horizontal Balustrade.

Fittings Required: 1 x Threaded Insert Right (SSW047-6), 1 x Threaded Insert Left (SSW048-6),

1 x Threaded Terminal Right (SSW056-6), 1 x Threaded Terminal Left (SSW070-6).

Tools Required: Hydraulic Swager (IF120X or IF119X), Wire Cutter (IF122X), Tensioning Spanner x 2 (IF133X).

Extra Info: Tensioning the wire is a 2 person job. You need to be synchronized when winding the terminals into the inserts. This system can also be used for angled (stair) balustrade, but to do so you will need to add the Swivel Connector Right (SSW043-6) and Swivel Connector Left (SSW044-6).

**System 8**

Fix To: Metal Posts. Maximum straight line run length is 6 metres.

Best Wire: 3.2mm 1x19; but can also use 3.2mm 7x7.

Suitable For: Horizontal Balustrade.

Fittings Required: 1 x Rivet Nut Right (IF127X), 1 x Rivet Nut Left (IF138X), 1 x Thread Terminal Right (SSW056-6),

1 x Thread Terminal Left (SSW070-6).

Tools Required: Hydraulic Swager (IF120X or IF119X), Rivet Nut Inserter (IF124X), Wire Cutter (IF122X), Tensioning Spanner x 2 (IF133X).

Extra Info: Tensioning the wire is a 2 person Job. You need to be synchronized when winding the terminals into the rivet nuts. The rivet nut will work on a wall thickness of between 0.7 and 4mm. This system can also be used for angled (stair) balustrade, but to do so you will need to add the Swivel Connector Right (SSW043-6) and Swivel Connector Left (SSW044-6) or another option is to swap out the Rivet Nuts (Right and Left) for the Flip Lock Connector Right (SSW045-6) and Flip Lock Connector Left (SSW046-6).



## System 9



Fix To: Timber or Metal Posts. Maximum straight line run length is 10 metres.

Best Wire: 3.2mm 1x19; but can also use 3.2mm 7x7.

Suitable For: Horizontal Balustrade.

Fittings Required: 1 x Dome Terminal (SSW071-6), 1 x Thread Terminal Right (SSW056-6), 1 x Hex Head Tensioner (SSW072-6).

Tools Required: Hydraulic Swager (IF120X or IF119X), Wire Cutter (IF122X).

Extra Info: Unlike all the other systems that fits to the inside face of the posts, this one fastens from the outside face of the posts. This system can also be used for angled (stair) balustrade, but to do so you will need to add the 37 degree Large Collar (SSW086-6 or SSW088-6) and 37 degree Small Collar (SSW085-6 or SSW087-6). The different collars are based on the type of surface you are fixing to (flat or round). Refer pg 43 for more info.

## System 10



Fix To: Metal (Hollow) Posts. Maximum straight line run length is 10 metres.

Best Wire: 3.2mm 1x19; but can also use 3.2mm 7x7.

Suitable For: Horizontal Balustrade.

Fittings Required: 1 x Swage Terminal (SSW065-6), 1 x Flip Toggle (SSW073-6), 1 x Thread Terminal Right (SSW056-6), 1 x Hex Head Tensioner (SSW072-6).

Tools Required: Hydraulic Swager (IF120X or IF119X), Wire Cutter (IF122X).

Extra Info: The Flip Toggle is inserted into a metal post, then it flips to 90 degrees and grabs onto the inside surface of the post. The other end of the wire fixes to the outside of the posts (as per System 9). This system can also be used for angled (stair) balustrade, but to do so you will need to add the 37 degree Large Collar (SSW086-6 or SSW088-6). The different collars are based on the type of surface you are fixing to (flat or round). Refer pg 43 for more info.

## System 11



Fix To: Timber Posts. Maximum straight line run length is 10 metres.

Best Wire: 3.2mm 1x19; but can also use 3.2mm 7x7.

Suitable For: Horizontal Balustrade.

Fittings Required: 2 x Threaded Insert (SSW063-6), 2 x Swage Terminal (SSW065-6), 1 x Tension Rod (SSW066-6), 1 x Finishing Cap (SSW067-6), 1 x Stop Bolt (SSW068-6).

Tools Required: Hex Hand Swager (IF135X), Wire Cutter (IF122X), Tensioning Spanner (IF133X).

## System 12



Fix To: Metal Posts. Maximum straight line run length is 6 metres.

Best Wire: 3.2mm 1x19; but can also use 3.2mm 7x7.

Suitable For: Horizontal Balustrade

Fittings Required: 2 x Rivet Nut (SSW064-6), 2 x Swage Terminal (SSW065-6), 1 x Tension Rod (SSW066-6), 1 x Finishing Cap (SSW067-6), 1 Stop Bolt (SSW068-6).

Tools Required: Hex Hand Swager (IF135X), Rivet Nut Inserter (IF124X), Wire Cutter (IF122X), Tensioning Spanner (IF133X).





# WIRE CABLE & BALUSTRADE FITTINGS



## 3.2mm Ø 1x19 WIRE CABLE ROPE

- 316 STAINLESS STEEL

CODE	LENGTH
SSW001E-050	50 metre REEL
SSW001E-100	100 metre REEL
SSW001E-305	305 metre REEL
SSW001-M	Per METRE



## 3.2mm Ø 7x7 WIRE CABLE ROPE

- 316 STAINLESS STEEL

CODE	LENGTH
SSW020E-050	50 metre REEL
SSW020E-100	100 metre REEL
SSW020E-305	305 metre REEL
SSW020-M	Per METRE



## 4.0mm Ø 1x19 WIRE CABLE ROPE

- 316 STAINLESS STEEL

CODE	LENGTH
SSW010E-305	305 metre REEL
SSW010-M	Per METRE



## LONG FORK BOTTLE SCREW

- 316 STAINLESS STEEL
- MINIMUM LENGTH 160mm. MAXIMUM LENGTH 225mm.
- YOU NEED A HYDRAULIC SWAGER (PG 46) TO SECURE WIRE TO THE END OF THIS FITTING

CODE	WIRE DIAMETER
SSW050-6	3.2mm
SSW100-6	4.0mm



## FORK TERMINAL

- 316 STAINLESS STEEL
- OVERALL LENGTH 75mm
- YOU NEED A HYDRAULIC SWAGER (PG 46) TO SECURE WIRE TO THE END OF THIS FITTING

CODE	WIRE DIAMETER
SSW053-6	3.2mm
SSW101-6	4.0mm



## SHORT FORK BOTTLE SCREW

- 316 STAINLESS STEEL
- MINIMUM LENGTH 115mm. MAXIMUM LENGTH 155mm.
- YOU NEED A HYDRAULIC SWAGER (PG 46) TO SECURE WIRE TO THE END OF THIS FITTING

### CODE

### WIRE DIAMETER

SSW051-6

3.2mm



## LAG BOTTLE SCREW

- 316 STAINLESS STEEL
- MINIMUM LENGTH 195mm. MAXIMUM LENGTH 260mm.
- YOU NEED A HYDRAULIC SWAGER (PG 46) TO SECURE WIRE TO THE END OF THIS FITTING

### CODE

### WIRE DIAMETER

SSW049-6

3.2mm



## LAG TERMINAL

- 316 STAINLESS STEEL
- OVERALL LENGTH 90mm. THREAD LENGTH 40mm.
- YOU NEED A HYDRAULIC SWAGER (PG 46) TO SECURE WIRE TO THE END OF THIS FITTING

### CODE

### WIRE DIAMETER

### THREAD DIRECTION

SSW052-6

3.2mm

RIGHT

SSW069-6

3.2mm

LEFT



## THREAD M6 TERMINAL

- 316 STAINLESS STEEL
- OVERALL LENGTH 90mm. THREAD LENGTH 40mm.
- YOU NEED A HYDRAULIC SWAGER (PG 46) TO SECURE WIRE TO THE END OF THIS FITTING

### CODE

### WIRE DIAMETER

### THREAD DIRECTION

SSW056-6

3.2mm

RIGHT

SSW070-6

3.2mm

LEFT



## BOTTLE SCREW (FORK BOTH ENDS)

- 316 STAINLESS STEEL
- MINIMUM LENGTH 135mm. MAXIMUM LENGTH 195mm.
- YOU NEED A HAND SWAGER (PG 46) TO SECURE WIRE TO THE END OF THIS FITTING

### CODE

### WIRE DIAMETER

SSW059-6

3.2mm

# WIRE BALUSTRADE FITTINGS



## COACH SCREW

- 316 STAINLESS STEEL

CODE	LENGTH (EXCLUDING EYELET)
SSW054-6	40mm
SSW055-6	60mm



## EYE BOLT

- 316 STAINLESS STEEL
- M6 THREAD x 10mm LENGTH

CODE
SSW057-6



## SADDLE

- 316 STAINLESS STEEL

CODE
SSW058-6



## FERRULE

- NICKEL PLATED COPPER
- SUITED TO 7x7 WIRE

CODE	WIRE DIAMETER
SSW060-6	3.2mm



## THIMBLE

- 316 STAINLESS STEEL
- SUITED TO 7x7 WIRE

CODE	WIRE DIAMETER
SSW061-6	3.2mm





# WIRE BALUSTRADE FITTINGS

41

STAINLESS STEEL BALUSTRADE COMPONENTS



## SWIVEL CONNECTORS



- 316 STAINLESS STEEL
- OVERALL LENGTH 70mm. THREAD LENGTH 20mm.
- USE WITH SYSTEM 7 AND 8 WHEN ANGLED (STAIR) BALUSTRADE IS NEEDED.

CODE	THREAD DIRECTION AND SIZE
SSW043-6	RIGHT M6
SSW044-6	LEFT M6

## FLIP LOCK NUT



- 316 STAINLESS STEEL
- OVERALL LENGTH 45mm.
- PERFECT FOR SYSTEM 8 WHEN NOT WANTING TO USE M6 RIVET NUTS (PG 43).

CODE	THREAD DIRECTION AND SIZE
SSW045-6	RIGHT M6
SSW046-6	LEFT M6

## M6 THREADED INSERT FOR TIMBER



- 304 STAINLESS STEEL
- OVERALL LENGTH 30mm.

CODE	THREAD DIRECTION AND SIZE
SSW047-6	RIGHT M6
SSW048-6	LEFT M6

## DOME HEAD TERMINAL



- 316 STAINLESS STEEL
- OVERALL LENGTH 30mm.
- YOU NEED A HYDRAULIC SWAGER (PG 46) TO SECURE WIRE TO THE END OF THIS FITTING

CODE	WIRE DIAMETER
SSW071-6	3.2mm

## HEX HEAD TENSIONER



- 316 STAINLESS STEEL
- OVERALL LENGTH 30mm.

CODE	THREAD SIZE
SSW072-6	M6

# WIRE BALUSTRADE FITTINGS



## RAPID-LOCK RELEASE KEY

- 316 STAINLESS STEEL

### CODE

SSW074-6



## RAPID-LOCK TERMINAL

- 316 STAINLESS STEEL
- OVERALL LENGTH 70mm. THREAD LENGTH 35mm (M6)
- THE WIRE IS HELD IN PLACE BY SPRING LOADED JAWS. TO RELEASE THE WIRE YOU WILL NEED THE RELEASE KEY (SEE ABOVE)

### CODE

SSW076-6

### WIRE DIAMETER

3.2mm



## ANGLE BRACKET

- 316 STAINLESS STEEL
- LENGTH OF LONG SIDE IS 65mm. THE SHORT SIDE IS 50mm
- SLOT IS LARGE ENOUGH TO TAKE AN M6 THREAD

### CODE

SSW093-6



## SWAGELESS FORK BOTTLE SCREW

- 316 STAINLESS STEEL
- MINIMUM LENGTH 165mm. MAXIMUM LENGTH 235mm.
- NO SWAGER REQUIRED, JUST AN ADJUSTABLE SPANNER IS ALL THAT IS NEEDED TO FASTEN THE WIRE TO THE FITTING

### CODE

SSW075-6

### WIRE DIAMETER

3.2mm



## SWAGELESS FORK TERMINAL

- 316 STAINLESS STEEL
- OVERALL LENGTH 80mm
- NO SWAGER REQUIRED, JUST AN ADJUSTABLE SPANNER IS ALL THAT IS NEEDED TO FASTEN THE WIRE TO THE FITTING

### CODE

SSW078-6

### WIRE DIAMETER

3.2mm



# WIRE BALUSTRADE FITTINGS

43

STAINLESS STEEL BALUSTRADE COMPONENTS



## FLIP TOGGLE

- 304 STAINLESS STEEL
- WORKS IN CONJUNCTION WITH THE SWAGE TERMINAL (PG 44)

CODE	WIRE DIAMETER
SSW073-6	3.2mm



## 37° COLLARS (ANGLED STAIR BALUSTRADE)

- SMALL COLLARS GO WITH DOME HEAD TERMINAL (PG 41)
- LARGE COLLARS GO WITH HEX HEAD TENSIONER (PG 41)

CODE	SIZE	FIXES TO
SSW085-6	SMALL	FLAT SURFACE
SSW086-6	LARGE	FLAT SURFACE
SSW087-6	SMALL	ROUND SURFACE
SSW088-6	LARGE	ROUND SURFACE



## GROMMETS

- UV RESISTANT PVC
- FOR DRILL SIZE 11/32" (8.7mm)

CODE	COLOUR
SSW062-BK	BLACK
SSW062-GR	GREY



## M6 RIVET NUT

- 304 STAINLESS STEEL
- WORKS WITH A WALL THICKNESS FROM 0.7mm TO 4.0mm
- USE THE RIVET NUT INSERTER (PG 46) TO FIX TO POST

CODE	THREAD DIRECTION AND SIZE
IF127X	RIGHT M6
IF138X	LEFT M6



## M8 RIVET NUT

- 304 STAINLESS STEEL
- WORKS WITH A WALL THICKNESS FROM 0.5mm TO 3.0mm
- USE THE RIVET NUT INSERTER (PG 46) TO FIX TO POST

CODE	THREAD DIRECTION AND SIZE
SSW064-6	RIGHT M8



# WIRE BALUSTRADE FITTINGS



## M8 THREADED INSERT FOR TIMBER

- 304 STAINLESS STEEL
- OVERALL LENGTH 32mm.

### CODE

SSW063-6

### WIRE DIAMETER

3.2mm



## SWAGE TERMINAL

- 316 STAINLESS STEEL
- OVERALL LENGTH 25mm
- YOU NEED A HEX HAND SWAGER (PG 46) TO SECURE WIRE TO THE END OF THIS FITTING (IT WILL ALSO WORK WITH A HYDRUALIC SWAGER)

### CODE

SSW065-6

### WIRE DIAMETER

3.2mm



## M8 TENSION ROD

- 304 STAINLESS STEEL
- OVERALL LENGTH 35mm. THREAD SIZE IS M8.

### CODE

SSW066-6

### WIRE DIAMETER

3.2mm



## M8 FINISHING CAP

- 316 STAINLESS STEEL
- OVERALL LENGTH 25mm.
- FITS OVER THE M8 TENSION ROD (ABOVE).

### CODE

SSW067-6

### WIRE DIAMETER

3.2mm



## M8 STOP BOLT

- 316 STAINLESS STEEL
- OVERALL LENGTH 22mm.

### CODE

SSW068-6

### WIRE DIAMETER

3.2mm



# WIRE BALUSTRADE FITTINGS

45

STAINLESS STEEL BALUSTRADE COMPONENTS



## GREEN WALL POST

- 316 STAINLESS STEEL
- OVERALL LENGTH 100mm
- M8 INTERNAL THREAD

### CODE

SSW089-6



## M8 LAG SCREW FOR GREEN WALL POST

- 316 STAINLESS STEEL
- USED TO SECURE THE GREEN WALL POST (ABOVE) TO A BRICK (WITH PLUG) OR TIMBER SURFACE.

### CODE

SSW090-6

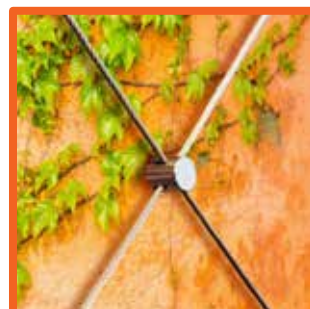


## CROSS WIRE CONNECTOR

- 316 STAINLESS STEEL
- SUITS 3.2mm WIRE CABLE

### CODE

SSW091-6



## PLASTIC END CAP FOR 3.2mm WIRE

- FITS ON THE END OF 3.2mm WIRE CABLE

### CODE

SSW092-BK

### COLOUR

BLACK



## SPANNER TO FASTEN GREEN WALL POST

- HANDY TOOL FOR FASTENING THE GREEN WALL POST

### CODE

IF137X



# WIRE BALUSTRADE TOOLS



IF119X

## HYDRAULIC SWAGERS

- USED TO SWAGE FITTINGS THAT TAKE 3.2 & 4mm WIRE

### CODE

### DESCRIPTION (OUTPUT)

IF119X

MINI (MAX 5 TONNE OUTPUT)

IF120X

PRO (MAX 8 TONNE OUTPUT)

IF120X



## HAND SWAGER WITH CUTTER

- USED TO SWAGE FERRULE ON PAGE 40
- HAS A BUILT IN CUTTER FOR CUTTING 3.2mm WIRE

### CODE

IF134X



## HEX HAND SWAGER

- USED TO SECURE THE SWAGE TERMINAL ON PAGE 44 TO 3.2mm WIRE

### CODE

IF135X



## RIVET NUT INSERTER

- SUPPLIED WITH RIGHT HAND THREAD MANDRELS IN M4, M5, M8, M8 AND M10
- NO LEFT HAND MANDRELS COME WITH THIS TOOL, BUT THEY CAN BE PURCHASED SEPARATELY (SEE BELOW)

### CODE

IF124X



## RIVET NUT MANDRELS

- SUITS THE RIVET NUT INSERTER
- THE LEFT HAND THREAD MANDREL DOES NOT COME WITH THE RIVET NUT INSERTER TOOL, SO IF USING SYSTEM 8 (PG 39) IT WILL NEED TO BE ORDERED AS WELL AS THE TOOL.

### CODE

### THREAD DIRECTION AND SIZE

IF112X

RIGHT M6

IF113X

LEFT M6



# WIRE BALUSTRADE TOOLS

47

STAINLESS STEEL BALUSTRADE COMPONENTS



## WIRE CABLE ROPE CUTTER

- CUTS WIRE UP TO 4mm THICK

### CODE

IF122X



## COACH SCREW DRIVE BIT

- USED FOR DRIVING COACH SCREWS ON PAGE 40 INTO TIMBER POSTS

### CODE

IF114X



## WIRE CABLE TENSION GAUGE

- MAKE SURE YOUR WIRE BALUSTRADE IS TENSIONED TO THE NECESSARY LEVEL TO MEET AUSTRALIAN STANDARDS

### CODE

IF125X



## SPANNER FOR WIRE CABLE FITTINGS

- THIS HANDY SPANNER MAKES EASY WORK OF INSTALLING AND TENSIONING MANY OF THE WIRE BALUSTRADE FITTINGS

### CODE

IF133X



## PEEK STAINLESS STEEL POLISH

- KEEP YOUR STAINLESS WIRE, TUBE AND FITTINGS LOOKING GOOD

### CODE

IF115X



## TUBE



## ROUND STAINLESS TUBE

- 1.6mm WALL THICKNESS

CODE	Ø	LENGTH	FINISH	GRADE
SST001-M6-M	50.8mm	5.8m	MIRROR	316
SST001-S4-M	50.8mm	6.0m	SATIN	304
SST001-S6-M	50.8mm	6.0m	SATIN	316
SST004-M6-M	38.1mm	5.8m	MIRROR	316
SST004-S6-M	38.1mm	6.0m	SATIN	316



## SQUARE STAINLESS TUBE

- 1.5mm WALL THICKNESS

CODE	SIZE	LENGTH	FINISH	GRADE
SST100-M6-M	50.8 x 50.8mm	6.0m	MIRROR	316
SST100-S6-M	50.8 x 50.8mm	6.0m	SATIN	316



## RECTANGLE STAINLESS TUBE

- 1.5mm WALL THICKNESS

CODE	SIZE	LENGTH	FINISH	GRADE
SST200-M6-M	50 x 25mm	5.8m	MIRROR	316
SST200-S6-M	50 x 25mm	6.0m	SATIN	316



## ROUND STAINLESS SINGLE SLOT TUBE

- 1.5mm WALL THICKNESS
- SLOT SIZE IS 15x15mm

CODE	Ø	LENGTH	FINISH	GRADE
SST005-M6-M	50.8mm	5.8m	MIRROR	316



## ROUND STAINLESS DOUBLE SLOT TUBE

- 1.5mm WALL THICKNESS
- SLOT SIZE IS 15x15mm

CODE	Ø	LENGTH	FINISH	GRADE
SST006-M6-M	50.8mm	5.8m	MIRROR	316





# TUBE & ROUND TUBE FITTINGS



## RECTANGLE STAINLESS SINGLE SLOT TUBE

- 1.2mm WALL THICKNESS
- SLOT SIZE IS 14x14

CODE	SIZE	LENGTH	FINISH	GRADE
SST203-M6-M	25 x 21mm	5.8m	MIRROR	316



## RUBBER CHANNELS

- FIXES INTO THE SLOT OF STAINLESS TUBE TO STOP THE GLASS FROM TOUCHING THE STAINLESS STEEL.

CODE	SIZE	FITS TUBE
SST009	15 x 15mm	SST005-M6-M & SST006-M6-M
SST010	14 x 14mm	SST203-M6-M



## 90° RADIUSED BEND

- 316 STAINLESS STEEL

CODE	FINISH	SUITS TUBE Ø
SSF029-M6	MIRROR	50.8mm
SSF029-S6	SATIN	50.8mm
SSF060-M6	MIRROR	38.1mm
SSF060-S6	SATIN	38.1mm



## 90° ACUTE BEND

- 316 STAINLESS STEEL

CODE	FINISH	SUITS TUBE Ø
SSF001-M6	MIRROR	50.8mm
SSF001-S6	SATIN	50.8mm
SSF061-M6	MIRROR	38.1mm
SSF061-S6	SATIN	38.1mm



## ADJUSTABLE ANGLE BEND

- 316 STAINLESS STEEL

CODE	FINISH	SUITS TUBE Ø
SSF002-M6	MIRROR	50.8mm
SSF002-S6	SATIN	50.8mm
SSF062-M6	MIRROR	38.1mm
SSF062-S6	SATIN	38.1mm

# ROUND TUBE FITTINGS



## STRAIGHT "T"

- 316 STAINLESS STEEL

CODE	FINISH	SUITS TUBE Ø
SSF003-M6	MIRROR	50.8mm
SSF003-S6	SATIN	50.8mm
SSF063-M6	MIRROR	38.1mm
SSF063-S6	SATIN	38.1mm



## 90° CORNER "T"

- 316 STAINLESS STEEL

CODE	FINISH	SUITS TUBE Ø
SSF004-M6	MIRROR	50.8mm
SSF004-S6	SATIN	50.8mm
SSF064-M6	MIRROR	38.1mm
SSF064-S6	SATIN	38.1mm



## 35° BEND

- 316 STAINLESS STEEL

CODE	FINISH	SUITS TUBE Ø
SSF035-M6	MIRROR	50.8mm
SSF035-S6	SATIN	50.8mm
SSF082-M6	MIRROR	38.1mm
SSF082-S6	SATIN	38.1mm



## RAIL CONVERTER

- 316 STAINLESS STEEL

CODE	FINISH	SUITS TUBE Ø
SSF007-M6	MIRROR	50.8mm
SSF007-S6	SATIN	50.8mm
SSF066-M6	MIRROR	38.1mm
SSF066-S6	SATIN	38.1mm



## PERPENDICULAR JOINER

- 316 STAINLESS STEEL

CODE	FINISH	SUITS TUBE Ø
SSF025-M6	MIRROR	50.8mm



# ROUND TUBE FITTINGS



## 90° TERMINATING BEND

- 316 STAINLESS STEEL

CODE	FINISH	SUITS TUBE Ø
SSF037-M6	MIRROR	50.8mm



## ROUND RAIL STRAIGHT SUPPORT

- 316 STAINLESS STEEL
- SPECIFY WHETHER CURVED CRADLE SUITS 50.8Ø OR 38.1Ø

CODE	FINISH	SUITS TUBE Ø
SSF020-M6	MIRROR	50.8mm
SSF020-S6	SATIN	50.8mm
SSF076-M6	MIRROR	38.1mm
SSF076-S6	SATIN	38.1mm



## FLAT RAIL STRAIGHT SUPPORT

- 316 STAINLESS STEEL

CODE	FINISH	SUITS TUBE Ø
SSF021-M6	MIRROR	50.8mm
SSF021-S6	SATIN	50.8mm
SSF077-M6	MIRROR	38.1mm
SSF077-S6	SATIN	38.1mm



## ROUND RAIL ADJUSTABLE SUPPORT

- 316 STAINLESS STEEL
- SPECIFY WHETHER CURVED CRADLE SUITS 50.8Ø OR 38.1Ø

CODE	FINISH	SUITS TUBE Ø
SSF022-M6	MIRROR	50.8mm
SSF022-S6	SATIN	50.8mm
SSF078-M6	MIRROR	38.1mm
SSF078-S6	SATIN	38.1mm



## FLAT RAIL ADJUSTABLE SUPPORT

- 316 STAINLESS STEEL

CODE	FINISH	SUITS TUBE Ø
SSF023-M6	MIRROR	50.8mm
SSF023-S6	SATIN	50.8mm
SSF079-M6	MIRROR	38.1mm
SSF079-S6	SATIN	38.1mm

# ROUND TUBE FITTINGS



## RAIL TO RAIL JOINER

- 316 STAINLESS STEEL

CODE	FINISH	SUITS TUBE Ø
SSF024-M6	MIRROR	50.8mm
SSF073-M6	MIRROR	38.1mm



## 180° BEND

- 316 STAINLESS STEEL
- THE BEND IS OPEN ON BOTH ENDS

CODE	FINISH	SUITS TUBE Ø
SSF026-M6	MIRROR	50.8mm
SSF026-S6	SATIN	50.8mm
SSF081-M6	MIRROR	38.1mm
SSF081-S6	SATIN	38.1mm



## RADIUSED END CAP

- 316 STAINLESS STEEL

CODE	FINISH	SUITS TUBE Ø
SSF009-M6	MIRROR	50.8mm
SSF009-S6	SATIN	50.8mm
SSF070-M6	MIRROR	38.1mm
SSF070-S6	SATIN	38.1mm



## HALF BALL END CAP

- 316 STAINLESS STEEL

CODE	FINISH	SUITS TUBE Ø
SSF030-M6	MIRROR	50.8mm
SSF030-S6	SATIN	50.8mm
SSF071-M6	MIRROR	38.1mm
SSF071-S6	SATIN	38.1mm



## FLAT END CAP

- 316 STAINLESS STEEL

CODE	FINISH	SUITS TUBE Ø
SSF031-M6	MIRROR	50.8mm
SSF031-S6	SATIN	50.8mm
SSF072-M6	MIRROR	38.1mm
SSF072-S6	SATIN	38.1mm



# ROUND TUBE FITTINGS

53

STAINLESS STEEL BALUSTRADE COMPONENTS



## BASE PLATE

- 304 STAINLESS STEEL
- NEEDS TO BE WELDED TO THE TUBE

CODE	SUITS TUBE Ø
SSF010-6	50.8mm
SSF067-6	38.1mm



## HEAVY DUTY BASE PLATE

- 304 STAINLESS STEEL
- NEEDS TO BE WELDED TO THE TUBE

CODE	SUITS TUBE Ø
SSF028-6	50.8mm



## ROUND BASE PLATE

- 316 STAINLESS STEEL
- THE DOMED COVER ON PG 54 DOES NOT WORK WITH THIS

CODE	FINISH	SUITS TUBE Ø
SSF036-M6	MIRROR	50.8mm
SSF036-S6	SATIN	50.8mm
SSF083-M6	MIRROR	38.1mm
SSF083-S6	SATIN	38.1mm



## INTERNAL BASE PLATE

- 316 STAINLESS STEEL
- SLIDES UP INSIDE THE TUBE
- WORKS WITH T-REX GLUE (PG 63). NO WELDING REQUIRED

CODE	FINISH	SUITS TUBE Ø
SSF013-M6	MIRROR	50.8mm
SSF068-M6	MIRROR	38.1mm



## ADJUSTABLE INTERNAL BASE PLATE

- 316 STAINLESS STEEL
- SLIDES UP INSIDE THE TUBE.
- WORKS WITH T-REX GLUE (PG 63). NO WELDING REQUIRED

CODE	FINISH	SUITS TUBE Ø
SSF032-M6	MIRROR	50.8mm



# ROUND TUBE FITTINGS



## OBLONG BASE PLATE

- 316 STAINLESS STEEL

CODE	FINISH	SUITS TUBE Ø
SSF012-M6	MIRROR	50.8mm
SSF012-S6	SATIN	50.8mm
SSF065-M6	MIRROR	38.1mm
SSF065-S6	SATIN	38.1mm



## HANDRAIL WALL FLANGE

- 316 STAINLESS STEEL

CODE	FINISH	SUITS TUBE Ø
SSF014-M6	MIRROR	50.8mm
SSF014-S6	SATIN	50.8mm
SSF074-M6	MIRROR	38.1mm



## DOMED COVER

- 316 STAINLESS STEEL
- FIT OVER ALL OF THE BASE PLATES ON PG 53 EXCEPT THE ROUND BASE PLATE (SSF036 AND SSF083)

CODE	FINISH	SUITS TUBE Ø
SSF011-M6	MIRROR	50.8mm
SSF011-S6	SATIN	50.8mm
SSF069-M6	MIRROR	38.1mm
SSF069-S6	SATIN	38.1mm



## SIDE MOUNT WALL BRACKET

- 316 STAINLESS STEEL

CODE	FINISH	SUITS TUBE Ø
SSF034-M6	MIRROR	50.8mm
SSF034-S6	SATIN	50.8mm
SSF084-M6	MIRROR	38.1mm
SSF084-S6	SATIN	38.1mm

The majority of our stainless steel products come in either 316 (marine) or 304 grades. We recommend using 316 grade for exterior use; and 304 grade for internal use. If your property is on the coast, you may want to consider using 316 grade for interior use also.

Most of our stainless products are available in both satin and mirror finishes. Satin finish, also known as a brushed finish, is a flatter/duller finish than mirror. Mirror finish, also known as polished stainless, is a reflective/bright finish. Generally speaking, mirror products offer better corrosion resistance than satin, and are therefore better suited for exterior and coastal projects.



# SLOTTED & SQUARE TUBE FITTINGS



## END CAP FOR SINGLE AND DOUBLE SLOTTED TUBE

- 316 STAINLESS STEEL

CODE	FINISH	SUITS TUBE Ø
SSF092-M6	MIRROR	50.8mm SINGLE & DOUBLE SLOT



## RAIL TO RAIL JOINER FOR SLOTTED TUBE

- 316 STAINLESS STEEL

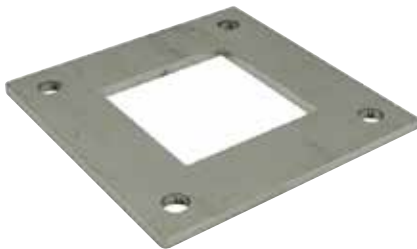
CODE	FINISH	SUITS TUBE Ø
SSF094-M6	MIRROR	50.8mm SINGLE SLOT



## FLAT END CAP

- 316 STAINLESS STEEL

CODE	FINISH	SUITS TUBE SIZE
SSF102-M6	MIRROR	50.8 x 50.8mm
SSF102-S6	SATIN	50.8 x 50.8mm



## BASE PLATE

- 304 STAINLESS STEEL
- NEEDS TO BE WELDED TO THE TUBE

CODE	SUITS TUBE SIZE
SSF105-6	50.8 x 50.8mm



## COVER PLATE

- 316 STAINLESS STEEL
- FITS OVER THE BASE PLATE ON PG 55 AND 56

CODE	FINISH	SUITS TUBE SIZE
SSF106-M6	MIRROR	50.8 x 50.8mm
SSF106-S6	SATIN	50.8 x 50.8mm



# SQUARE TUBE FITTINGS



## INTERNAL BASE PLATE

- 316 STAINLESS STEEL
- SLIDES UP INSIDE THE TUBE.
- WORKS WITH T-REX GLUE (PG 63). NO WELDING REQUIRED

CODE	FINISH	SUITS TUBE SIZE
SSF108-M6	MIRROR	50.8 x 50.8mm



## ROUND RAIL STRAIGHT SUPPORT

- 316 STAINLESS STEEL
- SPECIFY WHETHER CURVED CRADLE SUITS 50.8Ø OR 38.1Ø

CODE	FINISH	SUITS TUBE SIZE
SSF109-M6	MIRROR	50.8 x 50.8mm
SSF109-S6	SATIN	50.8 x 50.8mm



## FLAT RAIL STRAIGHT SUPPORT

- 316 STAINLESS STEEL

CODE	FINISH	SUITS TUBE SIZE
SSF110-M6	MIRROR	50.8 x 50.8mm
SSF110-S6	SATIN	50.8 x 50.8mm



## ADJUSTABLE ROUND RAIL SUPPORT

- 316 STAINLESS STEEL
- SPECIFY WHETHER CURVED CRADLE SUITS 50.8Ø OR 38.1Ø

CODE	FINISH	SUITS TUBE SIZE
SSF111-M6	MIRROR	50.8 x 50.8mm
SSF111-S6	SATIN	50.8 x 50.8mm



## ADJUSTABLE FLAT RAIL SUPPORT

- 316 STAINLESS STEEL

CODE	FINISH	SUITS TUBE SIZE
SSF112-M6	MIRROR	50.8 x 50.8mm
SSF112-S6	SATIN	50.8 x 50.8mm





# SQUARE & RECTANGLE TUBE FITTINGS



## RAIL TO RAIL JOINER

· 316 STAINLESS STEEL

CODE	FINISH	SUITS TUBE SIZE
SSF113-M6	MIRROR	50.8 x 50.8mm



## RAIL CONVERTER

· 316 STAINLESS STEEL

CODE	FINISH	SUITS TUBE SIZE
SSF117-M6	MIRROR	50.8 x 50.8mm
SSF117-S6	SATIN	50.8 x 50.8mm



## BASE PLATE

· 316 STAINLESS STEEL

CODE	FINISH	SUITS TUBE SIZE
SSF200-M6	MIRROR	50 x 25mm



## RAIL CONVERTER

· 316 STAINLESS STEEL

CODE	FINISH	SUITS TUBE SIZE
SSF201-M6	MIRROR	50 x 25mm



## 90° BEND

· 316 STAINLESS STEEL

CODE	FINISH	SUITS TUBE SIZE
SSF202-M6	MIRROR	50 x 25mm
SSF202-S6	SATIN	50 x 25mm



# RECTANGLE TUBE FITTINGS



## END CAP

- 316 STAINLESS STEEL

CODE	FINISH	SUITS TUBE SIZE
SSF203-M6	MIRROR	50 x 25mm
SSF203-S6	SATIN	50 x 25mm



## WALL FLANGE

- 316 STAINLESS STEEL

CODE	FINISH	SUITS TUBE SIZE
SSF204-M6	MIRROR	50 x 25mm
SSF204-S6	SATIN	50 x 25mm



## RAIL TO RAIL JOINER

- 316 STAINLESS STEEL

CODE	FINISH	SUITS TUBE SIZE
SSF205-M6	MIRROR	50 x 25mm



## ADJUSTABLE ANGLE BEND

- 316 STAINLESS STEEL

CODE	FINISH	SUITS TUBE SIZE
SSF207-M6	MIRROR	50 x 25mm



## SWIVEL JOINER

- 316 STAINLESS STEEL

CODE	FINISH	SUITS TUBE SIZE
SSF208-M6	MIRROR	50 x 25mm

# SLOTTED TUBE FITTINGS



## 90° BEND

- 316 STAINLESS STEEL

CODE	FINISH	SUITS TUBE SIZE
SSF260-M6	MIRROR	25 x 21mm Single Slot



## END CAP

- 316 STAINLESS STEEL

CODE	FINISH	SUITS TUBE SIZE
SSF261-M6	MIRROR	25 x 21mm Single Slot



## WALL FLANGE

- 316 STAINLESS STEEL

CODE	FINISH	SUITS TUBE SIZE
SSF262-M6	MIRROR	25 x 21mm Single Slot



## RAIL TO RAIL JOINER

- 316 STAINLESS STEEL

CODE	FINISH	SUITS TUBE SIZE
SSF263-M6	MIRROR	25 x 21mm Single Slot



## ADJUSTABLE ANGLE BEND

- 316 STAINLESS STEEL

CODE	FINISH	SUITS TUBE SIZE
SSF264-M6	MIRROR	25 x 21mm Single Slot



### SWIVEL JOINER

- 316 STAINLESS STEEL

CODE	FINISH	SUITS TUBE SIZE
SSF265-M6	MIRROR	25 x 21mm Single Slot



### MEDIUM D GLASS CLAMP with FLAT BACK

- 316 STAINLESS STEEL
- FITS TO A FLAT SURFACE

CODE	FINISH	SUITS GLASS SIZE
SSG001-M6	MIRROR	10 and 12mm
SSG001-S6	SATIN	10 and 12mm



### MEDIUM D GLASS CLAMP with ROUND BACK

- 316 STAINLESS STEEL
- FITS TO A 50.8Ø ROUND SURFACE

CODE	FINISH	SUITS GLASS SIZE
SSG002-M6	MIRROR	10 and 12mm
SSG002-S6	SATIN	10 and 12mm



### SMALL SQUARE GLASS CLAMP with FLAT BACK

- 316 STAINLESS STEEL
- FITS TO A FLAT SURFACE

CODE	FINISH	SUITS GLASS SIZE
SSG003-M6	MIRROR	8 and 10mm
SSG003-S6	SATIN	8 and 10mm



### SMALL SQUARE GLASS CLAMP with ROUND BACK

- 316 STAINLESS STEEL
- FITS TO A 50.8Ø ROUND SURFACE

CODE	FINISH	SUITS GLASS SIZE
SSG004-M6	MIRROR	8 and 10mm
SSG004-S6	SATIN	8 and 10mm



# GLASS CLAMPS



## LARGE SQUARE GLASS CLAMP with FLAT BACK

- 316 STAINLESS STEEL
- FITS TO A FLAT SURFACE
- SUPPLIED WITH A REMOVEABLE BASE PLATE

CODE	FINISH	SUITS GLASS SIZE
SSG005-M6	MIRROR	10 and 12mm
SSG005-S6	SATIN	10 and 12mm



## LARGE SQUARE GLASS CLAMP with ROUND BACK

- 316 STAINLESS STEEL
- FITS TO A 50.8Ø ROUND SURFACE
- SUPPLIED WITH A REMOVEABLE BASE PLATE

CODE	FINISH	SUITS GLASS SIZE
SSG006-M6	MIRROR	10 and 12mm
SSG006-S6	SATIN	10 and 12mm



## LONG 180° GLASS TO GLASS CONNECTOR

- 316 STAINLESS STEEL

CODE	FINISH	SUITS GLASS SIZE
SSG020-M6	MIRROR	12mm



## SHORT 180° GLASS TO GLASS CONNECTOR

- 316 STAINLESS STEEL

CODE	FINISH	SUITS GLASS SIZE
SSG021-M6	MIRROR	12mm



## SWIVEL GLASS TO GLASS CONNECTOR

- 316 STAINLESS STEEL

CODE	FINISH	SUITS GLASS SIZE
SSG022-M6	MIRROR	12mm



# GLASS CLAMPS & STANDOFFS



## GLASS TO WALL CONNECTOR

- 316 STAINLESS STEEL

CODE	FINISH	SUITS GLASS SIZE
SSG023-M6	MIRROR	12mm



## 50mm Ø ADJUSTABLE GLASS STANDOFF

- HOLE SIZE IN GLASS SHOULD BE AT LEAST 20mm
- THE ADJUSTABLE BACK ALLOWS THE GLASS TO BE SPACED BETWEEN 20 AND 43mm OFF THE FIXING SURFACE
- M12 THREAD

CODE	FINISH	GRADE
SSG100-S6	SATIN	316



## 50mm Ø GLASS STANDOFF

- HOLE SIZE IN GLASS SHOULD BE AT LEAST 20mm
- M12 THREAD

CODE	FINISH	GRADE	SPACER LENGTH
SSG101-S6	SATIN	316	30mm
SSG103-S6	SATIN	316	50mm



## 38mm Ø GLASS STANDOFF

- HOLE SIZE IN GLASS SHOULD BE AT LEAST 20mm
- M12 THREAD

CODE	FINISH	GRADE	SPACER LENGTH
SSG105-S6	SATIN	316	25mm
SSG107-S6	SATIN	316	45mm



## 120mm STANDOFF THREAD ROD

- M12 THREAD
- USED FOR SECURING STANDOFFS TO A NON-TIMBER SURFACE

CODE	GRADE
SSG154-6	304





## LAG SCREW FOR GLASS STANDOFFS

- M12 THREAD
- USED FOR SECURING STANDOFFS TO A TIMBER SURFACE
- THE LONG VERSION IS BETTER TO THE LONGER STANDOFFS

CODE	GRADE	OVERALL LENGTH	LENGTH OF M12 THREAD
SSG157-6	304	160mm	60mm
SSG158-6	304	115mm	55mm



## SPANNER TO TIGHTEN GLASS STANDOFFS

- FOR USE ON BOTH 38 AND 50mm Ø STANDOFFS

### CODE

IF129X



## SOCKET CAP SCREW FOR M6 RIVET NUT

- M6 THREAD
- USED IN CONJUNCTION WITH THE M6 RIVET NUT (PG 43) TO FASTEN CLASS CLAMPS TO METAL POSTS

CODE	GRADE	LENGTH OF M6 THREAD
IF128X	304	25mm



## T-REX GLUE FOR STAINLESS FITTINGS

- USED TO FASTEN THE MAJORITY OF THE STAINLESS STEEL FITTINGS TO TUBE

### CODE                  SIZE

IF123X                  290ml TUBE



## NON-WOVEN WEB PAD

- SUITABLE TO COVERT STAINLESS STEEL FITTINGS FROM A MIRROR FINISH BACK TO A SATIN FINISH

### CODE                  SIZE

IF118X                  250 x 115mm



# READY-TO-USE POSTS



SSP001

SSP011

INTERMEDIATE  
POST

SSP003

END  
POST

SSP014

CORNER  
POST

SSP015



SSP091

## STAINLESS STEEL POSTS - FLAT (HORIZONTAL) BALUSTRADE

- ROUND POSTS ARE 50.8mm IN DIAMETER AND THE HEIGHT IS 960mm (AFTER THE SADDLE IS ADDED).
- THE BASE PLATE ON THE ROUND POSTS ARE 114mm Ø AND IS WELDED TO THE BOTTOM OF THE POST. A COVER PLATE IS INCLUDED.
- ALL POSTS ARE 316 STAINLESS STEEL, EXCEPT FOR THE BLACK VERSION OF THE SSP091, WHICH IS ALUMINIUM.

CODE	FINISH	DESCRIPTION
SSP001-M6	MIRROR	PLAIN POST (1.6mm WALL THICKNESS).
SSP001-S6	SATIN	
SSP011-M6	MIRROR	PLAIN POST (3.0mm WALL THICKNESS).
SSP011-S6	SATIN	
SSP003-M6	MIRROR	INTERMEDIATE POST (1.6mm WALL THICKNESS) WITH 2 SETS OF 11 x 4mm HOLES SPACED 80mm APART. ALLOWS FOR THE WIRE CABLE TO GO THROUGH THE POST.
SSP003-S6	SATIN	
SSP014-M6	MIRROR	END POST (3.0mm WALL THICKNESS) WITH 1 SET OF 11 x M6 RIGHT HAND RIVET NUTS SPACED 80mm APART. LEFT HAND THREAD RIVET NUTS CAN BE SUPPLIED UPON REQUEST.
SSP014-S6	SATIN	
SSP015-M6	MIRROR	CORNER POST (3.0mm WALL THICKNESS) WITH 2 SETS OF 11 x M6 RIGHT HAND RIVET NUTS SPACED 80mm APART. LEFT HAND THREAD RIVET NUTS CAN BE SUPPLIED UPON REQUEST.
SSP015-S6	SATIN	
SSP091-M6	MIRROR	INTERMEDIATE POST WITH OF 11 x 8mm HOLES SPACED 80mm APART.
SSP091-S6	SATIN	
SSP091XMB	BLACK	





# READY-TO-USE POSTS

65

STAINLESS STEEL BALUSTRADE COMPONENTS



## ROUND SADDLE FOR FLAT BALUSTRADE POSTS

- 316 STAINLESS STEEL
- ROUND SADDLE SUITS HANDRAIL BETWEEN 43Ø AND 60Ø

CODE	FINISH	GRADE
SSP016-M6	MIRROR	316
SSP016-S6	SATIN	316



## FLAT SADDLE FOR FLAT BALUSTRADE POSTS

- 316 STAINLESS STEEL
- SADDLE IS 38mm WIDE AND 80mm LONG

CODE	FINISH	GRADE
SSP017-M6	MIRROR	316
SSP017-S6	SATIN	316



## ROUND CORNER SADDLE FOR FLAT BALUSTRADE POSTS

- 316 STAINLESS STEEL
- SUITS 90° ACUTE BEND (SSF001) ON PG 49

CODE	FINISH	GRADE
SSP018-M6	MIRROR	316
SSP018-S6	SATIN	316



## FLAT CORNER SADDLE FOR FLAT BALUSTRADE POSTS

- 316 STAINLESS STEEL
- SADDLE IS 68mm WIDE AND 68mm LONG

CODE	FINISH	GRADE
SSP019-M6	MIRROR	316
SSP019-S6	SATIN	316

It is a common misconception that stainless steel is maintenance free. 316 grade stainless in a mirror finish will have less issues than 304 grade in a satin finish, but if not maintained properly, both will eventually have problems in their appearance.

There is plenty of information that can be found on the internet for correctly maintaining stainless steel so that it continues to look as good as the day it was installed.

# READY-TO-USE POSTS



SSP021

SSP031



SSP036



SSP037



All posts have a heavy duty base plate welded to the bottom of them. The base plate is 114mm in diameter and comes with 3 grub screws that allows for easily levelling of the post during installation. A domed cover is also supplied.

## STAINLESS STEEL POSTS - ANGLED (STAIR) BALUSTRADE

- POSTS ARE 50.8mm Ø.
- THE HEIGHT OF THE POST IS 960mm (AFTER THE SADDLE IS ADDED).
- THE BASE PLATE IS 114mm Ø AND IS WELDED TO THE BOTTOM OF THE POST. A COVER PLATE IS INCLUDED.
- ALL POSTS ARE 316 STAINLESS STEEL.
- ROUND SADDLE SUITS HANDRAIL BETWEEN 43Ø AND 60Ø.
- FLAT SADDLE IS 38mm WIDE AND 80mm LONG.

CODE	FINISH	DESCRIPTION
SSP021-M6	MIRROR	PLAIN POST (1.6mm WALL THICKNESS)
SSP021-S6	SATIN	PLAIN POST (1.6mm WALL THICKNESS)
SSP031-M6	MIRROR	PLAIN POST (3.0mm WALL THICKNESS)
SSP031-S6	SATIN	PLAIN POST (3.0mm WALL THICKNESS)
SSP036-M6	MIRROR	ROUND SADDLE FOR ANGLED BALUSTRADE POSTS
SSP036-S6	SATIN	ROUND SADDLE FOR ANGLED BALUSTRADE POSTS
SSP037-M6	MIRROR	FLAT SADDLE FOR ANGLED BALUSTRADE POSTS
SSP037-S6	SATIN	FLAT SADDLE FOR ANGLED BALUSTRADE POSTS





## GALVANISED PIPE

CODE	LENGTH	OUTSIDE Ø	NOMINAL BORE
GAT-A27	1m or 3m	27mm	20 NB
GAT-B34	1m or 3m	34mm	25 NB
GAT-C42	1m or 3m	42mm	32 NB
GAT-D48	1m or 3m	48mm	40 NB
GAT-E60	1m or 3m	60mm	50 NB



## SHORT TEE

CODE	SUITS PIPE SIZE
GAF101-A27	27mm
GAF101-B34	34mm
GAF101-C42	42mm
GAF101-D48	48mm
GAF101-E60	60mm



## SHORT TEE

CODE	HORIZONTAL PIPE SIZE	VERTICAL PIPE SIZE
GAF101-B34/C42	34mm	42mm
GAF101-C42/B34	42mm	34mm
GAF101-C42/D48	42mm	48mm
GAF101-D48/B34	48mm	34mm
GAF101-D48/C42	48mm	42mm
GAF101-E60/D48	60mm	48mm



## LONG TEE

CODE	SUITS PIPE SIZE
GAF104-A27	27mm
GAF104-B34	34mm
GAF104-C42	42mm
GAF104-D48	48mm
GAF104-E60	60mm



## 3 CORNER CENTRE TUBE

CODE	SUITS PIPE SIZE
GAF116-A27	27mm
GAF116-B34	34mm
GAF116-C42	42mm
GAF116-D48	48mm
GAF116-E60	60mm



# GALVANISED FITTINGS



## RETROFIT FITTING

- QUICK WAY TO ADD RAILS TO EXISTING STRUCTURES.

CODE	SOCKETS	SUITS PIPE SIZE
GAF117X-D48	2	48mm
GAF117Y-D48	4	48mm



## 2 SOCKET CROSS MIDDLE

CODE	SUITS PIPE SIZE
GAF119-A27	27mm
GAF119-B34	34mm
GAF119-C42	42mm
GAF119-D48	48mm
GAF119-E60	60mm



## 2 SOCKET CROSS MIDDLE

CODE	HORIZONTAL PIPE SIZE	VERTICAL PIPE SIZE
GAF119-C42/D48	42mm	48mm



## 40° TO 70° ELBOW

- THE INSIDE OF THE FITTING HAS ENOUGH ROOM SUCH THAT THE ANGLE CAN BE SET BETWEEN 40 AND 70 DEGREES

CODE	SUITS PIPE SIZE
GAF123-B34	34mm
GAF123-C42	42mm
GAF123-D48	48mm



## 15° TO 60° ELBOW

- THE INSIDE OF THE FITTING HAS ENOUGH ROOM SUCH THAT THE ANGLE CAN BE SET BETWEEN 15 AND 60 DEGREES

CODE	SUITS PIPE SIZE
GAF124-B34	34mm
GAF124-C42	42mm
GAF124-D48	48mm





## 90° ELBOW

CODE	SUITS PIPE SIZE
GAF125-A27	27mm
GAF125-B34	34mm
GAF125-C42	42mm
GAF125-D48	48mm
GAF125-E60	60mm



## 90° ELBOW

CODE	HORIZONTAL PIPE SIZE	VERTICAL PIPE SIZE
GAF125-D48/C42	48mm	42mm



## ADJUSTABLE LONG TEE

- THE INSIDE OF THE FITTING HAS ENOUGH ROOM SUCH THAT THE ANGLE CAN BE SET BETWEEN 30 AND 45 DEGREES

CODE	SUITS PIPE SIZE
GAF127-B34	34mm
GAF127-C42	42mm
GAF127-D48	48mm



## CORNER 90°

CODE	SUITS PIPE SIZE
GAF128-A27	27mm
GAF128-B34	34mm
GAF128-C42	42mm
GAF128-D48	48mm
GAF128-E60	60mm



## ADJUSTABLE SHORT TEE

- THE INSIDE OF THE FITTING HAS ENOUGH ROOM SUCH THAT THE ANGLE CAN BE SET BETWEEN 30 AND 60 DEGREES

CODE	SUITS PIPE SIZE
GAF129-A27	27mm
GAF129-B34	34mm
GAF129-C42	42mm
GAF129-D48	48mm



# GALVANISED FITTINGS



## ADJUSTABLE CROSS

- THE INSIDE OF THE FITTING HAS ENOUGH ROOM SUCH THAT THE ANGLE CAN BE SET BETWEEN 30 AND 45 DEGREES

CODE	SUITS PIPE SIZE
GAF130-B34	34mm
GAF130-C42	42mm
GAF130-D48	48mm



## ROUND WALL FLANGE

CODE	SUITS PIPE SIZE
GAF131-A27	27mm
GAF131-B34	34mm
GAF131-C42	42mm
GAF131-D48	48mm
GAF131-E60	60mm



## RAILING BASE FLANGE

CODE	SUITS PIPE SIZE
GAF132-A27	27mm
GAF132-B34	34mm
GAF132-C42	42mm
GAF132-D48	48mm
GAF132-E60	60mm



## PLASTIC END CAP

CODE	SUITS PIPE SIZE
GAF133-A27	27mm
GAF133-B34	34mm
GAF133-C42	42mm
GAF133-D48	48mm
GAF133-E60	60mm



## INGROUND SOCKET

CODE	SUITS PIPE SIZE
GAF134-B34	34mm
GAF134-C42	42mm
GAF134-D48	48mm





## CLAMP ON T (OPEN)

CODE	SUITS PIPE SIZE
GAF135-A27	27mm
GAF135-B34	34mm
GAF135-C42	42mm
GAF135-D48	48mm
GAF135-E60	60mm



## SCREW ON CROSSOVER

CODE	SUITS PIPE SIZE
GAF135Y-D48	48mm



## CLAMP ON T (CLOSED)

CODE	SUITS PIPE SIZE
GAF136-C42	42mm
GAF136-D48	48mm



## CLAMP ON CROSSOVER

CODE	SUITS PIPE SIZE
GAF137-D48	48mm



## GATE HINGE EYE

CODE	SUITS PIPE SIZE
GAF138-A27	27mm
GAF138-B34	34mm
GAF138-C42	42mm
GAF138-D48	48mm



# GALVANISED FITTINGS



## GATE HINGE PIN

CODE	SUITS PIPE SIZE
GAF140-A27	27mm
GAF140-B34	34mm
GAF140-C42	42mm
GAF140-D48	48mm



## RAIL WALL BRACKET (ENCLOSED)

CODE	SUITS PIPE SIZE
GAF143-A27	27mm
GAF143-B34	34mm
GAF143-C42	42mm
GAF143-D48	48mm



## SIDE SUPPORT VERTICAL BASE

CODE	SUITS PIPE SIZE
GAF144-B34	34mm
GAF144-C42	42mm
GAF144-D48	48mm



## SIDE SUPPORT HORIZONTAL BASE

CODE	SUITS PIPE SIZE
GAF145-B34	34mm
GAF145-C42	42mm
GAF145-D48	48mm



## SIDE SUPPORT TRIANGLE BASE

CODE	SUITS PIPE SIZE
GAF146-B34	34mm
GAF146-C42	42mm
GAF146-D48	48mm







## INTERNAL SWIVEL TEE

CODE	SUITS PIPE SIZE
GAF147-B34	34mm
GAF147-C42	42mm
GAF147-D48	48mm



## SWIVEL SHORT TEE

· TO ACHIEVE WHAT IS IN THE PHOTO 2 PIECES ARE NEEDED

CODE	SUITS PIPE SIZE
GAF148-A27	27mm
GAF148-B34	34mm
GAF148-C42	42mm
GAF148-D48	48mm
GAF148-E60	60mm



## EXTERNAL SLEEVE JOINER

CODE	SUITS PIPE SIZE
GAF149-A27	27mm
GAF149-B34	34mm
GAF149-C42	42mm
GAF149-D48	48mm
GAF149-E60	60mm



## INTERNAL EXPANDING JOINT

CODE	SUITS PIPE SIZE
GAF150-B34	34mm
GAF150-C42	42mm
GAF150-D48	48mm



## SLOPING 0° TO 11° FLOOR FLANGE

· THE INSIDE OF THE FITTING HAS ENOUGH ROOM SUCH THAT THE ANGLE CAN BE SET BETWEEN 0 AND 11 DEGREES

CODE	SUITS PIPE SIZE
GAF152-B34	34mm
GAF152-C42	42mm
GAF152-D48	48mm



# GALVANISED FITTINGS



## SLOPING 0° TO 11° SHORT TEE

- THE INSIDE OF THE FITTING HAS ENOUGH ROOM SUCH THAT THE ANGLE CAN BE SET BETWEEN 0 AND 11 DEGREES

CODE	SUITS PIPE SIZE
GAF153-B34	34mm
GAF153-C42	42mm
GAF153-D48	48mm



## SLOPING 0° TO 11° ELBOW

- THE INSIDE OF THE FITTING HAS ENOUGH ROOM SUCH THAT THE ANGLE CAN BE SET BETWEEN 0 AND 11 DEGREES

CODE	SUITS PIPE SIZE
GAF154-B34	34mm
GAF154-C42	42mm
GAF154-D48	48mm



## SLOPING 0° TO 11° LONG TEE

- THE INSIDE OF THE FITTING HAS ENOUGH ROOM SUCH THAT THE ANGLE CAN BE SET BETWEEN 0 AND 11 DEGREES

CODE	SUITS PIPE SIZE
GAF155-B34	34mm
GAF155-C42	42mm
GAF155-D48	48mm



## SLOPING 0° TO 11° CROSS

- THE INSIDE OF THE FITTING HAS ENOUGH ROOM SUCH THAT THE ANGLE CAN BE SET BETWEEN 0 AND 11 DEGREES

CODE	SUITS PIPE SIZE
GAF156-B34	34mm
GAF156-C42	42mm
GAF156-D48	48mm



## 4 WAYS CENTRE CROSS

CODE	SUITS PIPE SIZE
GAF158-A27	27mm
GAF158-B34	34mm
GAF158-C42	42mm
GAF158-D48	48mm
GAF158-E60	60mm





## CLAMP-ON CROSSOVER

CODE	SUITS PIPE SIZE
GAF160-A27	27mm
GAF160-B34	34mm
GAF160-C42	42mm
GAF160-D48	48mm
GAF160-E60	60mm



## CROSSOVER

CODE	SUITS PIPE SIZE
GAF161-A27	27mm
GAF161-B34	34mm
GAF161-C42	42mm
GAF161-D48	48mm
GAF161-E60	60mm



## CROSSOVER

CODE	HORIZONTAL PIPE SIZE	VERTICAL PIPE SIZE
GAF161-B34/A27	34mm	27mm
GAF161-C42/B34	42mm	34mm
GAF161-D48/B34	48mm	34mm
GAF161-D48/C42	48mm	42mm
GAF161-E60/D48	60mm	48mm



## COMBINED T AND CROSSOVER

CODE	SUITS PIPE SIZE
GAF165-B34	34mm
GAF165-C42	42mm
GAF165-D48	48mm
GAF165-E60	60mm



## ADJUSTABLE KNUCKLE

CODE	SUITS PIPE SIZE
GAF166-B34	34mm
GAF166-C42	42mm
GAF166-D48	48mm
GAF166-E60	60mm



# GALVANISED FITTINGS



## DOUBLE SWIVEL CONNECTION

CODE	SUITS PIPE SIZE
GAF167-A27	27mm
GAF167-B34	34mm
GAF167-C42	42mm
GAF167-D48	48mm
GAF167-E60	60mm



## STRAIGHT CONNECTOR

CODE	SUITS PIPE SIZE
GAF167M-A27	27mm
GAF167M-B34	34mm
GAF167M-C42	42mm
GAF167M-D48	48mm
GAF167M-E60	60mm



## DOUBLE SWIVEL 90 CONNECTOR

CODE	SUITS PIPE SIZE
GAF168-A27	27mm
GAF168-B34	34mm
GAF168-C42	42mm
GAF168-D48	48mm
GAF168-E60	60mm



## 90° CONNECTOR

CODE	SUITS PIPE SIZE
GAF168M-A27	27mm
GAF168M-B34	34mm
GAF168M-C42	42mm
GAF168M-D48	48mm
GAF168M-E60	60mm



## ADJUSTABLE ANGLE WALL FIXING

CODE	SUITS PIPE SIZE
GAF169-A27	27mm
GAF169-B34	34mm
GAF169-C42	42mm
GAF169-D48	48mm
GAF169-E60	60mm

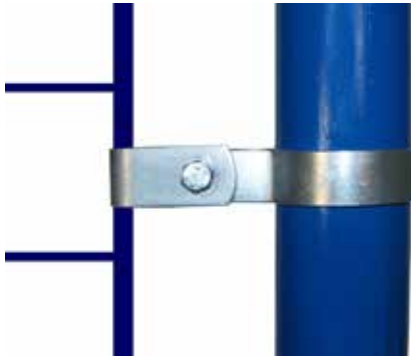




## FLAT WALL PLATE

### CODE

GAF169M



## SINGLE MESH PANEL CLIP

### CODE

### SUITS PIPE SIZE

GAF170-A27 27mm

GAF170-B34 34mm

GAF170-C42 42mm

GAF170-D48 48mm

GAF170-E60 60mm



## DOUBLE MESH PANEL CLIP

### CODE

### SUITS PIPE SIZE

GAF171-A27 27mm

GAF171-B34 34mm

GAF171-C42 42mm

GAF171-D48 48mm

GAF171-E60 60mm



## 90° OFFSET CONNECTOR

TO ACHIEVE WHAT IS IN THE PHOTO 2 PIECES ARE NEEDED

### CODE

### SUITS PIPE SIZE

GAF172M-C42 42mm

GAF172M-D48 48mm



## SINGLE SWIVEL COMBINATION

### CODE

### SUITS PIPE SIZE

GAF173-A27 27mm

GAF173-B34 34mm

GAF173-C42 42mm

GAF173-D48 48mm

GAF173-E60 60mm





### SINGLE SWIVEL FEMALE FITTING

CODE	SUITS PIPE SIZE
GAF173F-A27	27mm
GAF173F-B34	34mm
GAF173F-C42	42mm
GAF173F-D48	48mm
GAF173F-E60	60mm



### SINGLE SWIVEL MALE FITTING

CODE	SUITS PIPE SIZE
GAF173M-A27	27mm
GAF173M-B34	34mm
GAF173M-C42	42mm
GAF173M-D48	48mm
GAF173M-E60	60mm



### SINGLE SWIVEL TEE

CODE	SUITS PIPE SIZE
GAF174-D48	48mm



### SINGLE SWIVEL TEE (MALE)

CODE	SUITS PIPE SIZE
GAF174M-D48	48mm



### SINGLE SWIVEL ELBOW

CODE	SUITS PIPE SIZE
GAF175-D48	48mm





## SINGLE SWIVEL ELBOW (MALE)

CODE	SUITS PIPE SIZE
GAF175M-D48	48mm



## 3 WAY CENTRE CROSS

CODE	SUITS PIPE SIZE
GAF176-A27	27mm
GAF176-B34	34mm
GAF176-C42	42mm
GAF176-D48	48mm
GAF176-E60	60mm



## LOCKING RING

CODE	SUITS PIPE SIZE
GAF179-A27	27mm
GAF179-B34	34mm
GAF179-C42	42mm
GAF179-D48	48mm



## LOCKING RING WITH HOOK

CODE	SUITS PIPE SIZE
GAF182-A27	27mm
GAF182-B34	34mm
GAF182-C42	42mm
GAF182-D48	48mm



## EAVES FITTING 27°

CODE	SUITS PIPE SIZE
GAF185-D48	48mm



# GALVANISED FITTINGS



## RIDGE FITTING 27°

CODE	SUITS PIPE SIZE
GAF191-D48	48mm



## WEATHER SHIELD FOR FLANGES

CODE	SUITS PIPE SIZE
GAF192-B34	34mm
GAF192-C42	42mm
GAF192-D48	48mm



## SIGN CLAMP

CODE	SUITS PIPE SIZE
GAF197-D48	48mm



## DOUBLE LUGGED BRACKET

CODE	SUITS PIPE SIZE
GAF198-B34	34mm
GAF198-C42	42mm
GAF198-D48	48mm



## SINGLE LUGGED BRACKET

CODE	SUITS PIPE SIZE
GAF199-B34	34mm
GAF199-C42	42mm
GAF199-D48	48mm







## RAILING BASE FLANGE

CODE	SUITS PIPE SIZE
GAF232-D48	48mm



## FLOOR FLANGE WITH REAR FIX

CODE	SUITS PIPE SIZE
GAF242-C42	42mm
GAF242-D48	48mm



## HEAVY UPRIGHT SIDE SUPPORT

CODE	SUITS PIPE SIZE
GAF245-D48	48mm



## SIDE MOUNT UPRIGHT SUPPORT

CODE	SUITS PIPE SIZE
GAF246-B34	34mm
GAF246-C42	42mm
GAF246-D48	48mm



## SLOPING 30° TO 45° FLOOR FLANGE

- THE INSIDE OF THE FITTING HAS ENOUGH ROOM SUCH THAT THE ANGLE CAN BE SET BETWEEN 30 AND 45 DEGREES

CODE	SUITS PIPE SIZE
GAF251-B34	34mm
GAF251-C42	42mm
GAF251-D48	48mm



# GALVANISED FITTINGS



## SLOPING 11° TO 29° FLOOR FLANGE

- THE INSIDE OF THE FITTING HAS ENOUGH ROOM SUCH THAT THE ANGLE CAN BE SET BETWEEN 11 AND 29 DEGREES

**CODE**      **SUITS PIPE SIZE**

GAF252-D48      48mm



## SLOPING 11° TO 29° SHORT TEE

- THE INSIDE OF THE FITTING HAS ENOUGH ROOM SUCH THAT THE ANGLE CAN BE SET BETWEEN 11 AND 29 DEGREES

**CODE**      **SUITS PIPE SIZE**

GAF253-D48      48mm



## SLOPING 11° TO 29° LONG TEE

- THE INSIDE OF THE FITTING HAS ENOUGH ROOM SUCH THAT THE ANGLE CAN BE SET BETWEEN 11 AND 29 DEGREES

**CODE**      **SUITS PIPE SIZE**

GAF255-D48      48mm



## SLOPING 11° TO 29° CROSS

- THE INSIDE OF THE FITTING HAS ENOUGH ROOM SUCH THAT THE ANGLE CAN BE SET BETWEEN 11 AND 29 DEGREES

**CODE**      **SUITS PIPE SIZE**

GAF256-D48      48mm



## FLOOR GRATING CLIP

**CODE**

GAF310





## ALUMINIUM END CAP

CODE	SUITS PIPE SIZE
GAF333-A27	27mm
GAF333-B34	34mm
GAF333-C42	42mm
GAF333-D48	48mm
GAF333-E60	60mm



## DISABILITY 180° RAIL RETURN

CODE	OUTSIDE Ø
GAF721-C42	42mm



## DISABILITY 180° RAIL END

- OVERALL LENGTH IS 1500mm

CODE	OUTSIDE Ø
GAF724-C42	42mm



## DISABILITY 90° ELBOW

- UNLIKE THE OTHER FITTINGS, THIS PART FASTENS TO THE INSIDE WALL OF THE PIPE

CODE	SUITS PIPE SIZE
GAF725-C42	42mm (32 NB)



## DISABILITY 90° INTERNAL POST ELBOW

- UNLIKE THE OTHER FITTINGS, THE TOP PART FASTENS TO THE INSIDE WALL OF THE PIPE, AND THE BOTTOM PART FASTENS TO THE INSIDE WALL OF A FITTING (EG: GAF125-C42 ON PG 69)

CODE	SUITS PIPE SIZE	SUITS FITTING SIZE
GAF728-C42	42mm (32 NB)	C42



# GALVANISED FITTINGS



## DISABILITY 90° EXTERNAL POST ELBOW

- UNLIKE THE OTHER FITTINGS, THE TOP PART FASTENS TO THE INSIDE WALL OF THE PIPE, AND THE BOTTOM PART FASTENS TO THE INSIDE WALL OF A FITTING (EG: GAF125-C42 ON PG 69)

CODE	SUITS PIPE SIZE	SUITS FITTING SIZE
GAF729-C42	42mm (32 NB)	C42



## DISABILITY WALL FLANGE

- THIS FITTING IS USED IN CONJUNCTION WITH THE GAF725-C42 FITTING ON PG 83

CODE	FITS OVER THE END OF FITTING
GAF731-C42	GAF725-C42



## DISABILITY RAIL JOINER WALL BRACKET

- UNLIKE THE OTHER FITTINGS, THIS PART FASTENS TO THE INSIDE WALL OF THE PIPE

CODE	SUITS PIPE SIZE
GAF745-C42	42mm (32 NB)
GAF745-D48	48mm (40 NB)



## DISABILITY RAIL WALL BRACKET

CODE	SUITS PIPE SIZE
GAF746-C42	42mm



## DISABILITY RAIL JOINER POST BRACKET

- UNLIKE THE OTHER FITTINGS, THE TOP PART FASTENS TO THE INSIDE WALL OF THE PIPE, AND THE BOTTOM PART FASTENS TO THE INSIDE WALL OF A FITTING (EG: GAF125-C42 ON PG 69)

CODE	SUITS PIPE SIZE	SUITS FITTING SIZE
GAF747-C42	42mm (32 NB)	C42
GAF747-D48	48mm (40 NB)	D48





## DISABILITY RAIL SUPPORT POST BRACKET

- UNLIKE THE OTHER FITTINGS, THE TOP PART FASTENS TO THE INSIDE WALL OF THE PIPE, AND THE BOTTOM PART FASTENS TO THE INSIDE WALL OF A FITTING (EG: GAF125-C42 ON PG 69)

CODE	SUITS PIPE SIZE	SUITS FITTING SIZE
GAF748-C42	42mm	C42



## DISABILITY ADJUSTABLE RAIL JOINER CONNECTOR

- UNLIKE THE OTHER FITTINGS, THE TOP PART FASTENS TO THE INSIDE WALL OF THE PIPE, WHEREAS THE BASE FASTENS TO THE OUTSIDE OF THE PIPE.

CODE	SUITS PIPE SIZE
GAF750-C42	42mm (32 NB)
GAF750-D48	48mm (40 NB)



## DISABILITY ADJUSTABLE RAIL JOINER CONNECTOR

- UNLIKE THE OTHER FITTINGS, THE TOP PART FASTENS TO THE INSIDE WALL OF THE PIPE, WHEREAS THE BASE FASTENS TO THE OUTSIDE OF THE PIPE.

CODE	HORIZONTAL PIPE SIZE	VERTICAL PIPE SIZE
GAF750-C42/D48	42mm (32 NB)	48mm



## DISABILITY ADJUSTABLE RAIL SUPPORT CONNECTOR

CODE	SUITS PIPE SIZE
GAF751-C42	42mm (32 NB)



## DISABILITY ADJUSTABLE RAIL SUPPORT CONNECTOR

CODE	HORIZONTAL PIPE SIZE	VERTICAL PIPE SIZE
GAF751-C42/D48	42mm (32 NB)	48mm



# GALVANISED FITTINGS



## DISABILITY ADJUSTABLE ELBOW

- THIS FITTING IS USED IN CONJUNCTION WITH THE GAF150-C42 FITTING ON PG 73

CODE	FITS OVER THE END OF FITTING
GAF764-C42	GAF150-C42



## RUBBER "O" RING

- WORKS WITH THE DISABILITY FITTINGS THAT REQUIRE AN INTERNAL FIT INTO THE GALVANISED PIPE.

CODE	SUITS PIPE SIZE
GAF797-C42	42mm



## HEX SET SCREW

- THESE SET SCREWS ARE SUPPLIED WITH ALL FITTINGS, BUT CAN BE PURCHASED SEPARATELY IF EXTRA ARE NEEDED

CODE	SUITS FITTINGS
GAA300-AB	A27 & B34
GAA300-CDE	C42, D48 & E60



## SECURITY SET SCREW

- IF SECURITY IS AN ISSUE, THEN THE HEX SET SCREWS THAT ARE SUPPLIED WITH THE FITTINGS CAN BE REPLACED WITH A SPECIAL SHAPED SECURITY SET SCREW.

CODE	SUITS FITTINGS
GAA303-AB	A27 & B34
GAA303-CDE	C42, D48 & E60



## PLASTIC SETSCREW

CODE	SUITS FITTINGS
GAA305-CDE	C42, D48 & E60





## HEX KEY

- USED TO FASTEN/LOOSEN HEX SET SCREWS

CODE	SUITS FITTINGS
GAA301-AB	A27 & B34
GAA301-CDE	C42, D48 & E60



## SECURITY KEY

- USED TO FASTEN/LOOSEN SECURITY SET SCREWS

CODE	SUITS FITTINGS
GAA304-AB	A27 & B34
GAA304-CDE	C42, D48 & E60



## RATCHET TOOL FOR ALL FITTINGS

- A HANDY TOOL TO QUICKLY FASTEN/LOOSEN HEX SET SCREWS

CODE
GAA302



## SILVER ZINC GALVANISING SPRAY

- TOUCH-UP SPRAY FOR THE FITTINGS

CODE
GAA390

All of the pipe fittings are made from malleable iron and then hot-dipped galvanised to exceed the requirements of AS NZS 4680:2006, giving a durable corrosion resistant finished surface for extended life. A second additional coating is then applied over the top of the galvanising, to enhance further the corrosion protection and to offer a premium quality, aesthetically pleasing appearance. As a result they are suitable for exterior and interior use.

No welding is required; as all pipe fittings come with a hexagonal set screw that allows for quick connection of the fitting to the pipe.



# VERANDAH POSTS



## VERANDAH POSTS

- THE IMAGES ABOVE ARE ALL OF THE 2.7 METRE POSTS. AS SEEN IN THE TABLE BELOW, SOME OF THE DESIGNS WE ALSO MAKE IN 3.0 METRE LENGTHS. FOR THESE POSTS, THE EXTRA 300mm IS ADDED TO THE LENGTH OF THE SQUARE SECTION ON TOP.

CODE	TIMBER SPECIES	DIMENSIONS	DESCRIPTION
AP001R	H3 LOSP TREATED PINE	2700 x 112 x 112	2.7m FEDERATION SQUARE POST
AP013R	H3 LOSP TREATED PINE	3000 x 112 x 112	3.0m FEDERATION SQUARE POST
AP002R	H3 LOSP TREATED PINE	2700 x 112 x 112	2.7m FEDERATION ROUND POST
AP014R	H3 LOSP TREATED PINE	3000 x 112 x 112	3.0m FEDERATION ROUND POST
AP015R	H3 LOSP TREATED PINE	2700 x 112 x 112	2.7m SQUARE TURNED POST
AP020R	H3 LOSP TREATED PINE	3000 x 112 x 112	3.0m SQUARE TURNED POST
AP003R	H3 LOSP TREATED PINE	2700 x 90 x 90	2.7m CAMDEN POST
AP004R	H3 LOSP TREATED PINE	2700 x 90 x 90	2.7m FLAGSTAFF POST
AP021R	PRIMED H3 LOSP TREATED PINE	2700 x 88 x 88	2.7m CHAMFERED POST
AP022R	PRIMED H3 LOSP TREATED PINE	2700 x 88 x 88	2.7m CHAMFERED & FLUTED POST





# WALL PLATES & ROOF FINIALS

AG025R



AW001R



AW002R



AW003R



AG001R

AG002R

AG003R



AG020R



AG051R

## WALL PLATES & ROOF FINIALS

CODE	TIMBER SPECIES	DIMENSIONS	DESCRIPTION	EXTRA INFORMATION
AW001R	H3 LOSP TREATED PINE	1345 x 112 x 54	112mm FEDERATION WALL PLATE	THIS WALL PLATE IS DESIGNED TO BE USED WITH THE FOLLOWING 112sq VERANDAH POSTS AP001R, AP002R, AP013R & AP014R
AW002R	H3 LOSP TREATED PINE	890 x 90 x 42	90mm CAMDEN WALL PLATE	THIS WALL PLATE IS DESIGNED TO BE USED WITH THE FOLLOWING 90sq VERANDAH POSTS AP003R & AP004R
AW003R	H3 LOSP TREATED PINE	1345 x 112 x 54	112mm SQUARE TURNED WALL PLATE	THIS WALL PLATE IS DESIGNED TO BE USED WITH THE FOLLOWING 112sq VERANDAH POSTS AP015R & AP020R
AG001R	H3 LOSP TREATED PINE	1000 x 68 x 68	1000mm ROOF FINIAL	LENGTH OF SQUARE SECTION IS 400mm
AG002R	H3 LOSP TREATED PINE	1200 x 68 x 68	1200mm ROOF FINIAL	LENGTH OF SQUARE SECTION IS 600mm
AG003R	H3 LOSP TREATED PINE	1450 x 68 x 68	1450mm ROOF FINIAL	LENGTH OF SQUARE SECTION IS 850mm
AG020R	H3 LOSP TREATED PINE	680 x 57 x 57	680mm ROOF FINIAL	LENGTH OF SQUARE SECTION IS 300mm
AG025R	H3 LOSP TREATED PINE	450 x 85 Ø	MORPHETT ROOF FINIAL TOP	THE 38Ø PIN ON THE BOTTOM FITS INTO THE HOLE THAT IS ON TOP OF THE SQUARE SECTION ON AG051R
AG051R	H3 LOSP TREATED PINE	1325 x 90 x 90	MORPHETT ROOF FINIAL BOTTOM	LENGTH OF SQUARE SECTION IS 1110mm. THE TOP OF THE SQUARE SECTION HAS A 38Ø HOLE IN IT. THE AG025R FITS INTO THIS HOLE.





### ROOF FINIAL

- LENGTH OF SQUARE SECTION IS 150mm

CODE	TIMBER SPECIES	DIMENSIONS
AG034R	H3 LOSP TREATED PINE	350 x 57 x 57



### GOOSENECK FINIAL No.1

CODE	TIMBER SPECIES	DIMENSIONS
AG032R	H3 LOSP TREATED PINE	390 x 225 x 64



### GOOSENECK FINIAL No.2

CODE	TIMBER SPECIES	DIMENSIONS
AG033R	WESTERN RED CEDAR	330 x 460 x 44



### ROSETTES

CODE	TIMBER SPECIES	DIMENSIONS
AR001R	H3 LOSP TREATED PINE	19 x 80 Ø
AR002R	H3 LOSP TREATED PINE	19 x 110 Ø
AR004R	H3 LOSP TREATED PINE	19 x 175 Ø



### POST CAPITAL MOULD (ASSEMBLED)

- THIS PRODUCT COMES ASSEMBLED READY TO SLIP OVER A POST DURING THE INSTALLATION PROCESS. IF YOUR POST IS ALREADY IN PLACE, THEN WE RECOMMEND USING THE AM009R (PG 91)

CODE	TIMBER SPECIES	DIMENSIONS
AM003R	H3 LOSP TREATED PINE	FITS A 90 x 90 POST
AM006R	H3 LOSP TREATED PINE	FITS A 112 x 112 POST





## POST CAPITAL MOULD (UN-ASSEMBLED)

- IF YOUR POST IS ALREADY INSTALLED OR IF THE SIZE OF YOUR POST IS NOT CLOSE TO 90x90 OR 112x112, THEN THIS 895mm LENGTH OF MOULD WILL BE ENOUGH FOR YOU TO CUT AND MITRE AROUND A POST UP TO 125x125

CODE	TIMBER SPECIES	DIMENSIONS
AM009R	H3 LOSP TREATED PINE	895 X 63 x 44



## FEDERATION WINDOW CANOPY

- WHEN ORDERING THIS PRODUCT, A QUANTITY OF 1 MEANS 1 CANOPY SIDE. WE DON'T SUPPLY ANY OF THE OTHER COMPONENTS THAT WOULD TYPICALLY MAKE UP A WINDOW CANOPY.

CODE	TIMBER SPECIES	DIMENSIONS
AH001R	H3 LOSP TREATED PINE	740mm REACH



## BUNGALOW WINDOW CANOPY

- WHEN ORDERING THIS PRODUCT, A QUANTITY OF 1 MEANS 1 CANOPY SIDE. WE DON'T SUPPLY ANY OF THE OTHER COMPONENTS THAT WOULD TYPICALLY MAKE UP A WINDOW CANOPY.

CODE	TIMBER SPECIES	DIMENSIONS
AH002R	H3 LOSP TREATED PINE	815mm REACH



## 88x42 PRIMED LOSP HANDRAIL

- THIS HANDRAIL COMES WITH 3 STEPPED REBATES 42mm, 32mm & 19mm

CODE	TIMBER SPECIES	DIMENSIONS
JH165R	PRIMED H3 LOSP TREATED PINE	88 x 42



## 66x30 PRIMED LOSP BASE RAIL

- REBATED ON ONE SIDE TO ALLOW WATER TO RUN OFF

CODE	TIMBER SPECIES	DIMENSIONS
JH166R	PRIMED H3 LOSP TREATED PINE	66 x 30



**135mm DECKING HARDWOOD HANDRAIL**

CODE	TIMBER SPECIES	DIMENSIONS
JH160Q	MERBAU	135 x 38

**STAIR TREAD**

CODE	TIMBER SPECIES	DIMENSIONS
JT007Q	MERBAU	1200 x 240 x 42

**FRETWORK SPINDLE No.1**

- PIN DIAMETER ON EACH END IS 13mm

CODE	TIMBER SPECIES	DIMENSIONS
AS001R	H3 LOSP TREATED PINE	150 x 32 Ø

**FRETWORK SPINDLE No.2**

- PIN DIAMETER ON EACH END IS 13mm

CODE	TIMBER SPECIES	DIMENSIONS
AS002R	H3 LOSP TREATED PINE	150 x 32 Ø

**TASMAN FRETWORK SPINDLE**

- LENGTH OF TURNING IS 115mm

CODE	TIMBER SPECIES	DIMENSIONS
AS025R	H3 LOSP TREATED PINE	200 x 42 x 42





## GUMNUT FRETWORK PANEL

CODE	TIMBER SPECIES	DIMENSIONS
AS030R	H3 LOSP TREATED PINE	230 x 90 x 19



## TULIP FRETWORK PANEL

CODE	TIMBER SPECIES	DIMENSIONS
AS032R	H3 LOSP TREATED PINE	230 x 90 x 19



AA001R



AA015R



AA04R



AA006R

## TREATED PINE BALUSTERS

CODE	TIMBER SPECIES	DIMENSIONS	DESCRIPTION
AA001R	H3 LOSP TREATED PINE	1000 x 42 x 42	TASMAN BALUSTER
AA015R	H3 LOSP TREATED PINE	1000 x 42 x 42	CHAMFERED BALUSTER
AA004R	H3 LOSP TREATED PINE	930 x 90 x 19	GUMNUT BALUSTER
AA006R	H3 LOSP TREATED PINE	930 x 90 x 19	TULIP BALUSTER



# VERANDAH BRACKETS



## VERANDAH BRACKET No.1

CODE	TIMBER SPECIES	DIMENSIONS
AB001R	H3 LOSP TREATED PINE	360 x 360 x 32



## VERANDAH BRACKET No.4

CODE	TIMBER SPECIES	DIMENSIONS
AB004R	H3 LOSP TREATED PINE	400 x 400 x 32



## VERANDAH BRACKET No.5

CODE	TIMBER SPECIES	DIMENSIONS
AB005R	H3 LOSP TREATED PINE	345 x 345 x 32



## VERANDAH BRACKET No.9

CODE	TIMBER SPECIES	DIMENSIONS
AB009R	H3 LOSP TREATED PINE	300 x 300 x 32



## VERANDAH BRACKET No.13

CODE	TIMBER SPECIES	DIMENSIONS
AB013R	H3 LOSP TREATED PINE	250 x 250 x 32





## VERANDAH BRACKET No.14

CODE	TIMBER SPECIES	DIMENSIONS
AB014R	H3 LOSP TREATED PINE	240 x 240 x 32



## VERANDAH BRACKET No.16

CODE	TIMBER SPECIES	DIMENSIONS
AB016R	H3 LOSP TREATED PINE	255 x 180 x 32



## VERANDAH BRACKET No.20

CODE	TIMBER SPECIES	DIMENSIONS
AB020R	H3 LOSP TREATED PINE	415 x 240 x 32



## VERANDAH BRACKET No.21

CODE	TIMBER SPECIES	DIMENSIONS
AB021R	H3 LOSP TREATED PINE	450 x 260 x 32



## EAVE BRACKET No.1

CODE	TIMBER SPECIES	DIMENSIONS
AB032R	H3 LOSP TREATED PINE	190 x 270 x 42





### EAVE BRACKET No.2

CODE	TIMBER SPECIES	DIMENSIONS
AB033R	H3 LOSP TREATED PINE	190 x 270 x 42



### WINDSOR FENCE POST CAPITALS

- A 7mm DIAMETER HOLE IS DRILLED INTO THE UNDERSIDE OF THE CAPITAL TO SUIT THE IF034X (PG 99) FIXING SCREW.

CODE	TIMBER SPECIES	DIMENSIONS
AC001R	H3 LOSP TREATED PINE	185 x 93 Ø
AC013R	H3 LOSP TREATED PINE	130 x 65 Ø



### BALL FENCE POST CAPITALS

- A 7mm DIAMETER HOLE IS DRILLED INTO THE UNDERSIDE OF THE CAPITAL TO SUIT THE IF034X (PG 99) FIXING SCREW.

CODE	TIMBER SPECIES	DIMENSIONS
AC002R	H3 LOSP TREATED PINE	140 x 93 Ø
AC005R	H3 LOSP TREATED PINE	165 x 110 Ø
AC021R	H3 LOSP TREATED PINE	105 x 65 Ø



### ACORN FENCE POST CAPITAL

- A 7mm DIAMETER HOLE IS DRILLED INTO THE UNDERSIDE OF THE CAPITAL TO SUIT THE IF034X (PG 99) FIXING SCREW.

CODE	TIMBER SPECIES	DIMENSIONS
AC003R	H3 LOSP TREATED PINE	155 x 93 Ø



### SAXON FENCE POST CAPITAL

- A 7mm DIAMETER HOLE IS DRILLED INTO THE UNDERSIDE OF THE CAPITAL TO SUIT THE IF034X (PG 99) FIXING SCREW.

CODE	TIMBER SPECIES	DIMENSIONS
AC034R	H3 LOSP TREATED PINE	148 x 85 Ø







## OXFORD FENCE POST CAPITAL

- A 7mm DIAMETER HOLE IS DRILLED INTO THE UNDERSIDE OF THE CAPITAL TO SUIT THE IF034X (PG 99) FIXING SCREW.

CODE	TIMBER SPECIES	DIMENSIONS
AC035R	H3 LOSP TREATED PINE	156 x 85 Ø



## PYRAMID FENCE POST CAPITALS

- THIS STYLE OF CAPITAL IS RECESSED UNDERNEATH TO DROP OVER THE VARIOUS SIZED POSTS THAT THEY FIT (AS SHOWN IN THE TABLE BELOW).

CODE	TIMBER SPECIES	DIMENSIONS
AC029R	H3 LOSP TREATED PINE	FITS OVER A 90 x 90 POST
AC031R	H3 LOSP TREATED PINE	FITS OVER A 100 x 100 POST
AC032R	H3 LOSP TREATED PINE	FITS OVER A 115 x 115 POST
AC033R	H3 LOSP TREATED PINE	FITS OVER A 125 x 125 POST
AC038R	H3 LOSP TREATED PINE	FITS OVER A 135 x 135 POST
AC042R	H3 LOSP TREATED PINE	FITS OVER A 140 x 140 POST
AC043R	H3 LOSP TREATED PINE	FITS OVER A 150 x 150 POST
AC039R	H3 LOSP TREATED PINE	FITS OVER A 200 x 200 POST



## BALMAIN FENCE POST CAPITAL

- THIS STYLE OF CAPITAL IS RECESSED UNDERNEATH TO DROP OVER A 90 x 90 POST.

CODE	TIMBER SPECIES	DIMENSIONS
AC044R	H3 LOSP TREATED PINE	FITS OVER A 90 x 90 POST



## POINTED FENCE POST CAPITAL

- A 7mm DIAMETER HOLE IS DRILLED INTO THE UNDERSIDE OF THE CAPITAL TO SUIT THE IF034X (PG 99) FIXING SCREW.

CODE	TIMBER SPECIES	DIMENSIONS
AC054R	H3 LOSP TREATED PINE	FITS A 90 x 90 POST



# FENCE POST CAPITALS



## SQUARE WINDSOR FENCE POST CAPITAL

- A 7mm DIAMETER HOLE IS DRILLED INTO THE UNDERSIDE OF THE CAPITAL TO SUIT THE IF034X (PG 99) FIXING SCREW.

CODE	TIMBER SPECIES	DIMENSIONS
AC028R	H3 LOSP TREATED PINE	115 x 85 x 85



## FLAT FENCE POST CAPITALS

- THIS STYLE OF CAPITAL IS RECESSED UNDERNEATH TO DROP OVER THE VARIOUS SIZED POSTS THAT THEY FIT (AS SHOWN IN THE TABLE BELOW)

CODE	TIMBER SPECIES	DIMENSIONS
AC050R	H3 LOSP TREATED PINE	FITS OVER A 90 x 90 POST
AC051R	H3 LOSP TREATED PINE	FITS OVER A 100 x 100 POST
AC052R	H3 LOSP TREATED PINE	FITS OVER A 115 x 115 POST
AC053R	H3 LOSP TREATED PINE	FITS OVER A 125 x 125 POST



## COPPER POST CAPITALS

- THIS STYLE OF CAPITAL IS RECESSED UNDERNEATH TO DROP OVER A 90 x 90 POST.

CODE	MATERIAL	DIMENSIONS
AC047XCO	COPPER	FITS OVER A 90 x 90 POST



## BLACK METAL POST CAPITALS

- THIS STYLE OF CAPITAL IS RECESSED UNDERNEATH TO DROP OVER A 90 x 90 POST.

CODE	MATERIAL	DIMENSIONS
AC047XMB	BLACK POWDERCOAT	FITS OVER A 90 x 90 POST



## STAINLESS STEEL POST CAPITALS

- THIS STYLE OF CAPITAL IS RECESSED UNDERNEATH TO DROP OVER A 90 x 90 POST.

CODE	MATERIAL	DIMENSIONS
AC047XSS	STAINLESS STEEL	FITS OVER A 90 x 90 POST





# DOWEL SCREWS & PRESERVATIVES



## DOUBLE ENDED DOWEL SCREW

- USED TO FASTEN THE FOLLOWING POST CAPITALS TO THE TOP OF FENCE POSTS; AC001R, AC002R, AC003R, AC005R, AC013R, AC021R, AC028R, AC034R, AC035R, & AC054R

CODE	DIMENSIONS
------	------------

IF034X	100 x 8 Ø
--------	-----------



## TIMBER TREATMENT WOOD PRESERVATIVES - CAN

- APPLY WITH A PAINT BRUSH ONTO AN UN-TREATED SURFACE.

CODE	QUANTITY
------	----------

IF116X	2 Litre CAN
--------	-------------



## TIMBER TREATMENT WOOD PRESERVATIVES - AEROSOL

- SPRAY ONTO AN UN-TREATED SURFACE.

CODE	QUANTITY
------	----------

IF117X	300 Grams AEROSOL
--------	-------------------

## DO H3 TREATED PRODUCTS NEED TO BE PAINTED?

Yes, and the reason is that the treatment used is only a surface treatment, which means that if the timber cracks (which it will after being exposed to the outside elements), then these cracks will allow water to penetrate deeper into the timber at a level below where the surface treatment finishes. Once this happens, the timber will begin to decay and rot from the inside to out. It is therefore very important that a suitable exterior quality paint is applied to the product as soon as possible, and then reapplied regularly if any cracking in the timber is noticed. Speak to your local paint supplier for more information on which paints would be best suited to your environment.

# ARCHITRAVE BLOCKS & CORBELS



## STEP ARCHITRAVE BLOCK

CODE	TIMBER SPECIES	DIMENSIONS (LxWxD)
JA001R	PINE	95 x 95 x 30



## PYRAMID ARCHITRAVE BLOCK

CODE	TIMBER SPECIES	DIMENSIONS (LxWxD)
JA002R	PINE	95 x 95 x 35



## ROUND ARCHITRAVE BLOCK

CODE	TIMBER SPECIES	DIMENSIONS (LxWxD)
JA003R	PINE	95 x 95 x 22



## QAUTREFOIL ARCHITRAVE BLOCK

CODE	TIMBER SPECIES	DIMENSIONS (LxWxD)
JA005R	PINE	95 x 95 x 22



## S1 SQUARE

CODE	TIMBER SPECIES	DIMENSIONS (LxWxD)
HC032R	PINE	70 x 70 x 19





## STR1 SQUARE

CODE	TIMBER SPECIES	DIMENSIONS (LxWxD)
HC034R	PINE	70 x 70 x 19



## RTR1 ROUND

CODE	TIMBER SPECIES	DIMENSIONS (LxWxD)
HC036R	PINE	65 Ø x 12



## SL1 CORBEL

CODE	TIMBER SPECIES	DIMENSIONS (LxWxD)
HC053R	PINE	78 x 60 x 12



## SC2 CENTRE

CODE	TIMBER SPECIES	DIMENSIONS (LxWxD)
HC054R	PINE	170 x 140 x 19



## T2 CORNER PAIR

- THIS PRODUCT IS SOLD AS A PAIR (1 LEFT AND 1 RIGHT). THE DIMENSION IN THE TABLE BELOW IS FOR 1 SIDE ONLY.

CODE	TIMBER SPECIES	DIMENSIONS (LxWxD)
HC031R	PINE	115 x 110 x 19 (1 side)



# CORBELS & CARVINGS



## L1 & L2 LEAF PAIR

- THIS PRODUCT IS SOLD AS A PAIR (1 LEFT AND 1 RIGHT). THE DIMENSION IN THE TABLE BELOW IS FOR 1 SIDE ONLY.

CODE	TIMBER SPECIES	DIMENSIONS (LxWxD)
HC050R	PINE	150 x 60 x 12 (1 side)
HC051R	PINE	220 x 70 x 12 (1 side)



## C2 & C6 TIMBER CORBELS

CODE	TIMBER SPECIES	DIMENSIONS (LxWxD)
HC002R	PINE	120 x 42 x 19
HC006R	PINE	170 x 60 x 40



## C8 & C28 TIMBER CORBELS

CODE	TIMBER SPECIES	DIMENSIONS (LxWxD)
HC008R	PINE	205 x 70 x 65
HC028R	PINE	140 x 60 x 55



## No.3, 33 & 3L TIMBER CORBELS

CODE	TIMBER SPECIES	DIMENSIONS (LxWxD)
HC030R	PINE	340 x 90 x 90
HC033R	PINE	225 x 70 x 65
HC011R	PINE	385 x 140 x 115



## C13 TIMBER CORBEL

CODE	TIMBER SPECIES	DIMENSIONS (LxWxD)
HC013R	PINE	300 x 90 x 85





## C22 TIMBER CORBEL

CODE	TIMBER SPECIES	DIMENSIONS (LxWxD)
HC022R	PINE	230 x 70 x 70



## No.4 TIMBER CORBEL

CODE	TIMBER SPECIES	DIMENSIONS (LxWxD)
HC040R	PINE	345 x 90 x 70



## No.6 & 66 TIMBER CORBELS

CODE	TIMBER SPECIES	DIMENSIONS (LxWxD)
HC060R	PINE	350 x 90 x 80
HC066R	PINE	300 x 70 x 70



## No.2 & 22 TIMBER CORBELS

CODE	TIMBER SPECIES	DIMENSIONS (LxWxD)
HC016R	PINE	280 x 85 x 85
HC017R	PINE	225 x 70 x 70



## No.10 TIMBER CORBEL

CODE	TIMBER SPECIES	DIMENSIONS (LxWxD)
HC010R	PINE	385 x 120 x 100



# CORBELS & CARVINGS



## No.5L TIMBER CORBEL

CODE	TIMBER SPECIES	DIMENSIONS (LxWxD)
HC012R	PINE	365 x 175 x 115



## No.2L TIMBER CORBEL

CODE	TIMBER SPECIES	DIMENSIONS (LxWxD)
HC015R	PINE	325 x 175 x 135



## No.5LS TIMBER CORBEL

CODE	TIMBER SPECIES	DIMENSIONS (LxWxD)
HC019R	PINE	355 x 45 x 120



## FLUTED 70, 90 & 130 TIMBER CORBELS

CODE	TIMBER SPECIES	DIMENSIONS (LxWxD)
HC070R	PINE	170 x 70 x 50
HC071R	PINE	220 x 90 x 65
HC072R	PINE	320 x 130 x 95



## SW1 & SW2 CARVINGS

CODE	TIMBER SPECIES	DIMENSIONS (LxWxD)
HC055R	PINE	380 x 55 x 15
HC056R	PINE	490 x 75 x 15







## 9.5mm (3/8") COVER BUTTONS

CODE	TIMBER SPECIES	DIMENSIONS
FB001J	JARRAH	FITS A 9.5mm (3/8") HOLE
FB001M	MERANTI	FITS A 9.5mm (3/8") HOLE
FB001R	PINE	FITS A 9.5mm (3/8") HOLE
FB001T	VICTORIAN ASH	FITS A 9.5mm (3/8") HOLE



## 12.7mm (1/2") COVER BUTTONS

CODE	TIMBER SPECIES	DIMENSIONS
FB002J	JARRAH	FITS A 12.7mm (1/2") HOLE
FB002M	MERANTI	FITS A 12.7mm (1/2") HOLE
FB002Q	KWILA	FITS A 12.7mm (1/2") HOLE
FB002R	PINE	FITS A 12.7mm (1/2") HOLE
FB002T	VICTORIAN ASH	FITS A 12.7mm (1/2") HOLE



## 25.4mm (1") COVER BUTTONS

CODE	TIMBER SPECIES	DIMENSIONS
FB006J	JARRAH	FITS A 25.4mm (1") HOLE
FB006M	MERANTI	FITS A 25.4mm (1") HOLE
FB006Q	KWILA	FITS A 25.4mm (1") HOLE
FB006R	PINE	FITS A 25.4mm (1") HOLE
FB006T	VICTORIAN ASH	FITS A 25.4mm (1") HOLE



## 26Ø SPINDLE

- PIN DIAMETER ON EACH END IS 12.7mm (1/2")

CODE	TIMBER SPECIES	DIMENSIONS
JS001R	PINE	110 x 26 Ø



## 21Ø GALLERY SPINDLE

- PIN DIAMETER ON EACH END IS 10mm
- 51mm HEIGHT DOES NOT INCLUDE THE LENGTH OF THE PIN.

CODE	TIMBER SPECIES	DIMENSIONS
FS016C	PINE	51 x 21 Ø



# SPINDLES & FINIALS



## 18Ø GALLERY SPINDLE

- PIN DIAMETER ON EACH END IS 8mm
- 38mm HEIGHT DOES NOT INCLUDE THE LENGTH OF THE PIN.

CODE	TIMBER SPECIES	DIMENSIONS
------	----------------	------------

FS019C	PINE	38 x 18 Ø
--------	------	-----------



## 24Ø FINIAL

- PIN DIAMETER IS 10mm
- 40mm HEIGHT DOES NOT INCLUDE THE LENGTH OF THE PIN.

CODE	TIMBER SPECIES	DIMENSIONS
------	----------------	------------

FF014R	PINE	40 x 24 Ø
--------	------	-----------



## 34Ø FINIAL

- PIN DIAMETER IS 10mm
- 63mm HEIGHT DOES NOT INCLUDE THE LENGTH OF THE PIN.

CODE	TIMBER SPECIES	DIMENSIONS
------	----------------	------------

FF016R	PINE	63 x 34 Ø
--------	------	-----------



## 40Ø FINIAL

- PIN DIAMETER IS 10mm
- 78mm HEIGHT DOES NOT INCLUDE THE LENGTH OF THE PIN.

CODE	TIMBER SPECIES	DIMENSIONS
------	----------------	------------

FF019R	PINE	78 x 40 Ø
--------	------	-----------





## 34Ø KNOB with PIN

- PIN DIAMETER IS 12.7mm (1/2")
- 33mm HEIGHT DOES NOT INCLUDE THE LENGTH OF THE PIN.

CODE	TIMBER SPECIES	DIMENSIONS
FK013R	PINE	33 x 30 Ø



## 40Ø KNOB with INSERT

- COMES WITH A 4mm THREADED INSERT IN THE BASE

CODE	TIMBER SPECIES	DIMENSIONS
FK043A	AMERICAN OAK	31 x 40 Ø
FK043J	JARRAH	31 x 40 Ø
FK043K	BLACKWOOD	31 x 40 Ø
FK043R	PINE	31 x 40 Ø
FK043T	VICTORIAN ASH	31 x 40 Ø



## 85Ø CHEST LEG

- PIN DIAMETER IS 30mm
- 145mm HEIGHT DOES NOT INCLUDE THE LENGTH OF THE PIN.

CODE	TIMBER SPECIES	DIMENSIONS (LxØ)
FL026R	PINE	145 x 85 Ø



## 65Ø CHEST LEG

- 5/16" LAG SCREW THAT PROTRUDES 18mm.

CODE	TIMBER SPECIES	DIMENSIONS (LxØ)
FL032R	PINE	90 x 65 Ø



## 79Ø "CHELSEA" LEG

- 5/16" LAG SCREW THAT PROTRUDES 35mm.

CODE	TIMBER SPECIES	DIMENSIONS (LxØ)
FL385R	PINE	103 x 79 Ø



# CHEST & LOUNGE LEGS



## 85Ø "ROUND TAPERED" LEG

- 5/16" LAG SCREW THAT PROTRUDES 35mm.

CODE	TIMBER SPECIES	DIMENSIONS (LxØ)
FL387R	PINE	100 x 85 Ø



## 85Ø "OXFORD" BUN FOOT

- INCLUDES DRILL HOLES FOR EASE OF FIXING.

CODE	TIMBER SPECIES	DIMENSIONS (LxØ)
FL043R	PINE	45 x 85 Ø



## 108Ø "LIGHT" BUN FOOT

- INCLUDES DRILL HOLES FOR EASE OF FIXING.

CODE	TIMBER SPECIES	DIMENSIONS (LxØ)
FL612R	PINE	61 x 108 Ø



## 85Ø "GASCOYNE" BUN FOOT

- INCLUDES DRILL HOLES FOR EASE OF FIXING.

CODE	TIMBER SPECIES	DIMENSIONS (LxØ)
FL877R	PINE	70 x 85 Ø



## 65Ø BUN FOOT

- INCLUDES DRILL HOLES FOR EASE OF FIXING.

CODE	TIMBER SPECIES	DIMENSIONS (LxØ)
FL115R	PINE	50 x 65 Ø





## 90 x 90 "HUNTER" CHEST LEG

- LENGTH OF SQUARE SECTION IS 80mm

CODE	TIMBER SPECIES	DIMENSIONS (LxWxD)
FL430R	PINE	160 x 90 x 90



## 65Ø "ROUND TAPERED" LEG

- 5/16" LAG SCREW THAT PROTRUDES 35mm.

CODE	TIMBER SPECIES	DIMENSIONS (LxØ)
FL492R	PINE	140 x 65 Ø



## 65 x 65 "SQUARE TAPERED" LEG

- TAPERED ON ALL 4 SIDES.
- 5/16" LAG SCREW THAT PROTRUDES 35mm.

CODE	TIMBER SPECIES	DIMENSIONS (LxWxD)
FL375R	PINE	140 x 65 x 65



## 85 x 85 "SQUARE TAPERED" LEG

- TAPERED ON ALL 4 SIDES.
- 5/16" LAG SCREW THAT PROTRUDES 35mm.

CODE	TIMBER SPECIES	DIMENSIONS (LxWxD)
FL386R	PINE	100 x 85 x 85



## 85 x 85 "CHEVRON" BUN FOOT

- TAPERED ON ALL 4 SIDES.
- INCLUDES DRILL HOLES FOR EASE OF FIXING.

CODE	TIMBER SPECIES	DIMENSIONS (LxWxD)
FL611R	PINE	45 x 85 x 85





## "STANFORD" LEGS

- TAPERED ON 2 ADJACENT SIDES.
- 5/16" LAG SCREW THAT PROTRUDES 35mm.

CODE	TIMBER SPECIES	DIMENSIONS (LxWxD)
FL805R	PINE	200 x 54 x 54
FL805T	VICTORIAN ASH	200 x 54 x 54



## "CUBE" LEGS

- TAPERED ON ALL 4 SIDES.
- 5/16" LAG SCREW THAT PROTRUDES 35mm.

CODE	TIMBER SPECIES	DIMENSIONS (LxWxD)
FL864R	PINE	200 x 54 x 54
FL864T	VICTORIAN ASH	200 x 54 x 54



## "SQUARE-LINE" LEGS

- TAPERED ON ALL 4 SIDES
- 5/16" LAG SCREW THAT PROTRUDES 15mm.

CODE	TIMBER SPECIES	DIMENSIONS (LxWxD)
FL945R	PINE	100 x 52 x 52
FL945T	VICTORIAN ASH	100 x 52 x 52
FL946R	PINE	150 x 52 x 52
FL946T	VICTORIAN ASH	150 x 52 x 52
FL947R	PINE	250 x 52 x 52
FL947T	VICTORIAN ASH	250 x 52 x 52
FL948R	PINE	350 x 52 x 52
FL948T	VICTORIAN ASH	350 x 52 x 52
FL949R	PINE	450 x 52 x 52
FL949T	VICTORIAN ASH	450 x 52 x 52
FL950R	PINE	600 x 52 x 52
FL950T	VICTORIAN ASH	600 x 52 x 52
FL951R	PINE	750 x 52 x 52
FL951T	VICTORIAN ASH	750 x 52 x 52



## "SLIM-LINE" LEGS

- 5/16" LAG SCREW THAT PROTRUDES 15mm.



CODE	TIMBER SPECIES	DIMENSIONS (LxØ)
FL892R	PINE	100 x 43 Ø
FL892T	VICTORIAN ASH	100 x 43 Ø
FL893R	PINE	150 x 43 Ø
FL893T	VICTORIAN ASH	150 x 43 Ø
FL873R	PINE	250 x 43 Ø
FL873T	VICTORIAN ASH	250 x 43 Ø
FL894R	PINE	350 x 43 Ø
FL894T	VICTORIAN ASH	350 x 43 Ø
FL895R	PINE	450 x 43 Ø
FL895T	VICTORIAN ASH	450 x 43 Ø
FL896R	PINE	600 x 43 Ø
FL896T	VICTORIAN ASH	600 x 43 Ø
FL883R	PINE	750 x 43 Ø
FL883T	VICTORIAN ASH	750 x 43 Ø

## "REGULAR-LINE" LEGS

- 5/16" LAG SCREW THAT PROTRUDES 15mm.



CODE	TIMBER SPECIES	DIMENSIONS (LxØ)
FL912R	PINE	100 x 55 Ø
FL912T	VICTORIAN ASH	100 x 55 Ø
FL913R	PINE	150 x 55 Ø
FL913T	VICTORIAN ASH	150 x 55 Ø
FL914R	PINE	250 x 55 Ø
FL914T	VICTORIAN ASH	250 x 55 Ø
FL915R	PINE	350 x 55 Ø
FL915T	VICTORIAN ASH	350 x 55 Ø
FL916R	PINE	450 x 55 Ø
FL916T	VICTORIAN ASH	450 x 55 Ø
FL917R	PINE	600 x 55 Ø
FL917T	VICTORIAN ASH	600 x 55 Ø
FL918R	PINE	750 x 55 Ø
FL918T	VICTORIAN ASH	750 x 55 Ø





FC083R



FC085R



FL021R



FL526R



FL421R



FL937R

## COLUMNS & TALL TABLE LEGS

CODE	TIMBER SPECIES	DIMENSIONS	DESCRIPTION	EXTRA INFORMATION
FC083R	PINE	900 x 90 x 90	90mm TURNED COLUMN	LENGTH OF TOP AND BOTTOM SQUARE IS 170mm
FC085R	PINE	900 x 90 x 90	90mm FLUTED COLUMN	LENGTH OF TOP AND BOTTOM SQUARE IS 170mm
FL021R	PINE	735 x 90 x 90	90mm TURNED DINING TABLE LEG	LENGTH OF TOP SQUARE IS 195mm
FL526R	PINE	735 x 130 x 130	130mm TURNED DINING TABLE LEG	LENGTH OF TOP SQUARE IS 195mm
FL421R	PINE	735 x 68 x 68	68mm TURNED DINING TABLE LEG	LENGTH OF TOP SQUARE IS 155mm
FL937R	PINE	1050 x 90 x 90	90mm TURNED BAR TABLE LEG	LENGTH OF TOP SQUARE IS 160mm







FL067R



FL068R



FL615R



FA087R



FA088R

## TALL TABLE & CABRIOLE LEGS

CODE	TIMBER SPECIES	DIMENSIONS	DESCRIPTION	EXTRA INFORMATION
FL067R	PINE	800 x 57 x 57	57mm WASH-STAND LEG	LENGTH OF TOP SQUARE IS 300mm
FL068R	PINE	800 x 57 x 57	57mm WASH-STAND LEG	LENGTH OF TOP SQUARE IS 160mm
FL615R	PINE	735 x 90 x 90	90mm SQUARE DINING TABLE LEG	LENGTH OF TOP SQUARE IS 180mm
FA087R	PINE	710 x 40 x 40	FRENCH PROVINCIAL HALL TABLE LEG	
FA088R	PINE	735 x 64 x 64	FRENCH PROVINCIAL DINING TABLE LEG	



# SHORT TABLE & CABRIOLE LEGS



FL016R



FL017R



FL088R



FA089T



FL573R

## SHORT TABLE & CABRIOLE LEGS

CODE	TIMBER SPECIES	DIMENSIONS	DESCRIPTION	EXTRA INFORMATION
FL016R	PINE	450 x 90 x 90	90mm TURNED COFFEE TABLE LEG	LENGTH OF TOP SQUARE IS 150mm
FL017R	PINE	450 x 68 x 68	68mm TURNED COFFEE TABLE LEG	LENGTH OF TOP SQUARE IS 150mm
FL088R	PINE	440 x 57 x 57	57mm TURNED COFFEE TABLE LEG	LENGTH OF TOP SQUARE IS 75mm
FA089T	VICTORIAN ASH	457 x 39 x 39	FRENCH PROVINCIAL CHAIR LEG	
FL573R	PINE	450 x 68 x 68	68mm SQUARE COFFEE TABLE LEG	LENGTH OF TOP SQUARE IS 160mm

## CABRIOLE LEGS



CODE	TIMBER SPECIES	OVERALL HEIGHT
FA006R	PINE	114mm (4 1/2")
FA007R	PINE	152mm (6")
FA007T	VICTORIAN ASH	152mm (6")
FA008R	PINE	228mm (9")
FA008T	VICTORIAN ASH	228mm (9")
FA009R	PINE	304mm (12")
FA010R	PINE	381mm (15")
FA073R	PINE	736mm (29")





## 5/16" T NUT

- SUITABLE FOR A 5/16" LAG SCREW

### CODE

IF148X



## 5/16" INSERT NUT

- SUITABLE FOR A 5/16" LAG SCREW

### CODE

IF151X



## 5/16" VERTICAL LEG PLATE

- SUITABLE FOR A 5/16" LAG SCREW
- THE HEAVY DUTY VERSION IS SUITED TO SITUATIONS WHERE WEIGHT IS INVOLVED, SUCH AS A CHAIR OR BED.

### CODE

### DESCRIPTION

IF149X

STANDARD VERTICAL LEG PLATE

IF149XHD

HEAVY DUTY VERTICAL LEG PLATE



## 5/16" ANGLED LEG PLATE

- SUITABLE FOR A 5/16" LAG SCREW
- THE ANGLE IS APPROXIMATELY 10 DEGREES
- THE HEAVY DUTY VERSION IS SUITED TO SITUATIONS WHERE WEIGHT IS INVOLVED, SUCH AS A CHAIR OR BED.

### CODE

### DESCRIPTION

IF150X

STANDARD ANGLED LEG PLATE

IF150XHD

HEAVY DUTY ANGLED LEG PLATE



## 5/16" ADJUSTABLE SWIVEL GLIDE

- THREAD SIZE IS 5/16"
- LENGTH OF THREAD IS 25mm

### CODE

IF152X





## CASTOR

CODE	FINISH
IF153XCP	CHROME PLATED
IF153XGP	SOLID BRASS



## CURTAIN RINGS

CODE	TIMBER SPECIES	INTERNAL/EXTERNAL DIAMETER
DA071R	PINE	65 Ø / 97 Ø
DA072R	PINE	75 Ø / 107 Ø
DA094R	PINE	50 Ø / 76 Ø



## HONEY DIPPER

CODE	TIMBER SPECIES	DIMENSIONS
DH041U	MYRTLE	123 x 23 Ø



## PEG

- PIN DIAMETER IS 12.7mm (1/2")
- 52mm HEIGHT DOES NOT INCLUDE THE LENGTH OF THE PIN.

CODE	TIMBER SPECIES	DIMENSIONS
DP013R	PINE	52 x 19 Ø



## FLAT STOOL SEAT

CODE	TIMBER SPECIES	DIMENSIONS
FM011T	VICTORIAN ASH	32 x 380 Ø





## TITEBOND ORIGINAL

- ALIPHATIC RESIN GLUE.
- INTERIOR USE ONLY.

CODE	SIZE
GL001	473 ml BOTTLE
GL002	946 ml BOTTLE
GL003	3.78 Litre BOTTLE
GL004	19 Litre DRUM



## TITEBOND PREMIUM 2

- CROSS LINKING PVA GLUE.
- SUITABLE FOR EXTERIOR USE, AS IT IS WATER RESISTANT.

CODE	SIZE
GL011	473 ml BOTTLE
GL012	946 ml BOTTLE
GL013	3.78 Litre BOTTLE



## TITEBOND ULTIMATE 3

- PROPRIETARY POLYMER GLUE.
- SUITABLE FOR EXTERIOR USE, AS IT IS WATER PROOF.

CODE	SIZE
GL021	473 ml BOTTLE
GL022	946 ml BOTTLE
GL023	3.78 Litre BOTTLE
GL024	19 Litre DRUM



## TITEBOND SUPREME

- ALIPHATIC RESIN GLUE.
- INTERIOR USE ONLY.
- PERFECT FOR POROUS TIMBERS LIKE PINE AND OAK.

CODE	SIZE
GL031	19 Litre DRUM



## TITEBOND POLYURETHANE

- POLYURETHANE GLUE.
- GREAT FOR "HARD TO GLUE" TIMBERS.

CODE	SIZE
GL101	355 ml BOTTLE





## TITEBOND MELAMINE

- MELAMINE GLUE
- GREAT FOR POROUS MATERIALS LIKE MDF

CODE	SIZE
GL111	473 ml BOTTLE



## TITEBOND INSTANT BOND MEDIUM

- ETHYL-CYANOACRYLATE-BASED WOOD GLUE
- ALMOST INSTANT SET TIMES

CODE	SIZE
GL121	60 ml BOTTLE

CODE	PAGE	CODE	PAGE	CODE	PAGE	CODE	PAGE	CODE	PAGE
AA001R	93	AC034R	96	AM003R	90	DA094R	116	FB006R	105
AA004R	93	AC035R	97	AM006R	90	DH041U	116	FB006T	105
AA006R	93	AC038R	97	AM009R	91	DP013R	116	FC083R	112
AA015R	93	AC039R	97	AP001R	88	FA006R	114	FC085R	112
AB001R	94	AC042R	97	AP002R	88	FA007R	114	FF014R	106
AB004R	94	AC043R	97	AP003R	88	FA007T	114	FF016C	106
AB005R	94	AC044R	97	AP004R	88	FA008R	114	FF019R	106
AB009R	94	AC047XCO	98	AP013R	88	FA008T	114	FK013R	107
AB013R	94	AC047XMB	98	AP014R	88	FA009R	114	FK043A	107
AB014R	95	AC047XSS	98	AP015R	88	FA010R	114	FK043J	107
AB016R	95	AC050R	98	AP020R	88	FA073R	114	FK043K	107
AB020R	95	AC051R	98	AP021R	88	FA087R	113	FK043R	107
AB021R	95	AC052R	98	AP022R	88	FA088R	113	FK043T	107
AB032R	95	AC053R	98	AR001R	90	FA089T	114	FL016R	114
AB033R	96	AC054R	97	AR002R	90	FB001J	105	FL017R	114
AC001R	96	AG001R	89	AR004R	90	FB001M	105	FL021R	112
AC002R	96	AG002R	89	AS001R	92	FB001R	105	FL026R	107
AC003R	96	AG003R	89	AS002R	92	FB001T	105	FL032R	107
AC005R	96	AG020R	89	AS025R	92	FB002J	105	FL043R	108
AC013R	96	AG025R	89	AS030R	93	FB002M	105	FL067R	113
AC021R	96	AG032R	90	AS032R	93	FB002Q	105	FL068R	113
AC028R	98	AG033R	90	AW001R	89	FB002R	105	FL088R	114
AC029R	97	AG034R	90	AW002R	89	FB002T	105	FL115R	108
AC031R	97	AG051R	89	AW003R	89	FB006J	105	FL375R	109
AC032R	97	AH001R	91	DA071R	116	FB006M	105	FL385R	107
AC033R	97	AH002R	91	DA072R	116	FB006Q	105	FL386R	109

CODE	PAGE	CODE	PAGE	CODE	PAGE	CODE	PAGE	CODE	PAGE
FL387R	108	FL946R	110	GAF116-D48	67	GAF132-D48	70	GAF148-C42	73
FL421R	112	FL946T	110	GAF116-E60	67	GAF132-E60	70	GAF148-D48	73
FL430R	109	FL947R	110	GAF117X-D48	68	GAF133-A27	70	GAF148-E60	73
FL492R	109	FL947T	110	GAF117Y-D48	68	GAF133-B34	70	GAF149-A27	73
FL526R	112	FL948R	110	GAF119-A27	68	GAF133-C42	70	GAF149-B34	73
FL573R	114	FL948T	110	GAF119-B34	68	GAF133-D48	70	GAF149-C42	73
FL611R	109	FL949R	110	GAF119-C42	68	GAF133-E60	70	GAF149-D48	73
FL612R	108	FL949T	110	GAF119-C42/D48	68	GAF134-B34	70	GAF149-E60	73
FL615R	113	FL950R	110	GAF119-D48	68	GAF134-C42	70	GAF150-B34	73
FL805R	110	FL950T	110	GAF119-E60	68	GAF134-D48	70	GAF150-C42	73
FL805T	110	FL951R	110	GAF123-B34	68	GAF135-A27	71	GAF150-D48	73
FL864R	110	FL951T	110	GAF123-C42	68	GAF135-B34	71	GAF152-B34	73
FL864T	110	FM011T	116	GAF123-D48	68	GAF135-C42	71	GAF152-C42	73
FL873R	111	FS016C	105	GAF124-B34	68	GAF135-D48	71	GAF152-D48	73
FL873T	111	FS019C	106	GAF124-C42	68	GAF135-E60	71	GAF153-B34	74
FL877R	108	GAA300-AB	86	GAF124-D48	68	GAF135Y-D48	71	GAF153-C42	74
FL883R	111	GAA300-CDE	86	GAF125-A27	69	GAF136-C42	71	GAF153-D48	74
FL883T	111	GAA301-AB	87	GAF125-B34	69	GAF136-D48	71	GAF154-B34	74
FL892R	111	GAA301-CDE	87	GAF125-C42	69	GAF137-D48	71	GAF154-C42	74
FL892T	111	GAA302	87	GAF125-D48	69	GAF138-A27	71	GAF154-D48	74
FL893R	111	GAA303-AB	86	GAF125-D48/C42	69	GAF138-B34	71	GAF155-B34	74
FL893T	111	GAA303-CDE	86	GAF125-E60	69	GAF138-C42	71	GAF155-C42	74
FL894R	111	GAA304-AB	87	GAF127-B34	69	GAF138-D48	71	GAF155-D48	74
FL894T	111	GAA304-CDE	87	GAF127-C42	69	GAF140-A27	72	GAF156-B34	74
FL895R	111	GAA305-CDE	86	GAF127-D48	69	GAF140-B34	72	GAF156-C42	74
FL895T	111	GAA390	87	GAF128-A27	69	GAF140-C42	72	GAF156-D48	74
FL896R	111	GAF101-A27	67	GAF128-B34	69	GAF140-D48	72	GAF158-A27	74
FL896T	111	GAF101-B34	67	GAF128-C42	69	GAF143-A27	72	GAF158-B34	74
FL912R	111	GAF101-B34/C42	67	GAF128-D48	69	GAF143-B34	72	GAF158-C42	74
FL912T	111	GAF101-C42	67	GAF128-E60	69	GAF143-C42	72	GAF158-D48	74
FL913R	111	GAF101-C42/B34	67	GAF129-A27	69	GAF143-D48	72	GAF158-E60	74
FL913T	111	GAF101-C42/D48	67	GAF129-B34	69	GAF144-B34	72	GAF160-A27	75
FL914R	111	GAF101-D48	67	GAF129-C42	69	GAF144-C42	72	GAF160-B34	75
FL914T	111	GAF101-D48/B34	67	GAF129-D48	69	GAF144-D48	72	GAF160-C42	75
FL915R	111	GAF101-D48/C42	67	GAF130-B34	70	GAF145-B34	72	GAF160-D48	75
FL915T	111	GAF101-E60	67	GAF130-C42	70	GAF145-C42	72	GAF160-E60	75
FL916R	111	GAF101-E60/D48	67	GAF130-D48	70	GAF145-D48	72	GAF161-A27	75
FL916T	111	GAF104-A27	67	GAF131-A27	70	GAF146-B34	72	GAF161-B34	75
FL917R	111	GAF104-B34	67	GAF131-B34	70	GAF146-C42	72	GAF161-B34/A27	75
FL917T	111	GAF104-C42	67	GAF131-C42	70	GAF146-D48	72	GAF161-C42	75
FL918R	111	GAF104-D48	67	GAF131-D48	70	GAF147-B34	73	GAF161-C42/B34	75
FL918T	111	GAF104-E60	67	GAF131-E60	70	GAF147-C42	73	GAF161-D48	75
FL937R	112	GAF116-A27	67	GAF132-A27	70	GAF147-D48	73	GAF161-D48/B34	75
FL945R	110	GAF116-B34	67	GAF132-B34	70	GAF148-A27	73	GAF161-D48/C42	75
FL945T	110	GAF116-C42	67	GAF132-C42	70	GAF148-B34	73	GAF161-E60	75



CODE	PAGE	CODE	PAGE	CODE	PAGE	CODE	PAGE	CODE	PAGE
GAF161-E60/D48	75	GAF172M-C42	77	GAF199-D48	80	GAT-C42-3	67	HC056R	104
GAF165-B34	75	GAF172M-D48	77	GAF232-D48	81	GAT-D48-1	67	HC060R	103
GAF165-C42	75	GAF173-A27	77	GAF242-C42	81	GAT-D48-3	67	HC066R	103
GAF165-D48	75	GAF173-B34	77	GAF242-D48	81	GAT-E60-1	67	HC070R	104
GAF165-E60	75	GAF173-C42	77	GAF245-D48	81	GAT-E60-3	67	HC071R	104
GAF166-B34	75	GAF173-D48	77	GAF246-B34	81	GL001	117	HC072R	104
GAF166-C42	75	GAF173-E60	77	GAF246-C42	81	GL002	117	ID115T-S	7
GAF166-D48	75	GAF173F-A27	78	GAF246-D48	81	GL003	117	IF034X	99
GAF166-E60	75	GAF173F-B34	78	GAF251-B34	81	GL004	117	IF112X	46
GAF167-A27	76	GAF173F-C42	78	GAF251-C42	81	GL011	117	IF113X	46
GAF167-B34	76	GAF173F-D48	78	GAF251-D48	81	GL012	117	IF114X	47
GAF167-C42	76	GAF173F-E60	78	GAF252-D48	82	GL013	117	IF115X	47
GAF167-D48	76	GAF173M-A27	78	GAF253-D48	82	GL021	117	IF116X	99
GAF167-E60	76	GAF173M-B34	78	GAF255-D48	82	GL022	117	IF117X	99
GAF167M-A27	76	GAF173M-C42	78	GAF256-D48	82	GL023	117	IF118X	63
GAF167M-B34	76	GAF173M-D48	78	GAF310	82	GL024	117	IF119X	46
GAF167M-C42	76	GAF173M-E60	78	GAF333-A27	83	GL031	117	IF120X	46
GAF167M-D48	76	GAF174-D48	78	GAF333-B34	83	GL101	117	IF121X-43	7
GAF167M-E60	76	GAF174M-D48	78	GAF333-C42	83	GL111	118	IF121X-50	7
GAF168-A27	76	GAF175-D48	78	GAF333-D48	83	GL121	118	IF122X	47
GAF168-B34	76	GAF175M-D48	79	GAF333-E60	83	HC002R	102	IF123X	63
GAF168-C42	76	GAF176-A27	79	GAF721-C42	83	HC006R	102	IF124X	46
GAF168-D48	76	GAF176-B34	79	GAF724-C42	83	HC008R	102	IF125X	47
GAF168-E60	76	GAF176-C42	79	GAF725-C42	83	HC010R	103	IF127X	43
GAF168M-A27	76	GAF176-D48	79	GAF728-C42	83	HC011R	102	IF128X	63
GAF168M-B34	76	GAF176-E60	79	GAF729-C42	84	HC012R	104	IF129X	63
GAF168M-C42	76	GAF179-A27	79	GAF731-C42	84	HC013R	102	IF130X	10
GAF168M-D48	76	GAF179-B34	79	GAF745-C42	84	HC015R	104	IF131XS4	10
GAF168M-E60	76	GAF179-C42	79	GAF745-D48	84	HC016R	103	IF133X	47
GAF169-A27	76	GAF179-D48	79	GAF746-C42	84	HC017R	103	IF134X	46
GAF169-B34	76	GAF182-A27	79	GAF747-C42	84	HC019R	104	IF135X	46
GAF169-C42	76	GAF182-B34	79	GAF747-D48	84	HC022R	103	IF137X	45
GAF169-D48	76	GAF182-C42	79	GAF748-C42	85	HC028R	102	IF138X	43
GAF169-E60	76	GAF182-D48	79	GAF750-C42	85	HC030R	102	IF147X-43	7
GAF169M	77	GAF185-D48	79	GAF750-C42/D48	85	HC031R	101	IF147X-50	7
GAF170-A27	77	GAF191-D48	80	GAF750-D48	85	HC032R	100	IF148X	115
GAF170-B34	77	GAF192-B34	80	GAF751-C42	85	HC033R	102	IF149X	115
GAF170-C42	77	GAF192-C42	80	GAF751-C42/D48	86	HC034R	101	IF149XHD	115
GAF170-D48	77	GAF192-D48	80	GAF764-C42	86	HC036R	101	IF150X	115
GAF170-E60	77	GAF197-D48	80	GAF797-C42	86	HC040R	103	IF150XHD	115
GAF171-A27	77	GAF198-B34	80	GAT-A27-1	67	HC050R	102	IF151X	115
GAF171-B34	77	GAF198-C42	80	GAT-A27-3	67	HC051R	102	IF152X	115
GAF171-C42	77	GAF198-D48	80	GAT-B34-1	67	HC053R	101	IF153XCP	116
GAF171-D48	77	GAF199-B34	80	GAT-B34-3	67	HC054R	101	IF153XGP	116
GAF171-E60	77	GAF199-C42	80	GAT-C42-1	67	HC055R	104	IF154X	17





# INDEX

121

CODE	PAGE	CODE	PAGE	CODE	PAGE	CODE	PAGE	CODE	PAGE
IF155X	16	IF456XS4H	20	JD013J	32	JD122M	33	JH014A	11
IF156X	16	IF456XSSM	20	JD013M	32	JD122N	33	JH014M	11
IF157X	16	IF456XSSS	20	JD013N	32	JD122Q	33	JH014R	11
IF158X	16	IF457XS4	20	JD013Q	32	JD122R	33	JH014T	11
IF160X	17	IF457XS4H	20	JD013R	32	JD122T	33	JH019A	11
IF162X	17	IF457XSSM	20	JD013T	32	JD130A	33	JH019M	11
IF163X	17	IF457XSSS	20	JD019A	32	JD130H	33	JH019R	11
IF164X	17	IF458XSSS	19	JD019H	32	JD130J	33	JH019T	11
IF400XSSM	19	IF459XSSM	20	JD019J	32	JD130M	33	JH021A	12
IF400XSSS	19	IF459XSSS	20	JD019M	32	JD130N	33	JH021M	12
IF401XSSM	19	IF460XSSS	21	JD019N	32	JD130Q	33	JH021R	12
IF401XSSS	19	IF461XSSS	21	JD019Q	32	JD130R	33	JH021T	12
IF404XSSM	22	IF500XSC	19	JD019R	32	JD130T	33	JH023A	12
IF404XSSS	22	IF500XSS	19	JD019T	32	JD140A	33	JH023M	12
IF407XSSM	21	IF502XSC	19	JD025A	32	JD140H	33	JH023R	12
IF408XSSM	21	JA001R	100	JD025H	32	JD140J	33	JH023T	12
IF409XSSM	22	JA002R	100	JD025J	32	JD140M	33	JH025A	12
IF410XSSM	22	JA003R	100	JD025M	32	JD140N	33	JH025M	12
IF445XCP	21	JA005R	100	JD025N	32	JD140Q	33	JH025R	12
IF445XSC	21	JB000R	23	JD025Q	32	JD140R	33	JH025T	12
IF446XBF	18	JB000T	23	JD025R	32	JD140T	33	JH031A	12
IF446XCP	18	JB002R	23	JD025T	32	JH005A	11	JH031M	12
IF446XGP	18	JB002T	23	JD032A	32	JH005M	11	JH031R	12
IF446XMB	18	JB008R	23	JD032H	32	JH005R	11	JH031T	12
IF446XSC	18	JB008T	23	JD032J	32	JH005T	11	JH032A	12
IF448XBF	18	JB024R	23	JD032M	32	JH007A	15	JH032M	12
IF448XCP	18	JB024T	23	JD032N	32	JH007M	15	JH032R	12
IF448XGP	18	JB081R	23	JD032Q	32	JH007R	15	JH032T	12
IF448XMB	18	JB081T	23	JD032R	32	JH007T	15	JH033A	13
IF448XSC	18	JB135R	23	JD032T	32	JH008A	15	JH033M	13
IF449XBF	18	JB135T	23	JD038A	32	JH008M	15	JH033R	13
IF449XCP	18	JB300SB	24	JD038H	32	JH008R	15	JH033T	13
IF449XGP	18	JB301SB	24	JD038J	32	JH008T	15	JH034A	13
IF449XMB	18	JB302SB	24	JD038M	32	JH009A	16	JH034M	13
IF449XSC	18	JB303SB	24	JD038N	32	JH009M	16	JH034R	13
IF450XMB	18	JB305SB	24	JD038Q	32	JH009R	16	JH034T	13
IF450XSC	18	JB306SB	24	JD038R	32	JH009T	16	JH035A	13
IF450XSG	18	JB307SB	24	JD038T	32	JH011A	11	JH035M	13
IF451XMB	18	JB400SB	24	JD060A	33	JH011M	11	JH035R	13
IF451XSC	18	JB401SB	24	JD060M	33	JH011R	11	JH035T	13
IF451XSG	18	JB402SB	24	JD060R	33	JH011T	11	JH040R	15
IF452XSSM	22	JB403SB	24	JD060T	33	JH013A	11	JH040T	15
IF452XSSS	22	JB407SB	24	JD122A	33	JH013M	11	JH044R	15
IF456XMB	20	JD013A	32	JD122H	33	JH013R	11	JH044T	15
IF456XS4	20	JD013H	32	JD122J	33	JH013T	11	JH050R	13

INDEX



CODE	PAGE	CODE	PAGE	CODE	PAGE	CODE	PAGE	CODE	PAGE
JH050T	13	JH104R	5	JN028R	25	JN210T	29	JX003T	27
JH070A	8	JH104T	5	JN028T	25	JN213R	28	SSF001-M6	49
JH070H	8	JH105A	5	JN029R	25	JN214R	28	SSF001-S6	49
JH070J	8	JH105M	5	JN029T	25	JN220R	28	SSF002-M6	49
JH070M	8	JH105R	5	JN063R	26	JN221R	28	SSF002-S6	49
JH070N	8	JH105T	5	JN063T	26	JN222R	28	SSF003-M6	50
JH070Q	8	JH130R	6	JN064R	26	JN228R	28	SSF003-S6	50
JH070R	8	JH130T	6	JN064T	26	JN230R	27	SSF004-M6	50
JH070T	8	JH131T	6	JN065R	26	JN230T	27	SSF004-S6	50
JH072XMB	10	JH132T	6	JN065T	26	JN234R	28	SSF007-M6	50
JH072XSSS	10	JH133T	6	JN068R	26	JN240R	28	SSF007-S6	50
JH073XMB	10	JH134T	6	JN068T	26	JN241R	28	SSF009-M6	52
JH073XSSS	10	JH135A	5	JN077R	26	JN242R	28	SSF009-S6	52
JH074XMB	9	JH135M	5	JN077T	26	JR002R	22	SSF010-6	53
JH074XSSS	9	JH135R	5	JN086R	25	JR002T	22	SSF011-M6	54
JH075XMB	9	JH135T	5	JN086T	25	JS001R	105	SSF011-S6	54
JH075XSSS	9	JH136T	7	JN136A	29	JT001A	31	SSF012-M6	54
JH077XMB	9	JH137T	7	JN136H	29	JT001R	31	SSF012-S6	54
JH077XSSS	9	JH138T	7	JN136J	29	JT001T	31	SSF013-M6	53
JH078XMB	9	JH159R	15	JN136M	29	JT002A	31	SSF014-M6	54
JH078XSSS	9	JH159T	15	JN136N	29	JT002R	31	SSF014-S6	54
JH080XMB	9	JH160Q	92	JN136Q	29	JT002T	31	SSF020-M6	51
JH080XSSS	9	JH165R	91	JN136R	29	JT004A	31	SSF020-S6	51
JH084A	8	JH166R	91	JN136T	29	JT004R	31	SSF021-M6	51
JH084H	8	JH170R	13	JN138A	29	JT004T	31	SSF021-S6	51
JH084N	8	JH170T	13	JN138H	29	JT005A	31	SSF022-M6	51
JH084T	8	JH181R	14	JN138J	29	JT005R	31	SSF022-S6	51
JH085A	8	JH181T	14	JN138M	29	JT005T	31	SSF023-M6	51
JH085H	8	JH224R	14	JN138N	29	JT007A	31	SSF023-S6	51
JH085N	8	JH224T	14	JN138Q	29	JT007Q	92	SSF024-M6	52
JH085T	8	JH225R	14	JN138R	29	JT007T	31	SSF025-M6	50
JH086A	8	JH225T	14	JN138T	29	JT008A	31	SSF026-M6	52
JH086H	8	JH230R	14	JN148R	28	JT008T	31	SSF026-S6	52
JH086N	8	JH230T	14	JN160A	30	JT010A	31	SSF028-6	53
JH086T	8	JH235R	14	JN160H	30	JT010R	31	SSF029-M6	49
JH099A	5	JH235T	14	JN160J	30	JT010T	31	SSF029-S6	49
JH099M	5	JM002R	29	JN160M	30	JT011A	31	SSF030-M6	52
JH099R	5	JN000R	27	JN160N	30	JT011R	31	SSF030-S6	52
JH099T	5	JN000T	27	JN160Q	30	JT011T	31	SSF031-M6	52
JH103A	5	JN002R	25	JN160R	30	JT017	30	SSF031-S6	52
JH103M	5	JN002T	25	JN160T	30	JX001R	27	SSF032-M6	53
JH103R	5	JN004R	25	JN161R	30	JX001T	27	SSF034-M6	54
JH103T	5	JN004T	25	JN161T	30	JX002R	27	SSF034-S6	54
JH104A	5	JN025R	30	JN203R	30	JX002T	27	SSF035-M6	50
JH104M	5	JN025T	30	JN210R	29	JX003R	27	SSF035-S6	50



# INDEX

123

CODE	PAGE	CODE	PAGE	CODE	PAGE	CODE	PAGE	CODE	PAGE
SSF036-M6	53	SSF092-M6	55	SSG005-S6	61	SST001-S4-M	48	SSW064-6	43
SSF036-S6	53	SSF094-M6	55	SSG006-M6	61	SST001-S6-M	48	SSW065-6	44
SSF037-M6	51	SSF102-M6	55	SSG006-S6	61	SST004-M6-M	48	SSW066-6	44
SSF060-M6	49	SSF102-S6	55	SSG020-M6	61	SST004-S6-M	48	SSW067-6	44
SSF060-S6	49	SSF105-6	55	SSG021-M6	61	SST005-M6-M	48	SSW068-6	44
SSF061-M6	49	SSF106-M6	55	SSG022-M6	61	SST006-M6-M	48	SSW069-6	39
SSF061-S6	49	SSF106-S6	55	SSG023-M6	62	SST009	49	SSW070-6	39
SSF062-M6	49	SSF108-M6	56	SSG100-S6	62	SST010	49	SSW071-6	41
SSF062-S6	49	SSF109-M6	56	SSG101-S6	62	SST100-M6-M	48	SSW072-6	41
SSF063-M6	50	SSF109-S6	56	SSG103-S6	62	SST100-S6-M	48	SSW073-6	43
SSF063-S6	50	SSF110-M6	56	SSG105-S6	62	SST200-M6-M	48	SSW074-6	42
SSF064-M6	50	SSF110-S6	56	SSG107-S6	62	SST200-S6-M	48	SSW075-6	42
SSF064-S6	50	SSF111-M6	56	SSG154-6	62	SST203-M6-M	49	SSW076-6	42
SSF065-M6	54	SSF111-S6	56	SSG157-6	63	SSW001E-050	38	SSW078-6	42
SSF065-S6	54	SSF112-M6	56	SSG158-6	63	SSW001E-100	38	SSW085-6	43
SSF066-M6	50	SSF112-S6	56	SSP001-M6	64	SSW001E-305	38	SSW086-6	43
SSF066-S6	50	SSF113-M6	57	SSP001-S6	64	SSW001-M	38	SSW087-6	43
SSF067-6	53	SSF117-M6	57	SSP003-M6	64	SSW010-305	38	SSW088-6	43
SSF068-M6	53	SSF117-S6	57	SSP003-S6	64	SSW010-M	38	SSW089-6	45
SSF069-M6	54	SSF200-M6	57	SSP011-M6	64	SSW020E-050	38	SSW090-6	45
SSF069-S6	54	SSF201-M6	57	SSP011-S6	64	SSW020E-100	38	SSW091-6	45
SSF070-M6	52	SSF202-M6	57	SSP014-M6	64	SSW020E-305	38	SSW092-BK	45
SSF070-S6	52	SSF202-S6	57	SSP014-S6	64	SSW020-M	38	SSW093-6	42
SSF071-M6	52	SSF203-M6	58	SSP015-M6	64	SSW043-6	41	SSW100-6	38
SSF071-S6	52	SSF203-S6	58	SSP015-S6	64	SSW044-6	41	SSW101-6	38
SSF072-M6	52	SSF204-M6	58	SSP016-M6	65	SSW045-6	41		
SSF072-S6	52	SSF204-S6	58	SSP016-S6	65	SSW046-6	41		
SSF073-M6	52	SSF205-M6	58	SSP017-M6	65	SSW047-6	41		
SSF074-M6	54	SSF207-M6	58	SSP017-S6	65	SSW048-6	41		
SSF076-M6	51	SSF208-M6	58	SSP018-M6	65	SSW049-6	39		
SSF076-S6	51	SSF260-M6	59	SSP018-S6	65	SSW050-6	38		
SSF077-M6	51	SSF261-M6	59	SSP019-M6	65	SSW051-6	39		
SSF077-S6	51	SSF262-M6	59	SSP019-S6	65	SSW052-6	39		
SSF078-M6	51	SSF263-M6	59	SSP021-M6	66	SSW053-6	38		
SSF078-S6	51	SSF264-M6	59	SSP021-S6	66	SSW054-6	40		
SSF079-M6	51	SSF265-M6	60	SSP031-M6	66	SSW055-6	40		
SSF079-S6	51	SSG001-M6	60	SSP031-S6	66	SSW056-6	39		
SSF081-M6	52	SSG001-S6	60	SSP036-M6	66	SSW057-6	40		
SSF081-S6	52	SSG002-M6	60	SSP036-S6	66	SSW058-6	40		
SSF082-M6	50	SSG002-S6	60	SSP037-M6	66	SSW059-6	39		
SSF082-S6	50	SSG003-M6	60	SSP037-S6	66	SSW060-6	40		
SSF083-M6	53	SSG003-S6	60	SSP091-M6	64	SSW061-6	40		
SSF083-S6	53	SSG004-M6	60	SSP091-S6	64	SSW062-BK	43		
SSF084-M6	54	SSG004-S6	60	SSP091XMB	64	SSW062-GR	43		
SSF084-S6	54	SSG005-M6	61	SST001-M6-M	48	SSW063-6	44		

INDEX



## ABOUT HAMMERSMITH

Hammersmith Woodturners Pty. Ltd. opened for business back in 1946 when E.J. (Ted) Groth, a toolmaker by trade, started a small hand wood turning business in his back yard, manufacturing wooden souvenirs and turnings for the furniture trade.

In the early years the growth of the business was helped greatly by the 1956 Melbourne Olympics, and the use of wooden legs on the bottom of television sets.

The company purchased their first automated wood turning lathe in 1962, and have now expanded their collection to well over 20.

Drawing on his experience as a toolmaker, and having a fully equipped tool room, Ted was not only able to maintain and repair all specialised wood turning equipment, but also build machines to do special processes in cutting down on costly hand finishing.

In 1966 his son, Geoff, joined the business. After spending over 20 years in production and sales, Geoff went on to manage the company until his retirement in 2012. It was Geoff's early efforts "on the road" that helped the company expand into the many different areas that it is involved in today, including the building, staircase, and furniture industries throughout all parts of Australia.

Then in 1995, Geoff's son, Wyatt, became the third generation to work in this successful family business. Like his father, Wyatt has concentrated his efforts in customer relations, including the setting up of office and factory systems to ensure the customer's demands can be met both quickly and accurately. In 2012 Wyatt took over the role of managing of the business after his father retired.

In 2010, Wyatt's wife, Michelle, joined the company. Initially taking on the role as receptionist as well as marketing, but more recently has moved into managing accounts and payroll.

In recent years the decline in popularity of wood turnings has resulted in even more changes to the types of products manufactured; and now with 75 years of business behind them, they are a 100% freehold company that employs around 15 people; and whilst their past doesn't guarantee a future it certainly goes a long way to doing so.

## HAVE YOU SEEN OUR WEBSITE?

- It contains all of the products in this catalogue, as well as a few extra which are available for purchase online
- Larger photographs and detailed dimensioned CAD drawings can be viewed for all products
- The most current pricing for all products
- Current news stories about custom jobs that we have done or new products that we have just released

## HAMMERSMITH.COM.AU

### HAMMERSMITH WOODTURNERS PTY LTD

49 HOCKING STREET, BROMPTON, SOUTH AUSTRALIA 5007

P: (08) 8346 8211 | E: info@hammersmith.com.au | W: hammersmith.com.au

A.C.N 007 670 528 | A.B.N 14 007 670 528

CURRENT AS OF APRIL 2021 (REPLACES 2016-2018 CATALOGUE)