



Wire Balustrade Kit R

Key Benefits

- ✓ Matches kit J
- ✓ Self-adjusts to any angle
- ✓ Slimline

Maximum Run Span

6 Metres

Maximum Post Wall Thickness

4mm

About This Kit

Metal Posts



✓ Suitable

Timber Posts



✗ Not Suitable

Horizontal Balustrade



✓ Suitable

Angled Balustrade



✓ Suitable

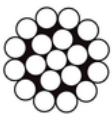
Post Material

This kit is only suitable for metal posts.

Post Type

This kit is suitable for both horizontal & angled balustrade.

1x19 Wire



✓ Suitable

7 x 7 Wire



✓ Suitable

Wire Type

This kit can be used with any wire.

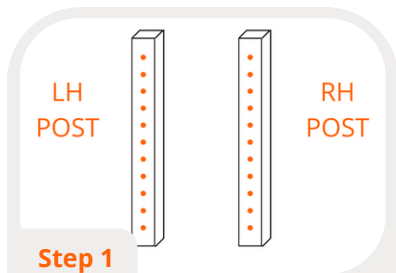
Wire Balustrade Kit R



Tools Required



Instructions

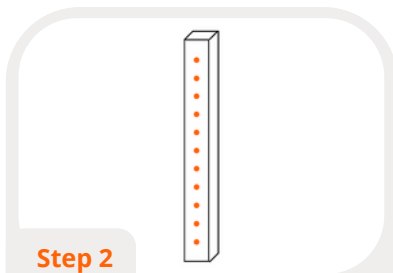


Step 1

Mark RH & LH Posts

Draw out a map of your end posts & decide which will take left-hand rivets, and which will take right-hand rivets.

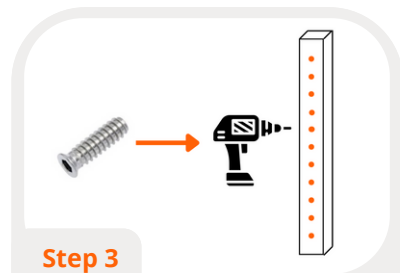
There should be one right-hand post, and one left-hand post per run.



Step 2

Pre-Drill Holes

Mark out and pre-drill holes on all end and intermediate posts. 80mm spacing is recommended. Recommended hole size:
- 10mm for end posts
- 4mm for intermediate posts



Step 3

Install Inserts

Insert all left and right-hand rivets into their respective posts using the rivet nut inserter (video available on our [youtube channel](#)).

Then, insert the swivel connectors into the rivet nuts.

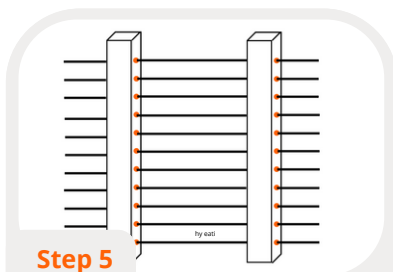


Step 4

Crimp RH threads

Crimp the wire into the right-hand fitting, then screw it into the matching swivel connector.

Do not screw it in fully, just enough to hold the wire in place!

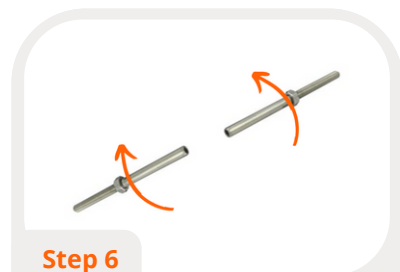


Step 5

Pass Wire Through & Repeat

Pass the wire through the intermediate posts and then repeat step 4 with your left hand threads.

Do not screw them in fully, just enough to hold the wire in place!



Step 6

Tension Wire

Tension the wires by rotating the left and right hand lag screws/swivels (in the same direction) at the same time.

Lock the system in place by tightening the hex nuts against the head of the threaded inserts

***You will need two people for this part of the job!*